



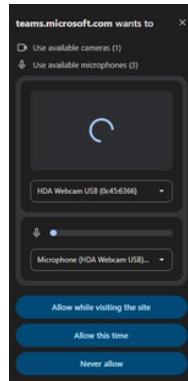
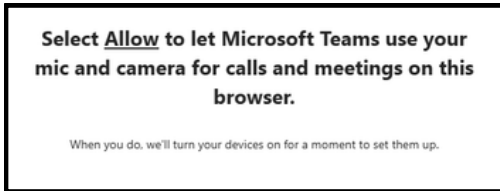
Microsoft Teams



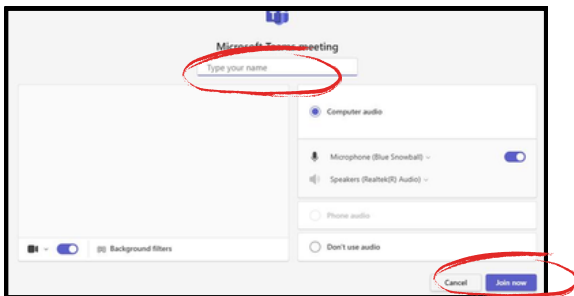
To access live class instruction, go to Canvas and select the class you wish to join.

1. Find the direct **Teams Meeting link or button** that the teacher has posted on the class Canvas page or use the **Microsoft Education link** in the left navigation.

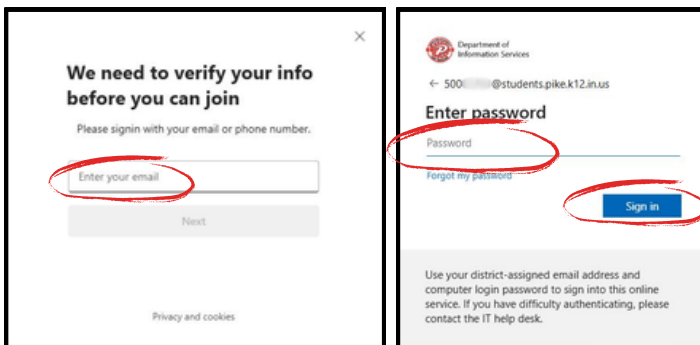
2. Allow the **Camera and Microphone** access.



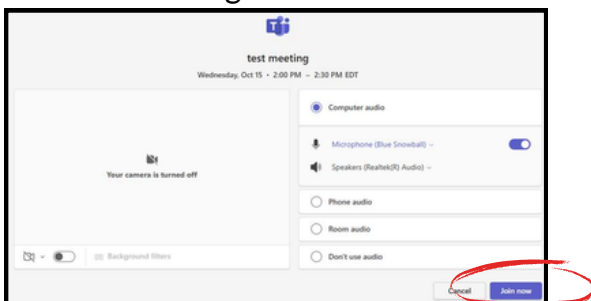
3. Type your name and click **Join Now**.



4. Verify your info by entering your **Pike email (500#####@students.pike.k12.in.us)** and password.



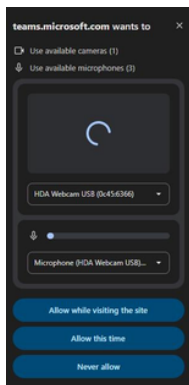
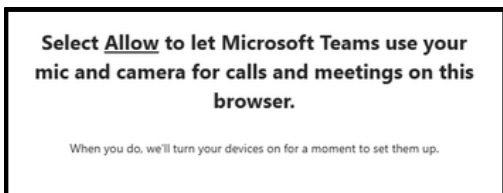
5. Click **Join Now** again.



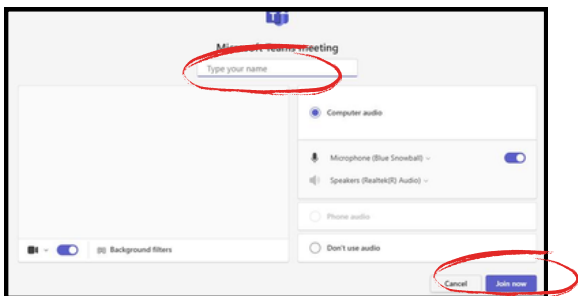
6. Wait for the teacher to let you into the meeting.

Para acceder a la instrucción de clases en vivo, vaya a Canvas y seleccione la clase a la que desea unirse.

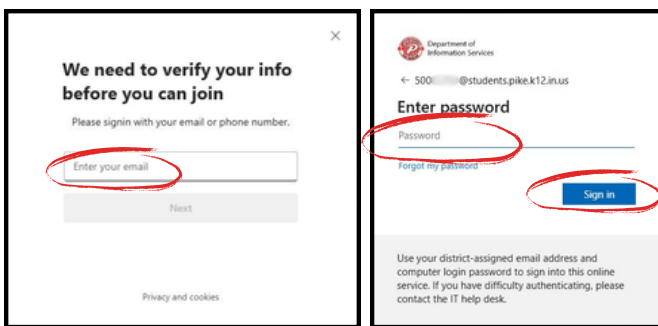
1. Busque el enlace o botón de reunión directa de Teams que el docente publicó en la página Canvas de la clase o use el enlace de **Microsoft Education** en la navegación izquierda.
2. Permitir el acceso a la cámara y al micrófono.



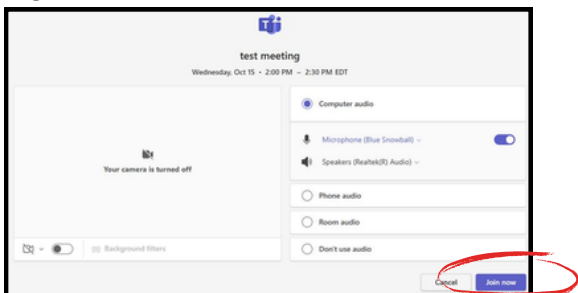
3. Escribe tu nombre y haz clic en Unirse ahora.



4. Verifique su información ingresando su correo electrónico de Pike (500#####@students.pike.k12.in.us) y contraseña.



5. Haga clic en Unirse ahora nuevamente.



6. Espere a que el profesor le permita entrar a la reunión.



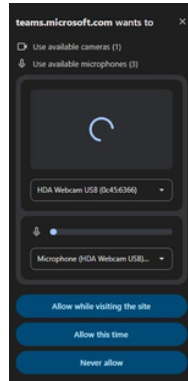
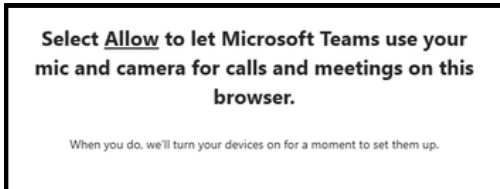
Microsoft Teams



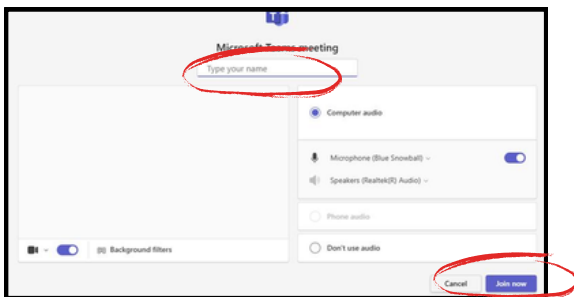
Pou jwenn aksè nan enstriksyon an dirèk, ale sou Canvas epi chwazi klas ou vle rantre a.

1. Jwenn lyen dirèk Reyinyon Ekip la oswa bouton pwofesè a te poste sou paj Canvas klas la oswa itilize lyen Microsoft Education ki nan navigasyon agoch la.

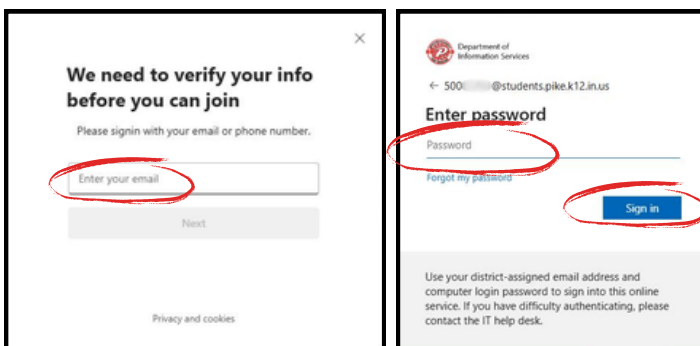
2. Pèmèt Kamera a ak Mikwofòn nan aksè.



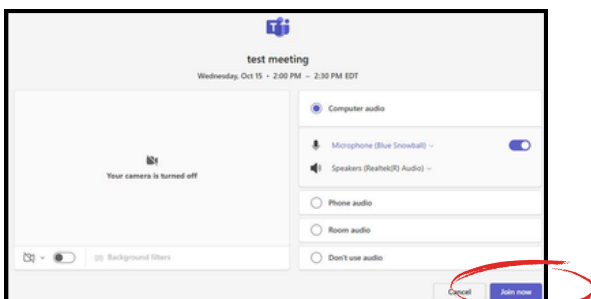
3. Tape non w epi klike sou Enskri Kounye a.



4. Verifye enfòmasyon ou yo lè w antre imèl Pike ou a (500#####@students.pike.k12.in.us) ak modpas ou.



5. Klike sou Enskri Kounye a ankò.



6. Tann pwofesè a pou l kite w antre nan reyinyon an.