

School Feature **MARK**

Elementary School **TWAIN**

Presented by

Michael Bosler, Ed.D, Principal

Brittney Campbell, Assistant Principal

Judith Chavez-Villegas, School Social Worker

Elizabeth Master, Language Arts Specialist

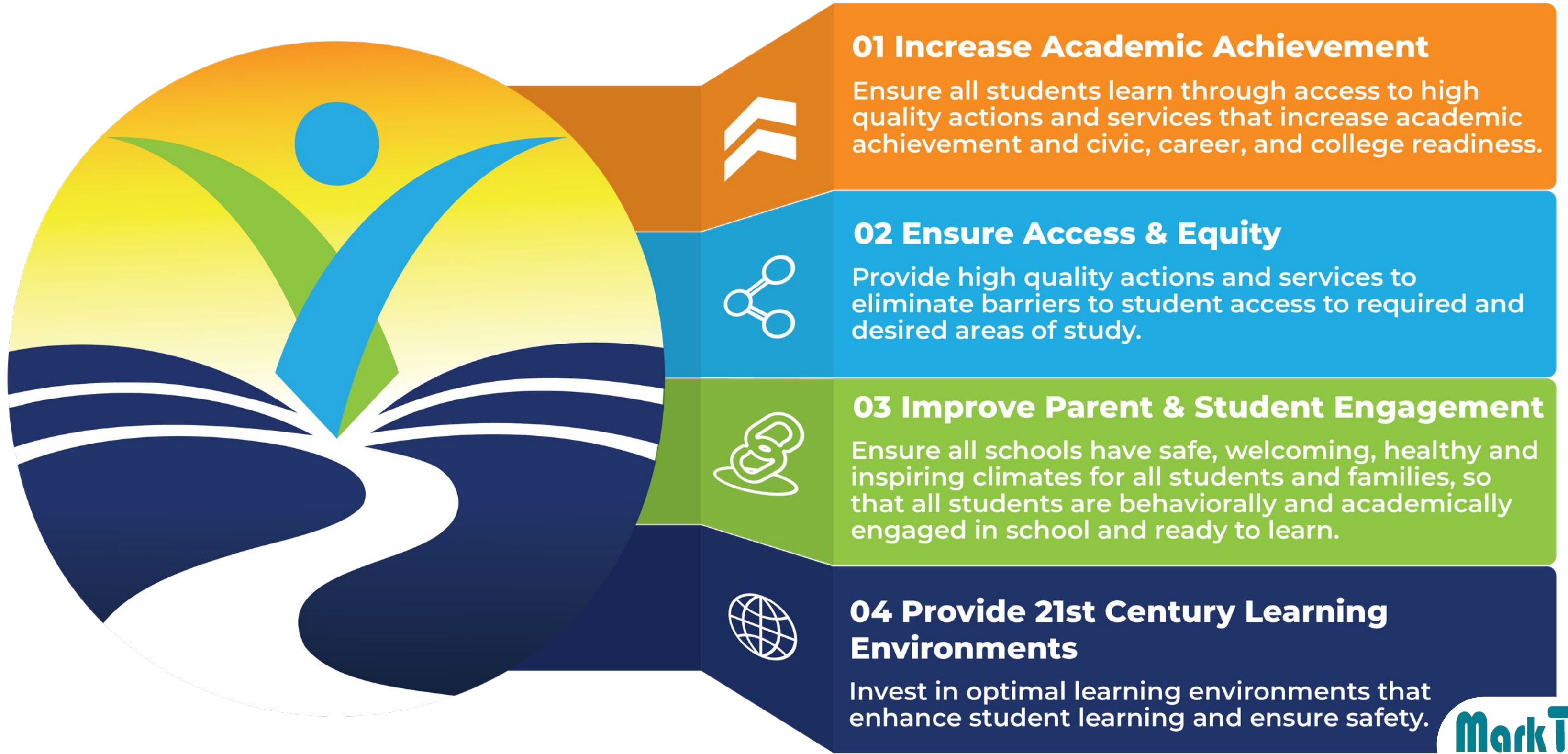
Wendy Sanchez, 2nd Grade DI Teacher

Marlem Alzivo, Community Liaison

Mia C., Kayden P., Manuel N., Jimena L. H.



District Goals

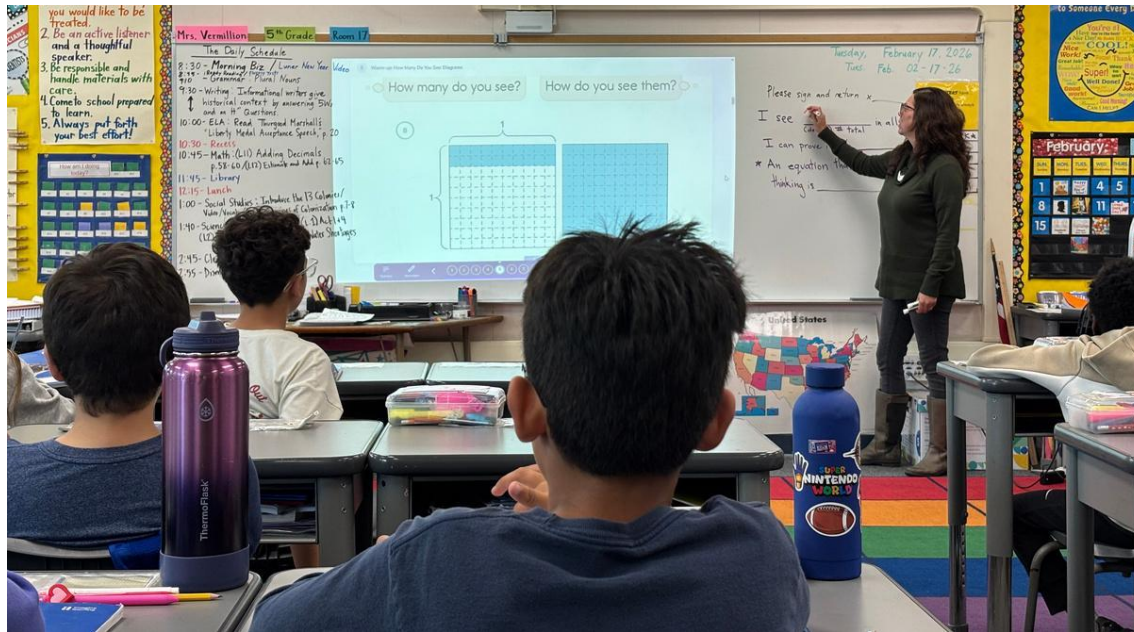


District Goal 01: Increase Academic Achievement

School Highlights

Essential Standards (PLC)

- All grade levels have identified essential standards
- The next step is guaranteeing student mastery



Partner Teaching (Data-Driven Instruction)

- Language Arts Specialist and Math TOSAs
- Professional Development via book study and cross-site collaboration.



Supporting all River Rafterers (MTSS)

- Emergent Bilinguals
 - Targeted support inside and outside of all classrooms (ELPAC club & Newcomer Academy)
- Literacy Center
 - Support in English and Spanish
 - Data Chats
- GATE Clubs
 - 28 River Rafterers + 5 High Achievers
 - Shared Science & Math Enrichment
 - Chess Club, Coding, & STEAM



Mark Twain
Elementary School

District Goal 02: Ensure Equity & Access

School Highlights

California Healthy Kids Survey 2025

Students feel...

Families feel...

84%

91%

100%

Connected

Safe

Connected

Learning Center

- 2 full-time teachers supporting our students with IEPs.
- Bilingual specialists

Cultural Recognition and Celebrations

- Ongoing celebrations culminating in our EOY celebration in Spring.

PBIS - Platinum

- Big Buddies



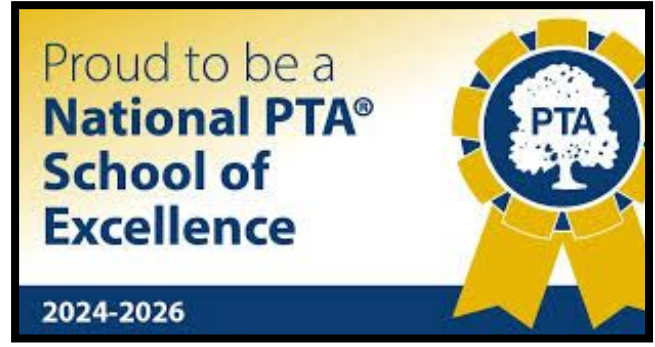
RISE & Affinity Space

- 14 River Rafters
- CAAM Field Trip
- 4 Family Affinity Spaces



District Goal 03: Improve Parent & Student Engagement

School Highlights



Attendance challenges: Miss School, Miss Out!

- Class challenges
- Short Term Independent Study
- Spirit Weeks
- Targeted Interventions

Community Involvement

- PTA School of Excellence 2026
- Community of Multilingual Families
 - CABE Parent Workshop
- Parent Ambassador Leaders (PALs)
 - Red Ribbon & Autism Awareness



Student Leadership Opportunities

- Elected Officers at Twain
- Superintendent's Council



District Goal 04: Provide 21st Century Learning Environments

School Highlights

MakerSpace/TREC/PS Arts

- Students are communicating, collaborating, creating, and thinking critically



Field Trips

- Discovery Science Center
- Museum of Tolerance
- Torrance Cultural Arts Center
- Griffith Observatory
- West Basin Water District
- Centennial Farm
- Reagan Library
- Cabrillo Beach
- La Brea Tar Pits

GATE

- Science Saturdays
- Heroes Workshop - Dungeons & Dragons
- Field Trip: Natural History Museum



School Highlights

Positive School Culture

- PTA Mileage Club
- River Rafter of the Month Assemblies
- Community Partnerships
- RowModel Program
- Community Garden Days
- Twain Pantry
- Principal for the Day



Twain Signature Events

- Kinder Jumpstart
- Harvest Festival
- Veteran's Day Assembly
- Loved Ones Day
- Read Across America Week
- PTA's Twainchella
- 5th Grade End-of-Year Activities



Total Enrollment

- Twain is the largest elementary school in LESD
- Total enrollment is 587
 - 306 Dual Immersion
 - 281 English

Paying It Forward

- 1 resident teacher
- 3 student teachers
- 4 university observers



Dual Immersion



- 20th Year Celebration
- Biliteracy Pathway Recognition (5th)
- Sra. Miranda, ELIRT, presenting at CABE
- Visit by PVPUSD
- *Save The Date - May 19th*



School Highlights

Overall Academic Achievement

Twain SBAC

- Outperforming neighboring school districts
- 7 students with perfect SBAC scores

Growth on California Dashboard



- EL Progress indicator has increased from red to green since 22-23

iReady Growth Targets (as of 12/25)

Reading

- 80% of students have already met their Typical Growth
- 41% of students have already met their Stretch Growth

Math

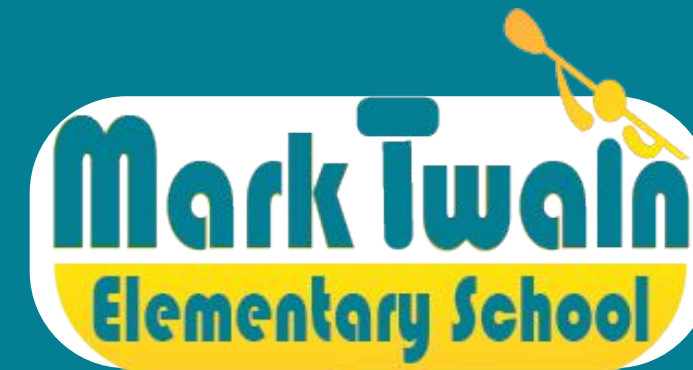
- 62% of students have already met their Typical Growth
- 37% of students have already met their Stretch Growth

2025-26 SBAC Projected Proficiency

English Language Arts (ELA) - 62%

Math - 65%

SBAC ELA 2025		SBAC MATH 2025	
% OF STUDENTS PROFICIENT		% OF STUDENTS PROFICIENT	
CA	48.82%	CA	37.3%
LAWNDALE	50.09%	LAWNDALE	37.92
MARK TWAIN	58.43%	MARK TWAIN	58.95%
Del Aire Elementary (Wiseburn)	58.09%	Del Aire Elementary (Wiseburn)	56.57%
Carr Elementary (Torrance USD)	56.25%	Carr Elementary (Torrance USD)	50.52%
La Ballona Elementary (Culver City USD)	53.99%	La Ballona Elementary (Culver City USD)	40.44%



Thank You

Any questions?

twain.lawndalesd.net

