

NEWPORT-MESA UNIFIED SCHOOL DISTRICT

**AUDIT REPORT
JUNE 30, 2025**



NEWPORT-MESA UNIFIED SCHOOL DISTRICT
TABLE OF CONTENTS
JUNE 30, 2025

FINANCIAL SECTION

Report on the Audit of the Financial Statements 1
Management’s Discussion and Analysis..... 4
Basic Financial Statements
 Government-wide Financial Statements
 Statement of Net Position..... 12
 Statement of Activities 13
 Fund Financial Statements
 Governmental Funds – Balance Sheet 14
 Reconciliation of the Governmental Funds Balance Sheet to the Statement of Net Position..... 15
 Governmental Funds – Statement of Revenues, Expenditures, and Changes in Fund Balances 17
 Reconciliation of the Governmental Funds Statement of Revenues, Expenditures, and Changes in Fund Balances to the Statement of Activities 18
 Proprietary Funds – Statement of Net Position 20
 Proprietary Funds – Statement of Revenues, Expenses, and Changes in Net Position 21
 Proprietary Funds – Statement of Cash Flows 22
 Fiduciary Funds – Statement of Net Position 23
 Fiduciary Funds – Statement of Changes in Net Position..... 24
Notes to Financial Statements 25

REQUIRED SUPPLEMENTARY INFORMATION

General Fund – Budgetary Comparison Schedule 65
Schedule of Changes in Total OPEB Liability and Related Ratios – District OPEB Plan 66
Schedule of Changes in Net OPEB Liability and Related Ratios – MPP Program 67
Schedule of the District’s Proportionate Share of the Net Pension Liability - CalSTRS 68
Schedule of the District’s Proportionate Share of the Net Pension Liability - CalPERS 69
Schedule of District Contributions - CalSTRS 70
Schedule of District Contributions - CalPERS 71
Notes to Required Supplementary Information 72

SUPPLEMENTARY INFORMATION

Schedule of Expenditures of Federal Awards..... 74
Schedule of Average Daily Attendance (ADA) 75
Schedule of Instructional Time 76
Schedule of Financial Trends and Analysis 77
Reconciliation of Annual Financial and Budget Report with Audited Financial Statements 78
Combining Statements – Non-Major Governmental Funds
 Combining Balance Sheet..... 79
 Combining Statement of Revenues, Expenditures, and Changes in Fund Balances..... 80
Notes to Supplementary Information 81

OTHER INFORMATION

Local Education Agency Organization Structure 82

**NEWPORT-MESA UNIFIED SCHOOL DISTRICT
TABLE OF CONTENTS
JUNE 30, 2025**

OTHER INDEPENDENT AUDITORS' REPORTS

Report on Internal Control Over Financial Reporting and on Compliance and Other Matters Based on an Audit of Financial Statements Performed in Accordance with *Government Auditing Standards*83
Report on Compliance For Each Major Federal Program; and Report on Internal Control Over Compliance Required by the Uniform Guidance85
Report on State Compliance and on Internal Control over Compliance for State Programs.....88

SCHEDULE OF FINDINGS AND QUESTIONED COSTS

Summary of Auditors' Results.....92
Financial Statement Findings93
Federal Award Findings and Questioned Costs94
State Award Findings and Questioned Costs95
Summary Schedule of Prior Audit Findings98

FINANCIAL SECTION

REPORT ON THE AUDIT OF THE FINANCIAL STATEMENTSIndependent Auditors' Report

Governing Board
Newport-Mesa Unified School District
Costa Mesa, California

Report on the Audit of the Financial Statements***Opinions***

We have audited the accompanying financial statements of the governmental activities, each major fund, and the aggregate remaining fund information of the Newport-Mesa Unified School District, as of and for the year ended June 30, 2025, and the related notes to the financial statements, which collectively comprise the Newport-Mesa Unified School District's basic financial statements as listed in the table of contents.

In our opinion, the financial statements referred to above present fairly, in all material respects, the respective financial position of the governmental activities, each major fund, and the aggregate remaining fund information of the Newport-Mesa Unified School District, as of June 30, 2025, and the respective changes in financial position and, where applicable, cash flows thereof for the year then ended in accordance with accounting principles generally accepted in the United States of America.

Basis for Opinions

We conducted our audit in accordance with auditing standards generally accepted in the United States of America and the standards applicable to financial audits contained in *Government Auditing Standards*, issued by the Comptroller General of the United States. Our responsibilities under those standards are further described in the Auditors' Responsibilities for the Audit of the Financial Statements section of our report. We are required to be independent of the Newport-Mesa Unified School District and to meet our other ethical responsibilities, in accordance with the relevant ethical requirements relating to our audit. We believe that the audit evidence we have obtained is sufficient and appropriate to provide a basis for our audit opinions.

Emphasis of Matter*Change in Accounting Principle*

As described in Note 1 to the financial statements, the Newport-Mesa Unified School District adopted new accounting guidance, Governmental Accounting Standards Board (GASB) Statement No. 101, *Compensated Absences*. Our opinion is not modified with respect to this matter.

Responsibilities of Management for the Financial Statements

Management is responsible for the preparation and fair presentation of the financial statements in accordance with accounting principles generally accepted in the United States of America, and for the design, implementation, and maintenance of internal control relevant to the preparation and fair presentation of financial statements that are free from material misstatement, whether due to fraud or error.

Responsibilities of Management for the Financial Statements (continued)

In preparing the financial statements, management is required to evaluate whether there are conditions or events, considered in the aggregate, that raise substantial doubt about the Newport-Mesa Unified School District's ability to continue as a going concern for twelve months beyond the financial statement date, including any currently known information that may raise substantial doubt shortly thereafter.

Auditor's Responsibilities for the Audit of the Financial Statements

Our objectives are to obtain reasonable assurance about whether the financial statements as a whole are free from material misstatement, whether due to fraud or error, and to issue an auditor's report that includes our opinions. Reasonable assurance is a high level of assurance but is not absolute assurance and therefore is not a guarantee that an audit conducted in accordance with generally accepted auditing standards and *Government Auditing Standards* will always detect a material misstatement when it exists. The risk of not detecting a material misstatement resulting from fraud is higher than for one resulting from error, as fraud may involve collusion, forgery, intentional omissions, misrepresentations, or the override of internal control. Misstatements are considered material if there is a substantial likelihood that, individually or in the aggregate, they would influence the judgment made by a reasonable user of the financial statements.

In performing an audit in accordance with generally accepted auditing standards and *Government Auditing Standards*, we:

- Exercise professional judgment and maintain professional skepticism throughout the audit.
- Identify and assess the risks of material misstatement of the financial statements, whether due to fraud or error, and design and perform audit procedures responsive to those risks. Such procedures include examining, on a test basis, evidence regarding the amounts and disclosures in the financial statements.
- Obtain an understanding of internal control relevant to the audit in order to design audit procedures that are appropriate in the circumstances, but not for the purpose of expressing an opinion on the effectiveness of the Newport-Mesa Unified School District's internal control. Accordingly, no such opinion is expressed.
- Evaluate the appropriateness of accounting policies used and the reasonableness of significant accounting estimates made by management, as well as evaluate the overall presentation of the financial statements.
- Conclude whether, in our judgment, there are conditions or events, considered in the aggregate, that raise substantial doubt about the Newport-Mesa Unified School District's ability to continue as a going concern for a reasonable period of time.

We are required to communicate with those charged with governance regarding, among other matters, the planned scope and timing of the audit, significant audit findings, and certain internal control-related matters that we identified during the audit.

Required Supplementary Information

Accounting principles generally accepted in the United States of America require that the required supplementary information, such as management's discussion and analysis, budgetary comparison information, schedule of changes in total OPEB liability and related ratios, schedules of proportionate share of net pension liability, and schedules of district contributions for pensions be presented to supplement the basic financial statements. Such information is the responsibility of management and, although not a part of the basic financial statements, is required by the Governmental Accounting Standards Board, who considers it to be an essential part of financial reporting for placing the basic financial statements in appropriate operational, economic, or historical context. We have applied certain limited procedures to the required supplementary information in accordance with auditing standards generally accepted in the United States of America, which consisted of inquiries of management about the methods of preparing the information and comparing the information for consistency with management's responses to our inquiries, the basic financial statements, and other knowledge we obtained during our audit of the basic financial statements. We do not express an opinion or provide any assurance on the information because the limited procedures do not provide us with sufficient evidence to express an opinion or provide any assurance.

Supplementary Information

Our audit was conducted for the purpose of forming opinions on the financial statements that collectively comprise the Newport-Mesa Unified School District's basic financial statements. The supplementary information listed in the table of contents, including the schedule of expenditures of federal awards, as required by Title 2 U.S. *Code of Federal Regulations (CFR) Part 200, Uniform Administrative Requirements, Cost Principles, and Audit Requirements for Federal Awards*, is presented for purposes of additional analysis and is not a required part of the basic financial statements. Such information is the responsibility of management and was derived from and relates directly to the underlying accounting and other records used to prepare the basic financial statements. The information has been subjected to the auditing procedures applied in the audit of the basic financial statements and certain additional procedures, including comparing and reconciling such information directly to the underlying accounting and other records used to prepare the basic financial statements or to the basic financial statements themselves, and other additional procedures in accordance with auditing standards generally accepted in the United States of America. In our opinion, the supplementary information is fairly stated, in all material respects, in relation to the basic financial statements as a whole.

Other Information

Management is responsible for the other information included in the annual report. The other information comprises the Local Education Agency Organization Structure but does not include the basic financial statements and our auditor's report thereon. Our opinions on the basic financial statements do not cover the other information, and we do not express an opinion or any form of assurance thereon.

In connection with our audit of the basic financial statements, our responsibility is to read the other information and consider whether a material inconsistency exists between the other information and the basic financial statements, or the other information otherwise appears to be materially misstated. If, based on the work performed, we conclude that an uncorrected material misstatement of the other information exists, we are required to describe it in our report.

Other Reporting Required by Government Auditing Standards

In accordance with *Government Auditing Standards*, we have also issued our report dated January 28, 2026 on our consideration of the Newport-Mesa Unified School District's internal control over financial reporting and on our tests of its compliance with certain provisions of laws, regulations, contracts, and grant agreements and other matters. The purpose of that report is solely to describe the scope of our testing of internal control over financial reporting and compliance and the results of that testing, and not to provide an opinion on the effectiveness of the Newport-Mesa Unified School District's internal control over financial reporting or on compliance. That report is an integral part of an audit performed in accordance with *Government Auditing Standards* in considering Newport-Mesa Unified School District's internal control over financial reporting and compliance.



San Diego, California
January 28, 2026

NEWPORT-MESA UNIFIED SCHOOL DISTRICT MANAGEMENT'S DISCUSSION AND ANALYSIS

INTRODUCTION

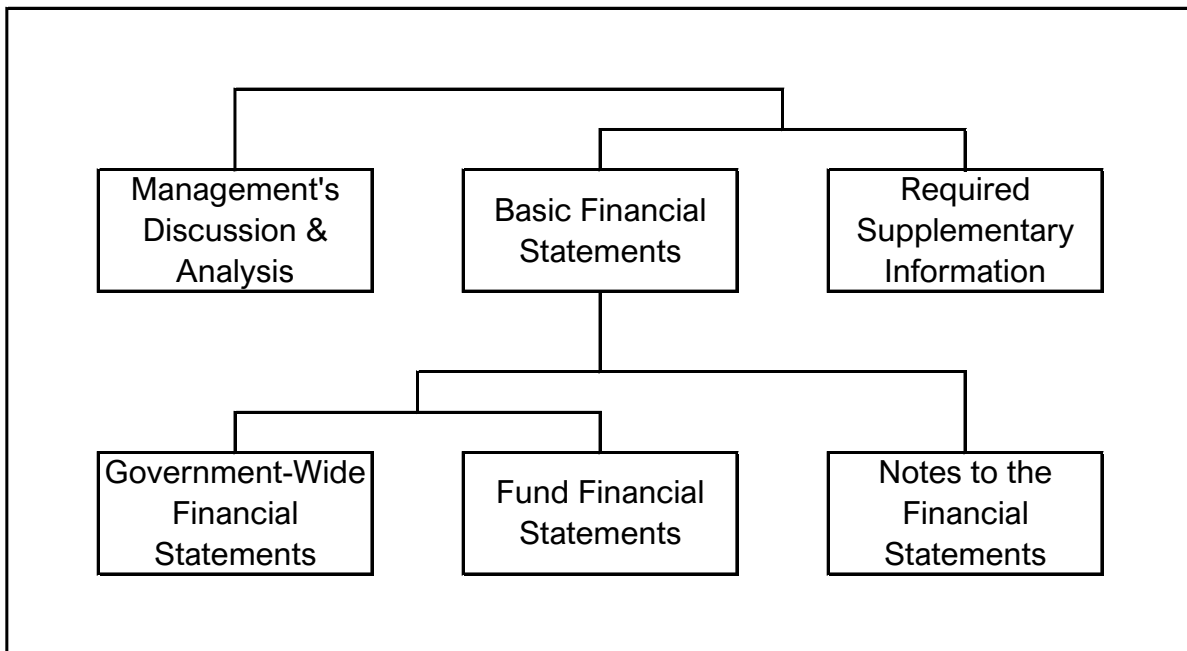
Our discussion and analysis of Newport-Mesa Unified School District's (District) financial performance provides an overview of the District's financial activities for the fiscal year ended June 30, 2025. It should be read in conjunction with the District's financial statements, which follow this section.

FINANCIAL HIGHLIGHTS

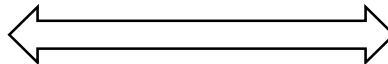
- ▶ The District's net position was \$(47,710,797) at June 30, 2025. This was a decrease of \$9,145,724 from the prior year, after restatement.
- ▶ Overall revenues were \$507,904,916 which were exceeded by expenses of \$517,050,640.

OVERVIEW OF FINANCIAL STATEMENTS

Components of the Financial Section



Summary



Detail

**NEWPORT-MESA UNIFIED SCHOOL DISTRICT
MANAGEMENT'S DISCUSSION AND ANALYSIS, continued
FOR THE YEAR ENDED JUNE 30, 2025**

OVERVIEW OF FINANCIAL STATEMENTS (continued)

Components of the Financial Section (continued)

This annual report consists of three parts – Management's Discussion and Analysis (this section), the basic financial statements, and required supplementary information. The three sections together provide a comprehensive overview of the District. The basic financial statements are comprised of two kinds of statements that present financial information from different perspectives:

- ▶ **Government-wide financial statements**, which comprise the first two statements, provide both short-term and long-term information about the entity's overall financial position.

- ▶ **Fund financial statements** focus on reporting the individual parts of District operations in more detail. The fund financial statements comprise the remaining statements.
 - ▶ **Governmental Funds** provide a detailed *short-term* view that helps you determine whether there are more or fewer financial resources that can be spent in the near future to finance the District's programs.
 - ▶ **Proprietary Funds** report services for which the District charges customers a fee. Like the government-wide statements, they provide both long- and short-term financial information.
 - ▶ **Fiduciary Funds** report resources held for the benefit of parties outside of the District. Fiduciary funds are not reflected in the government-wide statement because the resources of the fund are not available to support the District's own programs.

The financial statements also include notes that explain some of the information in the statements and provide more detailed data. The basic financial statements are followed by a section of required and other supplementary information that further explain and support the financial statements.

Government-Wide Statements

The government-wide statements report information about the District as a whole using accounting methods similar to those used by private-sector companies. The statement of net position includes all of the government's assets and liabilities. All of the current year's revenues and expenses are accounted for in the statement of activities, regardless of when cash is received or paid.

The two government-wide statements report the District's net position and how it has changed. Net position is one way to measure the District's financial health. Over time, increases or decreases in the District's net position are an indicator of whether its financial health is improving or deteriorating, respectively.

The government-wide financial statements of the District include governmental activities. All of the District's basic services are included here, such as regular education, food service, maintenance and general administration. Local control formula funding and federal and state grants finance most of these activities.

**NEWPORT-MESA UNIFIED SCHOOL DISTRICT
MANAGEMENT'S DISCUSSION AND ANALYSIS, continued
FOR THE YEAR ENDED JUNE 30, 2025**

FINANCIAL ANALYSIS OF THE ENTITY AS A WHOLE

Net Position

The District's net position was \$(47,710,797) at June 30, 2025, as reflected in the table below. Of this amount, \$(176,753,834) was unrestricted. Restricted net position is reported separately to show legal constraints from debt covenants and enabling legislation that limit the Governing Board's ability to use that net position for day-to-day operations.

	Governmental Activities		
	2025	2024	Net Change
ASSETS			
Current and other assets	\$ 327,773,185	\$ 406,154,839	\$ (78,381,654)
Capital assets	422,547,588	332,228,498	90,319,090
Total Assets	750,320,773	738,383,337	11,937,436
DEFERRED OUTFLOWS OF RESOURCES	126,012,943	132,608,879	(6,595,936)
LIABILITIES			
Current liabilities	109,810,344	64,131,055	45,679,289
Long-term liabilities	732,356,444	799,719,472	(67,363,028)
Total Liabilities	842,166,788	863,850,527	(21,683,739)
DEFERRED INFLOWS OF RESOURCES	81,877,725	39,653,617	42,224,108
NET POSITION			
Net investment in capital assets	83,204,955	142,457,113	(59,252,158)
Restricted	45,838,082	112,214,276	(66,376,194)
Unrestricted	(176,753,834)	(287,183,317)	110,429,483
Total Net Position	\$ (47,710,797)	\$ (32,511,928)	\$ (15,198,869)

**NEWPORT-MESA UNIFIED SCHOOL DISTRICT
MANAGEMENT'S DISCUSSION AND ANALYSIS, continued
FOR THE YEAR ENDED JUNE 30, 2025**

FINANCIAL ANALYSIS OF THE ENTITY AS A WHOLE (continued)

Changes in Net Position

The results of this year's operations for the District as a whole are reported in the Statement of Activities. The table below takes the information from the Statement and rearranges it slightly, so you can see our total revenues and expenses for the year.

	Governmental Activities		
	2025	2024	Net Change
REVENUES			
Program revenues			
Charges for services	\$ 1,481,828	\$ 1,103,377	\$ 378,451
Operating grants and contributions	72,289,613	86,827,012	(14,537,399)
Capital grants and contributions	6,285,616	2,643,282	3,642,334
General revenues			
Property taxes	393,019,783	372,617,049	20,402,734
Unrestricted federal and state aid	16,495,498	17,659,921	(1,164,423)
Other	18,332,578	20,715,813	(2,383,235)
Total Revenues	507,904,916	501,566,454	6,338,462
EXPENSES			
Instruction	249,759,956	259,804,248	(10,044,292)
Instruction-related services	66,411,186	64,748,932	1,662,254
Pupil services	46,545,982	46,290,321	255,661
General administration	40,832,959	28,223,960	12,608,999
Plant services	57,622,971	58,690,338	(1,067,367)
Ancillary services	8,038,399	7,966,628	71,771
Debt service	17,833,953	17,386,062	447,891
Other outgo	4,409,806	4,197,197	212,609
Depreciation	25,595,428	23,169,193	2,426,235
Total Expenses	517,050,640	510,476,879	6,573,761
Change in net position	(9,145,724)	(8,910,425)	(235,299)
Net Position - Beginning, as Restated*	(38,565,073)	(23,601,503)	(14,963,570)
Net Position - Ending	\$ (47,710,797)	\$ (32,511,928)	\$ (15,198,869)

*Beginning net position was restated for the 2025 year only.

The cost of all our governmental activities this year was \$517,050,640 (refer to the table above). The amount that our taxpayers ultimately financed for these activities through taxes was \$393,019,783 because a portion of the cost was paid by other governments and organizations who subsidized certain programs with grants and contributions.

**NEWPORT-MESA UNIFIED SCHOOL DISTRICT
MANAGEMENT’S DISCUSSION AND ANALYSIS, continued
FOR THE YEAR ENDED JUNE 30, 2025**

FINANCIAL ANALYSIS OF THE ENTITY AS A WHOLE (continued)

Changes in Net Position (continued)

In the table below, we have presented the net cost of each of the District’s functions. Net cost shows the financial burden that was placed on the District’s taxpayers by each of these functions. Providing this information allows our citizens to consider the cost of each function in comparison to the benefits they believe are provided by that function.

	Net Cost of Services	
	2025	2024
Instruction	\$ 203,939,700	\$ 213,077,381
Instruction-related services	60,237,146	54,937,811
Pupil services	30,934,597	27,136,826
General administration	37,785,702	23,717,690
Plant services	57,390,783	58,173,091
Ancillary services	4,232,688	5,143,018
Debt service	17,833,953	17,386,062
Transfers to other agencies	(956,414)	(2,837,864)
Depreciation	25,595,428	23,169,193
Total	\$ 436,993,583	\$ 419,903,208

FINANCIAL ANALYSIS OF THE DISTRICT’S MAJOR FUNDS

The financial performance of the District as a whole is reflected in its governmental funds as well. As the District completed this year, its governmental funds reported a combined fund balance of \$236,946,172, which is less than last year’s ending fund balance of \$350,657,789. The District’s General Fund had \$31,328,930 less in operating revenues than expenditures for the year ended June 30, 2025. The District’s Special Reserve Fund for Capital Outlay Projects had \$66,350,410 less in operating revenues than expenditures for the year ended June 30, 2025.

CURRENT YEAR BUDGET 2024-2025

During the fiscal year, budget revisions and appropriation transfers are presented to the Board for their approval on a regular basis to reflect changes to both revenues and expenditures that become known during the year. In addition, the Board of Education approves financial projections included with the Adopted Budget, First Interim, and Second Interim financial reports. The Unaudited Actuals reflect the District’s financial projections and current budget based on State and local financial information.

**NEWPORT-MESA UNIFIED SCHOOL DISTRICT
MANAGEMENT'S DISCUSSION AND ANALYSIS, continued
FOR THE YEAR ENDED JUNE 30, 2025**

CAPITAL ASSETS AND LONG-TERM LIABILITIES

Capital Assets

By the end of 2024-2025 the District had invested \$422,547,588 in capital assets, net of accumulated depreciation.

	Governmental Activities		
	2025	2024	Net Change
CAPITAL ASSETS			
Land	\$ 21,548,963	\$ 21,548,963	\$ -
Construction in progress	157,567,609	68,958,308	88,609,301
Land improvements	107,974,502	100,689,528	7,284,974
Buildings & improvements	529,396,432	511,664,474	17,731,958
Furniture & equipment	36,197,634	35,531,153	666,481
Less: Accumulated depreciation	(430,137,552)	(406,163,928)	(23,973,624)
Total	\$ 422,547,588	\$ 332,228,498	\$ 90,319,090

Long-Term Liabilities

At year-end, the District had \$732,356,444 in long-term liabilities, a decrease of 9.11% from last year's restated balance – as shown in the table below. More detailed information about the District's long-term liabilities is presented in footnotes to the financial statements.

	Governmental Activities		
	2025	2024	Net Change
LONG-TERM LIABILITIES			
Total general obligation bonds	\$ 345,884,300	\$ 346,233,553	\$ (349,253)
Financed purchases	-	7,464	(7,464)
Compensated absences*	19,918,049	14,669,241	5,248,808
Net OPEB liability	92,102,747	133,894,436	(41,791,689)
Net pension liability	293,144,617	321,767,248	(28,622,631)
Less: current portion of long-term liabilities	(18,693,269)	(10,799,325)	(7,893,944)
Total	\$ 732,356,444	\$ 805,772,617	\$ (73,416,173)

*Compensated Absences for 2024 was restated in order to record the District's compensated absences in accordance with GASB Statement No. 101 which supersedes GASB Statement No. 16 for the year ended June 30, 2025.

ECONOMIC FACTORS AND NEXT YEAR'S BUDGET

Several economic and fiscal factors could influence the District's financial condition in the coming year, including continued enrollment declines, uncertain Federal and State revenues, high pension obligations, and a cooling California economy.

**NEWPORT-MESA UNIFIED SCHOOL DISTRICT
MANAGEMENT'S DISCUSSION AND ANALYSIS, continued
FOR THE YEAR ENDED JUNE 30, 2025**

ECONOMIC FACTORS AND NEXT YEAR'S BUDGET (continued)

Long-Term Declining Enrollment

California's K–12 system continues to experience enrollment decline. Statewide enrollment fell another 0.5% in 2024–25 to about 5.8 million students, roughly 420,000 fewer than a decade ago. The Department of Finance projects an additional 586,000-student decline by 2033–34. Lower birth rates, high housing costs, and out-migration are key drivers, along with growing competition from charter and private schools. Because many costs—such as staffing and facilities—cannot easily adjust, revenue loss from declining Average Daily Attendance (ADA) creates structural fiscal challenges that require multi-year planning.

Revenue Uncertainties

- **Status of Proposition 98:** The 2025–26 State Budget sets the Proposition 98 guarantee at \$114.6 billion, slightly below earlier projections. To maintain K–12 funding commitments amid weaker tax receipts, the State relied on reserve drawdowns, internal borrowing, and limited deferrals. The outlook remains fragile since Proposition 98 revenues are highly sensitive to income-tax and capital-gains fluctuations. A market slowdown could trigger future adjustments. The Legislative Analyst's Office urges districts to budget cautiously and preserve flexibility given ongoing volatility.
- **Federal Funding Uncertainties:** Federal funding for K–12 education remains uncertain heading into 2025–26. Several large federal programs—including Title I, Title II, IDEA, and after-school and enrichment grants—face potential reductions or delays under current federal budget proposals and continuing appropriations negotiations. The U.S. Department of Education has also paused or delayed disbursement of certain previously approved formula and competitive grants, creating short-term cash-flow and planning challenges for districts. Analyses by nonpartisan agencies such as the Congressional Budget Office and the Learning Policy Institute note that up to \$5–6 billion in K-12 formula funds nationwide remain at risk of reduction or deferral if congressional appropriations are not finalized. While districts are expected to continue receiving baseline allocations during temporary funding resolutions, long-term federal support levels for education could decline modestly in real terms, requiring districts to plan for possible funding interruptions or reductions in future years.

Pension Liabilities and Employer Rates

The District participates in CalSTRS and CalPERS, both of which remain underfunded and continue to exert upward pressure on budgets. For 2025–26, the CalSTRS employer rate is 19.10%, and the CalPERS Schools Pool rate is 26.81%. These elevated rates—well above pre-2014 levels—will likely persist through the decade as both systems address unfunded liabilities. Districts must continue to account for escalating pension costs in long-range projections.

Economic and Market Conditions

California's economy has cooled following its post-pandemic rebound. High interest rates, weaker venture investment, and commercial-real-estate softness have slowed growth, especially in tech-dependent regions. The UCLA Anderson Forecast (Fall 2025) expects subdued growth into 2026, with unemployment near 5%. Inflation has eased, but interest-rate uncertainty continues to constrain housing and business investment.

Because the State's tax base depends heavily on capital-gains income, stock-market volatility remains a major risk to General Fund and Proposition 98 revenues. Fiscal advisors therefore recommend that districts maintain prudent reserves and avoid long-term commitments based on one-time revenue gains.

Summary

Declining enrollment, volatile revenues, persistent pension costs, and broader economic uncertainty all contribute to a challenging fiscal environment for California school districts. The District's 2025–26 budget reflects these conditions through conservative revenue assumptions, strong reserves, and continued monitoring of State fiscal trends.

**NEWPORT-MESA UNIFIED SCHOOL DISTRICT
MANAGEMENT'S DISCUSSION AND ANALYSIS, continued
FOR THE YEAR ENDED JUNE 30, 2025**

CONTACTING THE DISTRICT'S FINANCIAL MANAGEMENT

This financial report is designed to provide our citizens, taxpayers, students, and investors and creditors with a general overview of the District's finances and to show the District's accountability for the money it receives. If you have questions about this report or need any additional financial information, contact the Business Office, the Assistant Superintendent, Chief Business Official at 2985 Bear Street, Building A, Costa Mesa, California 92626-4300.

NEWPORT-MESA UNIFIED SCHOOL DISTRICT
STATEMENT OF NET POSITION
JUNE 30, 2025

	Governmental Activities
ASSETS	
Cash and investments	\$ 308,805,036
Accounts receivable	18,403,815
Inventory	255,344
Prepaid expenses	308,990
Capital assets:	
Capital assets, not depreciated	179,116,572
Capital assets, net of accumulated depreciation	243,431,016
Total Assets	750,320,773
DEFERRED OUTFLOWS OF RESOURCES	
Deferred outflows related to pensions	110,450,577
Deferred outflows related to OPEB	9,063,025
Deferred amount on refunding	6,499,341
Total Deferred Outflows of Resources	126,012,943
LIABILITIES	
Accrued liabilities	75,245,020
Unearned revenue	4,315,123
Claims liabilities	11,556,932
Long-term liabilities, current portion	18,693,269
Long-term liabilities, non-current portion	732,356,444
Total Liabilities	842,166,788
DEFERRED INFLOWS OF RESOURCES	
Deferred inflows related to pensions	27,105,261
Deferred inflows related to OPEB	54,772,464
Total Deferred Inflows of Resources	81,877,725
NET POSITION	
Net investment in capital assets	83,204,955
Restricted:	
Capital projects	3,437,507
Debt service	15,937,117
Educational programs	24,482,050
Food service	43,740
Associated student body	1,937,668
Unrestricted	(176,753,834)
Total Net Position	\$ (47,710,797)

The accompanying notes are an integral part of these financial statements.

**NEWPORT-MESA UNIFIED SCHOOL DISTRICT
STATEMENT OF ACTIVITIES
FOR THE YEAR ENDED JUNE 30, 2025**

Function/Programs	Expenses	Program Revenues			Net (Expenses) Revenues and Changes in Net Position
		Charges for Services	Operating Grants and Contributions	Capital Grants and Contributions	
GOVERNMENTAL ACTIVITIES					
Instruction	\$ 249,759,956	\$ 411,953	\$ 39,122,687	\$ 6,285,616	\$ (203,939,700)
Instruction-related services					
Instructional supervision and administration	29,928,569	58,411	5,525,807	-	(24,344,351)
Instructional library, media, and technology	5,812,071	1,018	135,125	-	(5,675,928)
School site administration	30,670,546	17,150	436,529	-	(30,216,867)
Pupil services					
Home-to-school transportation	7,749,482	59	34,210	-	(7,715,213)
Food services	12,905,360	18,550	11,255,945	-	(1,630,865)
All other pupil services	25,891,140	36,772	4,265,849	-	(21,588,519)
General administration					
Centralized data processing	15,936,614	-	11,683	-	(15,924,931)
All other general administration	24,896,345	2,204	3,033,370	-	(21,860,771)
Plant services	57,622,971	1,837	230,351	-	(57,390,783)
Ancillary services	8,038,399	26,010	3,779,701	-	(4,232,688)
Interest on long-term debt	17,833,953	-	-	-	(17,833,953)
Other outgo	4,409,806	907,864	4,458,356	-	956,414
Depreciation (unallocated)	25,595,428	-	-	-	(25,595,428)
Total Governmental Activities	\$ 517,050,640	\$ 1,481,828	\$ 72,289,613	\$ 6,285,616	(436,993,583)
General revenues					
Taxes and subventions					
Property taxes, levied for general purposes					374,829,564
Property taxes, levied for debt service					17,485,590
Property taxes, levied for other specific purposes					704,629
Federal and state aid not restricted for specific purposes					16,495,498
Interest and investment earnings					13,768,663
Miscellaneous					4,563,915
Subtotal, General Revenue					427,847,859
CHANGE IN NET POSITION					(9,145,724)
Net Position - Beginning, as Restated					(38,565,073)
Net Position - Ending					\$ (47,710,797)

The accompanying notes are an integral part of these financial statements.

**NEWPORT-MESA UNIFIED SCHOOL DISTRICT
GOVERNMENTAL FUNDS
BALANCE SHEET
JUNE 30, 2025**

	General Fund	Special Reserve Fund for Capital Outlay Projects	Non-Major Governmental Funds	Total Governmental Funds
ASSETS				
Cash and investments	\$ 179,244,232	\$ 84,999,445	\$ 32,230,516	\$ 296,474,193
Accounts receivable	13,819,846	585,518	3,958,310	18,363,674
Due from other funds	4,846,364	12,081,152	904,607	17,832,123
Stores inventory	82,866	-	172,478	255,344
Prepaid expenditures	308,990	-	-	308,990
Total Assets	\$ 198,302,298	\$ 97,666,115	\$ 37,265,911	\$ 333,234,324
LIABILITIES				
Accrued liabilities	\$ 36,298,714	\$ 35,616,503	\$ 2,227,885	\$ 74,143,102
Due to other funds	10,784,863	-	7,045,064	17,829,927
Unearned revenue	1,682,984	-	2,632,139	4,315,123
Total Liabilities	48,766,561	35,616,503	11,905,088	96,288,152
FUND BALANCES				
Nonspendable	541,855	-	172,478	714,333
Restricted	21,665,271	-	25,188,345	46,853,616
Assigned	72,389,074	62,049,612	-	134,438,686
Unassigned	54,939,537	-	-	54,939,537
Total Fund Balances	149,535,737	62,049,612	25,360,823	236,946,172
Total Liabilities and Fund Balances	\$ 198,302,298	\$ 97,666,115	\$ 37,265,911	\$ 333,234,324

The accompanying notes are an integral part of these financial statements.

**NEWPORT-MESA UNIFIED SCHOOL DISTRICT
RECONCILIATION OF THE GOVERNMENTAL FUNDS BALANCE SHEET TO THE STATEMENT OF NET
POSITION
JUNE 30, 2025**

Total Fund Balance - Governmental Funds \$ 236,946,172

Amounts reported for assets and liabilities for governmental activities in the statement of net position are different from amounts reported in governmental funds because:

Capital assets:

In governmental funds, only current assets are reported. In the statement of net position, all assets are reported, including capital assets and accumulated depreciation:

Capital assets	\$ 852,685,140	
Accumulated depreciation	<u>(430,137,552)</u>	422,547,588

Deferred amount on refunding:

In governmental funds, the net effect of refunding bonds is recognized when debt is issued, whereas this amount is deferred and amortized in the government-wide financial statements:

6,499,341

Unmatured interest on long-term debt:

In governmental funds, interest on long-term debt is not recognized until the period in which it matures and is paid. In the government-wide statement of activities, it is recognized in the period that it is incurred. The additional liability for unmaturing interest owing at the end of the period was:

(973,208)

Long-term liabilities:

In governmental funds, only current liabilities are reported. In the statement of net position, all liabilities, including long-term liabilities, are reported. Long-term liabilities relating to governmental activities consist of:

Total general obligation bonds	\$ 345,884,300	
Compensated absences	19,918,049	
Net OPEB liability	92,102,747	
Net pension liability	<u>293,144,617</u>	(751,049,713)

Deferred outflows and inflows of resources relating to pensions:

In governmental funds, deferred outflows and inflows of resources relating to pensions are not reported because they are applicable to future periods. In the statement of net position, deferred outflows and inflows of resources relating to pensions are reported.

Deferred outflows of resources related to pensions	\$ 110,450,577	
Deferred inflows of resources related to pensions	<u>(27,105,261)</u>	83,345,316

(continued on the next page)

**NEWPORT-MESA UNIFIED SCHOOL DISTRICT
RECONCILIATION OF THE GOVERNMENTAL FUNDS BALANCE SHEET TO THE STATEMENT OF NET
POSITION, continued
JUNE 30, 2025**

Deferred outflows and inflows of resources relating to OPEB:

In governmental funds, deferred outflows and inflows of resources relating to OPEB are not reported because they are applicable to future periods. In the statement of net position, deferred outflows and inflows of resources relating to OPEB are reported.

Deferred outflows of resources related to OPEB	\$ 9,063,025	
Deferred inflows of resources related to OPEB	<u>(54,772,464)</u>	(45,709,439)

Internal service funds:

Internal service funds are used to conduct certain activities for which costs are charged to other funds on a full cost-recovery basis. Because internal service funds are presumed to operate for the benefit of governmental activities, assets, deferred outflows of resources, liabilities, and deferred inflows of resources of internal service funds are reported with governmental activities in the statement of net position. Net position for internal service funds is:

683,146

Total Net Position - Governmental Activities	<u>\$ (47,710,797)</u>
---	------------------------

**NEWPORT-MESA UNIFIED SCHOOL DISTRICT
GOVERNMENTAL FUNDS
STATEMENT OF REVENUES, EXPENDITURES, AND CHANGES IN FUND BALANCES
FOR THE YEAR ENDED JUNE 30, 2025**

	General Fund	Special Reserve Fund for Capital Outlay Projects	Non-Major Governmental Funds	Total Governmental Funds
REVENUES				
LCFF sources	\$ 384,627,798	\$ -	\$ -	\$ 384,627,798
Federal sources	12,172,498	-	5,865,176	18,037,674
Other state sources	57,361,816	-	14,192,212	71,554,028
Other local sources	26,004,677	4,217,505	25,496,009	55,718,191
Total Revenues	480,166,789	4,217,505	45,553,397	529,937,691
EXPENDITURES				
Current				
Instruction	273,678,015	-	3,176,733	276,854,748
Instruction-related services				
Instructional supervision and administration	31,995,987	-	479,043	32,475,030
Instructional library, media, and technology	6,149,820	-	-	6,149,820
School site administration	33,469,032	-	145,634	33,614,666
Pupil services				
Home-to-school transportation	7,883,355	-	-	7,883,355
Food services	535,341	-	12,512,817	13,048,158
All other pupil services	28,904,345	-	-	28,904,345
General administration				
Centralized data processing	16,120,189	-	-	16,120,189
All other general administration	24,256,345	-	693,747	24,950,092
Plant services				
Facilities acquisition and construction	20,387,835	70,547,316	24,979,366	115,914,517
Ancillary services	5,396,090	-	2,868,736	8,264,826
Transfers to other agencies	4,386,866	-	-	4,386,866
Debt service				
Principal	7,464	-	9,474,891	9,482,355
Interest and other	-	20,599	7,222,905	7,243,504
Total Expenditures	511,495,719	70,567,915	61,585,674	643,649,308
Excess (Deficiency) of Revenues Over Expenditures	(31,328,930)	(66,350,410)	(16,032,277)	(113,711,617)
Other Financing Sources (Uses)				
Transfers in	10,475,000	49,165,390	868,103	60,508,493
Transfers out	(11,343,103)	-	(49,165,390)	(60,508,493)
Net Financing Sources (Uses)	(868,103)	49,165,390	(48,297,287)	-
NET CHANGE IN FUND BALANCE	(32,197,033)	(17,185,020)	(64,329,564)	(113,711,617)
Fund Balance - Beginning	181,732,770	79,234,632	89,690,387	350,657,789
Fund Balance - Ending	\$ 149,535,737	\$ 62,049,612	\$ 25,360,823	\$ 236,946,172

The accompanying notes are an integral part of these financial statements.

**NEWPORT-MESA UNIFIED SCHOOL DISTRICT
RECONCILIATION OF THE GOVERNMENTAL FUNDS STATEMENT OF REVENUES, EXPENDITURES,
AND CHANGES IN FUND BALANCES TO THE STATEMENT OF ACTIVITIES
FOR THE YEAR ENDED JUNE 30, 2025**

Net Change in Fund Balances - Governmental Funds \$ (113,711,617)

Amounts reported for governmental activities in the statement of activities are different from amounts reported in governmental funds because:

Capital outlay:

In governmental funds, the costs of capital assets are reported as expenditures in the period when the assets are acquired. In the statement of activities, costs of capital assets are allocated over their estimated useful lives as depreciation expense. The difference between capital outlay expenditures and depreciation expense for the period is:

Expenditures for capital outlay:	\$ 115,914,518	
Depreciation expense:	<u>(25,595,428)</u>	90,319,090

Debt service:

In governmental funds, repayments of long-term debt are reported as expenditures. In the government-wide statements, repayments of long-term debt are reported as reductions of liabilities. Expenditures for repayment of the principal portion of long-term debt were: 12,792,464

Deferred amounts on refunding:

In governmental funds, deferred amounts on refunding are recognized in the period they are incurred. In the government-wide statements, the deferred amounts on refunding are amortized over the life of the debt. The net effect of the deferred amounts on refunding during the period was: (1,624,835)

Unmatured interest on long-term debt:

In governmental funds, interest on long-term debt is recognized in the period that it becomes due. In the government-wide statement of activities, it is recognized in the period it is incurred. Unmatured interest owing at the end of the period, less matured interest paid during the period but owing from the prior period, was: 137,084

Accreted interest on long-term debt:

In governmental funds, accreted interest on capital appreciation bonds is not recorded as an expenditure from current sources. In the government-wide statement of activities, however, this is recorded as interest expense for the period. (13,433,699)

Compensated absences:

In governmental funds, compensated absences are measured by the amounts paid during the period. In the statement of activities, compensated absences are measured by the amount earned. The difference between compensated absences paid and compensated absences earned, was: (5,248,808)

(continued on the next page)

**NEWPORT-MESA UNIFIED SCHOOL DISTRICT
RECONCILIATION OF THE GOVERNMENTAL FUNDS STATEMENT OF REVENUES, EXPENDITURES,
AND CHANGES IN FUND BALANCES TO THE STATEMENT OF ACTIVITIES, continued
FOR THE YEAR ENDED JUNE 30, 2025**

Postemployment benefits other than pensions (OPEB):

In governmental funds, OPEB expenses are recognized when employer OPEB contributions are made. In the statement of activities, OPEB expenses are recognized on the accrual basis. This year, the difference between OPEB expenses and actual employer OPEB contributions was: 1,818,449

Pensions:

In governmental funds, pension costs are recognized when employer contributions are made. In the government-wide statement of activities, pension costs are recognized on the accrual basis. This year, the difference between accrual-basis pension costs and employer contributions was: 21,400,662

Amortization of debt issuance premium or discount:

In governmental funds, if debt is issued at a premium or at a discount, the premium or discount is recognized as an Other Financing Source or an Other Financing Use in the period it is incurred. In the government-wide statements, the premium or discount is amortized over the life of the debt. Amortization of premium or discount for the period is: 997,952

Internal Service Funds:

Internal service funds are used to conduct certain activities for which costs are charged to other funds on a full cost-recovery basis. Because internal service funds are presumed to benefit governmental activities, internal service activities are reported as governmental in the statement of activities. The net increase or decrease in internal service funds was: (2,592,466)

Change in Net Position of Governmental Activities \$ (9,145,724)

**NEWPORT-MESA UNIFIED SCHOOL DISTRICT
 PROPRIETARY FUNDS
 STATEMENT OF NET POSITION
 JUNE 30, 2025**

	<u>Governmental Activities Internal Service Fund</u>
ASSETS	
Current assets	
Cash and investments	\$ 12,330,843
Accounts receivable	40,141
Total Assets	<u>12,370,984</u>
LIABILITIES	
Current liabilities	
Accrued liabilities	128,710
Due to other funds	2,196
Total current liabilities	<u>130,906</u>
Non-current liabilities	
Claims liabilities	11,556,932
Total non-current liabilities	<u>11,556,932</u>
Total Liabilities	<u>11,687,838</u>
NET POSITION	
Restricted	683,146
Total Net Position	<u>\$ 683,146</u>

The accompanying notes are an integral part of these financial statements.

**NEWPORT-MESA UNIFIED SCHOOL DISTRICT
 PROPRIETARY FUNDS
 STATEMENT OF REVENUES, EXPENSES, AND CHANGES IN NET POSITION
 FOR THE YEAR ENDED JUNE 30, 2025**

	Governmental Activities
	Internal Service Fund
	Fund
OPERATING REVENUES	
Charges for services	\$ 3,101,522
Other local revenues	1,331
Total operating revenues	<u>3,102,853</u>
OPERATING EXPENSES	
Salaries and benefits	187,080
Professional services	6,293,455
Total operating expenses	<u>6,480,535</u>
Operating income/(loss)	<u>(3,377,682)</u>
NON-OPERATING REVENUES/(EXPENSES)	
Interest income	785,216
Total non-operating revenues/(expenses)	<u>785,216</u>
CHANGE IN NET POSITION	(2,592,466)
Net Position - Beginning	<u>3,275,612</u>
Net Position - Ending	<u>\$ 683,146</u>

The accompanying notes are an integral part of these financial statements.

**NEWPORT-MESA UNIFIED SCHOOL DISTRICT
 PROPRIETARY FUNDS
 STATEMENT OF CASH FLOWS
 FOR THE YEAR ENDED JUNE 30, 2025**

	Governmental Activities
	Internal Service Fund
Cash flows from operating activities	
Cash received from user charges	\$ 3,144,769
Cash payments for payroll, insurance, and operating costs	(14,104,332)
Net cash provided by (used for) operating activities	<u>(10,959,563)</u>
Cash flows from investing activities	
Interest received	785,216
Net cash provided by (used for) investing activities	<u>785,216</u>
NET INCREASE (DECREASE) IN CASH AND CASH EQUIVALENTS	<u>(10,174,347)</u>
 CASH AND CASH EQUIVALENTS	
Beginning of year	22,505,190
End of year	<u>\$ 12,330,843</u>
 Reconciliation of operating income (loss) to cash provided by (used for) operating activities	
Operating income/(loss)	\$ (3,377,682)
Adjustments to reconcile operating income (loss) to net cash provided by (used in) operating activities:	
Changes in assets and liabilities:	
(Increase) decrease in accounts receivables	41,916
Increase (decrease) in accrued liabilities	(87,613)
Increase (decrease) in due to other funds	(10,000,073)
Increase (decrease) in claims liabilities	2,463,889
Net cash provided by (used for) operating activities	<u>\$ (10,959,563)</u>

The accompanying notes are an integral part of these financial statements.

NEWPORT-MESA UNIFIED SCHOOL DISTRICT
FIDUCIARY FUNDS
STATEMENT OF NET POSITION
JUNE 30, 2025

	<u>Custodial Fund</u>
	<u>Flexible Benefits Account</u>
ASSETS	
Cash and investments	\$ 432,454
Total Assets	<u>432,454</u>
NET POSITION	
Restricted	\$ 432,454
Total Net Position	<u>\$ 432,454</u>

The accompanying notes are an integral part of these financial statements.

**NEWPORT-MESA UNIFIED SCHOOL DISTRICT
 FIDUCIARY FUNDS
 STATEMENT OF CHANGES IN NET POSITION
 FOR THE YEAR ENDED JUNE 30, 2025**

	<u>Custodial Fund</u>
	<u>Flexible Benefits Account</u>
ADDITIONS	
Other revenues	\$ 1,018,973
Total Additions	<u>1,018,973</u>
DEDUCTIONS	
Other expenditures	<u>965,827</u>
Total Deductions	<u>965,827</u>
CHANGE IN NET POSITION	53,146
Net Position - Beginning	<u>379,308</u>
Net Position - Ending	<u>\$ 432,454</u>

The accompanying notes are an integral part of these financial statements.

**NEWPORT-MESA UNIFIED SCHOOL DISTRICT
NOTES TO FINANCIAL STATEMENTS
JUNE 30, 2025**

NOTE 1 – SUMMARY OF SIGNIFICANT ACCOUNTING POLICIES

A. Financial Reporting Entity

The Newport-Mesa Unified School District (the “District”) accounts for its financial transactions in accordance with the policies and procedures of the Department of Education’s *California School Accounting Manual*. The accounting policies of the District conform to generally accepted accounting principles as prescribed by the Governmental Accounting Standards Board (GASB) and the American Institute of Certified Public Accountants (AICPA).

The District operates under a locally elected Board form of government and provides educational services to grades TK-12 as mandated by the state. A reporting entity is comprised of the primary government, component units, and other organizations that are included to ensure the financial statements are not misleading. The primary government of the District consists of all funds, departments and agencies that are not legally separate from the District. For the District, this includes general operations, food service, and student-related activities.

B. Component Units

Component units are legally separate organizations for which the District is financially accountable. Component units may also include organizations that are fiscally dependent on the District in that the District approves their budget, the issuance of their debt or the levying of their taxes. In addition, component units are other legally separate organizations for which the District is not financially accountable but the nature and significance of the organization’s relationship with the District is such that exclusion would cause the District’s financial statements to be misleading or incomplete. The District has no such component units.

C. Joint Ventures

The Bonita Canyon Public Facilities Financing Authority (Authority) is a joint venture formed by the City of Newport Beach, the Irvine Unified School District, and the Newport-Mesa Unified School District. The Authority’s Board is comprised of two members appointed by each of the member agencies. The Authority created Community Facilities District 98-1 to finance public facilities that will benefit the properties within their boundaries. The District does not include the Authority as a component unit, as the District is not financially accountable for the Authority’s activities and the Authority is not fiscally dependent on the District. Complete separate financial statements can be obtained at the Newport-Mesa Unified School District, 2985 Bear Street, Costa Mesa, California.

D. Basis of Presentation

Government-Wide Statements. The statement of net position and the statement of activities display information about the primary government (the District). These statements include the financial activities of the overall government, except for fiduciary activities. Eliminations have been made to minimize the double-counting of internal activities. Governmental activities generally are financed through taxes, intergovernmental revenue, and other non-exchange transactions.

The statement of activities presents a comparison between direct expenses and program revenue for each function of the District’s governmental activities. Direct expenses are those that are specifically associated with a program or function and, therefore, are clearly identifiable to a particular function. Indirect expense allocations that have been made in the funds have been reserved for the statement of activities. Program revenues include charges paid by the recipients of the goods or services offered by the programs and grants and contributions that are restricted to meeting of operational or capital requirements of a particular program. Revenues that are not classified as program revenues are presented as general revenues. The comparison of program revenues and expenses identifies the extent to which each program or business segment is self-financing or draws from the general revenues of the District.

**NEWPORT-MESA UNIFIED SCHOOL DISTRICT
NOTES TO FINANCIAL STATEMENTS, continued
JUNE 30, 2025**

NOTE 1 – SUMMARY OF SIGNIFICANT ACCOUNTING POLICIES (continued)

D. Basis of Presentation (continued)

Fund Financial Statements. The fund financial statements provide information about the District's funds, including its proprietary and fiduciary funds. Separate statements for each fund category – governmental, proprietary and fiduciary – are presented. The emphasis of fund financial statements is on major governmental funds, each displayed in a separate column. All remaining governmental funds are aggregated and reported as non-major funds.

Governmental funds are used to account for activities that are governmental in nature. Governmental activities are typically tax-supported and include education of pupils, operation of food service and child development programs, construction and maintenance of school facilities, and repayment of long-term debt.

Proprietary funds are used to account for activities that are more business-like than government-like in nature. Business-type activities include those for which a fee is charged to external users or to other organizational units of the District, normally on a full cost-recovery basis. Proprietary funds are generally intended to be self-supporting.

Fiduciary funds are used to account for resources held for the benefit of parties outside of the District that cannot be used to support the District's own programs.

Major Governmental Funds

General Fund: The General Fund is the main operating fund of the District. It is used to account for all activities except those that are required to be accounted for in another fund. In keeping with the minimum number of funds principle, all of the District's activities are reported in the General Fund unless there is a compelling reason to account for an activity in another fund. A District may have only one General Fund.

Special Reserve Fund for Capital Outlay Projects: This fund exists primarily to provide for the accumulation of General Fund moneys for capital outlay purposes (*Education Code Section 42840*).

Non-Major Governmental Funds

Special Revenue Funds: Special revenue funds are used to account for and report the proceeds of specific revenue sources that are restricted or committed to expenditures for specified purposes other than debt service or capital projects. The District maintains the following special revenue funds:

Student Activity Fund: This fund may be used to account for student body activities that do not meet the fiduciary criteria established in GASB Statement No. 84.

Child Development Fund: This fund is used to account separately for federal, state, and local revenues to operate child development programs. All moneys received by the District for, or from the operation of, child development services covered under the Child Care and Development Services Act (*Education Code Section 8200 et seq.*) shall be deposited into this fund. The moneys may be used only for expenditures for the operation of child development programs. The costs incurred in the maintenance and operation of child development services shall be paid from this fund, with accounting to reflect specific funding sources (*Education Code Section 8328*).

NEWPORT-MESA UNIFIED SCHOOL DISTRICT
NOTES TO FINANCIAL STATEMENTS, continued
JUNE 30, 2025

NOTE 1 – SUMMARY OF SIGNIFICANT ACCOUNTING POLICIES (continued)

D. Basis of Presentation (continued)

Non-Major Governmental Funds (continued)

Special Revenue Funds (continued):

Cafeteria Fund: This fund is used to account separately for federal, state, and local resources to operate the food service program (*Education Code Sections 38090–38093*). The Cafeteria Fund shall be used only for those expenditures authorized by the governing board as necessary for the operation of the District's food service program (*Education Code Sections 38091 and 38100*).

Capital Project Funds: Capital project funds are established to account for financial resources to be used for the acquisition or construction of major capital facilities (other than those financed by proprietary funds and trust funds).

Building Fund: This fund exists primarily to account separately for proceeds from the sale of bonds (*Education Code Section 15146*) and may not be used for any purposes other than those for which the bonds were issued. Other authorized revenues to the Building Fund are proceeds from the sale or lease-with-option-to-purchase of real property (*Education Code Section 17462*) and revenue from rentals and leases of real property specifically authorized for deposit into the fund by the governing board (*Education Code Section 41003*).

Capital Facilities Fund: This fund is used primarily to account separately for moneys received from fees levied on developers or other agencies as a condition of approving a development (*Education Code Sections 17620–17626*). The authority for these levies may be county/city ordinances (*Government Code Sections 65970–65981*) or private agreements between the District and the developer. Interest earned in the Capital Facilities Fund is restricted to that fund (*Government Code Section 66006*).

County School Facilities Fund: This fund is established pursuant to *Education Code Section 17070.43* to receive apportionments from the 1998 State School Facilities Fund (Proposition 1A), the 2002 State School Facilities Fund (Proposition 47), or the 2004 State School Facilities Fund (Proposition 55) authorized by the State Allocation Board for new school facility construction, modernization projects, and facility hardship grants, as provided in the Leroy F. Greene School Facilities Act of 1998 (*Education Code Section 17070 et seq.*).

Debt Service Funds: Debt service funds are established to account for the accumulation of resources for and the payment of principal and interest on general long-term debt.

Bond Interest and Redemption Fund: This fund is used for the repayment of bonds issued for the District (*Education Code Sections 15125–15262*). The board of supervisors of the county issues the bonds. The proceeds from the sale of the bonds are deposited in the county treasury to the Building Fund of the District. Any premiums or accrued interest received from the sale of the bonds must be deposited in the Bond Interest and Redemption Fund of the District. The county auditor maintains control over the District's Bond Interest and Redemption Fund. The principal and interest on the bonds must be paid by the county treasurer from taxes levied by the county auditor-controller.

**NEWPORT-MESA UNIFIED SCHOOL DISTRICT
NOTES TO FINANCIAL STATEMENTS, continued
JUNE 30, 2025**

NOTE 1 – SUMMARY OF SIGNIFICANT ACCOUNTING POLICIES (continued)

D. Basis of Presentation (continued)

Proprietary Funds

Internal Service Funds: Internal service funds are created principally to render services to other organizational units of the District on a cost-reimbursement basis. These funds are designed to be self-supporting with the intent of full recovery of costs, including some measure of the cost of capital assets, through user fees and charges.

Self-Insurance Fund: Self-insurance funds are used to separate moneys received for self-insurance activities from other operating funds of the District. Separate funds may be established for each type of self-insurance activity, such as workers' compensation, health and welfare, and deductible property loss (*Education Code Section 17566*).

Fiduciary Funds

Fiduciary fund reporting focuses on net position and changes in net position. The fiduciary fund category is split into four classifications: pension (and other employee benefit) trust funds, investment trust funds, private-purpose trust funds and custodial funds. Trust funds are distinguished from custodial funds by the existence of a trust agreement or equivalent arrangements that have certain characteristics. Custodial funds are used to report fiduciary activities that are not required to be reported in a trust fund.

Flexible Benefits Account: This fund exists to account separately for amounts held on behalf of employees.

E. Basis of Accounting – Measurement Focus

Government-Wide, Proprietary, and Fiduciary Fund Financial Statements

The government-wide, proprietary, and fiduciary fund financial statements are reported using the economic resources measurement focus. The government-wide, proprietary, and fiduciary fund financial statements are reported using the accrual basis of accounting. Revenues are recorded when earned and expenses are recorded at the time liabilities are incurred, regardless of when the related cash flows take place.

Net Position equals assets and deferred outflows of resources minus liabilities and deferred inflows of resources. Net investment in capital assets consists of capital assets, net of accumulated depreciation, reduced by the outstanding balances of any borrowings used for the acquisition, construction or improvement of those assets. The net position should be reported as restricted when constraints placed on its use are either externally imposed by creditors (such as through debt covenants), grantors, contributors, or laws or regulations of other governments or imposed by law through constitutional provisions or enabling legislation. The net position restricted for other activities results from special revenue funds and the restrictions on their use.

Proprietary funds distinguish operating revenues and expenses from non-operating items. Operating revenues and expenses generally result from providing services and producing and delivering goods in connection with a proprietary fund's principal ongoing operations. The principal operating revenues of the internal service fund are charges to other funds for self-insurance costs. Operating expenses for internal service funds include the costs of insurance premiums and claims related to self-insurance.

Governmental Funds

Basis of accounting refers to when revenues and expenditures are recognized in the accounts and reported in the financial statements. Governmental funds use the modified accrual basis of accounting.

**NEWPORT-MESA UNIFIED SCHOOL DISTRICT
NOTES TO FINANCIAL STATEMENTS, continued
JUNE 30, 2025**

NOTE 1 – SUMMARY OF SIGNIFICANT ACCOUNTING POLICIES (continued)

E. Basis of Accounting – Measurement Focus (continued)

Revenues – Exchange and Non-Exchange Transactions

Revenue resulting from exchange transactions, in which each party gives and receives essentially equal value, is recorded under the accrual basis when the exchange takes place. On a modified accrual basis, revenue is recorded in the fiscal year in which the resources are measurable and become available. “Available” means the resources will be collected within the current fiscal year or are expected to be collected soon enough thereafter to be used to pay liabilities of the current fiscal year. Generally, “available” means collectible within the current period or within 60 days after year-end. However, to achieve comparability of reporting among California school districts and so as not to distort normal revenue patterns, with specific respect to reimbursement grants and corrections to State-aid apportionments, the California Department of Education has defined available for school districts as collectible within one year.

Non-exchange transactions, in which the District receives value without directly giving equal value in return, include property taxes, grants, and entitlements. Under the accrual basis, revenue from property taxes is recognized in the fiscal year for which the taxes are levied. Revenue from the grants and entitlements is recognized in the fiscal year in which all eligibility requirements have been satisfied.

Eligibility requirements include timing requirements, which specify the year when the resources are to be used or the fiscal year when use is first permitted; matching requirements, in which the District must provide local resources to be used for a specific purpose; and expenditure requirements, in which the resources are provided to the District on a reimbursement basis. Under the modified accrual basis, revenue from non-exchange transactions must also be available before it can be recognized.

Unearned Revenue

Unearned revenue arises when potential revenue does not meet both the "measurable" and "available" criteria for recognition in the current period or when resources are received by the District prior to the incurrence of qualifying expenditures. In subsequent periods, when both revenue recognition criteria are met, or when the District has a legal claim to the resources, the liability for unearned revenue is removed from the balance sheet and revenue is recognized.

Certain grants received that have not met eligibility requirements are recorded as unearned revenue. On the governmental fund financial statements, receivables that will not be collected within the available period are also recorded as unearned revenue.

Expenses/Expenditures

On the accrual basis of accounting, expenses are recognized at the time a liability is incurred. On the modified accrual basis of accounting, expenditures are generally recognized in the accounting period in which the related fund liability is incurred, as under the accrual basis of accounting. However, under the modified accrual basis of accounting, debt service expenditures, as well as expenditures related to compensated absences and claims and judgments, are recorded only when payment is due. Allocations of cost, such as depreciation and amortization, are not recognized in the governmental funds. When both restricted and unrestricted resources are available for use, it is the District's policy to use restricted resources first, then unrestricted resources as they are needed.

**NEWPORT-MESA UNIFIED SCHOOL DISTRICT
 NOTES TO FINANCIAL STATEMENTS, continued
 JUNE 30, 2025**

NOTE 1 – SUMMARY OF SIGNIFICANT ACCOUNTING POLICIES (continued)

F. Assets, Deferred Outflows of Resources, Liabilities, Deferred Inflows of Resources, Fund Balance and Net Position

Cash and Cash Equivalents

The District’s cash and cash equivalents consist of cash on hand, demand deposits and short-term investments with original maturities of three months or less from the date of acquisition. Cash equivalents also include cash with county treasury balances for purposes of the statement of cash flows.

Investments

Investments with original maturities greater than one year are stated at fair value. Fair value is estimated based on quoted market prices at year-end. All investments not required to be reported at fair value are stated at cost or amortized cost. Fair values of investments in county and State investment pools are determined by the program sponsor.

Inventories

Inventories are recorded using the purchases method in that the cost is recorded as an expenditure at the time the individual inventory items are requisitioned. Inventories are valued at historical cost and consist of expendable supplies held for consumption.

Capital Assets

The accounting and reporting treatment applied to the capital assets associated with a fund is determined by its measurement focus. Capital assets are reported in the governmental activities column of the government-wide statement of net position but are not reported in the fund financial statements.

Capital assets are capitalized at cost (or estimated historical cost) and updated for additions and retirements during the year. Donated fixed assets are recorded at their acquisition value as of the date received. The District maintains a capitalization threshold of \$5,000. The District does not own any infrastructure as defined in GASB Statement No. 34. Improvements are capitalized; the costs of normal maintenance and repairs that do not add to the value of the asset or materially extend an asset’s life are not capitalized. All reported capital assets, except for land and construction in progress, are depreciated. Improvements are depreciated over the remaining useful lives of the related capital assets.

Depreciation is computed using the straight-line method over the following estimated useful lives:

<u>Asset Class</u>	<u>Estimated Useful Life</u>
Buildings	50 Years
Portable classrooms and structures	25 Years
Equipment	5 to 15 Years
Vehicles	15 Years

Interfund Balances

On fund financial statements, receivables and payables resulting from short-term interfund loans are classified as "Due from other funds/Due to other funds." These amounts are eliminated in the governmental activities columns of the statement of net position.

**NEWPORT-MESA UNIFIED SCHOOL DISTRICT
NOTES TO FINANCIAL STATEMENTS, continued
JUNE 30, 2025**

NOTE 1 – SUMMARY OF SIGNIFICANT ACCOUNTING POLICIES (continued)

F. Assets, Deferred Outflows of Resources, Liabilities, Deferred Inflows of Resources, Fund Balance and Net Position (continued)

Compensated Absences

In accordance with GASB Statement No. 101, *Compensated Absences*, accumulated unpaid employee vacation and sick leave benefits are accrued as a liability in the government-wide financial statements as the benefits are earned, provided they accumulate and are more likely than not to be used or paid. The measurement of this liability includes estimated salary amounts and the employer’s share of related taxes and benefits, as applicable, that are directly related to these compensated absences.

For governmental funds, the current portion of unpaid compensated absences is recognized upon the occurrence of relevant events such as employee resignations and retirements that occur prior to year-end that have not yet been paid with expendable available financial resources. These amounts are recorded in the fund from which the employees who have accumulated leave are paid. For accumulated sick leave benefits, a liability is recognized for the portion that employees have earned and that are more likely than not to be used or paid. The District’s policy for sick leave recognition aligns with this criterion, accruing the liability based on historical usage patterns and other relevant factors.

Accrued Liabilities and Long-Term Obligations

All payables, accrued liabilities, and long-term obligations are reported in the government-wide and proprietary fund financial statements. In general, governmental fund payables and accrued liabilities that, once incurred, are paid in a timely manner and in full from current financial resources are reported as obligations of the funds.

Postemployment Benefits Other Than Pensions (OPEB)

For purposes of measuring the total OPEB liability, deferred outflows of resources related to OPEB and deferred inflows of resources related to OPEB, and OPEB expense have been determined by an independent actuary. For this purpose, benefit payments are recognized when currently due and payable in accordance with the benefit terms.

Generally accepted accounting principles require the reported results must pertain to liability and asset information within certain defined timeframes. For this report, the following timeframes are used:

Valuation Date	June 30, 2025
Measurement Date	June 30, 2025
Measurement Period	July 1, 2024 – June 30, 2025

Gains and losses related to changes in total OPEB liability are recognized in OPEB expense systematically over time. The first amortized amounts are recognized in OPEB expense for the year the gain or loss occurs. The remaining amounts are categorized as deferred outflows and deferred inflows of resources related to OPEB and are to be recognized in future OPEB expense. The amortization period differs depending on the source of gain or loss. The difference between projected and actual earnings is amortized on a straight-line basis over five years. All other amounts are amortized on a straight-line basis over the average expected remaining service lives of all members that are provided with benefits (active, inactive, and retired) at the beginning of the measurement period.

**NEWPORT-MESA UNIFIED SCHOOL DISTRICT
NOTES TO FINANCIAL STATEMENTS, continued
JUNE 30, 2025**

NOTE 1 – SUMMARY OF SIGNIFICANT ACCOUNTING POLICIES (continued)

F. Assets, Deferred Outflows of Resources, Liabilities, Deferred Inflows of Resources, Fund Balance and Net Position (continued)

Premiums and Discounts

In the government-wide and proprietary fund financial statements, long-term obligations are reported as liabilities in the applicable governmental activities or proprietary fund statement of net position. Bond premiums and discounts are deferred and amortized over the life of the bonds using the straight-line method.

Deferred Outflows/Deferred Inflows of Resources

In addition to assets, the District will sometimes report a separate section for deferred outflows of resources. This separate financial statement element, deferred outflows of resources, represents a consumption of net position that applies to a future period and so will not be recognized as an outflow of resources (expense/expenditure) until then.

In addition to liabilities, the District will sometimes report a separate section for deferred inflows of resources. This separate financial statement element, deferred inflows of resources, represents an acquisition of net position that applies to a future period and so will not be recognized as an inflow of resources (revenue) until that time.

Pensions

For purposes of measuring the net pension liability, deferred outflows of resources and deferred inflows of resources related to pensions, and pension expense, information about the fiduciary net position of the defined benefit pension plans (the Plans) of the California State Teachers' Retirement System (CalSTRS) and the California Public Employees' Retirement System (CalPERS) and additions to/deductions from the Plans' fiduciary net position have been determined on the same basis as they are reported by the Plans. For this purpose, benefit payments (including refunds of employee contributions) are recognized when due and payable in accordance with the benefit terms. Investments are reported at fair value.

Fund Balance

Fund balance is divided into five classifications based primarily on the extent to which the District is bound to observe constraints imposed upon the use of the resources in the governmental funds. The classifications are as follows:

Nonspendable - The nonspendable fund balance classification reflects amounts that are not in spendable form. Examples include inventory, lease receivables (net of related deferred inflows), prepaid items, the long-term portion of loans receivable, and nonfinancial assets held for resale. This classification also reflects amounts that are in spendable form but that are legally or contractually required to remain intact, such as the principal of a permanent endowment.

Restricted - The restricted fund balance classification reflects amounts subject to externally imposed and legally enforceable constraints. Such constraints may be imposed by creditors, grantors, contributors, or laws or regulations of other governments, or may be imposed by law through constitutional provisions or enabling legislation.

NEWPORT-MESA UNIFIED SCHOOL DISTRICT
NOTES TO FINANCIAL STATEMENTS, continued
JUNE 30, 2025

NOTE 1 – SUMMARY OF SIGNIFICANT ACCOUNTING POLICIES (continued)

F. Assets, Deferred Outflows of Resources, Liabilities, Deferred Inflows of Resources, Fund Balance and Net Position (continued)

Fund Balance (continued)

Committed - The committed fund balance classification reflects amounts subject to internal constraints self-imposed by formal action of the Governing Board. The constraints giving rise to committed fund balance must be imposed no later than the end of the reporting period. The actual amounts may be determined subsequent to that date but prior to the issuance of the financial statements. In contrast to restricted fund balance, committed fund balance may be redirected by the government to other purposes as long as the original constraints are removed or modified in the same manner in which they were imposed, that is, by the same formal action of the Governing Board.

Assigned - The assigned fund balance classification reflects amounts that the government *intends* to be used for specific purposes. Assignments may be established either by the Governing Board or by a designee of the governing body and are subject to neither the restricted nor committed levels of constraint. In contrast to the constraints giving rise to committed fund balance, constraints giving rise to assigned fund balance are not required to be imposed, modified, or removed by formal action of the Governing Board. The action does not require the same level of formality and may be delegated to another body or official. Additionally, the assignment need not be made before the end of the reporting period, but rather may be made any time prior to the issuance of the financial statements.

Unassigned - In the General Fund only, the unassigned fund balance classification reflects the residual balance that has not been assigned to other funds and that is not restricted, committed, or assigned to specific purposes. However, deficits in any fund, including the General Fund that cannot be eliminated by reducing or eliminating amounts assigned to other purposes are reported as negative unassigned fund balance.

The District applies restricted resources first when expenditures are incurred for purposes for which either restricted or unrestricted (committed, assigned and unassigned) amounts are available. Similarly, within unrestricted fund balance, committed amounts are reduced first followed by assigned, and then unassigned amounts when expenditures are incurred for purposes for which amounts in any of the unrestricted fund balance classifications could be used.

G. Interfund Activity

Exchange transactions between funds are reported as revenues in the seller funds and as expenditures/expenses in the purchaser funds. Flows of cash or goods from one fund to another without a requirement for repayment are reported as interfund transfers. Interfund transfers are reported as other financing sources/uses in governmental funds and after non-operating revenues/expenses in proprietary funds. Repayments from funds responsible for particular expenditures/expenses to the funds that initially paid for them are not presented in the financial statements. Interfund transfers are eliminated in the governmental activities columns of the statement of activities.

H. Estimates

The preparation of the financial statements in conformity with accounting principles generally accepted in the United States of America requires management to make estimates and assumptions that affect the amounts reported in the financial statements and accompanying notes. Actual results may differ from those estimates.

NEWPORT-MESA UNIFIED SCHOOL DISTRICT
NOTES TO FINANCIAL STATEMENTS, continued
JUNE 30, 2025

NOTE 1 – SUMMARY OF SIGNIFICANT ACCOUNTING POLICIES (continued)

I. Budgetary Data

The budgetary process is prescribed by provisions of the California Education Code and requires the governing board to hold a public hearing and adopt an operating budget no later than July 1 of each year. The District governing board satisfied these requirements. The adopted budget is subject to amendment throughout the year to give consideration to unanticipated revenue and expenditures primarily resulting from events unknown at the time of budget adoption with the legal restriction that expenditures cannot exceed appropriations by major object account.

The amounts reported as the original budgeted amounts in the budgetary statements reflect the amounts when the original appropriations were adopted. The amounts reported as the final budgeted amounts in the budgetary statements reflect the amounts after all budget amendments have been accounted for. For purposes of the budget, on-behalf payments have not been included as revenue and expenditures as required under generally accepted accounting principles.

J. Property Tax

Secured property taxes attach as an enforceable lien on property as of January 1. Taxes are payable in two installments on November 1 and February 1 and become delinquent on December 10 and April 10, respectively. Unsecured property taxes are payable in one installment on or before August 31. The County Auditor-Controller bills and collects the taxes on behalf of the District. Local property tax revenues are recorded when received.

K. New Accounting Pronouncements

GASB Statement No. 101 – In June 2022, GASB issued Statement No. 101, *Compensated Absences*. The objective of this statement is to better meet the information needs of financial statement users by updating the recognition and measurement guidance for compensated absences. That objective is achieved by aligning the recognition and measurement guidance under a unified model and by amending certain previously required disclosures. This statement is effective for periods beginning after December 15, 2023. The District has implemented this Statement as of June 30, 2025.

GASB Statement No. 102 – In December 2023, GASB issued Statement No. 102, *Certain Risk Disclosures*. This Statement requires a government to assess whether a concentration or constraint makes the primary government reporting unit or other reporting units that report a liability for revenue debt vulnerable to the risk of a substantial impact. Additionally, this Statement requires a government to assess whether an event or events associated with a concentration or constraint that could cause the substantial impact have occurred, have begun to occur, or are more likely than not to begin to occur within 12 months of the date the financial statements are issued. This statement is effective for periods beginning after June 15, 2024. The District has implemented this Statement as of June 30, 2025.

GASB Statement No. 103 – In April 2024, GASB issued Statement No. 103, *Financial Reporting Model Improvements*. The objective of this Statement is to improve key components of the financial reporting model to enhance its effectiveness in providing information that is essential for decision making and assessing a government's accountability. This Statement also addresses certain application issues. The statement is effective for periods beginning after June 15, 2025. The District has not yet determined the impact on the financial statements.

**NEWPORT-MESA UNIFIED SCHOOL DISTRICT
 NOTES TO FINANCIAL STATEMENTS, continued
 JUNE 30, 2025**

NOTE 1 – SUMMARY OF SIGNIFICANT ACCOUNTING POLICIES (continued)

K. New Accounting Pronouncements (continued)

GASB Statement No. 104 – In September 2024, GASB issued Statement No. 104, *Disclosure of Certain Capital Assets*. The objective of this Statement is to provide users of government financial statements with essential information about certain types of capital assets. The statement is effective for periods beginning after June 15, 2025. The District has not yet determined the impact on the financial statements.

NOTE 2 – CASH AND INVESTMENTS

A. Summary of Cash and Investments

	Governmental Funds	Internal Service Fund	Governmental Activities	Fiduciary Funds
Investment in county treasury	\$ 274,379,068	\$ 11,755,660	\$ 286,134,728	\$ 432,454
Fair value adjustment	2,825,894	126,846	2,952,740	-
Cash on hand and in banks	11,019,231	398,337	11,417,568	-
Cash with fiscal agent	8,100,000	50,000	8,150,000	-
Cash in revolving fund	150,000	-	150,000	-
Total	\$ 296,474,193	\$ 12,330,843	\$ 308,805,036	\$ 432,454

B. Policies and Practices

The District is authorized under California Government Code to make direct investments in local agency bonds, notes, or warrants within the state; U.S. Treasury instruments; registered state warrants or treasury notes; securities of the U.S. Government, or its agencies; bankers acceptances; commercial paper; certificates of deposit placed with commercial banks and/or savings and loan companies; repurchase or reverse repurchase agreements; medium term corporate notes; shares of beneficial interest issued by diversified management companies, certificates of participation, obligations with first priority security; collateralized mortgage obligations; and the County Investment Pool.

Investment in County Treasury – The District maintains substantially all of its cash in the County Treasury in accordance with *Education Code Section 41001*. The Orange County Treasurer’s pooled investments are managed by the County Treasurer who reports on a monthly basis to the board of supervisors. In addition, the function of the County Treasury Oversight Committee is to review and monitor the County’s investment policy. The committee membership includes the Treasurer and Tax Collector, the Auditor-Controller, Chief Administrative Officer, Superintendent of Schools Representative, and a public member. The fair value of the District’s investment in the pool is based upon the District’s pro-rata share of the fair value provided by the County Treasurer for the entire portfolio (in relation to the amortized cost of that portfolio). The balance available for withdrawal is based on the accounting records maintained by the County Treasurer, which is recorded on the amortized cost basis.

**NEWPORT-MESA UNIFIED SCHOOL DISTRICT
NOTES TO FINANCIAL STATEMENTS, continued
JUNE 30, 2025**

NOTE 2 – CASH AND INVESTMENTS (continued)

C. General Authorizations

Except for investments by trustees of debt proceeds, the authority to invest District funds deposited with the county treasury is delegated to the County Treasurer and Tax Collector. Additional information about the investment policy of the County Treasurer and Tax Collector may be obtained from its website. The table below identifies the investment types permitted by California Government Code.

Authorized Investment Type	Maximum Remaining Maturity	Maximum Percentage of Portfolio	Maximum Investment in One Issuer
Local Agency Bonds, Notes, Warrants	5 years	None	None
Registered State Bonds, Notes, Warrants	5 years	None	None
U. S. Treasury Obligations	5 years	None	None
U. S. Agency Securities	5 years	None	None
Banker’s Acceptance	180 days	40%	30%
Commercial Paper	270 days	25%	10%
Negotiable Certificates of Deposit	5 years	30%	None
Repurchase Agreements	1 year	None	None
Reverse Repurchase Agreements	92 days	20% of base	None
Medium-Term Corporate Notes	5 years	30%	None
Mutual Funds	N/A	20%	10%
Money Market Mutual Funds	N/A	20%	10%
Mortgage Pass-Through Securities	5 years	20%	None
County Pooled Investment Funds	N/A	None	None
Local Agency Investment Fund (LAIF)	N/A	None	None
Joint Powers Authority Pools	N/A	None	None

D. Interest Rate Risk

Interest rate risk is the risk that changes in market interest rates will adversely affect the fair value of an investment. Generally, the longer the maturity of an investment, the greater the sensitivity of its fair value to changes in market interest rates. The District manages its exposure to interest rate risk by investing in the County Treasury. The District maintains a pooled investment with the County Treasury with a fair value of approximately \$289,519,922. The average weighted maturity for this pool is 273 days.

E. Credit Risk

Credit risk is the risk that an issuer of an investment will not fulfill its obligation to the holder of the investment. This is measured by the assignment of a rating by a nationally recognized statistical rating organization. The investments in the County Treasury are not required to be rated.

**NEWPORT-MESA UNIFIED SCHOOL DISTRICT
 NOTES TO FINANCIAL STATEMENTS, continued
 JUNE 30, 2025**

NOTE 2 – CASH AND INVESTMENTS (continued)

F. Custodial Credit Risk – Deposits

This is the risk that in the event of a bank failure, the District's deposits may not be returned to it. The District does not have a policy for custodial credit risk for deposits. However, the California Government Code requires that a financial institution secure deposits made by state or local governmental units by pledging securities in an undivided collateral pool held by a depository regulated under state law. The market value of the pledged securities in the collateral pool must equal at least 110 percent of the total amount deposited by the public agencies. California law also allows financial institutions to secure public deposits by pledging first trust deed mortgage notes having a value of 150 percent of the secured public deposits and letters of credit issued by the Federal Home Loan Bank of San Francisco having a value of 105 percent of the secured deposits. As of June 30, 2025, the District's bank balance of \$11,449,997 was exposed to custodial credit risk.

G. Fair Value

The District categorizes the fair value measurements of its investments based on the hierarchy established by generally accepted accounting principles. The fair value hierarchy is based on the valuation inputs used to measure an asset's fair value. The following provides a summary of the hierarchy used to measure fair value:

Level 1 - Quoted prices (unadjusted) in active markets for identical assets.

Level 2 - Observable inputs other than Level 1 prices such as quoted prices for similar assets in active markets, quoted prices for identical or similar assets in markets that are not active, or other inputs that are observable, either directly or indirectly.

Level 3 - Unobservable inputs should be developed using the best information available under the circumstances, which might include the District's own data. The District should adjust that data if reasonable available information indicates that other market participants would use different data or certain circumstances specific to the District are not available to other market participants.

Uncategorized - Investments in the Orange County Treasury Investment Pool are not measured using the input levels above because the District's transactions are based on a stable net asset value per share. All contributions and redemptions are transacted at \$1.00 net asset value per share.

The District's fair value measurements at June 30, 2025 were as follows:

	<u>Uncategorized</u>
Investment in county treasury	<u>\$ 289,519,922</u>
Total	<u>\$ 289,519,922</u>

**NEWPORT-MESA UNIFIED SCHOOL DISTRICT
NOTES TO FINANCIAL STATEMENTS, continued
JUNE 30, 2025**

NOTE 3 – ACCOUNTS RECEIVABLE

Accounts receivable at June 30, 2025 consisted of the following:

	General Fund	Special Reserve Fund for Capital Outlay Projects	Non-Major Governmental Funds	Internal Service Fund	Governmental Activities
Federal Government					
Categorical aid	\$ 5,730,573	\$ -	\$ 1,228,322	\$ -	\$ 6,958,895
State Government					
Apportionment	687,125	-	-	-	687,125
Categorical aid	4,544,275	-	1,919,797	-	6,464,072
Lottery	408,987	-	-	-	408,987
Local Government					
Other local sources	2,448,886	585,518	810,191	40,141	3,884,736
Total	\$ 13,819,846	\$ 585,518	\$ 3,958,310	\$ 40,141	\$ 18,403,815

NOTE 4 – CAPITAL ASSETS

Capital asset activity for the year ended June 30, 2025 was as follows:

	Balance July 01, 2024	Additions	Deletions	Balance June 30, 2025
Governmental Activities				
Capital assets not being depreciated				
Land	\$ 21,548,963	\$ -	\$ -	\$ 21,548,963
Construction in progress	68,958,308	115,914,518	27,305,217	157,567,609
Total capital assets not being depreciated	90,507,271	115,914,518	27,305,217	179,116,572
Capital assets being depreciated				
Land improvements	100,689,528	7,284,974	-	107,974,502
Buildings & improvements	511,664,474	17,731,958	-	529,396,432
Furniture & equipment	35,531,153	2,288,285	1,621,804	36,197,634
Total capital assets being depreciated	647,885,155	27,305,217	1,621,804	673,568,568
Less: Accumulated depreciation				
Land improvements	43,607,850	6,393,036	-	50,000,886
Buildings & improvements	340,640,273	17,388,786	-	358,029,059
Furniture & equipment	21,915,805	1,813,606	1,621,804	22,107,607
Total accumulated depreciation	406,163,928	25,595,428	1,621,804	430,137,552
Total capital assets being depreciated, net	241,721,227	1,709,789	-	243,431,016
Governmental Activities				
Capital Assets, net	\$ 332,228,498	\$ 117,624,307	\$ 27,305,217	\$ 422,547,588

**NEWPORT-MESA UNIFIED SCHOOL DISTRICT
NOTES TO FINANCIAL STATEMENTS, continued
JUNE 30, 2025**

NOTE 5 – INTERFUND TRANSACTIONS

A. Interfund Receivables/Payables (Due From/Due To)

Individual interfund receivable and payable balances at June 30, 2025 were as follows:

<u>Due To Other Funds</u>	<u>Due From Other Funds</u>			
	<u>General Fund</u>	<u>Special Reserve Fund for Capital Outlay Projects</u>	<u>Non-Major Governmental Funds</u>	<u>Total</u>
General Fund	\$ -	\$ 9,880,256	\$ 904,607	\$ 10,784,863
Non-Major Governmental Funds	4,844,168	2,200,896	-	7,045,064
Internal Service Fund	2,196	-	-	2,196
Total	\$ 4,846,364	\$ 12,081,152	\$ 904,607	\$ 17,832,123

The General Fund owed the Special Reserve Fund for Capital Outlay Projects for current and future construction commitments.	\$ 9,880,256
The General Fund owed the Non-Major Child Development Fund for program revenues.	168,490
The General Fund owed the Non-Major Cafeteria Fund for catering.	736,117
The Non-Major Child Development Fund owed the General Fund for indirect costs and health and welfare.	179,898
The Non-Major Cafeteria Fund owed the General Fund for indirect costs, health and welfare and temporary borrowing.	4,189,270
The Non-Major Building Fund owed the General Fund for expenditures incurred.	475,000
The Non-Major Building Fund owed the Special Reserve Fund for Capital Outlay Projects for expenditures incurred.	2,200,896
The Internal Service Fund owed the General Fund for health and welfare.	2,196
Total	\$ 17,832,123

B. Operating Transfers

Interfund transfers for the year ended June 30, 2025 consisted of the following:

<u>Interfund Transfers Out</u>	<u>Interfund Transfers In</u>			
	<u>General Fund</u>	<u>Special Reserve Fund for Capital Outlay Projects</u>	<u>Non-Major Governmental Funds</u>	<u>Total</u>
General Fund	\$ -	\$ 10,475,000	\$ 868,103	\$ 11,343,103
Non-Major Governmental Funds	10,475,000	38,690,390	-	49,165,390
Total	\$ 10,475,000	\$ 49,165,390	\$ 868,103	\$ 60,508,493

The General Fund transferred to the Special Reserve Fund for Capital Outlay Projects for expenditures incurred.	\$ 10,475,000
The General Fund transferred to the Non-Major Child Development Fund for payment to OCDE.	168,103
The General Fund transferred to the Non-Major Cafeteria Fund for program support.	700,000
The Non-Major County School Facilities Fund transferred to the General Fund for construction commitments.	10,475,000
The Non-Major County School Facilities Fund transferred to the Special Reserve Fund for Capital Outlay Projects for construction commitments.	38,690,390
Total	\$ 60,508,493

**NEWPORT-MESA UNIFIED SCHOOL DISTRICT
NOTES TO FINANCIAL STATEMENTS, continued
JUNE 30, 2025**

NOTE 6 – ACCRUED LIABILITIES

Accrued liabilities at June 30, 2025 consisted of the following:

	General Fund	Special Reserve Fund for Capital Outlay Projects	Non-Major Governmental Funds	Internal Service Fund	District-Wide	Governmental Activities
Payroll	\$ 13,711,405	\$ -	\$ 771,304	\$ 128,710	\$ -	\$ 14,611,419
Construction	-	35,616,503	966,189	-	-	36,582,692
Vendors payable	22,587,309	-	490,392	-	-	23,077,701
Unmatured interest	-	-	-	-	973,208	973,208
Total	\$ 36,298,714	\$ 35,616,503	\$ 2,227,885	\$ 128,710	\$ 973,208	\$ 75,245,020

NOTE 7 – UNEARNED REVENUE

Unearned revenue at June 30, 2025 consisted of the following:

	General Fund	Non-Major Governmental Funds	Governmental Activities
Federal sources	\$ 330,346	\$ 92,596	\$ 422,942
State categorical sources	1,172,183	2,539,543	3,711,726
Local sources	180,455	-	180,455
Total	\$ 1,682,984	\$ 2,632,139	\$ 4,315,123

NOTE 8 – LONG-TERM LIABILITIES

A schedule of changes in long-term liabilities for the year ended June 30, 2025 consisted of the following:

	Restated Balance July 01, 2024	Additions	Deductions	Balance June 30, 2025	Balance Due In One Year
Governmental Activities					
General obligation bonds	\$ 340,876,954	\$ 13,433,699	\$ 12,785,000	\$ 341,525,653	\$ 10,206,195
Unamortized premium	5,356,599	-	997,952	4,358,647	997,952
Total general obligation bonds	346,233,553	13,433,699	13,782,952	345,884,300	11,204,147
Financed purchases	7,464	-	7,464	-	-
Compensated absences*	14,669,241	5,248,808	-	19,918,049	7,489,122
Net OPEB liability	133,894,436	-	41,791,689	92,102,747	-
Net pension liability	321,767,248	-	28,622,631	293,144,617	-
Total	\$ 816,571,942	\$ 18,682,507	\$ 84,204,736	\$ 751,049,713	\$ 18,693,269

*The change in the compensated absences liability is presented as a net change.

- Payments for general obligation bonds are made in the Bond Interest and Redemption Fund.
- Payments for financed purchases are made in the General Fund.

**NEWPORT-MESA UNIFIED SCHOOL DISTRICT
NOTES TO FINANCIAL STATEMENTS, continued
JUNE 30, 2025**

NOTE 8 – LONG-TERM LIABILITIES (continued)

A. General Obligation Bonds

The outstanding general obligation bonded debt is as follows:

Series	Issue Date	Maturity Date	Interest Rate	Original Issue	Bonds			Bonds Outstanding June 30, 2025
					Outstanding July 01, 2024	Additions	Deductions	
Election 2005, Series 2007	January 1, 2007	August 1, 2031	3.30% - 4.50%	\$ 70,443,480	\$ 64,545,122	\$ 2,779,233	\$ 5,795,000	\$ 61,529,355
Election 2005, Series 2011	June 8, 2011	August 1, 2046	3.60% - 7.30%	95,000,670	133,818,255	7,398,726	410,000	140,806,981
Refunding Series 2017	August 10, 2017	August 1, 2046	3.90% - 5.00%	80,564,666	98,813,577	3,255,740	-	102,069,317
Election 2005, Series 2017	August 10, 2017	August 1, 2039	2.00% - 5.00%	28,130,000	27,240,000	-	170,000	27,070,000
Election 2005, Series 2020	May 5, 2020	August 1, 2026	5.00%	32,960,000	16,460,000	-	6,410,000	10,050,000
					\$ 340,876,954	\$ 13,433,699	\$ 12,785,000	\$ 341,525,653

2005 General Obligation Bonds, Series 2007

In January 2007, the District issued \$70,443,480 of the Newport-Mesa Unified School District, 2005 General Obligation Bonds, Series 2007. The bonds issued included \$27,900,000 of current interest bonds and \$42,543,480 of capital appreciation bonds, with the capital appreciation bonds accreting to \$102,915,000. The bonds have a final maturity to occur on August 1, 2031, with interest yields of 3.3 to 4.5%. Proceeds from the sale of the bonds were used to finance specific construction and renovation projects approved by the voters and to pay costs of issuance on the bonds. At June 30, 2025, the principal balance outstanding was \$61,529,355. Unamortized premium on issuance at June 30, 2025 was \$171,290.

2005 General Obligation Bonds, Series 2011

In June 2011, the District issued \$95,000,670 of the Newport-Mesa Unified School District, 2005 General Obligation Bonds, Series 2011. The bonds issued included \$11,928,966 of convertible bonds and \$83,071,704 of capital appreciation bonds. The bonds have final maturity dates through August 1, 2046, with interest rates ranging from 3.6 to 7.3%. The conversion value for the convertible bonds is \$22,385,000 and total accretion on the capital appreciation bonds is \$537,190,398. Proceeds from the sale of the bonds will be used to finance specific construction and renovation projects approved by the voters and to pay costs of issuance on the bonds. At June 30, 2025, the principal balance outstanding was \$140,806,981. Unamortized premium at June 30, 2025 was \$355,147.

2005 General Obligation Refunding Bonds, Series 2017

In August 2017, the District issued \$80,564,666 of the Newport-Mesa Unified School District, 2005 General Obligation Refunding Bonds, Series 2017. The bonds issued included \$17,580,000 of current interest bonds and \$62,984,666 of capital appreciation bonds, with capital appreciation bonds accreting to \$171,355,000. The bonds have a final maturity to occur on August 1, 2046, with interest rates ranging from 3.9 to 5.0%. Proceeds from sale of bonds will be used to refund a portion of the outstanding General Obligation Bonds, Election of 2005, Series 2011 and to refund all of the outstanding General Obligation Refunding Bonds, Election of 2000, Series 2012, and to pay costs of issuance of the Refunding Bonds. At June 30, 2025, the principal balance outstanding of the General Obligation Refunding Bonds, Series 2017 was \$102,069,317 and unamortized premium on issuance and deferred charge on refunding were \$2,106,290 and \$6,499,341, respectively.

**NEWPORT-MESA UNIFIED SCHOOL DISTRICT
NOTES TO FINANCIAL STATEMENTS, continued
JUNE 30, 2025**

NOTE 8 – LONG-TERM LIABILITIES (continued)

A. General Obligation Bonds (continued)

2005 General Obligation Bonds, Series 2017

In August 2017, the District issued \$28,130,000 of the Newport-Mesa Unified School District, 2005 General Obligation Bonds, Series 2017. The bonds were issued as current interest bonds. The bonds have a final maturity date of August 1, 2039, with interest rates ranging from 2.0 to 5.0%. Proceeds from sale of bonds will be used to finance specific construction, repair, and improvement projects approved by the voter of the District held on November 8, 2005. At June 30, 2025, the principal balance outstanding of the 2005 General Obligation Bonds, Series 2017 was \$27,070,000 and unamortized premium on issuance was \$1,014,756.

2000 General Obligation Refunding Bonds, Series 2020

In May 2020, the District issued \$32,960,000 of the Newport-Mesa Unified School District, 2000 General Obligation Refunding Bonds, Series 2020. The bonds were issued as current interest bonds. The bonds have a final maturity to occur on August 1, 2026, with an interest rate of 5.0%. Proceeds from sale of bonds were used to refund, on a current basis, a portion of the outstanding General Obligation Refunding Bonds, Election of 2000, Series 2010, and to pay costs of issuance of the Refunding Bonds. At June 30, 2025, the principal balance outstanding of the General Obligation Refunding Bonds, Series 2020 was \$10,050,000 and unamortized premium on issuance was \$711,164.

The general obligation bonds mature through 2047 as follows:

<u>Year Ended June 30,</u>	<u>Principal</u>	<u>Interest</u>	<u>Total</u>
2026	\$ 10,206,195	\$ 6,037,005	\$ 16,243,200
2027	11,363,905	6,142,545	17,506,450
2028	11,988,751	6,820,449	18,809,200
2029	13,412,255	6,510,695	19,922,950
2030	7,785,593	13,594,982	21,380,575
2031 - 2035	37,163,460	90,551,640	127,715,100
2036 - 2040	53,278,229	132,932,646	186,210,875
2041 - 2045	40,532,522	68,142,478	108,675,000
2046 - 2047	13,851,357	28,773,643	42,625,000
Accretion	141,943,386	(141,943,386)	-
Total	\$ 341,525,653	\$ 217,562,697	\$ 559,088,350

Debt service payments are made from property tax levy authorized by the voters.

**NEWPORT-MESA UNIFIED SCHOOL DISTRICT
NOTES TO FINANCIAL STATEMENTS, continued
JUNE 30, 2025**

NOTE 8 – LONG-TERM LIABILITIES (continued)

B. Financed Purchases

The District has entered into an agreement to finance equipment. The agreement is, in substance, a purchase, and is reported as a finance purchase agreement obligation. By June 30, 2025, the agreement was paid in full.

C. Compensated Absences

The restated beginning total unpaid employee compensated absences was \$14,669,241 and increased by a net amount of \$5,248,808 during the year ended June 30, 2025. The ending compensated absences at June 30, 2025 amounted to \$19,918,049. This amount is included as part of long-term liabilities in the government-wide financial statements.

D. Other Postemployment Benefits

The District's restated beginning total OPEB liability was \$133,894,436 and decreased by \$41,791,689 during the year ended June 30, 2025. The ending total OPEB liability at June 30, 2025 was \$92,102,747. See Note 10 for additional information regarding the total OPEB liability.

E. Net Pension Liability

The District's beginning net pension liability was \$321,767,248 and decreased by \$28,622,631 during the year ended June 30, 2025. The ending net pension liability at June 30, 2025 was \$293,144,617. See Note 11 for additional information regarding the net pension liability.

**NEWPORT-MESA UNIFIED SCHOOL DISTRICT
NOTES TO FINANCIAL STATEMENTS, continued
JUNE 30, 2025**

NOTE 9 – FUND BALANCES

Fund balances were composed of the following elements at June 30, 2025:

	General Fund	Special Reserve Fund for Capital Outlay Projects	Non-Major Governmental Funds	Total Governmental Funds
Nonspendable				
Revolving cash	\$ 150,000	\$ -	\$ -	\$ 150,000
Stores inventory	82,866	-	172,478	255,344
Prepaid expenditures	308,989	-	-	308,989
Total nonspendable	<u>541,855</u>	<u>-</u>	<u>172,478</u>	<u>714,333</u>
Restricted				
Educational programs	21,665,271	-	2,816,779	24,482,050
Food service	-	-	43,740	43,740
Associated student body	-	-	1,937,668	1,937,668
Capital projects	-	-	3,479,833	3,479,833
Debt service	-	-	16,910,325	16,910,325
Total restricted	<u>21,665,271</u>	<u>-</u>	<u>25,188,345</u>	<u>46,853,616</u>
Assigned				
Postemployment benefits	18,425,733	-	-	18,425,733
Capital projects	-	62,049,612	-	62,049,612
Other assignments	53,963,341	-	-	53,963,341
Total assigned	<u>72,389,074</u>	<u>62,049,612</u>	<u>-</u>	<u>134,438,686</u>
Unassigned	54,939,537	-	-	54,939,537
Total	<u>\$ 149,535,737</u>	<u>\$ 62,049,612</u>	<u>\$ 25,360,823</u>	<u>\$ 236,946,172</u>

The District is committed to maintaining a prudent level of financial resources to protect against the need to reduce service levels because of temporary revenue shortfalls or unpredicted expenditures. The District's Minimum Fund Balance Policy requires a Reserve for Economic Uncertainties, consisting of unassigned amounts, equal to no less than three percent of General Fund expenditures and other financing uses.

**NEWPORT-MESA UNIFIED SCHOOL DISTRICT
 NOTES TO FINANCIAL STATEMENTS, continued
 JUNE 30, 2025**

NOTE 10 – POSTEMPLOYMENT BENEFITS OTHER THAN PENSIONS (OPEB)

The Newport-Mesa Unified School District provides a single employer defined benefit other postemployment benefit (OPEB) plan as described below. Additionally, the California State Teachers' Retirement System (CalSTRS) administers a cost-sharing multiple-employer OPEB plan, the Medicare Premium Payment (MPP) Program, as described below. The District reported its total OPEB liability and its' proportionate share of the total OPEB liabilities related to the MPP Program, OPEB expense, deferred outflow of resources, and deferred inflow of resources for each of the above plans as follows:

	Total OPEB liability	Deferred outflows related to OPEB	Deferred inflows related to OPEB	OPEB expense
District OPEB Plan	\$ 91,134,792	\$ 9,063,025	\$ 54,772,464	\$ 7,152,122
MPP Program	967,955	-	-	204,293
Total	\$ 92,102,747	\$ 9,063,025	\$ 54,772,464	\$ 7,356,415

1. District OPEB Plan

A. Plan Description

The Newport-Mesa Unified School District's defined benefit OPEB plan, Newport-Mesa Unified School District Retiree Benefit Plan (the Plan) is described below. The Plan is a single-employer defined benefit plan administered by the District. No assets are accumulated in a trust that meets the criteria in paragraph 4 of GASB Statement 75.

B. OPEB Plan Fiduciary Net Position

Detailed information about the Plan's fiduciary net position is available in the separately-issued the Plan Annual Financial Report that includes financial statements and required supplementary information. That report may be obtained by contacting the District.

C. Benefits Provided

The eligibility requirements and benefits provided by the Plan are described below.

Benefit types provided	Medical, dental, vision, and life
Duration of Benefits	To age 65
Required Service	10 years
Minimum Age	55*
Dependent Coverage	Yes
District Contribution %	100%
District Cap	Same as active

*50 with 30 years of service. Classified employees with a minimum of ten years of service that are not consecutive years of service have a minimum age of 62.

**NEWPORT-MESA UNIFIED SCHOOL DISTRICT
 NOTES TO FINANCIAL STATEMENTS, continued
 JUNE 30, 2025**

NOTE 10 – POSTEMPLOYMENT BENEFITS OTHER THAN PENSIONS (OPEB)

1. District OPEB Plan (continued)

D. Contributions

For the measurement period, the District contributed \$9,174,860 to the Plan, \$5,174,860 of which was used for current premiums. There is no actuarially determined contribution, nor any contribution requirement established by statute or contract. The District’s contribution is currently based on a projected pay as-you-go funding method, that is, benefits are payable when due.

E. Plan Membership

Membership of the Plan consisted of the following:

	<u>Number of participants</u>
Inactive employees receiving benefits	191
Inactive employees entitled to but not receiving benefits*	-
Participating active employees	<u>2,478</u>
Total number of participants**	<u>2,669</u>

*Information not provided

**As of the June 30, 2025 valuation date

**NEWPORT-MESA UNIFIED SCHOOL DISTRICT
NOTES TO FINANCIAL STATEMENTS, continued
JUNE 30, 2025**

NOTE 10 – POSTEMPLOYMENT BENEFITS OTHER THAN PENSIONS (OPEB) (continued)

1. District OPEB Plan (continued)

F. Net OPEB Liability

The components of the net OPEB liability of the District at June 30, 2025, were as follows:

Total OPEB liability	\$ 100,525,382
Plan fiduciary net position	<u>(9,390,590)</u>
District's net OPEB liability	<u>\$ 91,134,792</u>

Plan fiduciary net position as a percentage of total OPEB liability	9.34%
---	-------

G. Investments

Investment Policy

The District is authorized under California Government Code to make direct investments in local agency bonds, notes, or warrants within the state; U.S. Treasury instruments; registered state warrants or treasury notes; securities of the U.S. Government, or its agencies; bankers acceptances; commercial paper; certificates of deposit placed with commercial banks and/or savings and loan companies; repurchase or reverse repurchase agreements; medium term corporate notes; shares of beneficial interest issued by diversified management companies, certificates of participation, obligations with first priority security; collateralized mortgage obligations; and the County Investment Pool.

Assumed Asset Allocation

The Plan's assumed asset allocation and assumed rate of return is as follows:

<u>Asset Class</u>	<u>Percentage of Portfolio</u>	<u>Assumed Gross Return</u>
All US Domestic Stock	60.00%	7.25%
Long-term Corporate Bonds	40.00%	4.25%

Rate of Return

For the year ended, June 30, 2025, the annual money-weighted rate of return on investments, net of investment expense, was 6.00 percent. The money-weighted rate of return expresses investment performance, net of investment expense, adjusted for the changing amounts actually invested.

**NEWPORT-MESA UNIFIED SCHOOL DISTRICT
NOTES TO FINANCIAL STATEMENTS, continued
JUNE 30, 2025**

NOTE 10 – POSTEMPLOYMENT BENEFITS OTHER THAN PENSIONS (OPEB) (continued)

1. District OPEB Plan (continued)

H. Actuarial Assumptions and Other Inputs

The total OPEB liability as of June 30, 2025 was determined by an actuarial valuation as of June 30, 2025 using the following actuarial assumptions and other inputs, applied to all periods included in the measurement.

Economic assumptions:

Salary increases	2.75%
Discount rate	5.78%
Healthcare cost trend rates	4.00%

Non-economic assumptions:

Mortality:

CalSTRS mortality rates are from the 2020 experience study and the CalPERS mortality rates are from the 2021 experience study.

Retirement rates:

CalSTRS retirement rates are from the 2020 experience study and the CalPERS retirement rates are from the 2021 experience study.

The actuarial assumptions used in the June 30, 2025 valuation were based on a review of plan experience. The discount rate was developed using 20 year municipal bond yield. The S&P Municipal Bond 20 Year High Grade Rate Index was used for this purpose.

**NEWPORT-MESA UNIFIED SCHOOL DISTRICT
NOTES TO FINANCIAL STATEMENTS, continued
JUNE 30, 2025**

NOTE 10 – POSTEMPLOYMENT BENEFITS OTHER THAN PENSIONS (OPEB) (continued)

1. District OPEB Plan (continued)

I. Changes in Total OPEB Liability

	<u>June 30, 2025</u>
Total OPEB Liability	
Service cost	\$ 6,424,615
Interest on total OPEB liability	5,824,019
Difference between expected and actual experience	(6,752,533)
Changes of assumptions	(37,508,731)
Benefits payments	<u>(5,174,860)</u>
Net change in total OPEB liability	(37,187,490)
Total OPEB liability - beginning	<u>137,712,872</u>
Total OPEB liability - ending (a)	<u>\$ 100,525,382</u>
 Plan fiduciary net position	
Contributions - employer	\$ 9,174,860
Net investment income	830,809
Benefit payments	(5,174,860)
Administrative expenses	<u>(22,317)</u>
Net change in plan fiduciary net position	4,808,492
Plan fiduciary net position - beginning	<u>4,582,098</u>
Plan fiduciary net position - ending (b)	<u>\$ 9,390,590</u>
 District's net OPEB liability - ending (a) - (b)	<u>\$ 91,134,792</u>
 Plan fiduciary net position as a percentage of the total OPEB liability	 9.34%
 Covered-employee payroll	 N/A*
 District's net OPEB liability (asset) as a percentage of covered-employee payroll	 N/A*

*The OPEB Plan contributions are not based on a measure of pay, therefore, covered-employee payroll is not presented.

**NEWPORT-MESA UNIFIED SCHOOL DISTRICT
 NOTES TO FINANCIAL STATEMENTS, continued
 JUNE 30, 2025**

NOTE 10 – POSTEMPLOYMENT BENEFITS OTHER THAN PENSIONS (OPEB) (continued)

1. District OPEB Plan (continued)

J. Sensitivity of the Total OPEB Liability to Changes in the Discount Rate

The following presents the total OPEB liability of the Newport-Mesa Unified School District, as well as what the District’s total OPEB liability would be if it were calculated using a discount rate that is one percentage point lower or one percentage point higher than the current discount rate:

	1% Decrease	Valuation Discount Rate	1% Increase
	(4.78%)	(5.78%)	(6.78%)
Net OPEB liability	\$ 98,388,596	\$ 91,134,792	\$ 84,357,867

K. Sensitivity of the Total OPEB Liability to Changes in the Healthcare Cost Trend Rate

The following presents the total OPEB liability of the Newport-Mesa Unified School District, as well as what the District’s total OPEB liability would be if it were calculated using a healthcare cost trend rate that is one percentage point lower or one percentage point higher than the current healthcare cost trend rate:

	1% Decrease	Healthcare Cost Trend Rate	1% Increase
	(3.00%)	(4.00%)	(5.00%)
Net OPEB liability	\$ 81,330,379	\$ 91,134,792	\$ 102,501,970

**NEWPORT-MESA UNIFIED SCHOOL DISTRICT
NOTES TO FINANCIAL STATEMENTS, continued
JUNE 30, 2025**

NOTE 10 – POSTEMPLOYMENT BENEFITS OTHER THAN PENSIONS (OPEB) (continued)

1. District OPEB Plan (continued)

L. OPEB Expense and Deferred Outflows and Deferred Inflows of Resources Related to OPEB

For the year ended June 30, 2025, the Newport-Mesa Unified School District recognized OPEB expense of \$7,152,122. At June 30, 2025, the Newport-Mesa Unified School District reported deferred outflows of resources related to OPEB and deferred inflows of resources related to OPEB from the following sources:

	<u>Deferred Outflows of Resources</u>	<u>Deferred Inflows of Resources</u>
Differences between projected and actual earnings on plan investments	\$ -	\$ 563,441
Differences between expected and actual experience	1,948,804	11,390,822
Changes in assumptions	7,114,221	42,818,201
Total	<u>\$ 9,063,025</u>	<u>\$ 54,772,464</u>

The amounts reported as deferred outflows of resources and deferred inflows of resources related to OPEB will be recognized in OPEB expense as follows:

<u>Year Ended June 30,</u>	<u>Deferred Outflows of Resources</u>	<u>Deferred Inflows of Resources</u>
2026	\$ 1,887,938	\$ 6,811,937
2027	1,683,370	6,811,937
2028	1,517,800	6,080,946
2029	1,481,868	5,693,972
2030	1,014,418	5,384,746
Thereafter	1,477,631	23,988,926
Total	<u>\$ 9,063,025</u>	<u>\$ 54,772,464</u>

**NEWPORT-MESA UNIFIED SCHOOL DISTRICT
 NOTES TO FINANCIAL STATEMENTS, continued
 JUNE 30, 2025**

NOTE 10 – POSTEMPLOYMENT BENEFITS OTHER THAN PENSIONS (OPEB) (continued)

2. MPP Program

A. Plan Description and Contribution Information

The California State Teachers’ Retirement System (CalSTRS) administers a hybrid retirement system consisting of a defined benefit plan, two defined contribution plans, a postemployment benefit plan and a fund used to account for ancillary activities associated with various deferred compensation plans and programs. The postemployment benefit plan component is the Medicare Premium Payment (MPP) Program. The MPP Program is a cost-sharing multiple-employer other postemployment benefit plan (OPEB) established pursuant to Chapter 1032, Statutes 2000 (SB 1435). CalSTRS administers the MPP Program through the Teachers’ Health Benefits Fund (THBF). The MPP Program pays Medicare Part A premiums and Medicare Parts A and B late enrollment surcharges for eligible members of the STRP DB Program who were retired or began receiving a disability allowance prior to July 1, 2012 and were not eligible for premium free Medicare Part A.

As of June 30, 2024, 4,121 retirees participated in the MPP Program. The number of retired members who will participate in the program in the future is unknown as eligibility cannot be predetermined. The MPP Program is funded on a pay-as-you-go basis from a portion of monthly employer contributions. In accordance with California Education Code section 22950, contributions that would otherwise be credited to the DB Program each month are instead credited to the MPP Program to fund monthly program and administrative costs. Total redirections to the MPP Program are monitored to ensure that total incurred costs do not exceed the amount initially identified as the cost of the program.

The parameters for employer contribution rates are set by the California Legislature and the Governor and detailed in the Teachers’ Retirement Law. Current contribution rates were established with the enactment of AB 1469 in 2014 (the CalSTRS Funding Plan).

B. Net OPEB Liability

The District’s net MPP Program OPEB liability of \$967,955 was measured as of June 30, 2024 by applying update procedures to an actuarial valuation as of June 30, 2023 and rolling forward the total OPEB liability to June 30, 2024. The District’s proportion of the net OPEB liability was based on a projection of the District’s long-term share of contributions to the MPP Program relative to the projected contributions of all participating school districts, actuarially determined. At June 30, 2025, the District’s proportion was 0.272 percent.

C. Actuarial Assumptions and Other Inputs

The June 30, 2025 net OPEB liability was determined by applying update procedures to the financial reporting actuarial valuation as of June 30, 2023, and rolling forward the total OPEB liability to June 30, 2024 using the assumptions listed in the following table:

Measurement Date	June 30, 2024
Valuation Date	June 30, 2023
Experience Study	July 1, 2017 through June 30, 2022
Actuarial Cost Method	Entry age normal
Discount rate	3.93%
Medicare Part A Premium Costs Trend Rate ¹	5.00%
Medicare Part B Premium Costs Trend Rate ¹	6.50%

¹ Trend rates indicate medical inflation in the specific year and therefore affect the premiums for the following year. For example, the projected 2024-2025 premium is the 2023-2024 premium increased by the assumed 2023-2024 trend rate.

**NEWPORT-MESA UNIFIED SCHOOL DISTRICT
 NOTES TO FINANCIAL STATEMENTS, continued
 JUNE 30, 2025**

NOTE 10 – POSTEMPLOYMENT BENEFITS OTHER THAN PENSIONS (OPEB) (continued)

2. MPP Program

C. Actuarial Assumptions and Other Inputs (continued)

In addition, assumptions were made about future participation (enrollment) into the MPP Program because CalSTRS is unable to determine which members not currently participating meet all eligibility criteria for enrollment in the future. Assumed enrollment rates were derived based on past experience and are stratified by age with the probability of enrollment diminishing as the member’s age increases. This estimated enrollment rate was then applied to the population of members who may meet criteria necessary for eligibility and are not currently enrolled in the MPP Program.

For the valuation as of June 30, 2023, CalSTRS changed the mortality assumptions based on the July 1, 2017, through June 30, 2022, experience study. CalSTRS now uses a generational mortality assumption, which involves the use of a base mortality table and projection scales to reflect expected annual reductions in mortality rates at each age, resulting in increases in life expectancies each year into the future. The base mortality tables are CalSTRS custom tables derived to best fit the patterns of mortality among the members. The projection scale was set equal to 110 percent of the ultimate improvement factor from the Mortality Improvement Scale (MP-2019) table, issued by the Society of Actuaries.

D. Sensitivity of the Net OPEB Liability to Changes in the Discount Rate

The following presents the net OPEB liability of the District, as well as what the District’s net OPEB liability would be if it were calculated using a discount rate that is one percentage point lower or one percentage point higher than the current discount rate:

	1% Decrease (2.93%)	Valuation Discount Rate (3.93%)	1% Increase (4.93%)
Net OPEB liability	\$ 896,894	\$ 967,955	\$ 762,984

E. Sensitivity of the Net OPEB Liability to Changes in the Healthcare Cost Trend Rate

The following presents the net OPEB liability of the District, as well as what the District’s net OPEB liability would be if it were calculated using a healthcare cost trend rate that is one percentage point lower or one percentage point higher than the current healthcare cost trend rate:

	1% Decrease (4.00% Part A and 5.50% Part B)	Healthcare Cost Trend Rate (5.00% Part A and 6.50% Part B)	1% Increase (6.00% Part A and 7.50% Part B)
Net OPEB liability	\$ 759,326	\$ 967,955	\$ 899,708

**NEWPORT-MESA UNIFIED SCHOOL DISTRICT
 NOTES TO FINANCIAL STATEMENTS, continued
 JUNE 30, 2025**

NOTE 10 – POSTEMPLOYMENT BENEFITS OTHER THAN PENSIONS (OPEB) (continued)

2. MPP Program

F. OPEB Expense and Deferred Inflows of Resources Related to OPEB

For the fiscal year ended June 30, 2025, the District recognized OPEB expense of \$204,293.

NOTE 11 – PENSION PLANS

Qualified employees are covered under multiple-employer contributory retirement plans maintained by agencies of the State of California. Certificated employees are members of the California State Teachers' Retirement System (CalSTRS), and classified employees are members of the California Public Employees' Retirement System (CalPERS). The District reported its proportionate share of the net pension liabilities, pension expense, deferred outflow of resources, and deferred inflow of resources for each of the above plans as follows:

	<u>Net pension liability</u>	<u>Deferred outflows related to pensions</u>	<u>Deferred inflows related to pensions</u>	<u>Pension expense</u>
CalSTRS Pension	\$ 167,191,087	\$ 71,129,815	\$ 22,688,736	\$ 18,043,657
CalPERS Pension	125,953,530	39,320,762	4,416,525	16,343,183
Total	<u>\$ 293,144,617</u>	<u>\$ 110,450,577</u>	<u>\$ 27,105,261</u>	<u>\$ 34,386,840</u>

A. California State Teachers' Retirement System (CalSTRS)

Plan Description

The District contributes to the California State Teachers' Retirement System (CalSTRS); a cost-sharing multiple employer public employee retirement system defined benefit pension plan administered by CalSTRS. The plan provides retirement and disability benefits and survivor benefits to beneficiaries. Benefit provisions are established by state statutes, as legislatively amended, within the State Teachers' Retirement Law. CalSTRS issues a separate annual comprehensive financial report that includes financial statements and required supplementary information. Copies of the CalSTRS annual financial report may be obtained from CalSTRS, P.O. Box 15275, Sacramento, CA 95851-0275.

Benefits Provided

The CalSTRS defined benefit plan has two benefit formulas:

1. CalSTRS 2% at 60: Members first hired on or before December 31, 2012, to perform service that could be creditable to CalSTRS. CalSTRS 2% at 60 members are eligible for normal retirement at age 60, with a minimum of five years of credited service. The normal retirement benefit is equal to 2.0 percent of final compensation for each year of credited service. Early retirement options are available at age 55 with five years of credited service or as early as age 50 with 30 years of credited service. The age factor for retirements after age 60 increases with each quarter year of age to 2.4 percent at age 63 or older. Members who have 30 years or more of credited service receive an additional increase of up to 0.2 percent to the age factor, known as the career factor. The maximum benefit with the career factor is 2.4 percent of final compensation.
2. CalSTRS 2% at 62: Members first hired on or after January 1, 2013, to perform service that could be creditable to CalSTRS. CalSTRS 2% at 62 members are eligible for normal retirement at age 62, with a minimum of five years of credited service. The normal retirement benefit is equal to 2.0 percent of final compensation for each year of credited service. An early retirement option is available at age 55. The age factor for retirement after age 62 increases with each quarter year of age to 2.4 percent at age 65 or older.

**NEWPORT-MESA UNIFIED SCHOOL DISTRICT
 NOTES TO FINANCIAL STATEMENTS, continued
 JUNE 30, 2025**

NOTE 11 – PENSION PLANS (continued)

A. California State Teachers’ Retirement System (CalSTRS) (continued)

Contributions

Active plan CalSTRS 2% at 60 and 2% at 62 members are required to contribute 10.25% and 10.205% of their salary for fiscal year 2025, respectively, and the District is required to contribute an actuarially determined rate. The actuarial methods and assumptions used for determining the rate are those adopted by CalSTRS Teachers' Retirement Board. The required employer contribution rate for fiscal year 2025 was 19.10% of annual payroll. The contribution requirements of the plan members are established by state statute. Contributions to the plan from the District were \$34,702,667 for the year ended June 30, 2025.

On-Behalf Payments

The District was the recipient of on-behalf payments made by the State of California to CalSTRS for K-12 education. These payments consist of state general fund contributions of approximately \$15,488,929 to CalSTRS.

Pension Liabilities, Pension Expense, and Deferred Outflows of Resources and Deferred Inflows of Resources Related to Pensions

At June 30, 2025, the District reported a liability for its proportionate share of the net pension liability that reflected a reduction for State pension support provided to the District. The amount recognized by the District as its proportionate share of the net pension liability, the related State support, and the total portion of the net pension liability that was associated with the District were as follows:

District's proportionate share of the net pension liability	\$ 167,191,087
State's proportionate share of the net pension liability associated with the District	<u>76,709,023</u>
Total	<u>\$ 243,900,110</u>

The net pension liability was measured as of June 30, 2024, and the total pension liability used to calculate the net pension liability was determined by applying update procedures to an actuarial valuation as of June 30, 2023 and rolling forward the total pension liability to June 30, 2024. The District’s proportion of the net pension liability was based on a projection of the District’s long-term share of contributions to the pension plan relative to the projected contributions of all participating school districts, actuarially determined. At June 30, 2024, the District’s proportion was 0.249 percent, which was a decrease of 0.003 percent from its proportion measured as of June 30, 2023.

**NEWPORT-MESA UNIFIED SCHOOL DISTRICT
NOTES TO FINANCIAL STATEMENTS, continued
JUNE 30, 2025**

NOTE 11 – PENSION PLANS (continued)

A. California State Teachers’ Retirement System (CalSTRS) (continued)

Pension Liabilities, Pension Expense, and Deferred Outflows of Resources and Deferred Inflows of Resources Related to Pensions (continued)

For the year ended June 30, 2025, the District recognized pension expense of \$18,043,657. In addition, the District recognized pension expense and revenue of \$(7,329,062) for support provided by the State. At June 30, 2025, the District reported deferred outflows of resources and deferred inflows of resources related to pensions from the following sources:

	<u>Deferred Outflows of Resources</u>	<u>Deferred Inflows of Resources</u>
Differences between projected and actual earnings on plan investments	\$ -	\$ 674,609
Differences between expected and actual experience	18,911,464	7,311,172
Changes in assumptions	731,864	11,418,571
Changes in proportion and differences between District contributions and proportionate share of contributions	16,783,820	3,284,384
District contributions subsequent to the measurement date	34,702,667	-
Total	<u>\$ 71,129,815</u>	<u>\$ 22,688,736</u>

The \$34,702,667 reported as deferred outflows of resources related to pensions resulting from District contributions subsequent to the measurement date will be recognized as a reduction of the net pension liability in the year ended June 30, 2026. Other amounts reported as deferred outflows of resources and deferred inflows of resources related to pensions will be recognized in pension expense as follows:

<u>Year Ended June 30,</u>	<u>Deferred Outflows of Resources</u>	<u>Deferred Inflows of Resources</u>
2026	\$ 9,007,960	\$ 16,950,106
2027	9,007,958	(8,906,331)
2028	7,075,332	5,362,527
2029	6,693,290	4,921,916
2030	3,559,746	2,451,202
2031	1,082,862	1,909,316
Total	<u>\$ 36,427,148</u>	<u>\$ 22,688,736</u>

**NEWPORT-MESA UNIFIED SCHOOL DISTRICT
NOTES TO FINANCIAL STATEMENTS, continued
JUNE 30, 2025**

NOTE 11 – PENSION PLANS (continued)

A. California State Teachers’ Retirement System (CalSTRS) (continued)

Actuarial Assumptions

The total pension liability was determined by applying update procedures to an actuarial valuation as of June 30, 2023, and rolling forward the total pension liability to June 30, 2024 using the following actuarial assumptions, applied to all periods included in the measurement:

Consumer Price Inflation	2.75%
Investment Rate of Return*	7.10%
Wage Growth	3.50%

* Net of investment expenses, but gross of administrative expenses.

CalSTRS uses custom mortality tables to best fit the patterns of mortality among its members. These custom tables are based on MP-2021 series tables adjusted to fit CalSTRS experience.

The actuarial assumptions used in the June 30, 2023 valuation were based on the results of an actuarial experience study for the period July 1, 2017 through June 30, 2022.

The long-term expected rate of return on pension plan investments was determined using a building-block method in which best-estimate ranges of expected future real rates of return (expected returns, net of pension plan investment expense and inflation) are developed for each major asset class. The best-estimate ranges were developed using capital market assumptions from CalSTRS general investment consultant (Pension Consulting Alliance–PCA) as an input to the process. The actuarial investment rate of return assumption was adopted by the board in January 2024 in conjunction with the most recent experience study. For each current and future valuation, CalSTRS’ independent consulting actuary (Milliman) reviews the return assumption for reasonableness based on the most current capital market assumptions. Best estimates of expected 20-year geometrically linked real rates of return and the assumed asset allocation for each major asset class as of June 30, 2024, are summarized in the following table:

Asset Class	Assumed Asset Allocation	Long-Term Expected Real Rate of Return*
Public Equity	38%	5.25%
Real Estate	15%	4.05%
Private Equity	14%	6.75%
Fixed Income	14%	2.45%
Risk Mitigating Strategies	10%	2.25%
Inflation Sensitive	7%	3.65%
Cash/Liquidity	2%	0.05%
	100%	

*Real return is net of assumed 2.75% inflation.

**NEWPORT-MESA UNIFIED SCHOOL DISTRICT
 NOTES TO FINANCIAL STATEMENTS, continued
 JUNE 30, 2025**

NOTE 11 – PENSION PLANS (continued)

A. California State Teachers’ Retirement System (CalSTRS) (continued)

Discount Rate

The discount rate used to measure the total pension liability was 7.10 percent. The projection of cash flows used to determine the discount rate assumed that contributions from plan members and employers will be made at statutory contribution rates in accordance with the rate increases per AB 1469. Projected inflows from investment earnings were calculated using the long-term assumed investment rate of return (7.10 percent) and assuming that contributions, benefit payments, and administrative expense occur midyear. Based on those assumptions, the Plan’s fiduciary net position was projected to be available to make all projected future benefit payments to current plan members. Therefore, the long-term assumed investment rate of return was applied to all periods of projected benefit payments to determine the total pension liability.

Sensitivity of the District’s Proportionate Share of the Net Pension Liability to Changes in the Discount Rate

The following presents the District’s proportionate share of the net pension liability calculated using the discount rate of 7.10 percent, as well as what the District’s proportionate share of the net pension liability would be if it were calculated using a discount rate that is 1-percentage-point lower (6.10 percent) or 1-percentage-point higher (8.10 percent) than the current rate:

	1% Decrease (6.10%)	Current Discount Rate (7.10%)	1% Increase (8.10%)
District's proportionate share of the net pension liability	\$ 297,378,235	\$ 167,191,087	\$ 58,479,416

Pension Plan Fiduciary Net Position

Detailed information about the pension plan’s fiduciary net position is available in the separately issued CalSTRS financial report.

**NEWPORT-MESA UNIFIED SCHOOL DISTRICT
NOTES TO FINANCIAL STATEMENTS, continued
JUNE 30, 2025**

NOTE 11 – PENSION PLANS (continued)

B. California Public Employees' Retirement System (CalPERS)

Plan Description

The District contributes to the School Employer Pool under the California Public Employees' Retirement System (CalPERS); a cost-sharing multiple-employer public employee retirement system defined benefit pension plan administered by CalPERS. The plan provides retirement and disability benefits, annual cost-of-living adjustments, and death benefits to plan members and beneficiaries. Benefit provisions are established by state statutes, as legislatively amended, within the Public Employees' Retirement Laws. CalPERS issues a separate annual comprehensive financial report that includes financial statements and required supplementary information. Copies of the CalPERS annual financial report may be obtained from the CalPERS Executive Office, 400 Q Street, Sacramento, CA 95811.

Benefits Provided

The benefits for the defined benefit plan are based on members' years of service, age, final compensation, and benefit formula. Benefits are provided for disability, death, and survivors of eligible members or beneficiaries. Members become fully vested in their retirement benefits earned to date after five years of credited service.

Contributions

Active plan members who entered into the plan prior to January 1, 2013, are required to contribute 7.0% of their salary. The California Public Employees' Pension Reform Act (PEPRA) specifies that new members entering into the plan on or after January 1, 2013, shall pay the higher of fifty percent of normal costs or 8.0% of their salary. Additionally, for new members entering the plan on or after January 1, 2013, the employer is prohibited from paying any of the employee contribution to CalPERS unless the employer payment of the member's contribution is specified in an employment agreement or collective bargaining agreement that expires after January 1, 2013.

The District is required to contribute an actuarially determined rate. The actuarial methods and assumptions used for determining the rate are those adopted by the CalPERS Board of Administration. The required employer contribution rate for fiscal year 2025 was 27.05% of annual payroll. Contributions to the plan from the District were \$21,084,835 for the year ended June 30, 2025.

Pension Liabilities, Pension Expense, and Deferred Outflows of Resources and Deferred Inflows of Resources Related to Pensions

At June 30, 2025, the District reported a liability of \$125,953,530 for its proportionate share of the net pension liability. The net pension liability was measured as of June 30, 2024, and the total pension liability used to calculate the net pension liability was determined by applying update procedures to an actuarial valuation as of June 30, 2023 and rolling forward the total pension liability to June 30, 2024. The District's proportion of the net pension liability was based on a projection of the District's long-term share of contributions to the pension plan relative to the projected contributions of all participating school districts, actuarially determined. At June 30, 2024, the District's proportion was 0.352 percent, which was a decrease of 0.007 percent from its proportion measured as of June 30, 2023.

**NEWPORT-MESA UNIFIED SCHOOL DISTRICT
NOTES TO FINANCIAL STATEMENTS, continued
JUNE 30, 2025**

NOTE 11 – PENSION PLANS (continued)

B. California Public Employees’ Retirement System (CalPERS) (continued)

Pension Liabilities, Pension Expense, and Deferred Outflows of Resources and Deferred Inflows of Resources Related to Pensions (continued)

For the year ended June 30, 2025, the District recognized pension expense of \$16,343,183. At June 30, 2025, the District reported deferred outflows of resources and deferred inflows of resources related to pensions from the following sources:

	<u>Deferred Outflows of Resources</u>	<u>Deferred Inflows of Resources</u>
Differences between projected and actual earnings on plan investments	\$ 4,892,567	\$ -
Differences between expected and actual experience	10,559,362	901,445
Changes in assumptions	2,783,998	-
Changes in proportion and differences between District contributions and proportionate share of contributions	-	3,515,080
District contributions subsequent to the measurement date	21,084,835	-
Total	<u>\$ 39,320,762</u>	<u>\$ 4,416,525</u>

The \$21,084,835 reported as deferred outflows of resources related to pensions resulting from District contributions subsequent to the measurement date will be recognized as a reduction of the net pension liability in the year ended June 30, 2026. Other amounts reported as deferred outflows of resources and deferred inflows of resources related to pensions will be recognized in pension expense as follows:

<u>Year Ended June 30,</u>	<u>Deferred Outflows of Resources</u>	<u>Deferred Inflows of Resources</u>
2026	\$ 7,008,393	\$ 3,949,728
2027	11,543,639	466,797
2028	1,231,978	-
2029	(1,548,083)	-
Total	<u>\$ 18,235,927</u>	<u>\$ 4,416,525</u>

**NEWPORT-MESA UNIFIED SCHOOL DISTRICT
NOTES TO FINANCIAL STATEMENTS, continued
JUNE 30, 2025**

NOTE 11 – PENSION PLANS (continued)

B. California Public Employees’ Retirement System (CalPERS) (continued)

Actuarial Assumptions

The total pension liability was determined by applying update procedures to an actuarial valuation as of June 30, 2023, and rolling forward the total pension liability to June 30, 2024 using the following actuarial assumptions, applied to all periods included in the measurement:

Inflation	2.30%
Discount Rate	6.90%
Salary Increases	Varies by Entry Age and Service

CalPERS uses custom mortality tables to best fit the patterns of mortality among its members. These custom tables are derived using CalPERS’ membership data for all funds. The table includes 15 years of mortality improvements using the Society of Actuaries Scale 80% of scale MP 2020.

The actuarial assumptions used in the June 30, 2023, valuation were based on the results of an actuarial experience study for the period from 2000 through 2019.

The long-term expected rate of return on pension plan investments was determined using a building block method in which best estimate ranges of expected future real rates of return (expected returns, net of pension plan investment expense and inflation) are developed for each major asset class. In determining the long-term expected rate of return, both short-term and long-term market return expectations as well as the expected pension fund cash flows were taken into account. Such cash flows were developed assuming that both members and employers will make their required contributions on time and as scheduled in all future years. Using historical returns of all the funds’ asset classes, expected compound (geometric) returns were calculated over the short-term (first 10 years) and the long-term (11+ years) using a building block approach. Using the expected nominal returns for both short-term and long-term, the present value of benefits was calculated for each fund. The expected rate of return was set by calculating the single equivalent expected return that arrived at the same present value of benefits for cash flows as the one calculated using both short-term and long-term returns. The expected rate of return was then set equivalent to the single equivalent rate calculated above and adjusted to account for assumed administrative expenses.

**NEWPORT-MESA UNIFIED SCHOOL DISTRICT
NOTES TO FINANCIAL STATEMENTS, continued
JUNE 30, 2025**

NOTE 11 – PENSION PLANS (continued)

B. California Public Employees’ Retirement System (CalPERS) (continued)

Actuarial Assumptions (continued)

The table below reflects long-term expected real rate of return by asset class. The rate of return was calculated using the capital market assumptions applied to determine the discount rate and asset allocation. These geometric rates of return are net of administrative expenses.

Asset Class	Assumed Asset Allocation	Real Return Years 1 – 10*
Global Equity – cap-weighted	30.0%	4.54%
Global Equity – non-cap-weighted	12.0%	3.84%
Private Equity	13.0%	7.28%
Treasury	5.0%	0.27%
Mortgage-backed securities	5.0%	0.50%
Investment grade corporates	10.0%	1.56%
High yield	5.0%	2.27%
Emerging market debt	5.0%	2.48%
Private debt	5.0%	3.57%
Real assets	15.0%	3.21%
Leverage	(5.0)%	(0.59)%
	<u>100.0%</u>	

*An expected inflation of 2.30% used for this period. Figures are based on the 2021-22 CalPERS Asset Liability Management Study

Discount Rate

The discount rate used to measure the total pension liability was 6.90 percent. A projection of the expected benefit payments and contributions was performed to determine if assets would run out. The test revealed the assets would not run out. Therefore, the long-term expected rate of return on pension plan investments was applied to all periods of projected benefit payments to determine the total pension liability for the Schools Pool. The results of the crossover testing for the Schools Pool are presented in a detailed report that can be obtained at CalPERS’ website.

Sensitivity of the District’s Proportionate Share of the Net Pension Liability to Changes in the Discount Rate

The following presents the District’s proportionate share of the net pension liability calculated using the discount rate of 6.90 percent, as well as what the District’s proportionate share of the net pension liability would be if it were calculated using a discount rate that is 1-percentage-point lower (5.90 percent) or 1-percentage-point higher (7.90 percent) than the current rate:

	1% Decrease (5.90%)	Current Discount Rate (6.90%)	1% Increase (7.90%)
District’s proportionate share of the net pension liability	\$ 187,105,020	\$ 125,953,530	\$ 75,437,532

Pension Plan Fiduciary Net Position

Detailed information about the pension plan’s fiduciary net position is available in the separately issued CalPERS financial report.

**NEWPORT-MESA UNIFIED SCHOOL DISTRICT
 NOTES TO FINANCIAL STATEMENTS, continued
 JUNE 30, 2025**

NOTE 12 – RISK MANAGEMENT

The District's risk management activities are recorded in the General Fund. Employee life, health, and disability programs are administered by the General Fund through the purchase of commercial insurance. The District participates in the Alliance of Schools for Cooperative Insurance Program (ASCIP) Joint Powers Authority public entity risk pool for the property and liability coverage. Refer to Note 14 for additional information regarding the JPAs. The Workers' Compensation Program, for which the District retains risk of loss, is administered by the Internal Service Fund. Excess workers' compensation coverage is obtained through the purchase of commercial insurance.

For insured programs, there have been no significant reductions in insurance coverage. Settlement amounts have not exceeded insurance coverage for the current year or the three prior years.

The District establishes a liability for both reported and unreported events, which includes estimates of both future payments of losses and related claim adjustment expenses. Unpaid claims and claims adjustment expenses were discounted at 2.5% and presented at their net present value. The following represent the changes in approximate aggregate liabilities for the District from July 1, 2023 to June 30, 2025:

	Workers' Compensation
Liability Balance, July 01, 2023	\$ 10,082,596
Claims & changes in estimates	803,662
Claims payments	<u>(1,793,215)</u>
Liability Balance, July 01, 2024	\$ 9,093,043
Claims & changes in estimates	8,473,548
Claims payments	<u>(6,009,659)</u>
Liability Balance, June 30, 2025	<u>\$ 11,556,932</u>
Assets available to pay claims at June 30, 2025	<u>\$ 12,370,984</u>

NOTE 13 – COMMITMENTS AND CONTINGENCIES

A. Grants

The District received financial assistance from federal and state agencies in the form of grants. The disbursement of funds received under these programs generally requires compliance with terms and conditions specified in the grant agreements and are subject to audit by the grantor agencies. Any disallowed claims resulting from such audits could become a liability of the General Fund or other applicable funds. However, in the opinion of management, any such disallowed claims will not have a material adverse effect on the overall financial position of the District at June 30, 2025.

B. Litigation

The District is involved in various litigation arising from the normal course of business. In the opinion of management and legal counsel, the disposition of all litigation pending is not expected to have a material adverse effect on the overall financial position of the District at June 30, 2025.

**NEWPORT-MESA UNIFIED SCHOOL DISTRICT
NOTES TO FINANCIAL STATEMENTS, continued
JUNE 30, 2025**

NOTE 13 – COMMITMENTS AND CONTINGENCIES (continued)

C. Construction Commitments

As of June 30, 2025, the District had \$16,264,659 in commitments with respect to unfinished capital projects.

NOTE 14 – PARTICIPATION IN JOINT POWERS AUTHORITIES

The District participates in three joint ventures under joint powers authorities (JPAs), the Alliance of Schools for Cooperative Insurance Program (ASCIP) Joint Powers Authority public entity risk pool, the Bonita Canyon Public Facilities Financing Authority (BCPFFA), and the Coastline Regional Occupational Program (CROP) Joint Power Authority. The relationships between the District and the JPAs are such that the JPAs are not component units of the District for financial reporting purposes.

The JPAs have budgeting and financial reporting requirements independent of member units, and their financial statements are not presented in these financial statements. However, fund transactions between the JPAs and the District are included in these statements. The audited financial statements are generally available from the respective entities.

NOTE 15 – DEFERRED OUTFLOWS/INFLOWS OF RESOURCES

A. Refunded Debt

Pursuant to GASB Statement No. 63, *Financial Reporting of Deferred Outflows of Resources, Deferred Inflows of Resources, and Net Position* and GASB Statement No. 65, *Items Previously Reported as Assets and Liabilities*, the District recognized deferred outflows or inflows of resources in the District-wide financial statements. The deferred outflow of resources pertains to the difference in the carrying value of the refunded debt and its reacquisition price (deferred amount on refunding). Previous financial reporting standards require this to be presented as part of the District's long-term debt. This deferred outflow of resources is recognized as a component of interest expense in a systematic and rational manner over the remaining life of the old debt or the new debt, whichever is shorter. At June 30, 2025, the deferred amount on refunding was \$6,499,341.

B. Pension Plans

Pursuant to GASB Statement No. 68, *Accounting and Financial Reporting for Pensions*, the District recognized deferred outflows of resources related to pensions and deferred inflows of resources related to pensions in the District-wide financial statements. Further information regarding the deferred outflows of resources and deferred inflows of resources can be found at Note 11. At June 30, 2025, total deferred outflows related to pensions was \$110,450,577 and total deferred inflows related to pensions was \$27,105,261.

C. Other Postemployment Benefits

Pursuant to GASB Statement No. 75, *Accounting and Financial Reporting for Postemployment Benefits Other Than Pensions*, the District recognized deferred outflows of resources related to other postemployment benefits and deferred inflows of resources related to other postemployment benefits in the District-wide financial statements. Further information regarding the deferred outflows of resources and deferred inflows of resources can be found at Note 10. At June 30, 2025, total deferred outflows related to other postemployment benefits was \$9,063,025 and total deferred inflows related to other postemployment benefits was \$54,772,464.

REQUIRED SUPPLEMENTARY INFORMATION

**NEWPORT-MESA UNIFIED SCHOOL DISTRICT
GENERAL FUND – BUDGETARY COMPARISON SCHEDULE
FOR THE YEAR ENDED JUNE 30, 2025**

	Budgeted Amounts		Actual* (Budgetary Basis)	Variances - Final to Actual
	Original	Final		
REVENUES				
LCFF sources	\$ 381,056,977	\$ 391,623,560	\$ 384,627,798	\$ (6,995,762)
Federal sources	13,885,898	15,490,115	12,172,498	(3,317,617)
Other state sources	38,337,136	58,987,213	57,361,816	(1,625,397)
Other local sources	12,565,325	16,808,033	20,926,242	4,118,209
Total Revenues	445,845,336	482,908,921	475,088,354	(7,820,567)
EXPENDITURES				
Certificated salaries	181,622,741	189,414,577	187,300,478	2,114,099
Classified salaries	76,048,531	75,480,957	77,752,873	(2,271,916)
Employee benefits	119,498,736	136,598,198	137,624,997	(1,026,799)
Books and supplies	31,115,267	33,523,029	24,259,379	9,263,650
Services and other operating expenditures	55,111,504	64,923,216	76,381,424	(11,458,208)
Capital outlay	2,307,170	1,893,500	4,472,564	(2,579,064)
Other outgo				
Excluding transfers of indirect costs	4,172,578	4,100,800	4,386,866	(286,066)
Transfers of indirect costs	(656,127)	(720,686)	(682,862)	(37,824)
Total Expenditures	469,220,400	505,213,591	511,495,719	(6,282,128)
Excess (Deficiency) of Revenues Over Expenditures	(23,375,064)	(22,304,670)	(36,407,365)	(14,102,695)
Other Financing Sources (Uses)				
Transfers in	4,944,434	5,097,843	10,475,000	5,377,157
Transfers out	(8,352,651)	(8,352,651)	(868,103)	7,484,548
Net Financing Sources (Uses)	(3,408,217)	(3,254,808)	9,606,897	12,861,705
NET CHANGE IN FUND BALANCE	(26,783,281)	(25,559,478)	(26,800,468)	(1,240,990)
Fund Balance - Beginning	116,094,196	126,027,434	126,027,434	-
Fund Balance - Ending	\$ 89,310,915	\$ 100,467,956	\$ 99,226,966	\$ (1,240,990)

* The actual amounts reported on this schedule do not agree with the amounts reported on the Statement of Revenues, Expenditures, and Changes in Fund Balance for the following reasons:

- The amounts on that schedule include the financial activity of the Special Reserve Fund for Other Than Capital Outlay Projects, the Special Reserve Fund for Postemployment Benefits, and the Retiree Benefit Fund, in accordance with the fund type definitions promulgated by GASB Statement No. 54.
- Audit reclassifications are not included in this schedule.

**NEWPORT-MESA UNIFIED SCHOOL DISTRICT
SCHEDULE OF CHANGES IN TOTAL OPEB LIABILITY AND RELATED RATIOS – DISTRICT OPEB PLAN
FOR THE YEAR ENDED JUNE 30, 2025**

	<u>June 30, 2025</u>	<u>June 30, 2024</u>	<u>June 30, 2023</u>	<u>June 30, 2022</u>	<u>June 30, 2021</u>	<u>June 30, 2020</u>	<u>June 30, 2019</u>	<u>June 30, 2018</u>
Total OPEB Liability								
Service cost	\$ 6,424,615	\$ 6,222,387	\$ 6,311,216	\$ 7,810,304	\$ 7,486,306	\$ 6,197,752	\$ 6,232,910	\$ 6,356,417
Interest on total OPEB liability	5,824,019	5,317,477	4,908,433	2,952,300	3,326,097	3,543,001	3,586,629	3,556,064
Difference between expected and actual experience	(6,752,533)	2,529,670	-	(4,810,599)	-	(8,947,739)	-	-
Changes of assumptions	(37,508,731)	3,726,867	2,541,809	(14,830,760)	4,302,440	907,004	1,815,674	1,390,692
Benefits payments	<u>(5,174,860)</u>	<u>(5,174,860)</u>	<u>(4,691,986)</u>	<u>(5,402,286)</u>	<u>(4,702,901)</u>	<u>(5,165,629)</u>	<u>(4,769,780)</u>	<u>(4,104,142)</u>
Net change in total OPEB liability	(37,187,490)	12,621,541	9,069,472	(14,281,041)	10,411,942	(3,465,611)	6,865,433	7,199,031
Total OPEB liability - beginning	<u>137,712,872</u>	<u>125,091,331</u>	<u>116,021,859</u>	<u>130,302,900</u>	<u>119,890,958</u>	<u>123,356,569</u>	<u>116,491,136</u>	<u>109,292,105</u>
Total OPEB liability - ending (a)	<u>\$ 100,525,382</u>	<u>\$ 137,712,872</u>	<u>\$ 125,091,331</u>	<u>\$ 116,021,859</u>	<u>\$ 130,302,900</u>	<u>\$ 119,890,958</u>	<u>\$ 123,356,569</u>	<u>\$ 116,491,136</u>
Plan fiduciary net position								
Contributions - employer	\$ 9,174,860	\$ 1,200,000	\$ 2,900,000	\$ -	\$ -	\$ -	\$ -	\$ -
Net investment income	830,809	362,416	132,513	-	-	-	-	-
Benefit payments	(5,174,860)	-	-	-	-	-	-	-
Administrative expenses	<u>(22,317)</u>	<u>(9,683)</u>	<u>(3,148)</u>	<u>-</u>	<u>-</u>	<u>-</u>	<u>-</u>	<u>-</u>
Net change in plan fiduciary net position	4,808,492	1,552,733	3,029,365	-	-	-	-	-
Plan fiduciary net position - beginning	<u>4,582,098</u>	<u>3,029,365</u>	<u>-</u>	<u>-</u>	<u>-</u>	<u>-</u>	<u>-</u>	<u>-</u>
Plan fiduciary net position - ending (b)	<u>\$ 9,390,590</u>	<u>\$ 4,582,098</u>	<u>\$ 3,029,365</u>	<u>\$ -</u>	<u>\$ -</u>	<u>\$ -</u>	<u>\$ -</u>	<u>\$ -</u>
District's net OPEB liability - ending (a) - (b)	<u>\$ 91,134,792</u>	<u>\$ 133,130,774</u>	<u>\$ 122,061,966</u>	<u>\$ 116,021,859</u>	<u>\$ 130,302,900</u>	<u>\$ 119,890,958</u>	<u>\$ 123,356,569</u>	<u>\$ 116,491,136</u>
Plan fiduciary net position as a percentage of the total OPEB liability	9.34%	3.33%	2.42%	0.00%	0.00%	0.00%	0.00%	0.00%
Covered-employee payroll	N/A*	N/A*	N/A*	N/A*	N/A*	N/A*	N/A*	N/A*
District's net OPEB liability (asset) as a percentage of covered-employee payroll	N/A*	N/A*	N/A*	N/A*	N/A*	N/A*	N/A*	N/A*

*The OPEB Plan contributions are not based on a measure of pay, therefore, covered-employee payroll is not presented.

**NEWPORT-MESA UNIFIED SCHOOL DISTRICT
SCHEDULE OF CHANGES IN NET OPEB LIABILITY AND RELATED RATIOS – MPP PROGRAM
FOR THE YEAR ENDED JUNE 30, 2025**

	<u>June 30, 2025</u>	<u>June 30, 2024</u>	<u>June 30, 2023</u>	<u>June 30, 2022</u>	<u>June 30, 2021</u>	<u>June 30, 2020</u>	<u>June 30, 2019</u>	<u>June 30, 2018</u>
District's proportion of the collective net MPP District OPEB liability	0.272%	0.252%	0.245%	0.377%	0.366%	0.424%	0.418%	0.406%
District's proportionate share of the collective net MPP Program OPEB liability	\$ 967,955	\$ 763,662	\$ 805,578	\$ 1,502,715	\$ 1,784,179	\$ 1,579,297	\$ 1,599,064	\$ 1,709,512
District's covered-employee payroll	N/A*	N/A*	N/A*	N/A*	N/A*	N/A*	N/A*	N/A*
District's proportionate share of the collective net MPP Program OPEB liability as a percentage of its covered-employee payroll	N/A*	N/A*	N/A*	N/A*	N/A*	N/A*	N/A*	N/A*
MPP Program fiduciary net position as a percentage of the net OPEB liability	(1.020%)	(0.960%)	(0.940%)	(0.800%)	(0.710%)	(0.810%)	(0.400%)	0.010%

* Not applicable - The MPP Program is closed to new entrants. Members who retire on or after July 1, 2012, are not eligible for coverage under the MPP Program.

**NEWPORT-MESA UNIFIED SCHOOL DISTRICT
SCHEDULE OF THE DISTRICT'S PROPORTIONATE SHARE OF THE NET PENSION LIABILITY - CALSTRS
FOR THE YEAR ENDED JUNE 30, 2025**

	<u>June 30, 2025</u>	<u>June 30, 2024</u>	<u>June 30, 2023</u>	<u>June 30, 2022</u>	<u>June 30, 2021</u>	<u>June 30, 2020</u>	<u>June 30, 2019</u>	<u>June 30, 2018</u>	<u>June 30, 2017</u>	<u>June 30, 2016</u>
District's proportion of the net pension liability	0.249%	0.252%	0.245%	0.251%	0.242%	0.240%	0.233%	0.224%	0.233%	0.244%
District's proportionate share of the net pension liability	\$ 167,191,087	\$ 191,674,965	\$ 169,928,562	\$ 114,060,105	\$ 234,150,468	\$ 216,516,683	\$ 213,913,594	\$ 207,523,362	\$ 188,647,018	\$ 164,342,374
State's proportionate share of the net pension liability associated with the District	<u>76,709,023</u>	<u>91,838,524</u>	<u>85,100,722</u>	<u>57,390,621</u>	<u>120,704,594</u>	<u>118,124,305</u>	<u>122,475,537</u>	<u>122,769,068</u>	<u>107,393,382</u>	<u>86,918,999</u>
Total	\$ 243,900,110	\$ 283,513,489	\$ 255,029,284	\$ 171,450,726	\$ 354,855,062	\$ 334,640,988	\$ 336,389,131	\$ 330,292,430	\$ 296,040,400	\$ 251,261,373
District's covered payroll	\$ 166,071,529	\$ 152,576,000	\$ 143,289,243	\$ 136,200,836	\$ 132,458,649	\$ 128,783,943	\$ 121,916,154	\$ 117,960,676	\$ 114,596,766	\$ 115,079,583
District's proportionate share of the net pension liability as a percentage of its covered payroll	100.67%	125.63%	118.59%	83.74%	176.77%	168.12%	175.46%	175.93%	164.62%	142.81%
Plan fiduciary net position as a percentage of the total pension liability	83.55%	80.62%	81.20%	87.21%	71.82%	72.56%	70.99%	69.46%	70.04%	74.02%

The amounts presented for each fiscal year were determined as of the year-end that occurred one year prior.

**NEWPORT-MESA UNIFIED SCHOOL DISTRICT
SCHEDULE OF THE DISTRICT'S PROPORTIONATE SHARE OF THE NET PENSION LIABILITY - CALPERS
FOR THE YEAR ENDED JUNE 30, 2025**

	<u>June 30, 2025</u>	<u>June 30, 2024</u>	<u>June 30, 2023</u>	<u>June 30, 2022</u>	<u>June 30, 2021</u>	<u>June 30, 2020</u>	<u>June 30, 2019</u>	<u>June 30, 2018</u>	<u>June 30, 2017</u>	<u>June 30, 2016</u>
District's proportion of the net pension liability	0.352%	0.359%	0.369%	0.383%	0.381%	0.380%	0.384%	0.379%	0.393%	0.407%
District's proportionate share of the net pension liability	\$ 125,953,530	\$ 130,092,283	\$ 126,941,578	\$ 77,910,981	\$ 116,943,653	\$ 110,594,096	\$ 102,500,194	\$ 90,460,321	\$ 77,584,002	\$ 59,973,861
District's covered payroll	\$ 69,626,865	\$ 62,189,180	\$ 54,429,258	\$ 54,970,734	\$ 54,932,965	\$ 51,595,549	\$ 49,724,396	\$ 48,105,184	\$ 47,007,715	\$ 45,250,752
District's proportionate share of the net pension liability as a percentage of its covered payroll	180.90%	209.19%	233.22%	141.73%	212.88%	214.35%	206.14%	188.05%	165.05%	132.54%
Plan fiduciary net position as a percentage of the total pension liability	72.29%	69.96%	69.76%	80.97%	70.00%	70.05%	70.85%	71.87%	73.90%	79.43%

The amounts presented for each fiscal year were determined as of the year-end that occurred one year prior.

**NEWPORT-MESA UNIFIED SCHOOL DISTRICT
SCHEDULE OF DISTRICT CONTRIBUTIONS - CALSTRS
FOR THE YEAR ENDED JUNE 30, 2025**

	<u>June 30, 2025</u>	<u>June 30, 2024</u>	<u>June 30, 2023</u>	<u>June 30, 2022</u>	<u>June 30, 2021</u>	<u>June 30, 2020</u>	<u>June 30, 2019</u>	<u>June 30, 2018</u>	<u>June 30, 2017</u>	<u>June 30, 2016</u>
Contractually required contribution	\$ 34,702,667	\$ 31,301,538	\$ 29,142,016	\$ 24,244,540	\$ 21,996,435	\$ 22,650,429	\$ 20,966,026	\$ 17,592,501	\$ 14,839,453	\$ 12,296,233
Contributions in relation to the contractually required contribution*	(34,702,667)	(31,301,538)	(29,142,016)	(24,244,540)	(21,996,435)	(22,650,429)	(20,966,026)	(17,592,501)	(14,839,453)	(12,296,233)
Contribution deficiency (excess)	<u>\$ -</u>	<u>\$ -</u>	<u>\$ -</u>	<u>\$ -</u>	<u>\$ -</u>	<u>\$ -</u>	<u>\$ -</u>	<u>\$ -</u>	<u>\$ -</u>	<u>\$ -</u>
District's covered payroll	\$ 196,177,423	\$ 166,071,529	\$ 152,576,000	\$ 143,289,243	\$ 136,200,836	\$ 132,458,649	\$ 128,783,943	\$ 121,916,154	\$ 117,960,676	\$ 114,596,766
Contributions as a percentage of covered payroll	17.69%	18.85%	19.10%	16.92%	16.15%	17.10%	16.28%	14.43%	12.58%	10.73%

*Amounts do not include on-behalf contributions

**NEWPORT-MESA UNIFIED SCHOOL DISTRICT
SCHEDULE OF DISTRICT CONTRIBUTIONS - CALPERS
FOR THE YEAR ENDED JUNE 30, 2025**

	<u>June 30, 2025</u>	<u>June 30, 2024</u>	<u>June 30, 2023</u>	<u>June 30, 2022</u>	<u>June 30, 2021</u>	<u>June 30, 2020</u>	<u>June 30, 2019</u>	<u>June 30, 2018</u>	<u>June 30, 2017</u>	<u>June 30, 2016</u>
Contractually required contribution	\$ 21,084,835	\$ 18,602,261	\$ 15,772,321	\$ 12,469,743	\$ 11,378,942	\$ 10,833,330	\$ 9,319,188	\$ 7,722,696	\$ 6,680,848	\$ 5,569,004
Contributions in relation to the contractually required contribution*	(21,084,835)	(18,602,261)	(15,772,321)	(12,469,743)	(11,378,942)	(10,833,330)	(9,319,188)	(7,722,696)	(6,680,848)	(5,569,004)
Contribution deficiency (excess)	<u>\$ -</u>	<u>\$ -</u>	<u>\$ -</u>	<u>\$ -</u>	<u>\$ -</u>	<u>\$ -</u>	<u>\$ -</u>	<u>\$ -</u>	<u>\$ -</u>	<u>\$ -</u>
District's covered payroll	\$ 81,086,711	\$ 69,626,865	\$ 62,189,180	\$ 54,429,258	\$ 54,970,734	\$ 54,932,965	\$ 51,595,549	\$ 49,724,396	\$ 48,105,184	\$ 47,007,715
Contributions as a percentage of covered payroll	26.00%	26.72%	25.36%	22.91%	20.70%	19.72%	18.06%	15.53%	13.89%	11.85%

*Amounts do not include on-behalf contributions

**NEWPORT-MESA UNIFIED SCHOOL DISTRICT
NOTES TO REQUIRED SUPPLEMENTARY INFORMATION
FOR THE YEAR ENDED JUNE 30, 2025**

NOTE 1 – PURPOSE OF SCHEDULES

Budgetary Comparison Schedule

This schedule is required by GASB Statement No. 34 as required supplementary information (RSI) for the General Fund and for each major special revenue fund that has a legally adopted annual budget. The budgetary comparison schedule presents both (a) the original and (b) the final appropriated budgets for the reporting period as well as (c) actual inflows, outflows, and balances, stated on the District's budgetary basis. A separate column to report the variance between the final budget and actual amounts is also presented, although not required.

Schedule of Changes in Total OPEB Liability and Related Ratios – District OPEB Plan

This 10-year schedule is required by GASB Statement No. 75 for all sole and agent employers that provide other postemployment benefits (OPEB). Until a full 10-year trend is compiled, the schedule will only show those years under which GASB Statement No. 75 was applicable. The schedule presents the sources of change in the total OPEB liability, and the components of the total OPEB liability and related ratios, including the total OPEB liability as a percentage of covered-employee payroll.

Changes in Benefit Terms

There were no changes in benefit terms since the previous valuation.

Changes in Assumptions

The discount rate changed from 4.21% to 5.78% since the previous valuation.

Schedule of Changes in Net OPEB Liability and Related Ratios – MPP Program

This 10-year schedule is required by GASB Statement No. 75 for all sole and agent employers that provide other postemployment benefits (OPEB). Until a full 10-year trend is compiled, the schedule will only show those years under which GASB Statement No. 75 was applicable. The schedule presents the sources of change in the net OPEB liability, and the components of the net OPEB liability and related ratios, including the net OPEB liability as a percentage of covered-employee payroll.

Changes in Benefit Terms

There were no changes in benefit terms since the previous valuation.

Changes in Assumptions

The discount rate changed from 3.65% to 3.93% and the healthcare trend rate changed from 6.80% to 6.00% since the previous measurement for the District OPEB Plan. The healthcare trend rate changed from 4.50% for Part A and 5.40% for Part B to 5.00% for Part A and 6.50% for Part B since the previous valuation for the MPP Program.

Schedule of the District's Proportionate Share of the Net Pension Liability

This 10-year schedule is required by GASB Statement No. 68 for each cost-sharing pension plan. The schedule presents the District's proportion (percentage) of the collective net pension liability, the District's proportionate share (amount) of the collective net pension liability, the District's covered payroll, the District's proportionate share (amount) of the collective net pension liability as a percentage of the employer's covered payroll, and the pension plan's fiduciary net position as a percentage of the total pension liability.

Changes in Benefit Terms

There were no changes in benefit terms since the previous valuations for CalSTRS or CalPERS.

Changes in Assumptions

There were no changes in economic assumptions since the previous valuations for CalSTRS or CalPERS.

**NEWPORT-MESA UNIFIED SCHOOL DISTRICT
 NOTES TO REQUIRED SUPPLEMENTARY INFORMATION, continued
 FOR THE YEAR ENDED JUNE 30, 2025**

NOTE 1 – PURPOSE OF SCHEDULES (continued)

Schedule of District Contributions

This 10-year schedule is required by GASB Statement No. 68 for each cost-sharing pension plan. The schedule presents the District’s statutorily or contractually required employer contribution, the amount of contributions recognized by the pension plan in relation to the statutorily or contractually required employer contribution, the difference between the statutorily or contractually required employer contribution and the amount of contributions recognized by the pension plan in relation to the statutorily or contractually required employer contribution, the District’s covered payroll, and the amount of contributions recognized by the pension plan in relation to the statutorily or contractually required employer contribution as a percentage of the District’s covered payroll.

NOTE 2 – EXCESS OF EXPENDITURES OVER APPROPRIATIONS

For the year ended June 30, 2025, the District incurred an excess of expenditures over appropriations in individual major funds presented in the Budgetary Comparison Schedule by major object code, as follows:

	Expenditures and Other Uses		
	Budget	Actual	Excess
General Fund			
Classified salaries	\$ 75,480,957	\$ 77,752,873	\$ 2,271,916
Employee benefits	\$ 136,598,198	\$ 137,624,997	\$ 1,026,799
Services and other operating expenditures	\$ 64,923,216	\$ 76,381,424	\$ 11,458,208
Capital outlay	\$ 1,893,500	\$ 4,472,564	\$ 2,579,064
Other outgo			
Excluding transfers of indirect costs	\$ 4,100,800	\$ 4,386,866	\$ 286,066
Transfers of indirect costs	\$ (720,686)	\$ (682,862)	\$ 37,824

SUPPLEMENTARY INFORMATION

**NEWPORT-MESA UNIFIED SCHOOL DISTRICT
SCHEDULE OF EXPENDITURES OF FEDERAL AWARDS
FOR THE YEAR ENDED JUNE 30, 2025**

<u>Federal Grantor/Pass-Through Grantor/Program or Cluster</u>	<u>AL Number</u>	<u>Pass-Through Entity Identifying Number</u>	<u>Federal Expenditures</u>
U. S. DEPARTMENT OF EDUCATION:			
<i>Passed through California Department of Education:</i>			
Title I, Part A			
Title I, Part A, Basic Grants Low-Income and Neglected	84.010	14329	\$ 3,570,846
Comprehensive Support and Improvement for LEAs	84.010	15438	145,229
Subtotal Title I, Part A			<u>3,716,075</u>
Title II, Part A, Supporting Effective Instruction Local Grants	84.367	14341	839,702
Title III			
Title III, English Learner Student Program	84.365	14346	490,097
Title III, Immigrant Education Program	84.365	15146	30,317
Subtotal Title III			<u>520,414</u>
Title IV, Part A, Student Support and Academic Enrichment Grants	84.424	15396	211,453
Department of Rehabilitation: Workability II, Transitions Partnership Program	84.126	10006	548,324
Special Education Cluster			
IDEA Basic Local Assistance Entitlement, Part B, Sec 611	84.027	13379	5,117,997
IDEA Local Assistance, Part B, Sec 611, Private School ISPs	84.027	10115	165,236
IDEA Mental Health Average Daily Attendance (ADA) Allocation, Part B, Sec 611	84.027A	15197	210,235
IDEA Preschool Grants, Part B, Section 619 (Age 3-4-5)	84.173	13430	65,800
Alternate Dispute Resolution, Part B, Sec 611	84.027A	13007	29,964
Subtotal Special Education Cluster			<u>5,589,232</u>
IDEA Early Intervention Grants, Part C	84.181	23761	53,202
Strengthening Career and Technical Education for the 21st Century (Perkins V)	84.048	14894	176,059
COVID-19 Emergency Acts Funding/Education Stabilization Fund Discretionary Grants:			
Elementary and Secondary School Emergency Relief III (ESSER III) Fund	84.425	15559	518,037
Total U. S. Department of Education			<u>\$ 12,172,498</u>
U. S. DEPARTMENT OF AGRICULTURE:			
<i>Passed through California Department of Education:</i>			
Child Nutrition Cluster			
School Breakfast Program - Basic	10.553	13525	328,153
School Breakfast Program - Needy	10.553	13526	866,854
National School Lunch Program	10.555	13391	3,727,643
Meal Supplements	10.555	*	233,501
USDA Commodities	10.555	*	700,488
Summer Food Service Program for Children	10.559	13004	8,537
Subtotal Child Nutrition Cluster			<u>5,865,176</u>
Total U. S. Department of Agriculture			<u>5,865,176</u>
Total Federal Expenditures			<u>\$ 18,037,674</u>

* - Pass-Through Entity Identifying Number not available or not applicable

**NEWPORT-MESA UNIFIED SCHOOL DISTRICT
SCHEDULE OF AVERAGE DAILY ATTENDANCE (ADA)
FOR THE YEAR ENDED JUNE 30, 2025**

	Second Period Report	Annual Report
SCHOOL DISTRICT		
TK/K through Third		
Regular ADA	5,014.36	5,027.18
Extended Year Special Education	10.45	10.45
Special Education - Nonpublic Schools	0.42	1.33
Total TK/K through Third	5,025.23	5,038.96
Fourth through Sixth		
Regular ADA	3,422.58	3,431.02
Extended Year Special Education	4.35	4.35
Special Education - Nonpublic Schools	4.13	3.53
Extended Year Special Education - Nonpublic Schools	0.60	0.42
Total Fourth through Sixth	3,431.66	3,439.32
Seventh through Eighth		
Regular ADA	2,440.52	2,438.56
Extended Year Special Education	1.51	1.51
Special Education - Nonpublic Schools	3.91	4.84
Extended Year Special Education - Nonpublic Schools	0.33	0.32
Total Seventh through Eighth	2,446.27	2,445.23
Ninth through Twelfth		
Regular ADA	5,607.01	5,580.57
Extended Year Special Education	5.71	5.71
Special Education - Nonpublic Schools	8.01	9.59
Extended Year Special Education - Nonpublic Schools	0.45	0.78
Total Ninth through Twelfth	5,621.18	5,596.65
TOTAL SCHOOL DISTRICT	16,524.34	16,520.16

**NEWPORT-MESA UNIFIED SCHOOL DISTRICT
 SCHEDULE OF INSTRUCTIONAL TIME
 FOR THE YEAR ENDED JUNE 30, 2025**

Grade Level	Minutes Requirement	Actual Instructional Minutes	Number of Days	Status
Kindergarten	36,000	50,550	180	Complied
Grade 1	50,400	53,874	180	Complied
Grade 2	50,400	53,874	180	Complied
Grade 3	50,400	53,874	180	Complied
Grade 4	54,000	56,490	180	Complied
Grade 5	54,000	56,490	180	Complied
Grade 6	54,000	56,490	180	Complied
Grade 7	54,000	59,934	180	Complied
Grade 8	54,000	59,934	180	Complied
Grade 9	64,800	65,165	180	Complied
Grade 10	64,800	65,165	180	Complied
Grade 11	64,800	65,165	180	Complied
Grade 12	64,800	65,165	180	Complied

**NEWPORT-MESA UNIFIED SCHOOL DISTRICT
 SCHEDULE OF FINANCIAL TRENDS AND ANALYSIS
 FOR THE YEAR ENDED JUNE 30, 2025**

	2026 (Budget)	2025	2024	2023
General Fund - Budgetary Basis**				
Revenues And Other Financing Sources	\$ 506,556,247	\$ 485,563,354	\$ 489,255,603	\$ 478,093,650
Expenditures And Other Financing Uses	528,101,348	512,363,822	472,332,426	453,172,553
Net change in Fund Balance	<u>\$ (21,545,101)</u>	<u>\$ (26,800,468)</u>	<u>\$ 16,923,177</u>	<u>\$ 24,921,097</u>
Ending Fund Balance	<u>\$ 77,681,865</u>	<u>\$ 99,226,966</u>	<u>\$ 126,027,435</u>	<u>\$ 109,194,258</u>
Available Reserves*	<u>\$ 45,262,712</u>	<u>\$ 54,939,537</u>	<u>\$ 21,255,000</u>	<u>\$ 20,392,900</u>
Available Reserves As A Percentage Of Outgo	<u>8.57%</u>	<u>10.72%</u>	<u>4.50%</u>	<u>4.50%</u>
Long-term Liabilities	<u>\$ 732,356,444</u>	<u>\$ 751,049,713</u>	<u>\$ 810,518,797</u>	<u>\$ 772,811,982</u>
Average Daily Attendance At P-2	<u>16,505</u>	<u>16,524</u>	<u>16,626</u>	<u>16,528</u>

The General Fund ending fund balance has decreased by \$9,967,292 over the past two years. The fiscal year 2025-26 budget projects a further decrease of \$21,545,101. For a District this size, the State recommends available reserves of at least 3% of General Fund expenditures, transfers out, and other uses (total outgo).

The District has incurred operating surpluses in two of the past three years but anticipates incurring an operating deficit during the 2025-26 fiscal year. Total long-term obligations have decreased by \$21,762,269 over the past two years.

Average daily attendance has decreased by 4 ADA over the past two years. An additional decrease of 19 ADA is anticipated during the 2025-26 fiscal year.

*Available reserves consist of all unassigned fund balance within the General Fund.

**The actual amounts reported in this schedule are for the General Fund only, and do not agree with the amounts reported on the Statement of Revenues, Expenditures, and Changes in Fund Balances because the amounts on that schedule include the financial activity of the Special Reserve Fund for Other Than Capital Outlay Projects, the Special Reserve Fund for Postemployment Benefits, and the Retiree Benefits Fund, in accordance with the fund type definitions promulgated by GASB Statement No. 54.

**NEWPORT-MESA UNIFIED SCHOOL DISTRICT
RECONCILIATION OF ANNUAL FINANCIAL AND BUDGET REPORT WITH AUDITED FINANCIAL
STATEMENTS
FOR THE YEAR ENDED JUNE 30, 2025**

	General Fund	Special Reserve Fund for Other Than Capital Outlay Projects	Special Reserve Fund for Postemployment Benefits	Capital Facilities Fund
June 30, 2025, annual financial and budget report fund balance	\$ 99,226,966	\$ 31,883,038	\$ 155,734	\$ 2,405,763
Adjustments and reclassifications:				
Increase (decrease) in total fund balances:				
Accounts receivable	-	-	-	392,874
Fund balance transfer (GASB 54)	50,308,771	(31,883,038)	(155,734)	-
Net adjustments and reclassifications	50,308,771	(31,883,038)	(155,734)	392,874
June 30, 2025, audited financial statement fund balance	<u>\$ 149,535,737</u>	<u>\$ -</u>	<u>\$ -</u>	<u>\$ 2,798,637</u>

	Retiree Benefit Fund
June 30, 2025, annual financial and budget report net position	\$ 18,269,999
Adjustments and reclassifications:	
Increase (decrease) in total net position:	
Net position transfer (GASB 84 transfer)	(18,269,999)
Net adjustments and reclassifications	(18,269,999)
June 30, 2025, audited financial statement net position	<u>\$ -</u>

**NEWPORT-MESA UNIFIED SCHOOL DISTRICT
COMBINING BALANCE SHEET
JUNE 30, 2025**

	Student Activity Fund	Child Development Fund	Cafeteria Fund	Building Fund	Capital Facilities Fund	County School Facilities Fund	Bond Interest and Redemption Fund	Non-Major Governmental Funds
ASSETS								
Cash and investments	\$ 1,937,668	\$ 5,332,175	\$ 1,730,541	\$ 2,997,467	\$ 2,955,969	\$ 505,395	\$ 16,771,301	\$ 32,230,516
Accounts receivable	-	552,505	2,603,694	10,083	519,529	133,475	139,024	3,958,310
Due from other funds	-	168,490	736,117	-	-	-	-	904,607
Stores inventory	-	-	172,478	-	-	-	-	172,478
Total Assets	\$ 1,937,668	\$ 6,053,170	\$ 5,242,830	\$ 3,007,550	\$ 3,475,498	\$ 638,870	\$ 16,910,325	\$ 37,265,911
LIABILITIES								
Accrued liabilities	\$ -	\$ 516,950	\$ 744,746	\$ 289,328	\$ 676,861	\$ -	\$ -	\$ 2,227,885
Due to other funds	-	179,898	4,189,270	2,675,896	-	-	-	7,045,064
Unearned revenue	-	2,539,543	92,596	-	-	-	-	2,632,139
Total Liabilities	-	3,236,391	5,026,612	2,965,224	676,861	-	-	11,905,088
FUND BALANCES								
Nonspendable	-	-	172,478	-	-	-	-	172,478
Restricted	1,937,668	2,816,779	43,740	42,326	2,798,637	638,870	16,910,325	25,188,345
Total Fund Balances	1,937,668	2,816,779	216,218	42,326	2,798,637	638,870	16,910,325	25,360,823
Total Liabilities and Fund Balances	\$ 1,937,668	\$ 6,053,170	\$ 5,242,830	\$ 3,007,550	\$ 3,475,498	\$ 638,870	\$ 16,910,325	\$ 37,265,911

See accompanying notes to supplementary information.

**NEWPORT-MESA UNIFIED SCHOOL DISTRICT
COMBINING STATEMENT OF REVENUES, EXPENDITURES, AND CHANGES IN FUND BALANCES
FOR THE YEAR ENDED JUNE 30, 2025**

	Student Activity Fund	Child Development Fund	Cafeteria Fund	Building Fund	Capital Facilities Fund	County School Facilities Fund	Bond Interest and Redemption Fund	Non-Major Governmental Funds
REVENUES								
Federal sources	\$ -	\$ -	\$ 5,865,176	\$ -	\$ -	\$ -	\$ -	\$ 5,865,176
Other state sources	-	4,178,416	5,771,758	-	-	4,214,369	27,669	14,192,212
Other local sources	3,153,859	460,784	63,162	510,645	1,351,687	2,071,247	17,884,625	25,496,009
Total Revenues	3,153,859	4,639,200	11,700,096	510,645	1,351,687	6,285,616	17,912,294	45,553,397
EXPENDITURES								
Current								
Instruction	-	3,176,733	-	-	-	-	-	3,176,733
Instruction-related services								
Instructional supervision and administration	-	479,043	-	-	-	-	-	479,043
School site administration	-	145,634	-	-	-	-	-	145,634
Pupil services								
Food services	-	-	12,512,817	-	-	-	-	12,512,817
General administration								
All other general administration	-	231,770	451,093	-	10,884	-	-	693,747
Plant services	-	31,802	-	-	-	-	-	31,802
Facilities acquisition and construction	-	-	-	16,993,980	7,985,386	-	-	24,979,366
Ancillary services	2,868,736	-	-	-	-	-	-	2,868,736
Debt service								
Principal	-	-	-	-	-	-	9,474,891	9,474,891
Interest and other	-	-	-	-	2,341	-	7,220,564	7,222,905
Total Expenditures	2,868,736	4,064,982	12,963,910	16,993,980	7,998,611	-	16,695,455	61,585,674
Excess (Deficiency) of Revenues Over Expenditures	285,123	574,218	(1,263,814)	(16,483,335)	(6,646,924)	6,285,616	1,216,839	(16,032,277)
Other Financing Sources (Uses)								
Transfers in	-	168,103	700,000	-	-	-	-	868,103
Transfers out	-	-	-	-	-	(49,165,390)	-	(49,165,390)
Net Financing Sources (Uses)	-	168,103	700,000	-	-	(49,165,390)	-	(48,297,287)
NET CHANGE IN FUND BALANCE	285,123	742,321	(563,814)	(16,483,335)	(6,646,924)	(42,879,774)	1,216,839	(64,329,564)
Fund Balance - Beginning	1,652,545	2,074,458	780,032	16,525,661	9,445,561	43,518,644	15,693,486	89,690,387
Fund Balance - Ending	\$ 1,937,668	\$ 2,816,779	\$ 216,218	\$ 42,326	\$ 2,798,637	\$ 638,870	\$ 16,910,325	\$ 25,360,823

See accompanying notes to supplementary information.

**NEWPORT-MESA UNIFIED SCHOOL DISTRICT
NOTES TO SUPPLEMENTARY INFORMATION
JUNE 30, 2025**

NOTE 1 – PURPOSE OF SCHEDULES

Schedule of Expenditures of Federal Awards

The accompanying Schedule of Expenditures of Federal Awards includes the Federal grant activity of the District and is presented on the modified accrual basis of accounting. The information in this schedule is presented in accordance with the requirements of Title 2 U.S. *Code of Federal Regulations* Part 200, *Uniform Administrative Requirements, Cost Principles, and Audit Requirements for Federal Awards* (Uniform Guidance). Therefore, some amounts presented in this schedule may differ from amounts presented in, or used in the preparation of, the financial statements.

The District has not elected to use the de minimis indirect cost rate of not more than 15 percent.

Schedule of Average Daily Attendance (ADA)

Average daily attendance (ADA) is a measurement of the number of pupils attending classes of the District. The purpose of attendance accounting from a fiscal standpoint is to provide the basis on which apportionments of state funds are made to school districts. This schedule provides information regarding the attendance of students at various grade levels and in different programs.

Schedule of Instructional Time

This schedule presents information on the amount of instructional time offered by the District and whether the District complied with the article 8 (commencing with section 46200) of chapter 2 of part 26 of the *Education Code*.

Schedule of Financial Trends and Analysis

This schedule discloses the District's financial trends by displaying past years' data along with current year budget information. These financial trend disclosures are used to evaluate the District's ability to continue as a going concern for a reasonable period of time.

Reconciliation of Annual Financial and Budget Report with Audited Financial Statements

This schedule provides the information necessary to reconcile the fund balance of all funds reported on the Annual Financial and Budget Report Unaudited Actuals to the audited financial statements.

Combining Statements – Non-Major Funds

These statements provide information on the District's non-major funds.

OTHER INFORMATION

**NEWPORT-MESA UNIFIED SCHOOL DISTRICT
 LOCAL EDUCATION AGENCY ORGANIZATION STRUCTURE
 JUNE 30, 2025**

The Newport-Mesa Unified School District was established in 1966 and covers both the Newport and Costa Mesa areas of Orange County. The District operates 22 elementary schools, two middle schools, two 7-12 grade schools, two comprehensive high schools, one early college high school, two alternative education schools including both continuation and independent study, and one adult education school. There were no boundary changes during the year.

GOVERNING BOARD

Member	Office	Term Expires
Krista Weigand	President	2028
Leah Ersoylu	Vice President	2028
Michelle Murphy	Clerk	2026
Lisa Pearson	Member	2026
Ashley Anderson	Member	2026
Carol Crane	Member	2028
Vacant	Member	2026

DISTRICT ADMINISTRATORS

Dr. Wesley Smith
Superintendent

Dr. Kurt Suhr
Assistant Superintendent, Elementary Education

Kerrie Torres
Assistant Superintendent, Secondary Education

Socorro Shiels
Assistant Superintendent, Achievement, Innovation, and Continuous Improvement

Jeffrey Dixon
Assistant Superintendent, Chief Business Official

Tracy Knibb
Assistant Superintendent, Chief Human Resources Officer

Dr. Sara Jocham
Assistant Superintendent, Special Services

OTHER INDEPENDENT AUDITORS' REPORTS

**REPORT ON INTERNAL CONTROL OVER FINANCIAL REPORTING AND ON COMPLIANCE AND OTHER
MATTERS BASED ON AN AUDIT OF FINANCIAL STATEMENTS PERFORMED IN ACCORDANCE WITH
GOVERNMENT AUDITING STANDARDS**

Independent Auditors' Report

Governing Board
Newport-Mesa Unified School District
Costa Mesa, California

We have audited, in accordance with the auditing standards generally accepted in the United States of America and the standards applicable to financial audits contained in *Government Auditing Standards* issued by the Comptroller General of the United States, the financial statements of the governmental activities, each major fund, and the aggregate remaining fund information of Newport-Mesa Unified School District, as of and for the year ended June 30, 2025, and the related notes to the financial statements, which collectively comprise the Newport-Mesa Unified School District's basic financial statements, and have issued our report thereon dated January 28, 2026.

Report on Internal Control over Financial Reporting

In planning and performing our audit of the financial statements, we considered Newport-Mesa Unified School District's internal control over financial reporting (internal control) as a basis for designing audit procedures that are appropriate in the circumstances for the purpose of expressing our opinions on the financial statements, but not for the purpose of expressing an opinion on the effectiveness of Newport-Mesa Unified School District's internal control. Accordingly, we do not express an opinion on the effectiveness of Newport-Mesa Unified School District's internal control.

A deficiency in internal control exists when the design or operation of a control does not allow management or employees, in the normal course of performing their assigned functions, to prevent, or detect and correct, misstatements on a timely basis. A *material weakness* is a deficiency, or a combination of deficiencies, in internal control, such that there is a reasonable possibility that a material misstatement of the entity's financial statements will not be prevented, or detected and corrected, on a timely basis. A *significant deficiency* is a deficiency, or a combination of deficiencies, in internal control that is less severe than a material weakness, yet important enough to merit attention by those charged with governance.

Our consideration of internal control was for the limited purpose described in the first paragraph of this section and was not designed to identify all deficiencies in internal control that might be material weaknesses or significant deficiencies. Given these limitations, during our audit we did not identify any deficiencies in internal control that we consider to be material weaknesses. However, material weaknesses or significant deficiencies may exist that were not identified.

Report on Compliance and Other Matters

As part of obtaining reasonable assurance about whether Newport-Mesa Unified School District's financial statements are free from material misstatement, we performed tests of its compliance with certain provisions of laws, regulations, contracts, and grant agreements, noncompliance with which could have a direct and material effect on the financial statements. However, providing an opinion on compliance with those provisions was not an objective of our audit, and accordingly, we do not express such an opinion. The results of our tests disclosed no instances of noncompliance or other matters that are required to be reported under *Government Auditing Standards*.

Purpose of this Report

The purpose of this report is solely to describe the scope of our testing of internal control and compliance and the results of that testing, and not to provide an opinion on the effectiveness of the entity's internal control or on compliance. This report is an integral part of an audit performed in accordance with *Government Auditing Standards* in considering the entity's internal control and compliance. Accordingly, this communication is not suitable for any other purpose.

A handwritten signature in blue ink that reads "Christy White, Inc". The signature is written in a cursive, flowing style.

San Diego, California
January 28, 2026

**REPORT ON COMPLIANCE FOR EACH MAJOR FEDERAL PROGRAM; AND REPORT ON INTERNAL CONTROL
OVER COMPLIANCE REQUIRED BY THE UNIFORM GUIDANCE**Independent Auditors' Report

Governing Board
Newport-Mesa Unified School District
Costa Mesa, California

Report on Compliance for Each Major Federal Program***Opinion on Each Major Federal Program***

We have audited Newport-Mesa Unified School District's compliance with the types of compliance requirements identified as subject to audit in the *OMB Compliance Supplement* that could have a direct and material effect on each of Newport-Mesa Unified School District's major federal programs for the year ended June 30, 2025. Newport-Mesa Unified School District's major federal programs are identified in the summary of auditor's results section of the accompanying schedule of findings and questioned costs.

In our opinion, Newport-Mesa Unified School District complied, in all material respects, with the types of compliance requirements referred to above that could have a direct and material effect on each of its major federal programs for the year ended June 30, 2025.

Basis for Opinion on Each Major Federal Program

We conducted our audit of compliance in accordance with auditing standards generally accepted in the United States of America; the standards applicable to financial audits contained in *Government Auditing Standards*, issued by the Comptroller General of the United States; and the audit requirements of Title 2 U.S. *Code of Federal Regulations (CFR) Part 200, Uniform Administrative Requirements, Cost Principles, and Audit Requirements for Federal Awards* (Uniform Guidance). Our responsibilities under those standards and the Uniform Guidance are further described in the Auditor's Responsibilities for the Audit of Compliance section of our report.

We are required to be independent of Newport-Mesa Unified School District and to meet our other ethical responsibilities, in accordance with relevant ethical requirements relating to our audit. We believe that the audit evidence we have obtained is sufficient and appropriate to provide a basis for our audit opinion on compliance for each major federal program. Our audit does not provide a legal determination of Newport-Mesa Unified School District's compliance with the compliance requirements referred to above.

Responsibilities of Management for Compliance

Management is responsible for compliance with the requirements referred to above and for the design, implementation, and maintenance of effective internal control over compliance with the requirements of the laws, statutes, regulations, rules, and provisions of contracts or grant agreements applicable to Newport-Mesa Unified School District's federal programs.

Auditor's Responsibilities for the Audit for Compliance

Our objectives are to obtain reasonable assurance about whether material noncompliance with the compliance requirements referred to above occurred, whether due to fraud or error, and express an opinion on Newport-Mesa Unified School District's compliance based on our audit. Reasonable assurance is a high level of assurance but is not absolute assurance and therefore is not a guarantee that an audit conducted in accordance with generally accepted auditing standards, *Government Auditing Standards*, and the Uniform Guidance will always detect a material noncompliance when it exists. The risk of not detecting a material noncompliance resulting from fraud is higher than for one resulting from error, as fraud may involve collusion, forgery, intentional omissions, misrepresentations, or the override of internal control. Noncompliance with the compliance requirements referred to above is considered material if there is a substantial likelihood that, individually or in the aggregate, they would influence the judgment made by a reasonable user of the report on compliance about Newport-Mesa Unified School District's compliance with the requirements of each major federal program as a whole.

In performing an audit in accordance with generally accepted auditing standards and *Government Auditing Standards*, and the Uniform Guidance, we:

- Exercise professional judgment and maintain professional skepticism throughout the audit.
- Identify and assess the risks of material noncompliance, whether due to fraud or error, and design and perform audit procedures responsive to those risks. Such procedures include examining, on a test basis, evidence regarding Newport-Mesa Unified School District's compliance with compliance requirements referred to above and performing such other procedures as we considered necessary in the circumstances.
- Obtain an understanding of Newport-Mesa Unified School District's internal control over compliance relevant to the audit in order to design audit procedures that are appropriate in the circumstances and to test and report on internal control over compliance in accordance with the Uniform Guidance, but not for the purpose of expressing an opinion on the effectiveness of Newport-Mesa Unified School District's internal control over compliance. Accordingly, no such opinion is expressed.

We are required to communicate with those charged with governance regarding, among other matters, the planned scope and timing of the audit and any significant deficiencies and material weaknesses in internal control over compliance that we identified during the audit.

Report on Internal Control Over Compliance

A deficiency in internal control over compliance exists when the design or operation of a control over compliance does not allow management or employees, in the normal course of performing their assigned functions, to prevent, or detect and correct, noncompliance with a type of compliance requirement of a federal program on a timely basis. *A material weakness in internal control over compliance* is a deficiency, or combination of deficiencies, in internal control over compliance, such that there is a reasonable possibility that material noncompliance with a type of compliance requirement of a federal program will not be prevented, or detected and corrected, on a timely basis. *A significant deficiency in internal control over compliance* is a deficiency, or a combination of deficiencies, in internal control over compliance with a type of compliance requirement of a federal program that is less severe than a material weakness in internal control over compliance, yet important enough to merit attention by those charged with governance.

Report on Internal Control Over Compliance (continued)

Our consideration of internal control over compliance was for the limited purpose described in the Auditor's Responsibilities for the Audit of Compliance section above and was not designed to identify all deficiencies in internal control over compliance that might be material weaknesses or significant deficiencies in internal control over compliance. Given these limitations, during our audit we did not identify any deficiencies in internal control over compliance that we consider to be material weaknesses, as defined above. However, material weaknesses or significant deficiencies in internal control over compliance may exist that were not identified.

Our audit was not designed for the purpose of expressing an opinion on the effectiveness of internal control over compliance. Accordingly, no such opinion is expressed.

The purpose of this report on internal control over compliance is solely to describe the scope of our testing of internal control over compliance and the results of that testing based on the requirements of the Uniform Guidance. Accordingly, this report is not suitable for any other purpose.

A handwritten signature in blue ink that reads "Christy White, Inc". The signature is written in a cursive, flowing style.

San Diego, California
January 28, 2026

**REPORT ON STATE COMPLIANCE AND ON INTERNAL CONTROL OVER
COMPLIANCE FOR STATE PROGRAMS**Independent Auditors' Report

Governing Board
Newport-Mesa Unified School District
Costa Mesa, California

Report on State Compliance***Opinion on State Compliance***

We have audited Newport-Mesa Unified School District's compliance with the requirements specified in the *2024-2025 Guide for Annual Audits of K-12 Local Education Agencies and State Compliance Reporting* applicable to Newport-Mesa Unified School District's state program requirements as identified in the table in the Auditor's Responsibilities for the Audit of State Compliance section of our report for the year ended June 30, 2025.

In our opinion, Newport-Mesa Unified School District complied, in all material respects, with the laws and regulations of the applicable laws and regulations of the applicable state programs for the year ended June 30, 2025.

Basis for Opinion on State Compliance

We conducted our audit of compliance in accordance with auditing standards generally accepted in the United States of America; the standards applicable to financial audits contained in *Government Auditing Standards*, issued by the Comptroller General of the United States; and the *2024-2025 Guide for Annual Audits of K-12 Local Education Agencies and State Compliance Reporting* (the K-12 Audit Guide). Our responsibilities under those standards are further described in the Auditor's Responsibilities for the Audit of State Compliance section of our report.

We are required to be independent of Newport-Mesa Unified School District and to meet our other ethical responsibilities, in accordance with relevant ethical requirements relating to our audit. We believe that the audit evidence we have obtained is sufficient and appropriate to provide a basis for our opinion. Our audit does not provide a legal determination of Newport-Mesa Unified School District's compliance with the compliance requirements referred to above.

Responsibilities of Management for Compliance

Management is responsible for compliance with the requirements referred to above and for the design, implementation, and maintenance of effective internal control over compliance with the requirements of the laws, statutes, regulations, rules, and provisions of contracts or grant agreements applicable to Newport-Mesa Unified School District's state programs.

Auditor’s Responsibilities for the Audit of State Compliance

Our objectives are to obtain reasonable assurance about whether material noncompliance with the state compliance requirements referred to above occurred, whether due to fraud or error, and express an opinion on Newport-Mesa Unified School District's compliance based on our audit. Reasonable assurance is a high level of assurance but is not absolute assurance and therefore is not a guarantee that an audit conducted in accordance with generally accepted auditing standards, *Government Auditing Standards*, and the K-12 Audit Guide will always detect a material noncompliance when it exists. The risk of not detecting a material noncompliance resulting from fraud is higher than for that resulting from error, as fraud may involve collusion, forgery, intentional omissions, misrepresentations, or the override of internal control. Noncompliance with the compliance requirements referred to above is considered material if there is a substantial likelihood that, individually or in the aggregate, it would influence the judgment made by a reasonable user of the report on compliance about Newport-Mesa Unified School District's compliance with the requirements of the applicable state programs as a whole.

In performing an audit in accordance with generally accepted auditing standards and *Government Auditing Standards*, and the K-12 Audit Guide, we:

- Exercise professional judgment and maintain professional skepticism throughout the audit;
- Identify and assess the risks of material noncompliance, whether due to fraud or error, and design and perform audit procedures responsive to those risks. Such procedures include examining, on a test basis, evidence regarding Newport-Mesa Unified School District's compliance with compliance requirements referred to above and performing such other procedures as we considered necessary in the circumstances;
- Obtain an understanding of Newport-Mesa Unified School District's internal control over compliance relevant to the audit in order to design audit procedures that are appropriate in the circumstances and to test and report on internal control over compliance in accordance with the K-12 Audit Guide, but not for the purpose of expressing an opinion on the effectiveness of Newport-Mesa Unified School District's internal control over compliance. Accordingly, we express no such opinion; and
- Select and test transactions and records to determine Newport-Mesa Unified School District's compliance with the state laws and regulations applicable to the following items:

<u>PROGRAM NAME</u>	<u>PROCEDURES PERFORMED</u>
Local Education Agencies Other Than Charter Schools	
Attendance	Yes
Teacher Certification and Misassignments	Yes
Independent Study	No
Continuation Education	Yes
Instructional Time	Yes
Instructional Materials	Yes
Ratio of Administrative Employees to Teachers	Yes
Classroom Teacher Salaries	Yes
Early Retirement Incentive	Not Applicable
Gann Limit Calculation	Yes
School Accountability Report Card	Yes
Juvenile Court Schools	Not Applicable
Middle or Early College High Schools or Programs	Yes
K-3 Grade Span Adjustment	Yes
Apprenticeship: Related and Supplemental Instruction	Not Applicable
Comprehensive School Safety Plan	Yes
District of Choice	Not Applicable
Home to School Transportation Reimbursement	Yes

Auditor’s Responsibilities for the Audit of State Compliance (continued)

PROGRAM NAME	PROCEDURES PERFORMED
School Districts, County Offices of Education, and Charter Schools	
Proposition 28 Arts and Music in Schools	Yes
After/Before School Education and Safety Program	Yes
Proper Expenditure of Education Protection Account Funds	Yes
Unduplicated Local Control Funding Formula Pupil Counts	Yes
Local Control and Accountability Plan	Yes
Independent Study-Course Based	Not Applicable
Immunizations	Yes
Educator Effectiveness	Yes
Expanded Learning Opportunities Grant (ELO-G)	Yes
Career Technical Education Incentive Grant	Yes
Expanded Learning Opportunities Program	Yes
Transitional Kindergarten	Yes
Kindergarten Continuance	Yes
Charter Schools	
Attendance; for charter schools	Not Applicable
Mode of Instruction; for charter schools	Not Applicable
Nonclassroom-Based Instruction/Independent Study; for charter schools	Not Applicable
Determination of Funding for Nonclassroom-Based Instruction; for charter schools	Not Applicable
Annual Instructional Minutes - Classroom Based	Not Applicable
Charter School Facility Grant Program	Not Applicable

We did not perform testing for Independent Study because total ADA reported was below the threshold required for testing.

The term “Not Applicable” is used above to mean either the District did not offer the program during the current fiscal year, the District did not participate in the program during the current fiscal year, or the program applies to a different type of local education agency.

We are required to communicate with those charged with governance regarding, among other matters, the planned scope and timing of the audit and any significant deficiencies and material weaknesses in internal control over compliance that we identify during the audit.

Other Matters

The results of our auditing procedures disclosed instances of noncompliance, which are described in the accompanying schedule of findings and questioned costs as Findings #2025-001, #2025-002, and #2025-003. Our opinion on state compliance is not modified with respect to these matters.

Government Auditing Standards requires the auditor to perform limited procedures on Newport-Mesa Unified School District’s response to the noncompliance findings identified in our audit and described in the accompanying schedule of findings and questioned costs. Newport-Mesa Unified School District’s response was not subjected to the auditing procedures applied in the audit of compliance and, accordingly, we express no opinion on the response.

Report on Internal Control Over Compliance

A deficiency in internal control over compliance exists when the design or operation of a control over compliance does not allow management or employees, in the normal course of performing their assigned functions, to prevent, or detect and correct, noncompliance on a timely basis. A material weakness in internal control over compliance is a deficiency, or combination of deficiencies, in internal control over compliance, such that there is a reasonable possibility that a material noncompliance with a compliance requirement will not be prevented, or detected and corrected, on a timely basis. A significant deficiency in internal control over compliance is a deficiency, or a combination of deficiencies, in internal control over compliance that is less severe than a material weakness in internal control over compliance, yet important enough to merit attention by those charged with governance.

Our consideration of internal control over compliance was for the limited purpose described in the Auditor's Responsibilities for the Audit of State Compliance section and was not designed to identify all deficiencies in internal control over compliance that might be material weaknesses or significant deficiencies in internal control over compliance. Given these limitations, during our audit we did not identify any deficiencies in internal control over compliance that we consider to be material weaknesses, as defined above. However, material weaknesses or significant deficiencies in internal control over compliance may exist that were not identified.

Our audit was not designed for the purpose of expressing an opinion on the effectiveness of internal control over compliance. Accordingly, no such opinion is expressed.

The purpose of this report on internal control over compliance is solely to describe the scope of our testing of internal control over compliance and the results of that testing based on the requirements of the K-12 Audit Guide. Accordingly, this report is not suitable for any other purpose.



San Diego, California
January 28, 2026

SCHEDULE OF FINDINGS AND QUESTIONED COSTS

**NEWPORT-MESA UNIFIED SCHOOL DISTRICT
SUMMARY OF AUDITORS' RESULTS
FOR THE YEAR ENDED JUNE 30, 2025**

FINANCIAL STATEMENTS

Type of auditors' report issued:	<u>Unmodified</u>
Internal control over financial reporting:	
Material weakness(es) identified?	<u>No</u>
Significant deficiency(ies) identified?	<u>None Reported</u>
Non-compliance material to financial statements noted?	<u>No</u>

FEDERAL AWARDS

Internal control over major program:	
Material weakness(es) identified?	<u>No</u>
Significant deficiency(ies) identified?	<u>None Reported</u>
Type of auditors' report issued:	<u>Unmodified</u>
Any audit findings disclosed that are required to be reported in accordance with Uniform Guidance 2 CFR 200.516(a)?	<u>No</u>
Identification of major programs:	

<u>AL Number(s)</u>	<u>Name of Federal Program or Cluster</u>
<u>84.010</u>	<u>Title I, Part A</u>
<u>84.027, 84.027A, 84.173</u>	<u>Special Education Cluster</u>

Dollar threshold used to distinguish between Type A and Type B programs:	<u>\$ 750,000</u>
Auditee qualified as low-risk auditee?	<u>Yes</u>

STATE AWARDS

Internal control over state programs:	
Material weaknesses identified?	<u>No</u>
Significant deficiency(ies) identified?	<u>None Reported</u>
Any audit findings disclosed that are required to be reported in accordance with 2024-25 Guide for Annual Audits of California K-12 Local Education Agencies ?	<u>Yes</u>
Type of auditors' report issued on compliance for state programs:	<u>Unmodified</u>

**NEWPORT-MESA UNIFIED SCHOOL DISTRICT
FINANCIAL STATEMENT FINDINGS
FOR THE YEAR ENDED JUNE 30, 2025**

FIVE DIGIT CODE

20000
30000

AB 3627 FINDING TYPE

Inventory of Equipment
Internal Control

There were no financial statement findings for the year ended June 30, 2025.

**NEWPORT-MESA UNIFIED SCHOOL DISTRICT
FEDERAL AWARD FINDINGS AND QUESTIONED COSTS
FOR THE YEAR ENDED JUNE 30, 2025**

FIVE DIGIT CODE

50000

AB 3627 FINDING TYPE

Federal Compliance

There were no federal award findings or questioned costs for the year ended June 30, 2025.

**NEWPORT-MESA UNIFIED SCHOOL DISTRICT
STATE AWARD FINDINGS AND QUESTIONED COSTS
FOR THE YEAR ENDED JUNE 30, 2025**

FIVE DIGIT CODE

10000
40000
42000
43000
60000
61000
62000
70000
71000
72000

AB 3627 FINDING TYPE

Attendance
State Compliance
Charter School Facilities Programs
Apprenticeship: Related and Supplemental Instruction
Miscellaneous
Classroom Teacher Salaries
Local Control Accountability Plan
Instructional Materials
Teacher Misassignments
School Accountability Report Card

FINDING #2025-001: INSTRUCTIONAL MATERIALS (70000)

Criteria: Per Education Code Section 60119, the public hearing for instructional materials must occur on or before the end of the eighth week from the first day pupils attended school for that year.

Condition: The District’s public hearing for instructional materials occurred on October 15, 2024, which is after the eighth week from the first day of the school year.

Cause: District oversight.

Effect: The District is not in compliance with California Education Code Section 60119.

Questioned Costs: No questioned costs.

Repeat Finding: This is not a repeat finding.

Recommendation: We recommend that the District comply with Education Code Section 60119 in the future and ensure that the public hearing for instructional materials occurs on or before the end of the eighth week from the first day pupils attended school for that year.

Corrective Action Plan: The public hearing for instructional materials will be held in September of each year to ensure that it occurs before the end of the eighth week of instruction.

FINDING #2025-002: EXPANDED LEARNING OPPORTUNITIES PROGRAM (40000)

Criteria: Pursuant to California Education Code Section 46120 (B) 30 non-school days are required inclusive of extended school year days provided pursuant to paragraph (3) of subdivision (b) of Section 56345, no fewer than nine hours of in-person expanded learning opportunities per day.

Condition: Based on our review of the Extended Learning Opportunities Program operating documentation, we noted that the program only operated 20 of the required 30 non-school days.

**NEWPORT-MESA UNIFIED SCHOOL DISTRICT
STATE AWARD FINDINGS AND QUESTIONED COSTS, continued
FOR THE YEAR ENDED JUNE 30, 2025**

FINDING #2025-002: EXPANDED LEARNING OPPORTUNITIES PROGRAM (40000) (continued)

Effect: The District was not in compliance with the related sections of Education Code.

Questioned Costs: \$396,337, as calculated below:

Calculating the Cost of ELO-P Audit Finding	School District Data Input and Calculated Fields
LEA Funding Rate	Rate 2
ELO-P Entitlement Calculation based on Rate 1 or Rate 2	\$8,257,024
Section A - Offering and Access	
Total Classroom-Based Enrollment, Grades TK/K-6	
Total Classroom-Based UPC, Grades TK/K-6	-
Students Eligible for ELO-P Offering and Access (Rate 1 = Item Number 3, Rate 2 = Item Number 4)	-
Number of Eligible Students Not Offered and Provided Access to ELO-P	0
Proportional Penalty Factor	0.000000
ELO-P Offering and Access Penalty pursuant to <i>Education Code</i> Section 6120(c)(2)	\$0
Section B - Days	
Instructional Days	180
ELO-P offered on instructional days totaling 9 hours	180
Required Intersession ELO-P days	30
Actual ELO-P intersession days totaling 9 hours	20
ELO-P days short	10
Penalty Factor	0.0048
Penalty Calculation	\$396,337
Total Penalty	\$396,337

Cause: Administrative oversight.

Repeat Finding: This is not a repeat finding.

Recommendation: We recommend the District offer the Expanded Learning Opportunities Program (ELOP) on 30 non-school days.

Corrective Action Plan: After careful consideration, the district has determined that it will assume responsibility for the associated penalty for not operating the full 30 days. This decision was made based on a cost-benefit analysis, as the financial penalty is significantly lower than the cost of operating the program for the full duration. Additionally, the impact of extended operations—including increased wear and tear on school facilities and infrastructure—was an important factor in this decision.

Please note that this determination was made at the district level and reflects a strategic approach to balancing fiscal responsibility, operational capacity, and site sustainability.

**NEWPORT-MESA UNIFIED SCHOOL DISTRICT
STATE AWARD FINDINGS AND QUESTIONED COSTS, continued
FOR THE YEAR ENDED JUNE 30, 2025**

FINDING #2025-003: CLASSROOM TEACHER SALARIES (61000)

Criteria: In accordance with the requirements of California Education Code Section 41372, pursuant to the provisions of California Education Code Section 41374, determine whether, after applicable audit adjustments, the district met the current expense of education percentage requirements for expenditure for payment of salaries of classroom teachers as set forth in California Education Code Section 41372.

Condition: For the current year after applicable audit adjustments, the District did not meet the current expense of education percentage requirements for expenditure for payment of salaries of classroom teachers as set forth in California Education Code Section 41372. For unified school districts, the minimum percentage required is 55%. The District's current expense of education for the year audited was \$461,823,749, and the dollar amount by which the District was deficient was \$20,089,333.

Effect: As a result of our testing, the District does not appear to be in compliance with current expense of education percentage requirements for expenditure for payment of salaries of classroom teachers as set forth in California Education Code Section 41372.

Cause: It is possible that the significant sources of new funding from state and federal sources contributed to the percentage requirement not being met. Many of these one-time funding sources were not eligible for exclusion from the calculation.

Questioned Costs: There are no questioned costs associated with this condition.

Repeat Finding: No.

Recommendation: We recommend that in the future, the District monitor their expenses towards salaries of classroom teachers against their total expenses to be sure that they meet the 55% minimum requirement.

Corrective Action Plan: The spending down of one-time funds has contributed to the percentage of classroom expenses falling below the required threshold. The district is working with the Orange County Department of Education (OCDE) to obtain a waiver for the 2024-25 fiscal year based on the assertion that the payment of classroom teacher salaries that are in excess of those paid by other comparable districts. Moving forward, the district will work to align expenditures to meet the requirements in the future.

**NEWPORT-MESA UNIFIED SCHOOL DISTRICT
SUMMARY SCHEDULE OF PRIOR AUDIT FINDINGS
FOR THE YEAR ENDED JUNE 30, 2025**

There were no findings or questioned costs for the year ended June 30, 2024.