

# **Executive Committee Meeting**

## **Reorganization Update Agenda Item 8A**

**February 25, 2026**

# **A New Way of Supporting Students**

## **TrueNorth Educational Cooperative 804**



***Committed to the possibilities in every learner, every day***

# FY27 TrueNorth Educational Cooperative 804



**Therapeutic  
Day School  
Campus  
Programs and  
Services**



**Transition  
Program**



**Early  
Childhood  
Programs**

# Therapeutic Day School Campus Programs and Services



## North Shore Academy

- Will provide a three building therapeutic campus that serves students kindergarten through age 22
- A unified, blended approach that prioritizes student needs rather than program name
- This shift reflects our commitment to creating classrooms that are supportive by design—not dependent on constant individual adult proximity
- Belief that rigor and relationships coexist and that academic excellence and emotional well-being are inseparable in creating compassionate, responsive, and impactful learning environments
- TrueNorth Instructional Framework serves as a shared guide for ensuring every learner is seen, supported, and successful

# North Shore Academy Goals



## Reintegration

For all students, the goal is reintegation into their home school.

---



## Individualized

This process is individualized to meet the needs of each student, family, and the receiving team.

---



## Family Partnership

Families remain essential partners throughout the IEP process



## Wraparound Support

This wraparound support focuses on a positive, proactive process to ensure a successful transition to the home district.

---



## Support Services

Support services are delivered within the classroom community, allowing students to build skills while participating fully in learning.

---



## Staffing Model

This staffing model reflects best practices in therapeutic education and prepares students for long-term success.



# North Shore Academy

The TrueNorth Therapeutic Day School model is structured into five distinct grade-level pods with a budgeted ADE of 130

# North Shore Academy

## Instructional Pods

### Pod 3:

**6th - 8th Grade**

**Enrolling: 38 students**

### Pod 2:

**4th - 5th Grade**

**Enrolling: 22 students**

### Pod 1:

**Kinder - 3rd Grade**

**Enrolling: 22 students**

### Pod 4:

**9th - 12th Grade**

**Enrolling: 42 students**

### Pod 5:

**Transition**

**Enrolling: 6 students**



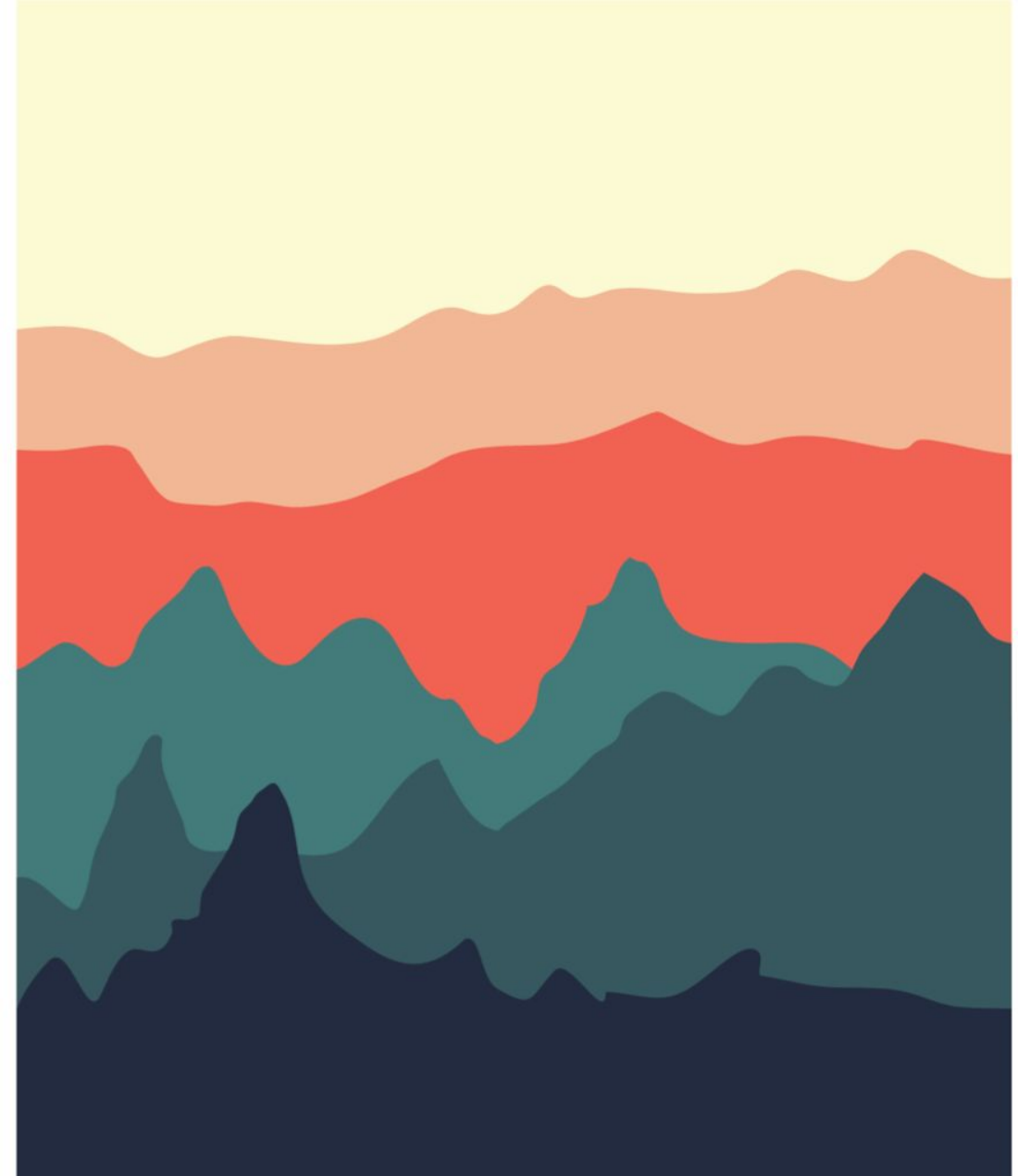
**Budgeted ADE = 130**



# Staffing and Focus Areas

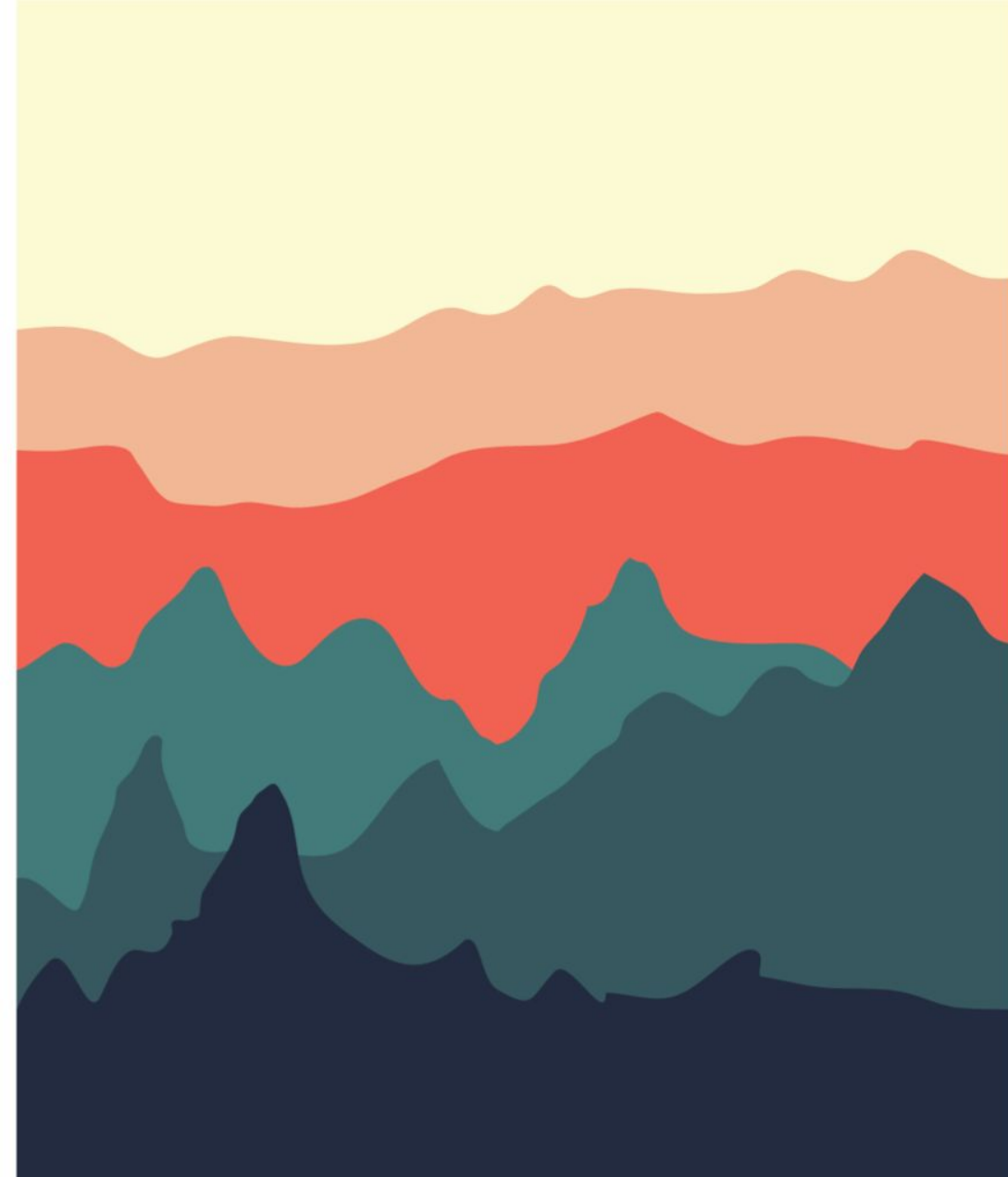
## Pod 1 & 2: Kindergarten - 5th Grade

- Each pod is assigned a dedicated therapist, while teachers serve as case managers
- To address individual student needs, each classroom is staffed with 2-3 classroom assistants
- Leadership Team: Instructional Coordinator, School Psychologist, and Instructional Coach
  - Will work closely with teachers and “pod-specific” therapists
  - Will oversee daily instruction to personalized behavioral plans



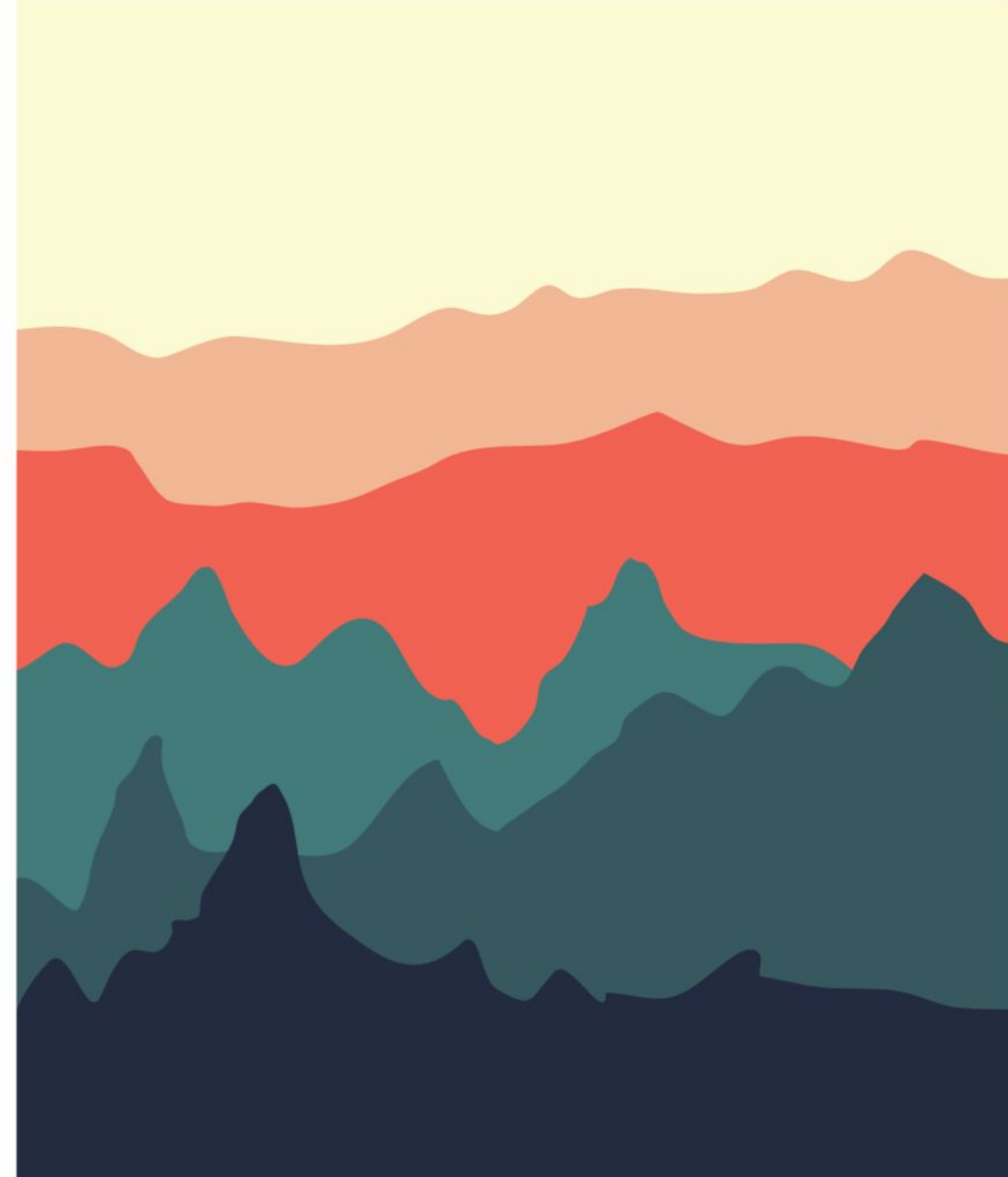
## Pod 1 & 2: Kindergarten - 5th Grade (continued)

- Belief in related services delivered in the natural environment allows students to stay engaged in their environment while they learn vital school behaviors, self-regulation, and grade-aligned academic content



## Pod 1 & 2: Kindergarten - 5th Grade (continued)

- A suite of evidence-based curricula designed to bridge the gap between foundational skills and grade-level standards
- Instructional materials are selected for their systematic and explicit approaches to learning
- **Focus Areas:** Literacy, Math, Social Studies and Science, Electives, Therapeutic Supports, Behavioral Supports, and Assessment





## Pod 3: 6th - 8th Grade

- Intervention specialist/therapist takes on the role of the case manager
- Teachers serve as content specialists in their designated subjects
- Therapists support teachers with an increased focus on students' mental health needs coupled with 1:1 student therapy services when needed
- Additional team members include school counselor and the transition and vocational staff focusing on transition plans and Career Technical Education (CTE)
- **Focus Areas:** Literacy, Math, Social Studies and Science, Electives, Therapeutic Supports, Behavioral Supports, and Assessment/Student Growth



## Pod 4 & 5: High School / Transition

- At NSA High School, mental health and social-emotional well-being are central to the work
- The program is intentionally designed to prioritize emotional wellness as a critical foundation for academic engagement and success
- With a caseload of nine students per intervention specialist or therapist, staff provide individualized, intensive support throughout the school day
- This therapeutic framework enables students to meaningfully access instruction, progress toward graduation requirements, and engage in elective coursework aligned with their postsecondary goals

# Pod 4 & 5: High School / Transition (continued)

- **NSA Transition** offers students the opportunity to continue working on their transition goals after completing high school credit-bearing requirements
- This provides additional access to learning opportunities in the community and in vocational settings
- **Focus Areas: Curriculum**  
The NSA curriculum is designed to reflect the material covered in a student's home school and is aligned with state educational standards





# Pod 4 & 5: High School / Transition (continued)

- Students continue to earn credits that are applied directly to their home school transcript and count toward their home school's graduation requirements
- Upon graduation, students receive their official diploma from their home school
- NSA maintains a balance between rigorous academic programming and individualized support tailored to students' social-emotional needs
- Instruction is thoughtfully adapted with appropriate accommodations to foster both academic skill development and emotional growth
- Classrooms are equipped with state-of-the-art technology, empowering educators to create engaging, innovative, and challenging learning experiences that support diverse learners
- Each high school course is organized into instructional units aligned with identified state priority standards



# Therapeutic Services Overview



# Therapeutic Services Overview

- NSA High School provides a comprehensive, integrated approach that supports students' social-emotional growth alongside their academic development
- Therapeutic services are embedded throughout the school day to ensure consistent, individualized support
- Students participate in regularly scheduled individual therapy sessions focused on building coping skills, emotional regulation, problem-solving strategies, and goal setting
- Students engage in structured group therapy to develop social skills, communication, perspective-taking, and executive functioning
- Groups may focus on process-oriented discussion, skill-building, or thematic topics aligned with student needs



# Therapeutic Services Overview (continued)

- Staff utilize a collaborative problem-solving approach to proactively address challenges
- Students are actively involved in identifying concerns, generating solutions, and building independence in managing difficult situations
- Students have access to speech and language services and occupational therapy when identified in their IEP
- These services are integrated into the school day to support communication, sensory regulation, fine motor development, and overall functional performance
- Through this comprehensive therapeutic framework, students receive coordinated support that promotes emotional growth, skill development, and successful reintegration into less restrictive educational settings



# **Course Selection & On-Time Graduation Supports**



# Course Selection & On-Time Graduation Supports

- NSA high school students participate in annual meetings with the school counselor to review academic progress, including grades, transcripts, and credits earned toward graduation, and to select courses for the upcoming school year
- In collaboration with the teacher/therapist team, transition counselors, district representatives, and related service providers, the school counselor continuously monitors each student's academic performance and progress toward district-specific graduation requirements
- Any potential concerns are promptly communicated to the student, case manager, and district representative to ensure timely support and intervention

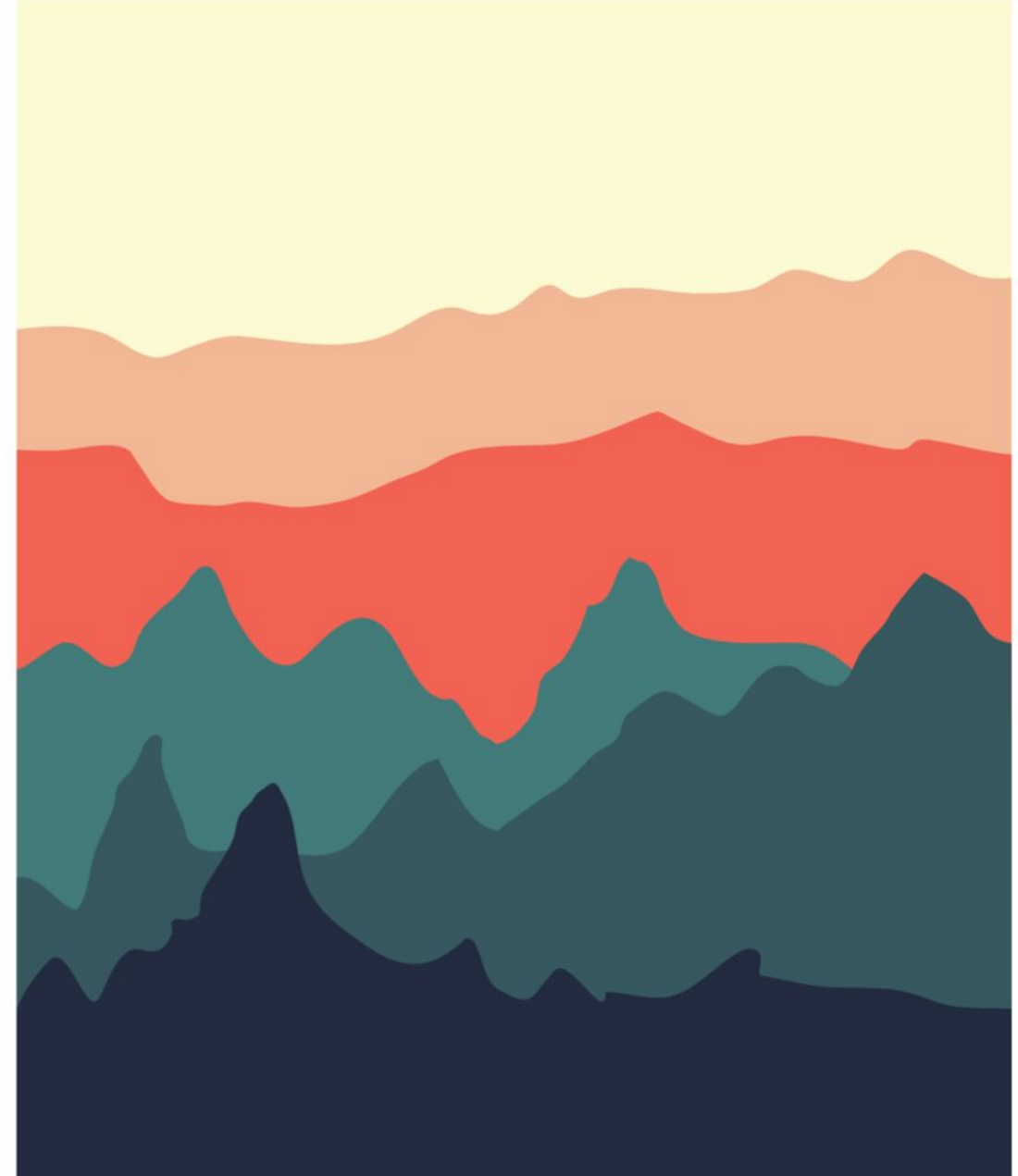


## Exploration of a High School Campus

- **Goal:** Reconfigure/relocate students to form a dedicated high school community
- **Potential Site:** Rubloff Building toured; under evaluation for suitability
- **Consultation:** Met with GreenAssociates Architects on Feb. 10; reviewed design and infrastructure needs
- **Timeline Challenge:** Late in the school year; full implementation may be difficult
- **Major Obstacles:** Plumbing and fixtures require significant attention/upgrades

# Staffing

- The multidisciplinary team includes licensed Social Workers, Board Certified Behavior Analysts (BCBA), and Speech-Language Pathologists (SLP)
- The team provides individualized counseling, social-emotional instruction, and functional communication training integrated throughout a student's day
- Staffed with a comprehensive and collaborative team, utilizing a variety of specialized roles to ensure a holistic and successful experience for every student
- An interdisciplinary teaming approach is central to ensuring optimal outcomes and sustained success for students as they navigate their postsecondary pathways





# TrueNorth Early Childhood Programs



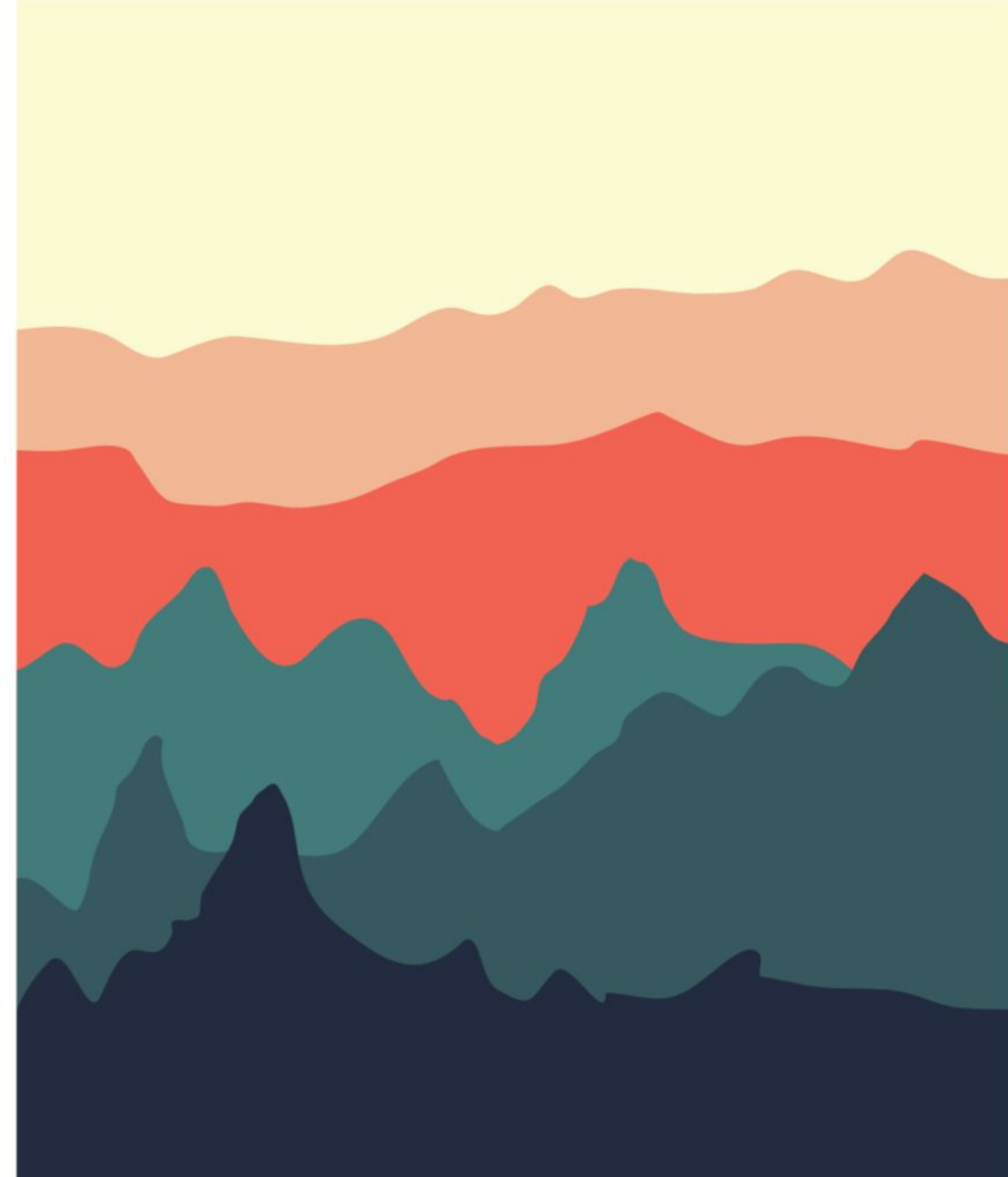
- 
- TrueNorth Early Childhood Programs
  - Early Childhood Partnership Program
  - Early Childhood Extended Blended Program
  - Related services, including speech-language therapy, occupational therapy, physical therapy, and other supports, are embedded within the child's school day within natural routines and activities



# Community Engagement

# Community Engagement / Town Hall Meetings - April 2026

- Provide accurate information about the Therapeutic Day School Campus
- Create space for parent and community voice
- Outline next steps and timelines
- Strengthen partnership between families and the TrueNorth community



TRUE**N****ORTH**<sup>®</sup>  
EDUCATIONAL COOPERATIVE 804