



Planning For Growth

A Strategic Vision for Buckeye Valley Local Schools

February 26, 2026



Welcome & Facilities Meeting Overview

Ric Stranges

Superintendent,

Buckeye Valley Local Schools



Every decision is guided by our commitment to students and our community.

These principles drive every decision we make for our growing District.



Safety & Security for all Stakeholders

Ensuring a secure and protected environment for all students, staff, and community members, prioritizing their well-being in every aspect of our operations.



Academic Excellence for all Students

Committing to rigorous, innovative, and high-quality education for every student, fostering critical thinking, creativity, and lifelong learning.



Opportunities for all Learners

Providing diverse pathways and inclusive programs that cater to the unique needs, interests, and aspirations of every learner, unlocking their full potential.



Fiscal Responsibility

Managing resources with transparency, integrity, and accountability to ensure long-term financial health and sustainability for the benefit of our district and community.



Facilities Committee Meeting Overview



THE VISION

Lifelong Learning and Wellness for all BVLS Stakeholders



K-12 Students



Seniors & Alumni



Industry Partners



THE FACILITIES

Flexible and Evolving Learning Centers For All Learning Pathways



Our Work

We have established the *what* and the *why* of our capacity challenge.

What does Phase 2 look like?



High School



Athletics, Arts, Bus Garage, Land Acquisition



Lifelong Learning & Continuing Education



Other Facility Needs

Who is this building for?



All Stakeholders



Community & Business Partners



Evolving Space that meets the needs of our BVLS Community

When do we go on the Ballot?



Timeline



Goal: To make a recommendation to the Superintendent

The Framework We Have Followed



Looked at Enrollment and Capacity in the District



Prioritized the facility needs and reviewed the need for a new High School



Collected Feedback from the community



Ready to make a Final Recommendation



The Next Step: Your Recommendation

Each of you will make an individual Recommendation to the Superintendent this evening



Timeline--When do we put the Bond Issue on the Ballot



What is included in the bond issue

Fact Sheet: Buckeye Valley Growth & Facilities Needs

Current Enrollment Snapshot



As of early 2026, the total PK-12 enrollment is **2,553** students.

The "Capacity Challenge"



Enrollment is projected to grow by **670 students** (roughly 30%) over the next decade.

The High School Surge



2027-2028 school year

The most significant pressure:



The most significant pressure begins that been optidation larges the students expected to jump from **700 to 772** students as the first "large class" of 200+ students enters.

Primary Facilities Goals (Phase 2)



New High School:
Constructing a modern facility for 21st-century learning



Elementary Relief:
Building new elementary space to alleviate current overcrowding.



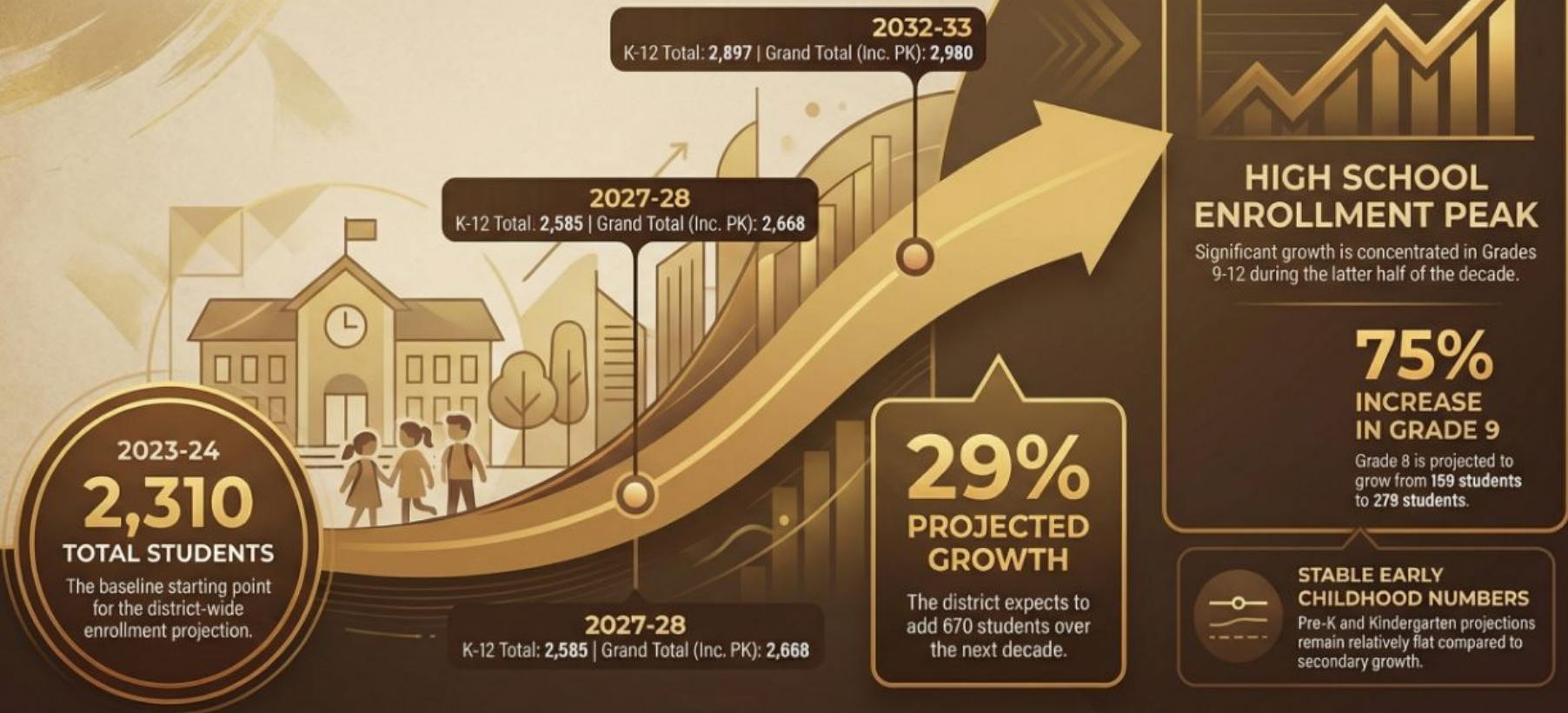
Supporting Infrastructure:
Updated and relocated Transportation Center and strategic land acquisition.



Community Wellness:
Optimizing shared spaces for Athletics, Arts, and Lifelong Learning.

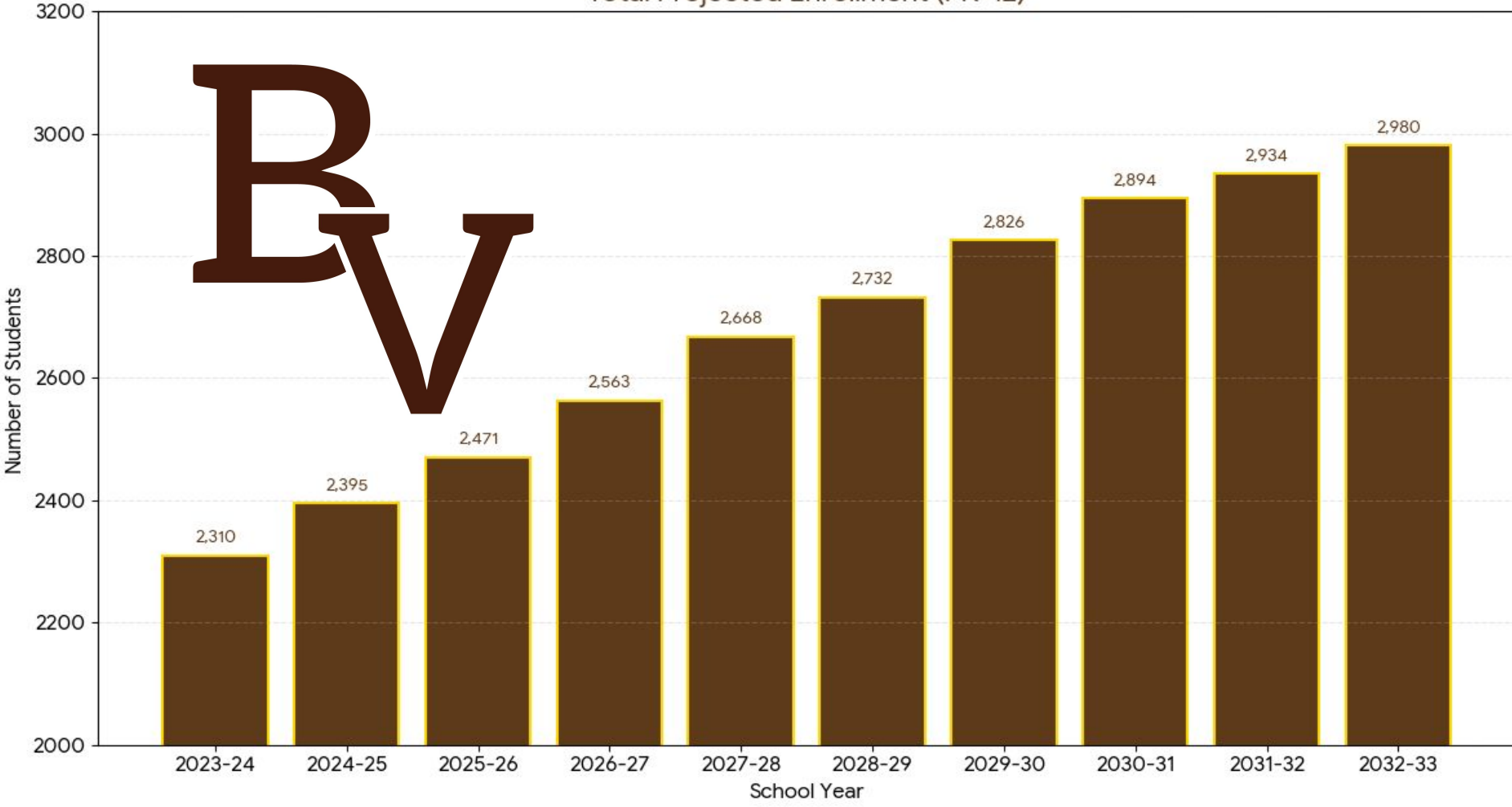
A Decade of Growth:

District-Wide Enrollment Projections (2023-2033)



Total Projected Enrollment (PK-12)




BV



RV This growth is creating critical capacity challenges, with key schools projected to exceed optimal capacity before 2030.

Our 5-Year Capacity Outlook

School Facility	Current Capacity	2025-26 Status	2027-28 Status	2029-30 Outlook
East Elementary	500	75%	84%	Approaching/ Exceeding*
West Elementary	650	91%	94%	94%
Middle School	750 → 1,175	98%	65%	71%
High School	800	81%	92%	98%

 Below 85% Capacity  85%-95% Capacity (Strained)  Over 95% Capacity (Action Required)





East Elementary and the High School are on clear trajectories to exceed optimal capacity before 2030, requiring immediate strategic focus.

**East Elem. outlook considers the impact of 900+ zoned housing units not yet reflected in baseline projections.*

High School Enrollment Projection Review

Buckeye Valley Local Schools: High School Enrollment Projection

The following chart highlights the “large classes” (defined as those with 200+ students) that will be entering Buckeye Valley High School over the next four years.

School Year	Grade 9 	Grade 10 	Grade 11 	Grade 12 	Total HS
2026-2027	199	164	187	150	560
2027-2028	231	195	160	186	772
2028-2029	225	225	190	159	799
2029-2030	207	220	220	189	836

Key Observations:



Total Growth: Enrollment is projected to increase by 670 students (approx. 30%) over the 10-year period.



High School Surge: Significant growth is noted in the upper grades in later years. For example, Grade 9 enrollment is projected to jump from 190 (current) to 279 by 2032-33.

Why Now?: Cost & Timing Analysis

For a new 1,200-student high school in Ohio, the total gross square footage is approximately 198,000 sq., with a total project cost ranging from \$75 million to \$86 million based on current state construction guidelines.



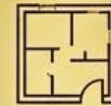
Estimated Square Footage

Allowance per Student: 165 sq. ft.
Total Gross Square Feet (GSF): ~198,000 sq. ft.
Recommended Site Size: At least 47 acres (35-acre baseline + 1 acre per 100 students).



Potential Project Costs (2024–2025)

Cost per Square Foot: Approximately \$385 to \$434
Total Estimated Cost: \$76 million to \$85.9 million.
Note: Recent projects (e.g., Olentangy Schools) have seen costs rise to \$148 million due to inflation.



Cost & Space Breakdown

Academic Core: ~52,072 sq. ft.
Physical Education: ~28,770 sq. ft.
Student Dining: ~12,530 sq. ft.
Media Center: ~6,820 sq. ft.
Special Education: ~4,400 sq. ft.
Building Services/Circulation: ~42,640 sq. ft.



Why Now?: Cost & Timing Analysis

Pros



Financial

Long-term Financing: Spreads the cost of major construction over 12–30 years, reducing the immediate annual tax impact.



Infrastructure

Modernization: Funds new buildings, safety upgrades, and major repairs that operating budgets cannot cover. Materials Cost will continue to rise.



Community

Enrollment Management: Addresses overcrowding and aging facilities to maintain educational standards.



Enrollment Growth

Growth is Now: Passing a local bond for the High School is a proactive approach as the 4 largest grade levels will be at the High School within 4 years. If we wait, we will need a new High School and an additional elementary building for enrollment needs.

Cons



Financial

Interest Costs: Because bonds are essentially loans, they end up costing more than the base project price due to interest.



Infrastructure

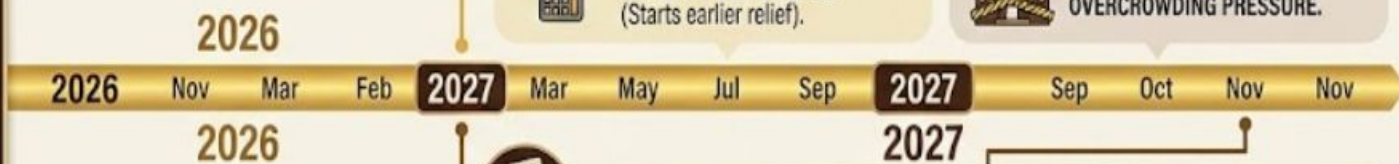
Operating Costs: New or larger buildings may lead to higher ongoing maintenance and utility costs. Materials Cost will continue to rise.



Community

Property Tax Burden: Can significantly increase property tax bills at a time when many residents are already concerned about rising valuations.

PROS & CONS OF BOND ISSUE ISSUE TIMING: BUCKEYE VALLEY LOCAL SCHOOLS



**BALLOT DATE:
NOVEMBER 2026**

PROS (EARLY RELIEF)



ADDRESSES IMMEDIATE ENROLLMENT SURGE
(K-12 growth of +670 students begins NOW).



CAPITALIZES ON EARLY COMMUNITY SUPPORT
(Momentum from Phase 2 meetings).



FASTER ACCESS TO FUNDS.

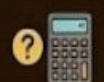
CONS (LESS PREP TIME)



REDUCED COMMUNITY ENGAGEMENT WINDOW.



LESS TIME FOR FINAL DESIGN & COST CERTAINTY (May lead to community questions).



CLOSER PROXIMITY TO THE 2027 HS CAPACITY SPIKE (772 students).



**BALLOT DATE:
MAY 2027
(MID-YEAR OPTION)**

PROS (MAX TIME FOR READINESS)



ALLOWS FULL ACADEMIC YEAR OF ADVOCACY.



FINALIZED DESIGNS & COST CERTAINTY
(Ensures transparency & trust).



AVOIDS THE PEAK HS CAPACITY IMPACT DATE
(Starts earlier relief).

CONS (MID-YEAR ELECTION)



MID-YEAR ELECTIONS CAN HAVE LOWER VOTER TURNOUT.



DELAYS ACCESS TO CONSTRUCTION FUNDS
(Misses the primary summer construction season).



RISKS MOUNTING OVERCROWDING PRESSURE.



BALLOT DATE: NOVEMBER 2027 (END-YEAR OPTION)

PROS (MAX PREP & VISIBILITY)



MAXIMUM PREPARATION & TRANSPARENCY



PROVEN HIGHER VOTER TURNOUT in General Elections.



LEVERAGES FINALIZED PLANS.

CONS (HIGHEST RISK)



SIGNIFICANT DELAY in addressing +670 student growth.



MAXIMIZES PRESSURE ON AGING FACILITIES & HIGH SCHOOL CAPACITY (Hits 772 students).



MAY NEED ADDITIONAL INTERIM SOLUTIONS.





Table Talk: When do we go on the Ballot?

When Do we Need to Take the Next Step?



Proactive planning today is the key to ensuring we continue to provide an excellent education for every Buckeye Valley student tomorrow.



Table Talk: Prioritize Needs

With district enrollment growing and buildings nearing capacity, how should the district prioritize the needs for facilities?

Transportation Center



Updated and relocated Transportation Center.

Land Acquisition



Land Acquisition to ensure the district has viable space for future growth and construction.

Elementary Overcrowding



Alleviating elementary classroom overcrowding.

Community Spaces



Optimizing Community Athletic, Arts and extracurricular spaces.

New High School



Constructing a New High School for modern 21st century learning and wellness.

Table Talk: Communication & Community Outreach

To ensure better community outreach..., which engagement strategies should the district prioritize...?



Comprehensive Communication:

Prioritize all mentioned engagement strategies, including communicating the consequences of not passing the proposal, as diverse and varied methods will boost success.



In-Person Outreach:

Focus on face-to-face communication through door-to-door efforts (especially for older residents and with high school student involvement), attending community events like Pancake Day, PTO/booster meetings, and visiting every township.



Targeted Engagement:

Present information at senior gatherings and leverage social media or involve students in promotional videos.

What is the one thing the District needs to do differently...?



Transparency and Honesty:

The District needs to be completely transparent and honest about the bond's cost and what the funds are asking for.



Consequences of Failure:

Clearly explain the consequences if the bond does not pass.



Communication:

Keep the communication clear, consistent, and transparent without any last-minute changes, and actively connect with taxpayers.



Growth Projections:

Provide an example of how annexation into Delaware city has affected growth projections, and how further annexation could exponentially increase growth.



Build Trust:

Build trust within the community.

From Recommendation to Ballot

Committee Recommendation



Superintendent Briefing



Board Determination



The Public Ballot



Committee Recommendation

The Facilities Committee submits its formal recommendation to the Superintendent.

Superintendent Briefing

The Superintendent provides necessary updates and proposal details to the Board of Education.

Board Determination

The Board of Education evaluates the information to make a final decision.

The Public Ballot

The approved bond issue is officially placed on the ballot for community voting.

Next Steps for the Committee

Monitor Board Process



Monitor Board Process

Observe the Superintendent's briefing and the Board's evaluation of the recommendation.

Await Board Approval



Await Board Approval

Pending the Board of Education's final decision to approve the bond issue.

Committee Reconvenes



Committee Reconvenes

The committee will gather after Board approval to strategize for the next phase.

Plan for Ballot Measure



Plan for Ballot Measure

Develop and support the community information campaign for the public vote.



Conclusion & Appreciation

Final Call to Action: Please submit your individual recommendations to the Superintendent.

Thank you for your dedication and hard work on the Facilities Committee. Your contributions are vital to building our future.



**Building Our Future Together:
Lifelong Learning & Wellness For All Stakeholders**