

LCAP Community Input Meeting

March 4, 2026



# Agenda

---

- Welcome & Introductions
- LCAP Funding & Actions
- Marking High Priority Actions
- Wrap up/Q & A
- Survey Reminder!





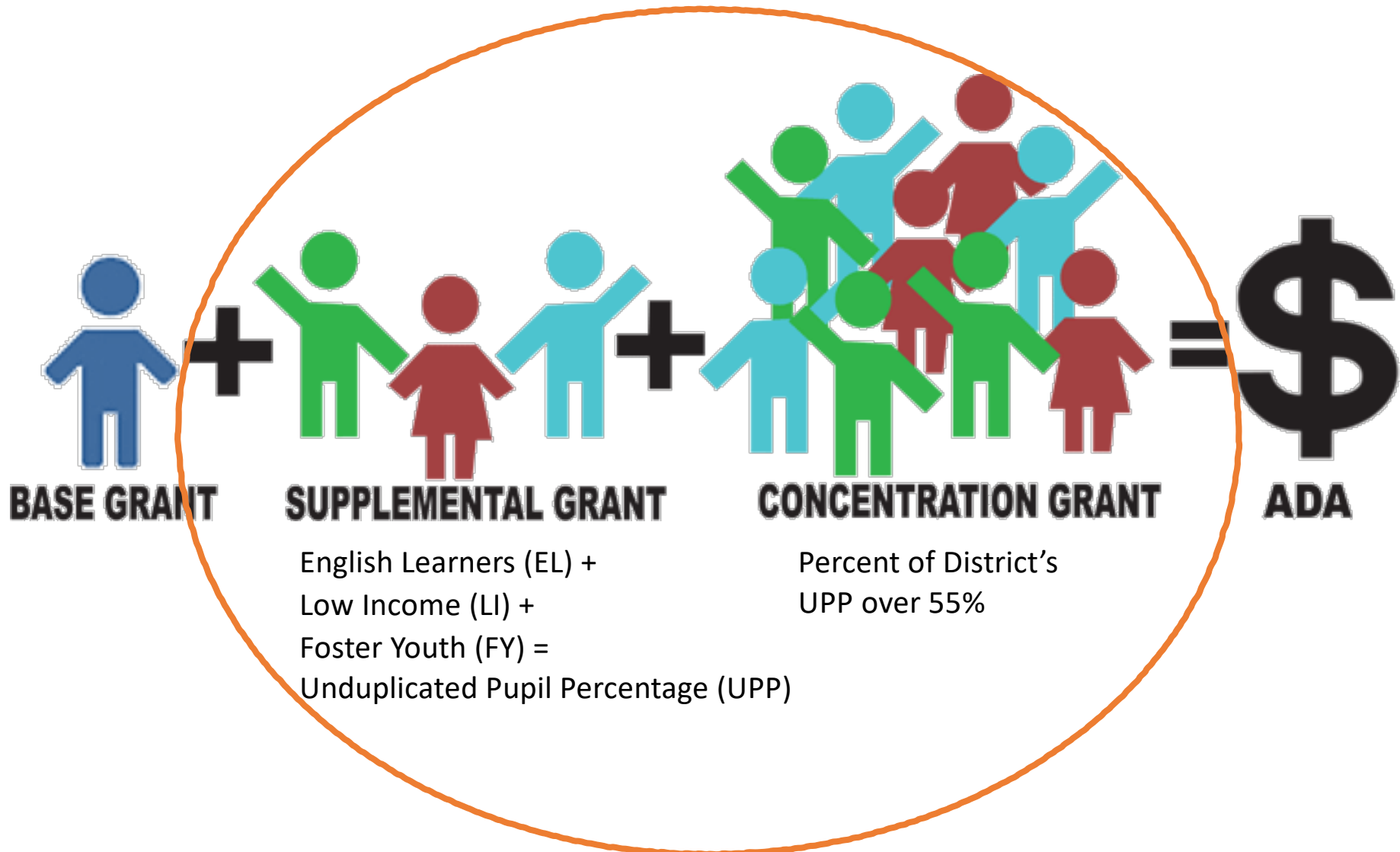
# LCAP Guiding Principles

Increased or improved student services or programs for the students that generated the funds.

LCAP programs or services are making a measurable difference in students' achievement and preparation.



# Students who generate the funds



# A Look at the Actions

---



## 25-26 LCAP Overview

### Local Control and Accountability Plan



#### Goal 1

Student Engagement, Well-being, and Success



#### Goal 2

Academic Achievement & College/Career Readiness



#### Goal 3

Resources, Infrastructure, & Support Systems



# Priorities



# ThoughtExchange Survey

---

Open now through  
March 11<sup>th</sup>, this  
individual survey asks  
you to indicate the  
level of importance you  
place on each action of  
the 25-26 LCAP.



Topic

## Goal 1: Engagement and School Climate

Provide all educational partners with a positive learning environment by creating safe, more inclusive schools that promote equitable access to school programs, activities, and tiered social-emotional and behavioral supports. These supports will foster a sense of connectedness, especially for English Learners (EL), Foster Youth (FY), African American Students, students experiencing homelessness, Low Income students (LI), students with disabilities (SWD), and other student groups whose outcomes indicate the greatest need.

### Question 4:

1.1 Tiered Social-Emotional and Mental Health Supports Support student mental health, attendance, and connectedness by providing social-emotional learning and mental health supports. (optional)

Select an option

High Importance

Moderate Importance

Low Importance

<https://bit.ly/RedlandsLCAPsurvey>

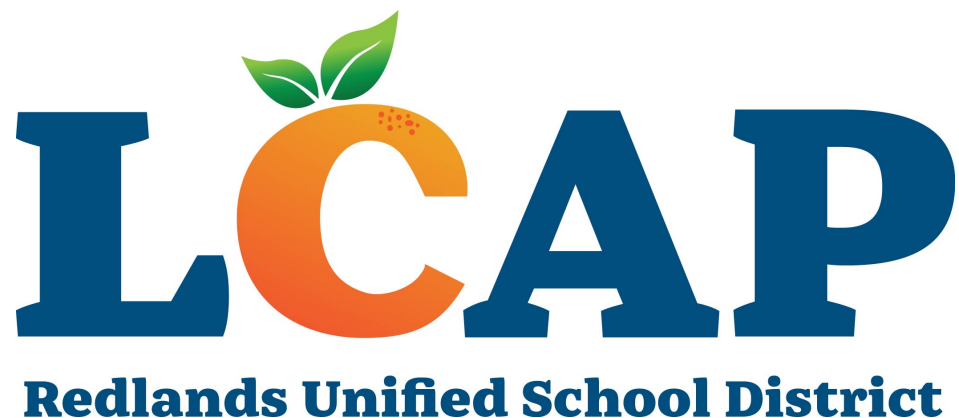


# Frequently Used Resources

District Website – <https://bit.ly/RedlandsLCAPwebsite>

California School Dashboard – [District Dashboard](#)

Thought Exchange – <https://bit.ly/December2025TE>



LCAP Advisory Committee Feedback

<https://bit.ly/RedlandsLCAP>



# 25-26 LCAP Overview

## Local Control and Accountability Plan



### Goal 1

Student Engagement, Well-being, and Success



### Goal 2

Academic Achievement & College/Career Readiness



### Goal 3

Resources, Infrastructure, & Support Systems

# Student Engagement, Well-being, and Success

Fostering a supportive environment for holistic student development



## Mental Health & Social-Emotional Learning

Comprehensive supports addressing student mental wellness and emotional development



## Positive Behavior & School Climate

Restorative practices and positive behavior interventions to improve campus culture



## Family & Community Engagement

Strengthening partnerships through outreach, translation, and involvement opportunities



## Career Readiness & Pathways

CTE programs, A-G completion support, and college preparation initiatives

14

Action Items

### Additional Focus Areas

- ✓ Arts, Athletics, Health & Wellness
- ✓ Targeted Attendance & Enrollment Support

# Mental Health & Support Services



**1.1** | Tiered Social-Emotional and Mental Health Supports



**1.2** | Positive Behavior Supports



**1.3** | Restorative Practices



**1.4** | Comprehensive School Counseling Program



**1.5** | Comprehensive School Counseling: Academic Case Carriers



**1.6** | Intervention Support Teams





# Family Engagement & Student Programs

**1.7** Parent & Community Involvement



**1.8** Language Assessment Center & Translation Services



**1.9** Career Technical Education (CTE)



**1.10** Visual & Performing Arts



**1.11** Redlands Connections League



**1.12** Health & Wellness Services



**1.13** Targeted Attendance Support



**1.14** Targeted Enrollment Support



# Academic Achievement & College/Career Readiness

Improving outcomes and preparing students for future success



## Professional Development & Coaching

Enhancing instructional quality to support implementation of state standards



## Tiered Academic & Literacy Supports

Targeted interventions and literacy programs to meet grade-level expectations



## Multilingual & English Learner Support

Specialized programs for English learners and multilingual student success



## College Readiness Programs

AVID, AP access, Dual Enrollment, and college-going opportunities

# 10

Action Items

### 💡 Additional Focus Areas

- ✓ *Summer School & Credit Recovery*
- ✓ *Instructional Technology & Innovation*

# Instructional Quality & Academic Support



**2.1** | Professional Development to Support Implementation of State Standards



**2.2** | Tiered Academic Support



**2.3** | Tiered Literacy Supports



**2.4** | Tiered Academic Supports for Multilingual Students



**2.5** | English Learner Programs



**2.6** | Supplemental Instructional Supports



# College Readiness & Innovation



**2.7** | Advancement Via Individual Determination (AVID)



**2.8** | College Readiness Programs



**2.9** | Summer School / Credit Recovery



**2.10** | Instructional Technology and Innovation



# Resources, Infrastructure, & Support Systems

Building capacity and infrastructure to support student success



## Staffing & Support

Recruit, retain, and support highly qualified staff



## Technology Access

Providing devices and ensuring internet connectivity for all students



## Site-Based Supports

Funding and resources aligned to School Plan for Student Achievement (SPSA)



## Facilities & Learning Environments

Enhanced facilities projects to improve learning spaces

7

## Action Items

### Additional Focus Areas

- ✓ Transportation Services
- ✓ LCAP Program Coordination

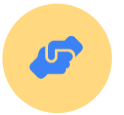
# Staffing & Professional Development



**3.1** | Recruitment and Retention of Qualified Staff



**3.2** | New Teacher Support Program



# Infrastructure & Systems



**3.3** | Access to Internet and/or Devices



**3.4** | Access and Opportunities - SPSA



**3.5** | Enhanced Facilities Projects



**3.6** | Transportation



**3.7** | LCAP Program Coordination

