

Francis Howell School District FINANCE BASICS

- ▶ **23 Schools**
- ▶ **16,466**
K-12 Enrollment - 7th largest in the state
- ▶ **\$260 million**
Operating Budget (FY26)
- ▶ **\$14 million**
Capital Projects Budget - Regular (FY26)
- ▶ **\$40 million**
Capital Projects Budget - Bond (FY26)
- ▶ **27.30%** - fluctuates
Fund Balance (FY26)

Efficiency



FHSD is one of the top-performing districts in the state. And we are consistently doing more with less.

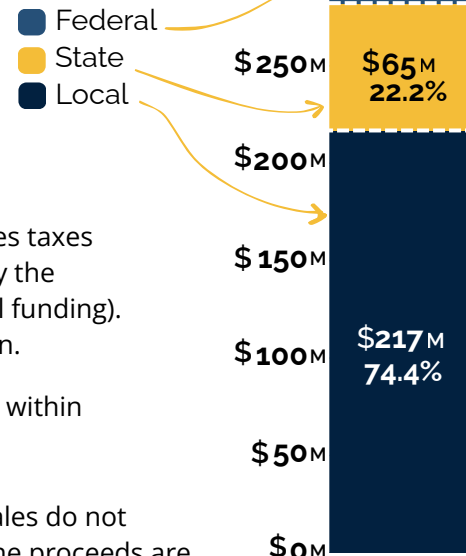
- Fewer administrators than similar-sized districts
- Higher student-to-teacher ratio than peer districts and the state average
- Lowest per-student expenditure among peer districts - *we spend less money to educate our students*
- Lowest tax rate in the county

How public schools are funded

K-12 schools are funded primarily through three buckets of funding:

- ▶ **Federal:** Pays for very specific programs and needs, like nutrition, special education, and English language learning. School districts with a greater number of high-needs students receive more federal funding.
- ▶ **State:** Funded through “general revenue” (made up of state income and sales taxes that all of us pay). The amount each school district receives is determined by the “Foundation Formula” (based on student attendance, cost of living, and local funding). Missouri’s share of funding is lower than most every other state in the nation.
- ▶ **Local:** Funded primarily by property taxes paid by residents and businesses within the district. FHSD relies heavily on local funding.

FHSD relies on **local funding** more than most districts



FHSD Revenue
(all funds, in millions)



Did you know?

Proceeds from lottery and gambling sales do not necessarily increase school funding. The proceeds are often treated as replacement revenue, not additional revenue, resulting in a net-zero benefit for schools.

Four Primary Funds

The District maintains four primary funds as required by DESE. Think of these like separate checking accounts for different types of purchases. The District also manages a fiduciary fund to support self-funded insurance.

Bonds =
Buildings



Levies =
Learning



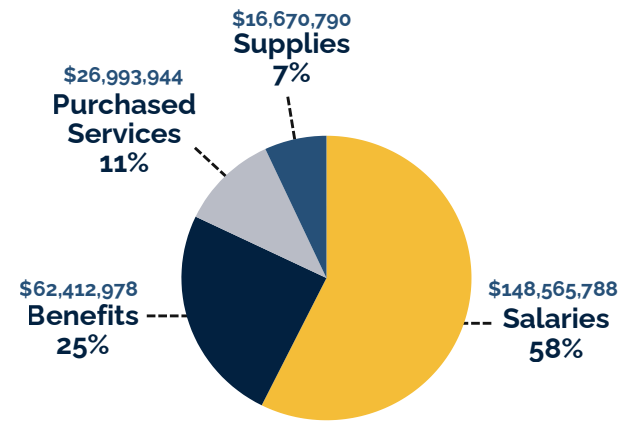
General Fund 1	Teacher Fund 2	Capital Projects Fund 4	Debt Services Fund 3
<ul style="list-style-type: none"> • salaries & benefits for non-certificated staff • services • supplies 	<ul style="list-style-type: none"> • salaries & benefits for certificated staff • tuition 	<ul style="list-style-type: none"> • facility or land acquisition • construction • lease purchase principal and interest payments • other capital 	<ul style="list-style-type: none"> • long-term debt payments of principal, interest and fees
<p>Operating Levy may be placed within any of these funds.</p>			<p>Debt Service Levy</p>

Operating Expenses

Our People

People are the backbone of our operation, so it's no surprise that:

- More than 80% of the District's budget pays for salary and benefits for our 2,400 employees.
- FHSD is the 6th largest employer in St. Charles County, and the 3rd largest nonprofit employer!
- The total cost to employ one teacher, on average, is approximately \$90,000 (salary + benefits) - and they are worth so much more!
- The cost to provide a "step increase" (roughly 2% raise) to all eligible employees is approximately **\$2.8 million** per year.
- FHSD covers 100% of medical and dental premiums for eligible employees, and a portion of premiums for eligible dependents. This is a great benefit, but carries a hefty price tag. Last year, health insurance premiums increased 23.5%, or **\$6.3 million**.



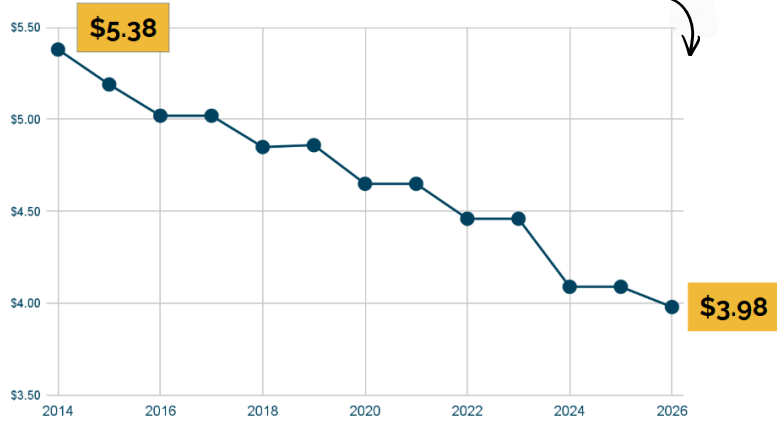
Levy History



The last successful operating tax levy for Francis Howell was passed by voters in **2004** - more than 20 years ago! Three levies were attempted in the years following, and all failed: Prop Y in August 2015, Prop Howell in November 2016, and Prop Learn in April 2018.

FHSD Tax Rate History

Our tax rate is lower today than it was a decade ago.



In June 2020, 79.28% of Francis Howell voters approved Proposition S, a \$244 million bond issue. Thanks to the community's support, our 23 school campuses benefited from much needed facility improvements, including:

- Security vestibules to improve safety at all facilities
- Accessible playgrounds at all 10 elementary schools
- A new Francis Howell North High School
- A new home for Francis Howell Union High school and district administrative offices
- Classroom additions at Henderson and Fairmount elementary schools
- A new transportation bus maintenance facility
- Auditorium renovations at two high schools
- HVAC, electrical, lighting, flooring and parking lot improvements at multiple campuses
- Athletic complex improvements, including a new wrestling/multipurpose room, track repairs, tennis court improvements, and baseball/softball field upgrades

The Hancock Effect

Revenue Growth is based on the LOWEST of: Assessed Valuation (AV) Growth; the Consumer Price Index (CPI) - a measure of inflation; or 5%.

Tax Year	AV Growth	OR	CPI	OR	5%	➔	Actual FHSD Increase
2025	6.50%		2.9%		5%		2.9%
2024	-0.92%		3.4%		5%		0.0%
2023	16.50%		6.5%		5%		5%
2022	0.12%		7.0%		5%		0.12%
2021	6.52%		1.4%		5%		1.4%
2020	0.15%		2.3%		5%		0.15%
2019	7.47%		1.9%		5%		1.9%
2018	0.23%		2.1%		5%		0.23%
2017	6.56%		2.1%		5%		2.1%
2016	0.25%		0.7%		5%		0.25%

The yellow shaded box indicates the actual revenue increase the District received from residential real estate taxes in each of the last 10 years.

Building the Budget

