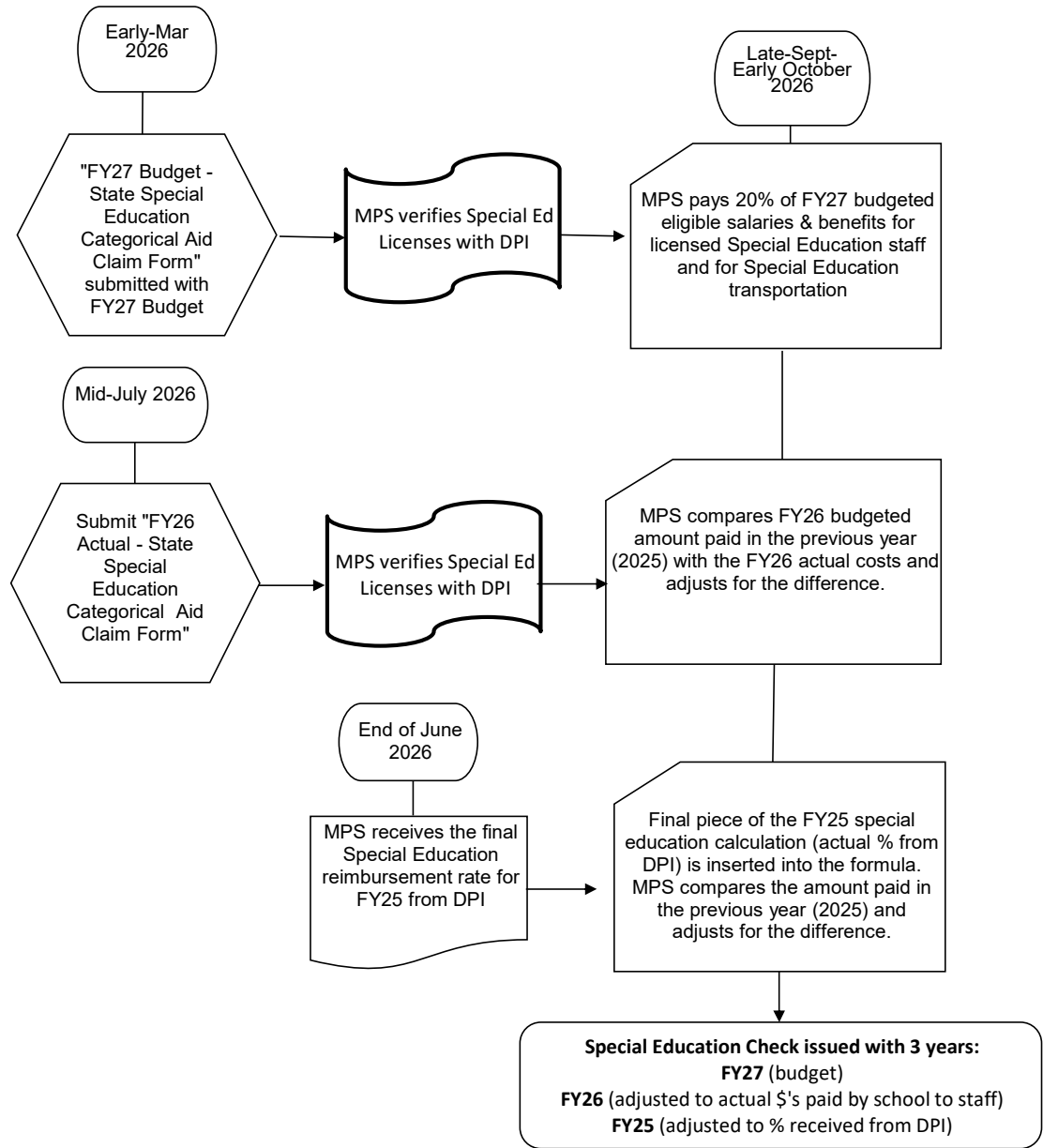


FY27 SPECIAL EDUCATION COST CLAIM AND REIMBURSEMENTS PROCESS



Visit MPS Homepage for Non-instrumentality Charter Schools to retrieve a copy of the "FY27 Budget - 2026-2027 State Special Education Categorical Aid Claim Form with instructions" to complete.

E-mail special education claim forms **in excel format** to Tangela Anderson at anderst6@milwaukee.k12.wi.us.

Note: If forms are not received on time, no 2027 payment will be made until the following year.