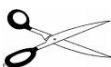


# ISSMA Band Contest Schedule Southwestern Middle School Friday March 13, 2026

## **Intermediate Band Performance Schedule:**

- 5:30PM Arrive at Southwestern Middle School - Door A1 (Cafeteria Entrance)  
5:45PM Attendance and Materials Check - Music, Instrument, & Concert Attire  
5:50PM Introduce Chaperones and bus assignments  
Bus #1 = Percussion in the front, then Low Reeds, Altos, Flutes & Clarinets  
Bus #2 = All Brass – Tubas in the front, then Euphoniums, Trombones, & Trumpets  
Seating: Boys sit with Boys and Girls sit with Girls  
5:55PM Load the buses - Attendance again on buses  
6:00PM Leave for Maconaquah High School  
7:40PM Arrive, Unload, and go to homeroom area
- ***Absolutely No Playing of Any Instruments outside Warm-up or Performance Areas!***
  - ***No electronic devices allowed for musicians inside the contest site.***
  - ***These are strict ISSMA rules and any band will be penalized!***
- 7:50PM Seated in homeroom area –Percussionist’s set-up equipment  
8:05PM Instruments out of cases  
8:10PM Line up by performance rows for transit to warm-up area  
8:15PM Transit to Warm-up  
8:20PM Warm – up  
8:45PM Transit to perform  
**8:50PM Southwestern Intermediate Band - ISSMA Contest Performance**  
**Parents are invited to watch the performance.**  
9:10PM Transit from Performance area to homeroom area  
9:15PM All equipment and instruments are put away and wait for contest results from the judges.  
9:20PM Load the buses and leave for Southwestern  
11:00PM Arrive at Southwestern unload - Students can leave once everything is put away



## **ISSMA Band Contest Permission Slip**

**Parents - Please keep the top part of this form as your schedule.  
Please return this portion to Mr. Eisan by Friday, March 6, 2026.**

I \_\_\_\_\_ give permission for my child \_\_\_\_\_ to  
Parent/Legal Guardian Student First & Last Name

participate in the ISSMA Band Contest at Maconaquah High School on Friday March 13, 2026. I also understand this competition is a co-curricular part of the band class grade.

Parent/Legal Guardian Signature: \_\_\_\_\_ Date: \_\_\_\_\_

### **Please check below if you are able to help chaperone:**

I am able to chaperone for the band contest on Friday March 13, 2026 & qualify for ONE of the following:

\_\_\_\_ I am a certified licensed teacher currently teaching in Indiana.

\_\_\_\_ I have completed the expanded background check for TSC within the past 3 years

## **More Important ISSMA Band Contest Information**

**Parents – Please post this schedule and have your band student ready to go.**

### **Concert Attire:**

- Gentlemen:
  - Wear your RED Band Polo Shirt
  - Black Pants, Black Belt, Black Socks, and Black Dress Shoes.
- Ladies:
  - Wear your RED Band Polo Shirt
  - Black Pants and Black Socks (Socks optional depending of footwear)
  - Black Dress Shoes - Flat OR closed-toe shoe with a heel of a 1 inch or less

### **The BUS:**

- Parents - All Intermediate Band students **MUST** ride the bus to the contest site of Maconaquah High School.
- If you need to pick up your students **AFTER** the performance, please e-mail Mr. Eisan **BEFORE** Monday March 9, 2026. Students are responsible to take their music **AND** band instrument with them. Thank you.

### **Emergency instrument Repairs:**

There will **NOT** be any emergency repairs at the contest site. Please make sure your instrument is in proper playing condition **BEFORE** the band contest.

### **Students with medical needs such as medications, crutches, etc.**

If you have a student with medical needs, please plan on riding the bus or caravanning with the buses to Maconaquah. High School. School nurses do **NOT** travel on the buses with students and teachers are **NOT** allowed to administer medications. If your child's medication might be wearing off by the end of the school, day, what will that look like for a band competition that requires extreme focus? Please see your physician for advice.

### **Concert Etiquette:**

Once a band starts performing, the doors to the auditorium will not be opened to enter or leave the auditorium. This is an ISSMA rule and it will be enforced! Remember, bands are being judged and recorded in the auditorium.

### **Your Grade:**

Yes - The ISSMA Band Contest has been on the calendar all school year and it is a co-curricular grade for band class. All band students are required to perform at the contest, as they are representing the music program and Southwestern Middle School...and they might have fun!

# INDIANA STATE SCHOOL MUSIC ASSOCIATION, INC.

## 2025-26 EXECUTIVE COMMITTEE/DIRECTORS

President: Timothy Johnston, Seymour High School  
Vice President: Peter Sampson, Whiteland Community High School  
Past President: Paula Simmons, Elwood Junior-Senior High School  
ISSMA Executive Director: Randy W. Greenwell  
Instrumental Education Director: Mark A. Middleton  
Choral Education Director: Scott A. Bradford

### *“A Statement from the ISSMA Office”*

*Directors are responsible for the behavior of their students at all ISSMA events. Instruction regarding proper conduct and expectations should be a part of the overall educational process. It is crucial that host schools, administrators and teachers can confidently host our events without fear of damage to school property or inappropriate behavior.*

*The directors of the member schools will serve as the liaison between ISSMA and schools, students, parents, and staff members regarding questions, comments or concerns for all ISSMA events.*

*Direct contact with any adjudicator is considered inappropriate.*

*Thank you in advance for your cooperation.*

### **ISSMA Statement of Philosophy (Core Values)**

**ISSMA** believes that every student in grades six through twelve attending an Indiana public or private school should have the opportunity to participate in a music ensemble taught by a licensed music educator that is included as part of each school’s core curriculum.

**ISSMA** believes that participation in school music ensembles contributes to students’ language and auditory development; physical, emotional, and social development; and cognitive and creative thinking skill development.

**ISSMA** believes that participation in educationally evaluated music performance opportunities provide an external assessment that promotes sound educational principles of music education.

**ISSMA** believes that participation in an ISSMA event should be focused on the commitment to achieving individual and group goals and accepted standards of excellence and should not be focused on winning a competition.

**ISSMA** believes it has legal and moral responsibility to provide a safe and respectful environment for participants, workers, adjudicators, volunteers and spectators.

# CONCERT ETIQUETTE



*Thank you for joining us for this prestigious event.*

*As the audience, you have a very important role to play in making today special for the students and directors who have worked very hard to reach this level of performance.*

*The audience's responsibility at this and all formal concerts is to honor the efforts of the performers by providing a listening atmosphere in which all can appreciate their performance.*

*You may hear adjudicators talking as they provide recorded commentary during these performances. Please understand that this is an important and necessary part of the total assessment process for the participants.*

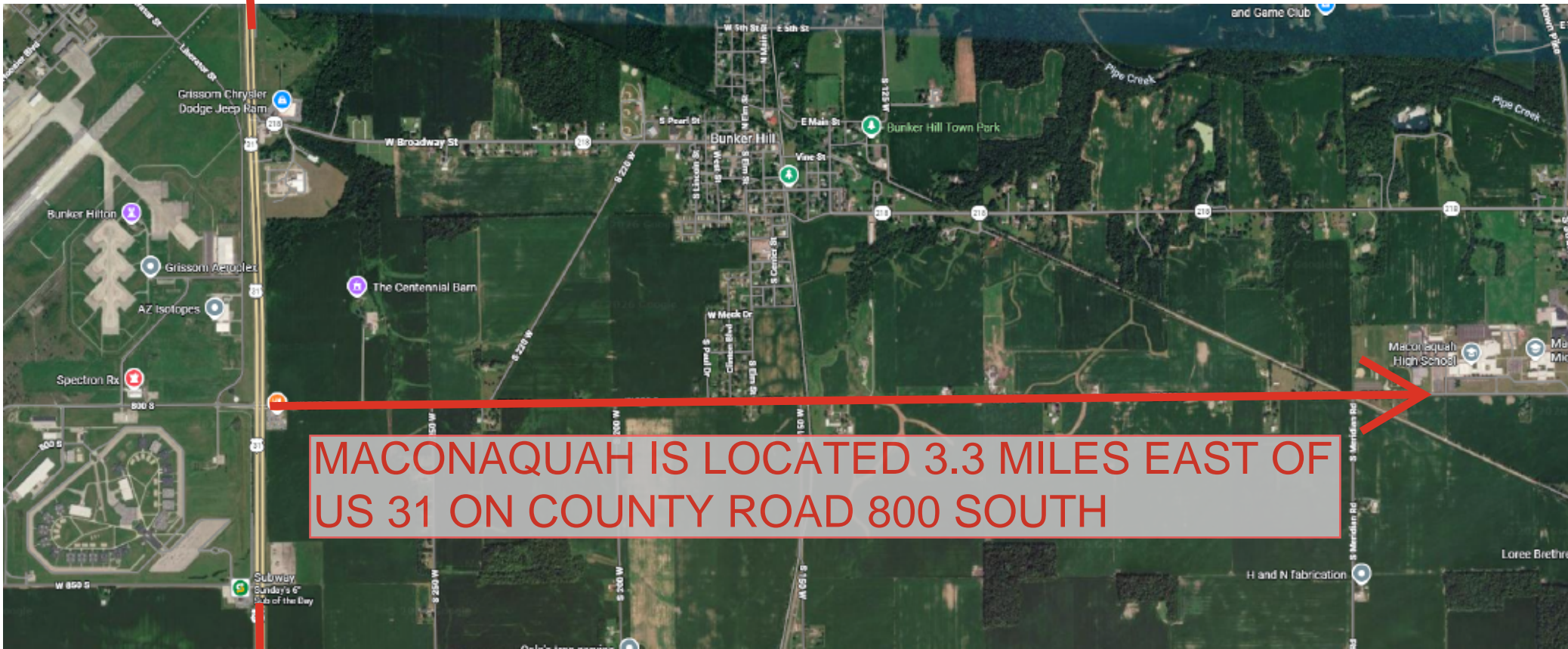
## **We ask your cooperation with the following:**

- **Turn off all cell phones and electronic devices.**
- **Wait to show support for the ensemble with your applause until after the ensemble has been introduced.**
- **Whistling and cheering, as well as humming or clapping along with the performers, are not appropriate at this or any formal concert.**
- **Children often become unsettled at concert events. If your child becomes restless, please remove them to the outer corridor.**

**ONCE A PERFORMANCE HAS STARTED, NO ONE WILL BE ADMITTED TO THE CONCERT VENUE.**

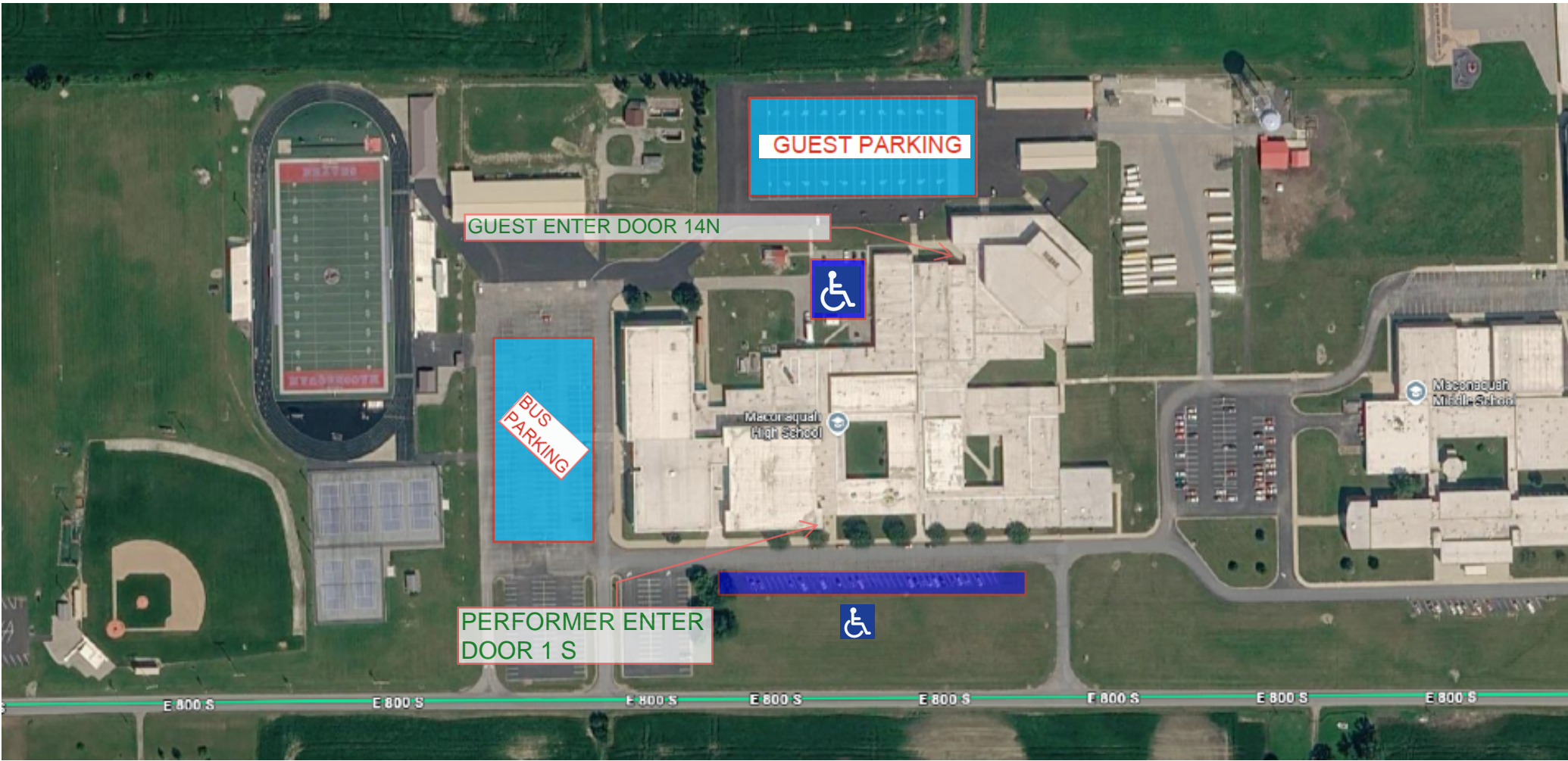
**THANK YOU!**

TO PERU



MACONAQUAH IS LOCATED 3.3 MILES EAST OF US 31 ON COUNTY ROAD 800 SOUTH

TO KOKOMO



GUEST PARKING

GUEST ENTER DOOR 14N

BUS PARKING



Macomb High School

Macomb Middle School

PERFORMER ENTER DOOR 1 S



E 800 S

E 800 S

E 800 S

E 800 S

E 800 S

E 800 S

E 800 S

E 800 S