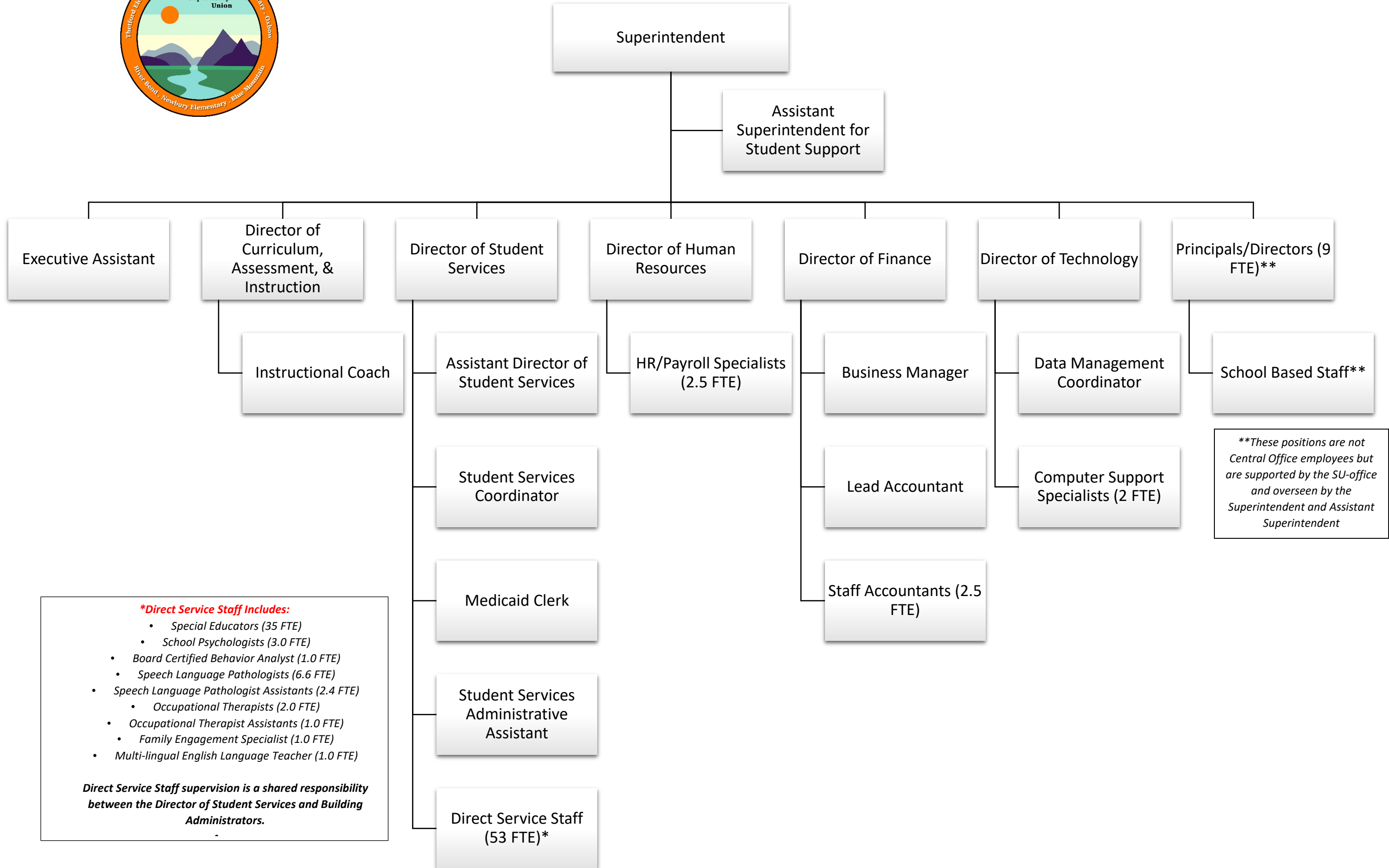




Orange East Supervisory Union Organizational Chart



***Direct Service Staff Includes:**

- Special Educators (35 FTE)
- School Psychologists (3.0 FTE)
- Board Certified Behavior Analyst (1.0 FTE)
- Speech Language Pathologists (6.6 FTE)
- Speech Language Pathologist Assistants (2.4 FTE)
 - Occupational Therapists (2.0 FTE)
- Occupational Therapist Assistants (1.0 FTE)
 - Family Engagement Specialist (1.0 FTE)
- Multi-lingual English Language Teacher (1.0 FTE)

Direct Service Staff supervision is a shared responsibility between the Director of Student Services and Building Administrators.

****These positions are not Central Office employees but are supported by the SU-office and overseen by the Superintendent and Assistant Superintendent**