

LEA Name : Seneca Valley SD  
Address : 124 Seneca School Rd  
Harmony, PA 16037

County : Butler  
AUN Number : 104107903  
LEA Type : SD

# Annual Financial Report Accuracy Certification Statement

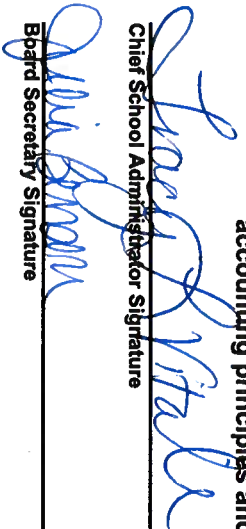
For Fiscal Year Ending  
6/30/2024

Pennsylvania Department of Education  
&  
Office of Comptroller Operations

PDE-2056: Intermediate Unit  
PDE-2057: School District, AVTS/CTC, Charter School,  
and Special Program Jointure

**CERTIFICATION:** By signing this page I agree that the electronic data submitted is a complete and accurate statement of the financial operations and status of the local education agency for the fiscal year. It has been prepared in accordance with generally accepted accounting principles and established Commonwealth of PA reporting guidelines.

Chief School Administrator Signature



Date

11-6-24

Board Secretary Signature

Date

11/6/24

Celeste R Foley

(724)452-6044

Ext : 1622

Contact Person

Contact Person Telephone Number

foleycr@svsd.net

Contact Person E-mail Address

Contact Person Fax Number

**Audit Certification**  
**Annual Financial Report:**  
For Fiscal Year Ending 6/30/2024  
(Pursuant to PA School Code Section 218(b))

LEA Name : Seneca Valley SD  
AUN Number : 104107903  
County : Butler

Audit Certification Due: 12/31/2024
--

**This certification is applicable to the Annual Financial Report data submitted through the Consolidated Financial Reporting System (CFRS).**


**CERTIFICATION:** By signing this page I agree that the financial statements of the school have been properly audited as noted above pursuant to Article XXIV, and in the auditor's professional opinion, the Annual Financial Report (PDE-2057) submitted through CFRS is materially consistent with the audited financial statements.

Chief School Administrator

  
Signature

11-16-24  
Date

Board Secretary

  
Signature

11/16/24  
Date

Celeste R Foley

Contact Person

(724)452-6044

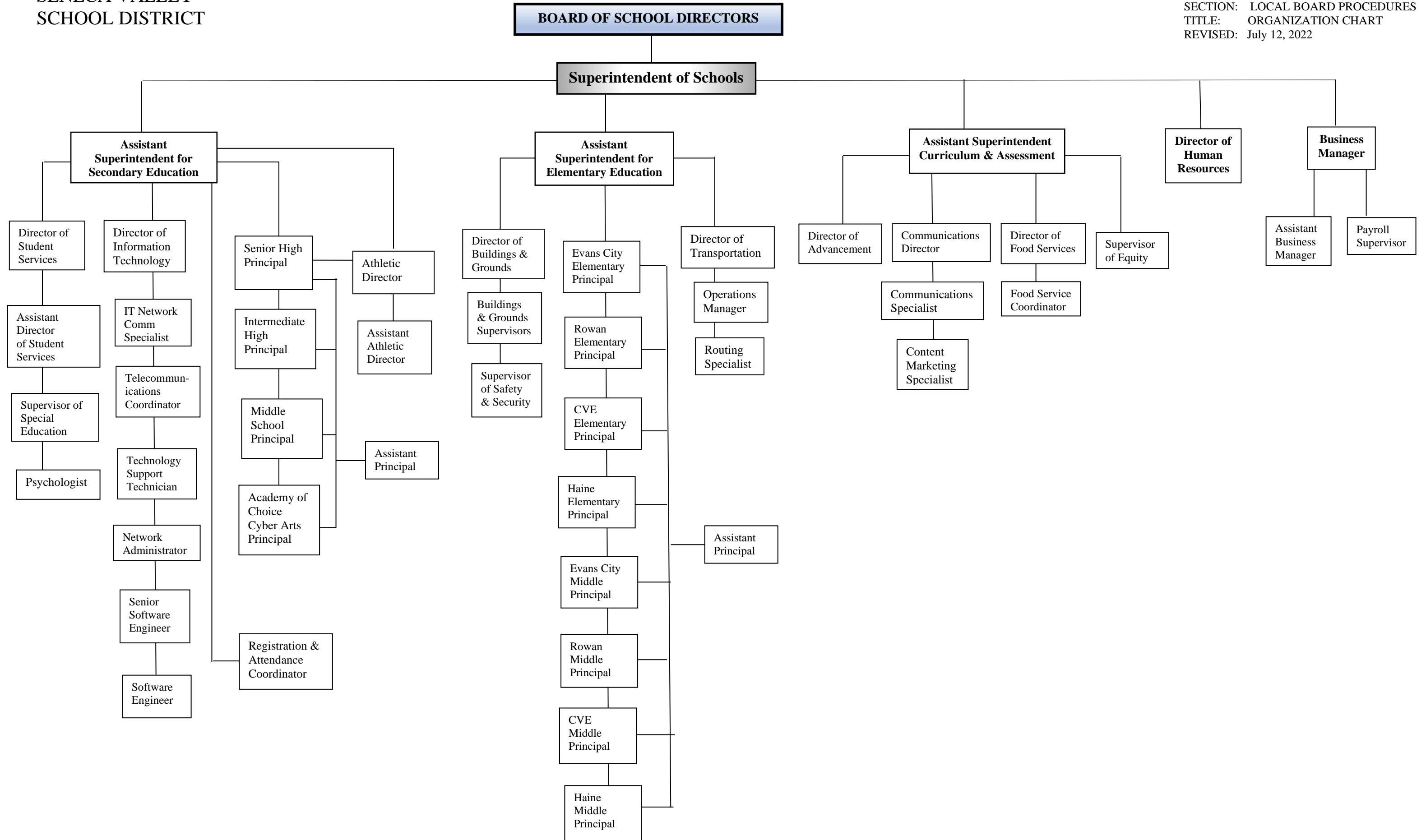
Contact Person Telephone Number

Ext : 1622

foleycr@svsd.net

Contact Person E-mail Address

Contact Person Fax Number



# Seneca Valley School District



Tracy L. Vitale, Ed.D.  
Superintendent of Schools

**Administration Center**  
124 Seneca School Road  
Harmony, PA 16037-9134  
PHONE: (724) 452-6040  
FAX: (724) 452-6105

The Seneca Valley School District current capitalization practice is to capitalize as an asset any purchases as equipment or qualified capital improvement exceeding \$5,000.00.

Capitalized purchase are added to the District's fixed asset inventory and subsequently depreciated.

<u>Val Number</u>	<u>Description</u>	<u>Justification</u>
12206	<p>REG - Fund 32: Current Year AFR Beginning Fund Balance must equal Prior Year AFR Ending Fund Balance. Justifications to this error must fully explain the situation that prompted a fund balance restatement. "Auditor Adjustment" is not a sufficient justification.</p> <p>REG Fund 32, Beg Fund Bal: \$30,719,367.00 PY Ending Fund Balance: \$0.00</p>	<p>Before the 2023-2024 fiscal year, our District reported the capital reserve fund and bond issues as fund 39. Starting in 2023-2024, we have separated these, with the capital reserve fund into fund 32 and the remaining bond funds continuing in fund 39.</p>
12207	<p>REG - Fund 39: Current Year AFR Beginning Fund Balance must equal Prior Year AFR Ending Fund Balance. Justifications to this error must fully explain the situation that prompted a fund balance restatement. "Auditor Adjustment" is not a sufficient justification.</p> <p>REG Fund 39, Beg Fund Bal: \$3,032,580.00 PY Ending Fund Balance: \$33,751,947.00</p>	<p>Before the 2023-2024 fiscal year, our District reported the capital reserve fund and bond issues as fund 39. Starting in 2023-2024, we have separated these, with the capital reserve fund into fund 32 and the remaining bond funds continuing in fund 39.</p>
30116	<p>Revenue Detail: A large amount has been reported as Earnings on Investments in Fund 32, account 6500, which should only include interest and/or dividend earnings. Correct or provide a brief explanation of the revenue reported.</p> <p>Revenue Detail 6500, Fund 32: \$1,142,905.00</p>	<p>The \$1,142,905 has been confirmed to consist solely of interest/dividends.</p>

Amounts Expressed in Whole Dollars

	<u>General Fund</u> <u>(10)</u>	<u>Student Sponsored</u> <u>Activity Fund</u> <u>(21)</u>	<u>Public Purpose Trust</u> <u>(27)</u>	<u>Other Compt Approved</u> <u>(28)</u>	<u>Athletic / Activity</u> <u>(29)</u>
<b>Assets And Deferred Outflows Of Resources</b>					
<b>Assets</b>					
0100 Cash and Cash Equivalents	7,846,671		174,227		
0110 Investments	46,654,655				
0120 Taxes Receivable	429,822				
0130 Due From Other Funds	564,699				
0141 Due From Other Governments	6,560,071				
0142 State Revenue Receivable					
0143 Federal Revenue Receivable					
0145 Other Intergovernmental Revenue Receivable					
0146 Due from Primary Government					
0147 Due from Component Unit					
0150 Other Receivables	248,849				
0170 Inventories					
0180 Prepaid Expenses (Expenditures)					
0190 Other Current Assets					
<b>Total Assets</b>	<b>\$62,304,767</b>		<b>\$174,227</b>		
0910 Deferred Outflows of Resources					
<b>Total Assets And Deferred Outflows Of Resources</b>	<b>\$62,304,767</b>		<b>\$174,227</b>		

Amounts Expressed in Whole Dollars

<u>Capital Reserve (690.</u>	<u>Capital Reserve (1431)</u>	<u>Other Capital Projects</u>	<u>Debt Service</u>	<u>Permanent</u>
<u>1850)</u>	<u>(32)</u>	<u>Fund</u>	<u>(40)</u>	<u>(90)</u>
<u>(31)</u>		<u>(39)</u>		

**Assets And Deferred Outflows Of Resources**

**Assets**

0100 Cash and Cash Equivalents		33,994,257		
0110 Investments			2,335,533	
0120 Taxes Receivable				
0130 Due From Other Funds				
0141 Due From Other Governments				
0142 State Revenue Receivable				
0143 Federal Revenue Receivable				
0145 Other Intergovernmental Revenue Receivable				
0146 Due from Primary Government				
0147 Due from Component Unit				
0150 Other Receivables				
0170 Inventories				
0180 Prepaid Expenses (Expenditures)				
0190 Other Current Assets				
<b>Total Assets</b>		<b>\$33,994,257</b>	<b>\$2,335,533</b>	
0910 Deferred Outflows of Resources				
<b>Total Assets And Deferred Outflows Of Resources</b>		<b>\$33,994,257</b>	<b>\$2,335,533</b>	

Amounts Expressed in Whole Dollars

**Total Governmental Funds**

**Assets And Deferred Outflows Of Resources**

<b>Assets</b>	
0100 Cash and Cash Equivalents	42,015,155
0110 Investments	48,990,188
0120 Taxes Receivable	429,822
0130 Due From Other Funds	564,699
0141 Due From Other Governments	6,560,071
0142 State Revenue Receivable	
0143 Federal Revenue Receivable	
0145 Other Intergovernmental Revenue Receivable	
0146 Due from Primary Government	
0147 Due from Component Unit	
0150 Other Receivables	248,849
0170 Inventories	
0180 Prepaid Expenses (Expenditures)	
0190 Other Current Assets	
<b>Total Assets</b>	<b>\$98,808,784</b>
0910 Deferred Outflows of Resources	
<b>Total Assets And Deferred Outflows Of Resources</b>	<b>\$98,808,784</b>

LEA : 104107903 Seneca Valley SD

Printed 11/18/2024 3:08:23 PM

Amounts Expressed in Whole Dollars	<u>General Fund</u> <u>(10)</u>	<u>Student Sponsored</u> <u>Activity Fund</u> <u>(21)</u>	<u>Public Purpose Trust</u> <u>(27)</u>	<u>Other Compt Approved</u> <u>(28)</u>	<u>Athletic / Activity</u> <u>(29)</u>
<b>Liabilities And Deferred Inflows Of Resources And Fund Balances</b>					
<b>Liabilities</b>					
0400 Due to Other Funds	466,736				
0411 Due to Other Governments	1,311				
0412 Due to Primary Government					
0413 Due to Component Unit					
0420 Accounts Payable	2,388,026				
0430 Contracts Payable					
0440 Current Portion of Long-Term Debt					
0450 Short-Term Payables					
0461 Accrued Salaries and Benefits	12,572,677				
0462 Payroll Deductions and Withholding	6,347,759				
0480 Unearned Revenues	136,079				
0490 Other Current Liabilities					
<b>Total Liabilities</b>	<b>\$21,912,588</b>				
0950 Deferred Inflows of Resources					
<b>Fund Balances</b>					
0810 Nonspendable Fund Balance					
0820 Restricted Fund Balance	217,222		174,227		
0830 Committed Fund Balance	1,000,000				
0840 Assigned Fund Balance	27,174,957				
0850 Unassigned Fund Balance	12,000,000				
<b>Total Fund Balances</b>	<b>\$40,392,179</b>		<b>\$174,227</b>		
<b>Total Liabilities, Deferred Inflows Of Resources And Fund Balances</b>	<b>\$62,304,767</b>		<b>\$174,227</b>		

LEA : 104107903 Seneca Valley SD

Printed 11/18/2024 3:08:23 PM

Amounts Expressed in Whole Dollars	<u>Capital Reserve (690.</u> <u>1850)</u> <u>(31)</u>	<u>Capital Reserve (1431)</u> <u>(32)</u>	<u>Other Capital Projects</u> <u>Fund</u> <u>(39)</u>	<u>Debt Service</u> <u>(40)</u>	<u>Permanent</u> <u>(90)</u>
<b>Liabilities And Deferred Inflows Of Resources And Fund Balances</b>					
<b>Liabilities</b>					
0400 Due to Other Funds					
0411 Due to Other Governments					
0412 Due to Primary Government					
0413 Due to Component Unit					
0420 Accounts Payable		530,683	352,050		
0430 Contracts Payable					
0440 Current Portion of Long-Term Debt					
0450 Short-Term Payables					
0461 Accrued Salaries and Benefits					
0462 Payroll Deductions and Withholding					
0480 Unearned Revenues					
0490 Other Current Liabilities					
<b>Total Liabilities</b>		<b>\$530,683</b>	<b>\$352,050</b>		
0950 Deferred Inflows of Resources					
<b>Fund Balances</b>					
0810 Nonspendable Fund Balance					
0820 Restricted Fund Balance			1,983,483		
0830 Committed Fund Balance					
0840 Assigned Fund Balance		33,463,574			
0850 Unassigned Fund Balance					
<b>Total Fund Balances</b>		<b>\$33,463,574</b>	<b>\$1,983,483</b>		
<b>Total Liabilities, Deferred Inflows Of Resources And Fund Balances</b>		<b>\$33,994,257</b>	<b>\$2,335,533</b>		

Amounts Expressed in Whole Dollars

**Total Governmental Funds**

**Liabilities And Deferred Inflows Of Resources And Fund Balances**

**Liabilities**

0400 Due to Other Funds	466,736
0411 Due to Other Governments	1,311
0412 Due to Primary Government	
0413 Due to Component Unit	
0420 Accounts Payable	3,270,759
0430 Contracts Payable	
0440 Current Portion of Long-Term Debt	
0450 Short-Term Payables	
0461 Accrued Salaries and Benefits	12,572,677
0462 Payroll Deductions and Withholding	6,347,759
0480 Unearned Revenues	136,079
0490 Other Current Liabilities	

**Total Liabilities \$22,795,321**

0950 Deferred Inflows of Resources

**Fund Balances**

0810 Nonspendable Fund Balance	
0820 Restricted Fund Balance	2,374,932
0830 Committed Fund Balance	1,000,000
0840 Assigned Fund Balance	60,638,531
0850 Unassigned Fund Balance	12,000,000

**Total Fund Balances \$76,013,463**

**Total Liabilities, Deferred Inflows Of Resources And Fund Balances \$98,808,784**

Amounts Expressed in Whole Dollars	<u>General Fund</u> <u>(10)</u>	<u>Student Sponsored</u> <u>Activity Fund</u> <u>(21)</u>	<u>Public Purpose Trust</u> <u>(27)</u>	<u>Other Compt Approved</u> <u>(28)</u>	<u>Athletic / Activity</u> <u>(29)</u>
<b>Revenues</b>					
6000 Revenue from Local Sources	120,694,560		1,550		
7000 Revenue from State Sources	40,860,976				
8000 Revenue from Federal Sources	1,271,381				
<b>Total Revenues</b>	<b>\$162,826,917</b>		<b>\$1,550</b>		
<b>Expenditures</b>					
1000 Instruction	102,430,121				
2000 Support Services	42,936,014		35		
3000 Operation of Non-Instructional Services	2,676,545		100		
4000 Facilities Acquisition, Construction and Improvement Services	157,195				
5110 Debt Service	11,285,900				
5130 Refund of Prior Year Revenues / Receipts	336,616				
5140 Leases and Other Right-to-Use Arrangements	378,277				
<b>Total Expenditures</b>	<b>\$160,200,668</b>		<b>\$135</b>		
<b>Excess (Deficiency) Of Revenues Over Expenditures</b>	<b>\$2,626,249</b>		<b>\$1,415</b>		
<b>Other Financing Sources (Uses)</b>					
9110 Face Value of Bonds Issued					
9120 Proceeds from Refunding of Bonds					
9130 Bond Premiums					
9200 Proceeds from Extended Term Financing, Leases, and Other Right-to-Use Arrangements	763,721				
9300 Interfund Transfers - IN			111,000		
9400 Sale of or Compensation for Loss of Fixed Assets					
9710 Transfers from Component Units					
9720 Transfers from Primary Governments					
9910 Other Financing Sources Not Listed in the 9000 Series					
9990 Insurance Recoveries	2,740				
5120 Debt Service – Refunded Bonds					
5150 Bond Discounts					
5200 Interfund Transfers – Out	8,771,000				
5300 Transfers Out to Component Units/Primary Governments					
<b>Total Other Financing Sources (Uses)</b>	<b>(\$8,004,539)</b>		<b>\$111,000</b>		

Amounts Expressed in Whole Dollars	<u>Capital Reserve (690, 1850) (31)</u>	<u>Capital Reserve (1431) (32)</u>	<u>Other Capital Projects Fund (39)</u>	<u>Debt Service (40)</u>	<u>Permanent (90)</u>
<b>Revenues</b>					
6000 Revenue from Local Sources		1,142,905	180,782		
7000 Revenue from State Sources					
8000 Revenue from Federal Sources					
<b>Total Revenues</b>		<b>\$1,142,905</b>	<b>\$180,782</b>		
<b>Expenditures</b>					
1000 Instruction					
2000 Support Services					
3000 Operation of Non-Instructional Services					
4000 Facilities Acquisition, Construction and Improvement Services		6,046,423	2,242,155		
5110 Debt Service					
5130 Refund of Prior Year Revenues / Receipts					
5140 Leases and Other Right-to-Use Arrangements					
<b>Total Expenditures</b>		<b>\$6,046,423</b>	<b>\$2,242,155</b>		
<b>Excess (Deficiency) Of Revenues Over Expenditures</b>		<b>(\$4,903,518)</b>	<b>(\$2,061,373)</b>		
<b>Other Financing Sources (Uses)</b>					
9110 Face Value of Bonds Issued					
9120 Proceeds from Refunding of Bonds					
9130 Bond Premiums					
9200 Proceeds from Extended Term Financing, Leases, and Other Right-to-Use Arrangements					
9300 Interfund Transfers - IN		7,647,724	1,012,276		
9400 Sale of or Compensation for Loss of Fixed Assets					
9710 Transfers from Component Units					
9720 Transfers from Primary Governments					
9910 Other Financing Sources Not Listed in the 9000 Series					
9990 Insurance Recoveries					
5120 Debt Service – Refunded Bonds					
5150 Bond Discounts					
5200 Interfund Transfers – Out					
5300 Transfers Out to Component Units/Primary Governments					
<b>Total Other Financing Sources (Uses)</b>		<b>\$7,647,724</b>	<b>\$1,012,276</b>		

Amounts Expressed in Whole Dollars	<u>Total Governmental Funds</u>
<b>Revenues</b>	
6000 Revenue from Local Sources	122,019,797
7000 Revenue from State Sources	40,860,976
8000 Revenue from Federal Sources	1,271,381
<b>Total Revenues</b>	<b>\$164,152,154</b>
<b>Expenditures</b>	
1000 Instruction	102,430,121
2000 Support Services	42,936,049
3000 Operation of Non-Instructional Services	2,676,645
4000 Facilities Acquisition, Construction and Improvement Services	8,445,773
5110 Debt Service	11,285,900
5130 Refund of Prior Year Revenues / Receipts	336,616
5140 Leases and Other Right-to-Use Arrangements	378,277
<b>Total Expenditures</b>	<b>\$168,489,381</b>
<b>Excess (Deficiency) Of Revenues Over Expenditures</b>	<b>(\$4,337,227)</b>
<b>Other Financing Sources (Uses)</b>	
9110 Face Value of Bonds Issued	
9120 Proceeds from Refunding of Bonds	
9130 Bond Premiums	
9200 Proceeds from Extended Term Financing, Leases, and Other Right-to-Use Arrangements	763,721
9300 Interfund Transfers - IN	8,771,000
9400 Sale of or Compensation for Loss of Fixed Assets	
9710 Transfers from Component Units	
9720 Transfers from Primary Governments	
9910 Other Financing Sources Not Listed in the 9000 Series	
9990 Insurance Recoveries	2,740
5120 Debt Service – Refunded Bonds	
5150 Bond Discounts	
5200 Interfund Transfers – Out	8,771,000
5300 Transfers Out to Component Units/Primary Governments	
<b>Total Other Financing Sources (Uses)</b>	<b>\$766,461</b>

Amounts Expressed in Whole Dollars	<u>General Fund</u> <u>(10)</u>	<u>Student Sponsored</u> <u>Activity Fund</u> <u>(21)</u>	<u>Public Purpose Trust</u> <u>(27)</u>	<u>Other Compt Approved</u> <u>(28)</u>	<u>Athletic / Activity</u> <u>(29)</u>
<b>Special And Extraordinary Items</b>					
9920 Special Items – Gains					
9930 Extraordinary Items – Gains					
5520 Special Items – Losses					
5530 Extraordinary Items – Losses					
<b>Net Change In Fund Balances</b>	<b>(\$5,378,290)</b>		<b>\$112,415</b>		
<b>Fund Balance</b>					
0001 Fund Balance - Beginning of Fiscal Year	45,770,469		61,812		
<b>Fund Balance - End Of Year</b>	<b>\$40,392,179</b>		<b>\$174,227</b>		

Amounts Expressed in Whole Dollars	<u>Capital Reserve (690.</u> <u>1850)</u> <u>(31)</u>	<u>Capital Reserve (1431)</u> <u>(32)</u>	<u>Other Capital Projects</u> <u>Fund</u> <u>(39)</u>	<u>Debt Service</u> <u>(40)</u>	<u>Permanent</u> <u>(90)</u>
<b>Special And Extraordinary Items</b>					
9920 Special Items – Gains					
9930 Extraordinary Items – Gains					
5520 Special Items – Losses					
5530 Extraordinary Items – Losses					
<b>Net Change In Fund Balances</b>		<b>\$2,744,206</b>	<b>(\$1,049,097)</b>		
<b>Fund Balance</b>					
0001 Fund Balance - Beginning of Fiscal Year		30,719,367	3,032,580		
<b>Fund Balance - End Of Year</b>		<b>\$33,463,573</b>	<b>\$1,983,483</b>		

Amounts Expressed in Whole Dollars	<u>Total Governmental Funds</u>
<b>Special And Extraordinary Items</b>	
9920 Special Items – Gains	
9930 Extraordinary Items – Gains	
5520 Special Items – Losses	
5530 Extraordinary Items – Losses	
<b>Net Change In Fund Balances</b>	<b>(\$3,570,766)</b>
<b>Fund Balance</b>	
0001 Fund Balance - Beginning of Fiscal Year	79,584,228
<b>Fund Balance - End Of Year</b>	<b>\$76,013,462</b>

Amounts Expressed in Whole Dollars	<u>Food Service</u> <u>(51)</u>	<u>Child Care</u> <u>Operations</u> <u>(52)</u>	<u>Other Enterprise</u> <u>(58)</u>	<u>TOTAL</u>	<u>Internal Service</u> <u>(60)</u>
<b>Assets And Deferred Outflows Of Resources</b>					
<b>Current Assets</b>					
0100 Cash and Cash Equivalents	2,447,838			2,447,838	
0110 Investments	1,623,485			1,623,485	
0130 Due From Other Funds					
0141 Due From Other Governments	466,736			466,736	
0142 State Revenue Receivable					
0143 Federal Revenue Receivable					
0146 Due from Primary Government					
0147 Due from Component Unit					
0150 Other Receivables					
0170 Inventories	47,982			47,982	
0180 Prepaid Expenses (Expenditures)					
0190 Other Current Assets					
<b>Total Current Assets</b>	<b>\$4,586,041</b>			<b>\$4,586,041</b>	
<b>Noncurrent Assets</b>					
0211 Land					
0212 Site Improvements (Net)					
0220 Buildings and Building Improvements (Net)					
0230 Tangible Property and Intangible Right-To-Use Assets (Net)	812,463			812,463	
0250 Construction in Progress					
0260 Long Term Prepayments					
0290 Other Noncurrent Assets					
<b>Total Noncurrent Assets</b>	<b>\$812,463</b>			<b>\$812,463</b>	
0910 Deferred Outflows of Resources	778,116			778,116	
<b>Total Assets And Deferred Outflows Of Resources</b>	<b>\$6,176,620</b>			<b>\$6,176,620</b>	

Amounts Expressed in Whole Dollars	<u>Food Service</u> <u>(51)</u>	<u>Child Care</u> <u>Operations</u> <u>(52)</u>	<u>Other Enterprise</u> <u>(58)</u>	<u>TOTAL</u>	<u>Internal Service</u> <u>(60)</u>
<b>Liabilities And Deferred Inflows Of Resources And Net Position</b>					
<b>Current Liabilities</b>					
0400 Due to Other Funds	564,699			564,699	
0411 Due to Other Governments					
0413 Due to Component Unit					
0420 Accounts Payable	150,707			150,707	
0430 Contracts Payable					
0440 Current Portion of Long-Term Debt					
0450 Short-Term Payables					
0461 Accrued Salaries and Benefits					
0462 Payroll Deductions and Withholding					
0480 Unearned Revenues	26,696			26,696	
0490 Other Current Liabilities					
<b>Total Current Liabilities</b>	<b>\$742,102</b>			<b>\$742,102</b>	
<b>Noncurrent Liabilities</b>					
0510 Bonds Payable					
0520 Extended-Term Financing Agreements Payable					
0530 Lease and Other Right-To-Use Obligations					
0540 Accumulated Compensated Absences	3,712			3,712	
0550 Authority Lease Obligations					
0560 Other Post-Employment Benefits (OPEB)	159,360			159,360	
0570 Net Pension Liability	3,929,920			3,929,920	
0599 Other Noncurrent Liabilities					
<b>Total Noncurrent Liabilities</b>	<b>\$4,092,992</b>			<b>\$4,092,992</b>	
<b>Total Liabilities</b>	<b>\$4,835,094</b>			<b>\$4,835,094</b>	
0950 Deferred Inflows of Resources	85,540			85,540	
<b>Net Position</b>					
0791 Net Investment in Capital Assets	812,463			812,463	
0008 Restricted Net Position (0792 – 0798)					
0799 Unrestricted Net Position	443,523			443,523	
<b>Total Net Position</b>	<b>\$1,255,986</b>			<b>\$1,255,986</b>	
<b>Total Liabilities And Deferred Inflows Of Resources And Net Position</b>	<b>\$6,176,620</b>			<b>\$6,176,620</b>	

Amounts Expressed in Whole Dollars	<u>Food Service</u> <u>(51)</u>	<u>Child Care Operations</u> <u>(52)</u>	<u>Other Enterprise</u> <u>(58)</u>	<u>TOTAL</u>	<u>Internal Service</u> <u>(60)</u>
<b>Operating Revenues</b>					
6600 Food Service Revenue	2,129,009			2,129,009	
0071 Charges for Services					
0072 Other Operating Revenue					
<b>Total Operating Revenues</b>	<b>\$2,129,009</b>			<b>\$2,129,009</b>	
<b>Operating Expenses</b>					
100 Personnel Services – Salaries	1,329,970			1,329,970	
200 Personnel Services – Employee Benefits	576,300			576,300	
300 Purchased Professional and Technical Services	1,856			1,856	
400 Purchased Property Services	74,447			74,447	
500 Other Purchased Services	10,705			10,705	
600 Supplies	2,148,109			2,148,109	
740 Depreciation	125,144			125,144	
770 Amortization Expense					
810 Dues and Fees	509			509	
880 Refunds of Prior Years' Receipts					
890 Miscellaneous Expenditures					
<b>Total Operating Expenses</b>	<b>\$4,267,040</b>			<b>\$4,267,040</b>	
<b>Operating Income (Loss)</b>	<b>(\$2,138,031)</b>			<b>(\$2,138,031)</b>	
<b>Non Operating Revenues (Expenses)</b>					
6500 Earnings on Investments	120,716			120,716	
6830 Federal Revenue from Intermediary Sources					
6920 Contributions and Donations from Private Sources					
6930 Gains or Losses on Sale of Fixed Assets					
6991 Refunds of a Prior Year Expenditure					
7000 Revenue from State Sources	692,365			692,365	
8000 Revenue from Federal Sources	1,768,165			1,768,165	
9990 Insurance Recoveries					
820 Claims and Judgments Against the LEA					
830 Interest					
<b>TOTAL Non Operating Revenues (Expenses)</b>	<b>\$2,581,246</b>			<b>\$2,581,246</b>	
<b>Income (Loss) Before Contributions And Transfers</b>	<b>\$443,215</b>			<b>\$443,215</b>	

Amounts Expressed in Whole Dollars	<u>Food Service</u> <u>(51)</u>	<u>Child Care Operations</u> <u>(52)</u>	<u>Other Enterprise</u> <u>(58)</u>	<u>TOTAL</u>	<u>Internal Service</u> <u>(60)</u>
<b>Contributions, Transfers, and Special and Extraordinary Items</b>					
5200 Interfund Transfers – Out					
5300 Transfers Out to Component Units/Primary Governments					
5520 Special Items – Losses					
5530 Extraordinary Items – Losses					
9300 Interfund Transfers - IN					
9500 Capital Contributions					
9700 Transfers IN From Component Units/Primary Governments					
9920 Special Items – Gains					
9930 Extraordinary Items – Gains					
<b>Change In Net Position</b>	<b>\$443,215</b>			<b>\$443,215</b>	
0002 Net Position - Beginning of Fiscal Year	812,771			812,771	
0003 Accounting Changes / Residual Equity Transfers					
<b>Net Position - End Of Year</b>	<b>\$1,255,986</b>			<b>\$1,255,986</b>	

Amounts Expressed in Whole Dollars	<u>Food Service</u> <u>(51)</u>	<u>Child Care Operations</u> <u>(52)</u>	<u>Other Enterprise</u> <u>(58)</u>	<u>TOTAL</u>	<u>Internal Service(60)</u>
<b>Cash Flows From Operating Activities</b>					
0011 Cash Receipts From Users	2,137,093			2,137,093	
0012 Cash Receipts From Assessments Made to Other Funds					
0013 Cash Receipts From Earnings on Investments					
0014 Cash Receipts From Other Operating Revenue					
0015 Cash Payments To Employees For Services	1,923,256			1,923,256	
0016 Cash Payments For Insurance Claims					
0017 Cash Payments To Suppliers For Goods and Services	1,808,042			1,808,042	
0018 Cash Payments For Other Operating Expenses					
<b>Net Cash Provided By (Used For) Operating Activities</b>	<b>(\$1,594,205)</b>			<b>(\$1,594,205)</b>	
<b>Cash Flows From Non-Capital Financing Activities</b>					
0021 Receipts From Local Sources - 6000					
0022 Receipts From State Sources - 7000	692,365			692,365	
0023 Receipts From Federal Sources -8000	1,406,333			1,406,333	
0024 Notes and Loans Received (Repaid)					
0025 Interest Paid on Notes/Loans - 5100-830					
0026 Operating Transfers In (Out)/Residual Equity Trans					
0027 Operating Transfers In (Out) Primary Government / Comp Unit					
0028 Receipts From Refund of Prior Year Expenditures - 6991					
0029 Special and Extraordinary Gains (losses)					
0030 Receipts from Insurance Recoveries -9990					
<b>Net Cash Prov By (Used for) Non-Capital Financing Activities</b>	<b>\$2,098,698</b>			<b>\$2,098,698</b>	
<b>Cash Flows From Capital and Related Financing Activities</b>					
0031 Payments For Fac Acq, Const, and Imp - 4000	(122,540)			(122,540)	
0032 Proceeds from Disposal of Capital Assets					
0033 Proceeds From Extended Term Financing - 9200					
0034 Principal Paid on Financing Agreements					
0035 Interest Paid on Financing Agreements - 5100-830					
0036 (Inc) Dec in Contributed Capital					
<b>Net Cash Prov By (Used for) Capital and Related Financing Activities</b>	<b>(\$122,540)</b>			<b>(\$122,540)</b>	
<b>Cash Flows From Investing Activities</b>					
0041 Earnings on Investments - 6500	120,716			120,716	
0042 Purchase of Inv Securities / Deposits to Inv Pools	(1,623,485)			(1,623,485)	
0043 Receipts From Investment Pool Withdrawals					
0044 Proceeds from Sale and Maturity of Inv Securities					

LEA : 104107903 Seneca Valley SD

Printed 11/18/2024 3:08:52 PM

0045 Loans Received (Paid)

<b>Net Cash Prov By (Used for) Investing Activities</b>	<b>(\$1,502,769)</b>	<b>(\$1,502,769)</b>
---	----------------------	----------------------

	<u>Food Service</u> <u>(51)</u>	<u>Child Care Operations</u> <u>(52)</u>	<u>Other Enterprise</u> <u>(58)</u>	<u>TOTAL</u>	<u>Internal Service</u> <u>(60)</u>
<b>Net Increase (Decrease) in Cash Flows</b>	<b>(1,120,816)</b>			<b>(1,120,816)</b>	
0004 Cash and Cash Equivalents Beginning of Year	3,568,654			3,568,654	
<b>Cash and Cash Equivalents at Year End</b>	<b>\$2,447,838</b>			<b>\$2,447,838</b>	
<hr/>					
<b>Reconciliation of Operating Income (Loss) To Net Cash Provided by (Used For) Operating Activities</b>					
0005 Operating Income (Loss) per REP	(2,138,031)			(2,138,031)	
<b>Adjustments</b>					
0051 Depreciation and Net Amortization	109,779			109,779	
0052 Provision for Uncollectible Accounts					
0053 Other Adjustments	361,832			361,832	
<b>Effect of Changes in Assets, Liabilities, Deferred Outflows and Deferred Inflows</b>					
0054 (Inc) Dec In Accounts Receivable (0120-0150)					
0055 Advances to Other Funds	81,498			81,498	
0056 (Inc) Dec in Inventories (0170)	(7,823)			(7,823)	
0057 (Inc) Dec in Prepaid Expenses (0180)	8,084			8,084	
0058 (Inc) Dec in Other Current or Noncurrent Assets					
0064 Deferred Outflows (0910)	(40,669)			(40,669)	
0059 Inc (Dec) in Accounts Payable (0400-0450)	(3,958)			(3,958)	
0060 Inc (Dec) in Accrued Salaries/Benefits (0461)					
0065 Inc (Dec) in Net Pension Liabilities (0570)	75,340			75,340	
0066 Inc (Dec) in Other Postemp Benefit Oblig (0560)	140			140	
0061 Inc (Dec) in Payroll Deductions/Withholding (0462)					
0062 Inc (Dec) in Unearned Revenue (0480)	11,400			11,400	
0063 Inc (Dec) in Other Current or Noncurrent Liabilities	(137)			(137)	
0067 Deferred Inflows (0950)	(51,660)			(51,660)	
<b>Total Adjustments</b>	<b>\$543,826</b>			<b>\$543,826</b>	
<b>Cash Provided By (Used for) Total</b>	<b>(\$1,594,205)</b>			<b>(\$1,594,205)</b>	

**COMBINED STATEMENT OF CASH FLOWS**  
**SCHEDULE OF NONCASH INVESTING, CAPITAL, AND FINANCING ACTIVITIES**

Explanation of Transaction and Balance Sheet Effect	Amount
During the year, the District received \$361,832 of food commodities from the U.S. Department of Agriculture	361,832
<b>Total</b>	<b>\$361,832</b>

LEA : 104107903 Seneca Valley SD

Printed 11/18/2024 3:08:54 PM

Amounts Expressed in Whole Dollars

Private Purpose Trust  
(71)

Investment Trust  
(72)

Pension Trust  
(73)

Student Activity Custodial  
(81)

**Assets And Deferred Outflows Of Resources**

**Assets**

0100 Cash and Cash Equivalents				423,996
0110 Investments				
0130 Due From Other Funds				
0140 Due from Other Governments, Primary Government and Component Units				
0150 Other Receivables				
0170 Inventories				
0180 Prepaid Expenses (Expenditures)				
0190 Other Current Assets				
0220 Buildings and Building Improvements (Net)				
0230 Tangible Property and Intangible Right-To-Use Assets (Net)				

<b>Total Assets</b>				<b>\$423,996</b>
---------------------	--	--	--	------------------

0910 Deferred Outflows of Resources

<b>Total Assets And Deferred Outflows Of Resources</b>				<b>\$423,996</b>
--	--	--	--	------------------

LEA : 104107903 Seneca Valley SD

Printed 11/18/2024 3:08:54 PM

Amounts Expressed in Whole Dollars

Other Custodial      Fiduciary Component Units      Total Fiduciary Funds  
(89)                                      (98)

**Assets And Deferred Outflows Of Resources**

**Assets**

0100 Cash and Cash Equivalents			423,996
0110 Investments			
0130 Due From Other Funds			
0140 Due from Other Governments, Primary Government and Component Units			
0150 Other Receivables			
0170 Inventories			
0180 Prepaid Expenses (Expenditures)			
0190 Other Current Assets			
0220 Buildings and Building Improvements (Net)			
0230 Tangible Property and Intangible Right-To-Use Assets (Net)			

**Total Assets** **\$423,996**

0910 Deferred Outflows of Resources

**Total Assets And Deferred Outflows Of Resources** **\$423,996**

LEA : 104107903 Seneca Valley SD

Printed 11/18/2024 3:08:54 PM

Amounts Expressed in Whole Dollars

Private Purpose Trust  
(71)

Investment Trust  
(72)

Pension Trust  
(73)

Student Activity Custodial  
(81)

**Liabilities, Deferred Inflows Of Resources And Net Position**

**Liabilities**

- 0400 Due to Other Funds
- 0410 Due to Other Governments, Primary Government and Component Units
- 0420 Accounts Payable
- 0430 Contracts Payable
- 0450 Short-Term Payables
- 0460 Payroll Accruals and Withholdings
- 0480 Unearned Revenues
- 0490 Other Current Liabilities

**Total Liabilities**

- 0950 Deferred Inflows of Resources

**Net Position**

- 0791 Net Investment in Capital Assets
- 0009 Restricted Net Position (0792 – 0798) 423,996
- 0799 Unrestricted Net Position

**Total Net Position**

**\$423,996**

**Total Liabilities, Deferred Inflows Of Resources And Net Position**

**\$423,996**

LEA : 104107903 Seneca Valley SD

Printed 11/18/2024 3:08:54 PM

Amounts Expressed in Whole Dollars	<u>Other Custodial</u> <b>(89)</b>	<u>Fiduciary Component Units</u> <b>(98)</b>	<u>Total Fiduciary Funds</u>
<b>Liabilities, Deferred Inflows Of Resources And Net Position</b>			
<b>Liabilities</b>			
0400 Due to Other Funds			
0410 Due to Other Governments, Primary Government and Component Units			
0420 Accounts Payable			
0430 Contracts Payable			
0450 Short-Term Payables			
0460 Payroll Accruals and Withholdings			
0480 Unearned Revenues			
0490 Other Current Liabilities			
<b>Total Liabilities</b>			
0950 Deferred Inflows of Resources			
<b>Net Position</b>			
0791 Net Investment in Capital Assets			
0009 Restricted Net Position (0792 – 0798)			423,996
0799 Unrestricted Net Position			
<b>Total Net Position</b>			<b>\$423,996</b>
<b>Total Liabilities, Deferred Inflows Of Resources And Net Position</b>			<b>\$423,996</b>

Amounts Expressed in Whole Dollars	<u>Private Purpose Trust</u> (71)	<u>Investment Trust</u> (72)	<u>Pension Trust</u> (73)	<u>Student Activity</u> <u>Custodial</u> (81)	<u>Other Custodial</u> (89)	<u>Fiduciary Component</u> <u>Units</u> (98)
<b>Additions</b>						
0091 Gifts and Contributions						
0095 Net Investment Earnings						
0092 Other Additions				596,971		
<b>Deductions</b>						
0093 Scholarships Awarded						
0094 Other Deductions				546,120		
<b>Change In Net Position</b>				<b>\$50,851</b>		
0006 Net Position – Beginning of Fiscal Year				373,145		
0007 Net Position Held in Trust for Pension Benefits						
<b>Net Position - End of Fiscal Year</b>				<b>\$423,996</b>		

Amounts Expressed in Whole Dollars	<u>Total Fiduciary Funds</u>
<b>Additions</b>	
0091 Gifts and Contributions	
0095 Net Investment Earnings	
0092 Other Additions	596,971
<b>Deductions</b>	
0093 Scholarships Awarded	
0094 Other Deductions	546,120
<b>Change In Net Position</b>	<b>\$50,851</b>
0006 Net Position – Beginning of Fiscal Year	373,145
0007 Net Position Held in Trust for Pension Benefits	
<b>Net Position - End of Fiscal Year</b>	<b>\$423,996</b>

	<u>Revenue Reported In Current Year</u>	<u>Current Year Tax Accrual</u>	<u>Prior Year Tax Accrual</u>	<u>Taxes Collected In Current Year</u>
<b><u>Revenue from Local Sources</u></b>				
6111 Current Real Estate Taxes	89,453,210.34			89,453,210.34
6112 Interim Real Estate Taxes	849,164.64			849,164.64
6113 Public Utility Realty Taxes	90,997.65			90,997.65
6114 Payments in Lieu of Current Taxes - State / Local	364,960.44			364,960.44
6149 Current Act 511 Taxes, Other Flat Rate Assessments	203,549.85			203,549.85
6151 Current Act 511 Earned Income Taxes	14,698,685.85			14,698,685.85
6153 Current Act 511 Real Estate Transfer Taxes	3,065,915.26			3,065,915.26
6411 Delinquent Real Estate Taxes	800,224.24			800,224.24
6431 Delinquent Act 1 Earned Income Taxes	276,745.41			276,745.41
6440 Delinquent Local Enabling Taxes - Flat Rate Assessments	60,763.24			60,763.24
6500 Earnings on Investments	3,832,005.49			
6700 Revenues from LEA Activities	550,079.04			
6810 Revenue from Local Governmental Units	25,000.00			
6831 Federal Revenue Received from Other Pennsylvania Public LEAs	6,352.07			
6832 Federal IDEA Revenue Received as Pass Through	1,709,289.41			
6834 Federal ARP Act IDEA Preschool Revenue Received as Pass Through	0.03			
6910 Rentals	95,888.64			
6920 Contributions and Donations from Private Sources	53,370.48			
6941 Regular Day School Tuition	30,807.48			
6942 Summer School Tuition	21,893.43			
6944 Receipts from Other LEAs in Pennsylvania - Education	4,255,511.47			
6991 Refunds of a Prior Year Expenditure	138,134.13			
6999 Other Revenues Not Specified Above	112,011.33			
<b>TOTAL Revenue from Local Sources</b>	<b>\$120,694,559.92</b>			<b>\$109,864,216.92</b>

**Revenue Reported  
In Current Year**

**Revenue from State Sources**

7111 Basic Education Funding-Formula	16,770,935.42		
7160 Tuition for Orphans Subsidy	125,501.48		
7271 Special Education funds for School-Aged Pupils	4,108,341.29		
7311 Pupil Transportation Subsidy	2,170,651.41		
7312 Nonpublic and Charter School Pupil Transportation Subsidy	249,480.00		
7320 Rental and Sinking Fund Payments / Building Reimbursement Subsidy	76,143.61		
7330 Health Services (Medical, Dental, Nurse, Act 25)	162,781.77		
7340 State Property Tax Reduction Allocation	1,549,432.15		
7361 School Safety and Security Grants	154,256.12		
7505 Ready to Learn Block Grant	684,267.00		
7599 Other State Revenue Not Listed Elsewhere in the 7000 Series	30,946.40		
7810 State Share of Social Security and Medicare Taxes	2,688,740.85		
7820 State Share of Retirement Contributions	12,089,498.53		
<b>TOTAL Revenue from State Sources</b>	<b>\$40,860,976.03</b>		

**Revenue Reported  
In Current Year**

**Revenue from Federal Sources**

8190 Other Unrestricted Federal Grants-in-Aid Direct from the Federal Government	95,715.68		
8514 Title I - Improving the Academic Achievement of the Disadvantaged	290,370.24		
8515 Title II - Preparing, Training, and Recruiting High Quality Teachers and Principals	127,947.07		
8516 Title III - Language Instruction for English Learners and Immigrant Students	21,989.48		
8517 Title IV - 21st Century Schools	20,652.00		
8744 ARP ESSER - Elementary and Secondary School Emergency Relief Fund	430,571.36		
8751 ARP ESSER Learning Loss	64,537.27		
8752 ARP ESSER Summer Programs	23,614.52		
8754 ARP ESSER Homeless Children and Youth Funds	29,918.23		
8810 School-Based Access Medicaid Reimbursement Program (SBAP) Reimbursements (Access)	159,908.16		
8820 Medical Assistance Reimbursement for Administrative Claiming (Quarterly) Program	6,156.53		
<b>TOTAL Revenue from Federal Sources</b>	<b>\$1,271,380.54</b>		

**Revenue Reported  
In Current Year**

**Other Financing Sources**

9220 Leases and Other Right-to-Use Arrangements	763,721.29			
9990 Insurance Recoveries	2,740.00			
<b>TOTAL Other Financing Sources</b>	<b>\$766,461.29</b>			
<b>TOTAL FROM ALL SOURCES</b>	<b>\$163,593,377.78</b>			<b>\$109,864,216.92</b>

LEA : 104107903 Seneca Valley SD

Printed 11/18/2024 3:09:00 PM

	<u>General Fund (10)</u>	<u>Student Sponsored Activity Fund (21)</u>	<u>Public Purpose Trust (27)</u>	<u>Other Compt Approved (28)</u>	<u>Athletic / Activity (29)</u>	<u>Capital Reserve (690, 1850) (31)</u>
<b>6000 Revenue from Local Sources</b>						
6111 Current Real Estate Taxes	89,453,210.34					
6112 Interim Real Estate Taxes	849,164.64					
6113 Public Utility Realty Taxes	90,997.65					
6114 Payments in Lieu of Current Taxes - State / Local	364,960.44					
6149 Current Act 511 Taxes, Other Flat Rate Assessments	203,549.85					
6151 Current Act 511 Earned Income Taxes	14,698,685.85					
6153 Current Act 511 Real Estate Transfer Taxes	3,065,915.26					
6411 Delinquent Real Estate Taxes	800,224.24					
6431 Delinquent Act 1 Earned Income Taxes	276,745.41					
6440 Delinquent Local Enabling Taxes - Flat Rate Assessments	60,763.24					
6500 Earnings on Investments	3,832,005.49		1,550.00			
6700 Revenues from LEA Activities	550,079.04					
6810 Revenue from Local Governmental Units	25,000.00					
6831 Federal Revenue Received from Other Pennsylvania Public LEAs	6,352.07					
6832 Federal IDEA Revenue Received as Pass Through	1,709,289.41					
6834 Federal ARP Act IDEA Preschool Revenue Received as Pass Through	0.03					
6910 Rentals	95,888.64					
6920 Contributions and Donations from Private Sources	53,370.48					
6941 Regular Day School Tuition	30,807.48					
6942 Summer School Tuition	21,893.43					
6944 Receipts from Other LEAs in Pennsylvania - Education	4,255,511.47					
6991 Refunds of a Prior Year Expenditure	138,134.13					
6999 Other Revenues Not Specified Above	112,011.33					
<b>6000 Total Revenue from Local Sources</b>	<b>\$120,694,559.92</b>		<b>\$1,550.00</b>			
<b>7000 Revenue from State Sources</b>						
7111 Basic Education Funding-Formula	16,770,935.42					
7160 Tuition for Orphans Subsidy	125,501.48					
7271 Special Education funds for School-Aged Pupils	4,108,341.29					
7311 Pupil Transportation Subsidy	2,170,651.41					
7312 Nonpublic and Charter School Pupil Transportation Subsidy	249,480.00					
7320 Rental and Sinking Fund Payments / Building Reimbursement Subsidy	76,143.61					
7330 Health Services (Medical, Dental, Nurse, Act 25)	162,781.77					
7340 State Property Tax Reduction Allocation	1,549,432.15					
7361 School Safety and Security Grants	154,256.12					

LEA : 104107903 Seneca Valley SD

Printed 11/18/2024 3:09:00 PM

	<u>Capital Reserve</u> <u>(1431) (32)</u>	<u>Other Capital</u> <u>Projects Fund (39)</u>	<u>Debt Service (40)</u>	<u>Permanent (90)</u>	<u>Total</u>
<b>6000 Revenue from Local Sources</b>					
6111 Current Real Estate Taxes					89,453,210.34
6112 Interim Real Estate Taxes					849,164.64
6113 Public Utility Realty Taxes					90,997.65
6114 Payments in Lieu of Current Taxes - State / Local					364,960.44
6149 Current Act 511 Taxes, Other Flat Rate Assessments					203,549.85
6151 Current Act 511 Earned Income Taxes					14,698,685.85
6153 Current Act 511 Real Estate Transfer Taxes					3,065,915.26
6411 Delinquent Real Estate Taxes					800,224.24
6431 Delinquent Act 1 Earned Income Taxes					276,745.41
6440 Delinquent Local Enabling Taxes - Flat Rate Assessments					60,763.24
6500 Earnings on Investments	1,142,905.00	180,782.23			5,157,242.72
6700 Revenues from LEA Activities					550,079.04
6810 Revenue from Local Governmental Units					25,000.00
6831 Federal Revenue Received from Other Pennsylvania Public LEAs					6,352.07
6832 Federal IDEA Revenue Received as Pass Through					1,709,289.41
6834 Federal ARP Act IDEA Preschool Revenue Received as Pass Through					0.03
6910 Rentals					95,888.64
6920 Contributions and Donations from Private Sources					53,370.48
6941 Regular Day School Tuition					30,807.48
6942 Summer School Tuition					21,893.43
6944 Receipts from Other LEAs in Pennsylvania - Education					4,255,511.47
6991 Refunds of a Prior Year Expenditure					138,134.13
6999 Other Revenues Not Specified Above					112,011.33
<b>6000 Total Revenue from Local Sources</b>	<b>\$1,142,905.00</b>	<b>\$180,782.23</b>			<b>\$122,019,797.15</b>
<b>7000 Revenue from State Sources</b>					
7111 Basic Education Funding-Formula					16,770,935.42
7160 Tuition for Orphans Subsidy					125,501.48
7271 Special Education funds for School-Aged Pupils					4,108,341.29
7311 Pupil Transportation Subsidy					2,170,651.41
7312 Nonpublic and Charter School Pupil Transportation Subsidy					249,480.00
7320 Rental and Sinking Fund Payments / Building Reimbursement Subsidy					76,143.61
7330 Health Services (Medical, Dental, Nurse, Act 25)					162,781.77
7340 State Property Tax Reduction Allocation					1,549,432.15
7361 School Safety and Security Grants					154,256.12

LEA : 104107903 Seneca Valley SD

Printed 11/18/2024 3:09:00 PM

	<u>General Fund (10)</u>	<u>Student Sponsored Activity Fund (21)</u>	<u>Public Purpose Trust (27)</u>	<u>Other Compt Approved (28)</u>	<u>Athletic / Activity (29)</u>	<u>Capital Reserve (690.1850) (31)</u>
<b>7000 Revenue from State Sources</b>						
7505 Ready to Learn Block Grant	684,267.00					
7599 Other State Revenue Not Listed Elsewhere in the 7000 Series	30,946.40					
7810 State Share of Social Security and Medicare Taxes	2,688,740.85					
7820 State Share of Retirement Contributions	12,089,498.53					
<b>7000 Total Revenue from State Sources</b>	<b>\$40,860,976.03</b>					
<b>8000 Revenue from Federal Sources</b>						
8190 Other Unrestricted Federal Grants-in-Aid Direct from the Federal Government	95,715.68					
8514 Title I - Improving the Academic Achievement of the Disadvantaged	290,370.24					
8515 Title II - Preparing, Training, and Recruiting High Quality Teachers and Principals	127,947.07					
8516 Title III - Language Instruction for English Learners and Immigrant Students	21,989.48					
8517 Title IV - 21st Century Schools	20,652.00					
8744 ARP ESSER - Elementary and Secondary School Emergency Relief Fund	430,571.36					
8751 ARP ESSER Learning Loss	64,537.27					
8752 ARP ESSER Summer Programs	23,614.52					
8754 ARP ESSER Homeless Children and Youth Funds	29,918.23					
8810 School-Based Access Medicaid Reimbursement Program (SBAP) Reimbursements (Access)	159,908.16					
8820 Medical Assistance Reimbursement for Administrative Claiming (Quarterly) Program	6,156.53					
<b>8000 Total Revenue from Federal Sources</b>	<b>\$1,271,380.54</b>					
<b>9000 Other Financing Sources</b>						
9220 Leases and Other Right-to-Use Arrangements	763,721.29					
9310 General Fund Transfers			111,000.00			
9990 Insurance Recoveries	2,740.00					
<b>9000 Total Other Financing Sources</b>	<b>\$766,461.29</b>		<b>\$111,000.00</b>			
<b>Total From All Sources</b>	<b>\$163,593,377.78</b>		<b>\$112,550.00</b>			

LEA : 104107903 Seneca Valley SD

Printed 11/18/2024 3:09:00 PM

	<u>Capital Reserve</u> <u>(1431) (32)</u>	<u>Other Capital</u> <u>Projects Fund (39)</u>	<u>Debt Service (40)</u>	<u>Permanent (90)</u>	<u>Total</u>
<b>7000 Revenue from State Sources</b>					
7505 Ready to Learn Block Grant					684,267.00
7599 Other State Revenue Not Listed Elsewhere in the 7000 Series					30,946.40
7810 State Share of Social Security and Medicare Taxes					2,688,740.85
7820 State Share of Retirement Contributions					12,089,498.53
<b>7000 Total Revenue from State Sources</b>					<b>\$40,860,976.03</b>
<b>8000 Revenue from Federal Sources</b>					
8190 Other Unrestricted Federal Grants-in-Aid Direct from the Federal Government					95,715.68
8514 Title I - Improving the Academic Achievement of the Disadvantaged					290,370.24
8515 Title II - Preparing, Training, and Recruiting High Quality Teachers and Principals					127,947.07
8516 Title III - Language Instruction for English Learners and Immigrant Students					21,989.48
8517 Title IV - 21st Century Schools					20,652.00
8744 ARP ESSER - Elementary and Secondary School Emergency Relief Fund					430,571.36
8751 ARP ESSER Learning Loss					64,537.27
8752 ARP ESSER Summer Programs					23,614.52
8754 ARP ESSER Homeless Children and Youth Funds					29,918.23
8810 School-Based Access Medicaid Reimbursement Program (SBAP) Reimbursements (Access)					159,908.16
8820 Medical Assistance Reimbursement for Administrative Claiming (Quarterly) Program					6,156.53
<b>8000 Total Revenue from Federal Sources</b>					<b>\$1,271,380.54</b>
<b>9000 Other Financing Sources</b>					
9220 Leases and Other Right-to-Use Arrangements					763,721.29
9310 General Fund Transfers	7,647,724.00	1,012,276.00			8,771,000.00
9990 Insurance Recoveries					2,740.00
<b>9000 Total Other Financing Sources</b>	<b>\$7,647,724.00</b>	<b>\$1,012,276.00</b>			<b>\$9,537,461.29</b>
<b>Total From All Sources</b>	<b>\$8,790,629.00</b>	<b>\$1,193,058.23</b>			<b>\$173,689,615.01</b>

	<u>General Fund (10)</u>	<u>Student Sponsored Activity Fund (21)</u>	<u>Public Purpose Trust (27)</u>	<u>Other Compt Approved (28)</u>	<u>Athletic / Activity (29)</u>	<u>Capital Reserve (690. 1850) (31)</u>
Revenue from Local Sources	120,694,559.92			1,550.00		
Revenue from State Sources	40,860,976.03					
Revenue from Federal Sources	1,271,380.54					
Other Financing Sources	766,461.29		111,000.00			
<b>Total From All Sources</b>	<b>\$163,593,377.78</b>		<b>\$112,550.00</b>			

	<u>Capital Reserve (1431)</u> <u>(32)</u>	<u>Other Capital Projects</u> <u>Fund (39)</u>	<u>Debt Service (40)</u>	<u>Permanent (90)</u>	<u>Total</u>
Revenue from Local Sources	1,142,905.00	180,782.23			122,019,797.15
Revenue from State Sources					40,860,976.03
Revenue from Federal Sources					1,271,380.54
Other Financing Sources	7,647,724.00	1,012,276.00			9,537,461.29
<b>Total From All Sources</b>	<b>\$8,790,629.00</b>	<b>\$1,193,058.23</b>			<b>\$173,689,615.01</b>

**General Fund (10)**

	<u>Total</u>
<b>1000 Instruction</b>	
<b>100 Personnel Services – Salaries</b>	
100 Personnel Services – Salaries	55,322,762.47
<b>Total Personnel Services – Salaries</b>	<b>\$55,322,762.47</b>
<b>200 Personnel Services – Employee Benefits</b>	
210 Group Insurance – Contracted Provider	11,138,181.54
220 Social Security Contributions	4,431,291.92
230 PSERS Retirement Contributions	19,456,350.34
250 Unemployment Compensation	37,386.11
260 Workers’ Compensation	215,868.87
280 Other Post-Employment Benefits (OPEB)	61,580.00
<b>Total Personnel Services – Employee Benefits</b>	<b>\$35,340,658.78</b>
<b>300 Purchased Professional and Technical Services</b>	
322 Professional Educational Services – Ius	351,348.89
323 Professional Educational Services – Other Educational Agencies	20,405.00
329 Professional Educational Services – Other	863,581.84
330 Other Professional Services	960,999.32
360 Employee Training and Development Services	16,865.25
<b>Total Purchased Professional and Technical Services</b>	<b>\$2,213,200.30</b>
<b>400 Purchased Property Services</b>	
430 Repairs and Maintenance Services	37,249.78
440 Rentals	161,648.93
<b>Total Purchased Property Services</b>	<b>\$198,898.71</b>
<b>500 Other Purchased Services</b>	
510 Student Transportation Services	17,005.37
561 Tuition To Other School Districts Within the State	128,593.30
562 Tuition To Pennsylvania Charter Schools	2,129,685.09
563 Tuition To Nonpublic Schools	2,216,700.33
564 Tuition To Career and Technology Centers	716,260.21
567 Tuition To Approved Private Schools (APS) and PA Chartered Schools for the Deaf and Blind	728,895.94
568 Tuition To Private Residential Rehabilitative Institutions (PRRI) [In-State] and Detention Centers	2,261.98
580 Travel	35,897.13
<b>Total Other Purchased Services</b>	<b>\$5,975,299.35</b>
<b>600 Supplies</b>	
610 General Supplies	896,956.03
620 Energy	3,149.89
640 Books and Periodicals	176,873.32
650 Supplies & Fees – Technology Related	1,411,351.33
<b>Total Supplies</b>	<b>\$2,488,330.57</b>
<b>700 Property</b>	
739 Leases - Other	763,721.29
762 Capitalized Equipment - Replacement	61,829.59
<b>Total Property</b>	<b>\$825,550.88</b>

**General Fund (10)**

<b>1000 Instruction</b>	<b><u>Total</u></b>
<b>800 <u>Other Objects</u></b>	
810 Dues and Fees	4,604.00
890 Miscellaneous Expenditures	60,815.51
<b>Total Other Objects</b>	<b>\$65,419.51</b>
<b>Total 1000 Instruction</b>	<b>\$102,430,120.57</b>

**General Fund (10)**

**1100 Regular Programs – Elementary / Secondary**

	<u>Elementary</u>	<u>Secondary</u>	<u>Federal</u>	<u>Total</u>
<b>100 Personnel Services – Salaries</b>				
100 Personnel Services – Salaries	20,786,247.48	18,905,640.40	639,916.57	40,331,804.45
<b>Total Personnel Services – Salaries</b>	<b>\$20,786,247.48</b>	<b>\$18,905,640.40</b>	<b>\$639,916.57</b>	<b>\$40,331,804.45</b>
<b>200 Personnel Services – Employee Benefits</b>				
210 Group Insurance – Contracted Provider	4,505,629.96	3,615,666.20	79,460.82	8,200,756.98
220 Social Security Contributions	1,708,843.72	1,493,737.12	13,618.47	3,216,199.31
230 PSERS Retirement Contributions	7,528,483.13	6,658,482.96	31,332.70	14,218,298.79
250 Unemployment Compensation	7,967.45	22,852.32	364.35	31,184.12
260 Workers' Compensation	74,157.83	76,939.47	993.18	152,090.48
280 Other Post-Employment Benefits (OPEB)	20,330.00	33,750.00		54,080.00
<b>Total Personnel Services – Employee Benefits</b>	<b>\$13,845,412.09</b>	<b>\$11,901,428.07</b>	<b>\$125,769.52</b>	<b>\$25,872,609.68</b>
<b>300 Purchased Professional and Technical Services</b>				
322 Professional Educational Services – Ius	2,551.40			2,551.40
329 Professional Educational Services – Other		164,011.32		164,011.32
<b>Total Purchased Professional and Technical Services</b>	<b>\$2,551.40</b>	<b>\$164,011.32</b>		<b>\$166,562.72</b>
<b>400 Purchased Property Services</b>				
430 Repairs and Maintenance Services	30,718.37	5,993.29		36,711.66
440 Rentals	85,154.67	76,494.26		161,648.93
<b>Total Purchased Property Services</b>	<b>\$115,873.04</b>	<b>\$82,487.55</b>		<b>\$198,360.59</b>
<b>500 Other Purchased Services</b>				
510 Student Transportation Services	9,088.81	(438.82)	1,213.66	9,863.65
562 Tuition To Pennsylvania Charter Schools	323,423.51	752,947.57		1,076,371.08
580 Travel	3,578.11	29,536.04		33,114.15
<b>Total Other Purchased Services</b>	<b>\$336,090.43</b>	<b>\$782,044.79</b>	<b>\$1,213.66</b>	<b>\$1,119,348.88</b>
<b>600 Supplies</b>				
610 General Supplies	382,317.32	259,113.79	90,577.21	732,008.32
640 Books and Periodicals	122,152.63	44,913.41		167,066.04
650 Supplies & Fees – Technology Related	13,140.00	1,398,211.33		1,411,351.33
<b>Total Supplies</b>	<b>\$517,609.95</b>	<b>\$1,702,238.53</b>	<b>\$90,577.21</b>	<b>\$2,310,425.69</b>
<b>700 Property</b>				
739 Leases - Other	381,860.65	381,860.64		763,721.29
762 Capitalized Equipment - Replacement	20,012.07			20,012.07
<b>Total Property</b>	<b>\$401,872.72</b>	<b>\$381,860.64</b>		<b>\$783,733.36</b>
<b>800 Other Objects</b>				
810 Dues and Fees		118.00		118.00
890 Miscellaneous Expenditures	121.00	60,694.51		60,815.51
<b>Total Other Objects</b>	<b>\$121.00</b>	<b>\$60,812.51</b>		<b>\$60,933.51</b>
<b>Total 1100 Regular Programs – Elementary / Secondary</b>	<b>\$36,005,778.11</b>	<b>\$33,980,523.81</b>	<b>\$857,476.96</b>	<b>\$70,843,778.88</b>

**General Fund (10)**

**1110 Regular Programs**

	<u>Elementary</u>	<u>Secondary</u>	<u>Federal</u>	<u>Total</u>
<b>100 Personnel Services – Salaries</b>				
100 Personnel Services – Salaries	20,786,247.48	18,905,640.40	14,514.72	39,706,402.60
<b>Total Personnel Services – Salaries</b>	<b>\$20,786,247.48</b>	<b>\$18,905,640.40</b>	<b>\$14,514.72</b>	<b>\$39,706,402.60</b>
<b>200 Personnel Services – Employee Benefits</b>				
210 Group Insurance – Contracted Provider	4,505,629.96	3,615,666.20		8,121,296.16
220 Social Security Contributions	1,708,843.72	1,493,737.12	969.65	3,203,550.49
230 PSERS Retirement Contributions	7,528,483.13	6,658,482.96	2,740.00	14,189,706.09
250 Unemployment Compensation	7,967.45	22,852.32		30,819.77
260 Workers' Compensation	74,157.83	76,939.47	5.18	151,102.48
280 Other Post-Employment Benefits (OPEB)	20,330.00	33,750.00		54,080.00
<b>Total Personnel Services – Employee Benefits</b>	<b>\$13,845,412.09</b>	<b>\$11,901,428.07</b>	<b>\$3,714.83</b>	<b>\$25,750,554.99</b>
<b>300 Purchased Professional and Technical Services</b>				
322 Professional Educational Services – Ius	2,551.40			2,551.40
329 Professional Educational Services – Other		164,011.32		164,011.32
<b>Total Purchased Professional and Technical Services</b>	<b>\$2,551.40</b>	<b>\$164,011.32</b>		<b>\$166,562.72</b>
<b>400 Purchased Property Services</b>				
430 Repairs and Maintenance Services	30,718.37	5,993.29		36,711.66
440 Rentals	85,154.67	76,494.26		161,648.93
<b>Total Purchased Property Services</b>	<b>\$115,873.04</b>	<b>\$82,487.55</b>		<b>\$198,360.59</b>
<b>500 Other Purchased Services</b>				
510 Student Transportation Services	9,088.81	(438.82)		8,649.99
562 Tuition To Pennsylvania Charter Schools	323,423.51	752,947.57		1,076,371.08
580 Travel	3,578.11	29,536.04		33,114.15
<b>Total Other Purchased Services</b>	<b>\$336,090.43</b>	<b>\$782,044.79</b>		<b>\$1,118,135.22</b>
<b>600 Supplies</b>				
610 General Supplies	382,317.32	259,113.79		641,431.11
640 Books and Periodicals	122,152.63	44,913.41		167,066.04
650 Supplies & Fees – Technology Related	13,140.00	1,398,211.33		1,411,351.33
<b>Total Supplies</b>	<b>\$517,609.95</b>	<b>\$1,702,238.53</b>		<b>\$2,219,848.48</b>
<b>700 Property</b>				
739 Leases - Other	381,860.65	381,860.64		763,721.29
762 Capitalized Equipment - Replacement	20,012.07			20,012.07
<b>Total Property</b>	<b>\$401,872.72</b>	<b>\$381,860.64</b>		<b>\$783,733.36</b>
<b>800 Other Objects</b>				
810 Dues and Fees		118.00		118.00
890 Miscellaneous Expenditures	121.00	60,694.51		60,815.51
<b>Total Other Objects</b>	<b>\$121.00</b>	<b>\$60,812.51</b>		<b>\$60,933.51</b>
<b>Total 1110 Regular Programs</b>	<b>\$36,005,778.11</b>	<b>\$33,980,523.81</b>	<b>\$18,229.55</b>	<b>\$70,004,531.47</b>

**General Fund (10)**

**1190 Federally-Funded Regular Programs**

	<u>Elementary</u>	<u>Secondary</u>	<u>Federal</u>	<u>Total</u>
<b>100 Personnel Services – Salaries</b>				
100 Personnel Services – Salaries			625,401.85	625,401.85
<b>Total Personnel Services – Salaries</b>			<b>\$625,401.85</b>	<b>\$625,401.85</b>
<b>200 Personnel Services – Employee Benefits</b>				
210 Group Insurance – Contracted Provider			79,460.82	79,460.82
220 Social Security Contributions			12,648.82	12,648.82
230 PSERS Retirement Contributions			28,592.70	28,592.70
250 Unemployment Compensation			364.35	364.35
260 Workers' Compensation			988.00	988.00
<b>Total Personnel Services – Employee Benefits</b>			<b>\$122,054.69</b>	<b>\$122,054.69</b>
<b>500 Other Purchased Services</b>				
510 Student Transportation Services			1,213.66	1,213.66
<b>Total Other Purchased Services</b>			<b>\$1,213.66</b>	<b>\$1,213.66</b>
<b>600 Supplies</b>				
610 General Supplies			90,577.21	90,577.21
<b>Total Supplies</b>			<b>\$90,577.21</b>	<b>\$90,577.21</b>
<b>Total 1190 Federally-Funded Regular Programs</b>			<b>\$839,247.41</b>	<b>\$839,247.41</b>

**General Fund (10)**

**1200 Special Programs – Elementary / Secondary**

	<u>Elementary</u>	<u>Secondary</u>	<u>Federal</u>	<u>Total</u>
<b>100 Personnel Services – Salaries</b>				
100 Personnel Services – Salaries	5,931,250.65	6,164,482.11	479,263.38	12,574,996.14
<b>Total Personnel Services – Salaries</b>	<b>\$5,931,250.65</b>	<b>\$6,164,482.11</b>	<b>\$479,263.38</b>	<b>\$12,574,996.14</b>
<b>200 Personnel Services – Employee Benefits</b>				
210 Group Insurance – Contracted Provider	1,043,191.02	1,307,893.19	112,999.94	2,464,084.15
220 Social Security Contributions	489,023.81	504,518.88	27,345.28	1,020,887.97
230 PSERS Retirement Contributions	2,103,647.58	2,227,903.66	60,088.80	4,391,640.04
250 Unemployment Compensation	2,951.00	2,406.11	125.01	5,482.12
260 Workers' Compensation	30,067.09	26,813.60	394.30	57,274.99
280 Other Post-Employment Benefits (OPEB)	7,500.00			7,500.00
<b>Total Personnel Services – Employee Benefits</b>	<b>\$3,676,380.50</b>	<b>\$4,069,535.44</b>	<b>\$200,953.33</b>	<b>\$7,946,869.27</b>
<b>300 Purchased Professional and Technical Services</b>				
322 Professional Educational Services – Ius	71,106.20	48,707.70	210,952.35	330,766.25
323 Professional Educational Services – Other Educational Agencies	20,405.00			20,405.00
329 Professional Educational Services – Other	375,773.73	301,252.49	13,873.80	690,900.02
330 Other Professional Services	491,376.81	467,562.51	2,060.00	960,999.32
<b>Total Purchased Professional and Technical Services</b>	<b>\$958,661.74</b>	<b>\$817,522.70</b>	<b>\$226,886.15</b>	<b>\$2,003,070.59</b>
<b>500 Other Purchased Services</b>				
510 Student Transportation Services	97.99	7,043.73		7,141.72
561 Tuition To Other School Districts Within the State	46,773.34	75,097.10		121,870.44
562 Tuition To Pennsylvania Charter Schools	407,648.12	645,665.89		1,053,314.01
563 Tuition To Nonpublic Schools	67,134.23	1,082,007.21	969,193.51	2,118,334.95
567 Tuition To Approved Private Schools (APS) and PA Chartered Schools for the Deaf and Blind	410,097.95	318,797.99		728,895.94
580 Travel	1,554.95	1,228.03		2,782.98
<b>Total Other Purchased Services</b>	<b>\$933,306.58</b>	<b>\$2,129,839.95</b>	<b>\$969,193.51</b>	<b>\$4,032,340.04</b>
<b>600 Supplies</b>				
610 General Supplies	42,310.31	46,286.53		88,596.84
620 Energy		3,149.89		3,149.89
640 Books and Periodicals	424.59	9,382.69		9,807.28
<b>Total Supplies</b>	<b>\$42,734.90</b>	<b>\$58,819.11</b>		<b>\$101,554.01</b>
<b>700 Property</b>				
762 Capitalized Equipment - Replacement		41,817.52		41,817.52
<b>Total Property</b>		<b>\$41,817.52</b>		<b>\$41,817.52</b>
<b>800 Other Objects</b>				
810 Dues and Fees	2,003.00	2,483.00		4,486.00
<b>Total Other Objects</b>	<b>\$2,003.00</b>	<b>\$2,483.00</b>		<b>\$4,486.00</b>
<b>Total 1200 Special Programs – Elementary / Secondary</b>	<b>\$11,544,337.37</b>	<b>\$13,284,499.83</b>	<b>\$1,876,296.37</b>	<b>\$26,705,133.57</b>

**General Fund (10)**

**1210 Life Skills Support**

	<u>Elementary</u>	<u>Secondary</u>	<u>Federal</u>	<u>Total</u>
<b>100 Personnel Services – Salaries</b>				
100 Personnel Services – Salaries	137,182.82	170,910.60		308,093.42
<b>Total Personnel Services – Salaries</b>	<b>\$137,182.82</b>	<b>\$170,910.60</b>		<b>\$308,093.42</b>
<b>200 Personnel Services – Employee Benefits</b>				
210 Group Insurance – Contracted Provider	54,532.80	45,575.13		100,107.93
220 Social Security Contributions	23,170.28	29,583.02		52,753.30
230 PSERS Retirement Contributions	103,642.22	129,049.59		232,691.81
250 Unemployment Compensation	75.21	99.16		174.37
260 Workers' Compensation		321.81		321.81
<b>Total Personnel Services – Employee Benefits</b>	<b>\$181,420.51</b>	<b>\$204,628.71</b>		<b>\$386,049.22</b>
<b>300 Purchased Professional and Technical Services</b>				
322 Professional Educational Services – lus	1,500.00	500.00		2,000.00
<b>Total Purchased Professional and Technical Services</b>	<b>\$1,500.00</b>	<b>\$500.00</b>		<b>\$2,000.00</b>
<b>500 Other Purchased Services</b>				
563 Tuition To Nonpublic Schools		146,708.96	200,429.44	347,138.40
<b>Total Other Purchased Services</b>		<b>\$146,708.96</b>	<b>\$200,429.44</b>	<b>\$347,138.40</b>
<b>Total 1210 Life Skills Support</b>	<b>\$320,103.33</b>	<b>\$522,748.27</b>	<b>\$200,429.44</b>	<b>\$1,043,281.04</b>

**General Fund (10)**

	<u>Elementary</u>	<u>Secondary</u>	<u>Federal</u>	<u>Total</u>
<b>1220 Sensory Support</b>				
<b>100 Personnel Services – Salaries</b>				
100 Personnel Services – Salaries	854,591.58	289,523.01		1,144,114.59
<b>Total Personnel Services – Salaries</b>	<b>\$854,591.58</b>	<b>\$289,523.01</b>		<b>\$1,144,114.59</b>
<b>200 Personnel Services – Employee Benefits</b>				
210 Group Insurance – Contracted Provider	199,150.50	81,469.92		280,620.42
220 Social Security Contributions	69,086.02	26,049.37		95,135.39
230 PSERS Retirement Contributions	290,561.66	115,778.01		406,339.67
250 Unemployment Compensation	217.81	87.52		305.33
260 Workers' Compensation	2,277.03	1,285.09		3,562.12
<b>Total Personnel Services – Employee Benefits</b>	<b>\$561,293.02</b>	<b>\$224,669.91</b>		<b>\$785,962.93</b>
<b>300 Purchased Professional and Technical Services</b>				
322 Professional Educational Services – lus	50,799.70	47,607.70		98,407.40
323 Professional Educational Services – Other Educational Agencies	20,405.00			20,405.00
329 Professional Educational Services – Other	87,151.34	223,565.06		310,716.40
<b>Total Purchased Professional and Technical Services</b>	<b>\$158,356.04</b>	<b>\$271,172.76</b>		<b>\$429,528.80</b>
<b>600 Supplies</b>				
610 General Supplies	2,280.59	677.47		2,958.06
<b>Total Supplies</b>	<b>\$2,280.59</b>	<b>\$677.47</b>		<b>\$2,958.06</b>
<b>800 Other Objects</b>				
810 Dues and Fees	2,003.00	928.00		2,931.00
<b>Total Other Objects</b>	<b>\$2,003.00</b>	<b>\$928.00</b>		<b>\$2,931.00</b>
<b>Total 1220 Sensory Support</b>	<b>\$1,578,524.23</b>	<b>\$786,971.15</b>		<b>\$2,365,495.38</b>

**General Fund (10)**

**1230 Emotional Support**

	<u>Elementary</u>	<u>Secondary</u>	<u>Federal</u>	<u>Total</u>
<b>100 Personnel Services – Salaries</b>				
100 Personnel Services – Salaries	408,777.49	666,537.99	361,895.25	1,437,210.73
<b>Total Personnel Services – Salaries</b>	<b>\$408,777.49</b>	<b>\$666,537.99</b>	<b>\$361,895.25</b>	<b>\$1,437,210.73</b>
<b>200 Personnel Services – Employee Benefits</b>				
210 Group Insurance – Contracted Provider	125,214.18	164,683.86	95,567.74	385,465.78
220 Social Security Contributions	51,066.79	59,448.54	22,566.96	133,082.29
230 PSERS Retirement Contributions	216,957.42	279,330.65	49,177.28	545,465.35
250 Unemployment Compensation	183.60	214.89	100.01	498.50
260 Workers' Compensation	1,155.08	1,264.82	389.12	2,809.02
<b>Total Personnel Services – Employee Benefits</b>	<b>\$394,577.07</b>	<b>\$504,942.76</b>	<b>\$167,801.11</b>	<b>\$1,067,320.94</b>
<b>300 Purchased Professional and Technical Services</b>				
322 Professional Educational Services – lus	1,150.00			1,150.00
329 Professional Educational Services – Other	1,150.00			1,150.00
<b>Total Purchased Professional and Technical Services</b>	<b>\$2,300.00</b>			<b>\$2,300.00</b>
<b>500 Other Purchased Services</b>				
563 Tuition To Nonpublic Schools	67,097.24	808,265.93	768,764.07	1,644,127.24
580 Travel	217.98			217.98
<b>Total Other Purchased Services</b>	<b>\$67,315.22</b>	<b>\$808,265.93</b>	<b>\$768,764.07</b>	<b>\$1,644,345.22</b>
<b>600 Supplies</b>				
610 General Supplies	1,780.50	1,354.50		3,135.00
<b>Total Supplies</b>	<b>\$1,780.50</b>	<b>\$1,354.50</b>		<b>\$3,135.00</b>
<b>Total 1230 Emotional Support</b>	<b>\$874,750.28</b>	<b>\$1,981,101.18</b>	<b>\$1,298,460.43</b>	<b>\$4,154,311.89</b>

LEA : 104107903 Seneca Valley SD

Printed 11/18/2024 3:09:07 PM

**General Fund (10)**

**1240 Academic Support**

	<u>Elementary</u>	<u>Secondary</u>	<u>Federal</u>	<u>Total</u>
<b>100 Personnel Services – Salaries</b>				
100 Personnel Services – Salaries	4,287,853.12	4,482,064.17	21,721.92	8,791,639.21
<b>Total Personnel Services – Salaries</b>	<b>\$4,287,853.12</b>	<b>\$4,482,064.17</b>	<b>\$21,721.92</b>	<b>\$8,791,639.21</b>
<b>200 Personnel Services – Employee Benefits</b>				
210 Group Insurance – Contracted Provider	637,204.57	938,684.87		1,575,889.44
220 Social Security Contributions	327,465.72	340,870.27	307.25	668,643.24
230 PSERS Retirement Contributions	1,409,035.35	1,497,328.76	1,378.28	2,907,742.39
250 Unemployment Compensation	2,359.61	1,715.45		4,075.06
260 Workers' Compensation	26,426.79	21,773.11	5.18	48,205.08
280 Other Post-Employment Benefits (OPEB)	7,500.00			7,500.00
<b>Total Personnel Services – Employee Benefits</b>	<b>\$2,409,992.04</b>	<b>\$2,800,372.46</b>	<b>\$1,690.71</b>	<b>\$5,212,055.21</b>
<b>300 Purchased Professional and Technical Services</b>				
322 Professional Educational Services – Ius	17,656.50	600.00	199,099.35	217,355.85
329 Professional Educational Services – Other	2,403.80	2,403.80	373.80	5,181.40
330 Other Professional Services	490,916.81	467,102.51		958,019.32
<b>Total Purchased Professional and Technical Services</b>	<b>\$510,977.11</b>	<b>\$470,106.31</b>	<b>\$199,473.15</b>	<b>\$1,180,556.57</b>
<b>500 Other Purchased Services</b>				
510 Student Transportation Services	97.99	3,896.68		3,994.67
561 Tuition To Other School Districts Within the State	46,773.34	75,097.10		121,870.44
562 Tuition To Pennsylvania Charter Schools	407,648.12	645,665.89		1,053,314.01
563 Tuition To Nonpublic Schools		127,032.32		127,032.32
580 Travel	1,336.97	1,228.03		2,565.00
<b>Total Other Purchased Services</b>	<b>\$455,856.42</b>	<b>\$852,920.02</b>		<b>\$1,308,776.44</b>
<b>600 Supplies</b>				
610 General Supplies	37,686.45	37,895.51		75,581.96
640 Books and Periodicals	424.59	9,382.69		9,807.28
<b>Total Supplies</b>	<b>\$38,111.04</b>	<b>\$47,278.20</b>		<b>\$85,389.24</b>
<b>700 Property</b>				
762 Capitalized Equipment - Replacement		41,817.52		41,817.52
<b>Total Property</b>		<b>\$41,817.52</b>		<b>\$41,817.52</b>
<b>800 Other Objects</b>				
810 Dues and Fees		1,555.00		1,555.00
<b>Total Other Objects</b>		<b>\$1,555.00</b>		<b>\$1,555.00</b>
<b>Total 1240 Academic Support</b>	<b>\$7,702,789.73</b>	<b>\$8,696,113.68</b>	<b>\$222,885.78</b>	<b>\$16,621,789.19</b>

**General Fund (10)**

	<u>Elementary</u>	<u>Secondary</u>	<u>Federal</u>	<u>Total</u>
<b>1241 Learning Support – Public</b>				
<b>100 Personnel Services – Salaries</b>				
100 Personnel Services – Salaries	3,568,617.94	3,902,458.30	21,721.92	7,492,798.16
<b>Total Personnel Services – Salaries</b>	<b>\$3,568,617.94</b>	<b>\$3,902,458.30</b>	<b>\$21,721.92</b>	<b>\$7,492,798.16</b>
<b>200 Personnel Services – Employee Benefits</b>				
210 Group Insurance – Contracted Provider	551,937.69	767,821.87		1,319,759.56
220 Social Security Contributions	272,735.63	297,079.54	307.25	570,122.42
230 PSERS Retirement Contributions	1,166,890.39	1,300,681.97	1,378.28	2,468,950.64
250 Unemployment Compensation	2,183.67	1,569.43		3,753.10
260 Workers' Compensation	23,875.93	19,726.83	5.18	43,607.94
280 Other Post-Employment Benefits (OPEB)	7,500.00			7,500.00
<b>Total Personnel Services – Employee Benefits</b>	<b>\$2,025,123.31</b>	<b>\$2,386,879.64</b>	<b>\$1,690.71</b>	<b>\$4,413,693.66</b>
<b>300 Purchased Professional and Technical Services</b>				
322 Professional Educational Services – Ius	17,656.50	600.00	199,099.35	217,355.85
329 Professional Educational Services – Other	2,403.80	2,403.80	373.80	5,181.40
330 Other Professional Services	490,916.81	467,102.51		958,019.32
<b>Total Purchased Professional and Technical Services</b>	<b>\$510,977.11</b>	<b>\$470,106.31</b>	<b>\$199,473.15</b>	<b>\$1,180,556.57</b>
<b>500 Other Purchased Services</b>				
510 Student Transportation Services	97.99			97.99
561 Tuition To Other School Districts Within the State	46,773.34	75,097.10		121,870.44
562 Tuition To Pennsylvania Charter Schools	407,648.12	645,665.89		1,053,314.01
563 Tuition To Nonpublic Schools		127,032.32		127,032.32
580 Travel	1,232.17	1,228.03		2,460.20
<b>Total Other Purchased Services</b>	<b>\$455,751.62</b>	<b>\$849,023.34</b>		<b>\$1,304,774.96</b>
<b>600 Supplies</b>				
610 General Supplies	36,387.39	35,952.99		72,340.38
640 Books and Periodicals	424.59	9,382.69		9,807.28
<b>Total Supplies</b>	<b>\$36,811.98</b>	<b>\$45,335.68</b>		<b>\$82,147.66</b>
<b>700 Property</b>				
762 Capitalized Equipment - Replacement		41,817.52		41,817.52
<b>Total Property</b>		<b>\$41,817.52</b>		<b>\$41,817.52</b>
<b>Total 1241 Learning Support – Public</b>	<b>\$6,597,281.96</b>	<b>\$7,695,620.79</b>	<b>\$222,885.78</b>	<b>\$14,515,788.53</b>

**General Fund (10)**

**1243 Gifted Support**

	<u>Elementary</u>	<u>Secondary</u>	<u>Federal</u>	<u>Total</u>
<b>100 Personnel Services – Salaries</b>				
100 Personnel Services – Salaries	719,235.18	579,605.87		1,298,841.05
<b>Total Personnel Services – Salaries</b>	<b>\$719,235.18</b>	<b>\$579,605.87</b>		<b>\$1,298,841.05</b>
<b>200 Personnel Services – Employee Benefits</b>				
210 Group Insurance – Contracted Provider	85,266.88	170,863.00		256,129.88
220 Social Security Contributions	54,730.09	43,790.73		98,520.82
230 PSERS Retirement Contributions	242,144.96	196,646.79		438,791.75
250 Unemployment Compensation	175.94	146.02		321.96
260 Workers' Compensation	2,550.86	2,046.28		4,597.14
<b>Total Personnel Services – Employee Benefits</b>	<b>\$384,868.73</b>	<b>\$413,492.82</b>		<b>\$798,361.55</b>
<b>500 Other Purchased Services</b>				
510 Student Transportation Services		3,896.68		3,896.68
580 Travel	104.80			104.80
<b>Total Other Purchased Services</b>	<b>\$104.80</b>	<b>\$3,896.68</b>		<b>\$4,001.48</b>
<b>600 Supplies</b>				
610 General Supplies	1,299.06	1,942.52		3,241.58
<b>Total Supplies</b>	<b>\$1,299.06</b>	<b>\$1,942.52</b>		<b>\$3,241.58</b>
<b>800 Other Objects</b>				
810 Dues and Fees		1,555.00		1,555.00
<b>Total Other Objects</b>		<b>\$1,555.00</b>		<b>\$1,555.00</b>
<b>Total 1243 Gifted Support</b>	<b>\$1,105,507.77</b>	<b>\$1,000,492.89</b>		<b>\$2,106,000.66</b>

**General Fund (10)**

**1270 Multi-Handicapped Support**

	<u>Elementary</u>	<u>Secondary</u>	<u>Federal</u>	<u>Total</u>
<b>100 Personnel Services – Salaries</b>				
100 Personnel Services – Salaries	242,845.64	244,049.79	59,657.89	546,553.32
<b>Total Personnel Services – Salaries</b>	<b>\$242,845.64</b>	<b>\$244,049.79</b>	<b>\$59,657.89</b>	<b>\$546,553.32</b>
<b>200 Personnel Services – Employee Benefits</b>				
210 Group Insurance – Contracted Provider	27,088.97	31,384.53	17,432.20	75,905.70
220 Social Security Contributions	18,235.00	16,989.21	4,471.07	39,695.28
230 PSERS Retirement Contributions	83,450.93	69,980.76	9,533.24	162,964.93
250 Unemployment Compensation	114.77	114.34	25.00	254.11
260 Workers' Compensation	208.19	262.92		471.11
<b>Total Personnel Services – Employee Benefits</b>	<b>\$129,097.86</b>	<b>\$118,731.76</b>	<b>\$31,461.51</b>	<b>\$279,291.13</b>
<b>500 Other Purchased Services</b>				
563 Tuition To Nonpublic Schools	36.99			36.99
<b>Total Other Purchased Services</b>	<b>\$36.99</b>			<b>\$36.99</b>
<b>600 Supplies</b>				
610 General Supplies	562.77	2,295.07		2,857.84
620 Energy		3,149.89		3,149.89
<b>Total Supplies</b>	<b>\$562.77</b>	<b>\$5,444.96</b>		<b>\$6,007.73</b>
<b>Total 1270 Multi-Handicapped Support</b>	<b>\$372,543.26</b>	<b>\$368,226.51</b>	<b>\$91,119.40</b>	<b>\$831,889.17</b>

General Fund (10)

1280 Early Intervention Support

Elementary

Secondary

Federal

Total

300 Purchased Professional and Technical Services

322 Professional Educational Services – lus

11,853.00

11,853.00

**Total Purchased Professional and Technical Services**

**\$11,853.00**

**\$11,853.00**

**Total 1280 Early Intervention Support**

**\$11,853.00**

**\$11,853.00**

**General Fund (10)**

	<u>Elementary</u>	<u>Secondary</u>	<u>Federal</u>	<u>Total</u>
<b>1290 Special Programs - Other Support</b>				
<b>100 Personnel Services – Salaries</b>				
100 Personnel Services – Salaries		311,396.55	35,988.32	347,384.87
<b>Total Personnel Services – Salaries</b>		<b>\$311,396.55</b>	<b>\$35,988.32</b>	<b>\$347,384.87</b>
<b>200 Personnel Services – Employee Benefits</b>				
210 Group Insurance – Contracted Provider		46,094.88		46,094.88
220 Social Security Contributions		31,578.47		31,578.47
230 PSERS Retirement Contributions		136,435.89		136,435.89
250 Unemployment Compensation		174.75		174.75
260 Workers' Compensation		1,905.85		1,905.85
<b>Total Personnel Services – Employee Benefits</b>		<b>\$216,189.84</b>		<b>\$216,189.84</b>
<b>300 Purchased Professional and Technical Services</b>				
329 Professional Educational Services – Other	285,068.59	75,283.63	13,500.00	373,852.22
330 Other Professional Services	460.00	460.00	2,060.00	2,980.00
<b>Total Purchased Professional and Technical Services</b>	<b>\$285,528.59</b>	<b>\$75,743.63</b>	<b>\$15,560.00</b>	<b>\$376,832.22</b>
<b>500 Other Purchased Services</b>				
510 Student Transportation Services		3,147.05		3,147.05
567 Tuition To Approved Private Schools (APS) and PA Chartered Schools for the Deaf and Blind	410,097.95	318,797.99		728,895.94
<b>Total Other Purchased Services</b>	<b>\$410,097.95</b>	<b>\$321,945.04</b>		<b>\$732,042.99</b>
<b>600 Supplies</b>				
610 General Supplies		4,063.98		4,063.98
<b>Total Supplies</b>		<b>\$4,063.98</b>		<b>\$4,063.98</b>
<b>Total 1290 Special Programs - Other Support</b>	<b>\$695,626.54</b>	<b>\$929,339.04</b>	<b>\$51,548.32</b>	<b>\$1,676,513.90</b>

**General Fund (10)**

**1300 Vocational Education**

	<u>Elementary</u>	<u>Secondary</u>	<u>Federal</u>	<u>Total</u>
<b>100 Personnel Services – Salaries</b>				
100 Personnel Services – Salaries		2,227,330.34		2,227,330.34
<b>Total Personnel Services – Salaries</b>		<b>\$2,227,330.34</b>		<b>\$2,227,330.34</b>
<b>200 Personnel Services – Employee Benefits</b>				
210 Group Insurance – Contracted Provider		454,455.29		454,455.29
220 Social Security Contributions		179,770.72		179,770.72
230 PSERS Retirement Contributions		791,146.32		791,146.32
250 Unemployment Compensation		693.05		693.05
260 Workers' Compensation		5,911.63		5,911.63
<b>Total Personnel Services – Employee Benefits</b>		<b>\$1,431,977.01</b>		<b>\$1,431,977.01</b>
<b>400 Purchased Property Services</b>				
430 Repairs and Maintenance Services		538.12		538.12
<b>Total Purchased Property Services</b>		<b>\$538.12</b>		<b>\$538.12</b>
<b>500 Other Purchased Services</b>				
564 Tuition To Career and Technology Centers		716,260.21		716,260.21
<b>Total Other Purchased Services</b>		<b>\$716,260.21</b>		<b>\$716,260.21</b>
<b>600 Supplies</b>				
610 General Supplies		76,350.87		76,350.87
<b>Total Supplies</b>		<b>\$76,350.87</b>		<b>\$76,350.87</b>
<b>Total 1300 Vocational Education</b>		<b>\$4,452,456.55</b>		<b>\$4,452,456.55</b>

**General Fund (10)**

	<u>Elementary</u>	<u>Secondary</u>	<u>Federal</u>	<u>Total</u>
<b>1400 Other Instructional Programs – Elementary / Secondary</b>				
<b>100 Personnel Services – Salaries</b>				
100 Personnel Services – Salaries	2,980.12	135,677.17	49,974.25	188,631.54
<b>Total Personnel Services – Salaries</b>	<b>\$2,980.12</b>	<b>\$135,677.17</b>	<b>\$49,974.25</b>	<b>\$188,631.54</b>
<b>200 Personnel Services – Employee Benefits</b>				
210 Group Insurance – Contracted Provider		18,885.12		18,885.12
220 Social Security Contributions	227.98	10,375.51	3,830.43	14,433.92
230 PSERS Retirement Contributions	1,013.24	45,756.31	8,495.64	55,265.19
250 Unemployment Compensation		26.82		26.82
260 Workers' Compensation		569.53	22.24	591.77
<b>Total Personnel Services – Employee Benefits</b>	<b>\$1,241.22</b>	<b>\$75,613.29</b>	<b>\$12,348.31</b>	<b>\$89,202.82</b>
<b>500 Other Purchased Services</b>				
561 Tuition To Other School Districts Within the State		6,722.86		6,722.86
563 Tuition To Nonpublic Schools		98,365.38		98,365.38
568 Tuition To Private Residential Rehabilitative Institutions (PRRI) [In-State] and Detention Centers		2,261.98		2,261.98
<b>Total Other Purchased Services</b>		<b>\$107,350.22</b>		<b>\$107,350.22</b>
<b>Total 1400 Other Instructional Programs – Elementary / Secondary</b>	<b>\$4,221.34</b>	<b>\$318,640.68</b>	<b>\$62,322.56</b>	<b>\$385,184.58</b>

**General Fund (10)**

**1420 Summer School**

	<u>Elementary</u>	<u>Secondary</u>	<u>Federal</u>	<u>Total</u>
<b>100 Personnel Services – Salaries</b>				
100 Personnel Services – Salaries	450.12	31,299.28	49,313.00	81,062.40
<b>Total Personnel Services – Salaries</b>	<b>\$450.12</b>	<b>\$31,299.28</b>	<b>\$49,313.00</b>	<b>\$81,062.40</b>
<b>200 Personnel Services – Employee Benefits</b>				
220 Social Security Contributions	34.44	2,392.10	3,772.46	6,199.00
230 PSERS Retirement Contributions	153.04	10,267.76	8,383.23	18,804.03
250 Unemployment Compensation		1.81		1.81
260 Workers' Compensation		53.32	22.24	75.56
<b>Total Personnel Services – Employee Benefits</b>	<b>\$187.48</b>	<b>\$12,714.99</b>	<b>\$12,177.93</b>	<b>\$25,080.40</b>
<b>Total 1420 Summer School</b>	<b>\$637.60</b>	<b>\$44,014.27</b>	<b>\$61,490.93</b>	<b>\$106,142.80</b>

**General Fund (10)**

**1430 Homebound Instruction**

**100 Personnel Services – Salaries**

100 Personnel Services – Salaries

**Total Personnel Services – Salaries**

**200 Personnel Services – Employee Benefits**

220 Social Security Contributions

230 PSERS Retirement Contributions

260 Workers' Compensation

**Total Personnel Services – Employee Benefits**

**Total 1430 Homebound Instruction**

	<u>Elementary</u>	<u>Secondary</u>	<u>Federal</u>	<u>Total</u>
	2,530.00	2,141.89		4,671.89
	<b>\$2,530.00</b>	<b>\$2,141.89</b>		<b>\$4,671.89</b>
	193.54	162.59		356.13
	860.20	728.23		1,588.43
		5.10		5.10
	<b>\$1,053.74</b>	<b>\$895.92</b>		<b>\$1,949.66</b>
	<b>\$3,583.74</b>	<b>\$3,037.81</b>		<b>\$6,621.55</b>

**General Fund (10)**

1440 Alternative Regular Education Programs	<u>Elementary</u>	<u>Secondary</u>	<u>Federal</u>	<u>Total</u>
<b>100 Personnel Services – Salaries</b>				
100 Personnel Services – Salaries		102,236.00		102,236.00
<b>Total Personnel Services – Salaries</b>		<b>\$102,236.00</b>		<b>\$102,236.00</b>
<b>200 Personnel Services – Employee Benefits</b>				
210 Group Insurance – Contracted Provider		18,885.12		18,885.12
220 Social Security Contributions		7,820.82		7,820.82
230 PSERS Retirement Contributions		34,760.32		34,760.32
250 Unemployment Compensation		25.01		25.01
260 Workers' Compensation		511.11		511.11
<b>Total Personnel Services – Employee Benefits</b>		<b>\$62,002.38</b>		<b>\$62,002.38</b>
<b>500 Other Purchased Services</b>				
561 Tuition To Other School Districts Within the State		6,722.86		6,722.86
563 Tuition To Nonpublic Schools		98,365.38		98,365.38
568 Tuition To Private Residential Rehabilitative Institutions (PRRI) [In-State] and Detention Centers		2,261.98		2,261.98
<b>Total Other Purchased Services</b>		<b>\$107,350.22</b>		<b>\$107,350.22</b>
<b>Total 1440 Alternative Regular Education Programs</b>		<b>\$271,588.60</b>		<b>\$271,588.60</b>

LEA : 104107903 Seneca Valley SD

Printed 11/18/2024 3:09:07 PM

General Fund (10)

1441 Adjudicated / Court-Placed Programs

Elementary

Secondary

Federal

Total

500 Other Purchased Services

563 Tuition To Nonpublic Schools

15,847.82

15,847.82

**Total Other Purchased Services**

**\$15,847.82**

**\$15,847.82**

**Total 1441 Adjudicated / Court-Placed Programs**

**\$15,847.82**

**\$15,847.82**

**General Fund (10)**

**1442 Alternative Education Programs**

**100 Personnel Services – Salaries**

100 Personnel Services – Salaries

**Total Personnel Services – Salaries**

**200 Personnel Services – Employee Benefits**

210 Group Insurance – Contracted Provider

220 Social Security Contributions

230 PSERS Retirement Contributions

250 Unemployment Compensation

260 Workers' Compensation

**Total Personnel Services – Employee Benefits**

**500 Other Purchased Services**

561 Tuition To Other School Districts Within the State

563 Tuition To Nonpublic Schools

568 Tuition To Private Residential Rehabilitative Institutions (PRRI) [In-State] and Detention Centers

**Total Other Purchased Services**

**Total 1442 Alternative Education Programs**

	<u>Elementary</u>	<u>Secondary</u>	<u>Federal</u>	<u>Total</u>
		102,236.00		102,236.00
<b>Total Personnel Services – Salaries</b>		<b>\$102,236.00</b>		<b>\$102,236.00</b>
		18,885.12		18,885.12
		7,820.82		7,820.82
		34,760.32		34,760.32
		25.01		25.01
		511.11		511.11
<b>Total Personnel Services – Employee Benefits</b>		<b>\$62,002.38</b>		<b>\$62,002.38</b>
		6,722.86		6,722.86
		82,517.56		82,517.56
		2,261.98		2,261.98
<b>Total Other Purchased Services</b>		<b>\$91,502.40</b>		<b>\$91,502.40</b>
<b>Total 1442 Alternative Education Programs</b>		<b>\$255,740.78</b>		<b>\$255,740.78</b>

General Fund (10)

	<u>Elementary</u>	<u>Secondary</u>	<u>Federal</u>	<u>Total</u>
<b>1450 Instructional Programs Outside the Established School Day</b>				
<b>100 Personnel Services – Salaries</b>				
100 Personnel Services – Salaries			661.25	661.25
<b>Total Personnel Services – Salaries</b>			<b>\$661.25</b>	<b>\$661.25</b>
<b>200 Personnel Services – Employee Benefits</b>				
220 Social Security Contributions			57.97	57.97
230 PSERS Retirement Contributions			112.41	112.41
<b>Total Personnel Services – Employee Benefits</b>			<b>\$170.38</b>	<b>\$170.38</b>
<b>Total 1450 Instructional Programs Outside the Established School Day</b>			<b>\$831.63</b>	<b>\$831.63</b>

General Fund (10)

1500 Nonpublic School Programs

300 Purchased Professional and Technical Services

322 Professional Educational Services – Ius

329 Professional Educational Services – Other

360 Employee Training and Development Services

Elementary

Secondary

Federal

Total

18,031.24 18,031.24

8,670.50 8,670.50

16,865.25 16,865.25

**Total Purchased Professional and Technical Services**

**\$43,566.99 \$43,566.99**

**Total 1500 Nonpublic School Programs**

**\$43,566.99 \$43,566.99**

LEA : 104107903 Seneca Valley SD

Printed 11/18/2024 3:09:24 PM

**General Fund (10)**

**2000 Support Services**

**Total**

**100 Personnel Services – Salaries**

100 Personnel Services – Salaries 14,640,916.93

**Total Personnel Services – Salaries \$14,640,916.93**

**200 Personnel Services – Employee Benefits**

210 Group Insurance – Contracted Provider 3,078,059.01

220 Social Security Contributions 1,094,164.12

230 PSERS Retirement Contributions 4,923,399.24

240 Tuition Reimbursement 321,016.03

250 Unemployment Compensation 5,064.16

260 Workers' Compensation 36,149.79

280 Other Post-Employment Benefits (OPEB) 91,595.00

**Total Personnel Services – Employee Benefits \$9,549,447.35**

**300 Purchased Professional and Technical Services**

310 Official / Administrative Services 61,318.31

329 Professional Educational Services – Other 1,664,922.37

330 Other Professional Services 336,202.07

340 Technical Services 90,541.82

360 Employee Training and Development Services 49,131.17

390 Other Purchased Professional and Technical Services 25,086.62

**Total Purchased Professional and Technical Services \$2,227,202.36**

**400 Purchased Property Services**

410 Cleaning Services 2,198,658.40

420 Utility Services 270,014.08

430 Repairs and Maintenance Services 746,998.81

440 Rentals 5,401.84

490 Other Purchased Property Services 19,277.35

**Total Purchased Property Services \$3,240,350.48**

**500 Other Purchased Services**

510 Student Transportation Services 5,953.82

513 Contracted Carriers 8,102,289.40

516 Student Transportation Services From the IU 3,012.26

520 Insurance – General 103,499.75

521 Fire Insurance 282,683.00

522 Automotive Liability Insurance 9,516.00

523 General Property and Liability Insurance 10,244.00

530 Communications 231,025.41

549 Other Advertising/Public Relations 5,567.80

550 Printing and Binding 28,272.03

580 Travel 30,322.48

595 IU Payments By Withholding 155,199.94

**Total Other Purchased Services \$8,967,585.89**

**600 Supplies**

610 General Supplies 806,936.41

620 Energy 1,366,700.34

LEA : 104107903 Seneca Valley SD

Printed 11/18/2024 3:09:24 PM

General Fund (10)

2000 Support Services

Total

600 Supplies

640 Books and Periodicals	19,614.52
650 Supplies & Fees – Technology Related	1,736,037.68

<b>Total Supplies</b>	<b>\$3,929,288.95</b>
-----------------------	-----------------------

700 Property

752 Capital Equipment – Original and Additional	50,239.72
756 Capitalized Technology Equipment – Original	150,000.00
762 Capitalized Equipment - Replacement	56,588.45

<b>Total Property</b>	<b>\$256,828.17</b>
-----------------------	---------------------

800 Other Objects

810 Dues and Fees	70,225.26
820 Claims and Judgments Against the LEA	46,725.00
890 Miscellaneous Expenditures	7,443.64

<b>Total Other Objects</b>	<b>\$124,393.90</b>
----------------------------	---------------------

<b>Total 2000 Support Services</b>	<b>\$42,936,014.03</b>
------------------------------------	------------------------

LEA : 104107903 Seneca Valley SD

Printed 11/18/2024 3:09:24 PM

**General Fund (10)**

**2100 Support Services – Students**

	<u>Elementary</u>	<u>Secondary</u>	<u>Federal</u>	<u>Total</u>
<b>100 Personnel Services – Salaries</b>				
100 Personnel Services – Salaries	1,330,363.34	1,747,381.98	12,368.56	3,138,497.64
<b>Total Personnel Services – Salaries</b>	<b>\$1,330,363.34</b>	<b>\$1,747,381.98</b>	<b>\$12,368.56</b>	<b>\$3,138,497.64</b>
<b>200 Personnel Services – Employee Benefits</b>				
210 Group Insurance – Contracted Provider	232,586.78	338,858.30	43.80	594,231.59
220 Social Security Contributions	109,915.38	134,942.72	946.16	249,262.42
230 PSERS Retirement Contributions	488,328.34	605,386.06		1,109,976.80
250 Unemployment Compensation	437.68	556.86	30.95	1,050.79
260 Workers' Compensation	2,641.09	4,809.20		7,450.29
280 Other Post-Employment Benefits (OPEB)	8,000.00	4,000.00		12,000.00
<b>Total Personnel Services – Employee Benefits</b>	<b>\$841,909.27</b>	<b>\$1,088,553.14</b>	<b>\$1,020.91</b>	<b>\$1,973,971.89</b>
<b>300 Purchased Professional and Technical Services</b>				
329 Professional Educational Services – Other	84,135.49	79,722.94		163,858.43
<b>Total Purchased Professional and Technical Services</b>	<b>\$84,135.49</b>	<b>\$79,722.94</b>		<b>\$163,858.43</b>
<b>500 Other Purchased Services</b>				
510 Student Transportation Services	3,575.63	2,378.19		5,953.82
580 Travel	151.09	1,359.87	18.34	1,529.30
<b>Total Other Purchased Services</b>	<b>\$3,726.72</b>	<b>\$3,738.06</b>	<b>\$18.34</b>	<b>\$7,483.12</b>
<b>600 Supplies</b>				
610 General Supplies	15,843.04	9,480.70		25,323.74
640 Books and Periodicals	69.00	164.00	1,425.91	1,658.91
<b>Total Supplies</b>	<b>\$15,912.04</b>	<b>\$9,644.70</b>	<b>\$1,425.91</b>	<b>\$26,982.65</b>
<b>800 Other Objects</b>				
810 Dues and Fees	762.50	1,250.50		2,013.00
<b>Total Other Objects</b>	<b>\$762.50</b>	<b>\$1,250.50</b>		<b>\$2,013.00</b>
<b>Total 2100 Support Services – Students</b>	<b>\$2,276,809.36</b>	<b>\$2,930,291.32</b>	<b>\$14,833.72</b>	<b>\$5,312,806.73</b>

**General Fund (10)**

**2110 Supervision of Student Services**

**100 Personnel Services – Salaries**

	<u>Elementary</u>	<u>Secondary</u>	<u>Federal</u>	<u>Total</u>
100 Personnel Services – Salaries	70,306.56	69,481.07		139,787.63
<b>Total Personnel Services – Salaries</b>	<b>\$70,306.56</b>	<b>\$69,481.07</b>		<b>\$139,787.63</b>

**200 Personnel Services – Employee Benefits**

210 Group Insurance – Contracted Provider	10,770.06	10,770.06		21,540.12
220 Social Security Contributions	5,047.43	5,047.12		10,094.55
230 PSERS Retirement Contributions	23,623.84	23,623.08		47,246.92
250 Unemployment Compensation	12.51	12.48		24.99
260 Workers' Compensation	187.72	187.20		374.92
<b>Total Personnel Services – Employee Benefits</b>	<b>\$39,641.56</b>	<b>\$39,639.94</b>		<b>\$79,281.50</b>
<b>Total 2110 Supervision of Student Services</b>	<b>\$109,948.12</b>	<b>\$109,121.01</b>		<b>\$219,069.13</b>

**General Fund (10)**

	<u>Elementary</u>	<u>Secondary</u>	<u>Federal</u>	<u>Total</u>
<b>2111 Supervision of Student Services – Head of Component</b>				
<b>100 Personnel Services – Salaries</b>				
100 Personnel Services – Salaries	37,512.25	37,512.25		75,024.50
<b>Total Personnel Services – Salaries</b>	<b>\$37,512.25</b>	<b>\$37,512.25</b>		<b>\$75,024.50</b>
<b>200 Personnel Services – Employee Benefits</b>				
210 Group Insurance – Contracted Provider	5,435.29	5,435.29		10,870.58
220 Social Security Contributions	2,710.35	2,710.21		5,420.56
230 PSERS Retirement Contributions	12,754.29	12,753.77		25,508.06
250 Unemployment Compensation	6.25	6.25		12.50
260 Workers' Compensation	187.72	187.20		374.92
<b>Total Personnel Services – Employee Benefits</b>	<b>\$21,093.90</b>	<b>\$21,092.72</b>		<b>\$42,186.62</b>
<b>Total 2111 Supervision of Student Services – Head of Component</b>	<b>\$58,606.15</b>	<b>\$58,604.97</b>		<b>\$117,211.12</b>

**General Fund (10)**

	<u>Elementary</u>	<u>Secondary</u>	<u>Federal</u>	<u>Total</u>
<b>2119 Supervision of Student Services – All Other Supervision</b>				
<b>100 Personnel Services – Salaries</b>				
100 Personnel Services – Salaries	32,794.31	31,968.82		64,763.13
<b>Total Personnel Services – Salaries</b>	<b>\$32,794.31</b>	<b>\$31,968.82</b>		<b>\$64,763.13</b>
<b>200 Personnel Services – Employee Benefits</b>				
210 Group Insurance – Contracted Provider	5,334.77	5,334.77		10,669.54
220 Social Security Contributions	2,337.08	2,336.91		4,673.99
230 PSERS Retirement Contributions	10,869.55	10,869.31		21,738.86
250 Unemployment Compensation	6.26	6.23		12.49
<b>Total Personnel Services – Employee Benefits</b>	<b>\$18,547.66</b>	<b>\$18,547.22</b>		<b>\$37,094.88</b>
<b>Total 2119 Supervision of Student Services – All Other Supervision</b>	<b>\$51,341.97</b>	<b>\$50,516.04</b>		<b>\$101,858.01</b>

**General Fund (10)**

	<u>Elementary</u>	<u>Secondary</u>	<u>Federal</u>	<u>Total</u>
<b>2120 Guidance Services</b>				
<b>100 Personnel Services – Salaries</b>				
100 Personnel Services – Salaries	799,502.87	1,442,333.14	12,368.56	2,254,204.57
<b>Total Personnel Services – Salaries</b>	<b>\$799,502.87</b>	<b>\$1,442,333.14</b>	<b>\$12,368.56</b>	<b>\$2,254,204.57</b>
<b>200 Personnel Services – Employee Benefits</b>				
210 Group Insurance – Contracted Provider	100,176.00	270,348.11	43.80	370,567.91
220 Social Security Contributions	60,659.06	113,303.79	946.16	174,909.01
230 PSERS Retirement Contributions	267,375.18	507,742.46		775,117.64
250 Unemployment Compensation	218.20	437.51	30.95	686.66
260 Workers' Compensation	1,562.40	4,179.17		5,741.57
<b>Total Personnel Services – Employee Benefits</b>	<b>\$429,990.84</b>	<b>\$896,011.04</b>	<b>\$1,020.91</b>	<b>\$1,327,022.79</b>
<b>300 Purchased Professional and Technical Services</b>				
329 Professional Educational Services – Other	72.50	317.43		389.93
<b>Total Purchased Professional and Technical Services</b>	<b>\$72.50</b>	<b>\$317.43</b>		<b>\$389.93</b>
<b>500 Other Purchased Services</b>				
510 Student Transportation Services	3,575.63	2,378.19		5,953.82
580 Travel		1,359.87	18.34	1,378.21
<b>Total Other Purchased Services</b>	<b>\$3,575.63</b>	<b>\$3,738.06</b>	<b>\$18.34</b>	<b>\$7,332.03</b>
<b>600 Supplies</b>				
610 General Supplies	4,065.29	(2,289.32)		1,775.97
640 Books and Periodicals			1,425.91	1,425.91
<b>Total Supplies</b>	<b>\$4,065.29</b>	<b>(\$2,289.32)</b>	<b>\$1,425.91</b>	<b>\$3,201.88</b>
<b>800 Other Objects</b>				
810 Dues and Fees		488.00		488.00
<b>Total Other Objects</b>		<b>\$488.00</b>		<b>\$488.00</b>
<b>Total 2120 Guidance Services</b>	<b>\$1,237,207.13</b>	<b>\$2,340,598.35</b>	<b>\$14,833.72</b>	<b>\$3,592,639.20</b>

**General Fund (10)**

	<u>Elementary</u>	<u>Secondary</u>	<u>Federal</u>	<u>Total</u>
<b>2140 Psychological Services</b>				
<b>100 Personnel Services – Salaries</b>				
100 Personnel Services – Salaries	460,553.91	235,567.77		696,121.68
<b>Total Personnel Services – Salaries</b>	<b>\$460,553.91</b>	<b>\$235,567.77</b>		<b>\$696,121.68</b>
<b>200 Personnel Services – Employee Benefits</b>				
210 Group Insurance – Contracted Provider	121,640.72	57,740.13		179,380.85
220 Social Security Contributions	44,208.89	16,591.81		60,800.70
230 PSERS Retirement Contributions	197,329.32	74,020.52		271,349.84
250 Unemployment Compensation	206.97	106.87		313.84
260 Workers' Compensation	890.97	442.83		1,333.80
280 Other Post-Employment Benefits (OPEB)	8,000.00	4,000.00		12,000.00
<b>Total Personnel Services – Employee Benefits</b>	<b>\$372,276.87</b>	<b>\$152,902.16</b>		<b>\$525,179.03</b>
<b>300 Purchased Professional and Technical Services</b>				
329 Professional Educational Services – Other	79,292.99	79,405.51		158,698.50
<b>Total Purchased Professional and Technical Services</b>	<b>\$79,292.99</b>	<b>\$79,405.51</b>		<b>\$158,698.50</b>
<b>500 Other Purchased Services</b>				
580 Travel	151.09			151.09
<b>Total Other Purchased Services</b>	<b>\$151.09</b>			<b>\$151.09</b>
<b>600 Supplies</b>				
610 General Supplies	11,777.75	11,770.02		23,547.77
640 Books and Periodicals	69.00	164.00		233.00
<b>Total Supplies</b>	<b>\$11,846.75</b>	<b>\$11,934.02</b>		<b>\$23,780.77</b>
<b>800 Other Objects</b>				
810 Dues and Fees	762.50	762.50		1,525.00
<b>Total Other Objects</b>	<b>\$762.50</b>	<b>\$762.50</b>		<b>\$1,525.00</b>
<b>Total 2140 Psychological Services</b>	<b>\$924,884.11</b>	<b>\$480,571.96</b>		<b>\$1,405,456.07</b>

General Fund (10)

	<u>Elementary</u>	<u>Secondary</u>	<u>Federal</u>	<u>Total</u>
<b>2150 Speech Pathology and Audiology Services</b>				
<b>300 <u>Purchased Professional and Technical Services</u></b>				
329 Professional Educational Services – Other	4,770.00			4,770.00
<b>Total Purchased Professional and Technical Services</b>	<b>\$4,770.00</b>			<b>\$4,770.00</b>
<b>Total 2150 Speech Pathology and Audiology Services</b>	<b>\$4,770.00</b>			<b>\$4,770.00</b>

General Fund (10)

2170 Student Accounting Services

Elementary

Secondary

Federal

Total

100 Personnel Services – Salaries

100 Personnel Services – Salaries

48,383.76

**Total Personnel Services – Salaries**

**\$48,383.76**

200 Personnel Services – Employee Benefits

210 Group Insurance – Contracted Provider

22,742.71

220 Social Security Contributions

3,458.16

230 PSERS Retirement Contributions

16,262.40

250 Unemployment Compensation

25.30

**Total Personnel Services – Employee Benefits**

**\$42,488.57**

**Total 2170 Student Accounting Services**

**\$90,872.33**

**General Fund (10)**

**2200 Support Services – Instructional Staff**

	<u>Elementary</u>	<u>Secondary</u>	<u>Federal</u>	<u>Total</u>
<b>100 Personnel Services – Salaries</b>				
100 Personnel Services – Salaries	1,008,405.12	707,089.54		1,715,494.66
<b>Total Personnel Services – Salaries</b>	<b>\$1,008,405.12</b>	<b>\$707,089.54</b>		<b>\$1,715,494.66</b>
<b>200 Personnel Services – Employee Benefits</b>				
210 Group Insurance – Contracted Provider	175,093.53	153,408.00		328,501.53
220 Social Security Contributions	73,865.01	50,956.83		124,821.84
230 PSERS Retirement Contributions	338,195.15	235,799.77		573,994.92
240 Tuition Reimbursement	126,993.20	93,014.83		220,008.03
250 Unemployment Compensation	239.03	180.25		419.28
260 Workers' Compensation	3,895.26	1,798.22		5,693.48
280 Other Post-Employment Benefits (OPEB)	5,750.00	13,250.00		19,000.00
<b>Total Personnel Services – Employee Benefits</b>	<b>\$724,031.18</b>	<b>\$548,407.90</b>		<b>\$1,272,439.08</b>
<b>300 Purchased Professional and Technical Services</b>				
329 Professional Educational Services – Other	24,935.95		219.70	25,155.65
360 Employee Training and Development Services	3,675.88	9,048.24	11,541.75	24,265.87
390 Other Purchased Professional and Technical Services		4,875.00		4,875.00
<b>Total Purchased Professional and Technical Services</b>	<b>\$28,611.83</b>	<b>\$13,923.24</b>	<b>\$11,761.45</b>	<b>\$54,296.52</b>
<b>500 Other Purchased Services</b>				
580 Travel	3,732.27	1,268.82		5,001.09
<b>Total Other Purchased Services</b>	<b>\$3,732.27</b>	<b>\$1,268.82</b>		<b>\$5,001.09</b>
<b>600 Supplies</b>				
610 General Supplies	7,300.80	3,515.34		10,816.14
640 Books and Periodicals	6,182.90	5,247.67	3,278.81	14,709.38
650 Supplies & Fees – Technology Related		3,681.75		3,681.75
<b>Total Supplies</b>	<b>\$13,483.70</b>	<b>\$12,444.76</b>	<b>\$3,278.81</b>	<b>\$29,207.27</b>
<b>800 Other Objects</b>				
810 Dues and Fees	4,037.00	3,614.00		7,651.00
<b>Total Other Objects</b>	<b>\$4,037.00</b>	<b>\$3,614.00</b>		<b>\$7,651.00</b>
<b>Total 2200 Support Services – Instructional Staff</b>	<b>\$1,782,301.10</b>	<b>\$1,286,748.26</b>	<b>\$15,040.26</b>	<b>\$3,084,089.62</b>

General Fund (10)

2220 Technology Support Services

600 Supplies

640 Books and Periodicals

650 Supplies & Fees – Technology Related

**Total Supplies**

**Total 2220 Technology Support Services**

Elementary

Secondary

Federal

Total

3,278.81

3,278.81

3,681.75

3,681.75

**\$3,681.75**

**\$3,278.81**

**\$6,960.56**

**\$3,681.75**

**\$3,278.81**

**\$6,960.56**

**General Fund (10)**

	<u>Elementary</u>	<u>Secondary</u>	<u>Federal</u>	<u>Total</u>
<b>2250 School Library Services</b>				
<b>100 Personnel Services – Salaries</b>				
100 Personnel Services – Salaries	615,627.78	297,747.51		913,375.29
<b>Total Personnel Services – Salaries</b>	<b>\$615,627.78</b>	<b>\$297,747.51</b>		<b>\$913,375.29</b>
<b>200 Personnel Services – Employee Benefits</b>				
210 Group Insurance – Contracted Provider	99,025.48	81,261.48		180,286.96
220 Social Security Contributions	46,756.65	22,777.63		69,534.28
230 PSERS Retirement Contributions	208,552.74	100,890.09		309,442.83
250 Unemployment Compensation	163.94	80.37		244.31
260 Workers' Compensation	2,619.81	538.15		3,157.96
<b>Total Personnel Services – Employee Benefits</b>	<b>\$357,118.62</b>	<b>\$205,547.72</b>		<b>\$562,666.34</b>
<b>300 Purchased Professional and Technical Services</b>				
390 Other Purchased Professional and Technical Services		2,500.00		2,500.00
<b>Total Purchased Professional and Technical Services</b>		<b>\$2,500.00</b>		<b>\$2,500.00</b>
<b>600 Supplies</b>				
610 General Supplies	5,484.80	1,008.69		6,493.49
640 Books and Periodicals	6,182.90	5,247.67		11,430.57
<b>Total Supplies</b>	<b>\$11,667.70</b>	<b>\$6,256.36</b>		<b>\$17,924.06</b>
<b>Total 2250 School Library Services</b>	<b>\$984,414.10</b>	<b>\$512,051.59</b>		<b>\$1,496,465.69</b>

**General Fund (10)**

**2260 Instruction and Curriculum Development Services**

	<u>Elementary</u>	<u>Secondary</u>	<u>Federal</u>	<u>Total</u>
<b>100 Personnel Services – Salaries</b>				
100 Personnel Services – Salaries	364,838.30	397,572.03		762,410.33
<b>Total Personnel Services – Salaries</b>	<b>\$364,838.30</b>	<b>\$397,572.03</b>		<b>\$762,410.33</b>
<b>200 Personnel Services – Employee Benefits</b>				
210 Group Insurance – Contracted Provider	76,068.05	72,146.52		148,214.57
220 Social Security Contributions	24,971.11	27,278.81		52,249.92
230 PSERS Retirement Contributions	120,143.05	130,907.87		251,050.92
250 Unemployment Compensation	75.09	99.88		174.97
260 Workers' Compensation	1,253.29	1,252.71		2,506.00
280 Other Post-Employment Benefits (OPEB)	5,750.00	13,250.00		19,000.00
<b>Total Personnel Services – Employee Benefits</b>	<b>\$228,260.59</b>	<b>\$244,935.79</b>		<b>\$473,196.38</b>
<b>300 Purchased Professional and Technical Services</b>				
329 Professional Educational Services – Other	24,935.95			24,935.95
<b>Total Purchased Professional and Technical Services</b>	<b>\$24,935.95</b>			<b>\$24,935.95</b>
<b>500 Other Purchased Services</b>				
580 Travel	3,732.27	1,268.82		5,001.09
<b>Total Other Purchased Services</b>	<b>\$3,732.27</b>	<b>\$1,268.82</b>		<b>\$5,001.09</b>
<b>600 Supplies</b>				
610 General Supplies	1,816.00	2,411.65		4,227.65
<b>Total Supplies</b>	<b>\$1,816.00</b>	<b>\$2,411.65</b>		<b>\$4,227.65</b>
<b>800 Other Objects</b>				
810 Dues and Fees	4,037.00	2,000.00		6,037.00
<b>Total Other Objects</b>	<b>\$4,037.00</b>	<b>\$2,000.00</b>		<b>\$6,037.00</b>
<b>Total 2260 Instruction and Curriculum Development Services</b>	<b>\$627,620.11</b>	<b>\$648,188.29</b>		<b>\$1,275,808.40</b>

**General Fund (10)**

	<u>Elementary</u>	<u>Secondary</u>	<u>Federal</u>	<u>Total</u>
<b>2270 Instructional Staff Professional Development Services</b>				
<b>200 Personnel Services – Employee Benefits</b>				
240 Tuition Reimbursement	126,993.20	93,014.83		220,008.03
<b>Total Personnel Services – Employee Benefits</b>	<b>\$126,993.20</b>	<b>\$93,014.83</b>		<b>\$220,008.03</b>
<b>300 Purchased Professional and Technical Services</b>				
329 Professional Educational Services – Other			219.70	219.70
360 Employee Training and Development Services	3,675.88	9,048.24	11,541.75	24,265.87
390 Other Purchased Professional and Technical Services		2,375.00		2,375.00
<b>Total Purchased Professional and Technical Services</b>	<b>\$3,675.88</b>	<b>\$11,423.24</b>	<b>\$11,761.45</b>	<b>\$26,860.57</b>
<b>600 Supplies</b>				
610 General Supplies		95.00		95.00
<b>Total Supplies</b>		<b>\$95.00</b>		<b>\$95.00</b>
<b>800 Other Objects</b>				
810 Dues and Fees		1,614.00		1,614.00
<b>Total Other Objects</b>		<b>\$1,614.00</b>		<b>\$1,614.00</b>
<b>Total 2270 Instructional Staff Professional Development Services</b>	<b>\$130,669.08</b>	<b>\$106,147.07</b>	<b>\$11,761.45</b>	<b>\$248,577.60</b>

**General Fund (10)**

**2280 Nonpublic Support Services**

**100 Personnel Services – Salaries**

	<u>Elementary</u>	<u>Secondary</u>	<u>Federal</u>	<u>Total</u>
100 Personnel Services – Salaries	27,939.04	11,770.00		39,709.04
<b>Total Personnel Services – Salaries</b>	<b>\$27,939.04</b>	<b>\$11,770.00</b>		<b>\$39,709.04</b>

**200 Personnel Services – Employee Benefits**

220 Social Security Contributions	2,137.25	900.39		3,037.64
230 PSERS Retirement Contributions	9,499.36	4,001.81		13,501.17
260 Workers' Compensation	22.16	7.36		29.52
<b>Total Personnel Services – Employee Benefits</b>	<b>\$11,658.77</b>	<b>\$4,909.56</b>		<b>\$16,568.33</b>
<b>Total 2280 Nonpublic Support Services</b>	<b>\$39,597.81</b>	<b>\$16,679.56</b>		<b>\$56,277.37</b>

**General Fund (10)**

	<u>Elementary</u>	<u>Secondary</u>	<u>Federal</u>	<u>Total</u>
<b>2300 Support Services – Administration</b>				
<b>100 Personnel Services – Salaries</b>				
100 Personnel Services – Salaries	1,919,249.63	1,927,191.69		4,496,813.43
<b>Total Personnel Services – Salaries</b>	<b>\$1,919,249.63</b>	<b>\$1,927,191.69</b>		<b>\$4,496,813.43</b>
<b>200 Personnel Services – Employee Benefits</b>				
210 Group Insurance – Contracted Provider	431,871.04	417,222.76		942,977.89
220 Social Security Contributions	140,473.13	142,535.86		325,506.93
230 PSERS Retirement Contributions	644,238.89	645,779.02		1,466,888.17
250 Unemployment Compensation	697.71	633.85		1,456.56
260 Workers' Compensation	2,660.97	4,190.97		8,648.75
280 Other Post-Employment Benefits (OPEB)	12,000.00	7,875.00		29,125.00
<b>Total Personnel Services – Employee Benefits</b>	<b>\$1,231,941.74</b>	<b>\$1,218,237.46</b>		<b>\$2,774,603.30</b>
<b>300 Purchased Professional and Technical Services</b>				
310 Official / Administrative Services				61,318.31
329 Professional Educational Services – Other				113,961.04
330 Other Professional Services				334,562.07
390 Other Purchased Professional and Technical Services				20,211.62
<b>Total Purchased Professional and Technical Services</b>				<b>\$530,053.04</b>
<b>400 Purchased Property Services</b>				
430 Repairs and Maintenance Services	131.25			3,080.93
440 Rentals				5,401.84
<b>Total Purchased Property Services</b>	<b>\$131.25</b>			<b>\$8,482.77</b>
<b>500 Other Purchased Services</b>				
520 Insurance – General				103,499.75
530 Communications	24,634.64	17,249.86		65,457.68
549 Other Advertising/Public Relations				5,567.80
550 Printing and Binding				27,869.53
580 Travel	3,260.66	2,610.43		9,719.39
<b>Total Other Purchased Services</b>	<b>\$27,895.30</b>	<b>\$19,860.29</b>		<b>\$212,114.15</b>
<b>600 Supplies</b>				
610 General Supplies	21,009.64	7,354.94		79,863.38
640 Books and Periodicals	38.09	864.19		2,329.62
<b>Total Supplies</b>	<b>\$21,047.73</b>	<b>\$8,219.13</b>		<b>\$82,193.00</b>
<b>800 Other Objects</b>				
810 Dues and Fees	8,999.50	8,663.50		49,570.30
820 Claims and Judgments Against the LEA				46,725.00
890 Miscellaneous Expenditures				7,443.64
<b>Total Other Objects</b>	<b>\$8,999.50</b>	<b>\$8,663.50</b>		<b>\$103,738.94</b>
<b>Total 2300 Support Services – Administration</b>	<b>\$3,209,265.15</b>	<b>\$3,182,172.07</b>		<b>\$8,207,998.63</b>

LEA : 104107903 Seneca Valley SD

Printed 11/18/2024 3:09:24 PM

**General Fund (10)**

**2310 Board Services**

Elementary                      Secondary                      Federal                      Total

<b>300</b>	<b><u>Purchased Professional and Technical Services</u></b>			
	330 Other Professional Services			18,037.10
<b>Total Purchased Professional and Technical Services</b>				<b>\$18,037.10</b>
<b>400</b>	<b><u>Purchased Property Services</u></b>			
	430 Repairs and Maintenance Services			2,949.68
	440 Rentals			5,401.84
<b>Total Purchased Property Services</b>				<b>\$8,351.52</b>
<b>500</b>	<b><u>Other Purchased Services</u></b>			
	520 Insurance – General			103,499.75
	549 Other Advertising/Public Relations			5,567.80
	580 Travel			283.42
<b>Total Other Purchased Services</b>				<b>\$109,350.97</b>
<b>600</b>	<b><u>Supplies</u></b>			
	610 General Supplies			5,612.59
	640 Books and Periodicals			227.83
<b>Total Supplies</b>				<b>\$5,840.42</b>
<b>800</b>	<b><u>Other Objects</u></b>			
	810 Dues and Fees			16,906.16
	820 Claims and Judgments Against the LEA			46,725.00
<b>Total Other Objects</b>				<b>\$63,631.16</b>
<b>Total 2310 Board Services</b>				<b>\$205,211.17</b>

**General Fund (10)**

	<u>Elementary</u>	<u>Secondary</u>	<u>Federal</u>	<u>Total</u>
<b>2330 Tax Assessment and Collection Services</b>				
<b>100 Personnel Services – Salaries</b>				
100 Personnel Services – Salaries				95,956.00
<b>Total Personnel Services – Salaries</b>				<b>\$95,956.00</b>
<b>200 Personnel Services – Employee Benefits</b>				
220 Social Security Contributions				7,340.70
<b>Total Personnel Services – Employee Benefits</b>				<b>\$7,340.70</b>
<b>300 Purchased Professional and Technical Services</b>				
310 Official / Administrative Services				61,318.31
330 Other Professional Services				218,820.30
390 Other Purchased Professional and Technical Services				20,211.62
<b>Total Purchased Professional and Technical Services</b>				<b>\$300,350.23</b>
<b>500 Other Purchased Services</b>				
530 Communications				22,602.64
<b>Total Other Purchased Services</b>				<b>\$22,602.64</b>
<b>800 Other Objects</b>				
890 Miscellaneous Expenditures				7,443.64
<b>Total Other Objects</b>				<b>\$7,443.64</b>
<b>Total 2330 Tax Assessment and Collection Services</b>				<b>\$433,693.21</b>

General Fund (10)

2350 Legal and Accounting Services

Elementary

Secondary

Federal

Total

300 Purchased Professional and Technical Services

330 Other Professional Services

97,704.67

**Total Purchased Professional and Technical Services**

**\$97,704.67**

**Total 2350 Legal and Accounting Services**

**\$97,704.67**

**General Fund (10)**

**2360 Office of the Superintendent / Executive Director Services**

	<u>Elementary</u>	<u>Secondary</u>	<u>Federal</u>	<u>Total</u>
<b>100 Personnel Services – Salaries</b>				
100 Personnel Services – Salaries				321,780.85
<b>Total Personnel Services – Salaries</b>				<b>\$321,780.85</b>
<b>200 Personnel Services – Employee Benefits</b>				
210 Group Insurance – Contracted Provider				47,229.12
220 Social Security Contributions				18,114.73
230 PSERS Retirement Contributions				100,234.40
250 Unemployment Compensation				49.99
260 Workers' Compensation				1,230.53
280 Other Post-Employment Benefits (OPEB)				6,750.00
<b>Total Personnel Services – Employee Benefits</b>				<b>\$173,608.77</b>
<b>500 Other Purchased Services</b>				
530 Communications	13,319.39	13,369.39		26,688.78
550 Printing and Binding				42.00
580 Travel				2,387.94
<b>Total Other Purchased Services</b>	<b>\$13,319.39</b>	<b>\$13,369.39</b>		<b>\$29,118.72</b>
<b>600 Supplies</b>				
610 General Supplies				13,832.50
640 Books and Periodicals				1,199.51
<b>Total Supplies</b>				<b>\$15,032.01</b>
<b>800 Other Objects</b>				
810 Dues and Fees				9,038.00
<b>Total Other Objects</b>				<b>\$9,038.00</b>
<b>Total 2360 Office of the Superintendent / Executive Director Services</b>	<b>\$13,319.39</b>	<b>\$13,369.39</b>		<b>\$548,578.35</b>

**General Fund (10)**

**2370 Community Relations Services**

Elementary                      Secondary                      Federal                      Total

**100 Personnel Services – Salaries**

100 Personnel Services – Salaries 232,635.26

**Total Personnel Services – Salaries \$232,635.26**

**200 Personnel Services – Employee Benefits**

210 Group Insurance – Contracted Provider 46,654.97

220 Social Security Contributions 17,042.51

230 PSERS Retirement Contributions 76,635.86

250 Unemployment Compensation 75.01

260 Workers' Compensation 566.28

280 Other Post-Employment Benefits (OPEB) 2,500.00

**Total Personnel Services – Employee Benefits \$143,474.63**

**300 Purchased Professional and Technical Services**

329 Professional Educational Services – Other 113,961.04

**Total Purchased Professional and Technical Services \$113,961.04**

**500 Other Purchased Services**

530 Communications 970.54

550 Printing and Binding 27,827.53

580 Travel 1,176.94

**Total Other Purchased Services \$29,975.01**

**600 Supplies**

610 General Supplies 32,053.71

**Total Supplies \$32,053.71**

**800 Other Objects**

810 Dues and Fees 5,963.14

**Total Other Objects \$5,963.14**

**Total 2370 Community Relations Services \$558,062.79**

**General Fund (10)**

	<u>Elementary</u>	<u>Secondary</u>	<u>Federal</u>	<u>Total</u>
<b>2380 Office of the Principal Services</b>				
<b>100 Personnel Services – Salaries</b>				
100 Personnel Services – Salaries	1,919,249.63	1,927,191.69		3,846,441.32
<b>Total Personnel Services – Salaries</b>	<b>\$1,919,249.63</b>	<b>\$1,927,191.69</b>		<b>\$3,846,441.32</b>
<b>200 Personnel Services – Employee Benefits</b>				
210 Group Insurance – Contracted Provider	431,871.04	417,222.76		849,093.80
220 Social Security Contributions	140,473.13	142,535.86		283,008.99
230 PSERS Retirement Contributions	644,238.89	645,779.02		1,290,017.91
250 Unemployment Compensation	697.71	633.85		1,331.56
260 Workers' Compensation	2,660.97	4,190.97		6,851.94
280 Other Post-Employment Benefits (OPEB)	12,000.00	7,875.00		19,875.00
<b>Total Personnel Services – Employee Benefits</b>	<b>\$1,231,941.74</b>	<b>\$1,218,237.46</b>		<b>\$2,450,179.20</b>
<b>400 Purchased Property Services</b>				
430 Repairs and Maintenance Services	131.25			131.25
<b>Total Purchased Property Services</b>	<b>\$131.25</b>			<b>\$131.25</b>
<b>500 Other Purchased Services</b>				
530 Communications	11,315.25	3,880.47		15,195.72
580 Travel	3,260.66	2,610.43		5,871.09
<b>Total Other Purchased Services</b>	<b>\$14,575.91</b>	<b>\$6,490.90</b>		<b>\$21,066.81</b>
<b>600 Supplies</b>				
610 General Supplies	21,009.64	7,354.94		28,364.58
640 Books and Periodicals	38.09	864.19		902.28
<b>Total Supplies</b>	<b>\$21,047.73</b>	<b>\$8,219.13</b>		<b>\$29,266.86</b>
<b>800 Other Objects</b>				
810 Dues and Fees	8,999.50	8,663.50		17,663.00
<b>Total Other Objects</b>	<b>\$8,999.50</b>	<b>\$8,663.50</b>		<b>\$17,663.00</b>
<b>Total 2380 Office of the Principal Services</b>	<b>\$3,195,945.76</b>	<b>\$3,168,802.68</b>		<b>\$6,364,748.44</b>

**General Fund (10)**

	<u>Elementary</u>	<u>Secondary</u>	<u>Federal</u>	<u>Total</u>
<b>2400 Support Services – Pupil Health</b>				
<b>100 Personnel Services – Salaries</b>				
100 Personnel Services – Salaries			119.97	878,730.01
<b>Total Personnel Services – Salaries</b>			<b>\$119.97</b>	<b>\$878,730.01</b>
<b>200 Personnel Services – Employee Benefits</b>				
210 Group Insurance – Contracted Provider				230,334.04
220 Social Security Contributions			9.17	66,813.98
230 PSERS Retirement Contributions			40.79	285,215.09
250 Unemployment Compensation				407.17
260 Workers' Compensation				1,521.45
<b>Total Personnel Services – Employee Benefits</b>			<b>\$49.96</b>	<b>\$584,291.73</b>
<b>300 Purchased Professional and Technical Services</b>				
330 Other Professional Services				1,640.00
<b>Total Purchased Professional and Technical Services</b>				<b>\$1,640.00</b>
<b>400 Purchased Property Services</b>				
430 Repairs and Maintenance Services				907.20
<b>Total Purchased Property Services</b>				<b>\$907.20</b>
<b>600 Supplies</b>				
610 General Supplies				26,607.22
<b>Total Supplies</b>				<b>\$26,607.22</b>
<b>Total 2400 Support Services – Pupil Health</b>			<b>\$169.93</b>	<b>\$1,492,176.16</b>

General Fund (10)

2420 Medical Services

Elementary

Secondary

Federal

Total

300 Purchased Professional and Technical Services

330 Other Professional Services

780.00

**Total Purchased Professional and Technical Services**

**\$780.00**

400 Purchased Property Services

430 Repairs and Maintenance Services

907.20

**Total Purchased Property Services**

**\$907.20**

600 Supplies

610 General Supplies

26,607.22

**Total Supplies**

**\$26,607.22**

**Total 2420 Medical Services**

**\$28,294.42**

General Fund (10)

2430 Dental Services

Elementary

Secondary

Federal

Total

300 Purchased Professional and Technical Services

330 Other Professional Services

860.00

**Total Purchased Professional and Technical Services**

**\$860.00**

**Total 2430 Dental Services**

**\$860.00**

**General Fund (10)**

**2440 Nursing Services**

**100 Personnel Services – Salaries**

100 Personnel Services – Salaries

**Total Personnel Services – Salaries**

**200 Personnel Services – Employee Benefits**

210 Group Insurance – Contracted Provider

220 Social Security Contributions

230 PSERS Retirement Contributions

250 Unemployment Compensation

260 Workers' Compensation

**Total Personnel Services – Employee Benefits**

**Total 2440 Nursing Services**

	<u>Elementary</u>	<u>Secondary</u>	<u>Federal</u>	<u>Total</u>
			119.97	878,730.01
<b>Total Personnel Services – Salaries</b>			<b>\$119.97</b>	<b>\$878,730.01</b>
				230,334.04
			9.17	66,813.98
			40.79	285,215.09
				407.17
				1,521.45
<b>Total Personnel Services – Employee Benefits</b>			<b>\$49.96</b>	<b>\$584,291.73</b>
<b>Total 2440 Nursing Services</b>			<b>\$169.93</b>	<b>\$1,463,021.74</b>

**General Fund (10)**

**2500 Support Services – Business**

Elementary                      Secondary                      Federal                      Total

**100 Personnel Services – Salaries**

100 Personnel Services – Salaries 477,368.73

**Total Personnel Services – Salaries \$477,368.73**

**200 Personnel Services – Employee Benefits**

210 Group Insurance – Contracted Provider 91,966.66

220 Social Security Contributions 35,807.53

230 PSERS Retirement Contributions 160,517.23

250 Unemployment Compensation 201.74

260 Workers' Compensation 1,189.37

280 Other Post-Employment Benefits (OPEB) 23,850.00

**Total Personnel Services – Employee Benefits \$313,532.53**

**500 Other Purchased Services**

550 Printing and Binding 348.50

580 Travel 1,300.03

**Total Other Purchased Services \$1,648.53**

**600 Supplies**

610 General Supplies 4,691.87

**Total Supplies \$4,691.87**

**800 Other Objects**

810 Dues and Fees 6,304.96

**Total Other Objects \$6,304.96**

**Total 2500 Support Services – Business \$803,546.62**

General Fund (10)

2510 Fiscal Services

Elementary

Secondary

Federal

Total

100 Personnel Services – Salaries

100 Personnel Services – Salaries

477,368.73

**Total Personnel Services – Salaries**

**\$477,368.73**

200 Personnel Services – Employee Benefits

210 Group Insurance – Contracted Provider

91,966.66

220 Social Security Contributions

35,807.53

230 PSERS Retirement Contributions

160,517.23

250 Unemployment Compensation

201.74

260 Workers' Compensation

1,189.37

280 Other Post-Employment Benefits (OPEB)

23,850.00

**Total Personnel Services – Employee Benefits**

**\$313,532.53**

500 Other Purchased Services

550 Printing and Binding

348.50

580 Travel

1,300.03

**Total Other Purchased Services**

**\$1,648.53**

600 Supplies

610 General Supplies

4,691.87

**Total Supplies**

**\$4,691.87**

800 Other Objects

810 Dues and Fees

6,304.96

**Total Other Objects**

**\$6,304.96**

**Total 2510 Fiscal Services**

**\$803,546.62**

**General Fund (10)**

	<u>Elementary</u>	<u>Secondary</u>	<u>Federal</u>	<u>Total</u>
<b>2511 Supervision of Fiscal Services - Head of Component</b>				
<b>100 <u>Personnel Services – Salaries</u></b>				
100 Personnel Services – Salaries				213,698.90
<b>Total Personnel Services – Salaries</b>				<b>\$213,698.90</b>
<b>200 <u>Personnel Services – Employee Benefits</u></b>				
210 Group Insurance – Contracted Provider				41,987.99
220 Social Security Contributions				16,213.78
230 PSERS Retirement Contributions				73,605.53
250 Unemployment Compensation				62.53
260 Workers' Compensation				115.18
280 Other Post-Employment Benefits (OPEB)				23,850.00
<b>Total Personnel Services – Employee Benefits</b>				<b>\$155,835.01</b>
<b>500 <u>Other Purchased Services</u></b>				
550 Printing and Binding				348.50
580 Travel				1,192.69
<b>Total Other Purchased Services</b>				<b>\$1,541.19</b>
<b>600 <u>Supplies</u></b>				
610 General Supplies				1,378.41
<b>Total Supplies</b>				<b>\$1,378.41</b>
<b>800 <u>Other Objects</u></b>				
810 Dues and Fees				1,283.00
<b>Total Other Objects</b>				<b>\$1,283.00</b>
<b>Total 2511 Supervision of Fiscal Services - Head of Component</b>				<b>\$373,736.51</b>



General Fund (10)

2514 Payroll Services

Elementary

Secondary

Federal

Total

100 Personnel Services – Salaries

100 Personnel Services – Salaries

76,531.85

**Total Personnel Services – Salaries**

**\$76,531.85**

200 Personnel Services – Employee Benefits

210 Group Insurance – Contracted Provider

1,054.44

220 Social Security Contributions

5,829.26

230 PSERS Retirement Contributions

24,393.72

250 Unemployment Compensation

25.00

260 Workers' Compensation

381.07

**Total Personnel Services – Employee Benefits**

**\$31,683.49**

500 Other Purchased Services

580 Travel

107.34

**Total Other Purchased Services**

**\$107.34**

600 Supplies

610 General Supplies

2,038.70

**Total Supplies**

**\$2,038.70**

**Total 2514 Payroll Services**

**\$110,361.38**

**General Fund (10)**

**2515 Financial Accounting Services**

**100 Personnel Services – Salaries**

100 Personnel Services – Salaries

Elementary

Secondary

Federal

Total

97,317.85

**Total Personnel Services – Salaries**

**\$97,317.85**

**200 Personnel Services – Employee Benefits**

210 Group Insurance – Contracted Provider

1,054.44

220 Social Security Contributions

7,411.88

230 PSERS Retirement Contributions

31,428.28

250 Unemployment Compensation

25.00

260 Workers' Compensation

484.55

**Total Personnel Services – Employee Benefits**

**\$40,404.15**

**600 Supplies**

610 General Supplies

52.08

**Total Supplies**

**\$52.08**

**800 Other Objects**

810 Dues and Fees

241.96

**Total Other Objects**

**\$241.96**

**Total 2515 Financial Accounting Services**

**\$138,016.04**

**General Fund (10)**

**2519 Other Fiscal Services**

Elementary                      Secondary                      Federal                      Total

<b>100</b>	<b><u>Personnel Services – Salaries</u></b>			
	100 Personnel Services – Salaries			47,949.73
<b>Total Personnel Services – Salaries</b>				<b>\$47,949.73</b>
<b>200</b>	<b><u>Personnel Services – Employee Benefits</u></b>			
	210 Group Insurance – Contracted Provider			27,366.23
	220 Social Security Contributions			3,487.18
	230 PSERS Retirement Contributions			16,900.49
	250 Unemployment Compensation			64.22
<b>Total Personnel Services – Employee Benefits</b>				<b>\$47,818.12</b>
<b>600</b>	<b><u>Supplies</u></b>			
	610 General Supplies			242.92
<b>Total Supplies</b>				<b>\$242.92</b>
<b>800</b>	<b><u>Other Objects</u></b>			
	810 Dues and Fees			4,780.00
<b>Total Other Objects</b>				<b>\$4,780.00</b>
<b>Total 2519 Other Fiscal Services</b>				<b>\$100,790.77</b>



**General Fund (10)**

**2610 Supervision of Operation and Maintenance of Plant Services**

Elementary                      Secondary                      Federal                      Total

<b>100</b>	<b><u>Personnel Services – Salaries</u></b>			
	100 Personnel Services – Salaries			328,178.92
<b>Total Personnel Services – Salaries</b>				<b>\$328,178.92</b>
<b>200</b>	<b><u>Personnel Services – Employee Benefits</u></b>			
	210 Group Insurance – Contracted Provider			53,434.00
	220 Social Security Contributions			24,547.79
	230 PSERS Retirement Contributions			109,902.33
	250 Unemployment Compensation			101.26
	260 Workers' Compensation			115.18
<b>Total Personnel Services – Employee Benefits</b>				<b>\$188,100.56</b>
<b>800</b>	<b><u>Other Objects</u></b>			
	810 Dues and Fees			114.00
<b>Total Other Objects</b>				<b>\$114.00</b>
<b>Total 2610 Supervision of Operation and Maintenance of Plant Services</b>				<b>\$516,393.48</b>

General Fund (10)

2611 Supervision of Operation and Maintenance of Plant Services – Head of Component

Elementary

Secondary

Federal

Total

100 Personnel Services – Salaries

100 Personnel Services – Salaries

182,461.52

**Total Personnel Services – Salaries**

**\$182,461.52**

200 Personnel Services – Employee Benefits

210 Group Insurance – Contracted Provider

25,892.35

220 Social Security Contributions

13,448.25

230 PSERS Retirement Contributions

60,358.46

250 Unemployment Compensation

37.48

260 Workers' Compensation

115.18

**Total Personnel Services – Employee Benefits**

**\$99,851.72**

800 Other Objects

810 Dues and Fees

114.00

**Total Other Objects**

**\$114.00**

**Total 2611 Supervision of Operation and Maintenance of Plant Services – Head of Component**

**\$282,427.24**

General Fund (10)

2619 Supervision of Operation and Maintenance of Plant Services – All Other Supervision

Elementary

Secondary

Federal

Total

100 Personnel Services – Salaries

100 Personnel Services – Salaries

145,717.40

**Total Personnel Services – Salaries**

**\$145,717.40**

200 Personnel Services – Employee Benefits

210 Group Insurance – Contracted Provider

27,541.65

220 Social Security Contributions

11,099.54

230 PSERS Retirement Contributions

49,543.87

250 Unemployment Compensation

63.78

**Total Personnel Services – Employee Benefits**

**\$88,248.84**

**Total 2619 Supervision of Operation and Maintenance of Plant Services – All Other Supervision**

**\$233,966.24**

LEA : 104107903 Seneca Valley SD

Printed 11/18/2024 3:09:24 PM

**General Fund (10)**

	<u>Elementary</u>	<u>Secondary</u>	<u>Federal</u>	<u>Total</u>
<b>2620 Operation of Buildings Services</b>				
<b>100 Personnel Services – Salaries</b>				
100 Personnel Services – Salaries				2,035,159.18
<b>Total Personnel Services – Salaries</b>				<b>\$2,035,159.18</b>
<b>200 Personnel Services – Employee Benefits</b>				
210 Group Insurance – Contracted Provider				405,195.58
220 Social Security Contributions				151,918.24
230 PSERS Retirement Contributions				685,642.98
250 Unemployment Compensation				908.76
260 Workers' Compensation				8,814.65
280 Other Post-Employment Benefits (OPEB)				4,120.00
<b>Total Personnel Services – Employee Benefits</b>				<b>\$1,256,600.21</b>
<b>300 Purchased Professional and Technical Services</b>				
329 Professional Educational Services – Other				5,598.46
<b>Total Purchased Professional and Technical Services</b>				<b>\$5,598.46</b>
<b>400 Purchased Property Services</b>				
410 Cleaning Services				2,198,658.40
420 Utility Services				270,014.08
430 Repairs and Maintenance Services				732,969.68
490 Other Purchased Property Services				19,277.35
<b>Total Purchased Property Services</b>				<b>\$3,220,919.51</b>
<b>500 Other Purchased Services</b>				
521 Fire Insurance				282,683.00
522 Automotive Liability Insurance				9,516.00
523 General Property and Liability Insurance				10,244.00
530 Communications				165,003.28
580 Travel				6,494.85
<b>Total Other Purchased Services</b>				<b>\$473,941.13</b>
<b>600 Supplies</b>				
610 General Supplies	301,677.68	318,147.10	2,053.86	621,878.64
620 Energy				1,348,779.12
<b>Total Supplies</b>	<b>\$301,677.68</b>	<b>\$318,147.10</b>	<b>\$2,053.86</b>	<b>\$1,970,657.76</b>
<b>700 Property</b>				
752 Capital Equipment – Original and Additional				16,823.00
762 Capitalized Equipment - Replacement				56,588.45
<b>Total Property</b>				<b>\$73,411.45</b>
<b>Total 2620 Operation of Buildings Services</b>	<b>\$301,677.68</b>	<b>\$318,147.10</b>	<b>\$2,053.86</b>	<b>\$9,036,287.70</b>

**General Fund (10)**

	<u>Elementary</u>	<u>Secondary</u>	<u>Federal</u>	<u>Total</u>
<b>2650 Vehicle Operation and Maintenance Services (Other Than Student Transportation Vehicles)</b>				
<b>400 <u>Purchased Property Services</u></b>				
430 Repairs and Maintenance Services				41.00
<b>Total Purchased Property Services</b>				<b>\$41.00</b>
<b>600 <u>Supplies</u></b>				
620 Energy				17,921.22
<b>Total Supplies</b>				<b>\$17,921.22</b>
<b>Total 2650 Vehicle Operation and Maintenance Services (Other Than Student Transportation Vehicles)</b>				<b>\$17,962.22</b>

**General Fund (10)**

	<u>Elementary</u>	<u>Secondary</u>	<u>Federal</u>	<u>Total</u>
<b>2660 Safety and Security Services</b>				
<b>100 Personnel Services – Salaries</b>				
100 Personnel Services – Salaries				96,564.20
<b>Total Personnel Services – Salaries</b>				<b>\$96,564.20</b>
<b>200 Personnel Services – Employee Benefits</b>				
210 Group Insurance – Contracted Provider				29,816.42
220 Social Security Contributions				6,925.34
230 PSERS Retirement Contributions				32,117.81
250 Unemployment Compensation				53.07
<b>Total Personnel Services – Employee Benefits</b>				<b>\$68,912.64</b>
<b>300 Purchased Professional and Technical Services</b>				
329 Professional Educational Services – Other				1,320,593.81
<b>Total Purchased Professional and Technical Services</b>				<b>\$1,320,593.81</b>
<b>500 Other Purchased Services</b>				
580 Travel				1,138.51
<b>Total Other Purchased Services</b>				<b>\$1,138.51</b>
<b>600 Supplies</b>				
610 General Supplies		32,679.85	(930.88)	31,748.97
<b>Total Supplies</b>		<b>\$32,679.85</b>	<b>(\$930.88)</b>	<b>\$31,748.97</b>
<b>700 Property</b>				
752 Capital Equipment – Original and Additional				33,416.72
<b>Total Property</b>				<b>\$33,416.72</b>
<b>Total 2660 Safety and Security Services</b>		<b>\$32,679.85</b>	<b>(\$930.88)</b>	<b>\$1,552,374.85</b>

**General Fund (10)**

**2700 Student Transportation Services**

Elementary                      Secondary                      Federal                      Total

<b>100</b>	<b><u>Personnel Services – Salaries</u></b>			
	100 Personnel Services – Salaries			174,062.54
<b>Total Personnel Services – Salaries</b>				<b>\$174,062.54</b>
<b>200</b>	<b><u>Personnel Services – Employee Benefits</u></b>			
	210 Group Insurance – Contracted Provider			68,722.69
	220 Social Security Contributions			13,357.45
	230 PSERS Retirement Contributions			61,337.32
	250 Unemployment Compensation			74.98
	260 Workers' Compensation			463.06
<b>Total Personnel Services – Employee Benefits</b>				<b>\$143,955.50</b>
<b>300</b>	<b><u>Purchased Professional and Technical Services</u></b>			
	329 Professional Educational Services – Other			21,519.97
<b>Total Purchased Professional and Technical Services</b>				<b>\$21,519.97</b>
<b>500</b>	<b><u>Other Purchased Services</u></b>			
	513 Contracted Carriers		14,456.56	8,102,289.40
	516 Student Transportation Services From the IU			3,012.26
	530 Communications			564.45
	580 Travel			1,088.35
<b>Total Other Purchased Services</b>			<b>\$14,456.56</b>	<b>\$8,106,954.46</b>
<b>600</b>	<b><u>Supplies</u></b>			
	610 General Supplies			1,482.38
<b>Total Supplies</b>				<b>\$1,482.38</b>
<b>800</b>	<b><u>Other Objects</u></b>			
	810 Dues and Fees			228.00
<b>Total Other Objects</b>				<b>\$228.00</b>
<b>Total 2700 Student Transportation Services</b>			<b>\$14,456.56</b>	<b>\$8,448,202.85</b>

**General Fund (10)**

**2710 Supervision of Student Transportation Services**

Elementary

Secondary

Federal

Total

**100 Personnel Services – Salaries**

100 Personnel Services – Salaries

174,062.54

**Total Personnel Services – Salaries**

**\$174,062.54**

**200 Personnel Services – Employee Benefits**

210 Group Insurance – Contracted Provider

68,722.69

220 Social Security Contributions

13,357.45

230 PSERS Retirement Contributions

61,337.32

250 Unemployment Compensation

74.98

260 Workers' Compensation

463.06

**Total Personnel Services – Employee Benefits**

**\$143,955.50**

**300 Purchased Professional and Technical Services**

329 Professional Educational Services – Other

21,519.97

**Total Purchased Professional and Technical Services**

**\$21,519.97**

**800 Other Objects**

810 Dues and Fees

228.00

**Total Other Objects**

**\$228.00**

**Total 2710 Supervision of Student Transportation Services**

**\$339,766.01**



General Fund (10)

2719 Supervision of Student Transportation Services – All Other Supervision

Elementary

Secondary

Federal

Total

100 Personnel Services – Salaries

100 Personnel Services – Salaries

93,193.54

**Total Personnel Services – Salaries**

**\$93,193.54**

200 Personnel Services – Employee Benefits

210 Group Insurance – Contracted Provider

28,794.56

220 Social Security Contributions

6,721.30

230 PSERS Retirement Contributions

31,486.25

250 Unemployment Compensation

49.98

260 Workers' Compensation

463.06

**Total Personnel Services – Employee Benefits**

**\$67,515.15**

**Total 2719 Supervision of Student Transportation Services – All Other Supervision**

**\$160,708.69**

**General Fund (10)**

**2720 Vehicle Operation Services**

**500 Other Purchased Services**

	<u>Elementary</u>	<u>Secondary</u>	<u>Federal</u>	<u>Total</u>
513 Contracted Carriers			14,456.56	7,172,595.14
516 Student Transportation Services From the IU				3,012.26
530 Communications				564.45
580 Travel				1,088.35

<b>Total Other Purchased Services</b>			<b>\$14,456.56</b>	<b>\$7,177,260.20</b>
---------------------------------------	--	--	--------------------	-----------------------

**600 Supplies**

610 General Supplies				1,482.38
----------------------	--	--	--	----------

<b>Total Supplies</b>				<b>\$1,482.38</b>
-----------------------	--	--	--	-------------------

<b>Total 2720 Vehicle Operation Services</b>			<b>\$14,456.56</b>	<b>\$7,178,742.58</b>
--	--	--	--------------------	-----------------------

General Fund (10)

2750 Nonpublic Transportation

Elementary

Secondary

Federal

Total

500 Other Purchased Services

513 Contracted Carriers

929,694.26

**Total Other Purchased Services**

**\$929,694.26**

**Total 2750 Nonpublic Transportation**

**\$929,694.26**

LEA : 104107903 Seneca Valley SD

Printed 11/18/2024 3:09:24 PM

**General Fund (10)**

	<u>Elementary</u>	<u>Secondary</u>	<u>Federal</u>	<u>Total</u>
<b>2800 Support Services – Central</b>				
<b>100 Personnel Services – Salaries</b>				
100 Personnel Services – Salaries				774,639.23
<b>Total Personnel Services – Salaries</b>				<b>\$774,639.23</b>
<b>200 Personnel Services – Employee Benefits</b>				
210 Group Insurance – Contracted Provider				201,369.46
220 Social Security Contributions				56,756.52
230 PSERS Retirement Contributions				260,796.68
240 Tuition Reimbursement				101,008.00
250 Unemployment Compensation				234.90
260 Workers' Compensation				1,573.39
280 Other Post-Employment Benefits (OPEB)				2,000.00
<b>Total Personnel Services – Employee Benefits</b>				<b>\$623,738.95</b>
<b>300 Purchased Professional and Technical Services</b>				
329 Professional Educational Services – Other				14,235.01
360 Employee Training and Development Services				24,865.30
<b>Total Purchased Professional and Technical Services</b>				<b>\$39,100.31</b>
<b>500 Other Purchased Services</b>				
550 Printing and Binding				54.00
580 Travel			2,249.40	3,197.73
<b>Total Other Purchased Services</b>			<b>\$2,249.40</b>	<b>\$3,251.73</b>
<b>600 Supplies</b>				
610 General Supplies				3,968.10
640 Books and Periodicals				916.61
<b>Total Supplies</b>				<b>\$4,884.71</b>
<b>800 Other Objects</b>				
810 Dues and Fees				4,344.00
<b>Total Other Objects</b>				<b>\$4,344.00</b>
<b>Total 2800 Support Services – Central</b>			<b>\$2,249.40</b>	<b>\$1,449,958.93</b>

General Fund (10)

2810 Planning, Research, Development and Evaluation Services

Elementary

Secondary

Federal

Total

100 Personnel Services – Salaries

100 Personnel Services – Salaries

159,574.46

**Total Personnel Services – Salaries**

**\$159,574.46**

200 Personnel Services – Employee Benefits

210 Group Insurance – Contracted Provider

23,764.57

220 Social Security Contributions

11,806.24

230 PSERS Retirement Contributions

54,000.70

250 Unemployment Compensation

25.00

260 Workers' Compensation

794.04

**Total Personnel Services – Employee Benefits**

**\$90,390.55**

**Total 2810 Planning, Research, Development and Evaluation Services**

**\$249,965.01**

**General Fund (10)**

**2830 Staff Services**

	<u>Elementary</u>	<u>Secondary</u>	<u>Federal</u>	<u>Total</u>
<b>100 Personnel Services – Salaries</b>				
100 Personnel Services – Salaries				425,198.00
<b>Total Personnel Services – Salaries</b>				<b>\$425,198.00</b>
<b>200 Personnel Services – Employee Benefits</b>				
210 Group Insurance – Contracted Provider				131,190.18
220 Social Security Contributions				30,623.71
230 PSERS Retirement Contributions				142,522.68
240 Tuition Reimbursement				101,008.00
250 Unemployment Compensation				159.89
260 Workers' Compensation				779.35
280 Other Post-Employment Benefits (OPEB)				2,000.00
<b>Total Personnel Services – Employee Benefits</b>				<b>\$408,283.81</b>
<b>300 Purchased Professional and Technical Services</b>				
329 Professional Educational Services – Other				14,235.01
360 Employee Training and Development Services				24,865.30
<b>Total Purchased Professional and Technical Services</b>				<b>\$39,100.31</b>
<b>500 Other Purchased Services</b>				
550 Printing and Binding				54.00
580 Travel				753.86
<b>Total Other Purchased Services</b>				<b>\$807.86</b>
<b>600 Supplies</b>				
610 General Supplies				2,897.10
640 Books and Periodicals				862.80
<b>Total Supplies</b>				<b>\$3,759.90</b>
<b>800 Other Objects</b>				
810 Dues and Fees				4,344.00
<b>Total Other Objects</b>				<b>\$4,344.00</b>
<b>Total 2830 Staff Services</b>				<b>\$881,493.88</b>

**General Fund (10)**

**2831 Supervision of Staff Services**

Elementary                      Secondary                      Federal                      Total

<b>100</b>	<b><u>Personnel Services – Salaries</u></b>			
	100 Personnel Services – Salaries			424,998.00
<b>Total Personnel Services – Salaries</b>				<b>\$424,998.00</b>
<b>200</b>	<b><u>Personnel Services – Employee Benefits</u></b>			
	210 Group Insurance – Contracted Provider			131,190.18
	220 Social Security Contributions			30,608.41
	230 PSERS Retirement Contributions			142,522.68
	250 Unemployment Compensation			159.39
	260 Workers' Compensation			779.35
	280 Other Post-Employment Benefits (OPEB)			2,000.00
<b>Total Personnel Services – Employee Benefits</b>				<b>\$307,260.01</b>
<b>300</b>	<b><u>Purchased Professional and Technical Services</u></b>			
	329 Professional Educational Services – Other			14,235.01
<b>Total Purchased Professional and Technical Services</b>				<b>\$14,235.01</b>
<b>500</b>	<b><u>Other Purchased Services</u></b>			
	550 Printing and Binding			54.00
	580 Travel			753.86
<b>Total Other Purchased Services</b>				<b>\$807.86</b>
<b>600</b>	<b><u>Supplies</u></b>			
	610 General Supplies			2,897.10
	640 Books and Periodicals			862.80
<b>Total Supplies</b>				<b>\$3,759.90</b>
<b>800</b>	<b><u>Other Objects</u></b>			
	810 Dues and Fees			1,844.00
<b>Total Other Objects</b>				<b>\$1,844.00</b>
<b>Total 2831 Supervision of Staff Services</b>				<b>\$752,904.78</b>

General Fund (10)

2832 Recruitment and Placement Services

Elementary

Secondary

Federal

Total

100 Personnel Services – Salaries

100 Personnel Services – Salaries

200.00

**Total Personnel Services – Salaries**

**\$200.00**

200 Personnel Services – Employee Benefits

220 Social Security Contributions

15.30

250 Unemployment Compensation

0.50

**Total Personnel Services – Employee Benefits**

**\$15.80**

**Total 2832 Recruitment and Placement Services**

**\$215.80**

General Fund (10)

2834 Staff Development Services – Non-Instructional, Certified Staff Only

Elementary

Secondary

Federal

Total

200 Personnel Services – Employee Benefits

240 Tuition Reimbursement

101,008.00

**Total Personnel Services – Employee Benefits**

**\$101,008.00**

300 Purchased Professional and Technical Services

360 Employee Training and Development Services

24,191.30

**Total Purchased Professional and Technical Services**

**\$24,191.30**

**Total 2834 Staff Development Services – Non-Instructional, Certified Staff Only**

**\$125,199.30**

General Fund (10)

2836 Staff Development Services – Non-Instructional, Non-Certified Staff Only

Elementary

Secondary

Federal

Total

300 Purchased Professional and Technical Services

360 Employee Training and Development Services

674.00

**Total Purchased Professional and Technical Services**

**\$674.00**

**Total 2836 Staff Development Services – Non-Instructional, Non-Certified Staff Only**

**\$674.00**

LEA : 104107903 Seneca Valley SD

Printed 11/18/2024 3:09:24 PM

General Fund (10)

2839 Other Staff Services

Elementary

Secondary

Federal

Total

800 Other Objects

810 Dues and Fees

2,500.00

**Total Other Objects**

**\$2,500.00**

**Total 2839 Other Staff Services**

**\$2,500.00**

**General Fund (10)**

2850 State and Federal Agency Liaison Services	<u>Elementary</u>	<u>Secondary</u>	<u>Federal</u>	<u>Total</u>
<b>100 Personnel Services – Salaries</b>				
100 Personnel Services – Salaries				67,146.07
<b>Total Personnel Services – Salaries</b>				<b>\$67,146.07</b>
<b>200 Personnel Services – Employee Benefits</b>				
210 Group Insurance – Contracted Provider				22,999.44
220 Social Security Contributions				5,007.47
230 PSERS Retirement Contributions				22,740.90
250 Unemployment Compensation				25.00
<b>Total Personnel Services – Employee Benefits</b>				<b>\$50,772.81</b>
<b>500 Other Purchased Services</b>				
580 Travel				194.47
<b>Total Other Purchased Services</b>				<b>\$194.47</b>
<b>600 Supplies</b>				
610 General Supplies				75.00
<b>Total Supplies</b>				<b>\$75.00</b>
<b>Total 2850 State and Federal Agency Liaison Services</b>				<b>\$118,188.35</b>

**General Fund (10)**

**2890 Other Support Services Central**

**100 Personnel Services – Salaries**

100 Personnel Services – Salaries

Elementary

Secondary

Federal

Total

122,720.70

**Total Personnel Services – Salaries**

**\$122,720.70**

**200 Personnel Services – Employee Benefits**

210 Group Insurance – Contracted Provider

23,415.27

220 Social Security Contributions

9,319.10

230 PSERS Retirement Contributions

41,532.40

250 Unemployment Compensation

25.01

**Total Personnel Services – Employee Benefits**

**\$74,291.78**

**500 Other Purchased Services**

580 Travel

2,249.40

2,249.40

**Total Other Purchased Services**

**\$2,249.40**

**\$2,249.40**

**600 Supplies**

610 General Supplies

996.00

640 Books and Periodicals

53.81

**Total Supplies**

**\$1,049.81**

**Total 2890 Other Support Services Central**

**\$2,249.40**

**\$200,311.69**

**General Fund (10)**

**2900 Other Support Services**

Elementary                      Secondary                      Federal                      Total

<b>100</b>	<b><u>Personnel Services – Salaries</u></b>			
	100 Personnel Services – Salaries			525,408.39
<b>Total Personnel Services – Salaries</b>				<b>\$525,408.39</b>
<b>200</b>	<b><u>Personnel Services – Employee Benefits</u></b>			
	210 Group Insurance – Contracted Provider			131,509.15
	220 Social Security Contributions			38,446.08
	230 PSERS Retirement Contributions			177,009.91
	250 Unemployment Compensation			155.65
	260 Workers' Compensation			680.17
	280 Other Post-Employment Benefits (OPEB)			1,500.00
<b>Total Personnel Services – Employee Benefits</b>				<b>\$349,300.96</b>
<b>300</b>	<b><u>Purchased Professional and Technical Services</u></b>			
	340 Technical Services			90,541.82
<b>Total Purchased Professional and Technical Services</b>				<b>\$90,541.82</b>
<b>400</b>	<b><u>Purchased Property Services</u></b>			
	430 Repairs and Maintenance Services			10,000.00
<b>Total Purchased Property Services</b>				<b>\$10,000.00</b>
<b>500</b>	<b><u>Other Purchased Services</u></b>			
	580 Travel			853.23
	595 IU Payments By Withholding			155,199.94
<b>Total Other Purchased Services</b>				<b>\$156,053.17</b>
<b>600</b>	<b><u>Supplies</u></b>			
	610 General Supplies			555.97
	650 Supplies & Fees – Technology Related			1,732,355.93
<b>Total Supplies</b>				<b>\$1,732,911.90</b>
<b>700</b>	<b><u>Property</u></b>			
	756 Capitalized Technology Equipment – Original			150,000.00
<b>Total Property</b>				<b>\$150,000.00</b>
<b>Total 2900 Other Support Services</b>				<b>\$3,014,216.24</b>

**General Fund (10)**

**2910 Support Services Not Listed Elsewhere In the 2000 Series**

	<u>Elementary</u>	<u>Secondary</u>	<u>Federal</u>	<u>Total</u>
<b>100 Personnel Services – Salaries</b>				
100 Personnel Services – Salaries				525,408.39
<b>Total Personnel Services – Salaries</b>				<b>\$525,408.39</b>
<b>200 Personnel Services – Employee Benefits</b>				
210 Group Insurance – Contracted Provider				131,509.15
220 Social Security Contributions				38,446.08
230 PSERS Retirement Contributions				177,009.91
250 Unemployment Compensation				155.65
260 Workers' Compensation				680.17
280 Other Post-Employment Benefits (OPEB)				1,500.00
<b>Total Personnel Services – Employee Benefits</b>				<b>\$349,300.96</b>
<b>300 Purchased Professional and Technical Services</b>				
340 Technical Services				90,541.82
<b>Total Purchased Professional and Technical Services</b>				<b>\$90,541.82</b>
<b>400 Purchased Property Services</b>				
430 Repairs and Maintenance Services				10,000.00
<b>Total Purchased Property Services</b>				<b>\$10,000.00</b>
<b>500 Other Purchased Services</b>				
580 Travel				853.23
595 IU Payments By Withholding				155,199.94
<b>Total Other Purchased Services</b>				<b>\$156,053.17</b>
<b>600 Supplies</b>				
610 General Supplies				555.97
650 Supplies & Fees – Technology Related				1,732,355.93
<b>Total Supplies</b>				<b>\$1,732,911.90</b>
<b>700 Property</b>				
756 Capitalized Technology Equipment – Original				150,000.00
<b>Total Property</b>				<b>\$150,000.00</b>
<b>Total 2910 Support Services Not Listed Elsewhere In the 2000 Series</b>				<b>\$3,014,216.24</b>

**General Fund (10)**

<b>3000 Operation of Non-Instructional Services</b>	<b><u>Total</u></b>
<b>100 Personnel Services – Salaries</b>	
100 Personnel Services – Salaries	1,334,131.78
<b>Total Personnel Services – Salaries</b>	<b>\$1,334,131.78</b>
<b>200 Personnel Services – Employee Benefits</b>	
210 Group Insurance – Contracted Provider	28,125.90
220 Social Security Contributions	102,469.65
230 PSERS Retirement Contributions	423,747.11
250 Unemployment Compensation	1,134.58
260 Workers’ Compensation	6,886.50
280 Other Post-Employment Benefits (OPEB)	1,500.00
<b>Total Personnel Services – Employee Benefits</b>	<b>\$563,863.74</b>
<b>300 Purchased Professional and Technical Services</b>	
323 Professional Educational Services – Other Educational Agencies	(1,871.17)
330 Other Professional Services	113,291.24
390 Other Purchased Professional and Technical Services	1,440.00
<b>Total Purchased Professional and Technical Services</b>	<b>\$112,860.07</b>
<b>400 Purchased Property Services</b>	
410 Cleaning Services	4,927.15
430 Repairs and Maintenance Services	13,917.59
440 Rentals	11,868.43
<b>Total Purchased Property Services</b>	<b>\$30,713.17</b>
<b>500 Other Purchased Services</b>	
510 Student Transportation Services	170,890.04
530 Communications	454.45
550 Printing and Binding	1,602.70
580 Travel	9,799.64
<b>Total Other Purchased Services</b>	<b>\$182,746.83</b>
<b>600 Supplies</b>	
610 General Supplies	146,720.08
650 Supplies & Fees – Technology Related	14,447.00
<b>Total Supplies</b>	<b>\$161,167.08</b>
<b>800 Other Objects</b>	
810 Dues and Fees	291,062.59
<b>Total Other Objects</b>	<b>\$291,062.59</b>
<b>Total 3000 Operation of Non-Instructional Services</b>	<b>\$2,676,545.26</b>

**General Fund (10)**

**3200 Student Activities**

	<u>Elementary</u>	<u>Secondary</u>	<u>Federal</u>	<u>Total</u>
<b>100 Personnel Services – Salaries</b>				
100 Personnel Services – Salaries				1,334,131.78
<b>Total Personnel Services – Salaries</b>				<b>\$1,334,131.78</b>
<b>200 Personnel Services – Employee Benefits</b>				
210 Group Insurance – Contracted Provider				28,125.90
220 Social Security Contributions				102,469.65
230 PSERS Retirement Contributions				423,747.11
250 Unemployment Compensation				1,134.58
260 Workers' Compensation				6,886.50
280 Other Post-Employment Benefits (OPEB)				1,500.00
<b>Total Personnel Services – Employee Benefits</b>				<b>\$563,863.74</b>
<b>300 Purchased Professional and Technical Services</b>				
323 Professional Educational Services – Other Educational Agencies				(1,871.17)
330 Other Professional Services				113,291.24
390 Other Purchased Professional and Technical Services				1,440.00
<b>Total Purchased Professional and Technical Services</b>				<b>\$112,860.07</b>
<b>400 Purchased Property Services</b>				
410 Cleaning Services				4,927.15
430 Repairs and Maintenance Services				13,917.59
440 Rentals				11,868.43
<b>Total Purchased Property Services</b>				<b>\$30,713.17</b>
<b>500 Other Purchased Services</b>				
510 Student Transportation Services				170,890.04
530 Communications				454.45
550 Printing and Binding				1,602.70
580 Travel				9,799.64
<b>Total Other Purchased Services</b>				<b>\$182,746.83</b>
<b>600 Supplies</b>				
610 General Supplies				146,720.08
650 Supplies & Fees – Technology Related				14,447.00
<b>Total Supplies</b>				<b>\$161,167.08</b>
<b>800 Other Objects</b>				
810 Dues and Fees				291,062.59
<b>Total Other Objects</b>				<b>\$291,062.59</b>
<b>Total 3200 Student Activities</b>				<b>\$2,676,545.26</b>

**General Fund (10)**

**4000 Facilities Acquisition, Construction and Improvement Services**

**Total**

**300 Purchased Professional and Technical Services**

330 Other Professional Services

63,956.00

**Total Purchased Professional and Technical Services**

**\$63,956.00**

**400 Purchased Property Services**

430 Repairs and Maintenance Services

93,239.30

**Total Purchased Property Services**

**\$93,239.30**

**Total 4000 Facilities Acquisition, Construction and Improvement Services**

**\$157,195.30**

General Fund (10)

4200 Existing Site Improvement Services

Elementary

Secondary

Federal

Total

300 Purchased Professional and Technical Services

330 Other Professional Services

63,956.00

**Total Purchased Professional and Technical Services**

**\$63,956.00**

**Total 4200 Existing Site Improvement Services**

**\$63,956.00**

LEA : 104107903 Seneca Valley SD

Printed 11/18/2024 3:09:52 PM

General Fund (10)

4600 Existing Building Improvement Services

Elementary

Secondary

Federal

Total

400 Purchased Property Services

430 Repairs and Maintenance Services

93,239.30

**Total Purchased Property Services**

**\$93,239.30**

**Total 4600 Existing Building Improvement Services**

**\$93,239.30**

**General Fund (10)**

**5000 Other Expenditures and Financing Uses**

**Total**

**800 Other Objects**

830 Interest	4,470,955.39
880 Refunds of Prior Years' Receipts	336,615.77

<b>Total Other Objects</b>	<b>\$4,807,571.16</b>
----------------------------	-----------------------

**900 Other Uses of Funds**

910 Redemption of Principal	7,193,221.34
932 Capital Reserve Fund Transfers Applicable To Fund 32	7,647,724.00
939 Other Fund Transfers	1,123,276.00

<b>Total Other Uses of Funds</b>	<b>\$15,964,221.34</b>
----------------------------------	------------------------

<b>Total 5000 Other Expenditures and Financing Uses</b>	<b>\$20,771,792.50</b>
---	------------------------

General Fund (10)

5100 Debt Service / Other Expenditures and Financing Uses	<u>Elementary</u>	<u>Secondary</u>	<u>Federal</u>	<u>Total</u>
<b>800 Other Objects</b>				
830 Interest				4,470,955.39
880 Refunds of Prior Years' Receipts				336,615.77
<b>Total Other Objects</b>				<b>\$4,807,571.16</b>
<b>900 Other Uses of Funds</b>				
910 Redemption of Principal				7,193,221.34
<b>Total Other Uses of Funds</b>				<b>\$7,193,221.34</b>
<b>Total 5100 Debt Service / Other Expenditures and Financing Uses</b>				<b>\$12,000,792.50</b>

General Fund (10)

5110 Debt Service

Elementary

Secondary

Federal

Total

800 Other Objects

830 Interest

4,455,900.00

**Total Other Objects**

**\$4,455,900.00**

900 Other Uses of Funds

910 Redemption of Principal

6,830,000.00

**Total Other Uses of Funds**

**\$6,830,000.00**

**Total 5110 Debt Service**

**\$11,285,900.00**

LEA : 104107903 Seneca Valley SD

Printed 11/18/2024 3:10:11 PM

General Fund (10)

5130 Refund of Prior Year Revenues / Receipts

Elementary

Secondary

Federal

Total

800 Other Objects

880 Refunds of Prior Years' Receipts

336,615.77

**Total Other Objects**

**\$336,615.77**

**Total 5130 Refund of Prior Year Revenues / Receipts**

**\$336,615.77**

General Fund (10)

5140 Leases and Other Right-to-Use Arrangements

Elementary

Secondary

Federal

Total

800 Other Objects

830 Interest 15,055.39

**Total Other Objects \$15,055.39**

900 Other Uses of Funds

910 Redemption of Principal 363,221.34

**Total Other Uses of Funds \$363,221.34**

**Total 5140 Leases and Other Right-to-Use Arrangements \$378,276.73**

General Fund (10)

5200 Interfund Transfers – Out

Elementary

Secondary

Federal

Total

900 Other Uses of Funds

932 Capital Reserve Fund Transfers Applicable To Fund 32

7,647,724.00

939 Other Fund Transfers

1,123,276.00

**Total Other Uses of Funds**

**\$8,771,000.00**

**Total 5200 Interfund Transfers – Out**

**\$8,771,000.00**

LEA : 104107903 Seneca Valley SD

Printed 11/18/2024 3:10:11 PM

General Fund (10)

5220 Special Revenue Fund Transfers

Elementary

Secondary

Federal

Total

900 Other Uses of Funds

939 Other Fund Transfers

111,000.00

**Total Other Uses of Funds**

**\$111,000.00**

**Total 5220 Special Revenue Fund Transfers**

**\$111,000.00**

General Fund (10)

5230 Capital Projects Fund Transfers

Elementary

Secondary

Federal

Total

900 Other Uses of Funds

932 Capital Reserve Fund Transfers Applicable To Fund 32

7,647,724.00

939 Other Fund Transfers

1,012,276.00

**Total Other Uses of Funds**

**\$8,660,000.00**

**Total 5230 Capital Projects Fund Transfers**

**\$8,660,000.00**

LEA : 104107903 Seneca Valley SD

Printed 11/18/2024 3:09:30 PM

**Public Purpose (Expendable) Trust Fund (27)**

**2000 Support Services**

**Total**

**800 Other Objects**

820 Claims and Judgments Against the LEA

35.00

**Total Other Objects**

**\$35.00**

**Total 2000 Support Services**

**\$35.00**

LEA : 104107903 Seneca Valley SD

Printed 11/18/2024 3:09:30 PM

Public Purpose (Expendable) Trust Fund (27)

2300 Support Services – Administration

Elementary

Secondary

Federal

Total

800 Other Objects

820 Claims and Judgments Against the LEA

35.00

**Total Other Objects**

**\$35.00**

**Total 2300 Support Services – Administration**

**\$35.00**

LEA : 104107903 Seneca Valley SD

Printed 11/18/2024 3:09:30 PM

Public Purpose (Expendable) Trust Fund (27)

2310 Board Services

Elementary

Secondary

Federal

Total

800 Other Objects

820 Claims and Judgments Against the LEA

35.00

**Total Other Objects**

**\$35.00**

**Total 2310 Board Services**

**\$35.00**

LEA : 104107903 Seneca Valley SD

Printed 11/18/2024 3:09:44 PM

**Public Purpose (Expendable) Trust Fund (27)**

**3000 Operation of Non-Instructional Services**

**Total**

**800 Other Objects**

890 Miscellaneous Expenditures

100.00

**Total Other Objects**

**\$100.00**

**Total 3000 Operation of Non-Instructional Services**

**\$100.00**

LEA : 104107903 Seneca Valley SD

Printed 11/18/2024 3:09:44 PM

Public Purpose (Expendable) Trust Fund (27)

3400 Scholarships and Awards

Elementary

Secondary

Federal

Total

800 Other Objects

890 Miscellaneous Expenditures

100.00

**Total Other Objects**

**\$100.00**

**Total 3400 Scholarships and Awards**

**\$100.00**

LEA : 104107903 Seneca Valley SD

Printed 11/18/2024 3:10:00 PM

Capital Reserve Fund - § 1431 (32)

4000 Facilities Acquisition, Construction and Improvement Services

Total

300 Purchased Professional and Technical Services

330 Other Professional Services 167,680.00

390 Other Purchased Professional and Technical Services 93,037.31

**Total Purchased Professional and Technical Services \$260,717.31**

400 Purchased Property Services

450 Construction Services 5,661,293.26

**Total Purchased Property Services \$5,661,293.26**

500 Other Purchased Services

520 Insurance – General 647.00

549 Other Advertising/Public Relations 6,213.75

**Total Other Purchased Services \$6,860.75**

700 Property

752 Capital Equipment – Original and Additional 111,039.83

762 Capitalized Equipment - Replacement 6,511.50

**Total Property \$117,551.33**

**Total 4000 Facilities Acquisition, Construction and Improvement Services \$6,046,422.65**

LEA : 104107903 Seneca Valley SD

Printed 11/18/2024 3:10:00 PM

Capital Reserve Fund - § 1431 (32)

4200 Existing Site Improvement Services

Elementary

Secondary

Federal

Total

300 Purchased Professional and Technical Services

330 Other Professional Services

137,047.50

390 Other Purchased Professional and Technical Services

1,047.00

**Total Purchased Professional and Technical Services**

**\$138,094.50**

400 Purchased Property Services

450 Construction Services

85,556.81

**Total Purchased Property Services**

**\$85,556.81**

500 Other Purchased Services

549 Other Advertising/Public Relations

2,316.60

**Total Other Purchased Services**

**\$2,316.60**

**Total 4200 Existing Site Improvement Services**

**\$225,967.91**

LEA : 104107903 Seneca Valley SD

Printed 11/18/2024 3:10:00 PM

Capital Reserve Fund - § 1431 (32)

4300 Architecture and Engineering Services / Educational Specifications Development – Original and Additional

Elementary

Secondary

Federal

Total

300 Purchased Professional and Technical Services

330 Other Professional Services

27,567.50

**Total Purchased Professional and Technical Services**

**\$27,567.50**

**Total 4300 Architecture and Engineering Services / Educational Specifications Development – Original and Additional**

**\$27,567.50**

LEA : 104107903 Seneca Valley SD

Printed 11/18/2024 3:10:00 PM

Capital Reserve Fund - § 1431 (32)

4400 Architecture and Engineering Services / Educational Specifications – Improvements

Elementary

Secondary

Federal

Total

300 Purchased Professional and Technical Services

330 Other Professional Services

1,875.00

390 Other Purchased Professional and Technical Services

18,770.00

**Total Purchased Professional and Technical Services**

**\$20,645.00**

**Total 4400 Architecture and Engineering Services / Educational Specifications – Improvements**

**\$20,645.00**

Capital Reserve Fund - § 1431 (32)

4500 Building Acquisition and Construction Services – Original and Additional	<u>Elementary</u>	<u>Secondary</u>	<u>Federal</u>	<u>Total</u>
<b>300 <u>Purchased Professional and Technical Services</u></b>				
390 Other Purchased Professional and Technical Services				55,822.15
<b>Total Purchased Professional and Technical Services</b>				<b>\$55,822.15</b>
<b>400 <u>Purchased Property Services</u></b>				
450 Construction Services				3,745,528.28
<b>Total Purchased Property Services</b>				<b>\$3,745,528.28</b>
<b>500 <u>Other Purchased Services</u></b>				
520 Insurance – General				647.00
<b>Total Other Purchased Services</b>				<b>\$647.00</b>
<b>700 <u>Property</u></b>				
752 Capital Equipment – Original and Additional				111,039.83
<b>Total Property</b>				<b>\$111,039.83</b>
<b>Total 4500 Building Acquisition and Construction Services – Original and Additional</b>				<b>\$3,913,037.26</b>

LEA : 104107903 Seneca Valley SD

Printed 11/18/2024 3:10:00 PM

Capital Reserve Fund - § 1431 (32)

4600 Existing Building Improvement Services

Elementary

Secondary

Federal

Total

300 Purchased Professional and Technical Services

330 Other Professional Services

1,190.00

390 Other Purchased Professional and Technical Services

17,398.16

**Total Purchased Professional and Technical Services**

**\$18,588.16**

400 Purchased Property Services

450 Construction Services

1,830,208.17

**Total Purchased Property Services**

**\$1,830,208.17**

500 Other Purchased Services

549 Other Advertising/Public Relations

3,897.15

**Total Other Purchased Services**

**\$3,897.15**

700 Property

762 Capitalized Equipment - Replacement

6,511.50

**Total Property**

**\$6,511.50**

**Total 4600 Existing Building Improvement Services**

**\$1,859,204.98**

**Other Capital Projects Fund (39)**

**4000 Facilities Acquisition, Construction and Improvement Services**

**Total**

**300 Purchased Professional and Technical Services**

330 Other Professional Services 1,232,950.00

390 Other Purchased Professional and Technical Services 210,454.90

**Total Purchased Professional and Technical Services \$1,443,404.90**

**400 Purchased Property Services**

450 Construction Services 535,623.52

**Total Purchased Property Services \$535,623.52**

**700 Property**

752 Capital Equipment – Original and Additional 263,126.37

**Total Property \$263,126.37**

**Total 4000 Facilities Acquisition, Construction and Improvement Services \$2,242,154.79**

LEA : 104107903 Seneca Valley SD

Printed 11/18/2024 3:10:03 PM

Other Capital Projects Fund (39)

4300 Architecture and Engineering Services / Educational Specifications Development – Original and Additional

Elementary

Secondary

Federal

Total

300 Purchased Professional and Technical Services

330 Other Professional Services

1,232,950.00

**Total Purchased Professional and Technical Services**

**\$1,232,950.00**

**Total 4300 Architecture and Engineering Services / Educational Specifications Development – Original and Additional**

**\$1,232,950.00**

**Other Capital Projects Fund (39)**

**4500 Building Acquisition and Construction Services – Original and Additional**

Elementary

Secondary

Federal

Total

**300 Purchased Professional and Technical Services**

390 Other Purchased Professional and Technical Services

210,454.90

**Total Purchased Professional and Technical Services**

**\$210,454.90**

**400 Purchased Property Services**

450 Construction Services

535,623.52

**Total Purchased Property Services**

**\$535,623.52**

**700 Property**

752 Capital Equipment – Original and Additional

263,126.37

**Total Property**

**\$263,126.37**

**Total 4500 Building Acquisition and Construction Services – Original and Additional**

**\$1,009,204.79**

	<u>General Fund(10)</u>	<u>Student Sponsored Activity Fund(21)</u>	<u>Public Purpose Trust(27)</u>	<u>Other Compt Approved (28)</u>	<u>Athletic / Activity(29)</u>
<b>1000 Instruction</b>					
1100 Regular Programs - Elementary / Secondary	70,843,778.88				
1200 Special Programs - Elementary / Secondary	26,705,133.57				
1300 Vocational Education	4,452,456.55				
1400 Other Instructional Programs - Elementary / Secondary	385,184.58				
1500 Nonpublic School Programs	43,566.99				
<b>Total Instruction</b>	<b>\$102,430,120.57</b>				
<b>2000 Support Services</b>					
2100 Support Services - Students	5,312,806.73				
2200 Support Services - Instructional Staff	3,084,089.62				
2300 Support Services - Administration	8,207,998.63		35.00		
2400 Support Services - Pupil Health	1,492,176.16				
2500 Support Services - Business	803,546.62				
2600 Operation and Maintenance of Plant Services	11,123,018.25				
2700 Student Transportation Services	8,448,202.85				
2800 Support Services - Central	1,449,958.93				
2900 Other Support Services	3,014,216.24				
<b>Total Support Services</b>	<b>\$42,936,014.03</b>		<b>\$35.00</b>		
<b>3000 Operation of Non-Instructional Services</b>					
3200 Student Activities	2,676,545.26				
3400 Scholarships and Awards				100.00	
<b>Total Operation of Non-Instructional Services</b>	<b>\$2,676,545.26</b>			<b>\$100.00</b>	
<b>4000 Facilities Acquisition, Construction and Improvement Services</b>					
4200 Existing Site Improvement Services	63,956.00				
4300 Architecture and Engineering Services / Educational Specifications Development - Original and Additional					
4400 Architecture and Engineering Services / Educational Specifications - Improvements					
4500 Building Acquisition and Construction Services - Original and Additional					
4600 Existing Building Improvement Services	93,239.30				
<b>Total Facilities Acquisition, Construction and Improvement Services</b>	<b>\$157,195.30</b>				
<b>5000 Other Expenditures and Financing Uses</b>					
5100 Debt Service / Other Expenditures and Financing Uses	12,000,792.50				
5200 Interfund Transfers - Out	8,771,000.00				
<b>Total Other Expenditures and Financing Uses</b>	<b>\$20,771,792.50</b>				
<b>TOTAL ACTUAL EXPENDITURES &amp; OTHER FINANCING USES</b>	<b>\$168,971,667.66</b>			<b>\$135.00</b>	

	<u>Capital Reserve (690.1850)(31)</u>	<u>Capital Reserve (1431)(32)</u>	<u>Other Capital Projects Fund(39)</u>	<u>Debt Service(40)</u>	<u>Permanent(90)</u>
<b>1000 Instruction</b>					
1100 Regular Programs - Elementary / Secondary					
1200 Special Programs - Elementary / Secondary					
1300 Vocational Education					
1400 Other Instructional Programs - Elementary / Secondary					
1500 Nonpublic School Programs					
<b>Total Instruction</b>					
<b>2000 Support Services</b>					
2100 Support Services - Students					
2200 Support Services - Instructional Staff					
2300 Support Services - Administration					
2400 Support Services - Pupil Health					
2500 Support Services - Business					
2600 Operation and Maintenance of Plant Services					
2700 Student Transportation Services					
2800 Support Services - Central					
2900 Other Support Services					
<b>Total Support Services</b>					
<b>3000 Operation of Non-Instructional Services</b>					
3200 Student Activities					
3400 Scholarships and Awards					
<b>Total Operation of Non-Instructional Services</b>					
<b>4000 Facilities Acquisition, Construction and Improvement Services</b>					
4200 Existing Site Improvement Services		225,967.91			
4300 Architecture and Engineering Services / Educational Specifications Development - Original and Additional		27,567.50	1,232,950.00		
4400 Architecture and Engineering Services / Educational Specifications - Improvements		20,645.00			
4500 Building Acquisition and Construction Services - Original and Additional		3,913,037.26	1,009,204.79		
4600 Existing Building Improvement Services		1,859,204.98			
<b>Total Facilities Acquisition, Construction and Improvement Services</b>		<b>\$6,046,422.65</b>	<b>\$2,242,154.79</b>		
<b>5000 Other Expenditures and Financing Uses</b>					
5100 Debt Service / Other Expenditures and Financing Uses					
5200 Interfund Transfers - Out					
<b>Total Other Expenditures and Financing Uses</b>					
<b>TOTAL ACTUAL EXPENDITURES &amp; OTHER FINANCING USES</b>		<b>\$6,046,422.65</b>	<b>\$2,242,154.79</b>		

**Total**

<b>1000 Instruction</b>	
1100 Regular Programs - Elementary / Secondary	70,843,778.88
1200 Special Programs - Elementary / Secondary	26,705,133.57
1300 Vocational Education	4,452,456.55
1400 Other Instructional Programs - Elementary / Secondary	385,184.58
1500 Nonpublic School Programs	43,566.99
<b>Total Instruction</b>	<b>\$102,430,120.57</b>
<b>2000 Support Services</b>	
2100 Support Services - Students	5,312,806.73
2200 Support Services - Instructional Staff	3,084,089.62
2300 Support Services - Administration	8,208,033.63
2400 Support Services - Pupil Health	1,492,176.16
2500 Support Services - Business	803,546.62
2600 Operation and Maintenance of Plant Services	11,123,018.25
2700 Student Transportation Services	8,448,202.85
2800 Support Services - Central	1,449,958.93
2900 Other Support Services	3,014,216.24
<b>Total Support Services</b>	<b>\$42,936,049.03</b>
<b>3000 Operation of Non-Instructional Services</b>	
3200 Student Activities	2,676,545.26
3400 Scholarships and Awards	100.00
<b>Total Operation of Non-Instructional Services</b>	<b>\$2,676,645.26</b>
<b>4000 Facilities Acquisition, Construction and Improvement Services</b>	
4200 Existing Site Improvement Services	289,923.91
4300 Architecture and Engineering Services / Educational Specifications Development - Original and Additional	1,260,517.50
4400 Architecture and Engineering Services / Educational Specifications - Improvements	20,645.00
4500 Building Acquisition and Construction Services - Original and Additional	4,922,242.05
4600 Existing Building Improvement Services	1,952,444.28
<b>Total Facilities Acquisition, Construction and Improvement Services</b>	<b>\$8,445,772.74</b>
<b>5000 Other Expenditures and Financing Uses</b>	
5100 Debt Service / Other Expenditures and Financing Uses	12,000,792.50
5200 Interfund Transfers - Out	8,771,000.00
<b>Total Other Expenditures and Financing Uses</b>	<b>\$20,771,792.50</b>
<b>TOTAL ACTUAL EXPENDITURES &amp; OTHER FINANCING USES</b>	<b>\$177,260,380.10</b>

LEA : 104107903 Seneca Valley SD

Printed 11/18/2024 3:10:42 PM

**PSERS Salary Data (Salary Data should relate to the General Fund only)**

<b>Amount Description</b>	<b>Amount</b>
Total Salary Base for salaries subject to PSERS withholding	70,144,171.65
Total Federally Funded salaries subject to PSERS withholding	1,181,642.73
	<hr/>

**Title I Expenditure Data**

<b>Amount Description</b>	<b>Amount</b>
Expenditures Funded with Current Title I Funds	290,370.24
<b>Total Title I Expenditure Data</b>	<b>\$290,370.24</b>
	<hr/>

**Title IV Revenue Data**

<b>Amount Description</b>	<b>Amount</b>
Revenue from Title IV-A-1: Student Support and Academic Enrichment Grants	20,652.00
	<hr/>

1 .	<b><u>Current Special Education Expenditures within Function 1000</u></b> See list of exclusions in the note below.	23,093,182.21
2 .	<b><u>Current Special Education Expenditures within Function 2000</u></b> See list of exclusions in the note below.	6,230,365.83
2A.	<b><u>Current Special Education Expenditures within Sub-Function 2100</u></b> This data should also be included in line 2 above. See list of exclusions in the note below.	793,862.75
2B.	<b><u>Current Special Education Expenditures within Sub-Function 2200</u></b> This data should also be included in line 2 above. See list of exclusions in the note below.	452,461.29
2C.	<b><u>Current Special Education Expenditures within Sub-Function 2700</u></b> This data should also be included in line 2 above. See list of exclusions in the note below.	1,123,528.74
3.	<b><u>Current Special Education Expenditures within Sub-Function 3100</u></b> See list of exclusions in the note below.	635,349.41
4.	<b><u>Current Special Education Expenditures within Sub-Function 3200</u></b> See list of exclusions in the note below.	399,969.69

Note: The Current Special Education Expenditure amounts for each line should be calculated as follows:

- \* Include the total expenditures for special education costs from all governmental funds and the food service fund 51 for the function/sub-function requested
- \* Exclude data from sub-functions: 1243,1450,1500,1600,1807,2280,2450,2750,2990
- \* Exclude data from objects: 322,511,512,516,561,562,564,566,592,593,594,595,596,597,700,830,899

**Benefits for Staff Relative to Collective Bargaining Agreements**

	OBJECT	COVERED	NOT COVERED	TOTAL
<b>10 General Fund</b>	No Self Insurance data to report			
	211 Medical Insurance	13,125,371.13	1,118,995.32	14,244,366.45
	212 Dental Insurance	461,267.90	46,255.40	507,523.30
	215 Eye Care Insurance	74,670.34	7,250.40	81,920.74
	216 Prescription Insurance			
	271 Self-Insurance Medical Benefits			
	272 Self-Insurance Dental Benefits			
	275 Self-Insurance Eye Care Benefits			
	276 Self-Insurance Prescription Benefits			
	<b>FUND TOTAL</b>		<b>\$13,661,309.37</b>	<b>\$1,172,501.12</b>
<b>50 Enterprise Fund</b>	No Self Insurance data to report			
	211 Medical Insurance		56,857.48	56,857.48
	212 Dental Insurance		1,396.06	1,396.06
	215 Eye Care Insurance		2,397.25	2,397.25
	216 Prescription Insurance			
	271 Self-Insurance Medical Benefits			
	272 Self-Insurance Dental Benefits			
	275 Self-Insurance Eye Care Benefits			
	276 Self-Insurance Prescription Benefits			
	<b>FUND TOTAL</b>		<b>\$60,650.79</b>	<b>\$60,650.79</b>
<b>60 Internal Service Fund</b>	No Self Insurance data to report			
	211 Medical Insurance			
	212 Dental Insurance			
	215 Eye Care Insurance			
	216 Prescription Insurance			
	271 Self-Insurance Medical Benefits			
	272 Self-Insurance Dental Benefits			
	275 Self-Insurance Eye Care Benefits			
	276 Self-Insurance Prescription Benefits			
	<b>FUND TOTAL</b>			
<b>Total of All Funds</b>		<b>\$13,661,309.37</b>	<b>\$1,233,151.91</b>	<b>\$14,894,461.28</b>

LEA : 104107903 Seneca Valley SD

Printed 11/18/2024 3:10:49 PM

Function	Special Education (Prior Year)	Nonspecial Education (Prior Year)	Total (Prior Year)	Special Education (Current Year)	Nonspecial Education (Current Year)	Total (Current Year)
2120 Guidance Services	523,820.64	2,968,316.94	3,492,137.58	538,895.88	3,053,743.32	3,592,639.20
2140 Psychological Services	118,046.99	1,193,586.21	1,311,633.20	126,491.05	1,278,965.02	1,405,456.07
2150 Speech Pathology and Audiology Services	1,585.65	3,529.35	5,115.00	1,478.70	3,291.30	4,770.00
2160 Social Work Services						
2260 Instruction and Curriculum Development Services	175,289.78	993,308.78	1,168,598.56	191,371.26	1,084,437.14	1,275,808.40
2350 Legal and Accounting Services	9,655.01	54,711.73	64,366.74	10,549.50	87,155.17	97,704.67
2420 Medical Services	6,149.50	14,392.18	20,541.68	6,149.50	22,144.92	28,294.42
2440 Nursing Services	424,673.04	945,240.00	1,369,913.04	453,536.74	1,009,485.00	1,463,021.74
2700 Student Transportation Services	1,290,352.90	7,222,381.05	8,512,733.95	1,363,379.15	7,084,823.70	8,448,202.85
<b>Total</b>	<b>\$2,549,573.51</b>	<b>\$13,395,466.24</b>	<b>\$15,945,039.75</b>	<b>\$2,691,851.78</b>	<b>\$13,624,045.57</b>	<b>\$16,315,897.35</b>

LEA : 104107903 Seneca Valley SD

Printed 11/18/2024 3:10:51 PM

(PRINCIPAL AMOUNTS ONLY)

**GOVERNMENTAL FUNDS/ ACTIVITIES**

	Short-Term Borrowing	General Obligation Bonds/Notes	Authority Building Obligations	Leases, Other Right to Use Arrangements	Extended Term Financing Agreements	Other Long Term Debt/Liabilities	OPEB, Comp Abs, Net Pension Liab	Total
1. Debt at Beginning of Fiscal Year		104,275,000.00		552,268.45			229,872,964.55	334,700,233.00
2. Additional Debt Incurred During Year				763,721.29			5,648,589.25	6,412,310.54
3. Retirements and Repayments		6,830,000.00		363,221.34			46,421.05	7,239,642.39
4. Debt at End of Fiscal Year		97,445,000.00		952,768.40			235,475,132.75	333,872,901.15
5. Accreted Interest at End Of Fiscal Year								
6. Total Debt and Accreted Interest		97,445,000.00		952,768.40			235,475,132.75	333,872,901.15
7. Current Portion P&I - Due within 1 year		11,132,937.50		348,840.00				11,481,777.50
8. Interest Paid during current fiscal year		4,455,900.00		15,055.39				4,470,955.39

(PRINCIPAL AMOUNTS ONLY)

**PROPRIETARY FUNDS**

	Short-Term Borrowing	General Obligation Bonds/Notes	Authority Building Obligations	Leases, Other Right to Use Arrangements	Extended Term Financing Agreements	Other Long Term Debt/Liabilities	OPEB, Comp Abs, Net Pension Liab	Total
1. Debt at Beginning of Fiscal Year							4,017,650.00	4,017,650.00
2. Additional Debt Incurred During Year							75,480.00	75,480.00
3. Retirements and Repayments							137.50	137.50
4. Debt at End of Fiscal Year							4,092,992.50	4,092,992.50
5. Accreted Interest at End Of Fiscal Year								
6. Total Debt and Accreted Interest							4,092,992.50	4,092,992.50
7. Current Portion P&I - Due within 1 year								
8. Interest Paid during current fiscal year								

**Total Principal and Interest Payments Made by Your School - All Funds**

Function	Fund		Principal (910)	Principal (920)	Interest (830)	Total (Principal +Interest)	Misc Other Uses (990)
5110	10	General Fund	6,830,000.00		4,455,900.00	11,285,900.00	
5110	20	Special Revenue Funds					
5110	30	Capital Projects Funds					
5110	40	Debt Service Fund					
5110	90	Permanent Fund					
5120	10	General Fund					
5120	20	Special Revenue Funds					
5120	30	Capital Projects Funds					
5120	40	Debt Service Fund					
5140	10	General Fund	363,221.34		15,055.39	378,276.73	
5140	20	Special Revenue Funds					
5140	30	Capital Projects Funds					
5140	40	Debt Service Fund					
5140	90	Permanent Fund					
<b>Total Debt Payments - Governmental Funds</b>			<b>\$7,193,221.34</b>		<b>\$4,470,955.39</b>	<b>\$11,664,176.73</b>	

Function	Fund		Principal (910)	Principal (920)	Interest (830)	Total (Principal +Interest)
5110	50	Enterprise Fund				
5110	60	Internal Service Fund				
5120	50	Enterprise Fund				
5120	60	Internal Service Fund				
5140	50	Enterprise Fund				
5140	60	Internal Service Fund				
<b>Total Debt Payments - Proprietary Funds</b>						

**Debt Details**  
**Governmental Funds/ Activities**

Debt Category	Debt Issue Date (MM/YYYY)	Principal Amounts Only			Debt at End of Fiscal Year	Current Portion Due Within One Year (Principal and Interest)	Interest Paid During Fiscal Year
		Debt at Beginning of Fiscal Year	Additions	Reductions / Repayments			
General Obligation Bonds/Notes – CIB	02/2022	18,695,000.00		5,000.00	18,690,000.00	678,200.00	673,350.00
General Obligation Bonds/Notes – CIB	02/2021	20,915,000.00		5,000.00	20,910,000.00	840,975.00	836,125.00
General Obligation Bonds/Notes – CIB	02/2020	12,785,000.00		6,810,000.00	5,975,000.00	6,214,000.00	511,400.00
General Obligation Bonds/Notes – CIB	07/2018	16,630,000.00		5,000.00	16,625,000.00	816,200.00	811,350.00
General Obligation Bonds/Notes – CIB	05/2015	6,355,000.00		5,000.00	6,350,000.00	1,277,500.00	317,612.50
General Obligation Bonds/Notes – CIB	05/2015	1,960,000.00			1,960,000.00	98,000.00	98,000.00
General Obligation Bonds/Notes – CIB	05/2015	26,935,000.00			26,935,000.00	1,208,062.50	1,208,062.50
Leases and Other Right to Use Arrangements		552,268.45	763,721.29	363,221.34	952,768.40	348,840.00	15,055.39
Other Post-Employment Benefits (OPEB)		39,784,850.00	1,868,178.00		41,653,028.00		
Compensated Absences		1,213,694.55	88,751.25	46,421.05	1,256,024.75		
Net Pension Liability		188,874,420.00	3,691,660.00		192,566,080.00		
<b>Totals for Debt Entered:</b>		<b>\$334,700,233.00</b>	<b>\$6,412,310.54</b>	<b>\$7,239,642.39</b>	<b>\$333,872,901.15</b>	<b>\$11,481,777.50</b>	<b>\$4,470,955.39</b>

**Bond Details**  
**Proprietary Funds**

Debt Category	Debt Issue Date (MM/YYYY)	Principal Amounts Only			Debt at End of Fiscal Year	Current Portion Due Within One Year (Principal and Interest)	Interest Paid During Fiscal Year
		Debt at Beginning of Fiscal Year	Additions	Reductions / Repayments			
Other Post-Employment Benefits (OPEB)		159,220.00	140.00		159,360.00		
Compensated Absences		3,850.00		137.50	3,712.50		
Net Pension Liability		3,854,580.00	75,340.00		3,929,920.00		
<b>Totals for Debt Entered:</b>		<b>\$4,017,650.00</b>	<b>\$75,480.00</b>	<b>\$137.50</b>	<b>\$4,092,992.50</b>		

**General Fund (10)**

<b>Section 1: Tuition/Purchased Services as Reported within Expenditure Detail</b>	<b>Amount</b>
Tuition Reported in General Fund Expenditures 1000-560	5,922,396.85
Purchased Services in General Fund Expenditures 1000-594 and 1000-597	
<b>Section 1 Total</b>	<b>\$5,922,396.85</b>

<b>Section 2: Tuition Paid to Institution Types During Fiscal Year</b>	<b>Tuition Paid For Nonspecial Education</b>	<b>Tuition Paid For Special Education</b>	<b>Total</b>
1 1306 Institutions			
2 Institutionalized Children's Programs			
3 Juveniles Incarcerated in Adult Facilities			
4 Residential Treatment Facilities	98,365.38	2,118,334.95	2,216,700.33
5 Other Local Education Agencies	6,722.86	121,870.44	128,593.30
6 Brick and Mortar Charter Schools	244,388.68	191,046.61	435,435.29
7 Cyber Charter Schools	831,982.40	862,267.40	1,694,249.80
8 Career and Technology Centers	350,967.50	365,292.71	716,260.21
9 Approved Private Schools		728,895.94	728,895.94
10 PA Chartered Schools for the Deaf and Blind			
11 Private Residential Rehabilitative Institutions	2,261.98		2,261.98
12 Juvenile Detention Centers			
13 Special Program Jointures			
14 Other Tuition Not Included Elsewhere In This Section			
<b>Section 2 Total</b>	<b>\$1,534,688.80</b>	<b>\$4,387,708.05</b>	<b>\$5,922,396.85</b>

LEA : 104107903 Seneca Valley SD

Printed 11/18/2024 3:11:09 PM

**Food Service / Cafeteria Operations Fund (51)**

**3000 Operation of Non-Instructional Services**

**Total**

**100 Personnel Services – Salaries**

100 Personnel Services – Salaries 1,329,970.19

**Total Personnel Services – Salaries \$1,329,970.19**

**200 Personnel Services – Employee Benefits**

210 Group Insurance – Contracted Provider 60,999.25

220 Social Security Contributions 100,397.07

230 PSERS Retirement Contributions 411,925.22

250 Unemployment Compensation 1,670.41

260 Workers' Compensation 1,308.20

**Total Personnel Services – Employee Benefits \$576,300.15**

**300 Purchased Professional and Technical Services**

390 Other Purchased Professional and Technical Services 1,856.12

**Total Purchased Professional and Technical Services \$1,856.12**

**400 Purchased Property Services**

420 Utility Services 26,725.67

430 Repairs and Maintenance Services 47,721.44

**Total Purchased Property Services \$74,447.11**

**500 Other Purchased Services**

530 Communications 1,221.24

550 Printing and Binding 6,827.59

580 Travel 2,656.48

**Total Other Purchased Services \$10,705.31**

**600 Supplies**

610 General Supplies 27,911.87

620 Energy 127,062.03

630 Food 1,993,134.55

**Total Supplies \$2,148,108.45**

**700 Property**

740 Depreciation 125,143.79

**Total Property \$125,143.79**

**800 Other Objects**

810 Dues and Fees 509.25

**Total Other Objects \$509.25**

**Total 3000 Operation of Non-Instructional Services \$4,267,040.37**

**Food Service / Cafeteria Operations Fund (51)**

	<u>Elementary</u>	<u>Secondary</u>	<u>Federal</u>	<u>Total</u>
<b>3100 Food Services</b>				
<b>100 Personnel Services – Salaries</b>				
100 Personnel Services – Salaries				1,329,970.19
<b>Total Personnel Services – Salaries</b>				<b>\$1,329,970.19</b>
<b>200 Personnel Services – Employee Benefits</b>				
210 Group Insurance – Contracted Provider				60,999.25
220 Social Security Contributions				100,397.07
230 PSERS Retirement Contributions				411,925.22
250 Unemployment Compensation				1,670.41
260 Workers' Compensation				1,308.20
<b>Total Personnel Services – Employee Benefits</b>				<b>\$576,300.15</b>
<b>300 Purchased Professional and Technical Services</b>				
390 Other Purchased Professional and Technical Services				1,856.12
<b>Total Purchased Professional and Technical Services</b>				<b>\$1,856.12</b>
<b>400 Purchased Property Services</b>				
420 Utility Services				26,725.67
430 Repairs and Maintenance Services				47,721.44
<b>Total Purchased Property Services</b>				<b>\$74,447.11</b>
<b>500 Other Purchased Services</b>				
530 Communications				1,221.24
550 Printing and Binding				6,827.59
580 Travel				2,656.48
<b>Total Other Purchased Services</b>				<b>\$10,705.31</b>
<b>600 Supplies</b>				
610 General Supplies				27,911.87
620 Energy				127,062.03
630 Food				1,993,134.55
<b>Total Supplies</b>				<b>\$2,148,108.45</b>
<b>700 Property</b>				
740 Depreciation				125,143.79
<b>Total Property</b>				<b>\$125,143.79</b>
<b>800 Other Objects</b>				
810 Dues and Fees				509.25
<b>Total Other Objects</b>				<b>\$509.25</b>
<b>Total 3100 Food Services</b>				<b>\$4,267,040.37</b>

	<u>Food Service(51)</u>	<u>Child Care Operations(52)</u>	<u>Other Enterprise(58)</u>	<u>Internal Service(60)</u>	<u>Total</u>
<b>3000 <u>Operation of Non-Instructional Services</u></b>					
3100 Food Services	4,267,040.37				4,267,040.37
<b>Total Operation of Non-Instructional Services</b>	<b>\$4,267,040.37</b>				<b>\$4,267,040.37</b>
<b>TOTAL ACTUAL EXPENDITURES &amp; OTHER FINANCING USES</b>	<b>\$4,267,040.37</b>				<b>\$4,267,040.37</b>

LEA : 104107903 Seneca Valley SD

Printed 11/18/2024 3:11:28 PM

Fund	School	School Number	Local Personnel	Local Nonpersonnel	State Personnel	State Nonpersonnel	Federal Personnel	Federal Nonpersonnel	Total	Explanation
10										
	Connoquenessing Valley El Sch	1178	7,933,106.87	1,465,161.43	2,725,042.55	503,286.71	163,933.46	10,493.51	12,801,024.53	
	Ehrman Crest El Sch	1180	7,732,327.22	1,536,843.45	2,656,074.23	527,909.66	172,688.25	11,053.92	12,636,896.73	
	Ehrman Crest MS	7488	6,458,752.42	1,293,705.11	2,218,598.02	444,391.02	140,295.52	8,980.43	10,564,722.52	
	Haine El Sch	4907	7,970,232.43	1,555,342.34	2,737,795.28	534,264.08	363,875.43	11,250.06	13,172,759.62	
	Haine MS	7489	5,821,440.63	1,027,091.87	1,999,679.78	352,808.69	221,472.85	7,439.33	9,429,933.15	
	Rowan El Sch	1179	5,765,042.24	1,003,502.04	1,980,306.79	344,705.52	110,310.37	7,061.06	9,210,928.02	
	Ryan Gloyer MS	5311	15,807,680.18	2,924,424.51	5,429,978.68	1,004,547.32	125,059.57	27,306.97	25,318,997.23	
	Seneca Valley HS	8318	28,237,878.07	6,193,533.06	9,699,783.53	2,127,494.49	223,317.68	56,947.43	46,538,954.26	
<b>Total</b>			<b>85,726,460.06</b>	<b>16,999,603.81</b>	<b>29,447,258.86</b>	<b>5,839,407.49</b>	<b>1,520,953.13</b>	<b>140,532.71</b>	<b>139,674,216.06</b>	