

New Elementary School on Greendale Road



➤ **Completed Work:**

- The site was covered in snow..
- Laying of interior CMU masonry has been suspended due to weather.
- Metal stud framing has started at the tops of the CMU walls in the classrooms. The Contractor is reminded the top of the CMU walls to be grouted prior to placing metal stud framing.
- MEP installation continues in the classroom.
- The retention pond is frozen over but appears to be operating properly.

➤ **Upcoming Work / Look Ahead:**

- Continue setting and filling the ICF forms.
- Continue placing concrete floor slabs.
- Continue laying of masonry in the kitchen area.

New Elementary School on Greendale Road



South Side of the Site and Building

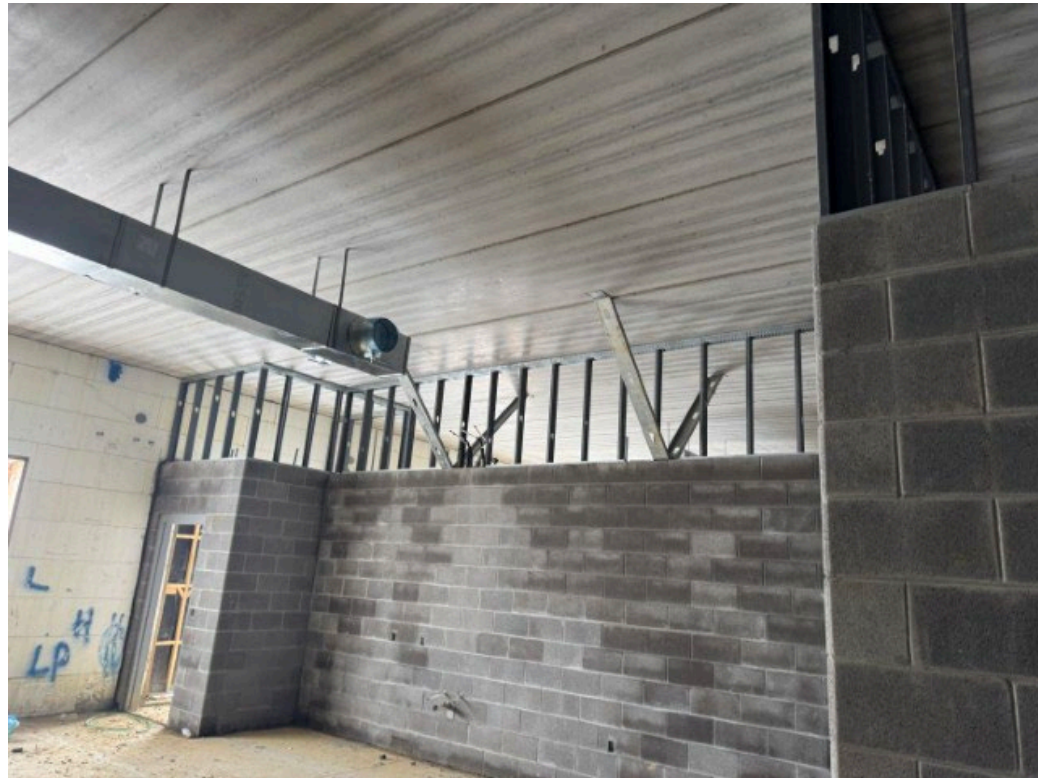


Week Ending February 27, 2026

New Elementary School on Greendale Road



Metal Stud Frame at the Top of the CMU wall

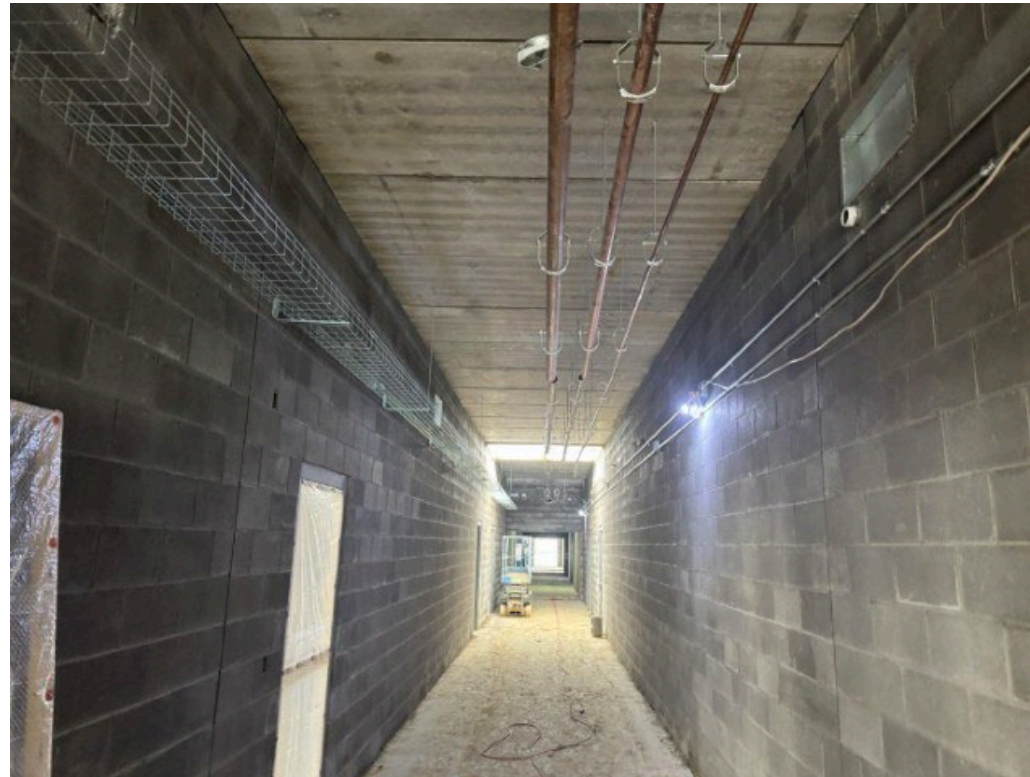


Week Ending February 27, 2026

New Elementary School on Greendale Road



Copper line and wire pathway Installation Continues at Corridor C01



Week Ending February 27, 2026

New Elementary School on Greendale Road



Installation of Ductwork at the First Floor Classrooms



Week Ending February 27, 2026

New Elementary School on Greendale Road



Upper Retention Pond



Week Ending February 27, 2026

New Elementary School on Greendale Road



Lower Retention Pond



Week Ending February 27, 2026