

HOME OF THE  
OREFIELD  
MIDDLE SCHOOL

*Jaguars*

***5th Grade Parent Information 2026***

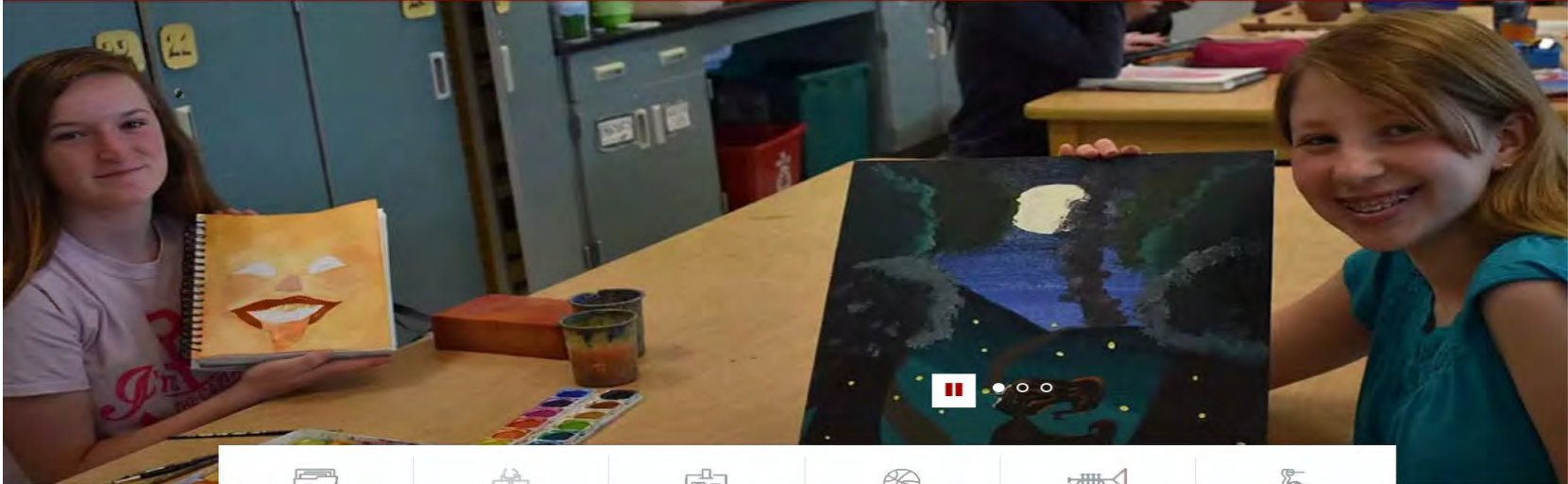
# Visit us at [Orefield Middle School Website](#)



**OREFIELD MIDDLE SCHOOL**  
*Educating for Success, Inspiring Excellence*

[District](#) [Select Your School](#) [Clever](#) [Intranet](#)   

[About](#) [Teams](#) [Announcements](#) [Students](#) [Parents](#) [Staff](#) [Directory](#)



[HAC](#)



[Jobs](#)



[Staff Directory](#)



[Athletics](#)



[Arts](#)



[Menus](#)

**OMS NEWS**

[VIEW ALL NEWS](#) →

# Stay connected with Parent Resources



**OREFIELD MIDDLE SCHOOL**

*Educating for Success, Inspiring Excellence*

🏠 District Select Your School ▾ Clever Intranet Tech Support Schoology 📺 🔄 🔍

[About](#)

[Teams](#)

[Announcements](#)

[Students](#)

[Parents](#)

[Staff](#)

[Directory](#)

[First Week of School Web Portal](#)

[Course Requests in Home Access Center](#)

[Middle School Links](#)

[PTO](#)

[PTO Directory](#)

[Parent Resources](#)

[Schoology Parent Portal](#)

[Student Wellness Form](#)

## PARENT RESOURCES

### Parent Resources

[CLEVER Portal login instructions](#) - for all applications related to curriculum, log into Clever

[Student Google Apps login instructions from home](#)

[Digital Learning Resources](#)

[SCHOOLGY Portal login instructions](#)

[Mind UP - For Parents](#)

[Volunteer Policy and Information](#)

### Home Access Center

- Home Access Center
- Parent Home Access Center Information
- For HAC support, contact: [hac@parklandsd.org](mailto:hac@parklandsd.org)

[Schoology Parent Portal](#)

### Manuals

- Elementary School Student Handbook
- Middle School Student Handbook
- High School Course Catalog
- High School Student Handbook

## Get Social by following us on:



[Orefield Middle School on Facebook](#)



[Orefield Middle School on Instagram](#)



[Orefield Middle School on X](#)



## *Parkland School District*

### Middle School Mission Statement



*Parkland School District's mission is to create a safe and secure environment that promotes social and academic growth for all learners. Parkland strives to empower each learner to be a meaningful contributor in a dynamic global society through the collaborative efforts of students, staff, parents and the Parkland Community.*

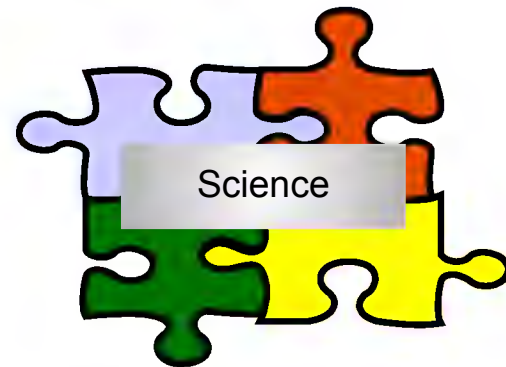
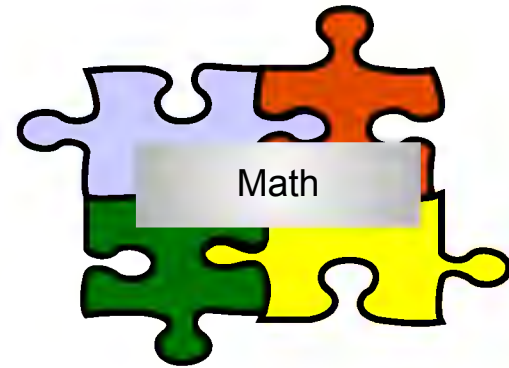


# Important Dates to Note

**Please make a note of the following dates to help your student transition to Orefield Middle School**

- ❖ 5<sup>th</sup> Grade Visitation with Orefield 6th Graders:
  - **May 11** (Schnecksville & Kratzer)
  - **May 19** (Kernsville & Ironton)
- ❖ New Student Orientation – August ?
- ❖ First Day of School – August ?

# ***4 Teacher Teams***



# Reading

## Type of Text

- Literature–Short Stories & Novels
- Informational–Non-Fiction Text

## PSSA Skill Review

- IXL
- Study Island

## Accelerated Reading Program (ARP)

# Language Arts

## Grammar

- Parts of Speech
- Parts of a Sentence
- Punctuation
- DLR–Daily Language Review
- DGP–Daily Grammar Practice

## Vocabulary

- Greek & Latin Roots

## Writing

- Paragraph Structure
- Text Dependent Analysis (TDA)

## PSSA Grammar Skill Review

- IXL
- Study Island

# Mathematics

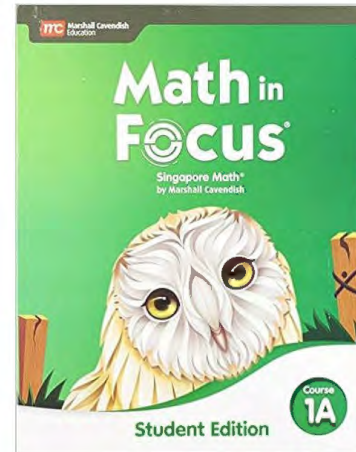
*Core Program aligned to PA State Standards*

*Consumable Resource: Math in Focus*

*Digital Resources: IXL & Study Island*

## Major Areas of Study:

- **The Number System**
- **Ratios and Proportional Relationships**
- **Expressions and Equations**
- **Geometry**
- **Statistics and Probability**



# Social Studies & Science

## Social Studies

- McGraw-Hill – Discovering Our Past – A History of the World
- Major Areas of Study:
  - Stone Ages
  - Fertile Crescent
  - Ancient Cultures
- Aligned with Pennsylvania Academic Standards

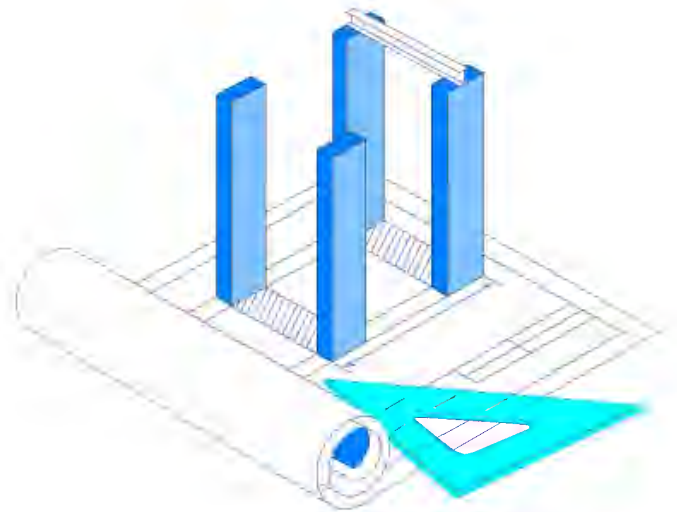
## Science

- SAVVAS – Elevate Earth Science
- Major Areas of Study:
  - Water and Natural Resources
  - Earth’s Atmosphere, Weather and Climate
  - Exploring Earth-Minerals/Rocks
  - Solar System
- Aligned with PA Standards for Science & Technology/Environment & Ecology



# 6th Grade Gifted Program

- Continuation of Parkland's Elementary Gifted Program
- Inquiry-based program that enriches the 6<sup>th</sup> grade regular education core curriculum



# MUSIC/PERFORMING ARTS



Fulfilling music elective requirement:

TWO BASIC CHOICES

Rotation of **GENERAL MUSIC**

—-or—-

Rotations of **PERFORMANCE ENSEMBLE(S)**

**Band, Orchestra, Chorus** (or any combination)



A detailed description of the middle school music program will be sent to each family along with an electronic course selection form.

This Information will be reviewed several times. Changes can be made at the beginning of the school year as well.



# MUSIC/PERFORMING ARTS NEXT STEPS

## Middle School Music And the selection process at OMS/SMS

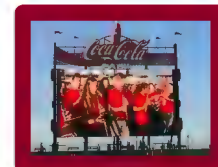


Presented by  
Mr. Jonita, OMS Chorus/General Music  
Ms. Steve, SMS Chorus/General Music  
Ms. Eudling, SMS Orchestra  
Mr. Steven, OMS Orchestra  
Mr. Brz, SMS Band  
Mr. Z. med, OMS Band



## Next Steps:

- Continue singing and playing instruments
- OMS Music Teachers will meet with students
- I will make announcements at both 5th Grade District Instrumental Concerts
- Reminders at 5th Grade Building Chorus Concerts
- An e-mail will be sent to every Parkland family where a student is going to 6th Grade
- A reminder will be sent 10-14 days as a reminder
- Students/Parents may contact any OMS music teacher at any time with questions!



## 2026-2027 6th Grade Music Course Selection OMS

Dear Parent(s)/Guardian(s) of a Future Middle School Musician:

The Parkland Middle Schools are excited to inform you of the many musical opportunities that are offered to your child. Students may participate in any one or a combination of the following Performing Music ensembles: Band, Chorus, and/or String Orchestra. Parkland School District allows students in performing ensembles to be exempt from General Music.

The Parkland Middle School Exploratory Subjects operate on a six (6) marking period schedule. Students choosing a Performing Music will meet daily as a class during marking periods two (2)\* and five (5). Both marking periods will coincide with the Winter (late Fall) and Spring concert. Students who select a Performing Music Ensemble must remain in the group(s) for both marking periods and attendance at BOTH concerts is MANDATORY to satisfy the music requirement. A limited number of after school rehearsals will be scheduled since the entire ensemble cannot meet together during the school day.

Beginning instrumental students (no previous experience) MUST contact the music department prior to signing up for a performance ensemble.

6th Grade is the perfect opportunity to continue playing an instrument and/or singing. Students who select General Music in lieu of performing will meet as a class for one (1) marking period. This is an academic class with homework, assignments, tests/quizzes and projects. All students will receive a letter grade on their report card regardless of the music option they choose.

# 6th Grade Exploratory Cycle

## Family & Consumer Sciences

### Nutrition and Food Unit (15 days)

- ★ Kitchen Safety
- ★ Kitchen Equipment
- ★ Measuring Ingredients, Abbreviations and Cooking Terms
- ★ How to Read a Recipe
- ★ Table Manners and Table Settings
- ★ The Dietary Guidelines and The New Pyramid
- ★ Approximately Four Food Labs

### Sewing Unit (13 days)

- ★ Sewing Equipment
- ★ Sewing Safety
- ★ Sewing Machine Parts
- ★ Mask Project
- ★ Hand-Sewing and Buttons
- ★ Machine Practice Papers

### Childcare Unit (2 Days)

- ★ Responsibilities
- ★ Child Development

# 6th Grade Exploratory Cycle Technology Education

## *Exploration into Multiple aspects of Technology and Engineering Design/Development/Solutions*

- Introduction to
  - Manufacturing/Material
  - Fabrication/Electronics
  - Engineering/Design (AutoCad)
- Focus on connections between Science, Technology, Engineering, Art, and Math, (STEAM)
- Main Concentration on development of problem solving skills along with hands on activities and projects.

# Art 6th Grade Exploratory Cycle

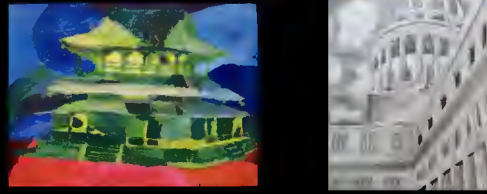
## Art History

Styles/Movements



## Perspective

### Architecture Lesson

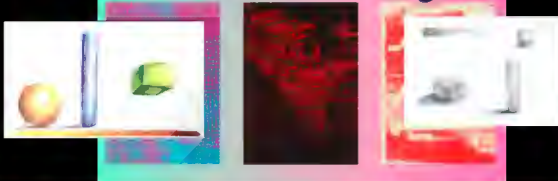


## Exploring Culture and Heritage



## ELEMENTS &

### PRINCIPLES OF Design



## ACRYLIC & WATERCOLOR

### PAINTING



## Abstract Art

### Drawing Lesson





# 6th Grade Exploratory Cycle Info Tech & Health/Phys Ed



## *Information Technology*

- Keyboarding
- Google Docs assignments
- Google Slides Assignments
- Google Drawings
- Coding using Code.org
- Everfi - Internet Safety /  
Financial Literacy
- Xello - Career Choices

## *Health/Physical Education*

- Health and Wellness Triangle
- Prevention of Disease
- Organization of Life
- Nervous and Immune Systems
- Substance Abuse and Prevention

# Time Schedule

Days of cycle: 1 2 3 4 5 6

6th Grade			
Period	Time	Time	Minutes
HR	7:45	7:50	5
JP	7:53	8:29	36
1	8:32	9:17	45
2	9:20	10:05	45
3	10:08	10:53	45
4	10:56	11:41	45
Lunch	11:44	12:14	30
5	12:17	1:02	45
6	1:05	1:50	45
7	1:53	2:38	45

# Sample 6th Grade Student Schedule

PD.	Day 1	Day 2	Day 3	Day 4	Day 5	Day 6
1	PE/HEALTH	INFORMATION TECHNOLOGY	PE/HEALTH	INFORMATION TECHNOLOGY	PE/HEALTH	INFORMATION TECHNOLOGY
2	Math	Math	Math	Math	Math	Math
3	Science	Science	Science	Science	Science	Science
4	Language Arts	Language Arts	Language Arts	Language Arts	Language Arts	Language Arts
Lunch	Lunch	Lunch	Lunch	Lunch	Lunch	Lunch
5	EXPLORATORY CYCLE	EXPLORATORY CYCLE	EXPLORATORY CYCLE	EXPLORATORY CYCLE	EXPLORATORY CYCLE	EXPLORATORY CYCLE
6	Reading	Reading	Reading	Reading	Reading	Reading
7	Math Extension & Social Studies	Math Extension & Social Studies	Math Extension & Social Studies	Math Extension & Social Studies	Math Extension & Social Studies	Math Extension & Social Studies

- *Exploratory Cycle included : Art, Technology Education, Family & Consumer Science, General Music and/or Band,Chorus,Orchestra ]*

# Student Support Services

## 1. Counselors

- a. Meet with students individually and/or small groups

## 2. D.R.P.

- a. District Remediation Program

## 3. T.O.P.S.

- a. Ttutoring Orefield by Parkland Students

## 4. S.A.P.

- a. Student Assistance Program

# Co-Curricular Activities

- **Academic**
  - ARP Reading Program
  - Spelling Bee
- **Literary/Communication**
  - Newspaper - Orefield Oracle
  - TV Studio - OMS Live
- **Theatre Arts**
  - Fall Play
  - Spring Musical
  - Stage Crew
- **Social Opportunities**
  - Clubs
  - Dances
  - Field Day

# 6th Grade Health Requirements

- 6th grade screenings: Height, Weight, Body Mass Index (BMI) & Vision (every year in middle school)
- Physical – Each 6<sup>th</sup> grade student is required to have a physical/well child exam
- Medication Policy
- 7th grade requirements: dental exam and mandated screenings include hearing and scoliosis screenings
- State Immunization Requirements (due 1st day of 7th grade):
  - Tdap- tetanus, diphtheria, acellular pertussis
  - MCV –meningitis

## OMS PTO

- *We work to support the OMS Teachers and Staff to better our students learning environment through volunteerism, fundraising, fun events, reading and leadership!*
- *Be sure to listen for future communications about getting involved.*

***Thank you for your time.***

***Any questions, please do not hesitate to reach out to us.***

## **Orefield Middle School**

### **Administration:**

- Dr. Monica Ouly-Uhl - Principal
- Mrs. Tammy Bennick - Asst. Principal
- Mr. Thomas Stoudt - Asst. Principal

### **Guidance Counselors:**

- Mrs. Lynda Strohl
- Ms. Elaine Letoski
- Mr. Sean Stackhouse

### **Nurse:**

- Mrs. Jeanmarie Evans

