

FRANKLIN PIERCE SCHOOLS

2026-2027

HIGH SCHOOL COURSE CATALOG



FRANKLIN PIERCE HIGH SCHOOL
GATES HIGH SCHOOL
WASHINGTON HIGH SCHOOL

FRANKLIN
PIERCE
SCHOOLS

TABLE OF CONTENTS

<u>Franklin Pierce Schools Vision, Mission, & Graduate Profile</u>	2
<u>Graduation Requirements</u>	3
<u>Dual Credit Options</u>	6
<u>General Information: Course Taking Policies, Procedures and Opportunities</u>	8
<u>Four-Year Planning Sheet</u>	11
<u>Courses at a Glance</u>	13
<u>Course Descriptions</u>	
<u>Arts (Theatre, Music, Technical & Visual Arts)</u>	23
<u>Career and Technical Education (CTE)</u>	32
<u>Dual Language</u>	44
<u>English Language Arts</u>	45
<u>English Language Development</u>	49
<u>Health & Physical Education</u>	50
<u>Mathematics</u>	53
<u>Science</u>	59
<u>Social Studies</u>	64
<u>Special Education</u>	70
<u>World Language</u>	73
<u>Additional Elective Classes</u>	76
<u>Pierce County Skills Center</u>	78
<u>Counseling and Career Services</u>	83
<u>GATES High School</u>	84

FRANKLIN PIERCE SCHOOLS

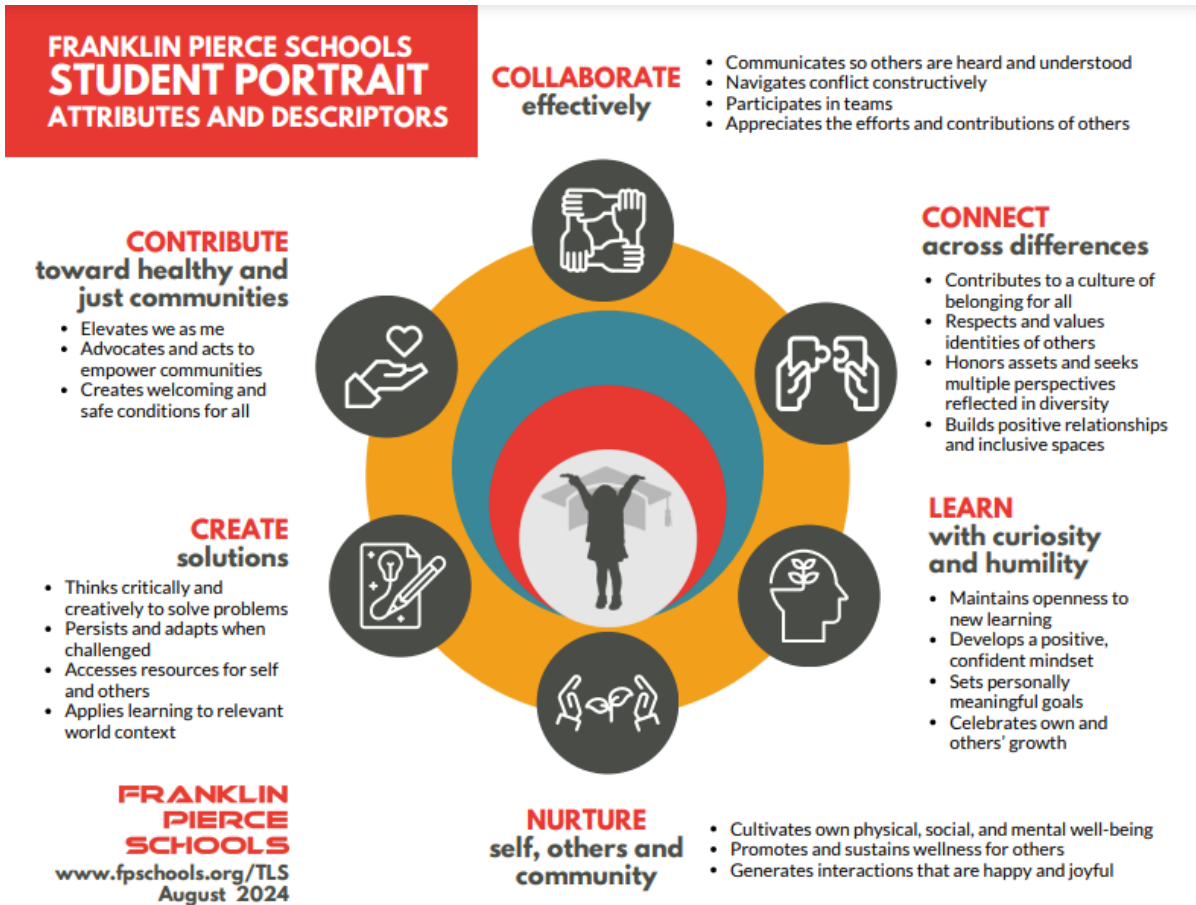
The purpose of this Course Catalog is to guide students, families, and the Franklin Pierce Schools community to make decisions that will drive our vision that every student thrives on the path to graduation and beyond. This guide provides information on *the what* (requirements), *the how* (courses) and *the why* (skills for life, college, and career) of the high school experience. The Franklin Pierce Schools community celebrates working in partnership to co-create a just, healthy, and sustainable future together.

The Course Catalog includes courses offerings at our comprehensive high schools for the 2024 – 2025 registration process. From these offerings, students will indicate their preferences. Actual school and student schedules will be based on student interests and staff availability. GATES High School provides a limited range of course offerings in a unique schedule and quarterly structure. Go to the [GATES High School](#) section of the Course Catalog to learn more.

Vision

Every student thrives on the path to graduation and beyond.

The Franklin Pierce Schools’ high school program of study is designed to ensure students graduate ready to grow and contribute in their communities, postsecondary education settings, and careers. The FPS Student Portrait is an articulation of six actions we want to cultivate in students all along their path in our schools. The components of our Graduation Requirements – courses, a graduation pathway reflecting college and career readiness, and a high school and beyond plan – support students in developing these actions.



GRADUATION REQUIREMENTS

In accordance with Franklin Pierce Schools Board Policy #2410, students must have completed all requirements for graduation prior to receiving a diploma and participating in the graduation ceremony.

1 HIGH SCHOOL & BEYOND PLAN

The High School and Beyond Plan (HSBP) is a Graduation Requirement that every FPS student uses to plan for post-high school education or training. Following a career and skills inventory in grade 7, each student begins their own personalized plan in grade 8, then works with school staff and their family to revise throughout high school. The result is a plan that promotes student success and well-being while establishing a next step after graduation.

Students in Franklin Pierce Schools must successfully complete and share their plans to meet the Graduation Requirement. During 9-12 advisory, students research, develop, and modify their plans as they identify options for employment, enlistment, and enrollment after graduation. Advisory activities at each grade level support this process. Students share the development of the plan with their family at annual student-led conferences.

2 HIGH SCHOOL COURSE CREDITS

With a transition from an eight-period day to a six-period day in the 2024-2025 year, each semester a student can earn three credits, with six total credits per year possible.

Graduates are required to earn a total of 24 credits.

Subject-specific and elective requirements are specified in this Catalog.

Counselors regularly monitor students' progress toward graduation goals and requirements. Teachers and other support staff provide help so all students stay on track to graduate.

3 GRADUATION PATHWAYS

High school students must fulfill a graduation pathway which aligns with their HSBP. Graduation pathways are met by course, performance, or exam-based options.

All high school students take state tests that are aligned to our learning standards in English language arts, math, and science for federal accountability. Passing the English and math tests is an example of an exam-based graduation pathway.

In addition to passing state tests, there are other graduation pathway options for students to meet this state requirement. Students demonstrate their readiness to enter a postsecondary career or attend college by completing any one of the graduation pathways outlined on following pages. Options include academic coursework and testing options, a Career/Technical education sequence, a performance-based learning experience, and a qualifying military career interest score.

For information about state testing and high school Graduation Requirements, visit <https://www.k12.wa.us/student-success/graduation/graduation-requirements>.

HIGH SCHOOL COURSE CREDIT REQUIREMENTS

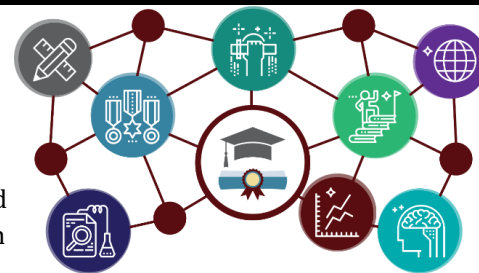
<u>English</u>	4.0	
<u>Math</u>	3.0	<p>Algebra I Geometry 1-2 Algebra II or Modern Algebra II *</p> <p>*Algebra II/Modern Algebra II may be met by another third-year math course chosen by the student based on interest and their High School and Beyond Plan (HSBP). See counselor for details. Algebra II/Modern Algebra II, as well as a senior year math-based quantitative course, is a requirement for admission to Washington public four-year baccalaureate institutions, as well as many other universities.</p>
<u>Science</u>	3.0	<p>At least two credits of lab science are required. The third credit should be chosen by the student based on interest and their High School and Beyond Plan (HSBP). The recommended sequence is Biology – Physical Science – Chemistry.</p>
<u>Social Studies</u> **	3.0	<p>0.5 World History 0.5 Social Studies Elective 1.0 US History 0.5 Civics 0.5 Contemporary World Problems (CWP) or Ethnic Studies</p> <p>**Washington State History is required for graduation. FPS students typically fulfill this state requirement in Grade 7. Transfer students may need to complete this requirement prior to graduation. See counselor for details.</p>
<u>Arts</u>	2.0	<p>1 credit may be earned in a Personalized Pathway.***</p>
<u>World Language</u>	2.0	<p>Two consecutive years in the same language. Both credits may be earned in a Personalized Pathway.***</p>
<u>Health & Fitness</u>	2.0	<p>1.5 Physical Education (Intro to PE required.) .5 Health</p>
<u>Career & Technical Ed</u>	1.0	
Electives	4.0	

*** “Personalized pathway” means coursework identified in a student’s High School and Beyond Plan that is deemed necessary to attain the postsecondary career or educational goals chosen by the student.

GRADUATION PATHWAYS

Students meet one or more pathway options or any combination of at least one English language arts option and one mathematics option.

Career/Technical Field CTE Course Sequence: Complete 2.0 or more credits in a CTE course progression within the same Program Area or a Localized Pathway tailored to the student's goals and relevant to the postsecondary pathway(s) outlined in the student's High School and Beyond Plan. Must include Dual Credit (DC) or an Industry Recognized Credential (IRC), including Core Plus. Running Start CTE (Voc) courses in the same program (sequence) may count toward Career and Technical Education (CTE) Sequence Graduation Pathway.



ASVAB Exam for Military Career Interest:

Meet standard on the ASVAB (Armed Services Vocational Aptitude Battery) by scoring at least the minimum score on the Armed Forces Qualification Test (AFQT) established by the military for eligibility to serve in a branch of the armed services. The score requirement is posted annually by the State Board of Education (www.sbe.wa.gov/our-work/graduation-pathway-options/asvab). Students are not required to enlist, meet physical or other military enlistment requirements, or release score or personal information to the military.

Postsecondary Education English Language Arts (ELA) and Math Courses & Exams:

College admissions tests (ACT/SAT):

Meet or exceed the scores set by the State Board of Education in the ELA and Math sections of the ACT (ELA = 14; math = 16) or SAT (ELA = 410; math = 430).

Dual credit courses:

Earn at least 1.0 credit in College in the High School or Running Start dual credit courses. Or pass a state-approved Advanced Placement (AP) course with a C+ or better each semester.

Dual credit exams:

Earn a 3 or higher on state-designated Advanced Placement (AP) exams.

State assessments:

Meet or exceed the graduation scores on the Smarter Balanced Assessments (SBA) in English language arts (ELA) and mathematics or on the WA-AIM (Washington Access to Instruction & Measurement).

Transition courses:

Earn credits in high school Bridge to College English and math courses that, based on their final grade, allow students to place directly into credit-bearing college level courses (courses with college course numbers of 100 or above).

Specific course and test score requirements are updated at the Office of the Superintendent of Public Instruction: <https://www.k12.wa.us/student-success/graduation/graduation-requirements/graduation-pathways>.

Performance-based Learning Experience

Complete a performance-based learning project demonstrating knowledge and skills in a real-world context that provides evidence of meeting or exceeding the state learning standards in ELA and mathematics.

DUAL CREDIT OPTIONS

Dual Credit provides students with the potential to earn high school and college credit at the same time. Why dual credit? In today's world, two-thirds of all jobs require some post-high school training or education. Taking dual credit is connected to higher high school graduation rates, college enrollment, and degree completion.

Dual credit options in Franklin Pierce Schools (FPS) are listed below. The features of each dual credit option vary. Some are taught on the high school campus while others require students to travel to a postsecondary campus. Some require passing an exam to earn credit while in others credit is based on satisfactory course completion. Where students have specific postsecondary plans in mind, they should consult the requirements of relevant universities or career programs to select the best dual credit option.

Dual Credit (DC) options by course are noted in the Courses At a Glance table and in Course Descriptions in this guide.

Advanced Placement (AP)

AP courses are taught by trained FPS teachers at FPS high schools. Students earn regular high school credit upon successful completion of the course and may gain college credit if they earn a qualifying score on the corresponding AP exam. University credit is generally granted for test scores of 3 and above on a five-point scale, however, each university has their own standards for accepting credit for AP exams. For more information on the AP program, go to www.collegeboard.com/ap. Students enrolling in three or more concurrent AP classes must have prior approval from their counselor. Students who enroll in year-long AP courses are expected to remain in those courses for the entire year.

College in the High School (CiHS)

In association with Washington universities, high school students may earn college credit for completing CiHS classes on the high school campus where trained and approved FPS teachers serve as adjunct faculty for our partner universities. Enrolled CiHS students also have access to support services at participating universities. Students successfully completing a CiHS course may earn both high school *and* college credit.

Credit is determined through students' work throughout the class and not on a single test score. In some CiHS courses, each semester is equivalent to a college course, while in others students have the extended opportunity of the entire high school year to complete one college course. (See course descriptions for more information.) College credit earned may count as elective or academic credit depending on the receiving college's transfer credit policies. See course options in the subject areas for potential offerings for the coming year.

There are no fees for students to enroll in a CiHS dual credit course.

Courses typically run five credits, although course credits are noted within each course description. Students should note that enrolling for the college credit automatically starts an official college transcript with the institution offering the course that will include the student's grade.

CTE Dual Credit

Dual credit courses offer students an opportunity to earn Community/Technical College credit while attending high school classes. CTE Dual Credit classes are taught at the high school or Puget Sound Skills Center and integrate academics with technical skills to help prepare students for advanced education and careers related to professional-technical occupations. High school students who complete selected high school courses with a grade of 'C' (2.0) or better can earn Community/Technical College credit. After June 30th of the summer after completing required high school courses, students may contact the PC3 office at 253-583-8803 for transcription of CTE Dual credits. More information about CTE Dual Credit can be found online at Pierce County Careers Connection at [Pierce County Careers Connection \(www.pc3dualcredit.org\)](http://www.pc3dualcredit.org) or Washington State Board for Community and Technical Colleges at www.sbctc.edu/colleges-staff/programs-services/cte-dual-credit.

Running Start

Running Start is a program that allows eligible 11th and 12th grade students to take college courses for all or part of their schedule at the 34 community or technical colleges in the state of Washington. Running Start students earn college credit which is also converted and applied to their high school transcript. Generally, FPSD students access Running Start at Pierce College, Tacoma Community College, Clover Park Technical College, or Bates Technical College. Running Start students and their families do not pay college tuition; they are responsible for mandatory fees, books, and transportation to/from the college campus.

Courses can be taken during fall, winter, spring and summer quarters. Students are permitted to enroll in a combined annual average of 14 full-time equivalent (FTE) between high school and college. It is not usually advisable for students to try to transfer to the Running Start Program during the middle of the school year, as the community/technical colleges are on a three-quarter system that does not match starting times with our semesters. **Students planning to take Running Start courses during fall quarter should have the application process completed by the end of the school year prior to starting.**

GENERAL INFORMATION

Class Schedule

To take full advantage of educational offerings in preparation for success beyond graduation and to meet Graduation Requirements, students are expected to enroll in six (6) classes per semester. Early release or late arrival requests by a parent or guardian may be granted for students in grades 11 and 12 with the approval of a school counselor. All students are also assigned to an advisory period. Students who are participating in athletics may not have an early dismissal during the sports season.

Academic Acceleration

Engagement in rigorous coursework prepares students best for success in postsecondary education and/or employment after high school. To enable student participation in rigorous classes, the district will automatically consider for enrollment those students who meet state standards on the high school statewide student assessment in the next most rigorous level of advanced courses offered by the high school. (Policy 2195)

Schedule Changes

Students must submit a written schedule change request to their counselor by email or by completing a schedule change form. Class requests should be consistent with High School and Beyond Plans, credit requirements, and graduation pathway options. Students should confirm timelines and processes for this at their school.

Advisory & Navigation

Within an advisory period, students meet with a teacher for social emotional learning, academic support, and postsecondary planning – Connections at Franklin Pierce HS, Check & Connect at GATES HS, and Home Room at Washington HS. Within advisory time, students develop, monitor, and adjust their High School and Beyond Plans (HSBPs). Based on their goals and interests, students are encouraged to explore related options for enrollment, employment, and enlistment (three Es) following high school. Navigation also supports students' preparation for student-led conferences and senior culminating activities. Students can earn credits annually upon successful completion of grade-level requirements. Advisory is a Pass/No Credit class.

High School and Beyond Plan (HSBP) and SchoolLinks

The High School and Beyond Plan (HSBP) is a Graduation Requirement that every FPS student uses to plan for post-high school education or training. Following a career and skills inventory in grade 7, each student begins their own personalized plan in grade 8, then works with school staff and their family to revise throughout high school. The result is a plan that promotes student success and well-being while establishing a next step after graduation. SchoolLinks is the online platform used to facilitate the HSBP. Franklin Pierce Schools (FPS) is excited to introduce Washington's new High School and Beyond Plan (HSBP) career and college readiness platform, powered by [SchoolLinks!](#) (August 2025 for middle school and August 2026 for high school). This is part of a [OSPI HSBP](#) statewide rollout of the platform to align and provide equitable college and career planning for all students. For more information go to the [FPS Website \(fps.org\)](#) and search for the HSBP.

Career & Technical Education (CTE)

Career and Technical Education (CTE) programs enable students to explore career pathways based on their interests. A CTE Graduation Pathway is a sequence of CTE courses in a focused Program Area or a Localized Pathway that combines two or more Program Areas. Many CTE classes are dual credit courses where students may earn both high school and college credits. Some CTE courses are equivalencies and may also satisfy Graduation Requirements in various content areas. Some courses have Industry Recognized Credentials (IRCs) to provide career preparation. See course descriptions for more information.

College Admissions (WA)

For more information on admission requirements for Washington’s 34 community and technical colleges and four-year baccalaureate colleges in Washington, consult <https://wsac.wa.gov/college-admissions>.

Generally, Washington’s public four-year colleges require a 2.0 grade point average and successful completion of the following coursework: 4 credits of English; 3 credits of math including Algebra II/Modern Algebra II; a senior year quantitative math course; 3 credits of social studies; 2 credits of science; 2 credits of world language; and 1 credit in arts. All of Washington’s public four-year colleges are permanently test-optional, so the ACT or SAT are not required. All of Washington’s private, not-for-profit four-year colleges offer test-optional pathways.

Washington’s public two-year community and technical colleges are open access, so anyone with a high school diploma or GED can apply and attend; test scores and GPAs are not considered. (Note: Meeting minimum college entrance requirements does not guarantee admission.)

Several colleges/universities in Washington offer specific programs for students with intellectual disabilities. Students and families are encouraged to check out programs at Bellevue College ([Occupational & Life Skills](#)), Highline College ([Achieve](#)), Seattle Central College ([Mainstay/SAILS](#)), Skagit Valley College ([INVEST](#)), and Washington State University ([ROAR](#)).

College Guaranteed Admissions for FPS Students

Franklin Pierce partners with several Washington four-year universities to support guaranteed admissions for eligible students (WAGAP – Washington Guaranteed Admissions Program). WAGAP schools include Central Washington University (CWU), Eastern Washington University (EWU), The Evergreen State College, Washington State University (WSU), University of Washington, Tacoma (UWT), and Western Washington University (WWU). Learn more at <https://councilofpresidents.org/admissions/guaranteed-admissions-program-gap/>

Under a separate but similar agreement, direct admissions options are available to FPS students at Pacific Lutheran University (PLU) and Saint Martin’s University. FPS is proud to offer these options for students to more smoothly access postsecondary education to support their college and career goals.

Grading

Franklin Pierce Schools utilize standards-based grading, wherein students’ proficiency is assessed and reported for course-specific standards. In course assessments, students receive scores of: 1=Below Basic, 2=Basic, 3=Proficient, 4=Advanced. These scores are translated to a letter grade as required for the state high school transcript. Grading scales and the associated grade point average for letter grades are available online, [2420P Procedure – Grading and Progress Reports](#).

“NC” Grades (No Credit): Students who receive a NC grade the end of a semester may participate in an extended semester opportunity under the direction of their teacher to earn credit for the course. A NC grade may be changed to a letter grade within five weeks after the close of a semester when proficiency is demonstrated on course standards at a grade of C- or higher. NC grades will revert to “F” after that time. A building administrator must approve all other grade changes.

Athletic Eligibility: A student must have passed five academic courses out of a six-period day the previous term and be passing five academic courses during the sports season to be eligible to participate in athletics. (For the spring 2024 term, a student must have passed seven of eight classes.) Refer to the [WIAA athletic code](#) for additional athletic eligibility requirements.

High School Credit Retrieval

Students with credit or course deficiencies are required to make up the credit to meet Graduation Requirements. Credit recovery courses, summer school, and remote course options may be available. Students with credit deficiencies should see their counselor for pre-approval and additional information.

Home School Courses

Any credit received for work outside of the regular school program requires the superintendent of the school district (or designee) to approve the course work. Home-schooled students are encouraged to participate in activities and athletics in Franklin Pierce Schools. Students may see a high school counselor for more information.

National Collegiate Athletic Association (NCAA)

College-bound student-athletes enrolling at a Division I or II school must meet specified academic requirements to practice, compete, and receive an athletics scholarship. These include course, GPA, and SAT/ACT testing requirements. In planning their high school classes, student-athletes should consult with your school counselor and visit <https://www.ncaa.org/student-athletes/future>.

Pierce County Skills Center (PCSC)

The Pierce County Skills Center serves high school juniors and seniors under the age of 21 from ten school districts in this area. PCSC focuses on hands-on learning and offers a variety of courses to choose from. PCSC students earn high school and even college credit in selected areas. Franklin Pierce students attend mornings or afternoons, depending on program selection. To participate in PCSC, students must be on track with Graduation Requirements and should have good attendance (95% or higher). A list of course descriptions can be found in course descriptions. For more information, students may see their counselor or go to www.pcskillscenter.org.

Maritime|253 Skills Center

[Maritime|253](http://www.maritime253.org) is a regional Career and Technical Education (CTE) center where students will take advanced, industry-focused courses alongside their required high school classes. Courses are geared toward students in grades 11 and 12. Whether heading straight into the workforce, pursuing apprenticeships, or continuing to two- and four-year colleges, Maritime|253 equips students with the skills, training and knowledge to succeed in the maritime industry. To participate in PCSC, students must be on track with Graduation Requirements and should have good attendance (95% or higher). A list of course descriptions can be found in course descriptions. For more information, students may see their counselor or go to www.maritime253.tacomashools.org.

The Seal of Biliteracy

The Washington State Seal of Biliteracy recognizes public high school graduates who have attained a high level of proficiency in speaking, reading, and writing in one or more world languages in addition to English. Graduating seniors earn this distinction by meeting all ELA Graduation Requirements and demonstrating proficiency in another world language either by earning four credits through proficiency testing or earning a score of three or higher on an AP World Language exam. Where students are eligible for the Seal, a notation is made on the student's high school diploma and high school transcript indicating that the student has earned the distinction.

FOUR YEAR PLANNING SHEET

Graduation Credit Requirements:

Credits	Content Area
4.0	English
3.0	Math
3.0	Science
3.0	Social Studies
2.0	Arts (or 1 Art & 1 Personal Pathway)
2.0	World Language or Personal Pathway
1.5	Physical Education (PE)
0.5	Health
1.0	Career and Technical Education (CTE)
4.0	Elective credits (Class of 2025 and beyond)
24.0	Class of 2025 and beyond Total Credits

The Graduation Requirements reflect a minimum standard for high school completion. Students are encouraged to persist in core classes throughout their high school program.

Four-year college admission requires two years of World Language and a senior year quantitative math course.

CTE courses may satisfy two Graduation Requirements while earning one credit for a single course. (See course descriptions.)

Freshman Year

First Semester	Second Semester
English Language Arts:	English Language Arts:
Mathematics:	Mathematics:
Science:	Science:
Health or Intro to PE:	Health or Intro to PE:
Personalized Pathway Elective:	Personalized Pathway Elective:
Elective:	Elective:

Sophomore Year

First Semester	Second Semester
English Language Arts:	English Language Arts:
Social Studies (World History or Elective):	Social Studies (World History or Elective)
Mathematics:	Mathematics:
Science:	Science:
Personalized Pathway Elective:	Personalized Pathway Elective:
Elective (World Language):	Elective (World Language):

Junior Year

First Semester	Second Semester
English Language Arts:	English Language Arts:
Social Studies (US History):	Social Studies (US History):
Mathematics:	Mathematics:
Science:	Science:
Personalized Pathway Elective:	Personalized Pathway Elective:
Elective (World Language):	Elective (World Language):

Senior Year

First Semester	Second Semester
English Language Arts:	English Language Arts:
Social Studies (Civics):	Social Studies (CWP or Ethnic Studies):
Elective (Mathematics):	Elective (Mathematics):
Elective (Science):	Elective (Science):
Personalized Pathway Elective:	Personalized Pathway Elective:
Elective:	Elective:

COURSES AT A GLANCE 2026-2027

The course table summarizes offerings at Franklin Pierce and Washington High Schools for the 2024-2025 school year. Students and families should consult Course Descriptions for more information about each course including prerequisites. A two-number series after a course title denotes a yearlong course. Otherwise, courses are one semester unless otherwise noted. *Dual Credit courses are designated DC; Courses that offer an Industry Recognized Credential are starred **

Graduation Requirements reflect a minimum standard for high school completion. Students are encouraged to persist in core classes throughout their high school program. When all required courses in a subject area are completed, additional courses in that subject count as elective credits.

COURSE	SCHOOLS	GRADUATION REQUIREMENT	GRADE LEVEL	SEMESTER 1 COURSE NO.	SEMESTER 2 COURSE NO.
Arts					
AFJROTC Drill and Ceremonies	WHS	Arts/CTE/PE	9 - 12	FLT611	
AP Art and Design 1,2 (DC Exam)	FPHS WHS	Arts/CTE	10 - 12	FNA131	FNA132
Chamber Choir 1, 2	FPHS WHS	Arts	10 - 12	FNA327	FNA328
Choir Beginning Treble 1, 2	FPHS	Arts	9 - 12	FNA305	FNA306
Choir Tenor Bass 1, 2	FPHS	Arts	9 - 12	FNA301	FNA302
Choir Intermediate Treble 1, 2	FPHS	Arts	9 - 12	FNA313	FNA314
Concert Choir 1, 2	FPHS WHS	Arts	9 - 12	FNA315	FNA316
Community Art	FPHS WHS	Arts/CTE	10 - 12	FNA133	
Concert Band 1, 2	FPHS WHS	Arts	9 - 12	FNA411	FNA412
Digital Photography Beginning (DC)	FPHS WHS	Arts/CTE	9 - 12	ATC301	
Digital Photography Advanced (DC)	FPHS WHS	Arts/CTE	9 - 12	ATC302	
Drama	FPHS WHS	Arts	9 - 12	FNA211	
Drama Advanced 1, 2	WHS	Arts	10 - 12	FNA213	FNA214
Drumline Beginning 1, 2	WHS	Arts	9 - 12	FNA421	FNA422
Drumline Advanced 1, 2	FPHS WHS	Arts	9 - 12	FNA437	FNA438
Glass Art Beginning	FPHS	Arts/CTE	9 - 12	FNA113	
Glass Art Advanced	FPHS	Arts/CTE	9 - 12	FNA114	
Graphic Design (DC)	FPHS WHS	Arts/CTE	9 - 12	ATC321	
Guitar Beginning	FPHS	Arts	9 - 12	FNA615	
History of Classical Music	WHS	Arts	9 - 12	FNA575	

History of Rock & Roll	FPHS WHS	Arts	9 – 12	FNA571	
Instrumental Jazz Ensemble 1, 2	FPHS WHS	Arts	9 – 12	FNA419	FNA420
Keyboarding Beginning	WHS	Arts	9 – 12	FNA601	
Keyboarding Advanced	WHS	Arts	9 – 12	FNA602	
Pottery Beginning	FPHS WHS	Arts/CTE	9 – 12	FNA117	
Pottery Advanced	FPHS WHS	Arts/CTE	9 – 12	FNA118	
Steel Drums Ensemble Beg. 1, 2	WHS	Arts	9 – 12	FNA611	FNA612
Steel Drums Advanced 1, 2	WHS	Arts	10 – 12	FNA621	FNA622
Symphonic Band 1, 2	FPHS	Arts	9 – 12	FNA413	FNA414
Technology Exploration 1, 2 (DC)	FPHS WHS	Arts/CTE	9 – 12	ATC311	ATC312
Ukulele Beginning	WHS	Arts	9 – 12	FNA617	
Ukulele Advanced	WHS	Arts	9 – 12	FNA618	
Unified Arts	WHS	Arts/CTE	10 – 12	FNA100	
Video Editing 1, 2 (DC)	FPHS WHS	Arts/CTE	9 – 12	ATC211	ATC212
Video Production 1, 2 (DC)	FPHS WHS	Arts/CTE	10 – 12	ATC221	ATC222
Visual Art & Design (DC)	FPHS WHS	Arts/CTE	9 – 12	FNA111	
Wind Ensemble 1, 2	FPHS WHS	Arts	9 – 12	FNA415	FNA416
Yearbook 1, 2 (DC)	FPHS WHS	Arts/CTE	10 – 12	ATC401	ATC402
CTE-Agricultural Education					
Eco System Design 1, 2 (2 period block class) (DC)	FPHS WHS	Science (1) CTE (1)	9 – 12	SCI621	SCI622
Food Justice in Action 1, 2 (2 period block class) (DC)	FPHS WHS	CTE/Science (1) English (1)	10 – 12	SCI651	SCI652
CTE-Business and Marketing					
AP Computer Science 1, 2 (DC Exam)	FPHS WHS	Math (3rd Year)/ CTE	10 – 12	TEC231	TEC232
Business Management (DC)	FPHS WHS	CTE	9 – 12	BUS111	
Entrepreneurship (DC)	FPHS WHS	CTE	10 – 12	BUS112	
Financial Literacy 1, 2 (DC)	FPHS WHS	Math (3rd Year)/ CTE	11 – 12	BUS211	BUS212
Intro to Computer Science 1, 2 (DC)	FPHS WHS	Math (3rd Year)/ CTE	9 – 12	TEC113	TEC114
Marketing (DC)	FPHS WHS	CTE	9 – 12	BUS115	
Retail Operations 1, 2 (DC) *	FPHS	CTE	11 – 12	BUS220	BUS221
Technology Exploration 1, 2 (DC)	FPHS WHS	Art/CTE	9 – 12	ATC311	ATC312

Yearbook 1, 2 (DC)	FPHS WHS	Art/CTE	10 – 12	ATC401	ATC402
CTE-Community Health					
American Sign Language 1, 2 (DC)	FPHS WHS	World Language/CTE	9 – 12	WRL111	WRL112
American Sign Language 3, 4 (DC)	FPHS WHS	World Language/CTE	10 – 12	WRL113	WRL114
American Sign Language 5, 6	WHS	World Language/CTE	11 – 12	WRL115	WRL116
Careers in Education 1, 2 (DC) *	FPHS WHS	CTE	10 – 12	CIE311	CIE312
Child Development (DC) *	FPHS WHS	CTE	9 – 12	FCS213	
Culinary Arts Beginning (DC) *	FPHS WHS	CTE	9 – 12	FCS111	
Culinary Arts Advanced (DC) *	FPHS WHS	CTE	9 – 12	FCS113	
Family Health *	FPHS WHS	Health/CTE	9 – 12	HPE111	
Independent Living (DC)	WHS	CTE	10 – 12	FCS311	
Intro Restorative Justice Center & Student Advocacy (DC)	WHS	CTE	9 – 11	CIE200	
Working with Children (DC) *	FPHS WHS	CTE	9 – 12	FCS214	
CTE-Health Sciences					
Biomedical Innovation 1, 2 (DC)	FPHS WHS	Science/CTE	12	SCI415	SCI416
Fitness Specialist 1, 2 (DC) *	FPHS	PE/CTE	11 – 12	HPE211	HPE212
Human Body Systems 1, 2 (DC)	FPHS WHS	Science/CTE	10 – 12	SCI215	SCI216
Medical Interventions 1, 2 (DC)	FPHS WHS	Science/CTE	11 – 12	SCI315	SCI316
Principles of Biomedical Science 1, 2 (DC)	FPHS WHS	Science/Health/ CTE	9 – 12	SCI115	SCI116
Sports Medicine Beginning 1, 2 (DC) *	FPHS	CTE	10 – 12	MDC111	MDC112
Sports Medicine Advanced 3, 4 (DC) *	FPHS	CTE	11 – 12	MDC121	MDC122
CTE-Manufacturing and Design					
Aerospace Manufacturing 1, 2 *	FPHS WHS	Math (3rd Year)/ CTE	10 – 12	TEC213	TEC214
Aerospace Manufacturing Adv 3, 4 *	FPHS WHS	Math (3rd Year)/ CTE	11 – 12	TEC313	TEC314
Global Challenges 1, 2 (DC)	WHS	Science/CTE	9 – 12	SCI611	SCI612
Intro to Engineering Design 1, 2 (DC)	FPHS WHS	Math (3rd Year)/ CTE	9 – 12	TEC111	TEC112
CTE-Arts, Entertainment and Design					
AFJROTC Drill and Ceremonies	WHS	Art/PE/CTE	9 – 12	FLT611	
AFJROTC Management of Cadet Corps 1, 2 (DC) *	WHS	CTE	12	FLT413	FLT414
AFJROTC Milestones in Aviation History 1, 2 (DC)	WHS	CTE	9 – 12	FLT111	FLT112

AFJROTC Survive & Return*	WHS	CTE	10 – 12	FLT313	FLT314
AP Art and Design 1, 2 (DC Exam)	WHS	Art/CTE	10 – 12	FNA131	FNA132
Community Art	FPHS WHS	Art/CTE	10 – 12	FNA133	
Construction Trades 1, 2 (DC) *	WHS	Math (3rd Year)/ CTE	10 – 12	ARC111	ARC112
Digital Photography Beginning (DC)	FPHS WHS	Art/CTE	9 – 12	ATC301	
Digital Photography Advanced (DC)	FPHS WHS	Art/CTE	9 – 12	ATC302	
Glass Art Beginning	FPHS	Art/CTE	9 – 12	FNA113	
Glass Art Advanced	FPHS	Art/CTE	9 – 12	FNA114	
Graphic Design (DC)	FPHS WHS	Art/CTE	9 – 12	ATC321	
Introduction to Woodworking (DC)	WHS	CTE	9 – 12	ARC101	
Pottery Beginning	FPHS WHS	Art/CTE	9 – 12	FNA117	
Pottery Advanced	FPHS WHS	Art/CTE	9 – 12	FNA118	
Video Editing 1, 2 (DC)	FPHS WHS	Art/CTE	9 – 12	ATC211	ATC212
Video Production 1, 2 (DC)	FPHS WHS	Art/CTE	10 – 12	ATC221	ATC222
Visual Art and Design (DC)	FPHS WHS	Art/CTE	9 – 12	FNA111	
Localized CTE Graduation Pathways					
<i>Bio Engineering</i>					
Principles of Biomedical Science 1, 2 (DC)	FPHS WHS	Science/Health/ CTE	9 – 12	SCI115	SCI116
Intro to Engineering Design 1, 2 (DC)	FPHS WHS	Math (3rd Year)/ CTE	9 – 12	TEC111	TEC112
<i>Computer Engineering</i>					
Intro to Computer Science 1, 2 (DC)	FPHS WHS	Math (3rd Year)/ CTE	9 – 12	TEC113	TEC114
Intro to Engineering Design 1, 2 (DC)	FPHS WHS	Math (3rd Year)/ CTE	9 – 12	TEC111	TEC112
<i>Culinary Arts</i>					
Culinary Arts (DC) *	FPHS WHS	CTE	9 – 12	FCS111	
Advanced Culinary Arts (DC) *	FPHS WHS	CTE	9 – 12	FCS113	
Eco System Design 1, 2 (2 period block class) (DC)	FPHS WHS	Science (1) CTE (1)	9 – 12	SCI621	SCI622
<i>Culinary Design</i>					
Culinary Arts (DC) *	FPHS WHS	CTE	9 – 12	FCS111	
Advanced Culinary Arts (DC) *	FPHS WHS	CTE	9 – 12	FCS113	
Graphic Design (DC)	FPHS WHS	Art/CTE	9 – 12	ATC321	

Digital Photography Beginning (DC)	FPHS WHS	Art/CTE	9 - 12	ATC301	
Marketing/Advertising					
Business Management (DC)	FPHS WHS	CTE	9 - 12	BUS111	
Technology Exploration 1, 2 (DC)	FPHS WHS	Art/CTE	9 - 12	ATC311	ATC312
Graphic Design (DC)	FPHS WHS	Art/CTE	9 - 12	ATC321	
Military Computer Systems Programmer					
AFJROTC Milestones into Aviation 1, 2 (DC) *	WHS	CTE	9 - 12	FLT111	FLT112
AP Computer Science 1, 2 (DC Exam)	WHS	Math (3rd Year)/ CTE	10 - 12	TEC231	TEC232
Multimedia Production					
Video Editing 1, 2 (DC)	FPHS WHS	Art/CTE	9 - 12	ATC211	ATC212
Digital Photography Beginning (DC)	FPHS WHS	Art/CTE	9 - 12	ATC301	
Financial Literacy 1 (DC)	FPHS WHS	Math (3rd Year)/ CTE	11 - 12	BUS211	
Natural Resource Systems					
Eco System Design 1, 2 (2 period black class) (DC)	FPHS WHS	Science (1) CTE (1)	9 - 12	SCI621	SCI622
Global Challenges 1, 2 (DC)	WHS	Science/CTE	9 - 12	SCI611	SCI612
Photography					
Digital Photography Beginning (DC)	FPHS WHS	Art/CTE	9 - 12	ATC301	
Digital Photography Advanced (DC)	FPHS WHS	Art/CTE	9 - 12	ATC302	
Yearbook 1, 2 (DC)	FPHS WHS	Art/CTE	10 - 12	ATC401	ATC402
Restaurant Management					
Culinary Arts (DC) *	FPHS WHS	CTE	9 - 12	FCS111	
Advanced Culinary Arts (DC) *	FPHS WHS	CTE	9 - 12	FCS113	
Business Management (DC)	FPHS WHS	CTE	9 - 12	BUS111	
Financial Literacy 1 (DC)	FPHS WHS	Math (3rd Year)/ CTE	11 - 12	BUS211	
Dual Language Program					
AP Spanish Language & Culture	FPHS	Dual Language	9	SLA111	SLA112
Technology Exploration (DC)	FPHS	Art/CTE	9	ATC311	ATC312
English Language Arts (ELA)					
African American Literature 1, 2 CiHS - EWU (DC)	WHS	English	11 - 12	ENG333	ENG334
Bridge to College English 1, 2	FPHS WHS	English	11-12	ENG423	ENG424

Chicanx Literature 1, 2	FPHS WHS	English	11 – 12	ENG451	ENG452
College Comp: Exposition & Argument 1, 2 CiHS - EWU (DC)	FPHS WHS	English	12	ENG433	ENG434
Creative Writing	FPHS	Elective	11 – 12	ENG611	
Food Justice in Action 1, 2 (2 period block class) (DC)	FPHS WHS	CTE/Science (1) English (1)	10 – 12	SCI651	SCI652
Freshman English 1, 2	FPHS WHS	English	9	ENG111	ENG112
Freshman English Advanced 1, 2	FPHS WHS	English	9	ENG 121	ENG122
Freshman Language Arts 1, 2 (IEP)	FPHS WHS	English	9	ENG101	ENG102
Intro to Literature 1, 2 CiHS - EWU (DC)	FPHS WHS	English	11 – 12	ENG437	ENG438
Junior English 1, 2	FPHS WHS	English	11	ENG311	ENG312
Junior Language Arts 1, 2 (IEP)	FPHS WHS	English	11	ENG301	ENG302
Senior Language Arts 1, 2 (IEP)	FPHS WHS	English	12	ENG401	ENG402
Sophomore English 1, 2	FPHS WHS	English	10	ENG211	ENG212
Sophomore English Advanced 1, 2	FPHS WHS	English	10	ENG221	ENG222
Sophomore Language Arts 1, 2 (IEP)	FPHS WHS	English	10	ENG201	ENG202
World Mythology	FPHS	Elective	11 – 12	ENG613	
English Language Development					
Beginning English	FPHS WHS	Elective	9 – 12	ELE501	ELE502
Academic Language Dev.	FPHS	Elective	9 – 12	ELE503	ELE504
Language Through Literature I	FPHS WHS	English	9 – 12	ENG521	ENG522
Language Through Literature II	FPHS WHS	English	9 – 12	ENG523	ENG524
Health & Fitness					
Family Health *	FPHS WHS	Health/CTE	9 – 12	HPE111	
Fitness Specialist 1, 2 (DC) *	FPHS	PE/CTE	11 – 12	HPE211	HPE212
Intro to PE	FPHS WHS	PE	9	HPE112	
Individual & Dual Sports	FPHS	PE	10 – 12	HPE114	
Lifetime Fitness	FPHS	PE	9 – 12	HPE116	
PE Advanced	WHS	PE	10-12	HPE122	
Principles of Biomedical Science 1, 2 (DC)	FPHS WHS	Health/Science/ CTE	9 – 12	SCI115	SCI116
Strength Training	FPHS WHS	PE	10 – 12	HPE115	
Team Sports	FPHS	PE	9 – 12	HPE118	

Unified PE	FPHS WHS	PE	9 - 12	HPE100	
Walking Fitness	FPHS	PE	10-12	HPE117	
AFJROTC Drill and Ceremonies	WHS	Art/PE/CTE	9 - 12	FLT611	
Mathematics					
Aerospace Manufacturing 1, 2 *	FPHS WHS	Math (3rd Year)/ CTE	10 - 12	TEC213	TEC214
Aerospace Manufacturing Advanced 3, 4 *	FPHS WHS	Math (3rd Year)/ CTE	11 - 12	TEC313	TEC314
Algebra I 1, 2	FPHS WHS	Math	9 - 12	MTH111	MTH112
Algebra II 1, 2	FPHS WHS	Math	9 - 12	MTH311	MTH312
Algebra II, Modern 1, 2	FPHS WHS	Math	9 - 12	MTH315	MTH316
AP Calculus A/B 1, 2 (DC Exam)	WHS	Math	11 - 12	MTH631	MTH632
AP Computer Science 1, 2 (DC Exam)	FPHS WHS	Math (3rd Year)/ CTE	10 - 12	TEC231	TEC232
Basic Math 1, 2 (IEP)	FPHS WHS	Math	9 - 12	MTH101	MTH102
Basic Math 3, 4 (IEP)	FPHS WHS	Math	9 - 12	MTH201	MTH202
Bridge to College Mathematics 1, 2	FPHS WHS	Math	12	MTH423	MTH424
Calculus I 1, 2 CiHS - CWU (DC)	FPHS	Math	11 - 12	MTH641	MTH642
Construction Trades 1, 2 (DC) *	WHS	Math (3rd Year)/ CTE	10 - 12	ARC111	ARC112
Consumer Math 1, 2 (IEP)	FPHS WHS	Math	11 - 12	MTH601	MTH602
Financial Literacy 1, 2 (DC)	FPHS WHS	Math (3rd Year)/ CTE	11 - 12	BUS211	BUS212
Geometry 1, 2	FPHS WHS	Math	9 - 12	MTH211	MTH212
Intro to Computer Science 1, 2 (DC)	FPHS WHS	Math (3rd Year)/ CTE	9 - 12	TEC113	TEC114
Intro to Data Science 1, 2 CiHS - UW (DC)	WHS	Math	11 - 12	MTH331	MTH332
Intro to Engineering & Design (DC)	FPHS WHS	Math (3rd Year)/ CTE	9 - 12	TEC111	TEC112
Mathematics in Modern World 1, 2 CiHS - CWU (DC)	WHS	Math (3rd Year)	11-12	MTH425	MTH426
Pre-Algebra 1, 2 (IEP)	FPHS WHS	Math	9 - 12	MTH301	MTH302
Pre-Algebra 3, 4 (IEP)	FPHS WHS	Math	9 - 12	MTH401	MTH402
Precalculus 1, 2	WHS	Math	10 - 12	MTH411	MTH412
Precalculus 1, 2 CiHS - CWU (DC)	FPHS WHS	Math	10 - 12	MTH415	MTH416
Statistics 1, 2	WHS	Math	10 - 12	MTH413	MTH414
Stats, Society, & Decisions 1, 2 CiHS - CWU (DC)	FPHS WHS	Math	12	MTH645	MTH646
Science					

Astronomy	FPHS WHS	Science	11 – 12	SCI635	
Biology 1, 2	FPHS WHS	Science	9	SCI111	SCI112
Biology Advanced 1, 2	FPHS WHS	Science	9	SCI121	SCI122
Biomedical Innovation 1, 2 (DC)	FPHS WHS	Science/CTE	12	SCI415	SCI416
Chemistry 1, 2	FPHS WHS	Science	10 – 12	SCI311	SCI312
Chemistry Advanced 1,2 CiHS – UW (DC)	FPHS WHS	Science	10 – 12	SCI333	SCI334
Eco System Design 1, 2 (2 period block class) (DC)	FPHS WHS	Science (1) CTE (1)	9 – 12	SCI621	SCI622
Food Justice in Action 1, 2 (2 period block class) (DC)	FPHS WHS	CTE/Science (1) English (1)	10 – 12	SCI651	SCI652
Forensic Science 1, 2	FPHS	Science	10 – 12	SCI641	SCI642
Fundamentals of Biology 1, 2 CiHS – CWU (DC)	FPHS WHS	Science	10-12	SCI135	SCI136
Global Challenges 1, 2 (DC)	WHS	Science/CTE	9 – 12	SCI611	SCI612
Human Body Systems 1, 2 (DC)	FPHS WHS	Science/CTE	10 – 12	SCI215	SCI216
Intro to Physics 1,2 CiHS – CWU (DC)	FPHS WHS	Science	11 – 12	SCI413	SCI414
Marine Biology	FPHS WHS	Science	11 – 12	SCI633	
Medical Interventions 1, 2 (DC)	FPHS WHS	Science/CTE	11 – 12	SCI315	SCI316
Physics 1, 2	FPHS WHS	Science	12	SCI411	SCI412
Physical Science 1, 2	FPHS WHS	Science	10	SCI211	SCI212
Physical Science Advanced 1, 2	FPHS WHS	Science	9 – 10	SCI221	SCI222
Principles of Biomedical Science 1, 2 (DC)	FPHS WHS	Health/Science/ CTE	9 – 12	SCI115	SCI116
Restoration Ecology (DC)	WHS	Science/CTE	9 – 12	SCI627	
Social Studies					
AP Human Geography 1, 2 (DC Exam)	FPHS	Social Studies	9 – 12	SST131	SST132
AP World History 1, 2 (DC Exam)	FPHS	Social Studies	10	SST231	SST232
Civics	FPHS WHS	Social Studies	12	SST411	
Contemporary World Problems	FPHS WHS	Social Studies	12	SST412	
Culture & History of Latin America for Heritage Speakers	FPHS	Social Studies	10 – 12	SST218	
Ethnic Studies I	FPHS WHS	Social Studies	11 – 12	SST617	
Ethnic Studies II	FPHS WHS	Social Studies	12	SST618	
Intro to Psychology	FPHS WHS	Social Studies	9 – 11	SST630	

Psychology 1, 2 CiHS – EWU (DC)	FPHS WHS	Social Studies	11 – 12	SST635	SST636
Politics & Government 1, 2 CiHS – EWU (DC)	FPHS WHS	Social Studies	12	SST433	SST434
Sociology 1, 2	FPHS	Social Studies	10 – 12	SST615	SST616
Street Law	FPHS	Social Studies	10 – 12	SST619	
U.S. History 1, 2	FPHS WHS	Social Studies	11	SST311	SST312
U.S. Hist to 1877/ U.S. Hist Since 1877, CiHS – EWU (DC)	FPHS WHS	Social Studies	11	SST333	SST334
Voice of the Pacific Northwest	WHS	Social Studies	9 – 12	SST612	
Washington State History	FPHS	Social Studies	9 – 12	SST611	
World History 1200 – 1800 CE	FPHS	Social Studies	10	SST211	
World History 1800 CE – Present	FPHS	Social Studies	10	SST212	
WH From 1500 1, 2 CiHS – EWU (DC)	WHS	Social Studies	10	SST233	SST234
WH Topics: History of Asia & Pacific Islands	WHS	Social Studies	10 – 12	SST213	
WH Topics: Industrialization to Cold War	WHS	Social Studies	10 – 12	SST215	
WH Topics: Latin American History	WHS	Social Studies	10 – 12	SST214	
Special Education (Coursework determined by IEP)					
Basic Math 1, 2	FPHS WHS	Math	9 – 12	MTH101	MTH102
Basic Math 3, 4	FPHS WHS	Math	9 – 12	MTH201	MTH202
Community Based Learning 1, 2	FPHS WHS	Elective	10 – 12	ELE301	ELE302
Consumer Math 1, 2	FPHS WHS	Math	11 – 12	MTH601	MTH602
Freshman Language Arts 1, 2	FPHS WHS	English	9	ENG101	ENG102
Junior Language Arts 1, 2	FPHS WHS	English	11	ENG301	ENG302
Learning Strategies 1, 2	FPHS WHS	Elective	9 – 10	ELE103	ELE104
Learning Strategies Advanced 1, 2	FPHS WHS	Elective	11 – 12	ELE105	ELE106
Pre-Algebra 1, 2	FPHS WHS	Math	9 – 12	MTH301	MTH302
Pre-Algebra 3, 4	FPHS WHS	Math	9 – 12	MTH401	MTH402
Senior Language Arts 1, 2	FPHS WHS	English	12	ENG401	ENG402
Sophomore Language Arts 1, 2	FPHS WHS	English	10	ENG201	ENG202
Support Center I 1, 2	FPHS WHS	Elective	9 – 12	ELE201	ELE202
Support Center II 1, 2	FPHS WHS	Elective	11 – 12+	ELE203	ELE204

Tools for Success 1, 2	FPHS WHS	Elective	9 - 12	ELE101	ELE102
World Language					
AP Spanish Language 1, 2 (DC Exam)	FPHS WHS	World Language	10 - 12	WRL231	WRL232
American Sign Language 1, 2 (DC)	FPHS WHS	World Language/ CTE	9 - 12	WRL111	WRL112
American Sign Language 3,4 (DC)	FPHS WHS	World Language/ CTE	10 - 12	WRL113	WRL114
American Sign Language 5,6	WHS	World Language/ CTE	11 - 12	WRL115	WRL116
Japanese 1, 2	FPHS WHS	World Language	9 - 12	WRL121	WRL122
Japanese 3, 4	FPHS WHS	World Language	10 - 12	WRL123	WRL124
Japanese 5, 6	FPHS WHS	World Language	11 - 12	WRL125	WRL126
Japanese 7, 8	FPHS WHS	World Language	11-12	WRL126	WRL127
Spanish 1, 2	FPHS WHS	World Language	9 - 12	WRL101	WRL102
Spanish 3, 4	FPHS WHS	World Language	10 - 12	WRL103	WRL104
Spanish 5, 6	FPHS WHS	World Language	10 - 12	WRL105	WRL106
Spanish 7, 8	FPHS	World Language	11 - 12	WRL107	WRL108
Spanish for Heritage Speakers 1, 2	FPHS WHS	World Language	9 - 12	WRL201	WRL202
Additional Electives					
Counseling & Career Center Assistant	FPHS WHS	Elective	11 - 12	CIE103	CIE104
Leadership 1, 2	FPHS WHS	Elective	9 - 12	ELE231	ELE232
Leadership Advanced 3, 4 CiHS - EWU (DC)	WHS	Elective	12	ELE435	ELE436
Library Assistant	FPHS WHS	Elective	11 - 12	CIE105	CIE106
Main Office Assistant	FPHS WHS	Elective	11 - 12	CIE101	CIE102
Teacher Assistant	FPHS WHS	Elective	11 - 12	CIE107	CIE108
Restorative Justice Center Student Advocate	WHS	Elective	10 - 12	CIE201	CIE202

DC Dual Credit
*Industry Recognized Credential

COURSE DESCRIPTIONS

The Arts

Performing Arts

Drama

Semester, Grades 9, 10, 11, 12

Course Number: FNA211

Dual Credit: No

Graduation Requirement: Arts

Prerequisites: None

This introductory class is intended to develop acting skills and the fundamentals of public speaking. Students develop skills in portraying characters on stage through their relationships with one another and to their environments, performing in group scenes from various plays. Emphasis is also placed on research and the analysis of play scripts to discover details of the environment, action, and intentions of the characters.

Drama Advanced 1&2 (WHS Only)

Full Year, Grades 10, 11, 12

Course Number: FNA213/214

Dual Credit: No

Graduation Requirement: Arts

Prerequisites: Teacher permission

This course is designed for students who want to experience the process of creating a production. Students focus on methods of acting, technical theater, advertising, and promotion, as well as certain design elements such as costuming and set design. The school play is rehearsed during this class. Enrollment in this course requires after-school rehearsals and some Saturday rehearsals.

Beginning Treble Choir 1&2 (FPHS Only)

Full Year, Grades 9, 10, 11, 12

Course Number: FNA305/306

Dual Credit: No

Graduation Requirement: Arts

Prerequisites: None

This performance class is for soprano and alto singers who have little to no experience singing in a choir. Students learn how to read music, develop vocal techniques specific to alto and soprano singers, and collaborate with others. The music repertoire is arranged for soprano and alto singers with music genres ranging from classical to pop and world music. Performances are required several times a year.

Tenor/Bass Choir 1&2 (FPHS Only)

Full Year, Grades 9, 10, 11, 12

Course Number: FNA301/302

Dual Credit: No

Graduation Requirement: Arts

Prerequisites: None

This performance class is for tenor and bass singers who have little to no experience singing in a choir. Students learn how to read music, develop vocal techniques specific to tenor and bass singers, and collaborate with others. The music repertoire is arranged for tenor and bass singers with music genres ranging from classical to pop and world music. Performances are required several times a year.

Intermediate Treble Choir 1&2 (FPHS only)

Full Year, Grades 9, 10, 11, 12

Course Number: FNA313/314

Dual Credit: No

Graduation Requirement: Arts

Prerequisites: Previous school or community choral experience or teacher permission.

Student vocalists learn intermediate and advanced techniques involved in the performance of various styles of music. Students prepare and perform soprano and alto literature in all styles, as soloists and with others. After school/evening performances are required several times a year.

Concert Choir 1&2

Full Year, Grades 9, 10, 11, 12

Course Number: FNA315/316

Dual Credit: No

Graduation Requirement: Arts

Prerequisites: Previous school or community choral experience or teacher permission.

Student vocalists learn intermediate and advanced vocal techniques and choreography involved in the performance of assorted styles of music. Students should be comfortable singing a solo melodic line, harmonizing with ensemble members, and be capable of light/moderate physical activity while singing. Students may take on a leadership role as section leader or assistant director. After-school/evening performances are required several times a year.

Chamber Choir 1&2

Full Year, Grades 10, 11, 12

Course Number: FNA327/328

Dual Credit: No

Graduation Requirement: Arts

Prerequisites: Audition and teacher permission required.

Chamber Choir vocalists focus on styles from modern pop music to jazz classics, to Renaissance Music through choral techniques, rehearsal, and performance. Included are elements of ear training, sight reading and music theory. Some extra costs may be expected for travel and uniforms. Students are expected to be at additional required performances outside of the regular choir calendar. (Concurrent enrollment in Concert Choir required at FPHS.)

Concert Band 1&2

Full Year, Grades 9, 10, 11, 12

Course Number: FNA411/412

Dual Credit: No

Graduation Requirement: Arts

Prerequisites: Prior experience on a band instrument. All other students, teacher permission required.

Concert Band is a non-audition group that focuses on the basics of technique, tone production, and ensemble performance for students who play woodwind, brass, or percussion instruments. Through rigorous rehearsals and practices, students gain valuable experience on their instruments, learn teamwork, and gain self-confidence through performance. Concert Band members perform at evening concerts, school assemblies, football games, basketball games, and the Daffodil Parade.

Symphonic Band 1&2 (FPHS only)

Full Year, Grades 9, 10, 11, 12

Course Number: FNA413/414

Dual Credit: No

Graduation Requirement: Arts

Prerequisites: Prior experience on a band instrument. All other students, teacher permission required.

Symphonic Band focuses on more advanced technique, tone production, ensemble performance, and individual study for woodwind, brass, and percussion players. Through rigorous rehearsals and practices, students gain valuable experience on their instruments, learn teamwork, and gain self-confidence through performance. Symphonic Band members perform at evening concerts, school assemblies, football games, basketball games, and the Daffodil Parade.

Wind Ensemble 1&2

Full Year, Grades 9, 10, 11, 12

Course Number: FNA415/416

Dual Credit: No

Graduation Requirement: Arts

Prerequisites: Open to all students by audition/teacher approval. Audition materials are available from the director.

This audition-based performance course is for students with at least one year of high school level experience on a woodwind, brass, or percussion instrument. The course teaches advanced technique, tone production, ensemble performance, and individual study for woodwind, brass, and percussion players. Members of this group attend summer band camp as well as evening concerts, school assemblies, football games, basketball games, and regional parades. Students in this ensemble class will also perform at regional contests and festivals throughout the school year.

Instrumental Jazz Ensemble 1&2

Full Year, Grades 9, 10, 11, 12

Course Number: FNA419/420

Dual Credit: No

Graduation Requirement: Arts

Prerequisites: Audition and teacher permission required; concurrent enrollment in Symphonic or Concert Band at FPHS; Wind or Percussion Ensemble at WHS.

Students learn the basics of jazz music through performance in a full-sized jazz ensemble with a focus on jazz articulation, improvisation, jazz styles, and jazz theory. Members of this ensemble will perform at evening concerts, community events and local and regional contests and festivals.

Beginning Drumline 1&2 (WHS Only)

Semester, Grades 9, 10, 11, 12

Course number: FNA421/422

Dual Credit: No

Graduation Requirement: Arts

Prerequisites: None

This class is intended for students who have limited or no experience in music and who desire to learn about the basics of drumming. Students learn how to read music, be part of an ensemble, learn teamwork, strategies for personal practice, and grow musically through performance experiences.

Advanced Drumline 1&2

Full Year, Grades 9, 10, 11, 12

Course Number: FNA437/438

Dual Credit: No

Graduation Requirement: Arts

Prerequisites: Open to all students by audition/teacher approval. Audition materials are available from the director.

This performance-based course is for percussion students with one year of experience (or students with approval from the director). Students learn intermediate and advanced techniques on all marching percussion instruments, including visual aspects of performance. Members of this group attend summer band camp as well as after school/evening performances (Concerts, Football/Basketball Games, and Parades) throughout the year.

Steel Drum Ensemble Beginning 1&2 (WHS Only)

Full Year, Grades 9, 10, 11, 12

Course Number: FNA611/612

Dual Credit: No

Graduation Requirement: Arts

Prerequisites: Previous music experience not required but preferred.

This performance-based course teaches the basics of steel drums including reading music (notes and rhythms), sticking, concert preparation and performances. Members are required to attend all performances of the ensemble (i.e. concerts, community events, assemblies), most of which take place in the evening.

Steel Drum Ensemble Advanced 1&2 (WHS Only)

Semester, Grades 10, 11, 12

Course Number: FNA621/622

Dual Credit: No

Graduation Requirement: Arts

Prerequisites: One year of steel drums and/or audition with the teacher.

This performance-based course is designed to continue teaching the basics of steel drums including reading music (notes and rhythms), sticking, concert preparation and performances with additional focus on music theory, soloing, and composition. Members are required to attend all performances of the ensemble (i.e. concerts, community events, assemblies), most of which take place in the evening. Students are given plenty of advance notice regarding performances.

History of Classical Music (WHS only)

Semester, Grades 9, 10, 11, 12

Course Number: FNA575

Dual Credit: No

Graduation Requirement: Arts

Prerequisites: None

Students survey classical music from the Middle Ages to the Romantic Era (up to the 20th century). Students relate their own musical experiences to music history and learn how they are personally affected by music. Students develop an appreciation for a range of styles of music through a rigorous listening regimen. Students may take this course on its own or in a sequence with The History of Rock and Roll.

The History of Rock and Roll

Semester, Grades 9, 10, 11, 12

Course Number: FNA571

Dual Credit: No

Graduation Requirement: Arts

Prerequisites: None

Students learn about all major areas of modern Rock and Roll music from the 1940's to the present. Students also relate their own musical experiences to music history and learn how they are personally affected by music. Students develop an appreciation for a range of styles of music through a rigorous listening regimen.

Guitar Beginning (FPHS only)

Semester, Grades 9, 10, 11, 12

Course number: FNA615

Dual Credit: No

Graduation Requirement: Arts

Prerequisites: None

In Beginning Guitar, students learn basic notes and chords for guitar or ukulele. After mastering these, students learn simple folk songs and twelve bar blues. Required equipment is an acoustic guitar or ukulele and a notebook for music. School instruments are available at no charge.

Keyboarding Beginning (WHS Only)

Semester, Grades 9, 10, 11, 12

Course Number: FNA601

Dual Credit: No

Graduation Requirement: Arts

Prerequisites: None

Keyboarding class focuses on learning how to play notes, rhythms and chords using modern styles such as pop and rock music. Students learn how to use an electric keyboard as the basis for a modern music ensemble. No prior musical experience is required to succeed in this class. Performances are considered for assemblies, concerts, or community events.

Keyboarding Advanced (WHS Only)

Semester, Grades 9, 10, 11, 12

Course Number: FNA602

Dual Credit: No

Graduation Requirement: Arts

Prerequisites: Completion of Beginning Keyboarding or audition with the teacher

Students continue to play notes, rhythms, and chords on an electric keyboard as the basis for a modern music ensemble. Students expand their understanding of how electric keyboards function in today's musical styles. are considered for assemblies, concerts, or community events.

Ukulele Beginning (WHS Only)

Semester, Grades 9, 10, 11, 12

Course Number: FNA617

Dual Credit: No

Graduation Requirement: Arts

Prerequisites: None

This course includes introductory through intermediate ukulele playing techniques. Students study open chords, barre chords, finger-picking and common strum patterns, reading chords, and tablature. Playing tests are a part of the course curriculum and solo opportunities are offered to students interested in performing individually. Performances are considered for assemblies, concerts, and community events. Beginners are welcome and are matched with more experienced players as peer tutors. All materials are provided.

Ukulele Advanced (WHS Only)

Semester, Grades 9, 10, 11, 12

Course Number: FNA618

Dual Credit: No

Graduation Requirement: Arts

Prerequisites: Completion of Beginning Ukulele or audition with the teacher

Students continue to study open chords, barre chords, finger-picking and common strum patterns, reading chords, and tablature. Playing tests are a part of the course curriculum and solo opportunities are offered to students interested in performing individually. Performances are considered for assemblies, concerts, and community events. All materials are provided.

Technical & Visual Arts

AFJROTC Drill and Ceremonies (WHS only)

Semester, Grades 9, 10, 11, 12

Course Number: FLT611

Dual Credit: No

Graduation Requirement: CTE, Physical Education, Arts

Prerequisites: Must currently be enrolled in an AFJROTC academic course.

CTE Program Area: Arts, Entertainment and Design

In Drill and Ceremonies students will learn advanced drill & ceremonies and creatively develop exhibition drill maneuvers in preparation for several performances throughout the year. Students compete and are judged at Northwest Drill & Rifle League competitions. Students already enrolled in AFJROTC may also take this zero hour course.

AP Art and Design 1&2

Full Year, Grades 10, 11, 12

Course Number: FNA131/132

Dual Credit: Yes – Credit by Exam

Graduation Requirement: Arts, CTE

Prerequisites: Teacher review required.

CTE Program Area: Arts, Entertainment and Design

In AP Art and Design 1&2 students experience the equivalent to an introductory college course in studio art foundations. This course focuses on concepts, methods and techniques in a variety of media including glass, ceramic, mixed media, digital media, and drawing and painting. Students create a portfolio of work in at least one of three areas of study: Drawing, 2-D Design, or 3-D design. *This can be used to meet college admission portfolio requirements and will be assessed for the AP exam and to obtain college credit.*

Community Art

Semester, Grades 10, 11, 12

Course Number: FNA133

Dual Credit: No

Graduation Requirement: Arts, CTE

Prerequisites: C or better in any entry level art class (Visual Art and Design, Glass Art Beginning, Pottery, Graphic Design, Photography, Yearbook)

CTE Program Area: Arts, Entertainment and Design

In Community Art students use and develop their art skills and interests, exploring a variety of art media, including drawing, painting, sculpture, photography, and digital artwork. Students design and work together to create public artworks ranging from murals to installations and community art projects. Students learn how artists get funding and approval for community projects and will learn to write art proposals.

Digital Photography Beginning

Semester, Grades 9, 10, 11, 12

Course Number: ATC301

Dual Credit: Yes – CTE Dual Credit

Graduation Requirement: Arts, CTE

Prerequisites: None

CTE Program Area: Arts, Entertainment and Design

Beginning Digital Photography focuses on exploration in the field of photography. The course includes basic theories, methods and techniques used to plan, produce, and distribute photos. Includes instruction in lighting, DSLR camera settings, composition, photo editing and related computer applications. Students who earn a grade of 'C' (2.0) or better in this course can earn college credit.

Digital Photography Advanced

Semester, Grades 9, 10, 11, 12

Course Number: ATC302

Dual Credit: Yes – CTE Dual Credit

Graduation Requirement: Arts, CTE

Prerequisites: B or better in Digital Photography Beginning or C with teacher review.

CTE Program Area: Arts, Entertainment and Design

Advanced Digital Photography prepares students for work-based application of photography skills. Includes instruction in specialized camerawork and equipment operation and maintenance, image capture, lighting, software applications, and applications to specific commercial, industrial, and entertainment needs. Students who earn a grade of 'C' (2.0) or better in this course can earn college credit.

Glass Art Beginning (FPHS only)

Semester, Grades 9, 10, 11, 12

Course Number: FNA113

Dual Credit: No

Graduation Requirement: CTE, Arts

Prerequisites: None

CTE Program Area: Arts, Entertainment and Design

Beginning Glass Art prepares students to apply knowledge and technical skills in creating, producing, and selling products in the fields of glass and mixed media. Instruction includes art theory, design, safety, technical skills, production skills and marketing, sales, entrepreneurship, and management functions associated with operating a small business in professional arts.

Glass Art Advanced (FPHS only)

Semester, Grades 9, 10, 11, 12

Course Number: FNA114

Dual Credit: No

Graduation Requirement: CTE, Arts

Prerequisites: B or better in Glass Art Beginning or C with teacher review.

CTE Program Area: Arts, Entertainment and Design

Advanced Glass Art develops personal expression through glass art. Students design their own artworks, determining the best media and techniques to communicate their ideas to further develop their artistic style, expanding their glass art portfolio. Instruction includes project planning, art analyses, and critiques.

Graphic Design

Semester, Grades 9, 10, 11, 12

Course Number: ATC321

Dual Credit: Yes – CTE Dual Credit

Graduation Requirement: CTE, Arts

Prerequisites: None

CTE Program Area: Arts, Entertainment and Design

Students learn to create digital artwork using Adobe Photoshop, Illustrator and InDesign by utilizing the Elements and Principles of Design. Students gain employable skills for marketing as they develop their own personal design aesthetic. Students are exposed to the entire creative process from concept sketches to layout requirements for printing. Students who earn a grade of 'C' (2.0) or better in this course can earn college credit.

Pottery Beginning

Semester, Grades 9, 10, 11, 12

Course Number: FNA117

Dual Credit: No

Graduation Requirement: CTE, Arts

Prerequisites: None

CTE Program Area: Arts, Entertainment and Design

Beginning Pottery teaches the fundamentals of pottery and sculpture through hands on techniques. Some wheel throwing techniques are explored. Students learn finishing techniques in firing and glazing. Artistic style and ideas are developed while applying the elements of art and principles and design. Historical and contemporary pottery/ceramics are studied as students build their skills and practice of visual literacy.

Pottery Advanced

Semester, Grades 9, 10, 11, 12

Course Number: FNA118

Graduation Requirement: CTE, Arts

Dual Credit: No

Prerequisites: B or better in Pottery Beginning or C with teacher review.

CTE Program Area: Arts, Entertainment and Design

Advanced Pottery expands upon the fundamentals learned in Pottery. Students will increase their knowledge of pottery, sculpture, and complex hand building techniques. Wheel throwing techniques will be reintroduced and elevated. Students learn advanced finishing techniques in firing and glazing.

Technology Exploration 1&2

Semester Grades 9, 10, 11, 12

Course Number: ATC311/312

Dual Credit: Yes – CTE Dual Credit

Graduation Requirement: CTE, Arts

Prerequisites: None

CTE Program Area: Business and Marketing

Technology Exploration 1&2 explores the basics of digital photography as well as basic design principles using Photoshop, InDesign, and computer science skills. Students learn Microsoft Word and Microsoft PowerPoint 2019 with the opportunity to earn industry certification. Students who earn a grade of 'C' (2.0) or better in this course can earn college credit.

Unified Arts (WHS only)

Semester, Grades 10, 11, 12

Course Number: FNA100

Dual Credit: No

Graduation Requirement: Arts

Prerequisites: Teacher approval for neurotypical peer students

This visual art class centers around students with varied abilities. Students learn about all seven elements of art and the principles of design. Students also learn the basics of calligraphy, cursive, drawing, painting, and other projects tailored to students' specific needs. Students work together and on their own. Neurotypical students need teacher approval before being added to the class.

Video Editing 1&2

Full Year, Grades 9, 10, 11, 12

Course Number: ATC211/212

Dual Credit: Yes – CTE Dual Credit

Graduation Requirement: CTE, Arts

Prerequisites: None

CTE Program Area: Arts, Entertainment and Design

Video Editing 1&2 is a performance-based class for students interested in the television or film production industries. Coursework includes practical experience shooting and editing videos. The course includes instruction on sound, lighting, camera operations, production preparation, and related computer applications. Students who earn a grade of 'C' (2.0) or better in this course can earn college credit.

Video Production 1&2

Full Year, Grades 10, 11, 12

Course Number: ATC221/222

Dual Credit: Yes – CTE Dual Credit

Graduation Requirement: CTE, Arts

Prerequisites: Video Editing 1&2

CTE Program Area: Arts, Entertainment and Design

Video Production 1&2 is a performance-based class for students interested in the television or film production industries. Coursework includes practical experience shooting and editing videos. The course includes instruction on script writing, sound, lighting, camera operations, production preparation, and related computer applications. Students who earn a grade of 'C' (2.0) or better in this course can earn college credit.

Visual Art and Design

Semester, Grades 9, 10, 11, 12

Course Number: FNA111

Dual Credit: Yes – CTE Dual Credit

Graduation Requirement: CTE, Arts

Prerequisites: None

CTE Program Area: Arts, Entertainment and Design

Visual Art and Design explores a variety of two-dimensional art media including a variety of types and styles of digital media, graphic design, drawing and painting with a focus on art skills that transfer to careers in the arts and beyond. Students who earn a grade of 'C' (2.0) or better in this course can earn college credit.

Yearbook 1&2

Full Year, Grades 10, 11, 12

Course Number: ATC401/402

Dual Credit: Yes – CTE Dual Credit

Graduation Requirement: CTE, Arts

Prerequisites: C or better in Digital Photography, Graphic Design or teacher review.

CTE Program Area: Business and Marketing

Yearbook 1&2 develops a creative theme and designs the school's yearbook. Students will apply technical knowledge and skills to the layout, design, and publication. All phases of publication including copy writing, layout, and photography are covered by applying sophisticated computer technology to contemporary design. Students will be required to work outside of class time to meet publishing deadlines. Students who earn a grade of 'C' (2.0) or better in this course can earn college credit.

Career and Technical Education - CTE

Career/Technical Field CTE Course Sequence: Complete two or more credits in a CTE course progression within the same Program Area or between specific Program Areas tailored to the student's goals and relevant to the postsecondary pathway(s) outlined in the student's High School and Beyond Plan.

CTE Program Areas

Agricultural Education	Business and Marketing	Health Sciences
Arts, Entertainment and Design	Community Health	Manufacturing and Design

Aerospace Manufacturing 1&2

Full Year, Grades 10, 11, 12

Course Number: TEC213/214

Dual Credit: No

Graduation Requirement: CTE, Mathematics (3rd Year)

Prerequisites: None

CTE Program Area: Manufacturing and Design

Aerospace Manufacturing 1&2 provides an overview of mechanical behavior and characteristics of aerospace materials including metal alloys, polymers, ceramics, and composites. Students will receive hands-on experience in machining, testing, and assessing the properties and performance of aerospace materials. Seniors who complete this course and earn an industry-recognized certificate and will have an opportunity to interview local companies. *Industry Recognized Credential: OSHA 10 Hr. General Industry and Core Plus Aerospace/Advanced Manufacturing.*

Aerospace Manufacturing Advanced 3&4

Full Year, Grades 11, 12

Course Number: TEC313/314

Dual Credit: No

Graduation Requirement: CTE, Mathematics (3rd Year)

Prerequisites: Successful Completion of Aerospace Manufacturing 1&2

CTE Program Area: Manufacturing and Design

Aerospace Manufacturing Advanced 3&4 prepares students to apply basic engineering principles and technical skills in support of engineers and other professionals engaged in developing, manufacturing, and testing aircraft, spacecraft, and their systems. This includes instruction in aircraft/spacecraft systems technology; design and testing. *Industry Recognized Credential: Core Plus Aerospace/Advanced Manufacturing and OSHA 10 Hr. General Industry.*

AFJROTC Drill and Ceremonies (WHS only)

Semester, Grades 9, 10, 11, 12

Course Number: FLT611

Dual Credit: No

Graduation Requirement: CTE, Physical Education, Arts

Prerequisites: Must currently be enrolled in an AFJROTC academic course.

CTE Program Area: Arts, Entertainment and Design

In Drill and Ceremonies, students learn advanced drill & ceremonies to creatively develop exhibition drill maneuvers in preparation for several performances throughout the year. Students compete and are judged at Northwest Drill & Rifle League competitions. Students already enrolled in AFJROTC may also take this zero hour course.

AFJROTC Management of the Cadet Corps and Leadership 1&2 (WHS only)

Full Year, Grades 12

Course Number: FLT413/414

Dual Credit: No

Graduation Requirement: CTE

Prerequisites: Successful Completion of Two Years of AFJROTC or teacher review.

CTE Program Area: Arts, Entertainment and Design

This course provides cadets the opportunity to put theories of the previous leadership courses into practice. Planning, organizing, coordinating, directing, controlling, and decision-making will be done by cadets. Cadets apply what they learned in their leadership courses and put into practice their communication, decision-making, person-interaction, managerial, and organizational skills. *Industry Recognized Credential: Certificate of Training or Certificate of Completion.*

AFJROTC Milestones in Aviation History and Leadership 1&2 (WHS only)

Full Year, Grades 9, 10, 11, 12

Course Number: FLT111/112

Dual Credit: No

Graduation Requirement: CTE

Prerequisites: None

CTE Program Area: Arts, Entertainment and Design

AFJROTC Milestones into Aviation History and Leadership 1&2 explores the history of aviation from the early days of flight to the present space programs. Learn about job opportunities in the aerospace industry. Students build and fly a Balsa wood airplane. Students develop self-confidence and pride in themselves, uniform, school, and community. Leadership, community service, and management opportunities are available and stressed.

AFJROTC Survival: Survive and Return (WHS only)

Full Year, Grades 10, 11, 12

Course Number: FLT313/314

Dual Credit: No

Graduation Requirement: CTE

Prerequisites: Successful Completion of Milestones into Aviation History or teacher review.

CTE Program Area: Arts, Entertainment and Design

AFJROTC Survival: Survive and Return 1&2 is based on the Air Force's actual survival manual and training in skills, knowledge, and attitudes necessary to successfully perform fundamental tasks needed for survival. The course presents "good to know" information useful in any situation such as a lost hiker or someone stranded in a snowstorm and includes a field trip to McChord Airfield for instruction/demonstrations from Air Force Survival, Evasion, Rescue, Escape instructors. *Industry Recognized Credential: Certificate of Training or Certificate of Completion*

American Sign Language 1&2

Full Year, Grades 9, 10, 11, 12

Course Number: WRL111/112

Dual Credit: Yes – CTE Dual Credit

Graduation Requirement: CTE, World Language

Prerequisites: None

CTE Program Area: Community Health

American Sign Language 1&2 course offers specialized and technical training in the field of Deaf studies and allows students opportunities to facilitate communication between Deaf and hearing people using American Sign Language (ASL). Students learn basic communication components and grammar of ASL, as well as becoming familiar with Deaf culture. Students who earn a grade of 'C' (2.0) or better in this course can earn college credit.

American Sign Language 3&4

Full Year, Grades 10, 11, 12

Course Number: WRL113/114

Dual Credit: Yes – CTE Dual Credit

Graduation Requirement: CTE, World Language

Prerequisites: Successful completion of American Sign Language 1&2.

CTE Program Area: Community Health

American Sign Language 3&4 prepares students for facilitating communication between Deaf and Hearing people using American Sign Language (ASL) in a variety of settings. Students learn communication components of ASL as well as content specific vocabulary in a variety of areas such as medicine, law, and finance. ASL students also have opportunities to become participants in the Deaf community. Students who earn a grade of 'C' (2.0) or better in this course can earn college credit.

American Sign Language 5&6 (WHS only)

Full Year, Grades 11, 12

Course Number: WRL115/116

Dual Credit: No

Graduation Requirement: CTE, World Language

Prerequisites: Successful completion of American Sign Language 1&2 and American Sign Language 3&4.

CTE Program Area: Community Health

American Sign Language 5&6 provides hands-on opportunities within the classroom setting in facilitating communication between Deaf and hearing people using ASL. Students explore various careers that utilize and examine services that are available for Deaf/hard-of-hearing individuals in their community. Students also research levels of professionalism, confidentiality, and the Code of Ethics for ASL Interpreters.

AP Art and Design 1&2

Full Year, Grades 10, 11, 12

Course Number: FNA131/132

Dual Credit: Yes – Credit by Exam

Graduation Requirement: CTE, Arts

Prerequisites: Teacher review required.

CTE Program Area: Arts, Entertainment and Design

In AP Art and Design 1&2 students experience the equivalent to an introductory college course in studio art foundations. This course focuses on concepts, methods, and techniques in a variety of media including glass, ceramic, mixed media, digital media, drawing, and painting. Students create a portfolio of work in at least one of three areas of study: Drawing, 2-D Design, or 3-D design. *This can be used to meet college admission portfolio requirements and will be assessed for the AP exam and to obtain college credit.*

AP Computer Science 1&2

Full Year, Grades 10, 11, 12

Course Number: TEC231/232

Dual Credit: Yes – Credit by Exam

Graduation Requirement: CTE, Mathematics (3rd Year)

Prerequisites: Introduction to Computer Science or teacher review.

CTE Program Area: Business and Marketing

AP Computer Science 1&2 focuses on the general writing and implementation of generic and customized programs to drive operating systems and that generally prepares individuals to apply the methods and procedures of software design and programming to software installation and maintenance.

Biomedical Innovation 1&2

Full Year, Grades 12

Course Number: SCI415/416

Dual Credit: Yes – CTE Dual Credit

Graduation Requirement: CTE, Science (Lab)

NCAA Qualified

Prerequisites: Principles of Biomedical Science 1&2, Human Body Systems 1&2, Medical Interventions 1&2

CTE Program Area: Health Sciences

Biomedical Innovation 1&2 is the final course in the Biomedical Science sequence of classes where students build on the knowledge and skills gained from previous courses to design innovative solutions for the most pressing health challenges of the 21st century. Students address topics ranging from public health and biomedical engineering to clinical medicine and physiology through an independent design project. Students who earn a grade of 'C' (2.0) or better in this course can earn college credit.

Business Management

Semester, Grades 9, 10, 11, 12

Course Number: BUS111

Dual Credit: Yes – CTE Dual Credit

Graduation Requirement: CTE

Prerequisites: None

CTE Program Area: Business and Marketing

This course includes instruction in business administration and management; enterprise planning; small business operations; human resources (selection and supervision); customer service skills and concepts; e-commerce; with applications to specific sectors, products, and services. Students who earn a grade of 'C' (2.0) or better in this course can earn college credit.

Careers in Education 1&2

Full Year, Grades 10, 11, 12

Course Number: CIE311/312

Dual Credit: Yes – CTE Dual Credit

Graduation Requirement: CTE

Prerequisites: Child Development Recommended or teacher review

CTE Program Area: Community Health

Careers in Education 1&2 focuses on the general theory and practice of learning and teaching; the basic principles of educational psychology; the art of teaching; the planning and administration of educational activities; and the social foundations of education. First semester is spent in the traditional high school classroom and second semester is spent in an internship at a local elementary school. Students who earn a grade of 'C' (2.0) or better in this course can earn college credit. *Industry Recognized Credential: ETS ParaPro.*

Child Development

Semester, Grades 9, 10, 11, 12

Course Number: FCS213

Dual Credit: Yes – CTE Dual Credit

Graduation Requirement: CTE

Pre-requisite: None

CTE Program Area: Community Health

Child Development explores the physical, emotional, social, and intellectual growth of children from prenatal development through early childhood. Through hands-on projects like Baby Think it Over Babies, career exploration, and opportunities for First Aid/CPR certification, students develop the knowledge and professional skills needed for any career working with individuals, communities and/or becoming a parent/caregiver. Students who earn a grade of 'C' (2.0) or better in this course can earn college credit. *Industry Recognized Certification: Adult and Pediatric First Aid/CPR/AED.*

Community Art

Semester, Grades 10, 11, 12

Course Number: FNA133

Dual Credit: No

Graduation Requirement: CTE, Arts

Pre-requisite: C or better in any entry level art class (Visual Art and Design, Glass Art Beginning, Pottery, Graphic Design, Photography, Yearbook)

CTE Program Area: Arts, Entertainment and Design

In Community Art students use and develop their art skills and interests, exploring a variety of art media, including drawing, painting, sculpture, photography, and digital artwork. Students design and work together

to create public artworks ranging from murals to installations and community art projects. Students learn how artists get funding and approval for community projects and will learn to write art proposals.

Construction Trades 1&2 (WHS only)

Full Year, Grades 10, 11, 12

Course Number: ARC111/112

Dual Credit: Yes – CTE Dual Credit

Graduation Requirement: CTE, Mathematics (3rd Year)

Prerequisites: Introduction to Woodworking and physically fit to lift and carry heavy objects.

CTE Program Area: Arts, Entertainment and Design

Construction Trades 1&2 prepares students for a high demand, high wage career in construction. Students learn through a variety of carpentry and construction related projects to develop and challenge their skills. Topics covered include basic blueprint creation and reading, hand and power tool safety and use, framing, electrical wiring, and more. Students who earn a grade of 'C' (2.0) or better in this course can earn college credit. *Industry Recognized Credential: OSHA 10 Hr. General Industry and Core Plus: Construction*

Culinary Arts Beginning

Semester, Grades 9, 10, 11, 12

Course Number: FCS111

Dual Credit: Yes – CTE Dual Credit

Graduation Requirement: CTE

Prerequisites: None

CTE Program Area: Community Health

Beginning Culinary Arts trains students in safety and sanitation, preparation of baked goods, nutrition, culinary skills, and equipment. Students demonstrate their knowledge through individual and group activities. Students who earn grade of 'C' (2.0) or better in this course can earn college credit. *Industry Recognized Credential: Washington State Food Worker Card.*

Culinary Arts Advanced

Semester, Grades 9, 10, 11, 12

Course Number: FCS113

Dual Credit: Yes – CTE Dual Credit

Graduation Requirement: CTE

Prerequisites: Culinary Arts Beginning and teacher review.

CTE Program Area: Community Health

Advanced Culinary Arts trains students for career opportunities in the food service/culinary arts industry. Students practice safety and sanitation procedures, customer relations, meal planning, and more advanced food preparation skills. Students who earn a grade of 'C' (2.0) or better in this course can earn college credit. *Industry Recognized Credential: Washington State Food Worker Card.*

Digital Photography Beginning

Semester, Grades 9, 10, 11, 12

Course Number: ATC301

Dual Credit: Yes – CTE Dual Credit

Graduation Requirement: CTE, Arts

Prerequisites: None

CTE Program Area: Arts, Entertainment and Design

Beginning Digital Photography focuses on exploration in the field of photography. The course includes basic theories, methods and techniques used to plan, produce, and distribute photos. Includes instruction in lighting, DSLR camera settings, composition, photo editing, and related computer applications. Students who earn a grade of 'C' (2.0) or better in this course can earn college credit.

Digital Photography Advanced

Semester, Grades 9, 10, 11, 12

Course Number: ATC302

Dual Credit: Yes – CTE Dual Credit

Graduation Requirement: Arts, CTE

Prerequisites: C or better in Digital Photography Beginning

CTE Program Area: Arts, Entertainment and Design

Advanced Digital Photography prepares students for work-based application of photography skills. Includes instruction in specialized camerawork and equipment operation and maintenance, image capture, lighting, software applications, and applications to specific commercial, industrial, and entertainment needs. Students who earn a grade of 'C' (2.0) or better in this course can earn college credit.

Eco System Design 1&2

Full Year (2 period class), Grades 9, 10, 11, 12

Course Number: SCI621/622

Dual Credit: Yes – CTE Dual Credit

Graduation Requirement: CTE *and* Science (Biology, Lab)

Prerequisites: None

CTE Program Area: Agriculture Sciences

Eco System Design 1&2 is a two-period class that studies environmental science and farming. Students are bussed to the farm every day for class. The course is designed as a hands-on course that digs into systems thinking, biology, and ecology concepts while learning practical skills of growing food, business, and leadership skills. Students work and earn outside every week throughout the school year. Students who earn a grade of 'C' (2.0) or better in this course can earn college credit.

Entrepreneurship

Semester, Grades 10, 11, 12

Course Number: BUS112

Dual Credit: No

Graduation Requirement: CTE

Prerequisites: Business Management

CTE Program Area: Business and Marketing

Entrepreneurship is designed to introduce students to the world of small business ownership and management. This course builds students' skills in the knowledge of types of business ownership, legal issues, business finance, start-up costs, business trends, site selection, marketing, pricing strategies and the development of a business plan on the students' product or service of choice and operate a class business. Students who earn a grade of 'C' (2.0) or better in this course can earn college credit.

Family Health

Semester, Grades 9, 10, 11, 12

Course Number: HPE111

Dual Credit: No

Graduation Requirement: CTE, Health

Prerequisites: None

CTE Program Area: Community Health

Family Health prepares students for life-long decision making, problem solving, critical thinking, and management skills related to health and wellness issues impacting families. The primary role is enabling students to assume an active role in developing healthy lifestyles for themselves and others. This course focuses on analyzing influences of family, peers, culture, media, technology, and other factors on health behaviors. *Industry Recognized Credential: Adult and Pediatric First Aid/CPR/AED.*

Financial Literacy 1&2

Full Year, Grades 11, 12

Course Number: BUS211/212

Dual Credit: Yes – CTE Dual Credit

Graduation Requirement: CTE, Mathematics (3rd Year)

Prerequisites: None

CTE Program Area: Business and Marketing

Financial Literacy 1&2 develops financial management skills to prepare students to make smart financial decisions. Topics include banking services, consumer credit, budgeting, saving, investing, stocks, insurance, retirement planning, how to buy a car and more. Students learn how to avoid financial mistakes and fix them if they do happen. Students who earn a grade of 'C' (2.0) or better in this course can earn college credit.

Fitness Specialist 1&2 (FPHS only)

Full Year, Grades 11, 12

Course Number: HPE211/212

Dual Credit: Yes – CTE Dual Credit

Graduation Requirement: CTE, Physical Education

Prerequisites: Successful completion (C or better) in Intro to PE.

CTE Program Area: Health Sciences

Students will learn about the fitness industry and careers, the muscular system, exercise physiology, and how to make individualized workout and nutritional plans. This is a hybrid Physical Education course, as students apply what they learn in the classroom to the weight room and exercise. Students who earn a grade of 'C' (2.0) or better in this course can earn college credit. *Industry Recognized Credential: Adult and Pediatric First Aid/CPR/AED. Fitness Trainer Certificate.*

Food Justice in Action 1&2

Full Year, Grades 10, 11, 12

Course Number: SCI651/652

Dual Credit: Yes – CTE Dual Credit

Graduation Requirement: CTE/Science (Lab), English

NCAA Qualified (FPHS only) - English

Prerequisites: Intake application with Farm Staff

CTE Program Area: Agricultural Education

Food Justice in Action 1&2 is a two-period interdisciplinary program off-campus on the ten-acre school district farm. The course uses food justice as the starting place for conversations, reading, writing, and critically engaging with relevant social/environmental issues and application of real-world skills in action projects. Students must be willing to participate in required outdoor farm work in varying weather conditions, as outdoor participation is a graded component of the course. Students who earn a grade of 'C' (2.0) or better in this course can earn college credit.

Glass Art Beginning (FPHS only)

Semester, Grades 9, 10, 11, 12

Course Number: FNA113

Dual Credit: No

Graduation Requirement: CTE, Arts

Prerequisites: None

CTE Program Area: Arts, Entertainment and Design

Beginning Glass Art prepares students to apply knowledge and technical skills in creating, producing, and selling products in the fields of glass and mixed media. Instruction includes art theory, design, safety, technical skills, production skills and marketing, sales, entrepreneurship, and management functions associated with operating a small business in professional arts.

Glass Art Advanced (FPHS only)

Semester, Grades 9, 10, 11, 12

Course Number: FNA114

Dual Credit: No

Graduation Requirement: CTE, Arts

Prerequisites: B or better in Glass Art Beginning or C with teacher review.

CTE Program Area: Arts, Entertainment and Design

Advanced Glass Art develops personal expression through glass art. Students design their own artworks, determining the best media and techniques to communicate their ideas to further develop their artistic style expanding their glass art portfolio. Instruction includes project planning, art analyses, and critiques.

Global Challenges 1&2 (WHS only)

Full Year, Grades 9, 10, 11, 12

Course Number: SCI611/612

Dual Credit: Yes – CTE Dual Credit

Graduation Requirement: CTE, Science (Lab)

Prerequisites: None

CTE Program Area: Manufacturing and Design

Global Challenges 1&2 explores the most pressing environmental and social issues of the 21st century.

Students are encouraged to problem-solve, critically analyze, and debate topics ranging from climate change, species loss, pollution, and the food system to design locally relevant solutions to solve global issues. Students who earn a grade of 'C' (2.0) or better in this course can earn college credit.

Graphic Design

Semester, Grades 9, 10, 11, 12

Course Number: ATC321

Dual Credit: Yes – CTE Dual Credit

Graduation Requirement: CTE, Arts

Prerequisites: None

CTE Program Area: Arts, Entertainment and Design

Students learn to create digital artwork using Adobe Photoshop, Illustrator, and InDesign by utilizing the Elements and Principles of Design. Students gain employable skills for marketing as they develop their own personal design aesthetic. Students are exposed to the entire creative process from concept sketches to layout requirements for printing. Students who earn a grade of 'C' (2.0) or better in this course can earn college credit.

Human Body Systems 1&2

Full Year, Grades 10, 11, 12

Course Number: SCI215/216

Dual Credit: Yes – CTE Dual Credit

Graduation Requirement: CTE, Science (Lab)

NCAA Qualified

Prerequisites: None

CTE Program Area: Health Sciences

Human Body Systems (Anatomy and Physiology) 1&2 prepares students to examine the interactions of body systems as they explore the structures of the human body and how they function to maintain homeostasis.

Students build organs and tissues on a skeletal mannequin, work through interesting re-world cases, and play the roles of medical professionals to solve medical mysteries. Students who earn a grade of 'C' (2.0) or better in this course can earn college credit.

Independent Living (WHS only)

Semester, Grades 10, 11, 12

Course Number: FCS311

Dual Credit: No

Graduation Requirement: CTE

Prerequisites: None

CTE Program Area: Community Health

Independent Living prepares students for responsible decision making in a variety of areas that confront young people as they transition to living independently. The primary focus of Independent Living is the development of essential skills for living on their own, in a family, or with others. Students will build essential life skills related to proper money management, interpersonal relationships, career research and choices, and nutrition guidance.

Introduction to Computer Science 1&2

Full Year, Grades 9, 10, 11, 12

Course Number: TEC113/114
Dual Credit: Yes – CTE Dual Credit
Graduation Requirement: CTE, Mathematics (3rd Year)
Prerequisites: None

CTE Program Area: Business and Marketing

Introduction to Computer Science 1&2 covers the foundations of computer science and basic programming, with an emphasis on helping students develop logical thinking and problem-solving skills. At a time when computer science affects how people work and live, Computer Science empowers students grades 9-12 to become creators, instead of merely consumers. Students who earn a grade of 'C' (2.0) or better in this course can earn college credit.

Introduction to Engineering Design 1&2

Full Year, Grades 9, 10, 11, 12
Course Number: TEC111/112
Dual Credit: Yes – CTE Dual Credit
Graduation Requirement: CTE, Mathematics (3rd Year)
Prerequisites: None

CTE Program Area: Manufacturing and Design

IED explores the Problem-Solving Process utilizing math, science, leadership and engineering standards applied to hands-on projects. Students work individually and in teams to design solutions to various problems using 3-D modeling software, 3-D printers, laser engravers and more traditional shop equipment. Students who earn a grade of 'C' (2.0) or better in this course can earn college credit.

Introduction to Restorative Justice Center and Student Advocacy (WHS Only)

Semester, Grades 9, 10, 11
Course Number: CIE200
Dual Credit: No
Graduation Requirement: CTE
Prerequisites: None

CTE Program Area: Community Health

This course teaches and uses Restorative Practices (RPs) to strengthen relationships between individuals and social connections within communities. Rooted in practices from Indigenous Communities across the world, RPs recognize that strong relationships are a key ingredient in creating safe communities. The course explores frameworks, theory, and practices that focus on social emotional skill development, conflict resolution, reconciliation, and advocacy skills that translate to community spaces and a variety of human services fields.

Introduction to Woodworking (WHS Only)

Semester, Grades 9, 10, 11, 12
Course Number: ARC101
Dual Credit: Yes – CTE Dual Credit
Graduation Requirement: CTE
Prerequisites: None

CTE Program Area: Arts, Entertainment and Design

This course introduces students to the safe use of woodworking tools and equipment to create a variety of wood project. Students would also gain experience in measurement, plan reading, joinery, fasteners, adhesives, and varieties of woods and wood products. Students who earn a grade of 'C' (2.0) or better in this course can earn college credit.

Marketing

Semester, Grades 9, 10, 11, 12
Course Number: BUS115
Dual Credit: Yes – CTE Dual Credit

Graduation Requirement: CTE

Prerequisites: None

CTE Program Area: Business and Marketing

Marketing teaches marketing skills and concepts that apply to many industries today. Students develop skills related to interpersonal communication, self-presentation, economics, marketing, sales, employability, career discovery, and ethical decision-making. This class will include aspects of sports, entertainment, and retail marketing. Students who earn a grade of 'C' (2.0) or better in this course can earn college credit.

Medical Interventions 1&2

Full Year, Grades 11, 12

Course Number: SCI315/316

Dual Credit: Yes – CTE Dual Credit

Graduation Requirement: CTE, Science (Lab)

NCAA Qualified

Prerequisites: Human Body Systems 1&2 or AP Biology 1&2 or AP Chemistry 1&2

CTE Program Area: Health Sciences

Students learn how to screen and fight infection; screen and evaluate the code in human DNA; prevent, diagnose and treat cancer; and prevail when the organs of the body begin to fail. Through these scenarios, students are exposed to a range of interventions related to immunology, surgery, genetics, pharmacology, medical devices, and diagnostics. Students who earn a grade of 'C' (2.0) or better in this course can earn college credit.

Pottery Beginning

Semester Grades 9, 10, 11, 12

Course Number: FNA117

Dual Credit: No

Graduation Requirement: CTE, Arts

Prerequisites: None

CTE Program Area: Arts, Entertainment and Design

Beginning Pottery teaches the fundamentals of pottery and sculpture through hands on techniques. Some wheel throwing techniques are explored. Students learn finishing techniques in firing and glazing. Artistic style and ideas are developed while applying the elements of art and principles and design. Historical and contemporary pottery/ceramics are studied as students build their skills and the practice of visual literacy.

Pottery Advanced

Semester, Grades 9, 10, 11, 12

Course Number: FNA118

Graduation Requirement: CTE, Arts

Dual Credit: No

Prerequisites: B or better in Pottery Beginning or C with teacher review.

CTE Program Area: Arts, Entertainment and Design

Advanced Pottery expands upon the fundamentals learned in Pottery. Students will increase their knowledge of pottery, sculpture, and complex hand building techniques. Wheel throwing techniques will be reintroduced and elevated. Students learn advanced finishing techniques in firing and glazing.

Principles of Biomedical Science 1&2

Full Year, Grades 9, 10, 11, 12

Course Number: SCI115/116

Dual Credit: Yes – CTE Dual Credit

Graduation Requirement: CTE, Science (Lab), Health

NCAA Qualified (FPHS only)

Prerequisites: None

CTE Program Area: Health Sciences

Explore the world of biomedical science through hands-on experiences. Students will analyze crime scene evidence, assist medical examiners, diagnose and treat patients, and respond to medical emergencies. They'll

track disease outbreaks and collaborate with professionals to design solutions for local and global health challenges. Whether pursuing a career in healthcare or tackling real-world problems, students will develop critical thinking skills and gain practical experience in experimental design and scientific innovation. Students who earn a grade of 'C' (2.0) or better in this course can earn college credit.

Restoration Ecology (WHS only)

Semester, Grades 9, 10, 11, 12

Course Number: SCI627

Dual Credit: Yes – CTE Dual Credit

Graduation Requirement: CTE, Science (Lab)

Prerequisites: None

CTE Program Area: Agriculture Sciences

Restoration Ecology is a hands-on course that utilizes the on-campus wetland as a living laboratory. Students engage in real world citizen science to understand the social, ecological, and cultural importance of natural spaces to the community. Students will engage in active restoration work predominantly outdoors. Students who earn a grade of 'C' (2.0) or better in this course can earn college credit.

Retail Operations (DECA Student Store) 1&2 (FPHS only)

Full Year, Grades 11, 12

Course Number: BUS220/221

Dual Credit: Yes – CTE Dual Credit

Graduation Requirement: CTE

Prerequisites: Entrepreneurship; DECA participation recommended

CTE Program Area: Business and Marketing

Retail Operations allows students to operate the student store to develop 21st century skills including ordering merchandise, scheduling, inventory control, balancing a cash register, developing promotion plans and selling while learning all aspects of operating a small business and participating in DECA, an international association of marketing students. Students who earn a grade of 'C' (2.0) or better in this course can earn college credit. *Industry Recognized Credential: Washington State Food Worker Card.*

Sports Medicine Beginning 1&2 (FPHS only)

Full Year, Grades 10, 11, 12

Course Number: MDC111/112

Dual Credit: Yes – CTE Dual Credit

Graduation Requirement: CTE

Prerequisites: None

CTE Program Area: Health Sciences

Sports Medicine Beginning 1&2 focuses on an introduction to sports medicine. It covers the profession of athletic training, injury prevention, emergency planning, athletic taping, and injury management, while participating in a hands-on training in athletic training that includes hands-on training with the certified athletic trainer. Students who earn a grade of 'C' (2.0) or better in this course can earn college credit. *Industry Recognized Credential: Adult and Pediatric First Aid/CPR/AED.*

Sports Medicine Advanced 3&4 (FPHS only)

Full Year, Grades 11, 12

Course Number: MDC121/122

Dual Credit: Yes – CTE Dual Credit

Graduation Requirement: CTE

Prerequisites: Sports Medicine Beginning 1 & 2

CTE Program Area: Health Sciences

Sports Medicine Advanced 3&4 focuses on advanced sports medicine concepts. This includes assisting beginning student athletic trainers in lab, presenting sports medicine topics, completing independent projects, and participating in an optional hands-on training in athletic training with the certified athletic

trainer. Students who earn a grade of 'C' (2.0) or better in this course can earn college credit. *Industry Recognized Credential: Adult and Pediatric First Aid/CPR/AED.*

Technology Exploration 1&2

Semester Grades 9, 10, 11, 12

Course Number: ATC311/312

Dual Credit: Yes – CTE Dual Credit

Graduation Requirement: CTE, Arts

Prerequisites: None

CTE Program Area: Business and Marketing

Technology Exploration 1&2 introduces students to a variety of technology fields and tools, including photography, graphic design, digital systems, and emerging technologies. Through hands-on projects and problem-based learning, students apply critical thinking, collaboration, and technical skills to design, build, and evaluate real-world solutions. Students who earn a grade of 'C' (2.0) or better in this course can earn college credit.

Video Editing 1&2

Full Year, Grades 9, 10, 11, 12

Course Number: ATC211/212

Dual Credit: Yes – CTE Dual Credit

Graduation Requirement: CTE, Arts

Prerequisites: None

CTE Program Area: Arts, Entertainment and Design

Video Editing 1&2 is a performance-based class for students interested in the television or film production industries. Coursework includes practical experience shooting and editing videos. The course includes instruction on sound, lighting, camera operations, production preparation, and related computer applications. Students who earn a grade of 'C' (2.0) or better in this course can earn college credit.

Video Production 1&2

Full Year, Grades 10, 11, 12

Course Number: ATC221/222

Dual Credit: Yes – CTE Dual Credit

Graduation Requirement: CTE, Arts

Prerequisites: Video Editing 1&2

CTE Program Area: Arts, Entertainment and Design

Video Production 1&2 is a performance-based class for students interested in the television or film production industries. Coursework includes practical experience shooting and editing videos. The course includes instruction on script writing, sound, lighting, camera operations, production preparation, and related computer applications. Students who earn a grade of 'C' (2.0) or better in this course can earn college credit.

Visual Art and Design

Semester, Grades 9, 10, 11, 12

Course Number: FNA111

Dual Credit: Yes – CTE Dual Credit

Graduation Requirement: CTE, Arts

Prerequisites: None

CTE Program Area: Arts, Entertainment and Design

Visual Art and Design explores a variety of two-dimensional art media including a variety of types and styles of digital media, graphic design, drawing and painting with a focus on art skills that transfer to careers in the arts and beyond. Students who earn a grade of 'C' (2.0) or better in this course can earn college credit.

Working with Children

Semester, Grades 9, 10, 11, 12

Course Number: FCS214

Dual Credit: Yes – CTE Dual Credit

Graduation Requirement: CTE

Prerequisites: Child Development

CTE Program Area: Community Health

This course expands students' understanding of child development and prepares them to put developmental theories and practical skills into action when working with children. Students build strong communication skills for partnering with families and community members from diverse backgrounds, while practicing strategies that promote children's health, safety, and overall well-being. Students also learn about state guidelines and regulations for childcare programs. By the end of the course, students earn a certificate that qualifies them to work as an assistant in a childcare classroom. Students who earn a grade of 'C' (2.0) or better in this course can earn college credit. *Industry Recognized Credential: Child Care Basics.*

Yearbook 1&2

Full Year, Grades 10, 11, 12

Course Number: ATC401/402

Dual Credit: Yes – CTE Dual Credit

Graduation Requirement: CTE, Arts

Prerequisites: C or better in Digital Photography, Graphic Design or teacher review.

CTE Program Area: Business and Marketing

Yearbook 1&2 develops a creative theme and designs the school's yearbook. Students will apply technical knowledge and skills to the layout, design and publication. All phases of publication including copy writing, layout, and photography are covered by applying sophisticated computer technology to contemporary design. Students will be required to work outside of class time to meet publishing deadlines. Students who earn a grade of 'C' (2.0) or better in this course can earn college credit.

Dual Language Program

The Dual Language Program at Franklin Pierce High School promotes bilingualism and biliteracy, grade-level academic achievement, and sociocultural competence for participating students. Students may enter at high school from the Dual Language Program at Ford Middle School or from other schools based on Spanish-language proficiency and/or newcomer status.

AP Spanish Language & Culture

Full Year, Grade 9

Course Number: SLA111/112

Dual Credit: No

Graduation Requirement: Language

Prerequisites: Prior Dual Language Enrollment, Spanish-language proficiency assessment and/or newcomer status

Students continue to develop their writing, speaking, listening, and reading skills in Spanish with metalinguistic awareness of the two program languages while completing 300-level college coursework as they prepare to take the AP Exam. Students read a variety of literary and informational texts and become familiar with common literary terms, figurative language, and general vocabulary. Students focus mainly on expository and argumentative, as well as narrative writing and project-based learning to become active participants in developing and organizing their ideas.

Technology Exploration 1&2

Semester, Grades 9, 10, 11, 12

Course Number: ATC311/312

Dual Credit: Yes – CTE Dual Credit

Graduation Requirement: CTE, Arts

Prerequisites: None

CTE Program Area: Business and Marketing

Technology Exploration 1&2 introduces students to a variety of technology fields and tools, including photography, graphic design, digital systems, and emerging technologies. Through hands-on projects and problem-based learning, students apply critical thinking, collaboration, and technical skills to design, build, and evaluate real-world solutions using skills in Spanish with metalinguistic awareness of the two program languages. Students who earn a grade of 'C' (2.0) or better in this course can earn college credit.

English Language Arts

English courses engage students in reading, writing, speaking, listening, and thinking that will support them throughout life. Students study different types of literature and learn a variety of writing techniques and styles while also collaborating to improve their speaking and listening skills. Washington state requires four years of high school English. Each Franklin Pierce Schools student is required to take a Full Year of freshman, sophomore, junior and senior English.

Freshman English 1&2

Full Year, Grade 9

Course Number: ENG111/112

Dual Credit: No

Graduation Requirement: English

NCAA Qualified

Prerequisites: None

Students continue to develop their writing, speaking, listening, and reading skills. Students read a variety of literary and informational texts and become familiar with common literary terms, figurative language, and general vocabulary. Students focus on expository, argumentative, and narrative writing as well as project-based learning to become active participants in developing and organizing their ideas.

Freshman English Advanced 1&2

Full Year, Grade 9

Course Number: ENG121/122

Dual Credit: No

Graduation Requirement: English

NCAA Qualified

Prerequisites: None

In addition to the skills and focus of Freshman English 1/2, students read more challenging texts, develop more specific vocabulary, and learn to write at a more complex level. This course is recommended for those considering advanced English classes such as AP or College in the High School at the junior and/or senior level.

Language Arts 1&2

Full Year, Grades 9, 10, 11, 12

Course Numbers: Grade 9=ENG101/102
 Grade 10=ENG 201/202
 Grade 11=ENG 301/302
 Grade 12=ENG 401/402

Dual Credit: No

Graduation Requirement: English

NCAA Qualified (WHS only)

Prerequisites: IEP Determined

This course emphasizes intense writing and reading instruction. The Jane Schaeffer writing technique, Language! curriculum and/or reasoning and writing curriculum will be used to strengthen literacy skills. A high level of direct instruction and student participation is utilized in all Language Arts courses.

Sophomore English 1&2

Full Year, Grade 10

Course Number: ENG211/212

Dual Credit: No

Graduation Requirement: English

NCAA Qualified

Prerequisites: None

Students build on the writing, speaking, listening, and reading skills developed in Freshman English 1/2, with a focus on preparation for the SBAC ELA assessment. Students read a variety of literary and informational texts and increase familiarity with literary terms, figurative language, and general vocabulary. Students focus on expository, argumentative, and narrative writing as well as project-based learning to become active participants in developing and organizing their ideas.

Sophomore English Advanced 1&2

Full Year, Grade 10

Course Number: ENG221/222

Dual Credit: No

Graduation Requirement: English

NCAA Qualified

Prerequisites: None

In addition to the skills and focus of Sophomore English 1/2, students will read more challenging texts, develop more specific vocabulary, and learn to write at a more complex level. This course is recommended for those considering advanced English classes such as AP or College in the High School at the junior and/or senior level.

Junior English 1&2

Full Year, Grade 11

Course Number: ENG311/312

Dual Credit: No

Graduation Requirement: English

NCAA Qualified (FPHS only)

Prerequisites: None

In this course, students develop skills in writing, reading, and speaking. Composition, vocabulary, grammar, drama, poetry, short story, and the novel will be studied. There is an emphasis on American literature which reflects eras in American history.

Food Justice in Action 1&2

Full Year, Grades 10, 11, 12

Course Number: SCI651/652

Dual Credit: Yes – CTE Dual Credit

Graduation Requirement: CTE/ Science (Lab) and English

NCAA Qualified (FPHS only) - English

Prerequisites: Intake application with Farm Staff

CTE Program Area: Agricultural Education

Food Justice in Action 1&2 is a two-period interdisciplinary program off-campus on the ten-acre school district farm. The course uses food justice as the starting place for conversations, reading, writing, and critically engaging with relevant social/environmental issues and application of real-world skills in action projects. Students must be willing and physically able to participate in required outdoor farm work in varying weather conditions, as outdoor participation is a graded component of the course. Students who earn a grade of 'C' (2.0) or better in this course can earn college credit.

Creative Writing (FPHS only)

Semester, Grades 11, 12

Course Number: ENG611

Dual Credit: No
Graduation Requirement: Elective

NCAA Qualified

Prerequisites: None

Students examine themselves and the world around them through the art of writing and creative expression. This is achieved through creating original works and reading and analyzing relevant works of literature. This semester long class is divided up between writing poetry, short fiction, and a brief exposure to creative non-fiction.

World Mythology (FPHS only)

Semester, Grades 11, 12

Course Number: ENG613

Dual Credit: No

Graduation Requirement: Elective

NCAA Qualified

Prerequisites: None

Students examine myths, legends, and stories from multiple cultures across the world dating back to the beginning of storytelling as we know it. Students study heroes, tricksters, creation myths, and more from a variety of places and look at the common elements that tie us all together in the human experience as we all look to the world around us to find answers to life's big questions.

Introduction to Literature 1&2, CiHS – EWU

Full Year, Grades 11, 12

Course Number: ENG437/438

Dual Credit: Yes – College Course Completion

Graduation Requirement: English

NCAA Qualified

Prerequisites: Grade of 3.0 (B) or above in previous ELA class OR Level 3 or above on SBA ELA OR completion of Bridge to College English OR teacher recommendation

This rigorous college-level course is offered in the high school by Eastern Washington University, equivalent to ENGL170. Literary approaches in human experience are examined including short fiction, poetry, and drama. Focuses on the elements that make up literature, with supporting discussion of ideas, attitudes, problems, and values. See College in the High School information in Dual Credit Options section of course catalog for enrollment, credit and tuition information. Students who earn a grade of 'C' (2.0) or better in this course can earn college credit.

Chicanx Literature 1&2

Full Year, Grades 11, 12

Course Number: ENG451/452

Dual Credit: No

Graduation Requirement: English

NCAA Qualified (WHS only)

Prerequisites: None

In this literature course, we will take an exciting journey through Chicanx (Mexican American) literature. We will explore how this literature effects, documents, and expresses Chicanx identities and politics. Through our journey we will use novels, short stories, poetry, spoken word, essays, and film to examine the diversity of themes and issues presented in Chicanx literature.

African American Literature 1&2, CiHS – EWU (WHS only)

Full Year, Grades 11, 12

Course Number: ENG333/334

Dual Credit: Yes – College Course Completion

Graduation Requirement: English

NCAA Qualified

Prerequisites: Grade of 3.0 (B) or above in previous ELA class OR Level 3 or above on SBA ELA OR completion of Bridge to College English OR teacher recommendation

This rigorous college-level course is offered by Eastern Washington University, equivalent to ENGL 381 (cross-credit AAST 381). Literary approaches in human experience are examined including short fiction, poetry, and drama. Focuses on the elements that make up literature, with supporting discussion of ideas, attitudes, problems, and values. See College in the High School information in Dual Credit Options section of course catalog for enrollment, credit, and tuition information. Students who earn a grade of 'C' (2.0) or better in this course can earn college credit.

Bridge to College English Language Arts 1&2

Full Year, Grade 11 or 12 (*Grade 11 recommended for students pursuing College in the High School coursework in Grade 12*)

Course Number: ENG423/424

Dual Credit: No

Graduation Requirement: English

NCAA Qualified (WHS only)

Prerequisites: none

This course is designed to prepare students to be college and career ready and emphasizes reading, writing, speaking & listening, and research skills. Students engage with rigorous texts and activities to develop the capacities of literacy, including deepening appreciation of other cultures, valuing evidence, responding to varying tasks across content areas, and navigating technology to support their work. See Transition Courses in the Graduation Pathways section for more information.

College Composition: Exposition and Argumentation 1&2, CiHS – EWU

Full Year, Grade 12

Course Number: ENG433/434

Dual Credit: Yes – College Course Completion

Graduation Requirement: English

NCAA Qualified

Prerequisites: Grade of 3.0 (B) or above in previous ELA class OR Level 3 or above on SBA ELA OR completion of Bridge to College English OR teacher recommendation

This rigorous college-level course is offered in the high school by Eastern Washington University, equivalent to ENGL101. It provides opportunities for students to develop and enhance their written communication skills and stresses the organization, development, and support of ideas and perspective in exposition and argumentation as public discourse. See College in the High School information in Dual Credit Options section of course catalog for enrollment, credit, and tuition information. Students who earn a grade of 'C' (2.0) or better in this course can earn college credit.

English Language Development

Beginning English

Full Year, Grades 9, 10, 11, 12

Course Number: ELE 501/502

Dual Credit: No

Prerequisites: Have been attending U.S. schools 1.5 years or less, Active Placement in the ELD Program, and at the Entering or Beginning Levels (Levels 1 and 2) of English proficiency.

This course for multilingual students acquiring English is aligned with the English Language Proficiency standards and focuses on building vocabulary, reading, writing, phonemic awareness, and speech skills in English, as well as introducing the U.S. school system and culture. This class is an elective credit and does not count towards an English Language Arts credit. This class may be repeated for credit depending on student needs and teacher guidance.

Academic Language Development (FPHS Only)

Full Year, Grades 9, 10, 11, 12

Course Number: ELE 503/504

Dual Credit: No

Prerequisites: Active Placement in the EL Program and at the high-Beginning, Developing, and Expanding Levels (Levels 2 – 4) of English Language proficiency.

This course for multilingual students includes more intensive instruction in reading and writing in English. Students further develop their skills in vocabulary, grammar, and oral and written expression. This class is an elective credit and does not count towards an English Language Arts credit. This class may be repeated for credit depending on student needs and teacher guidance.

Language Through Literature, Level 1

Full Year, Grades 9, 10, 11, 12

Course Number: ENG521/522

Dual Credit: No

Prerequisites: Active Placement in the EL Program

This course is designed for multicultural students acquiring English to develop their English language proficiency through English Language Arts content. It includes instruction in reading and writing about literature, as well as vocabulary, grammar, and oral and written expression across genres. This class meets the English Language Arts credit for 9th or 10th grade English.

Language Through Literature, Level 2

Full Year, Grades 9, 10, 11, 12

Course Number: ENG523/524

Dual Credit: No

Prerequisites: Active Placement in the EL Program

This course is designed as a continuation to Language through Literature, Level 1, for multilingual students acquiring English to develop their English language proficiency through English Language Arts content. This class meets the English Language Arts credit for 10th grade English.

Health & Physical Education

All students complete three semesters of Physical Education and one semester of Health to meet Graduation Requirements. Courses are co-ed. PE students are required to dress in appropriate workout clothes and shoes - an athletic T-shirt, athletic style shorts, socks and rubber soled athletic shoes. (No black soled shoes are allowed in class.) Sweats or warm-ups are highly recommended for winter months and outdoor cardio days. Satisfactory completion of PE courses requires regular attendance and participation in all activities. Unless specified otherwise, grading will be based on active involvement, participation level, written tests, and completed coursework.

Freshmen are required to take a one-semester Health class and a one-semester Intro to PE. In grades 9-12, students may choose from additional courses listed.

Family Health

Semester, Grades 9, 10, 11, 12

Course Number: HPE111

Dual Credit: No

Graduation Requirement: CTE, Health

Prerequisites: None

CTE Program Area: Community Health

Family Health prepares students for life-long decision making, problem solving, critical thinking, and management skills related to health and wellness issues impacting families. The primary role is enabling students to assume an active role in developing healthy lifestyles for themselves and others. This course focuses on analyzing influences of family, peers, culture, media, technology, and other factors of health behaviors. *Industry Recognized Credential: Adult and Pediatric First Aid/CPR/AED.*

Intro to P.E.

Semester, Grade 9

Course Number: HPE112

Dual Credit: No

Graduation Requirement: Physical Education

Prerequisites: None

This is the first Physical Education course to be taken and must be satisfactorily completed before enrolling in any other Physical Education courses. The class emphasizes personal fitness through participation in a wide range of activities drawing from: general fitness testing, aerobic exercise, weight training, circuit training, cardio, team & individual sports. This introductory course sets students up for success in lifelong fitness activities after high school.

Advanced P.E. (WHS only)

Semester, Grades 10, 11, 12

Course Number: HPE122

Dual Credit: No

Graduation Requirement: Physical Education

Prerequisites: Successful completion of Intro to P.E./Teacher Permission

This course is for highly motivated individuals with a strong work ethic and an interest in competitive game play. The course covers a wide range of advanced weight training, circuit training, cardio, team and individual sports with a strong emphasis on personal fitness through active participation in general fitness testing, aerobic exercise, cardiorespiratory endurance, weight room etiquette and training. Activities are tailored to ability levels of the students in class. This class may be repeated for credit.

Individual and Dual Sports (FPHS only)

Semester, Grades 10, 11, 12

Course Number: HPE114

Dual Credit: No

Graduation Requirement: Physical Education

Prerequisites: Intro to PE

This course emphasizes fitness through participation in a variety of individual and dual sports that can serve as lifetime fitness activities. Students test regularly on knowledge, skills, and fitness throughout the class. Grading is based upon mastery of skills, rules, regulations, and participation. Potential activities include tennis, badminton, paddle ball, bowling, golf, ultimate Frisbee, fitness testing, and others. This class may be repeated for credit.

Lifetime Fitness (FPHS only)

Semester, Grades 9, 10, 11, 12

Course Number: HPE116

Dual Credit: No

Graduation Requirement: Physical Education

Prerequisites: Intro to PE

This class provides students the opportunity to improve their fitness levels, improve self-esteem by creating a positive concept of themselves, and to have a better understanding of the importance of physical activity in living a long, healthy life. Workout opportunities include floor aerobics, step, circuit, fitness days, muscular fitness, flexibility, and a chance to create personalized routines. This class may be repeated for credit.

Strength Training

Semester, Grades 10, 11, 12

Course Number: HPE115

Dual Credit: No

Graduation Requirement: Physical Education

Prerequisites: Intro to PE

This physically demanding class is designed for students desiring to improve strength and endurance through a highly structured weight training program. Participants develop an understanding of strength training and its effects on the mind and body. Grading is based upon mastery of skills, rules, regulations, participation, and record keeping. This class may be repeated for credit.

Team Sports (FPHS only)

Semester, Grades 9, 10, 11, 12

Course Number: HPE118

Dual Credit: No

Graduation Requirement: Physical Education

Prerequisites: Intro to PE

This course emphasizes fitness through participation in a variety of team sports activities. Students test regularly on knowledge, skills, and fitness throughout the class. Grading is based upon mastery of skills, rules, regulations, and participation. Potential activities include basketball, fleet ball, Frisbee football, football, hockey, volleyball, softball, soccer, track & field, and others. This class may be repeated for credit.

Unified PE

Semester, Grades 9, 10, 11, 12

Course Number: HPE100

Dual Credit: No

Graduation Requirement: Physical Education

Prerequisites: Teacher approval

This Physical Education class pairs student leaders/mentors with students in the Special Education program. Student leaders help students with disabilities access and engage in team/individual sports, cardiorespiratory endurance, and other physical education activities. Must have teacher approval before being added to the class. This class may be repeated for credit.

Walking Fitness (FPHS only)

Semester, Grades 10, 11, 12

Course Number: HPE118

Dual Credit: No

Graduation Requirement: Physical Education

Prerequisites: Intro to PE

This course is designed to teach and apply the principles of lifetime physical fitness, utilizing the five major components of cardio-respiratory endurance, muscular strength, muscular endurance, flexibility, and body composition. A variety of health and wellness issues will be addressed. The components of fitness will be met through structured individually paced fitness walking techniques and strength conditioning exercises. This class may be repeated for credit.

AFJROTC Drill and Ceremonies (WHS only)

Semester, Grades 9, 10, 11, 12

Course Number: FLT611

Dual Credit: No

Graduation Requirement: CTE, Physical Education, Arts

Prerequisites: Must currently be enrolled in an AFJROTC academic course.

CTE Program Area: Arts, Entertainment and Design

In Drill and Ceremonies students will learn advanced drill and ceremonies and creatively develop exhibition drill maneuvers in preparation for several performances throughout the year. Students compete and are judged at Northwest Drill & Rifle League competitions. Students already enrolled in AFJROTC may also take this zero hour course.

Fitness Specialist 1&2 (FPHS only)

Full Year, Grades 11, 12

Course Number: HPE211/212

Dual Credit: Yes – CTE Dual Credit

Graduation Requirement: CTE, Physical Education

Prerequisites: Successful completion (C or better) in Intro to PE.

CTE Program Area: Health Sciences

Fitness Specialist 1&2 prepares students to work in the fitness industry - in health and fitness clubs, wellness centers, public and private recreation facilities, hospitals, and corporate fitness programs. In this class students apply what they learn in the weight room with student athletes. Students who earn a grade of 'C' (2.0) or better in this course can earn college credit. *Industry Recognized Credential: Adult and Pediatric First Aid/CPR/AED. Fitness Trainer Certificate.*

Principles of Biomedical Science 1&2

Full Year, Grades 9, 10, 11, 12

Course Number: SCI115/116

Dual Credit: Yes – CTE Dual Credit

Graduation Requirement: CTE, Science (Lab), Health

NCAA Qualified (FPHS only)

Prerequisites: None

CTE Program Area: Health Sciences

Explore the world of biomedical science through hands-on experiences. Students will analyze crime scene evidence, assist medical examiners, diagnose and treat patients, and respond to medical emergencies. They'll track disease outbreaks and collaborate with professionals to design solutions for local and global health challenges. Whether pursuing a career in healthcare or tackling real-world problems, students will develop critical thinking skills and gain practical experience in experimental design and scientific innovation. Students who earn a grade of 'C' (2.0) or better in this course can earn college credit.

Mathematics

Mathematics courses prepare students for postsecondary education and career success. Washington state requires three years of high school mathematics including Algebra I, Geometry, and a third year aligned with students' interests and postsecondary plans. FPS recommends students complete Algebra I, Geometry, and Algebra II/Modern Algebra II, with additional mathematics classes available for elective credit.

Basic Math 1&2

Full Year, Grades 9, 10, 11, 12

Course Number: MTH 101/102

Dual Credit: No

Graduation Requirement: Mathematics

Prerequisites: IEP Determined

This course emphasizes intense mathematics instruction. The curriculum that is used focuses on whole number operations, fractions, decimals, and percentages as well as problem solving strategies that teach students how to apply the above skills. A high level of direct instruction and student participation is utilized in all Basic Math courses.

Basic Math 3&4

Full Year, Grades 9, 10, 11, 12

Course Number: MTH 201/202

Dual Credit: No

Graduation Requirement: Mathematics

Prerequisites: IEP Determined

This course emphasizes intense mathematics instruction. The curriculum that is used focuses on whole number operations, fractions, decimals, and percentages as well as problem solving strategies that teach students how to apply the above skills. A high level of direct instruction and student participation is utilized in all Basic Math courses.

Pre-Algebra 1&2

Full Year, Grades 9, 10, 11, 12

Course Number: MTH 301/302

Dual Credit: No

Graduation Requirement: Mathematics

Prerequisites: IEP Determined

Essentials for Algebra integrates basic skills with pre-algebra and algebra lessons. This program expands the students' basic skills knowledge to becoming firm in the areas of solving a variety of equations using Algebra, using a coordinate system, probability, and Geometry skills. Students learn to apply these skills through activities, projects and in the math curriculum. A high level of direct instruction and student participation is utilized in all Basic Math courses.

Pre-Algebra 3&4

Full Year, Grades 9, 10, 11, 12

Course Number: MTH 401/402

Dual Credit: No

Graduation Requirement: Mathematics

Prerequisites: IEP Determined

Essentials for Algebra integrates basic skills with pre-algebra and algebra lessons. This program expands the students' basic skills knowledge to becoming firm in the areas of solving a variety of equations using Algebra, using a coordinate system, probability, and Geometry skills. Students learn to apply these skills through activities, projects and in the math curriculum. A high level of direct instruction and student participation is utilized in all Basic Math courses.

Algebra I 1&2

Full Year, Grades 9, 10, 11, 12
Course Number: MTH111/112
Dual Credit: No
Graduation Requirement: Mathematics
NCAA Qualified

Prerequisites: None

This yearlong course continues to develop both number sense and algebraic reasoning. Students work with concepts algebraically, numerically, graphically, and verbally. Expressions and equations begin the course with a large in-depth study of linear functions comprising most of the coursework. Nonlinear functions are explored in the latter half of the class.

Geometry 1&2

Full Year, Grades 9, 10, 11, 12
Course Number: MTH211/212
Dual Credit: No
Graduation Requirement: Mathematics
NCAA Qualified

Prerequisites: Completion of Algebra I 1&2

In this yearlong course students learn the relationships of points, lines, planes, triangles, quadrilaterals, polygons, and circles using the interactions of unique, proven properties. Three-dimensional shapes and trigonometry are also largely supported in this class. Logical thinking and proof, a form of reasoning to explain sequentially with valid rationales, are formally developed throughout the content.

Algebra II 1&2

Full Year, Grades 9, 10, 11, 12
Course Number: MTH311/312
Dual Credit: No
Graduation Requirement: Mathematics
NCAA Qualified

Prerequisites: Completion of Algebra I 1&2 and Geometry 1&2 OR teacher recommendation with a B+ or higher in Algebra 1 to take both Geometry and Algebra II concurrently.

This yearlong course continues the foundation laid by Algebra I. Students begin with complex solving and linear functions. However, the large portion of study is with nonlinear functions and their unique properties. To finish the coursework, students have an introduction to trigonometric functions.

Modern Algebra II 1&2

Full Year, Grades 9, 10, 11, 12
Course Number: MTH315/316
Dual Credit: No
Graduation Requirement: Mathematics
Prerequisites: Completion of Algebra I 1&2 and Geometry 1&2

The course focuses on algebraic understanding that is key for all students and builds that understanding through mathematical modeling using topics that are flexible and relevant to students. In addition to the study of linear and nonlinear functions, the course includes introductory data science and statistics. This course is equivalent to Algebra II.

Bridge to College Mathematics 1&2

Full Year, Grade 12
Course Number: MTH423/424
Dual Credit: No
Graduation Requirement: Mathematics
Prerequisites: Must have attempted Algebra II or Modern Algebra II

This course is designed for students scoring a Level 2 on the Smarter Balanced high school mathematics assessment. Students earning a "B" or better in the course are eligible to enter credit-bearing coursework in

any of the State of Washington Community and Technical Colleges. The course prepares students for entrance into non-calculus pathway introductory college level mathematics courses.

Precalculus 1&2 (WHS only)

Full Year, Grades 10, 11, 12

Course Number: MTH411/412

Dual Credit: No

Graduation Requirement: Mathematics

NCAA Qualified

Prerequisites: Successful completion of Algebra II 1&2

This year-long course will include a more detailed approach to the concepts of functions and an introduction to calculus. Five main functions – linear, quadratic, power, exponential and trigonometric functions are further extended algebraically, numerically, verbally, and graphically. Included are topics of probability, logarithms, complex numbers, functions, systems of equations, extensive study of trigonometry and vectors.

Precalculus, CiHS – CWU

Full Year, Grades 10, 11, 12

Course Number: MTH415/416

Dual Credit: Yes – College Course Completion

Graduation Requirement: Mathematics

NCAA Qualified (FPHS only)

Prerequisites: Successful completion of Algebra II or Modern Algebra II

This foundational course stresses algebraic and elementary function concepts together with the manipulative skills essential to the study of calculus. Emphasis is on trigonometric functions, vectors, systems of equations, the complex numbers, and an introduction to analytic geometry. Upon successful completion of this Full Year course, students can earn up to 10 credits in MATH 153 and MATH 154 from Central Washington University.

Aerospace Manufacturing 1&2

Full Year, Grades 10, 11, 12

Course Number: TEC213/214

Dual Credit: No

Graduation Requirement: CTE, Mathematics (3rd Year)

Prerequisites: None

CTE Program Area: Manufacturing and Design

Aerospace Manufacturing 1&2 provides an overview of mechanical behavior and characteristics of aerospace materials including metal alloys, polymers, ceramics, and composites. Students will receive hands-on experience in machining, testing, and assessing the properties and performance of aerospace materials. Seniors who complete this course and earn an industry-recognized certificate and will have an opportunity to interview local companies. *Industry Recognized Credential: Core Plus Aerospace/Advanced Manufacturing and OSHA 10 Hr. General Industry.*

Aerospace Manufacturing Advanced 3&4

Full Year, Grades 11, 12

Course Number: TEC313/314

Dual Credit: No

Graduation Requirement: CTE, Mathematics (3rd Year)

Prerequisites: Successful Completion of Aerospace Manufacturing 1&2

CTE Program Area: Manufacturing and Design

Aerospace Manufacturing Advanced 3&4 prepares students to apply basic engineering principles and technical skills in support of engineers and other professionals engaged in developing, manufacturing, and testing aircraft, spacecraft and their systems. This includes instruction in aircraft/spacecraft systems technology; design and testing. *Industry Recognized Credential: Core Plus Aerospace/Advanced Manufacturing and OSHA 10 Hr. General Industry.*

Construction Trades 1&2 (WHS only)

Full Year, Grades 10, 11, 12

Course Number: ARC111/112

Dual Credit: Yes – CTE Dual Credit

Graduation Requirement: CTE, Mathematics (3rd Year)

Prerequisites: Physically fit to lift and carry heavy objects.

CTE Program Area: Arts, Entertainment and Design

Construction Trades 1&2 develops skills for a high demand, high wage career in construction. Students learn through a variety of carpentry and construction related projects to challenge the skills they develop in the class. Topics covered include basic blueprint creation and reading, hand and power tool safety and use, framing, electrical wiring, and more. Students who earn a grade of 'C' (2.0) or better in this course can earn college credit. *Industry Recognized Credential: OSHA 10 Hr. General Industry.*

Consumer Math 1&2

Full Year, Grades 11, 12

Course Number: MTH601/602

Dual Credit: No

Graduation Requirement: Mathematics

Prerequisites: IEP Determined

This is a Full Year course designed to reinforce arithmetic skills for students through the study of consumer education topics. The course is intended to help students to develop into active, knowledgeable, and thoughtful consumers and to prepare them to engage in adult consumer activities with some skill and savvy, while understanding some of the mathematics that underlie their choices. Skills in the areas of whole numbers, fractions, decimals, percent, and Algebra are reviewed and taught as needed to deal with the consumer applications.

Financial Literacy 1&2

Full Year, Grades 11, 12

Course Number: BUS211/212

Dual Credit: Yes – CTE Dual Credit

Graduation Requirement: CTE, Mathematics (3rd Year)

Prerequisites: None

CTE Program Area: Business and Marketing

Financial Literacy 1&2 develops financial management skills to prepare students to make smart financial decisions. Topics include banking services, consumer credit, budgeting, saving, investing, stocks, insurance, retirement planning, how to buy a car and more. Students learn how to avoid financial mistakes and fix them if they do happen. Students who earn a grade of 'C' (2.0) or better in this course can earn college credit.

Introduction to Computer Science 1&2

Full Year, Grades 9, 10, 11, 12

Course Number: TEC113/114

Dual Credit: Yes – CTE Dual Credit

Graduation Requirement: CTE, Mathematics (3rd Year)

Prerequisites: None

CTE Program Area: Business and Marketing

Introduction to Computer Science 1&2 covers the foundations of computer science and basic programming, with an emphasis on helping students develop logical thinking and problem-solving skills. At a time when computer science affects how people work and live, Computer Science empowers students grades 9-12 to become creators, instead of merely consumers. Students who earn a grade of 'C' (2.0) or better in this course can earn college credit.

Introduction to Engineering & Design 1&2

Full Year, Grades 9, 10, 11, 12

Course Number: TEC111/112

Dual Credit: Yes – CTE Dual Credit

Graduation Requirement: CTE, Mathematics (3rd Year)

Prerequisites: None

CTE Program Area: Manufacturing and Design

IED explores the Problem-Solving Process utilizing math, science, leadership and engineering standards applied to hands-on projects. Students work both individually and in teams to design solutions to a variety of problems using 3-D modeling software, 3-D printers, laser engravers and more traditional shop equipment. Students who earn a grade of 'C' (2.0) or better in this course can earn college credit.

Statistics 1&2 (WHS only)

Full Year, Grades 10, 11, 12

Course Number: MTH413/414

Dual Credit: No

Graduation Requirement: Mathematics

*Prerequisites: Completion of or concurrent enrollment in Algebra II or Modern Algebra II**

In this introductory data analysis course, students collect data using surveys and experiments and interpret the data to make informed decisions. Topics include the use histograms, stem plots, time plots, and scatter plots to display data, using numbers such as median, mean, and standard deviation to describe data, and evaluating data distributions. Students examine relationships using correlations and least square regression.

**May be taken concurrent to Geometry with recommendation of department chair.*

Statistics, Society, and Decisions 1&2, CiHS – CWU

Full Year, Grade 12

Course Number: MTH645/646

Dual Credit: Yes – College Course Completion

Graduation Requirement: Mathematics

NCAA Qualified (FPHS only)

Prerequisites: A grade of "C" or better in Algebra II 1&2 or Modern Algebra II 1&2, or Precalculus 1&2

The statistical revolution has dramatically changed how our society makes decisions. Students will examine how statistics is used in diverse fields and current ethical and social issues surrounding the use of statistics and data. Upon successful completion of the course, students can earn up to five credits in MATH211 from Central Washington University.

Introduction to Data Science 1, 2 CiHS – UW (WHS only)

Full Year, Grades 11, 12

Course Number: MTH331/332

Dual Credit: Yes – College Course Completion

Graduation Requirement: Mathematics

Prerequisites: B or higher in Algebra II or Modern Algebra II or C or higher in Precalculus

This survey course introduces the essential elements of data science: data collection, management, curation, and cleaning; data summarization and visualization; and basic ideas of statistical inference and machine learning. Students gain hands-on experience through computing labs. Upon successful completion of the course, students can earn up to four credits in CSE 180 from University Washington.

AP Calculus A/B 1&2 (WHS Only)

Full Year, Grades 11, 12

Course Number: MTH631/632

Dual Credit: Yes – Credit by Exam

Graduation Requirement: Mathematics

Prerequisites: Successful completion of Precalculus and/or a 3 or higher on SBA

This year-long course explores the concepts, methods, and applications of differential and integral calculus. Students learn to determine expressions and values using mathematical procedures and rules, translate mathematical information from a single representation or across multiple representations, justifying reasoning and solutions, and use of correct notation, language, and mathematical conventions to communicate results or solutions. Students who earn a grade of 'C' (2.0) or better in this course can earn college credit.

AP Computer Science 1&2

Full Year, Grades 10, 11, 12

Course Number: TEC231/232

Dual Credit: Yes – Credit by Exam & CTE Dual Credit

Graduation Requirement: Mathematics (3rd Year), CTE

NCAA Qualified

Prerequisites: Introduction to Computer Science or teacher review.

CTE Program Area: Business and Marketing

AP Computer Science 1&2 focuses on the general writing and implementation of generic and customized programs to drive operating systems and that generally prepares individuals to apply the methods and procedures of software design and programming to software installation and maintenance. Includes instruction in software design, low- and high-level languages and program writing; program customization and linking; prototype testing; troubleshooting; and related aspects of operating systems and networks. Students who earn a grade of 'C' (2.0) or better in this course can earn college credit.

Calculus I 1&2, CiHS – CWU (FPHS only)

Full Year, Grades 11, 12

Course Number: MTH641/642

Dual Credit: Yes – College Course Completion

Graduation Requirement: Mathematics

NCAA Qualified

Prerequisites: A grade of "C" or better in Precalculus 1&2

Students will learn theory, techniques, and applications of differentiation and integration of the elementary functions. Upon successful completion of this Full Year course, students can earn up to 10 credits in MATH172 and MATH 173 from Central Washington University.

Mathematics in Modern World 1, 2 CiHS – CWU (WHS Only)

Full Year, Grades 11, 12

Course Number: MTH425/426

Dual Credit: Yes

Graduation Requirement: Mathematics

Prerequisites: A grade of "C" or better in Algebra 2

This course explores selected topics that highlight the development and application of mathematics and their influence on present society. Emphasis is placed on advancing critical thinking and quantitative reasoning skills through real-world context. Upon successful completion of the course, student can earn up to five credits in MATH101 from Central Washington University.

Science

Science courses prepare students for a variety of postsecondary education and career options. Washington state requires three years of high school science including two lab science courses. FPS has identified the following recommended course sequence: Biology, Physical Science, and Chemistry. By taking these courses, students will learn our science standards and be prepared for success on the state science exam (Washington Comprehensive Assessment of Science - WCAS). Students may choose a third-year science course aligned with their interests and postsecondary plans. Additional science classes are available for elective credit.

Biology 1&2

Full Year, Grade 9

Course Number: SCI111/112

Dual Credit: No

Graduation Requirement: Science (Lab)

NCAA Qualified

Prerequisites: None

This course investigates the characteristics of life and living things from the simplest through the most complex animals and plants. This course is specifically designed to meet Life Science portion of the Washington State K-12 Science Learning Standards.

Biology Advanced 1&2

Full Year, Grade 9

Course Number: SCI121/122

Dual Credit: No

Graduation Requirement: Science (Lab)

NCAA Qualified

Prerequisites: None

This course investigates the characteristics of life and living things from the simplest through the most complex animals and plants. This course is specifically designed to meet the Life Science portion of the Washington State K-12 Science Learning Standards.

Eco System Design 1&2

Full Year (2 period class), Grades 9, 10, 11, 12

Course Number: SCI621/622

Dual Credit: Yes – CTE Dual Credit

Graduation Requirement: CTE *and* Science (Biology, Lab)

NCAA Qualified

Prerequisites: None

CTE Program Area: Agriculture Sciences

Eco System Design 1&2 is a two-period class that studies environmental science and farming. Students are bussed to the farm every day for class. The course is designed as a hands-on course that digs into systems thinking, biology, and ecology concepts while learning practical skills of growing food, business, and leadership skills. Students work and earn outside every week throughout the school year. Students who earn a grade of 'C' (2.0) or better in this course can earn college credit.

Physical Science 1&2

Full Year, Grade 9, 10

Course Number: SCI211/212

Dual Credit: No

Graduation Requirement: Science (Lab)

NCAA Qualified

Prerequisites: None

This course uses laboratory practices to explore physical, earth, and space sciences. Through modeling, engineering, and design, students discover the interactions between matter and energy through the lens of physics, climate, geology, and astronomy.

Physical Science Advanced 1&2

Full Year, Grades 9, 10

Course Number: SCI221/222

Dual Credit: No

Graduation Requirement: Science (Lab)

NCAA Qualified

Prerequisites: placement by counselor/teacher recommendation

This course uses laboratory practices to explore physical, earth, and space sciences. Through modeling, engineering, and design, students discover the interactions between matter and energy through the lens of physics, climate, geology, and astronomy. This course prepares students to take college level science courses.

Chemistry 1&2

Full Year, Grades 10, 11, 12

Course Number: SCI311/312

Dual Credit: No

Graduation Requirement: Science (Lab)

NCAA Qualified

Prerequisites: Pass Biology and Physical Science or Advanced Physical Science

This course explores the composition, structure and properties of substances and the transformations that they undergo - matter and its interactions. The course includes some earth and space core ideas: earth's place in the universe, earth's systems, and human activity on earth.

Chemistry Advanced 1&2, CiHS – UW

Full Year, Grade 10, 11, 12

Course Number: SCI333/334

Dual Credit: Yes – College Course Completion

Graduation Requirement: Science (Lab)

NCAA Qualified

Prerequisites: Received a 'B' or better in Biology or Physical Science; Advanced Physical Science recommended

This course is an introduction to general chemistry, with an emphasis on developing problem solving skills. It covers basic concepts of chemistry, along with the mathematics required for quantitative problem-solving. Upon successful completion of the course, students can earn three credits in CHEM 110 from University of Washington.

Physics 1&2

Full Year, Grade 12

Course Number: SCI411/412

Dual Credit: No

Graduation Requirement: Science (Lab)

NCAA Qualified

Prerequisites: Chemistry, Advanced Chemistry and concurrently Algebra 2 or above

This course deals with matter and energy and their interactions. It provides practical experience in the application of math to understand how things work physically in our world and universe.

Principles of Biomedical Science 1&2

Full Year, Grades 9, 10, 11, 12

Course Number: SCI115/116

Dual Credit: Yes – CTE Dual Credit

Graduation Requirement: CTE, Science (Lab), Health

NCAA Qualified (FPHS only)

Prerequisites: None

CTE Program Area: Health Sciences

Explore the world of biomedical science through hands-on experiences. Students will analyze crime scene evidence, assist medical examiners, diagnose and treat patients, and respond to medical emergencies. They'll track disease outbreaks and collaborate with professionals to design solutions for local and global health challenges. Whether pursuing a career in healthcare or tackling real-world problems, students will develop critical thinking skills and gain practical experience in experimental design and scientific innovation. Students who earn a grade of 'C' (2.0) or better in this course can earn college credit.

Human Body Systems 1&2

Full Year, Grades 10, 11, 12

Course Number: SCI215/216

Dual Credit: Yes – CTE Dual Credit

Graduation Requirement: CTE, Science (Lab)

NCAA Qualified

Prerequisites: None

CTE Program Area: Health Sciences

Human Body Systems (Anatomy and Physiology) 1&2 prepares students to examine the interactions of body systems as they explore the structures of the human body and how they function to maintain homeostasis. Students build organs and tissues on a skeletal mannequin, work through interesting re-world cases, and play the roles of medical professionals to solve medical mysteries. Students who earn a grade of 'C' (2.0) or better in this course can earn college credit.

Intro to Physics 1&2, CiHS – CWU

Full Year, Grades 11, 12

Course Number: SCI413/414

Prerequisites: Completed Algebra II or Modern Algebra II

Dual Credit: Yes

Graduation Requirement: Science (Lab)

This course will provide an integrated experimental and analytical investigation of topics including kinematics, dynamics, rotational dynamics, wave mechanics, and conservation principles. This integrated lecture/laboratory course includes the analysis of physical systems using algebra and trigonometry, along with inquiry-based activities and experimental investigation. Upon successful completion of the course, students can earn up to 10 credits in PHYS 111 and PHYS 112 from Central Washington University.

Medical Interventions 1&2

Full Year, Grades 11, 12

Course Number: SCI315/316

Dual Credit: Yes – CTE Dual Credit

Graduation Requirement: CTE, Science (Lab)

NCAA Qualified

Prerequisites: Human Body Systems 1&2 or AP Biology 1&2 or AP Chemistry 1&2

CTE Program Area: Health Sciences

Students learn how to screen and fight infection; screen and evaluate the code in human DNA; prevent, diagnose, and treat cancer; and prevail when the organs of the body begin to fail. Through these scenarios, students are exposed to a range of interventions related to immunology, surgery, genetics, pharmacology, medical devices, and diagnostics. Students who earn a grade of 'C' (2.0) or better in this course can earn college credit.

Biomedical Innovation 1&2

Full Year, Grades 12

Course Number: SCI415/416

Dual Credit: Yes – CTE Dual Credit

Graduation Requirement: CTE, Science (Lab)

NCAA Qualified

Prerequisites: Principles of Biomedical Science 1&2, Human Body Systems 1&2, Medical Interventions 1&2

CTE Program Area: Health Sciences

Biomedical Innovation 1&2 is the final course in the Biomedical Science sequence of classes where students build on the knowledge and skills gained from previous courses to design innovative solutions for the most pressing health challenges of the 21st century. Students address topics ranging from public health and biomedical engineering to clinical medicine and physiology through an independent design project. Students who earn a grade of 'C' (2.0) or better in this course can earn college credit.

Astronomy

Semester, Grades 11, 12

Course Number: SCI635

Dual Credit: No

Graduation Requirement: Science (Lab)

NCAA Qualified

Prerequisites: Passed Physical Science

This is an elective science course on the study of space and the solar system. This includes the processes that have occurred and continue to occur that change our universe. Topics covered include the big bang theory; the life cycles of stars and galaxies; and the sun, the planets, and their moons.

Food Justice in Action 1&2

Full Year, Grades 10, 11, 12

Course Number: SCI651/652

Dual Credit: Yes – CTE Dual Credit

Graduation Requirement: CTE, Science (Lab) and English

NCAA Qualifies (FPHS Only) - English

Prerequisites: Intake application with Farm Staff

CTE Program Area: Agricultural Education

Food Justice in Action 1&2 is a two-period interdisciplinary program off-campus on the ten-acre school district farm. The course uses food justice as the starting place for conversations, reading, writing, and critically engaging with relevant social/environmental issues and application of real-world skills in action projects. Students must be willing and physically able to participate in required outdoor farm work in varying weather conditions, as outdoor participation is a graded component of the course. Students who earn a grade of 'C' (2.0) or better in this course can earn college credit.

Forensic Science 1&2 (FPHS only)

Full Year, Grade 10, 11, 12

Course Number: SCI641/642

Dual Credit: No

Graduation Requirement: Science (Lab)

NCAA Qualified

Prerequisites: None

Forensic Science is the application of biological, physical, and social sciences to analyze and evaluate physical evidence, human testimony, and criminal suspects. Students properly document a crime scene, collect evidence, conduct lab processes, and analyze evidence. In addition, students collect and present information on major criminals and cases.

Fundamentals of Biology 1&2, CiHS – CWU

Full Year, Grade 10, 11, 12

Course Number SCI135/136

Dual Credit: Yes

Graduation Requirement: Science (Lab)

NCCA?

Prerequisites: Received a 'B' or better in Biology 1&2, Advanced Biology 1&2, Chemistry 1&2, Advanced Chemistry 1&2 CiHS, or teacher recommendation

This course focuses on exploration through scientific inquiry and core biological principles from molecular to ecosystems levels, with applications to humans, society, and the environment. Upon successful completion of the course, students can earn up to 5 credits in BIO 101 from Central Washington University.

Global Challenges 1&2 (WHS only)

Full Year, Grades 9, 10, 11, 12

Course Number: SCI611/612

Dual Credit: Yes – CTE Dual Credit

Graduation Requirement: CTE, Science (Lab)

NCAA Qualified

Prerequisites: None

CTE Program Area: Manufacturing and Design

Global Challenges 1&2 explores the most pressing environmental and social issues of the 21st century. Students are encouraged to problem-solve, critically analyze, and debate topics ranging from climate change, species loss, pollution, and the food system to design locally relevant solutions to solve global issues. Students who earn a grade of 'C' (2.0) or better in this course can earn college credit.

Marine Biology

Semester, Grades 11,12

Course Number: SCI633

Dual Credit: No

Graduation Requirement: Science (Lab)

NCAA Qualified

Prerequisites: Algebra 1&2 and Biology 1&2

This is an elective science course investigating the ocean environment. The adaptations, interactions, classification, structure, and function of marine organisms as well as the influence of their habitat on these organisms will be emphasized. Topics covered: The role of the marine environment, human impacts on the marine environment, and how the economy depends on the ocean.

Social Studies

Franklin Pierce Schools require high school graduates to successfully complete three credits of social studies including coursework in World History (.5), U.S. History (1.0), Contemporary World Problems (CWP) or Ethnic Studies (.5), Civics (.5), and an additional social studies elective (.5). Additional social studies classes are available for students to take for elective credit.

Advanced Placement Human Geography 1&2 (FPHS only)

Full Year, Grade 9, 10, 11, 12

Course Number: SST131/132

Dual Credit: Yes - Credit by Exam

Graduation Requirement: Social Studies – CWP/Elective

NCAA Qualified

Prerequisites: None

This course introduces the systematic study of patterns and processes that have shaped human understanding, use, and alteration of Earth's surface. Students employ spatial concepts and landscape analysis to examine socioeconomic organization and its environmental consequences, learning methods and tools geographers use in their work. APHG may be used to satisfy the one semester CWP Graduation Requirement.

Introduction to Psychology

Semester, Grades 9, 10, 11

Course Number: SST630

Dual Credit: No

Graduation Requirement: Social Studies – Elective

NCAA Qualified

Prerequisites: None

Use psychology to better understand your own life right now, including how adolescent brain development changes you, how groups affect behavior, how attractions works, and strategies to make you a better student. At the end of the semester, you'll complete a project exploring a specific career in psychology and plan what to do in high school to achieve that path.

Voices of the Pacific Northwest (WHS Only)

Semester, Grades 9, 10, 11, 12

Course Number: SST612

Dual Credit: No

Graduation Requirement: Social Studies - Elective

Prerequisites: None

NCAA Qualified

Students will explore the history of Washington state and the Tacoma area with a focus on the experiences of historically marginalized communities, including Indigenous communities past, present, and future. Topics will include the impacts of migration, immigration, forced displacement, economics, environment, and legislation. *Meets the Washington State History Graduation Requirement for students who did not meet this requirement in middle school.*

Washington State History (FPHS Only)

Semester, Grades 9, 10, 11, 12

Course Number: SST611

Dual Credit: No

Graduation Requirement: Social Studies – Elective

NCAA Qualified

Prerequisites: None

Students examine Washington state from pre-European contact to the present, including an examination of the state constitution and key treaties, popular and tribal sovereignty issues. Through additional study of

migration, differing cultural experiences, and human interactions with the environment, students develop enduring understandings in civics, economics, geography, and history. *Meets the Washington State History Graduation Requirement for students who did not meet this requirement in middle school.*

AP World History 1&2 (FPHS only)

Full Year, Grade 10

Course Number: SST231/232

Dual Credit: Yes — Credit by Exam

Graduation Requirement: Social Studies – World History

NCAA Qualified

Prerequisites: None

Students will investigate significant events, individuals, and developments from 1200 to the present by analyzing primary and secondary sources and refining historical argument and reasoning skills. This course is for those looking for a more in-depth analysis of historical concepts such as cultural and social interactions, economic systems, governance, and technology.

World History 1200 – 1800 CE (FPHS only)

Semester, Grade 10

Course Number: SST211

Dual Credit: No

Graduation Requirement: Social Studies – Elective

Prerequisites: None

Students will examine the impact of major events of the time period, including trade, disease, socio-political revolutions, and religion. They will analyze the political power of civilizations and learn about how geography and environmental adaptation shaped societies, as well as first contact between Europeans and the Indigenous peoples of the Americas.

World History 1800 CE – Present Day (FPHS only)

Semester, Grade 10

Course Number: SST212

Dual Credit: No

Graduation Requirement: Social Studies – World History

Prerequisites: None

Students will study events of modern and contemporary history to understand our world. They will examine the motivations and impacts of imperialism, dictatorships, nationalism, specifically their role in World Wars I & II. They will also study The Cold War and its impact on foreign relations. Finally, students will evaluate solutions to contemporary world issues.

Culture and History of Latin America for Heritage Speakers (FPHS only)

Semester, Grades 10, 11, 12

Course Number: SST218

Dual Credit: No

Graduation Requirement: Social Studies – World History

Prerequisites: Successful completion of Spanish for Heritage Speakers OR language proficiency score of intermediate-mid or higher on Spanish STAMP test OR teacher interview

This class explores the major global historical, cultural, and ideological forces that have shaped and continue to inform Latin America and Chicano America. Themes include social structures, politics, interactions with the environment, culture, religion, and trade in and among societies.

World History Topics: Industrialization to Cold War (WHS only)

Semester, Grade 10, 11, 12

Course Number: SST215

Dual Credit: No

Graduation Requirement: Social Studies – World History

NCAA Qualified

Prerequisites: None

Students will deepen their understanding of social studies on a global scale with a focus on modern world history. Students will explore major themes and developments that shaped the modern world, including imperialism, industrialization, World War I, World War II, and the Russian Revolution.

World History Topics: History of Asia and the Pacific Islands (WHS only)

Semester, Grades 10, 11, 12

Course Number: SST213

Dual Credit: No

Graduation Requirement: Social Studies – World History

NCAA Qualified

Prerequisites: None

Addressing the culture, history, and geography of different regions in Asia and Oceania from 1450 to the present, students explore differences in regional histories and the interaction of these cultures with other regions. Major themes include an exploration of religion and culture, economic patterns in each region, the legacy of colonization, and political changes over time.

World History Topics: Latin American History (WHS only)

Semester, Grades 10, 11, 12

Course Number SST214

Dual Credit: No

Graduation Requirement: Social Studies – History

NCAA Qualified

Prerequisites: None

The course addresses Latin American culture, history, and geography of different regions from 1450 to the present. Major themes include an exploration of indigenous communities from the 1400s-1700, religion and culture, economic patterns in each region, the legacy of colonization, and social transformations.

World History from 1500 1&2, CiHS – EWU (WHS only)

Full Year, Grade 10

Course Number: SST233/234

Dual Credit: Yes — College Course Completion

Graduation Requirement: Social Studies – World History

NCAA Qualified

Prerequisites: None

The course focuses on distinct cultural traditions in the Americas, Asia, The Pacific, Europe, and Africa. Themes include social structures, politics, interactions with the environment, culture, religion, and trade in and among societies from 1450 to present. Upon successful completion of the course, students can earn up to five credits in HIST103 from Eastern Washington University.

Sociology 1&2 (FPHS only)

Full Year, Grades 10, 11, 12

Course Number: SST615/616

Dual Credit: No

Graduation Requirement: Social Studies – Elective

NCAA Qualified

Prerequisites: None

Sociology is the study of social behavior and how different aspects of society impact individuals. In this course, students overview several different topics in Sociology: family, politics, education, race, gender, and social classes.

Street Law (FPHS only)

Semester, Grade 10, 11, 12

Course Number: SST619

Dual Credit: No

Graduation Requirement: Social Studies – Elective

NCAA Qualified

Prerequisites: None

Street Law examines the workings of the U.S. criminal and civil justice systems, including providing an understanding of civil and criminal law and the legal process, the structure and procedures of courts, and the role of various legal or judicial agencies.

United States History 1&2

Full Year, Grade 11

Course Number: SST311/312

Dual Credit: No

Graduation Requirement: Social Studies – United States History

NCAA Qualified

Prerequisites: None

In eleventh grade, students have the intellectual and social capacity to deepen their study of history. Students explore major themes and topics in US History from a variety of perspectives, from Reconstruction forward.

United States History to 1877, CiHS – EWU

Semester, Grade 11

Course Number: SST333

Dual Credit: Yes — College Course Completion

Graduation Requirement: Social Studies – United States History

NCAA Qualified

Prerequisites: None

This course examines the changes and continuities of early American history from the development of colonial societies to the end of Reconstruction. Following a chronological timeline, students evaluate and discuss historical voices in national events such as the American Revolution and the Civil War. Students examine primary and/or secondary sources to produce a research project. Upon successful completion of the course, students can earn up to five credits in HIST111 from Eastern Washington University.

United States History since 1877, CiHS – EWU

Semester, Grade 11

Course Number: SST334

Dual Credit: Yes — College Course Completion

Graduation Requirement: Social Studies – United States History

NCAA Qualified

Prerequisites: None

This course examines changes and continuities of modern American history from the Reconstruction era to the present day. Following a chronological timeline, students evaluate and discuss historical voices in national events such as Progressivism, World War II, the Civil Rights Movement, and globalization. Students examine secondary and/or primary sources to produce a research project. Upon successful completion of the course, students can earn up to five credits in HIST112 from Eastern Washington University.

Psychology 1&2, CiHS – EWU

Full Year, Grades 11, 12

Course Number: SST635/636

Dual Credit: Yes — College Course Completion

Graduation Requirement: Social Studies – Elective

NCAA Qualified

Prerequisites: None

This course includes a general introduction to psychology as the scientific study of behavior and thought; an overview of the areas of psychology and their development; methods in psychology; biological, sensory and developmental influences on behavior; physiological and cognitive components of behavior; theories of learning; a survey of theories of normal and abnormal behavior; principles of psychotherapy; personality

theory and testing; and social influences. Upon successful completion of the course, students can earn up to 5 credits in PSYC100 from Eastern Washington University.

Civics

Semester, Grade 12

Course Number: SST411

Dual Credit: No

Graduation Requirement: Social Studies – Civics

NCAA Qualified

Prerequisites: None

In Civics, students examine local, state, tribal, and national government and how the state and federal constitutions govern the rights and responsibilities of all residents and citizens in Washington and the rest of the United States. This course fulfills the Washington State stand-alone Civics Graduation Requirement, supporting graduates' readiness to become active citizens and leaders of their communities.

Contemporary World Problems

Semester, Grade 12

Course Number: SST412

Dual Credit: No

Graduation Requirement: Social Studies – CWP

NCAA Qualified

Prerequisites: None

In CWP, students examine global themes rooted in environmental issues, economic development, human rights, and civic action and responsibility, by examining current events and primary documents from around the world. Students should graduate ready to become active citizens and leaders of their communities, the nation, and the world.

Ethnic Studies I

Semester, Grades 11, 12

Course Number: SST617

Dual Credit: No

Graduation Requirement: Social Studies – CWP

NCAA Qualified

Prerequisites: None

Ethnic Studies focuses on the experiences of Native Americans, African Americans, Asian Americans, Latinxs, and Chicanxs, and other racialized people in the US. The course examines how race and racism have been, and continue to be, central to shaping, understanding, and reacting to American society. Students gain consciousness about their personal connections to local and national history, and of their own potential as agents of social justice, civic responsibility, and cultural change.

Ethnic Studies II

Semester, Grade 12

Course Number: SST618

Dual Credit: No

Graduation Requirement: Social Studies – Elective

NCAA Qualified

Prerequisites: Ethnic Studies I

Ethnic Studies II deepens students' understanding of how race and racism have been, and continue to be, central to shaping, understanding, and reacting to American society. Students continue to explore how these ideas create and concentrate economic, political, and social power, and how this in turn leads to inequalities. Students create a community action project highlighting their connections to local and national history.

Politics and Government 1&2, CiHS – EWU

Full Year, Grade 12

Course Number: SST433/434

Dual Credit: Yes — College Course Completion
Graduation Requirement: Social Studies – Civics/CWP

NCAA Qualified

Prerequisites: None

This course is an introduction to the workings of the United States government from an historical, theoretical, and institutional point of view. Subjects of study include the founding of the United States, federalism, civil rights and civil liberties, political parties and interest groups, and American political institutions such as Congress, the Presidency, and the Judiciary. The course also addresses fundamental concepts such as power, ideology, and the citizen role in democratic politics. Upon successful completion of the course, students can earn up to 5 credits in POLI100 from Eastern Washington University.

Special Education

Basic Math 1&2

Full Year, Grades 9, 10, 11, 12
Course Number: MTH 101/102

Dual Credit: No

Graduation Requirement: Mathematics

Prerequisites: IEP determined

This course emphasizes intense mathematics instruction. The curriculum that is used focuses on whole number operations, fractions, decimals, and percentages as well as problem solving strategies that teach students how to apply the above skills. A high level of direct instruction and student participation is utilized in all Basic Math courses.

Basic Math 3&4

Full Year, Grades 9, 10, 11, 12
Course Number: MTH 201/202

Dual Credit: No

Graduation Requirement: Mathematics

Prerequisites: IEP determined

This course emphasizes intense mathematics instruction. The curriculum that is used focuses on whole number operations, fractions, decimals, and percentages as well as problem solving strategies that teach students how to apply the above skills. A high level of direct instruction and student participation is utilized in all Basic Math courses.

Community Based Learning 1&2

Full Year, Grades 10, 11, 12
Course Number: ELE301/302

Dual Credit: No

Graduation Requirement: Elective

Prerequisites: Student, parent, & teacher permission, IEP determined

The Community Based Teaching (CBT) Program is a competency-based, experiential learning environment that creates functional citizens with necessary skills for employment, education enhancement, and life competencies for the 21st century. Learners become familiar with basic occupational skills, teamwork, positive communications, positive human relations, job market, leadership, and self-improvement skills in academic and occupational settings (Special Education Pre-qualification).

Consumer Math 1&2

Full Year, Grades 11, 12
Course Number: MTH601/602

Dual Credit: No

Graduation Requirement: Mathematics

Prerequisites: IEP Determined

This is a Full Year course designed to reinforce arithmetic skills for students through the study of consumer education topics. The course is intended to help students to develop into active, knowledgeable, and thoughtful consumers and to prepare them to engage in adult consumer activities with some skill and savvy, while understanding some of the mathematics that underlie their choices. Skills in the areas of whole numbers, fractions, decimals, percent, and algebra are reviewed and taught as needed to deal with the consumer applications.

Language Arts 1&2

Full Year, Grades 9, 10, 11, 12

Course Numbers: Grade 9=ENG101/102
 Grade 10=ENG 201/202
 Grade 11=ENG 301/302
 Grade 12=ENG 401/402

Dual Credit: No

Graduation Requirement: English

Prerequisites: IEP determined

This course emphasizes intense writing and reading instruction. The Jane Schaeffer writing technique, Language! curriculum, and/or reasoning and writing curriculum will be used to strengthen literacy skills. A high level of direct instruction and student participation is utilized in all Language Arts courses.

Learning Strategies 1&2

Full Year, Grades 9, 10

Course Number: ELE103/104

Dual Credit: No

Graduation Requirement: Elective

Prerequisites: Student, parent, & teacher permission, IEP determined

This course provides students with essential skills to be successful and productive in the workplace with a focus on appropriate work habits, behavior, maintaining & securing employment, along with math & reading support is included. The course addresses, "What skills must I have to become an employable & effective worker?"

Learning Strategies Advanced 1&2

Full Year, Grades 11, 12

Course Number: ELE105/106

Dual Credit: No

Graduation Requirement: Elective

Prerequisites: Student, parent, & teacher permission, IEP determined

This course provides students with important skills needed to be successful and productive in the workplace, along with addressing, "What skills must I have to become an employable & effective worker?" Appropriate work habits, behavior, as well as maintaining & securing employment, are addressed along with reading & math instructional support.

Pre-Algebra 1&2

Full Year, Grades 9, 10, 11, 12

Course Number: MTH 301/302

Dual Credit: No

Graduation Requirement: Mathematics

Prerequisites: IEP determined

Essentials for Algebra integrates basic skills with pre-algebra and algebra lessons. This program expands the students' basic skills knowledge to becoming firm in the areas of solving a variety of equations using Algebra, using a coordinate system, probability, and Geometry skills. Students learn to apply these skills through activities, projects and in the math curriculum. A high level of direct instruction and student participation is utilized in all Basic Math courses.

Pre-Algebra 3&4

Full Year, Grades 9, 10, 11, 12
Course Number: MTH 401/402
Dual Credit: No

Graduation Requirement: Mathematics

Prerequisites: IEP determined

Essentials for Algebra integrates basic skills with pre-algebra and algebra lessons. This program expands the students' basic skills knowledge to become firm in the areas of solving a variety of equations using Algebra, using a coordinate system, probability, and Geometry skills. Students learn to apply these skills through activities, projects and in the math curriculum. A high level of direct instruction and student participation is utilized in all Basic Math courses.

Support Center I 1&2

Full Year, Grades 9, 10, 11, 12
Course Number: ELE201/202
Dual Credit: No

Graduation Requirement: Elective

Prerequisites: IEP determined

The Support Center (Phase I) is designed for students with moderate to severe disabilities. The program prepares students for post-high school living with integration of functional academics, work-related, and daily living skills. The course provides opportunities for hands on experiences and incorporates cooperative learning principles, develops self-advocacy skills and independence in all students, and addresses the critical competencies students need to be productive individuals. Students are active participants in the high school culture and will also attend general education classes.

Support Center II 1&2

Full Year, Grades 11, 12+
Course Number: ELE 203/204
Dual Credit: No

Graduation Requirement: Elective

Prerequisites: IEP determined

Students in their last 3-4 years of high school, ages 18-21 years, focus on obtaining postsecondary employment, residential, and leisure options in Phase II (Support Center II). School reflects the student's future as much as possible. Students participate in community activities rather than high school events, developing linkages with adult agencies, securing options for postsecondary employment, and developing community supports.

Tools for Success 1&2

Full Year, Grades 9, 10, 11, 12
Course Number: ELE101/102
Dual Credit: No

Graduation Requirement: Elective

Prerequisites: Student, parent, & teacher permission, IEP determined

This course aims to support students with study and organizational skills while helping student practice and achieve self-advocacy.

World Language

In the World Language program, students demonstrate essential language skills needed to meet their basic needs and to communicate in real life situations through listening, speaking, reading, and writing. Additionally, students develop an understanding of the various cultures of the target language. Students learn through a variety of instructional strategies such as listening input, modeling, group work, working with technology, games, and simulations.

In the Spanish program, students who speak Spanish at home or have any degree of fluency and who are interested in improving their language skills should speak with a Spanish teacher or counselor for recommendations before enrolling.

Students must pass the first semester to continue to the next level at semester or get teacher permission to continue.

American Sign Language 1&2

Full Year, Grades 9, 10, 11, 12

Course Number: WRL111/112

Dual Credit: Yes – CTE Dual Credit

Graduation Requirement: CTE, World Language

NCAA Qualified

Prerequisites: None

CTE Program Area: Community Health

American Sign Language 1&2 course offers specialized and technical training in the field of Deaf studies and allows students opportunities to facilitate communication between Deaf and hearing people using American Sign Language (ASL). Students learn basic communication components and grammar of ASL, as well as becoming familiar with Deaf culture. Students who earn a 'B' (3.0) or better in this course can earn college credit through Seattle Central Community College.

American Sign Language 3&4

Full Year, Grades 10, 11, 12

Course Number: WRL113/114

Dual Credit: Yes – CTE Dual Credit

Graduation Requirement: CTE, World Language

NCAA Qualified

Prerequisites: Successful completion of American Sign Language 1&2.

CTE Program Area: Community Health

American Sign Language 3&4 prepares students for facilitating communication between Deaf and Hearing people using American Sign Language (ASL) in a variety of settings. Students learn communication components of ASL as well as content specific vocabulary in a variety of areas such as: medicine, law, and finance. ASL students also have opportunities to become participants in the Deaf community.

American Sign Language 5&6 (WHS only)

Full Year, Grades 11, 12

Course Number: WRL115/116

Dual Credit: No

Graduation Requirement: CTE, World Language

NCAA Qualified

Prerequisites: Successful completion of American Sign Language 1&2 and American Sign Language 3&4.

CTE Program Area: Community Health

American Sign Language 5&6 provides hands-on opportunities within the classroom setting in facilitating communication between Deaf and hearing people using ASL. Students explore various careers that utilize and examine services that are available for Deaf/hard-of-hearing individuals in their community. Students also research levels of professionalism, confidentiality, and the Code of Ethics for ASL Interpreters.

Japanese 1&2

Full Year, Grades 9, 10, 11, 12

Course Number: WRL121/122

Dual Credit: No

Graduation Requirement: World Language

NCAA Qualified

Prerequisites: None

This course covers the basics of the Japanese language including self-introduction, family-introduction, and school life. Students develop skills in speaking, listening, reading, and writing Hiragana, Katakana and Kanji. The course also covers Japanese culture for each topic. In addition, students develop 21st century skills through the classroom activities.

Japanese 3&4

Full Year, Grades 10, 11, 12

Course Number: WRL123/124

Dual Credit: No

Graduation Requirement: World Language

NCAA Qualified

Prerequisites: Successful completion of Japanese 1&2 or tested out of certain years of Japanese. (i.e. heritage speakers of Japanese)

Japanese 3&4 is designed to utilize and build upon the knowledge gained in Japanese 1&2. Students continue building a foundation of the Japanese language. The topics are similar to the ones covered in Japanese 1&2, such as family, daily schedule, school life, weather, going to a restaurant, shopping, etc. Throughout the course students nurture additional 21st century skills to flourish in the world.

Japanese 5&6

Full Year, Grades 11, 12

Course Number: WRL125/126

Dual Credit: No

Graduation Requirement: World Language

NCAA Qualified

Prerequisites: Successful completion of Japanese 3&4 or tested out of certain years of Japanese. (i.e. heritage speakers of Japanese)

Japanese 5&6 students continue building proficiency in the Japanese language with a focus on improving fluency in conversations. Students learn vocabulary, kanji, and grammar that allow them to participate in the Japanese language community naturally and authentically. Students take part in language exchanges, Japanese linguistic and cultural events. Throughout the course students nurture additional 21st century skills to flourish in the world.

Japanese 7&8

Full Year, Grades 11, 12

Course Number: WRL127/128

Dual Credit: No

Graduation Requirement: World Language

Prerequisites: Successful completion of Japanese 5&6 or tested out of certain years of Japanese. (i.e. heritage speakers of Japanese)

Japanese 7&8 students will be completing higher-level coursework to increase fluency by building on vocabulary, kanji, and grammar skills so that they can engage in the Japanese language community in an authentic way. Students will continue to explore the evolving landscape of Japanese culture. Throughout the course, students will nurture additional 21st century skills to flourish within the world.

Spanish 1&2

Full Year, Grades 9, 10, 11, 12

Course Number: WRL101/102

Dual Credit: No
Graduation Requirement: World Language

NCAA Qualified

Prerequisites: None

The objective in the first two years of Spanish classes is to learn to understand and speak the language. Its outcome is the ability to understand the spoken language, to speak competently, to read without translation and to write adequately (Novice Mid ACTFL level). Students will be exposed to the cultures represented by the language. Speaking and participation are emphasized.

Spanish 3&4

Full Year, Grades 10, 11, 12
Course Number: WRL103/104
Dual Credit: No

Graduation Requirement: World Language

NCAA Qualified

Prerequisites: Successful completion of Spanish 1&2 or tested out of certain years of Spanish. (i.e. heritage speakers of Spanish)

The objective in the first two years of Spanish classes is to learn to understand and speak the language. Its outcome is the ability to understand the spoken language, to speak competently, to read without translation, and to write adequately (Novice High ACTFL level). Students will be exposed to the cultures represented by the language. Speaking and participation are emphasized.

Spanish 5&6

Full Year, Grades 10, 11, 12
Course Number: WRL105/106
Dual Credit: No
Graduation Requirement: World Language

NCAA Qualified

Prerequisites: Successful completion of Spanish 3&4 or have tested out of certain years of Spanish. (i.e. heritage speakers of Spanish)

In a third year of study, students continue the development of oral competence and improve skills in vocabulary building, reading, and writing. A variety of contemporary literature will be introduced. Heritage Spanish speakers may enroll to develop literacy skills and enhance the immersion experience.

Spanish 7&8

Full Year, Grades 11, 12
Course Number: WRL107/108
Dual Credit: No
Graduation Requirement: World Language

NCAA Qualified

Prerequisites: Successful completion of Spanish 5&6, intermediate 2 or higher language proficiency or have tested out of certain years of Spanish. (i.e. heritage speakers of Spanish)

In a fourth year of study, students continue the development of oral competence and improve writing skills with an emphasis on authentic literature. Heritage Spanish speakers may enroll as an alternative to AP Spanish Language.

Spanish for Heritage Speakers 1&2 (FPHS only)

Full Year, Grades 9, 10, 11, 12
Course Number: WRL201/202
Dual Credit: No
Graduation Requirement: World Language

NCAA Qualified

Prerequisites: None, for heritage speakers

A heritage speaker is someone whose home language is Spanish. This class will help heritage speakers further develop reading and writing skills in Spanish while learning more about the Spanish-speaking culture. One of

the main goals in this class is to improve Spanish communication skills across diverse contexts. Students will read and analyze works of a variety of Spanish authors.

AP Spanish Language 1&2

Full Year, Grades 10, 11, 12

Course Number: WRL231/232

Dual Credit: No

Graduation Requirement: World Language

NCAA Qualified (FPHS Only)

Prerequisites: Successful completion of a minimum three years of Spanish language study or permission of teacher/counselor.

In AP Spanish, students complete 300-level college coursework as they prepare to take the AP Exam. Students refine skills and knowledge needed to communicate at or above Intermediate High ACTFL level. College credit depends on AP exam score and individual college standards.

Additional Electives

Leadership 1&2

Full Year, Grades 9, 10, 11, 12

Course Number: ELE231/232

Dual Credit: No

Graduation Requirement: Elective

Prerequisites:

FPHS - ASB executive officers are required to enroll. Class officers are strongly encouraged to enroll. All other students are selected through an application process.

WHS – Grades 11, 12; Subject to Advisor approval

This course provides students the opportunity to develop and grow as leaders using various leadership models to implement a variety of student-led activities and events on campus. Students will develop their leadership skills including decision-making, goal setting, event management, and process analysis. Students may participate in SPSL Association of Student Councils and Association of Washington Student Leaders (AWSL), providing the opportunity to network with other student leaders around the state.

Advanced Leadership 3&4, CiHS – EWU (WHS only)

Full Year, Grade 12

Course Number: ELE435/436

Dual Credit: No

Graduation Requirement: Elective

Prerequisites: Advanced Leadership 1,2; Instructor Approval

Advanced Leadership builds upon the student's understanding and experience in Leadership 1&2 as they lead core student activities on campus. Students will create a portfolio reflecting their growth and application of the six core foundations of learning and consider various leadership opportunities beyond high school. Students can earn three college credits in CSBS200 from Eastern Washington University.

Office Assistants – Counseling and Career Center, Library Office, and Main Office

Semester, Grades 11,12

Course Number: see below

Dual Credit: No

Graduation Requirement: Elective

Prerequisites: see below

Students are provided an opportunity to learn professional office skills by supporting the daily operations of school office staff. Students will greet students and families in-person and on the phone, provide information, take messages, and other general office procedures. Students will interact in a positive and professional manner with an attention to detail and confidentiality. Students may earn .5 elective credit for a maximum of two semesters (1.0 credit) in their high school career as an office assistant and grading for this course is Pass/Fail.

Counseling and Career Center Assistant

Course Number: CIE103 (Sem1), 104 (Sem2)

Prerequisites: Counselor permission.

Library Office Assistant

Course Number: CIE105 (Sem1), 106 (Sem2)

Prerequisites: Library/Media Tech permission.

Main Office Assistant

Course Number: CIE101 (Sem1), 102 (Sem2)

Prerequisites: Administrator/Office Manager permission.

Teacher Assistant (TA)

Semester, Grades 11, 12

Course Number: CIE107 (Sem1), CIE108 (Sem2)

Dual Credit: No

Graduation Requirement: Elective

Prerequisites: Teacher permission

This class provides students with experience working with administrators, teachers, and office personnel. Students assist teachers with classroom tasks or projects. Assistants are expected to demonstrate good citizenship, respect for others, and maintain confidentiality. Regular attendance is required. TAs must be a role model for other students and work in the classroom/designated workspace unless given a specific task otherwise. A student may earn .5 elective credit for a maximum of two semesters (1.0 credit) in their high school career as a TA and grading for this course is Pass/Fail.

Restorative Justice Center Student Advocate (WHS Only)

Semester or Full Year, Grades 10, 11, 12

Course Number: CIE201/202

Dual Credit: No

Graduation Requirement: Elective

Prerequisites: None

In this course, students will staff the Restorative Justice Center. In addition to deepening their learning of Restorative Practices, students will serve in campus leadership roles proactively facilitating community building activities, peer mentoring and coaching, and responsive restorative circles and conferences with their peers and staff on campus. Students will integrate elements of social justice and transformation to support our campus and community.

Pierce County Skills Center



The Pierce County Skills Center offers year-long Career and Technical Education programs designed to give students an in-depth look into specific career fields. PCSC courses are taught by industry professionals in state-of-the-art facilities. PCSC programs earn high school and college credit and prepare students to successfully transition to postsecondary education and the workforce. Additional details about PCSC programs can be viewed [here](https://www.pscs.bethelsd.org) (pscs.bethelsd.org)

Application process for 2026-27 school year:

- Applications will be accepted February 23, 2026 through March 2, 2026
- Applications received during the February 23-March 2 window will be used to fill PCSC programs by random lottery until programs are full
- Applications not selected will be used to create program waiting lists
- Applications received after March 2 will be placed in programs on a space-available basis or added to the bottom of the waiting list

To access the PCSC online application, visit our website at www.pcskillscenter.org.

2026-2027 Program Descriptions

Advanced Manufacturing (Composites, Machining, Mechatronics/Pre-Engineering)

Composites

The Advanced Manufacturing - Composites program is designed to prepare students to fabricate, assemble and repair composite materials. Students design, build and repair composite parts and assemblies using the same techniques as our industry partners. Year 2 option available with instructor permission.

Certifications: First Aid/CPR, Locally-Developed Manufacturing Certificate

Credit Equivalency: Technical/3rd Year Math - 1.5, Occupational Ed - 3.0 (Per Year)

Machining

The Advanced Manufacturing - Machining program is designed to teach hands-on skills, processes, and technologies used in the aerospace and manufacturing industry. Students will learn technical sketching, precision measurement, computer-aided design/programming, fabrication/assembly, welding, and computer-aided manufacturing. Year 2 option available with instructor permission.

Dual Credit: Up to 14 credits

Certifications: First Aid/CPR, OSHA 10, Locally-Developed Manufacturing Certificate

Credit Equivalency: Technical/3rd Year Math - 1.5, Occupational Ed - 3.0 (Per Year)

Mechatronics/Pre-Engineering

The Mechatronics/Pre-Engineering program is designed to train students in CAD, CNC, and programmable logic controller (PLC) programming and troubleshooting. Students will also learn to install, diagnose, maintain, modify, test, and calibrate electronic, electrical, and mechanical systems used in manufacturing support equipment and production machinery, including industrial robots. Year 2 option available with instructor permission.

Dual Credit: Up to 43 credits

Certifications: First Aid/CPR, OSHA 10, Locally-Developed Manufacturing Certificate

Credit Equivalency: Technical/3rd Year Math - 1.5, Occupational Ed - 3.0 (Per Year)

Automotive Technology

The Automotive Technology program is designed to train students for a variety of jobs within the automotive industry. Students will focus on maintenance and light repair in an environment set up just like an automotive

service department. Students will service and diagnose vehicles, complete tune-ups, conduct brake and suspension repairs, and perform wheel alignments. Year 2 option available with instructor permission.

Dual Credit: Up to 13 credits

Certifications: First Aid/CPR, ASE (varies - up to 10 certifications available), Valvoline, SP2

Credit Equivalency: Occupational Ed - 4.5 (Per Year)

Construction Trades

The Construction Trades program is a State of Washington approved pre-apprenticeship program designed to prepare students for direct entry into an apprenticeship by meeting rigorous academic and industry standards. This course covers both residential and commercial construction with an emphasis on job site safety through hands-on projects, guest speakers and field trips. Students will learn framing, roofing, blueprint reading, estimating costs, and site preparation. Students who meet ALL course competencies with a B or better will be granted preferred enrollment and advanced placement in the Carpenters-Employers Apprenticeship & Training Trust Fund. Year 2 option available with instructor permission.

Dual Credit: Up to 45 credits

Certifications: First Aid/CPR, Carpenters 1, 2 & 3, Forklift, OSHA 10, Pre-Apprenticeship Certificate

Credit Equivalency: Technical/3rd Year Math - 1.5, Occupational Ed - 3.0 (Per Year)

Criminal Justice

The Criminal Justice program is designed to prepare students with preliminary training for careers in law enforcement. Upon completion of this program, students will have a working knowledge of criminal law, policing procedures, forensics, and their application to the various divisions of the criminal justice system.

Dual Credit: Up to 17 credits

Certifications: FEMA Incident Command Systems 100, 200 & 700; First Aid/CPR

Credit Equivalency: Fitness & Conditioning Activities - 1.5, CWI or Civics - 1.5, Occupational Ed - 1.5 (Per Year)

Culinary Arts

The Culinary Arts program is designed to prepare students for a promising career in the food service or hospitality industry. Students will learn kitchen procedures, sanitation and safety, menu planning and costing, dining room service, baking/food preparation, and banquet and catering service taught by industry professionals in a state-of-the-art facility. Students will also assist in the operation of our on-site café, *The Summit Cafe*. Year 2 option available with instructor permission.

Dual Credit: Up to 42 credits

Certifications: WA State Food Handler's Permit, National ServeSafe Certification, First Aid/CPR

Credit Equivalency: Visual Arts-Sculpture - 1.0, Technical Science - 1.0, Occupational Ed - 2.5 (Per Year)

Electrical Trades

The Electrical Trades program is designed to train students in residential and commercial electrical codes, wiring and motor controls and electrical theory and blueprint reading. Using the NCCER curriculum, students also will learn to design and install traditional and alternative energy systems for industrial, commercial and residential buildings. Year 2 option available with instructor permission.

Dual Credit: 8 credits

Certifications: First Aid/CPR, OSHA 10

Credit Equivalency: Technical/3rd Year Math - 1.5, Occupational Ed - 3.0 (Per Year)

Fire Science & Emergency Services

The Fire Science & Emergency Services program is designed to prepare students for a career as a firefighter and other emergency services careers such as, EMT, fire investigator, and building investigator. Students will learn the academic requirements associated with being a firefighter including wildland firefighting. Students will use industry firefighting equipment such as hoses, turnout gear, SCBAs, and a working fire engine. Year 2 option available with instructor permission.

Dual Credit: Up to 17 credits

Certifications: First Aid/CPR, FEMA Incident Command Systems 100, 200 & 700, Wildland Firefighting

Credit Equivalency: Fitness & Conditioning Activities - 1.0, Technical Science - 1.0, Occupational Ed - 2.5 (Per Year)

Information Technology Services (ITS) & Cybersecurity

The ITS & Cybersecurity program is designed to provide students with a broad understanding of the installation, troubleshooting, and management of computers, hardware, and computer networks in alignment to industry standards. Students will also learn cybersecurity fundamentals and automation for factories using Programmable Logic Controllers (PLCs). Year 2 option available with instructor permission.

Dual Credit: Up to 52 credits

Certifications: A+, Network+, Security+, PC Pro, Ethical Hacker Pro, MCSE (Testing Fees May Apply)

Credit Equivalency: Technical/3rd Year Math - 1.5, Occupational Ed - 3.0 (Per Year)

Medical Assistant

Students in this two-year program will learn back office medical procedures, as well as, medical terminology, anatomy and physiology, and lab procedures. Students will also learn how to intake patients, record vital signs, prepare and administer medications as directed by a physician, collect and prepare laboratory specimens and tests, and perform venipuncture, blood work, and patient positioning. Students will participate in clinical training in hospitals, clinics, and doctors' offices. The class focuses on academic, technical skills, and employability practices. Students will develop personal and professional skills in the classroom that will transfer to the workplace. Transportation is required for clinicals. **Program Requirements:** Students must be a junior to enroll in this two-year certificate program. Students must pass a criminal background check.

Prerequisite: Successful completion of Biology or other related science class.

Dual Credit: Up to 25 credits

Certifications: First Aid/CPR, Medical Assistant Certification (after completing 2nd year), WA State HIV/AIDS Training

Credit Equivalency: Health - 1.5, Biology-Other - 1.5, Occupational Ed - 1.5 (Per Year)

Medical Careers (NA-C)

The Medical Careers program is designed to prepare students for initial certification as a Nursing Assistant (NA-C) as well as continued training in nursing. Students spend time in the classroom and in an assisted living facility learning many procedures for patient care including: taking blood pressure, temperature, pulse and respirations, as well as learning how to bathe, groom, feed, lift, exercise, and position patients. Transportation is required for clinicals. **Program Requirements:** Students must be a senior and pass a criminal background check.

Prerequisite: Successful completion of Biology or other related science class.

College in the High School Credits: 9 credits/**Dual Credit:** Up to 12 credits

Certifications: First Aid/CPR, Nursing Assistant Certification, WA State HIV/AIDS Training

Credit Equivalency: Health - 1.5, Biology-Other - 1.5, Occupational Ed - 1.5 (Per Year)

Pharmacy Technician

The Pharmacy Technician program introduces students to the skills needed for entry-level positions in retail, hospital or mail-order pharmacies. Students will learn how to process prescriptions, prepare IV medications, order and stock medications, as well as operate and troubleshoot automated drug dispensing systems. Students will also learn about disease, medication therapy, anatomy & physiology and medical terminology. Students who successfully complete the Year 1 program will earn their Pharmacy Assistant certification. Students who successfully complete the Year 1 and Year 2 program requirements will have the opportunity to take the Pharmacy Technician exam. Year 2 option available with instructor permission.

Prerequisite: Biology or other related science class.

Dual Credit: Up to 12 credits

Certifications: First Aid/CPR, Pharmacy Assistant, HIPAA, WA State HIV/AIDS

Credit Equivalency: Anatomy & Physiology - 1.0, Health - 1.0, Life Science - 1.0, Occupational Ed - 1.5 (Per Year)

Pre-Physical Therapy & Sports Medicine

The Pre-Physical Therapy & Sports Medicine program is designed to provide students with hands-on experience in evaluation, acute care and rehabilitation skills. This program will also teach students about Kinesiology (the study of human movement), human anatomy and physiology, ethics, and taping procedures. This course is a first stop for students interested in becoming a certified athletic trainer, strength and conditioning coach, physical therapy assistant or physical therapist. Year 2 option available with instructor permission.

Prerequisite: *Biology or other related science class.*

Dual Credit: Up to 20 Credits

Certifications: First Aid/CPR

Credit Equivalency: Anatomy & Physiology - 1.5, Fitness & Conditioning Activities - 1.5, Occupational Ed - 1.5 (Per Year)

Pre-Veterinary Technology

The Pre-Veterinary Technology program is designed to prepare students for a career in animal healthcare and provides a foundation for employment in fields such as veterinary medicine, agriculture, research, and fish and wildlife, as well as, training in grooming services. Students will gain experience through classroom activities and daily handling of resident animals in a realistic setting that models worksites in the industry. Year 2 option available with instructor permission.

Prerequisite: *Successful completion of high school Biology or equivalent class.*

Dual Credit: Up to 7 credits

Certification: First Aid/CPR

Credit Equivalency: Zoology - 1.5, Occupational Ed - 3.0 (Per Year)

Video Game Development/AP Computer Science Principles

The Video Game Development program is designed to teach students to create video games using trigonometry and higher math, computer programming in C#, as well as 2D and 3D animation. This course will prepare students with the skills necessary for the video game industry's need for qualified video game programmers and artists. Year 2 option available with instructor permission.

Prerequisite: *Successful completion of Algebra I*

Dual/College Credit: Up to 5 credits. Students will also take the Advanced Placement Computer Science Principles exam

Certifications: Unity, First Aid/CPR

Credit Equivalency: Technical/3rd Year Math - 1.5, Occupational Ed - 3.0 (Per Year)

COUNSELING AND CAREER SERVICES

Franklin Pierce Schools Counseling Programs provide guidance and support to enable all students, regardless of individual differences, to acquire the self-knowledge, academic, postsecondary planning competencies necessary to succeed and contribute in a changing society.

Franklin Pierce High School

Counselors are assigned to specific sections of the alphabet. Therefore, they work with students in all grades. For more information please contact:

Jaime Fineman-McKinney	Counselor A-E	253-298-3902	jfinemanmckinney@fpschools.org
Letysha Plaskett-Rosario	Counselor F-L	253-298-3953	lplaskettrosario@fpschools.org
Aly Nelko	Counselor M-R	253-298-3820	anelko@fpschools.org
JulieAnn Detweiler	Counselor S-Z/Dept. Head	253-298-3901	jdetweiler@fpschools.org
Stephanie Davis	Student Data Manager	253-298-3977	stdavis@fpschools.org
Aimee Bruinsma	College & Career Specialist	253-298-3934	abruinsma@fpschools.org
Avamua Tews	Cslg. Office/Registration Coord.	253-298-3834	atews@fpschools.org

The FPHS Guidance, Counseling and Career Department hours are 7:00am – 3:15pm.

Parents are encouraged to contact their child’s counselor to schedule an appointment with the counselor and/or to arrange parent teacher conferences. Counseling Office: 253-298-3834

Washington High School

Counselors are assigned to specific sections of the alphabet. Therefore, they work with students in all grades. For more information please contact:

LaGhea Jackson	Counselor A-G	253-298-4861	jzapanta@fpschools.org
Eduardo Ortiz	Counselor H-O/Dept. Head	253-298-4736	eortiz@fpschools.org
Matthew Summers-Smith	Counselor P-Z	253-298-4735	msummerssmith@fpschools.org
Anne Plutko	Grad/Running Start Coach	253-298-4718	aplutko@fpschools.org
Bonnie Wiklund	Student Data Manager	253-298-4713	bwiklund@fpschools.org
Sheryl Moore	College & Career Specialist	253-298-4871	smoore@fpschools.org
Kimberli Pacheco	Cslg. Office/Registration Coord.	253-298-4734	kpacheco@fpschools.org

The WHS Guidance, Counseling and Career Department hours are 7:00am – 2:30pm

Parents are encouraged to contact their child’s counselor to schedule an appointment with the counselor and/or to arrange parent teacher conferences. Counseling Office: 253-298-4734

GATES HIGH SCHOOL

GATES High School is a school of choice in Franklin Pierce Schools for high school students. GATES provides a small learning environment with a focus on meeting individual student needs. Staff prioritize positive relationships with students. Coursework focuses on meaningful and engaging work. In a positive, safe environment, students feel secure to be who they are while respecting the individuality of others. Students are encouraged to and supported in taking responsibility for their lives and to formulate educational plans that direct them toward success during and after high school.



GATES HS provides culturally responsive competency-based learning opportunities for students to meet standards in high school courses. GATES' classes are of a traditional nature within a smaller environment - there are typically less than 15 students in a class. All work at GATES High School must be completed at a mastery level of at least 70% to receive credit at the end of a class. Currently, Graduation Requirements are the same and students earn the same diploma that they would at an FPS comprehensive high school.

GATES runs on an eight-term schedule within four Learning Cycles per year. Each Learning Cycle is the equivalent of an academic semester. In each cycle, students are enrolled in five classes plus an advisory each day. Students can earn a minimum of 2.5 credits each Learning Cycle. GATES is studying mastery-based learning options for the future as part of a Washington State Board of Education grant program.

Progress at Franklin Pierce comprehensive high schools can be **6** credits per year for four years; progress at GATES can be up to **10.5** credits earned for **4 full learning cycles**. GATES High School will provide meaningful and appropriate learning activities in addition to an environment that is conducive to learning.

All students at GATES High School take a Check and Connect class (advisory) for the entire time they are enrolled at GATES High School. The Check and Connect class meets daily and is taught by the student's academic advisor. The Check and Connect advisor also acts as a case-manager/advocate to support the success of their students. The Check and Connect class emphasizes goal setting, study skills and academic progress. Attendance is required for all students.

Any student between the ages of 15–21, who is a high school student (grades 10–12) and will be able to complete all high school credits and requirements by the time they turn 21 is welcome to apply to GATES High School. Students who are currently under suspension or expulsion from another school are welcome to apply to GATES *when the conditions to re-enter their home school have been met*.

Every student entering GATES High School is required to complete a three-day GATES Success Orientation prior to the term they enter school. The purpose of GATES Success Orientation is to support a successful transition into GATES. GATES Success Orientation activities are designed to help students get to know the school, staff, each other, and themselves as learners to reflect on their academic history and to set goals that will support them in graduation and beyond. Upon completion of their first term at GATES, students may earn .25 elective credits by successfully completing GATES Success Orientation.

Interested students at Franklin Pierce high schools should confer with their counselor to determine if GATES might be a fit. A referral form will be completed as a first step in potential enrollment at GATES.

Crissy Kirklin	Counselor	253-298-4032	ckirklin@fpschools.org
Bonnie French	Student Data Manager	253-298-4070	bfrench@fpschools.org____Stevie
Causey	College & Career Specialist	253-298-4059	scausey@fpschools.org@fpschools.org



Franklin Pierce High School
Principal Brixey Marzano
 11002 18th Ave E, Tacoma, WA
 253-298-3800
 franklinpierce@fpschools.org



@FPHSCARDS



@FPHSSPIRIT

GATES High School
Principal Val Jones
 813 132nd St. S, Tacoma, WA
 253-298-4000
 gates@fpschools.org



@GATESHSGATORS



@GATESHIGH SCHOOL

Washington High School
Principal Kwesi Amoah
 12420 Ainsworth Ave S, Tacoma, WA
 253-298-4700
 washington@fpschools.org




@WHSPATRIOTPRIDE



@WHSPATRIOTPRIDE



 www.fpschools.org

 (253) 298-3000

 info@fpschools.org

Franklin Pierce Schools

315 129th St. South

Tacoma, WA 98444

**FRANKLIN
 PIERCE
 SCHOOLS**