

Benefits

- **Competitive Wages**
- **Healthcare**
- **Dental Insurance**
- **Flexible Spending Accounts (FSA)**
- **Retirement Plans**
- **Paid Holidays**
- **Vacation Time**
- **Attendance Benefits**
- **Employee Support Services**
- **myBetterBenefits**
- **Mobile Carrier Discounts**
- **Educator Discounts**
- **Tuition Discounts**
- **Professional Development**
- **Mentoring Programs**

How to Apply

To review a current listing of our open roles, visit wflboces.org/jobs. Many positions at EduTech are governed by Ontario County Civil Service (OCCS) regulations. Candidates must first apply or complete an exam with OCCS to be determined eligible before they can be considered for employment.

Each job posting includes detailed instructions and links to guide applicants through the Civil Service process. Please review the posting carefully to ensure all required steps are completed. For further assistance, email HRjobs@wflboces.org.

About Us

EduTech is one of 12 Regional Information Centers (RIC) in New York State. We service 47 school districts in eight counties throughout the Genesee Valley and Wayne-Finger Lakes BOCES Regions.

As a RIC, EduTech ensures district access to a wide range of technology at an economy of scale. This allows districts to meet their financial and educational challenges, while maintaining the high technological standards required by the New York State Education Department and various other federal programs.

Contact Us

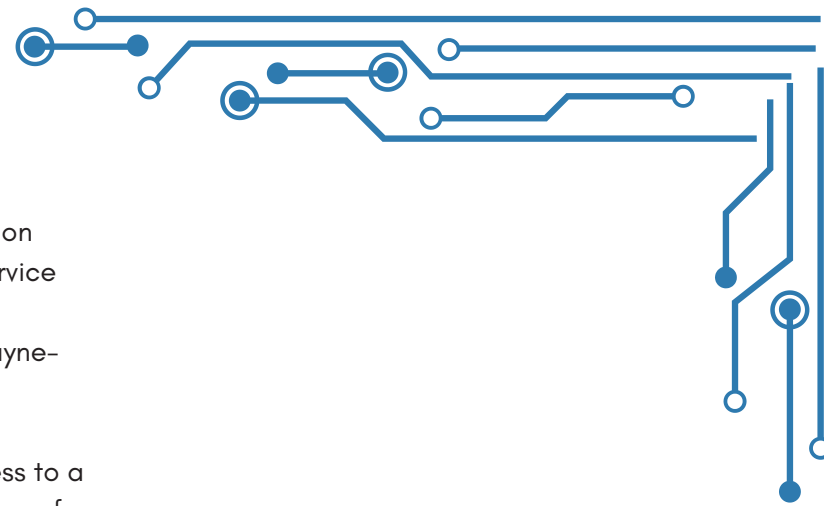
Wayne-Finger Lakes

131 Drumlin Court
Newark, NY 14513
(800) 722-5797

Genesee Valley

7115 West Main Road
Le Roy, NY 14482
(800) 722-5797

edutech.org



GENESEE VALLEY/
WAYNE-FINGER LAKES
**EDUCATIONAL
TECHNOLOGY
SERVICE**



We offer-high quality, professional solutions in the areas of:

Project Coordination

Supporting district planning, installation and overall project management for EduTech-related activities.

Network & Computer Services

LAKENet, MTS, and our HelpDesk provide numerous services including WAN/LAN, VMWare, SAN, backup and recovery, Active Directory, and endpoint device support. EduTech also provides anti-virus, cyber security, firewall, and content monitoring services.

Student Information Systems

Supporting a variety of district-specific student information systems including special education software and Medicaid reporting. This service involves technical maintenance and troubleshooting, end-user support, import and export of data, state and federal reporting, as well as custom reporting.

District Financial & Administrative Systems

Providing technical support for district human resource and business office systems including payroll, time and attendance, accounting software, and supporting district cafeteria point of sale systems and community engagement systems.

Test Scoring, State Data Reporting & Accountability

EduData provides a wide array of data services to support the growing state and federal reporting requirements. Additionally, we strengthen districts through local guidance and instructional improvement on developing sound data governance, data security policies, and best practices.

Instructional & E-learning Services

Through AccelerateU, EduTech has been offering online courses for high school students since 2000. We also provide instructional technology support and training to districts. This includes classroom technology integration, instructional tech troubleshooting, and on-site training.

Warehouse & Courier Operations

The EduTech Warehouse supports districts in the GVBOCES and W-FL BOCES regions. Our areas of expertise include: processing technology hardware and software purchases, inventory for EduTech-owned assets, inventory for district owned/EduTech supported equipment, delivery of technology equipment to districts and BOCES, pick up/removal of all EduTech-owned assets from districts and BOCES, receiving, tagging, and asset management, end-of-life equipment disposal and electronic recycling per NYS regulations.

Who We Hire

All positions filled through Ontario County Civil Service. See reverse side for more information.

► **NETWORKING**

Provides technical support for LAN and/or WAN systems including software and hardware installation and troubleshooting.

Typical positions include:

- Network Technician
- Network Engineer I & II

► **IT SUPPORT**

Provides technical support including maintenance, installation, and troubleshooting for desktop and mobile device hardware and software.

Typical positions include:

- Information Technology Support Technician I & II

► **APPLICATION SUPPORT**

Provides technical support for software applications and peripheral equipment.

Typical positions include:

- Application Support Services Assistant I & II

► **APPLICATION DEVELOPMENT**

Responsible for developing and designing software applications, creating test plans, procedures, and supporting documentation.

Typical positions include:

- Software Developer I & II



View our open roles!