



# Community Schools

## A Whole-Child, Whole-Community Approach

### 10 Elementary Schools

- Baldwin Academy
- California El.
- Kwis Elementary
- Lassalette El.
- Nelson El.
- Palm El.
- Sparks El.
- Valinda El.
- Wing Lane El.
- Workman El.



### 4 Middle Schools

- Fairgrove Academy
- Grandview
- Sierra Vista MS
- Sparks MS

### 3 high Schools

- La Puente HS
- Valley Alternative HS
- Workman HS

 *We Care*



# Celebrate

**I. Integrated Student Supports**  
**II. Family and Community Engagement**

**III. Collaborative Leadership & Practices**  
**IV. Expanded Learning Time & Opportunities**

## Support Hubs

## Student Leadership Opportunities





# Celebrate

**I. Integrated Student Supports**  
**II. Family and Community Engagement**

**III. Collaborative Leadership & Practices**  
**IV. Expanded Learning Time & Opportunities**

## Parent Engagement

### Advancing Wellness Through Parent Leadership



## Committed to Culturally Proficient, Relevant Instruction

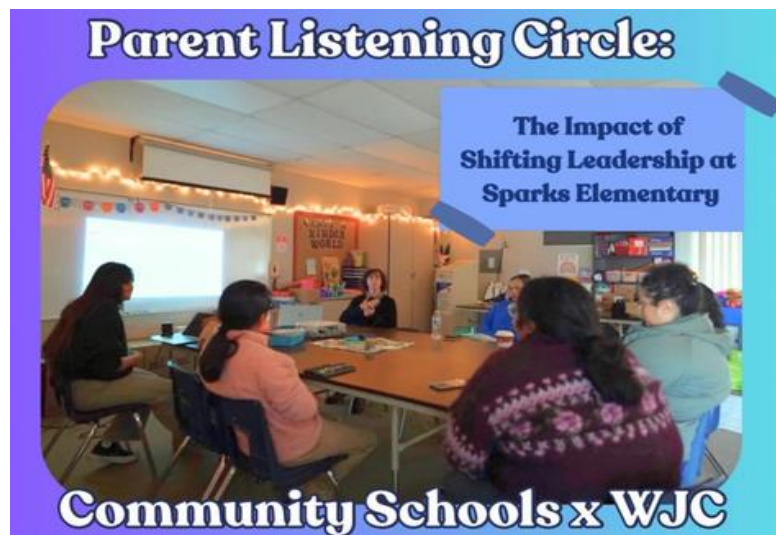




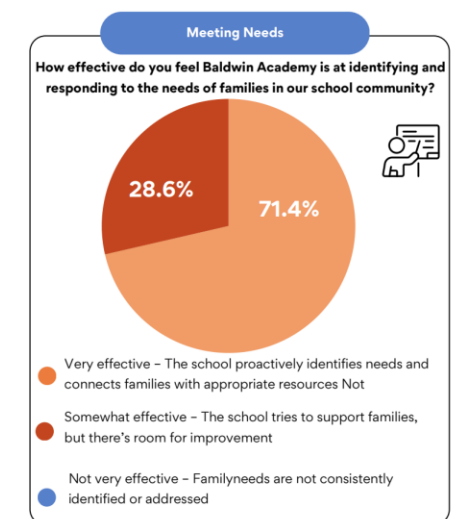
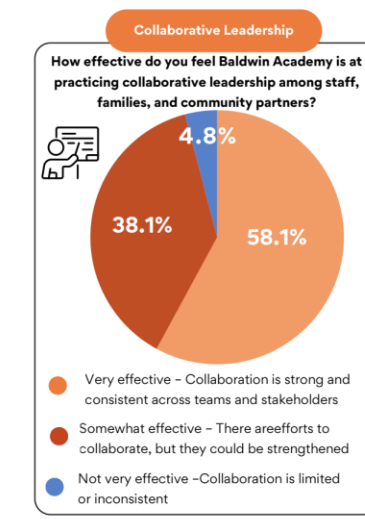
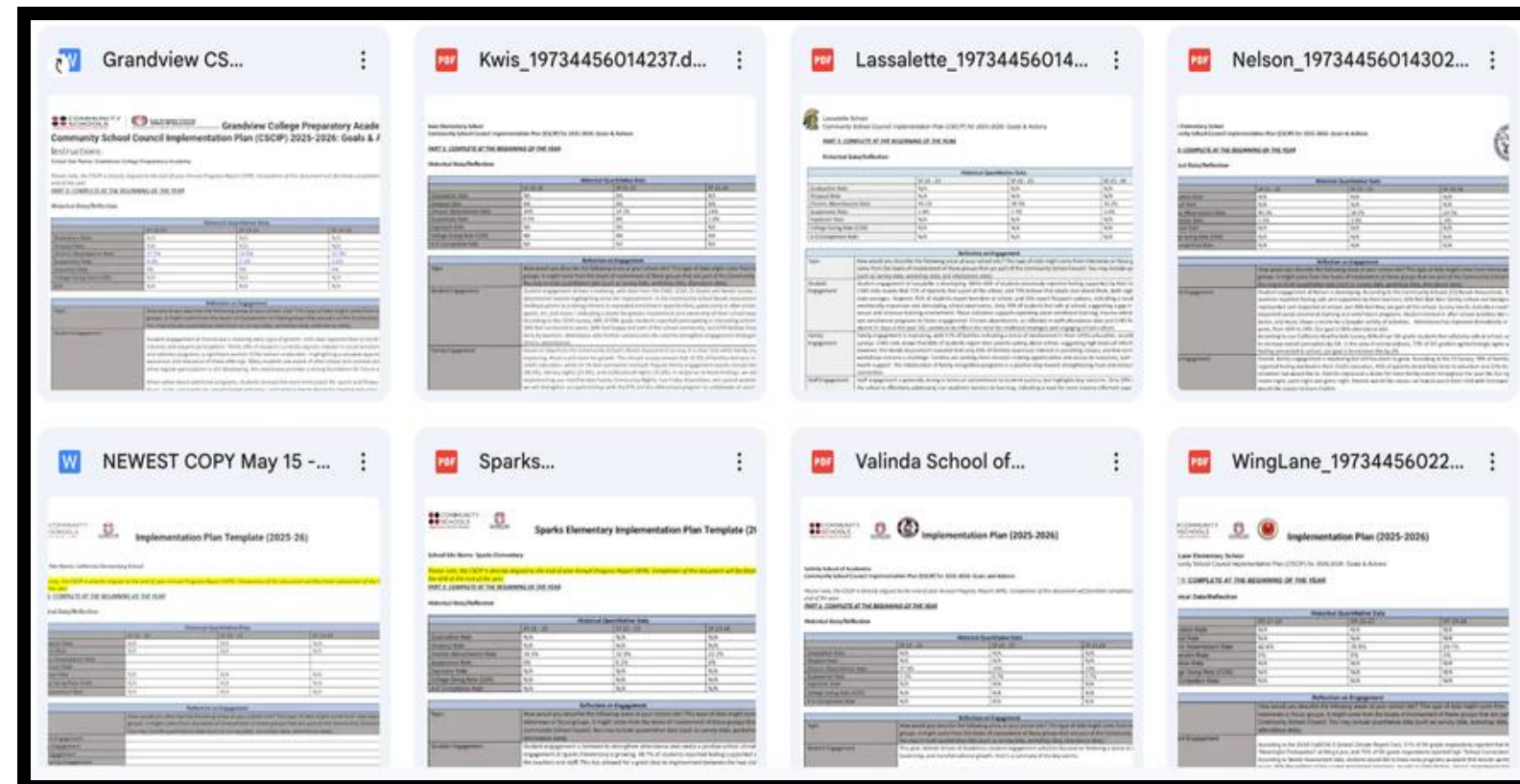
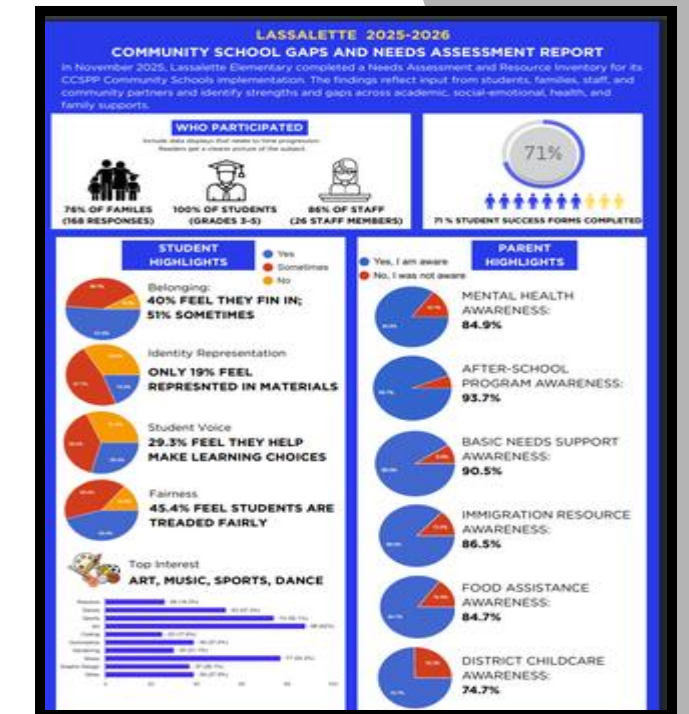
## Parent, Student, and Staff Listening Circles

# Monitor

## Community School Survey Drive Action to Strengthen School Climate and Culture

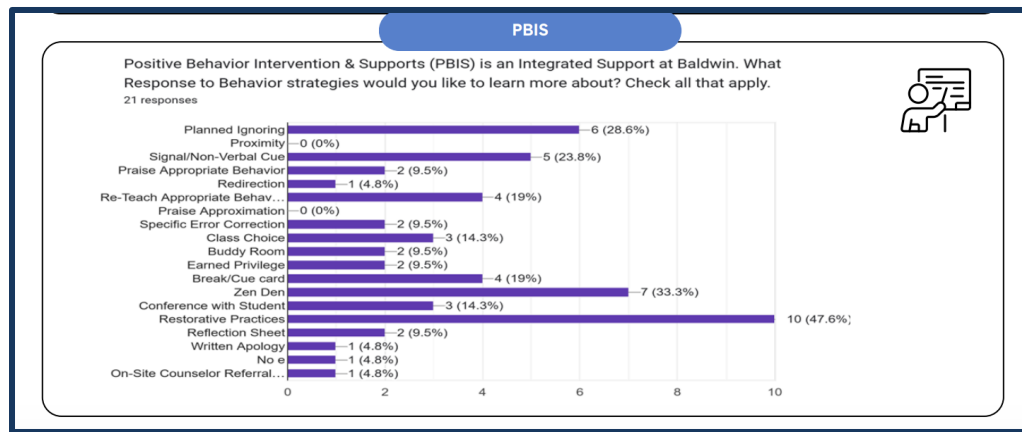
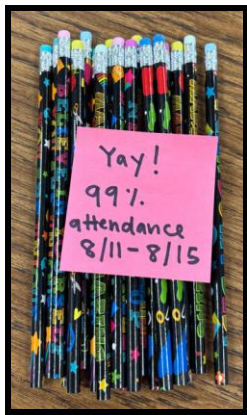
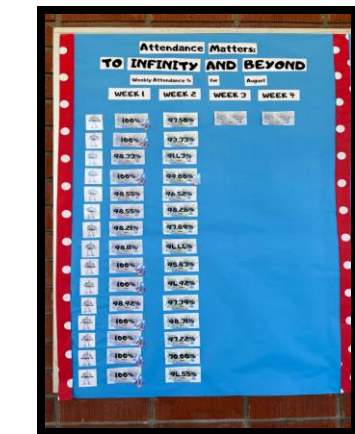
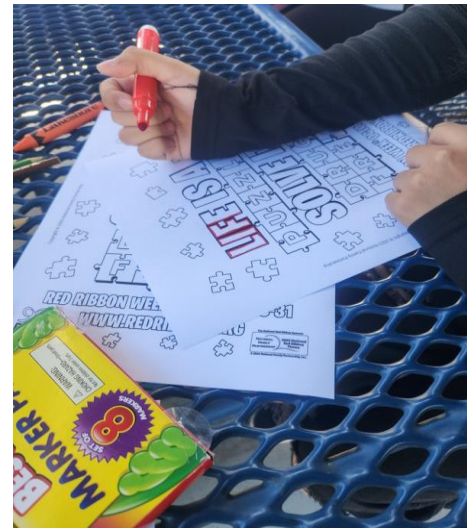


## Revisiting Implementation to Drive Lasting Impact

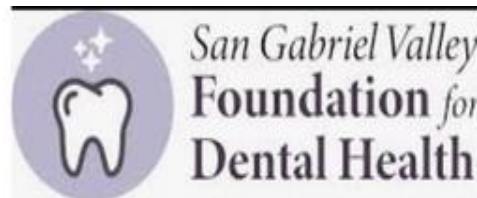




## Monitoring School Climate Indicators: Attendance, PBIS, and Enrichment Activities



## PBIS Student Stores



# Monitor

## Community Partnerships

- Number & quality of partnerships
- Services provided & participation rates
- Alignment with Needs & Assets
- Parent Workshops by Quad



Los Angeles County  
Office of Education



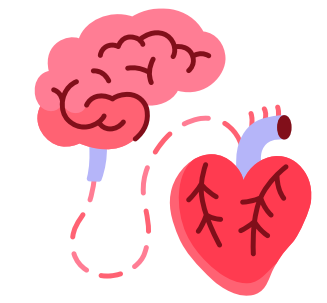
Pacific  
Clinics



COUNTY OF LOS ANGELES  
**Public Health**



# Challenges



## Building Trust and Understanding the Role

- Strengthening trusting, collaborative relationships
- Clarifying and uplifting the Site Specialist role
- Growing from single events to a unified culture of collaboration
- Elevating and amplifying student and family voices in meaningful ways

## Increasing Student & Family Needs

- Expanding our capacity to support student and family well-being
- Strengthening attendance through caring, relationship-centered approaches
- Maximizing impact by coordinating resources creatively and efficiently
  - Deepening our ability to walk alongside families during times of crisis

## Capacity & Sustainability

- Leveraging a dedicated team to support our growing student and family needs creatively
  - Building on strong parent partnerships to further expand meaningful engagement
- Deepening long-term, trusting relationships with families and community partners
  - Strengthening shared understanding and celebration of the Community School model



# Community Schools

## A Whole-Child, Whole-Community Approach



 *We Care*

- C** • Collaborative Leadership
- A** • Active Engagement
- R** • Resources
- E** • Expanded Learning