

Patchogue-Medford Union Free School District

ADDITIONS and ALTERATIONS at BAY ELEMENTARY SCHOOL

February 2026



BBS ARCHITECTS
LANDSCAPE ARCHITECTS
ENGINEERS

www.bbsarchitecture.com

244 EAST MAIN STREET, PATCHOGUE, NEW YORK 11772 | T.631.475.0349



ORIGINAL FLOOR PLAN



KEY:

- Existing Building
- New Construction
- Interior Reconstruction

Patchogue-Medford UFSD BBS Architects December 14, 2021 Update



Additions & Alterations at Bay Elementary School



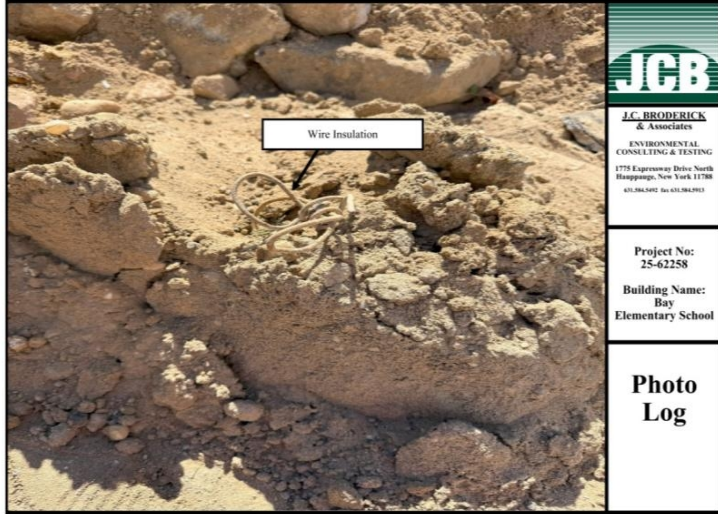
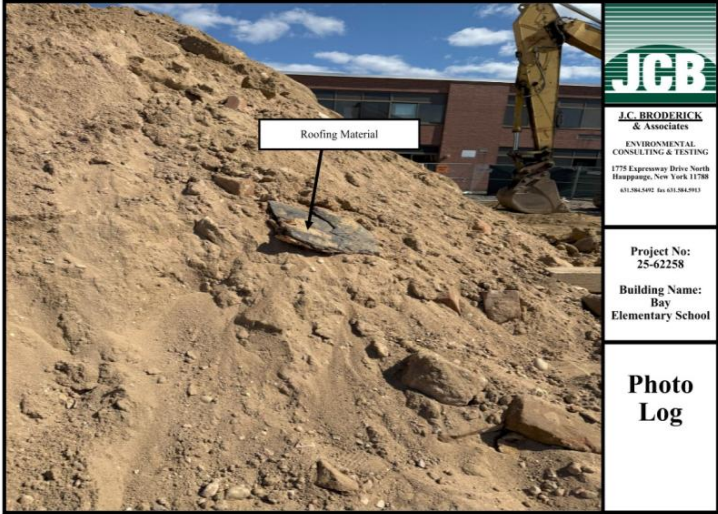
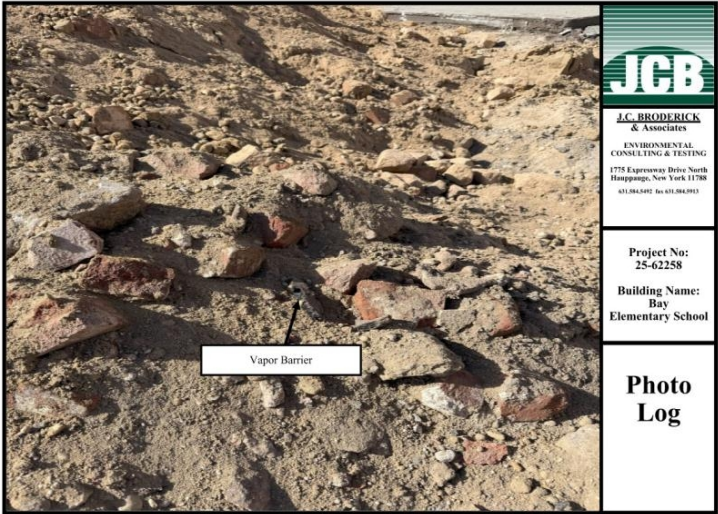
DISCOVERY DURING EXCAVATION

Upon excavation, several small debris fragments, randomly distributed over the 1963 site, were uncovered and documented:

- Shingle pieces (2"-4" in size)
- Wire insulation
- Vapor barrier remnants

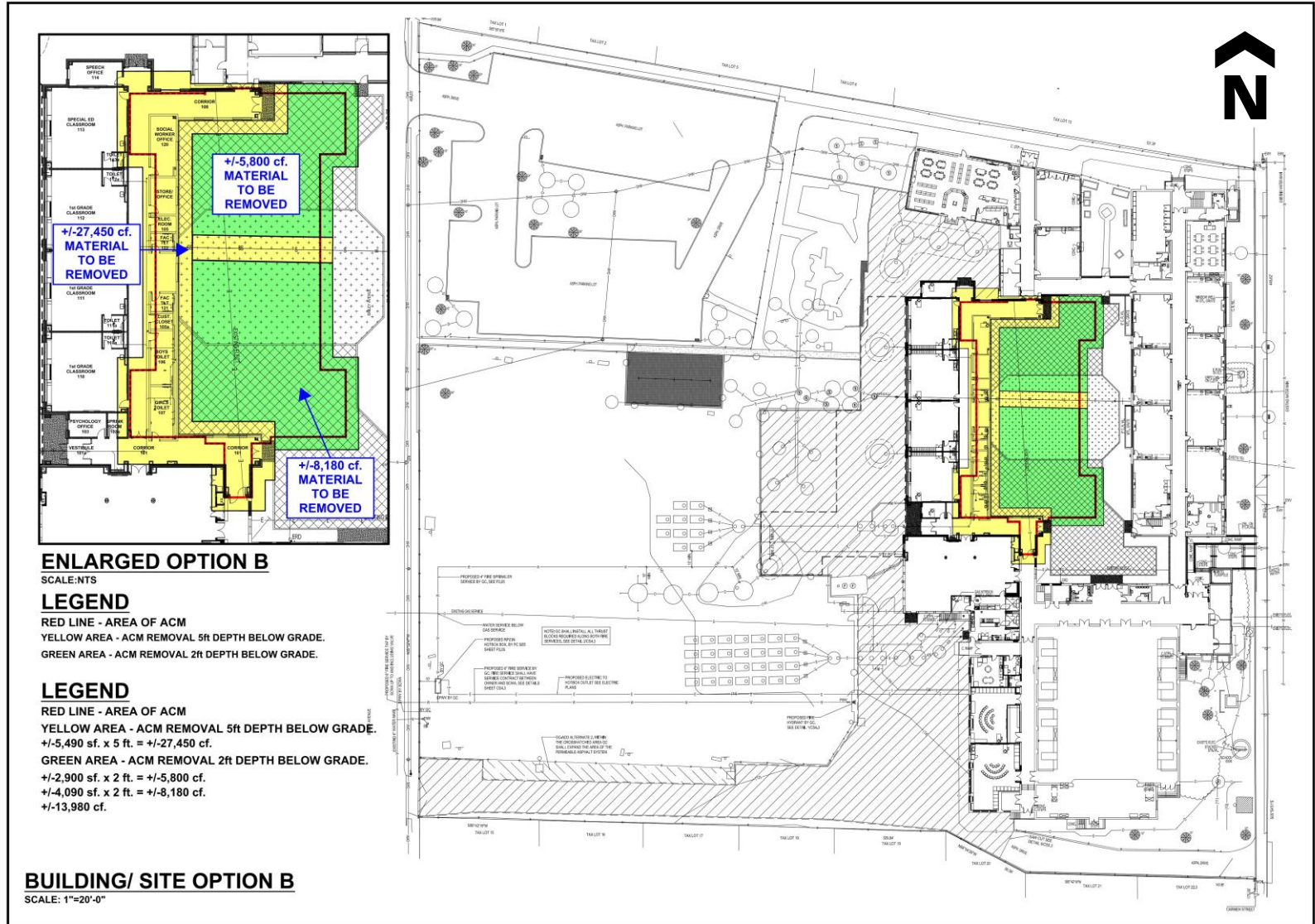
Isolated findings only within footprint of old structure, plus approximately 5 feet around the perimeter.

DISCOVERY DURING EXCAVATION



ABATEMENT PLAN

DOL Impact
DEC Impact
ACM Remediation

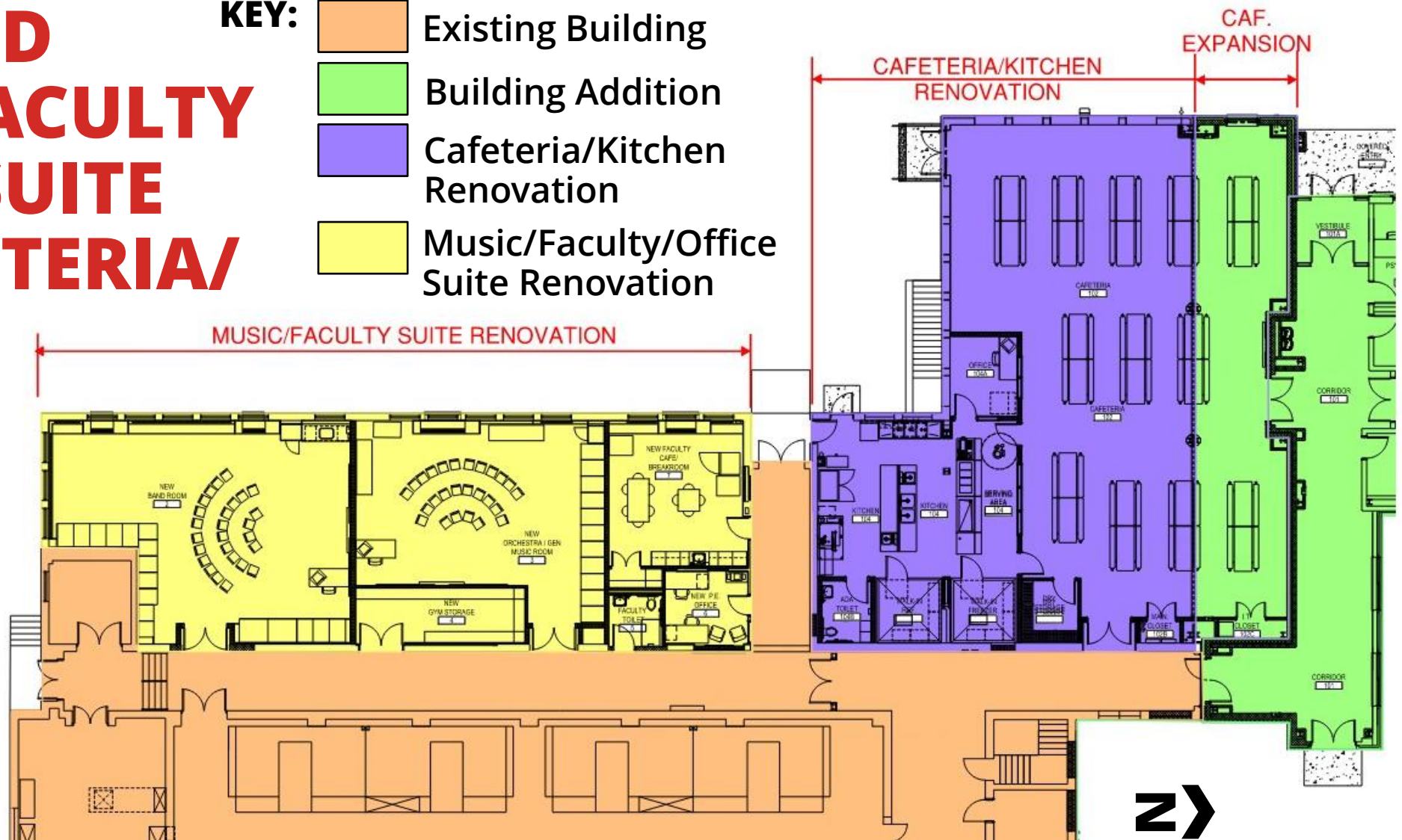


Additions & Alterations at Bay Elementary School





ENLARGED MUSIC/FACULTY /OFFICE SUITE and CAFETERIA/ KITCHEN PLAN

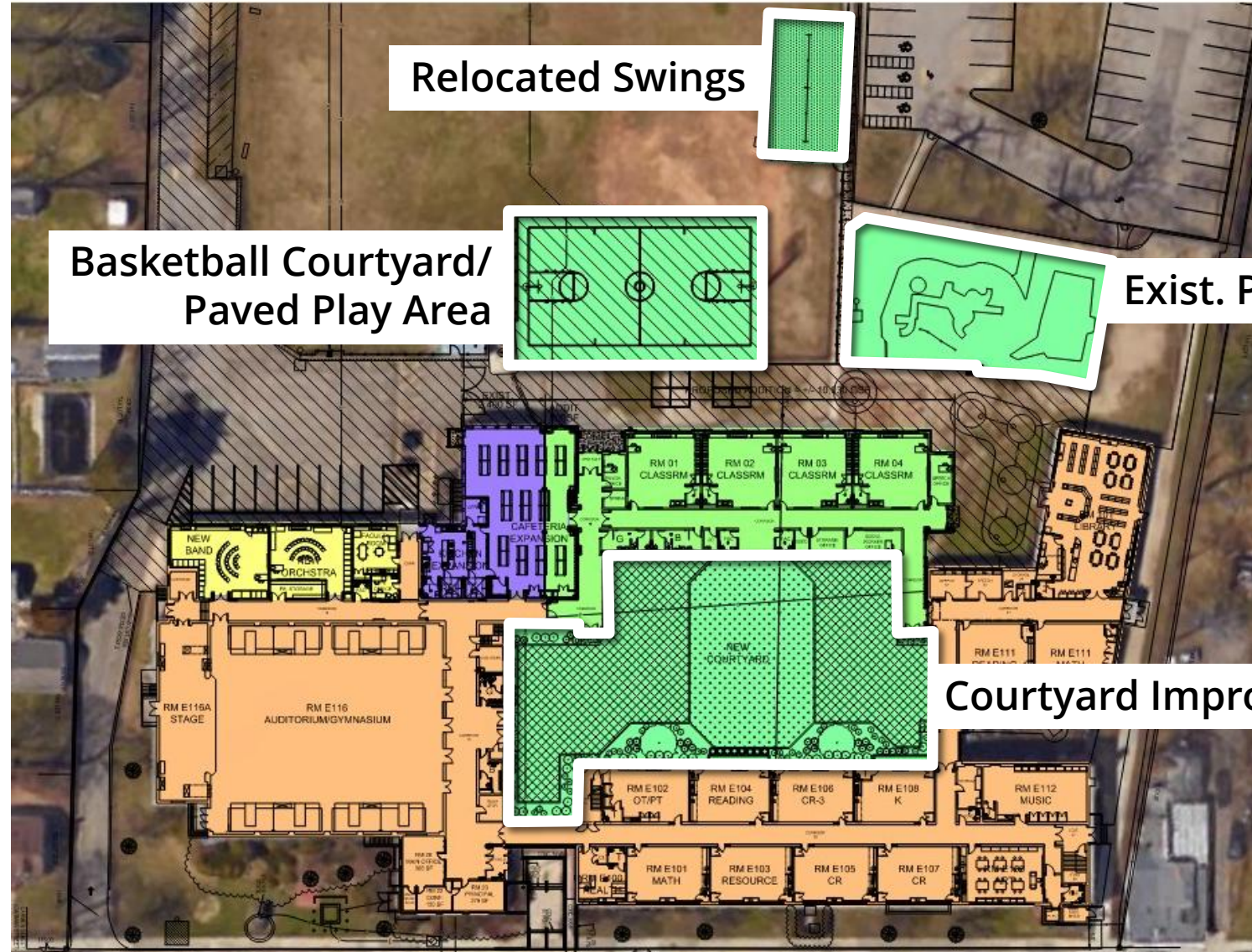
- KEY:**
- Existing Building
 - Building Addition
 - Cafeteria/Kitchen Renovation
 - Music/Faculty/Office Suite Renovation



REVISED SITE PLAN

KEY:

-  Existing Building
-  Building Addition
-  Cafeteria/Kitchen Renovation
-  Music/Faculty/Office Suite Renovation
-  Site Improvements
-  New Pavement / Reconstruction



Courtyard Improvements

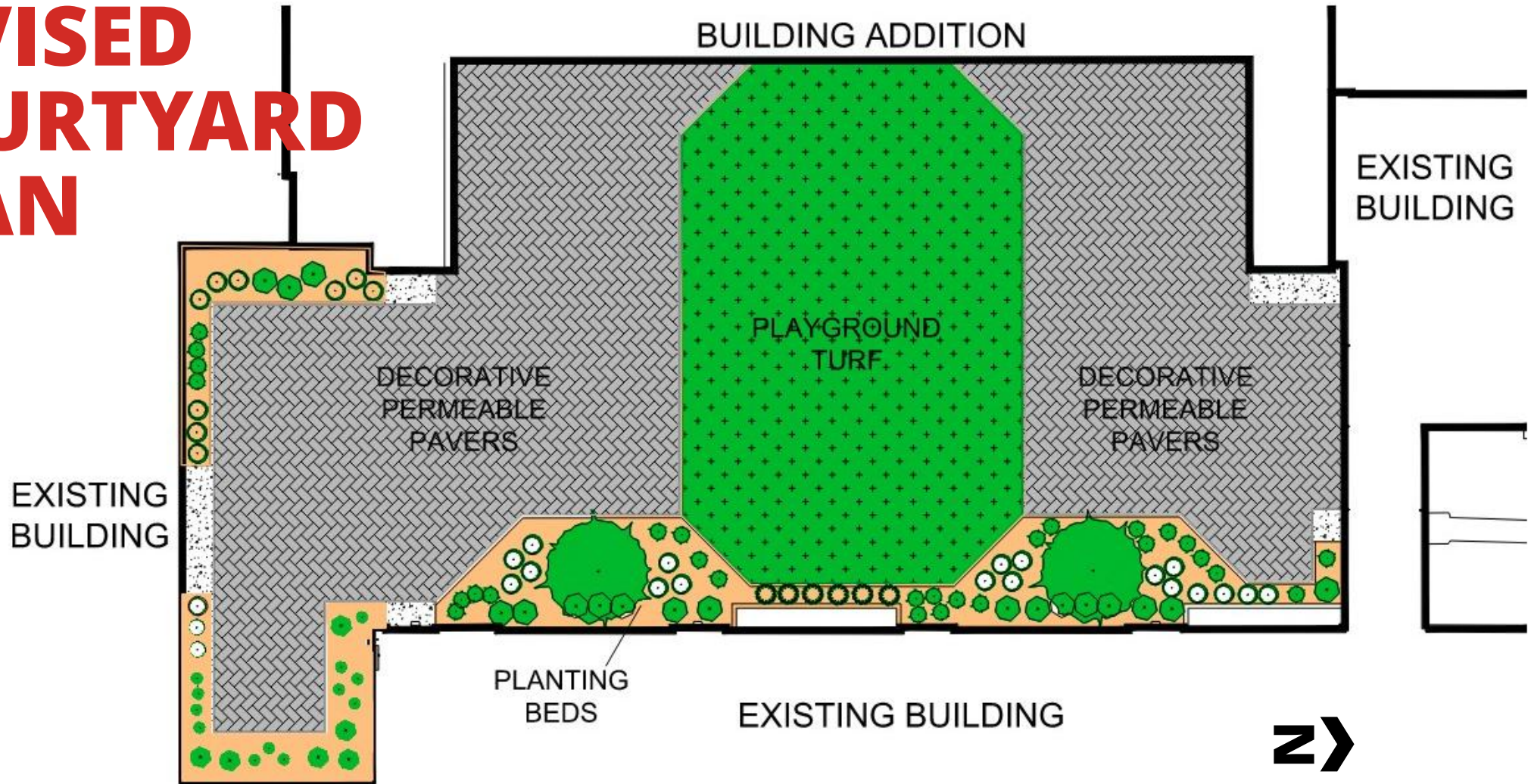


BBS

Additions & Alterations at Bay Elementary School



REVISED COURTYARD PLAN



Additions & Alterations at Bay Elementary School



PRELIMINARY TIMELINE (1/2)

**Winter /
Spring 2026**



Revised Variance with DOL (JCB)



**Revised Project Design –
Building and Site**



Bid Site Remediation



Scope Reduction Negotiations



Spring 2026



Construction Bid Award

PRELIMINARY TIMELINE (2/2)

Summer 2026



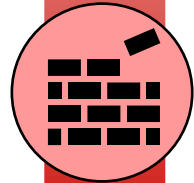
Restart Construction – Site Work

Summer 2026



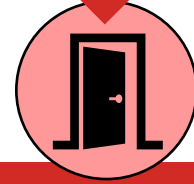
**Interior Reconstruction –
Unit Ventilator Replacements and
Music/Faculty/Office Suite
Reconstruction**

Fall 2026 to
August 2027



Building Addition Construction

Fall 2027



Building Addition Occupancy



Additions & Alterations at Bay Elementary School



What are your questions?

Thank You.



BBS ARCHITECTS
LANDSCAPE ARCHITECTS
ENGINEERS

WWW.BBSARCHITECTURE.COM

244 EAST MAIN STREET, PATCHOGUE, NEW YORK 11772 | T.631.475.0349

