

Completed Measure O Projects

March 3, 2026



Index

Sierra Middle School	2
Highgrove Elementary School	4
Harrison Elementary School	7
Jefferson Elementary School	9
Madison Elementary School	11
John Adams Elementary School	143
Sunshine Early Childhood Center	15
Magnolia Elementary School	18
Andrew Jackson Elementary School	20
Riverside Polytechnic High School	22
Arlington High School	24
Louisa May Alcott Elementary School	27
Henry W. Longfellow Elementary School	29
University Heights Middle School	32
Monroe Elementary School	36
Fremont Elementary School	40

Sierra Middle School

Measure O Campus Improvements

Project Description

Sierra Middle School was built in 1957. Under Measure O, Sierra Middle School received HVAC replacement, light and fire alarm upgrades, ADA accessibility improvements, renovation of SDC classrooms, interior finishes, parking lot expansion, and beautification.

Project Group:	Group A
Architect:	TBP Architects
DSA Status:	Approved on February 19, 2018
Construction:	Completed – November 2019
Project Budget:	\$9,981,631

Project Status

This project is 100% complete and is certified with the Division of the State Architect (DSA).

Sierra Middle School

Completed Project Pictures



Existing Gym with new HVAC



New school letters and architectural features to improve curb appeal

Highgrove Elementary School

Measure O Campus Improvements

Project Description

Highgrove Elementary School was built in 1956. Under Measure O, Highgrove Elementary School received general site improvements, including grading, utilities, paving, new parking and drop-off, a new kindergarten two-story classroom building with 12 classrooms, and a new HVAC system, playground equipment, roof replacement, interior finishes, and accessibility upgrades.

Project Group:	Group A
Architect:	Ruhnau Clarke Architects
DSA Status:	Approved on February 6, 2019
Construction:	Completed – August 2020
Project Budget:	\$24,538,218

Project Status

This project is 100% complete and is certified with the Division of the State Architect (DSA).

Highgrove Elementary School

Completed Project Pictures



New classroom & furniture



New HVAC Units



New grass and sidewalks

Highgrove Elementary School

Completed Project Pictures



New landscaping between existing buildings



New workrooms



New kindergarten play area

Harrison Elementary School

Measure O Campus Improvements

Project Description

Harrison Elementary School was built in 1964. Under Measure O, Harrison Elementary School received a new parking and drop-off area, new classroom building with 5 classrooms, HVAC system, frontage to administration, and removal of portables.

Project Group:	Group A
Architect:	ATI Architects & Engineers
DSA Status:	Approved on March 7, 2019
Construction:	Completed - April 2021
Project Budget:	\$12,369,531

Project Status

This project is 100% complete and is certified with the Division of the State Architect (DSA).

Harrison Elementary School

Completed Project Pictures



Completed Administration Building



New Classroom Building

Jefferson Elementary School

Measure O Campus Improvements

Project Description

Jefferson Elementary School was built in 1948. Under Measure O, Jefferson Elementary School received a new 1-story 6 kindergarten classroom building and corresponding playground area, full modernization of Buildings M and N, including sinks, cabinetry, roofing, HVAC, windows, lighting, paint, drinking fountain replacement, upgrades to restroom facilities, and demolition of 5 classrooms.

Project Group:	Group A
Architect:	WLC Architects
DSA Status:	Approved on February 28, 2019
Construction:	Completed – April 2021
Project Budget:	\$18,407,115

Project Status

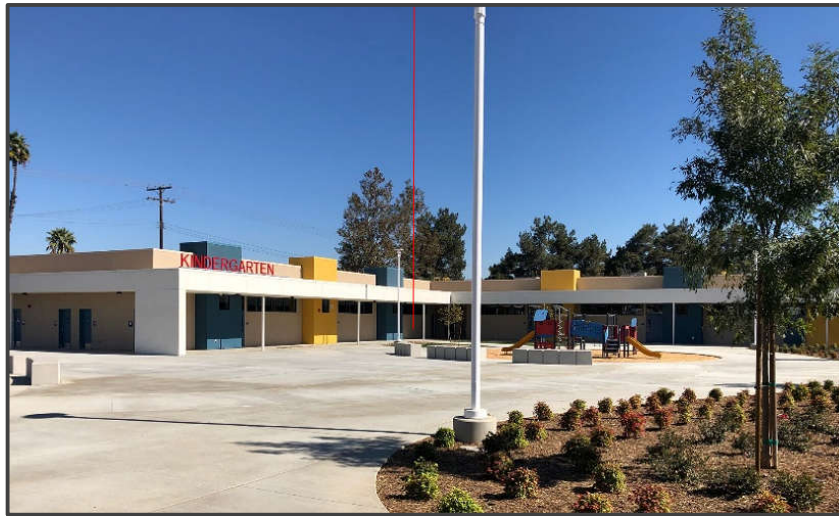
This project is 100% complete and is certified with the Division of the State Architect (DSA).

Jefferson Elementary School

Completed Project Pictures



Administration Building Remodel



New Kindergarten Wing



Multi-Purpose Room

Madison Elementary School

Measure O Campus Improvements

Project Description

Madison Elementary School was built in 1952. Under Measure O, Madison Elementary School received a 5 kindergarten classroom building, kindergarten play area, drop-off and parking lot, lunch shelter, curb appeal improvements, and removal of 5 portables.

Project Group:	Group A
Architect:	LPA Architects
DSA Status:	Approved on March 29, 2019
Construction:	Completed – June 2021
Project Budget:	\$18,631,461

Project Status

This project is 100% complete and is certified with the Division of the State Architect (DSA).

Madison Elementary School

Completed Project Pictures



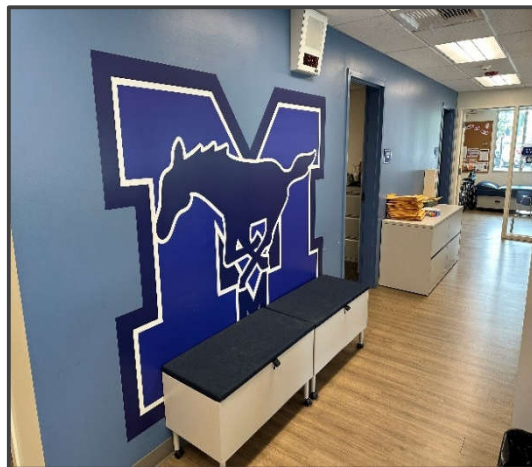
Drop Off and Curbs



Kindergarten Play Area



Kindergarten Classroom Cabinet/Sink



Main Office Work Room

John Adams Elementary School

Measure O Campus Improvements

Project Description

John Adams Elementary School was built in 1962 on a 7.6 acre site. Under Measure O, the school received a new single-story five (5) Kindergarten classroom building, removal of five (5) existing portable classrooms, new kindergarten play area that includes new landscaping, shades trees, and playground equipment, new decomposed granite walking path area with new landscape and irrigation, new drop-off area and parking lot off of John Adams Street that includes twenty-two (22) standard parking spaces and two (2) ADA parking spaces, and related site work.

Project Group:	Group C
Architect:	LPA Architects
DSA Status:	Approved on July 9, 2019
Construction:	Completed – November 2021
Project Budget:	\$13,995,922

Project Status

This project is 100% complete and is certified with the Division of the State Architect (DSA).

John Adams Elementary School

Completed Project Pictures



New Kindergarten Play Area



New Upper Grades Play Area



New Signage

Sunshine Early Childhood Center

Measure O Campus Improvements

Project Description

Sunshine Early Childhood Center was built in 1947. The site program houses the California Children Services (CCS), a county program that services students with special needs. Under Measure O, the site received a new portable building to relocate the CCS Program which relieved approximately 3,000 square feet for Sunshine students. The site also received a new play structure, a light modernization, and a front campus facelift.

Project Group:	Group B
Architect:	GO Architects
DSA Status:	Approved on February 19, 2019
Construction:	Completed - December 13, 2021
Project Budget:	\$10,800,000

Project Status

This project is 100% complete and is certified with the Division of the State Architect (DSA).

Sunshine Early Childhood Center

Completed Project Pictures



New Electrical Service



Building A Modernization



California Children Services



New Electrical Service

Sunshine Early Childhood Center

Completed Project Pictures



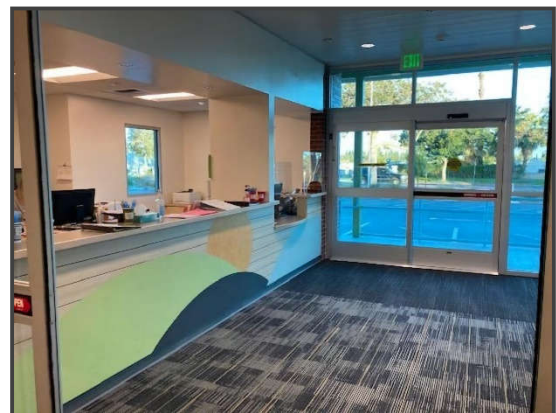
Sunshine ES New Exterior



Building A Exterior



Sunshine New Exterior



New Sunshine Lobby

Magnolia Elementary School

Measure O Campus Improvements

Project Description

Magnolia Elementary School is one of the oldest schools in the District, built in 1898. Under Measure O, the school will receive construction of two (2) new single-story classroom buildings with ten (10) standard classrooms, student restrooms, and a staff restroom, removal of ten (10) existing portable classrooms from the site at the end of the project, new kindergarten play area, new drop-off area off of Maplewood Place, new flooring in cafeteria, and related site work.

Project Group:	Group C
Architect:	ATI Architects
DSA Status:	Approved on April 11, 2019
Construction:	Completed – November 2021
Project Budget:	\$12,616,082

Project Status

This project is 100% complete and is certified with the Division of the State Architect (DSA).

Magnolia Elementary School

Completed Project Pictures



New Classroom Buildings



New Kindergarten Area & Play



New Kindergarten Play Area



New Kindergarten Play Area



New Drop Off Area



New Building & Play Structures

Andrew Jackson Elementary School

Measure O Campus Improvements

Project Description

Andrew Jackson Elementary School was built in 1959. Under Measure O, project scope includes construction of a new two-story classroom building with eight (8) standard classrooms, staff and student restrooms, and custodial areas, removal of eight (8) existing portables, new fencing, new parking lot and drop off areas, thirty-five (35) standard stalls and two (2) HC stalls, renovation of six (6) existing kindergarten classrooms, new kindergarten play area that includes new landscaping, shade trees, and new playground equipment, renovation of existing classroom buildings and library, and site work including the removal and replacement of existing damaged sewer lines, new underground infrastructure for the new building, ADA upgrades, and relocation of Head Start portable classroom, new interior restroom and finishes, new play equipment, landscaping & hard-scape.

Project Group:	Group B
Architect:	WLC Architects
DSA Status:	Approved on August 28, 2019
Construction:	Completed - March 2022
Project Budget:	\$22,117,380

Project Status

This project is 100% complete and is certified with the Division of the State Architect (DSA).

Andrew Jackson Elementary School

Completed Project Pictures



New 2-Story Building



Shade Structure

Riverside Polytechnic High School

Measure O Campus Improvements

Project Description

Riverside Polytechnic High School was built in 1965. Under Measure O Phase I, project includes ADA upgrades to the main campus, and Phase II includes the addition of a new auxiliary gym.

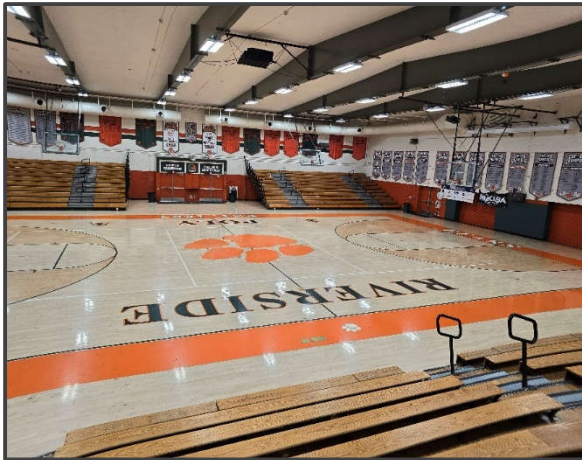
Project Group:	Group B
Architect:	WLC Architects
DSA Submittal:	Approved on March 30, 2019
Phase I Construction:	Completed - September 2021
Phase II Gym Construction:	Completed – May 2022
Project Budget:	\$24,039,894

Project Status

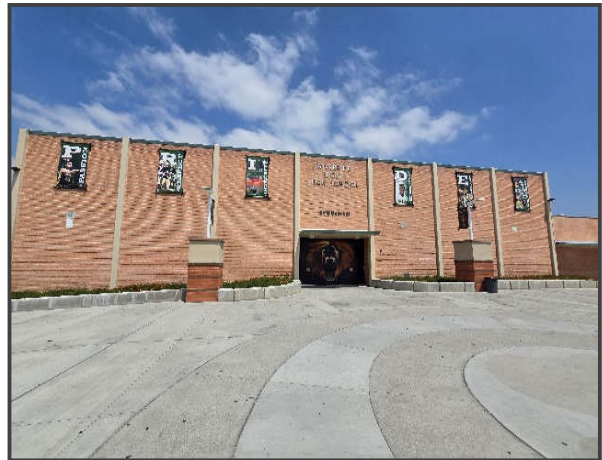
This project is 100% complete and is certified with the Division of the State Architect (DSA).

Riverside Polytechnic High School

Completed Project Pictures



Interior Gym



Exterior New Gym



Polywood Bowl

Arlington High School

Measure O Campus Improvements

Project Description

Arlington High School was built in 1973. Under Measure O, the project includes three (3) science and three (3) special education with life skills learning area, upgrades to media arts building, courtyard and site enhancements, moderate modernization, renovation of existing pool, new auxiliary gym, and stadium expansion.

Project Group:	Group C
Architect:	Ruhnau Clarke Architects
DSA Status:	Approved
Construction:	Completed – May 2022
Project Budget:	\$26,607,776

Project Status

This project is 100% complete and is certified with the Division of the State Architect (DSA).

Arlington High School

Completed Project Pictures



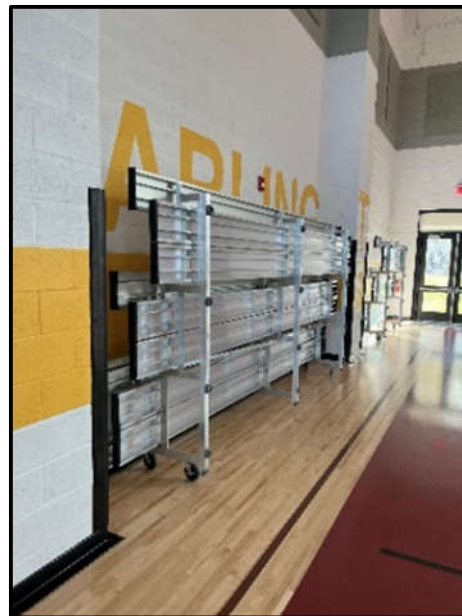
New Ticket Booth



New Bio-Med Building



Tip & Roll Bleachers



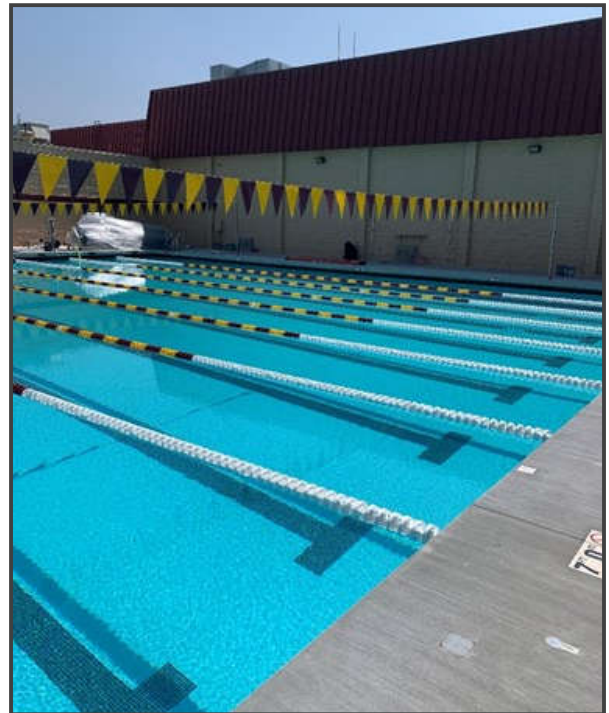
Tip & Roll Bleachers

Arlington High School

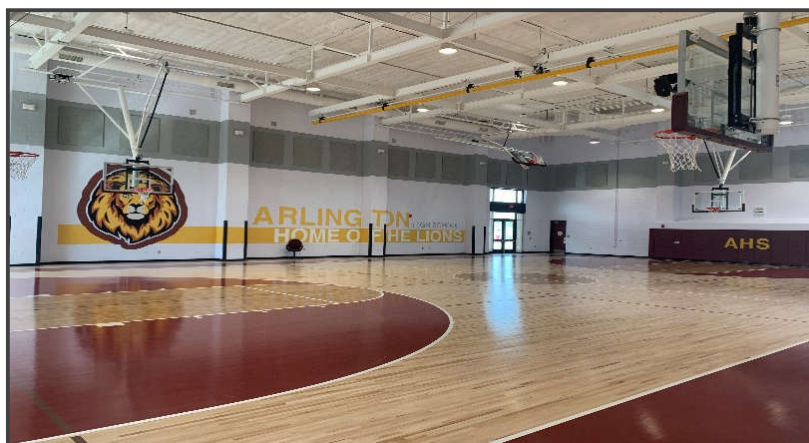
Completed Project Pictures



Exterior Auxiliary Gym



Modernized Pool



Interior Auxiliary Gym

Louisa May Alcott Elementary School

Measure O Campus Improvements

Project Description

Louisa May Alcott Elementary School was built in 1961. Under Measure O, the project includes new interior and exterior painting, new t-bar ceiling, new lighting, new HVAC, casework, carpet, restroom and site ADA upgrades, removal of eleven (11) classroom portables, grading, new hard court play yard area, turf, new landscape, irrigation throughout the campus, new fencing, gates, new domestic water, sewer, storm drain, gas line for new building; and a new classroom building with six (6) general education classrooms, four (4) kindergarten classrooms with restrooms, and new kindergarten playground, play equipment and fencing.

Project Group:	Group B
Architect:	DLR Architects
Construction:	Completed - August 2022
Project Budget:	\$21,588,163
Percentage Complete:	100%

Project Status

This project is 100% complete and is certified with the Division of the State Architect (DSA).

Louisa May Alcott Elementary School

Completed Project Pictures



Front of School



New Landscaping Behind New Building



New 2-Story Classroom Building

Henry W. Longfellow Elementary School

Measure O Campus Improvements

Project Description

Henry W. Longfellow Elementary School was built in 1947. It faced logistical challenges due to its small footprint and no onsite parking. The project removed 12 portable classroom buildings. The school is on 6 acres. Under Measure O, and State Funding contributions, the project includes a new classroom building with 6 kindergarten and 6 general education classrooms with new play area, new administration building and repurposing of the existing administration building, new parking lot and modernization of existing buildings.

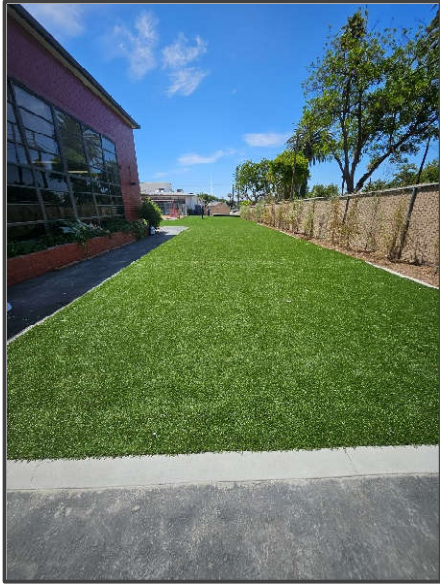
Project Group:	Group C
Architect:	DLR Architects
Construction:	June 2022 to December 2023
Project Budget:	\$24,295,610
Percentage Complete:	99%

Project Status

- ✓ The new playground is complete.
- ✓ Installation of turf to the kindergarten area (6th Street) complete.
- ✓ New trees in the quad planters are complete.
- ✓ Project work completed in July 2024.

Henry W. Longfellow Elementary School

Construction Progress Pictures



Turf Installation – Bldg. A



Playground



Library building repainted



Planter installation

Henry W. Longfellow Elementary School

New Site Plan



University Heights Middle School

Measure O Campus Improvements

Project Description

University Heights Middle School was built in 1973. Under Measure O, project includes seven (7) new classrooms added to existing structure, expansion of the music room, new finishes, relocation of existing library, ADA upgrades, new concrete running track, fire lane extension, landscaping and security fencing.

Project Group:	Group C
Architect:	GO Architects
Construction:	June 2022 to December 2023
Project Budget:	\$15,500,000
Percentage Complete:	100%

Project Status

- ✓ More casework has been added at the library circulation desk.
- ✓ Project work completed in May 2024.

University Heights Middle School

Construction Progress Pictures



Library Office



Music Room



Field & Running Track

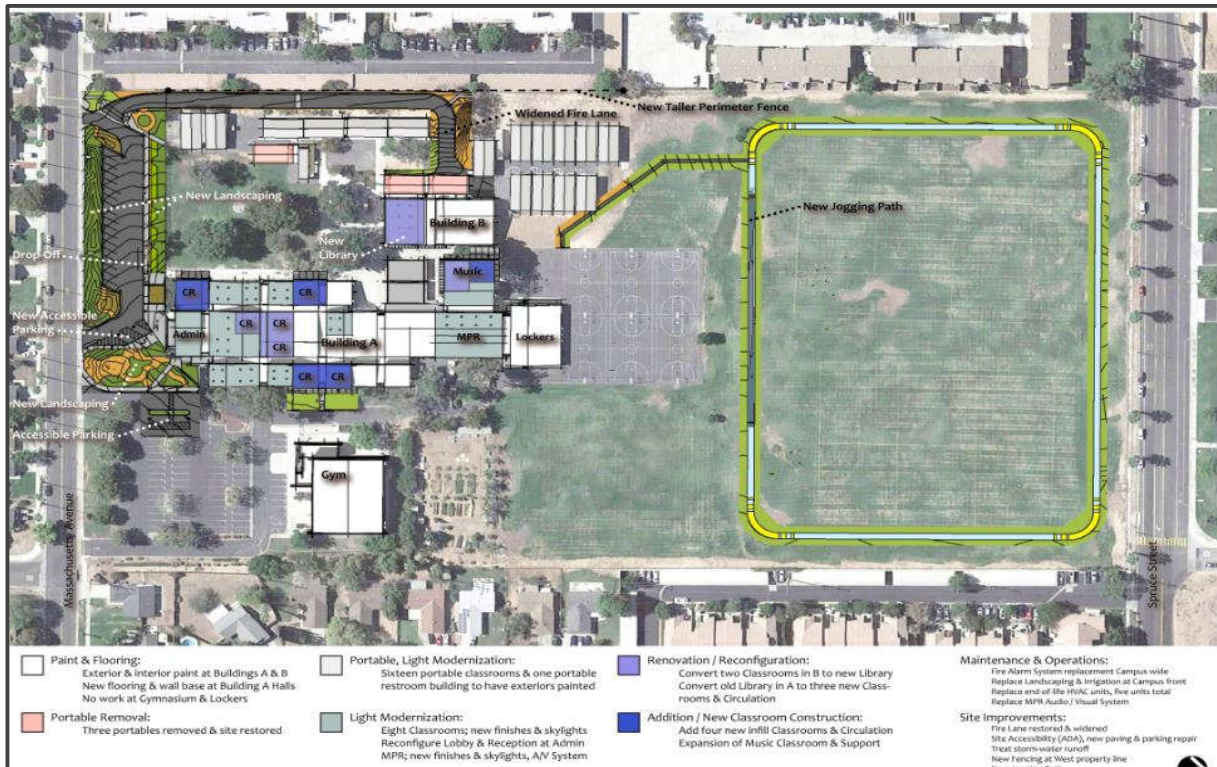
University Heights Middle School

Project Campus Picture



University Heights Middle School

Site Plan



Monroe Elementary School

Measure O Campus Improvements

Project Description

Monroe Elementary School was built in 1955. Under Measure O, the project includes a new 1-story classroom building with 5 kindergarten classrooms, modernization of existing buildings including fire alarm, HVAC, plumbing, roof, door hardware, paint, new carpet, casework, ADA improvements, new school frontage, replacing kindergarten equipment, updates to irrigation and drainage systems and twenty-three (23) new restroom facilities. Site work includes new playground fields, new water, sewer, gas lines, new parking, and bus drop-off and lunch shelter.

Project Group:	Group B
Architect:	HMC Architects
Construction:	Completed - March 2023
Project Budget:	\$23,006,853
Percentage Complete:	100%

Project Status

- ✓ The asphalt at the front parking lot and playground have been sealed and re-stripped.

Monroe Elementary School

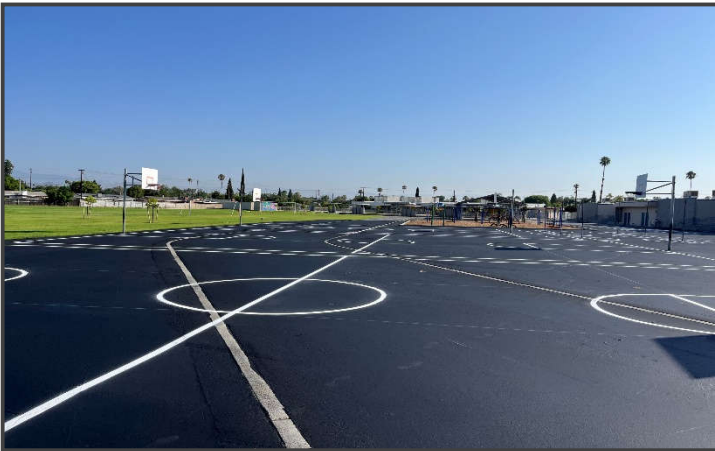
Construction Progress Pictures



Slurry coat



Hopscotch



Striping at basketball courts



Basketball and tetherball

Monroe Elementary School

Project Rendering



Fremont Elementary School

Measure O Campus Improvements

Project Description

Fremont Elementary School is one of the oldest schools in the District, built in 1917. Under Measure O, the project includes a new two-story building with six (6) general classrooms and six (6) kindergarten classrooms with interior restrooms, new play equipment and surfacing, landscape, elevator, covered walkway, exterior restrooms and storage. Site work includes removal of four portables and demo existing building J, new kindergarten play yard, hard court play yard area, turf, ADA upgrades, new visitor parking lot with fifteen (15) regular and two (2) ADA accessible parking stalls, grading, re-stripe and slurry existing parking lot, and domestic water, sewer, storm drain, gas, electrical power upgrades. Existing classroom buildings and administration updates include exterior improvements and roofing, reconfigure administration and interior and exterior paint.

New Marquee Sign is an additional scope for the purchase and installation of a new digital, wall-mounted marquee at the front of the school.

Project Group:	Group C
Architect:	Ruhnau Clarke Architects
Construction:	Completed - September 2022
Project Budget:	\$18,672,952 (including new marquee sign)
Percentage Complete:	100%

New Marquee Sign Project Status

- ✓ The project was approved by the Division of State Architect (DSA) on October 19, 2024.
- ✓ The construction start date was on April 15, 2025.
- ✓ The construction completion was June 2025
- ✓ This marquee sign project is now complete and DSA certified.

Fremont Elementary School

Construction Progress Pictures



Marquee Sign



Marquee Sign