



RESOURCE OPTIMIZATION COALITION

Meeting #3

February 17, 2026

Today's Objectives

Identify themes from Educational Vision General Guidelines

*Dr. Rachel Monárrez
Superintendent*

Highlight Graduate Profile & Strategic Roadmap Work

*Dr. Matt Witmer
Assistant Superintendent, Educational Services*

Preview Draft Guiding Principles

*Yuri Calderón
Assistant Superintendent, Business Services*

Explore Data Scenario

*Rob Murray, King Consulting
Chris Keeler, Director, Research, Data Strategy & Innovation*

Closure

*Dr. Rachel Monárrez
Superintendent*

Coalition Meeting Norms

- **Honor start and end times**
- **Attendance at all meetings is critical**
- **Members will inform District if they will not be able to attend by noon the day of the meeting**
- **Actively participate**
- **Ask clarifying questions**
- **Focus on the work of the group - all options are valid**

ROC Chairs

- Kimberly Buchan
- Jolin Lang
- Michael Schmidt



Our Work

March 10, 2026

Draft Guiding Principles and Weightings

March 26, 2026

Report to Board of Education

Fall-Winter 2026-2027

*Apply Guiding Principles
Feedback Loop*

Facilities Master Plan Prioritization

Ranking of Scope of Work Categories

Facilities Master Plan Committee

- Modernize & Reconfigure Aging Classrooms
- Campus Arrival: Parking, Drop-Off & Entry Plaza
- Student Support & Counseling Services
- Existing Building Systems, Toilets, & Improved Energy Efficiency
- Assembly and Food Service

Refreshed Priorities

Top Priorities:

1. Modernize & Reconfigure Aging Classrooms
2. Critical Building Systems

High Priorities:

3. Safety, Security and Access
4. Technology Infrastructure

Student Experience:

5. Student Support, Staffing & Programs
6. Shared and Exterior Spaces

RECONFIGURE

3.1 Educational Vision

Learning Spaces Flexible & Multi-Modal Gathering

- Site Considerations
- Outdoor Spaces
- Support Spaces

Educational Vision

3.1 EDUCATIONAL VISION GENERAL GUIDELINES



Orange Unified School District
Facilities Master Plan



PURPOSE

The purpose of design guidelines is to ensure the following:

- **A Common Baseline**
To guide a consistent approach in developing each school site master plan proposed improvements.
- **Common Goals**
To engage District stakeholders in a participatory process in developing their vision.
- **Outcome Focused**
To document educator's intent for program delivery and goals.
- **Equitable Quality**
To be used for assessing existing facilities and budgeting projects for a long-term financial plan.
- **Continuous Improvement**
As a tool for the reevaluation, adjustment and measurement of the plan over time.

BACKGROUND

In 1994, California Department of Education (CDE) formalized regulations governing standards on the design and construction of new school facilities. Included are requirements for the submit of educational specifications (Facility Standards/ Design Guidelines) – see California Code of Regulations, Title 5, Section 14034. The requirements are delineated in the Education Code Section 39101 (c) and California Code of Regulations, Title 5, Section 14030 (a). Specific School design standards are contained in California Code of Regulations, Title 5, Section 14001, 14010 and 14030.

In 2009, CDE added a Plan Summary form for those projects applying for new construction funds from the State Allocation Board for a new school or additions to an existing school. In July 2010, all Educational Specifications (Facility Standards/ Design Guidelines) were required to be approved by the District's Governing Board and submitted to CDE as part of any application for funding.

IMPLEMENTATION

While this document represents a district-wide guideline, it is important that administrators, faculty, students and community at each site are allowed to validate their site-specific program needs during implementation. If a school design team has suggestions on how to improve or tailor this document for their site-specific needs, these suggestions should be brought to the attention of District leadership in charge of facility planning prior to designing it. It is understood that the degree of consistency between the site-specific solutions and the district-wide educational specifications may vary from site to site.

Agencies shown in the document were determined for the ideal program placement but may vary based on existing site conditions or programmatic specific solutions. Once projects are released to proceed with design, a school site committee shall be formed to analyze the impact of site specific constraints and program specific needs. This analysis may result in solutions that deviate from the educational program standards described in this document. The design team should inform District leadership of any significant deviations identified or proposed prior to the presentation of these solutions to the school site committee. It is expected as the District's vision changes over time, this document would be updated but the overall guiding principles would remain intact.

3.1 Educational Vision

What are the most important areas?

Educational Vision

3.1 EDUCATIONAL VISION GENERAL GUIDELINES



PURPOSE

The purpose of design guidelines is to ensure the following:

- **A Common Baseline**
To guide a consistent approach in developing each school site master plan proposed improvements.
- **Common Goals**
To engage District stakeholders in a participatory process in developing their vision.
- **Outcome Focused**
To document educator's intent for program delivery and goals.
- **Equitable Quality**
To be used for assessing existing facilities and budgeting projects for a long-term financial plan.
- **Continuous Improvement**
As a tool for the reevaluation, adjustment and measurement of the plan over time.



BACKGROUND

In 1994, California Department of Education (CDE) formalized regulations governing standards on the design and construction of new school facilities. Included are requirements for the submit of educational specifications (Facility Standards/ Design Guidelines) – see California Code of Regulations, Title 5, Section 14034. The requirements are delineated in the Education Code Section 39101 (c) and California Code of Regulations, Title 5, Section 14030 (a). Specific School design standards are contained in California Code of Regulations, Title 5, Section 14001, 14010 and 14030.

In 2009, CDE added a Plan Summary form for those projects applying for new construction funds from the State Allocation Board for a new school or additions to an existing school. In July 2010, all Educational Specifications (Facility Standards/ Design Guidelines) were required to be approved by the District's Governing Board and submitted to CDE as part of any application for funding.

IMPLEMENTATION

While this document represents a district-wide guideline, it is important that administrators, faculty, students and community at each site are allowed to validate their site-specific program needs during implementation. If a school design team has suggestions on how to improve or tailor this document for their site-specific needs, these suggestions should be brought to the attention of District leadership in charge of facility planning prior to designing it. It is understood that the degree of consistency between the site-specific solutions and the district-wide educational specifications may vary from site to site.

Agencies shown in the document were determined for the ideal program placement but may vary based on existing site conditions or programmatic specific solutions. Once projects are released to proceed with design, a school site committee shall be formed to analyze the impact of site specific constraints and program specific needs. This analysis may result in solutions that deviate from the educational program standards described in this document. The design team should inform District leadership of any significant deviations identified or proposed prior to the presentation of these solutions to the school site committee. It is expected as the District's vision changes over time, this document would be updated but the overall guiding principles would remain intact.

Orange Unified School District
Facilities Master Plan



Community Input

Broad Sampling



941 responses
Listening and Learn Tour



489 responses –
Listening & Learn Tour
Prioritization Survey



21,267 responses
LCAP Survey

Total:
22,697



Common Themes

ALIGNMENTS

Where do priorities align?

Below are the themes that align across the Superintendent's Listening Tour and the LCAP Survey:



TEACHING & LEARNING

"I sincerely believe the majority of staff members do it for the students. The students are our future."



FACILITIES & INFRASTRUCTURE

"Some facilities are aging and in need of repair and modernization."



WELLNESS & SAFETY

"Students and staff deserve learning environments that are safe, healthy, and supportive."



FAMILY & COMMUNITY ENGAGEMENT

"Sense of community: People feel that they belong and want to continue and also better our community."

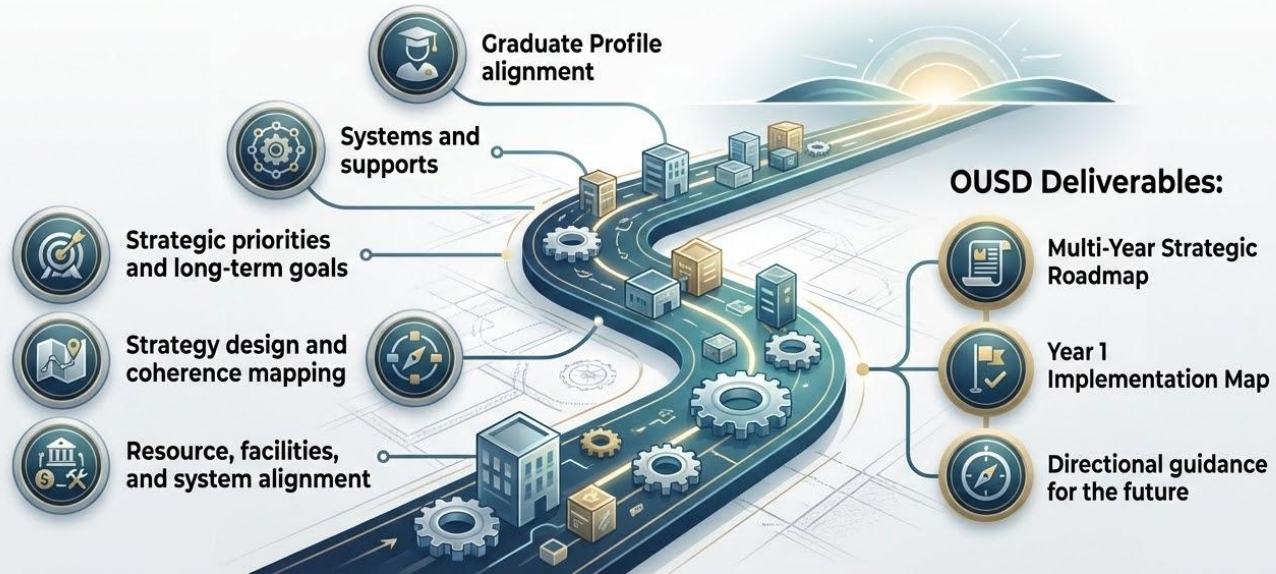


EXTRACURRICULAR & ADVANCED OPPORTUNITIES

"We are a diverse district and in our current state, there's a lot of flexibility in our approach to teaching and learning."

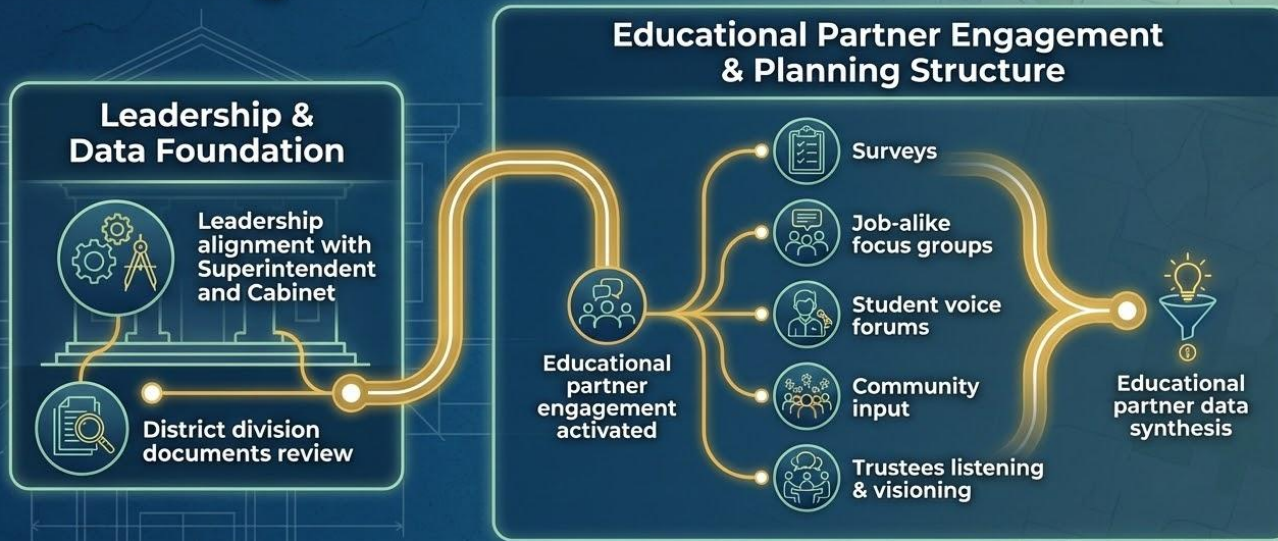
Graduate Profile & Strategic Roadmap

Building OUSD Strategic Roadmap: Vision to Implementation



Graduate Profile & Strategic Roadmap

Building OUSD Strategic Roadmap: Building Foundations



Graduate Profile & Strategic Roadmap

Timeline



Board Adopted “Why” Statement

OUSD is striving to transform the district into a competitive, destination-quality system by strategically consolidating resources and modernizing facilities to ensure long-term stability and offer the most innovative, robust programs—advanced academics, visual and performing arts, future ready learning experiences—while ensuring equitable support for every student across all schools to attract and retain students and families.



DRAFT GUIDING PRINCIPLES

1. Ensure access to quality programs across all schools and all neighborhoods
2. Preserve high-quality academic and extracurricular programs that attract and retain student enrollment
3. Maintain safe, clean and modern facilities
4. Create and preserve programs that foster student choice and innovation
5. Ensure long-term financial sustainability
6. Minimize disruption to families
7. Promote transparency in decision-making

DATA SCENARIO

School	Total Classrooms	GenEd/ Inclusion Classrooms	SDC Classrooms	Current Enrollment	Projected Enrollment	Change	% Change	Transfers Out	Transfers In
School A	29	21	2	345	426	+81	+23.5%	8%	18%
School B	27	23	1	473	401	-72	-15.2%	53%	50%
School C	28	19	3	360	306	-54	-15.0%	36%	19%
School D	30	21	1	363	294	-69	-19.0%	49%	37%
School E	13	7	3	200	210	+10	+5.0%	15%	35%
School F	15	7	1	165	170	+5	+3.0%	35%	14%
School G	19	14	2	303	388	+85	+28.1%	22%	13%
School H	32	16	2	313	299	-14	-4.5%	32%	16%
School I	27	22	1	483	406	-77	-15.9%	48%	12%
School J	17	10	3	283	203	-80	-28.3%	27%	11%
School K	20	10	2	250	220	-30	-12.0%	7%	13%
School L	22	15	3	361	263	-98	-27.1%	38%	48%
School M	26	19	3	341	230	-111	-32.6%	9%	25%
School N	22	14	2	250	261	+11	+4.4%	20%	6%
School O	22	12	3	230	212	-18	-7.8%	44%	39%
School P	16	11	1	223	199	-24	-10.8%	17%	38%
School Q	26	17	1	398	360	-38	-9.5%	7%	41%
School R	17	10	2	213	177	-36	-16.9%	21%	19%
Total				5,554	5,025	-529	-9.5%		

- Draft Guiding Principles and Weightings



March 10

Joint Communication

What are the next steps?



CORE MESSAGE

What did we work on today?

What are we leaving with?

Coalition Agreement on Core Message

Summary of Coalition work to date
(Succinct talking points)

Next Steps

March 10, 2026

Draft Guiding Principles and Weightings

March 26, 2026

Report to Board of Education

Fall-Winter 2026-2027

Apply Guiding Principles

Evaluate Scenarios