



RICHMOND COUNTY SCHOOLS

February 12, 2026

Central Office Meeting: Comprehensive Overview



Public Comment

Community Voice and Contribution

Public Comment Guidelines

Comment Card Required

To speak, you must complete and submit a public comment card. State your name, city of residence, and zip code.

One Opportunity Per Person

Each individual may speak once during the meeting.

Time Limit

Speakers are limited to 3 minutes each. Please be prepared to conclude when your time is called.

Respectful Conduct

No shouting, personal attacks or disruptive behavior. Please remain courteous to all participants.

Public Comment

Community Voice and Contribution

Public Comment Guidelines (cont.)

Use the Microphone

Please speak clearly into the microphone so your audio is picked up and understood.

Questions

Questions can be answered using our website at rcboe.org/masterplan or you can speak with school officials after the public comment period. Staff are located around the room at designated department signs.

Focus on the Plan

Comments should address the presented plan. Off-topic remarks may be ended by the moderator.

Moderator's Role

The moderator will enforce these rules to ensure everyone has a fair chance to be heard.

Stay Updated

Visit Our Master Plan Web Page

HOME > COMMUNITY > COMPREHENSIVE FACILITIES PLAN

Comprehensive Facilities Plan

About Us +

Students & Families +

Academics & Curriculum +

Staff & Departments +

News & Events +

Community -

Family & Community Engagement

[Comprehensive Facilities Plan](#) ▾

2026 Facilities Master Plan FAQ

Contact Us

Community Partnerships

Quick Links

[FREQUENTLY ASKED QUESTIONS](#)

[PUBLIC HEARING LIVESTREAM](#)

[SHARE YOUR FEEDBACK](#)

[2026 PROPOSED PLAN SCHOOL ZONE LOCATOR](#)

Upcoming Events

Feb 9 2026

- **Facilities Master Plan Public Hearing: Barton Chapel**



Scan Or Visit
Rcboe.org/masterplan

Looking Back to Move Forward (2023-24)

Community Engagement



4 
Task Force Meetings

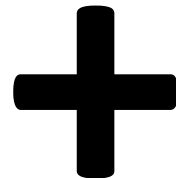
One
Community-
Wide
Meeting



3 Virtual
Meetings



6
PUBLIC HEARINGS



Additional meetings in
impacted communities

**2 Community
Surveys**

259

Responses to
survey #1

1,904

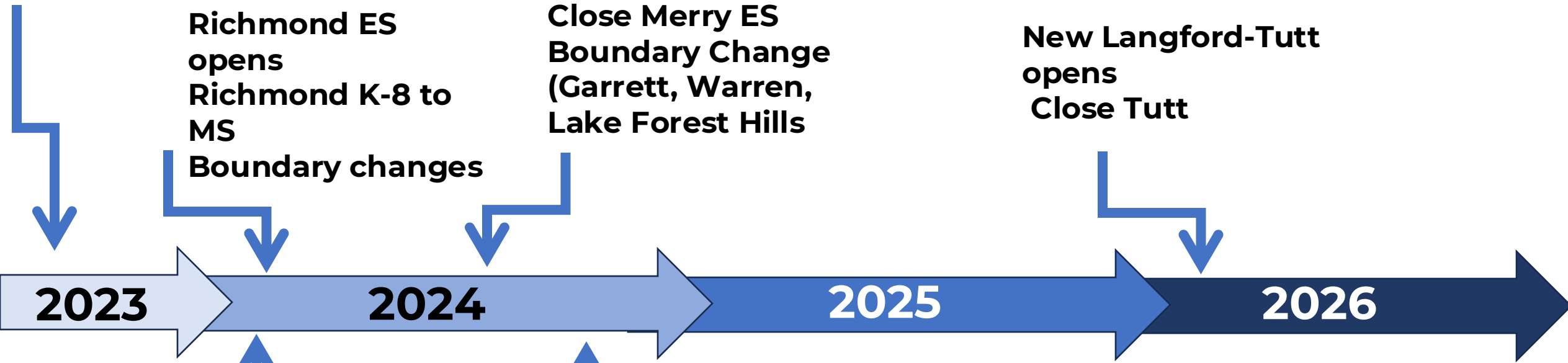
Responses to
survey #2



Looking Back to Move Forward

Key Milestones from 2023 to Today

FMP Process begins



Richmond ES opens
Richmond K-8 to MS
Boundary changes

Close Merry ES
Boundary Change
(Garrett, Warren, Lake Forest Hills)

New Langford-Tutt opens
Close Tutt

Belair MS opens
Richmond K-8 to ES
Boundary changes (Langford-Tutt)
New Langford Groundbreaking

Spirit Creek MS Closes
Boundary Change: to Hephzibah, Pine Hill & Richmond Hill



Looking Back to Move Forward

Outlook 2023

Resources divided amongst too many facilities

Aging school buildings, away from the students they serve

Declining enrollment

Inequitable program distribution

District unable to capture maximum state funding for staff and programs



MAXIMIZING STAFFING RESOURCES

Minimum Staffing

ELEMENTARY SCHOOLS <450 Enrollment



Principal



Half A. Principal



Half Nurse



Guidance



Media Specialist



Art Teacher



Music Teacher



P.E. Teacher



Principal



A. Principal



Nurse



Guidance



Art Teacher



Band Teacher



P.E. Teacher



CTAE



Advanced World Language



Media Specialist

HIGH SCHOOLS <1,000 Enrollment



Principal



A. Principal



A. Principal



Guidance



Guidance



Media Specialist



Nurse



A. Principal



A. Principal



Guidance



Guidance



Media Specialist



P.E. Teacher



P.E. Teacher



P.E. Teacher



Art Teacher



Band Teacher



Choir Teacher



P.E. Teacher



Advanced World Language

CTAE



MAXIMIZING STAFFING RESOURCES

Maximum Staffing

ELEMENTARY SCHOOLS
> 450 Enrollment



Principal



Half
A. Principal



Half Nurse



Guidance



Media Specialist



Pick 1 of the 3



Principal



A. Principal



Nurse



Guidance



Art Teacher



Band Teacher



P.E. Teacher



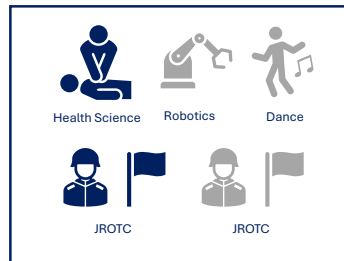
P.E. Teacher



Advanced World Language



Media Specialist



CTAE

HIGH SCHOOLS
> 1,500 Enrollment



Principal



A. Principal



A. Principal



Guidance



Guidance



Media Specialist



Nurse



A. Principal



A. Principal



Guidance



Guidance



Media Specialist



P.E. Teacher



P.E. Teacher



P.E. Teacher



Art Teacher



Band Teacher



Choir Teacher



P.E. Teacher



Advance World Language



Health Science



Robotics



Dance



JROTC



CTAE



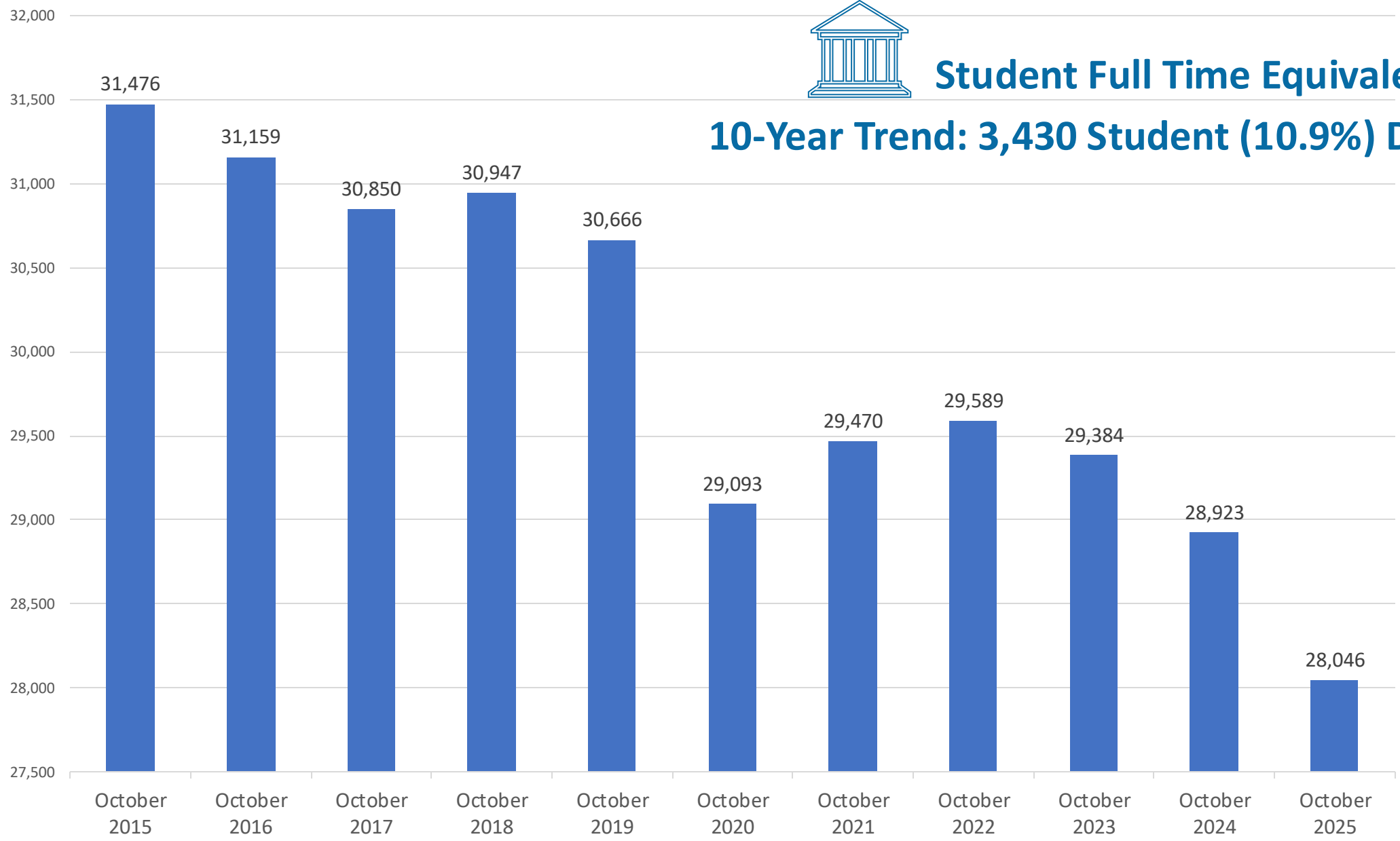
JROTC





Student Full Time Equivalent (FTE)

10-Year Trend: 3,430 Student (10.9%) Decrease



State of the Schools: Background Information

Capacity vs Enrollment

	Capacity (Seats)	Enrollment (Fall 2025 FTE)	Capacity Utilization	Empty Seats
Elementary	18,275	13,820	75.6%	4,455
Middle	7,650	6079	79.4%	1,571
High	13,225	8147	61.6%	5,078
System Total:	39,150	28,046	71.6%	(11,104)

Demographics

Survival Ratios/Births

Year	Births	Population	Birth Rate	Enrollment	Enrollment to Population %
2014	2,935	201,448	1.457%	30,550	15.17%
2015	2,884	201,639	1.430%	30,201	14.98%
2016	2,905	202,179	1.437%	29,853	14.77%
2017	2,872	201,965	1.422%	29,544	14.63%
2018	2,828	202,027	1.400%	29,662	14.68%
2019	2,837	202,639	1.400%	29,398	14.51%
2020	2,691	202,079	1.332%	28,295	14.00%
2021	2,634	205,673	1.281%	28,191	13.71%
2022	2,592	206,640	1.254%	28,276	13.68%
2023	2,597	205,414	1.264%	28,032	13.65%
2024	2,596	206,303	1.258%	27,711	13.43%

- Population within the county has increased by nearly 5,000 (2.4%) since 2014
- At the same time, births, birth rates, and RCSS enrollment have declined

Demographics

Historical Enrollment

Grade	2016-17	2017-18	2018-19	2019-20	2020-21	2021-22	2022-23	2023-24	2024-25	2025-26
Pre-Kindergarten	1,306	1,306	1,285	1,268	798	1,279	1,313	1,352	1,212	1,147
Kindergarten	2,406	2,373	2,360	2,349	1,996	2,290	2,202	2,186	2,174	2,060
Grade 1	2,445	2,344	2,412	2,338	2,260	2,060	2,332	2,214	2,217	2,142
Grade 2	2,541	2,445	2,334	2,378	2,214	2,242	2,080	2,322	2,195	2,209
Grade 3	2,473	2,526	2,463	2,332	2,291	2,215	2,249	2,011	2,265	2,161
Grade 4	2,584	2,395	2,453	2,351	2,229	2,188	2,123	2,206	1,968	2,180
Grade 5	2,339	2,518	2,412	2,415	2,249	2,196	2,177	2,118	2,184	1,940
Grade 6	2,110	2,231	2,456	2,345	2,296	2,243	2,132	2,116	2,047	2,096
Grade 7	2,132	2,091	2,269	2,417	2,268	2,261	2,215	2,094	2,053	1,996
Grade 8	2,163	2,077	2,113	2,221	2,378	2,262	2,219	2,192	2,076	2,010
Grade 9	2,786	2,623	2,516	2,558	2,414	2,617	2,649	2,521	2,453	2,304
Grade 10	2,140	2,299	2,208	2,047	2,268	2,214	2,319	2,329	2,236	2,174
Grade 11	2,015	1,934	2,048	1,979	1,889	2,039	1,986	2,114	2,082	2,062
Grade 12	1,719	1,688	1,618	1,668	1,543	1,364	1,593	1,609	1,761	1,681
K-12	29,853	29,544	29,662	29,398	28,295	28,191	28,276	28,032	27,711	27,015

- Enrollment has declined by 2,997 students from 2016-17 (-9.6%)
- 2025-26 is lowest non-covid Kindergarten in last 10 years

Grade	2016-17	2017-18	2018-19	2019-20	2020-21	2021-22	2022-23	2023-24	2024-25	2025-26
Pre-K	1,306	1,306	1,285	1,268	798	1,279	1,313	1,352	1,212	1,147
K-5	14,788	14,601	14,434	14,163	13,239	13,191	13,163	13,057	13,003	12,692
6-8	6,405	6,399	6,838	6,983	6,942	6,766	6,566	6,402	6,176	6,102
9-12	8,660	8,544	8,390	8,252	8,114	8,234	8,547	8,573	8,532	8,221
PK-12	31,159	30,850	30,947	30,666	29,093	29,470	29,589	29,384	28,923	28,162



Demographics

Projected Enrollment

Grade	2026-27	2027-28	2028-29	2029-30	2030-31	2031-32	2032-33	2033-34	2034-35	2035-36
Pre-Kindergarten	1,212	1,212	1,212	1,212	1,212	1,212	1,212	1,212	1,212	1,212
Kindergarten	2,026	1,993	1,997	1,996	1,996	1,996	1,996	1,996	1,996	1,996
Grade 1	2,078	2,035	2,002	2,006	2,005	2,005	2,005	2,005	2,005	2,005
Grade 2	2,176	2,071	2,028	1,995	1,999	1,998	1,998	1,998	1,998	1,998
Grade 3	2,169	2,137	2,034	1,992	1,959	1,963	1,962	1,962	1,962	1,962
Grade 4	2,090	2,103	2,072	1,972	1,931	1,899	1,903	1,902	1,902	1,902
Grade 5	2,175	2,070	2,083	2,052	1,953	1,913	1,881	1,885	1,884	1,884
Grade 6	1,887	2,105	2,004	2,016	1,986	1,890	1,852	1,821	1,825	1,824
Grade 7	2,066	1,845	2,058	1,959	1,971	1,941	1,847	1,810	1,780	1,784
Grade 8	1,973	2,037	1,819	2,029	1,932	1,943	1,914	1,821	1,785	1,755
Grade 9	2,277	2,220	2,292	2,047	2,283	2,174	2,186	2,153	2,049	2,008
Grade 10	2,072	2,020	1,969	2,033	1,816	2,025	1,928	1,939	1,910	1,818
Grade 11	1,975	1,881	1,833	1,787	1,845	1,648	1,838	1,750	1,760	1,734
Grade 12	1,635	1,591	1,515	1,477	1,440	1,486	1,328	1,481	1,410	1,418
K-12	26,599	26,108	25,706	25,361	25,116	24,881	24,638	24,523	24,266	24,088

- Enrollment is projected to decline 1,834 students from 2025-26 to 2030-31 (6.5%)

Grade	2026-27	2027-28	2028-29	2029-30	2030-31	2031-32	2032-33	2033-34	2034-35	2035-36
Pre-K	1,212	1,212	1,212	1,212	1,212	1,212	1,212	1,212	1,212	1,212
K-5	12,714	12,409	12,216	12,013	11,843	11,774	11,745	11,748	11,747	11,747
6-8	5,926	5,987	5,881	6,004	5,889	5,774	5,613	5,452	5,390	5,363
9-12	7,959	7,712	7,609	7,344	7,384	7,333	7,280	7,323	7,129	6,978
PK-12	27,811	27,320	26,918	26,573	26,328	26,093	25,850	25,735	25,478	25,300



Recommendations for 2026-27

Barton Chapel ES

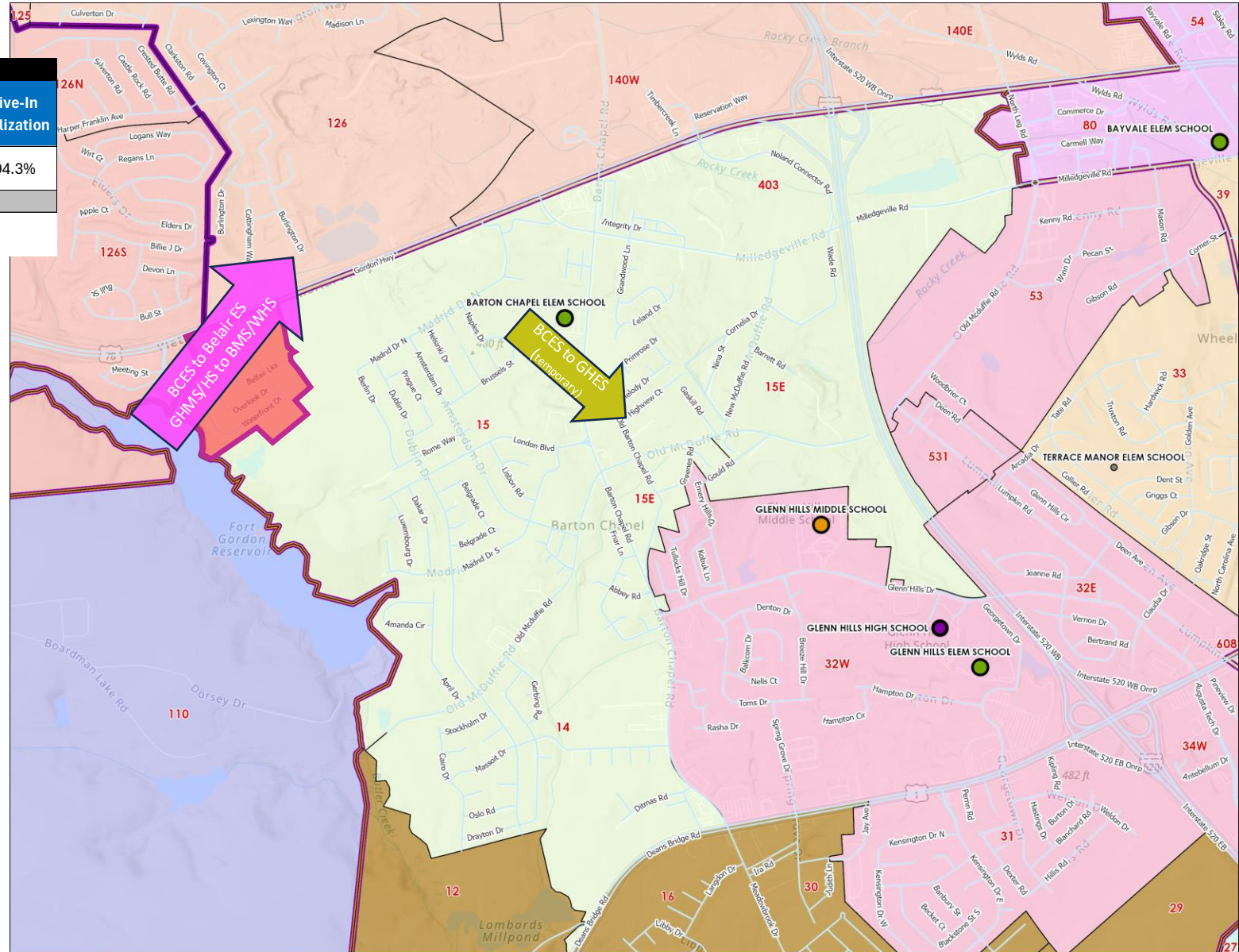
School	Current					Proposed		
	Capacity	2025-26 Live-In	Live-In Utilization	2025-26 Attend	Attend Utilization	Capacity	2026-27 Projected Attend	Live-In Utilization
Barton Chapel ES	598	511	85.5%	399	66.7%			
Glenn Hills ES	575	356	61.9%	301	52.3%	700	660	94.3%
Total	1173	867	73.9%	700	59.7%			

*10 portables would be added to Glenn Hills ES to accommodate Barton Chapel students during construction

**2 Pre-K classes currently at Barton Chapel would be moved to other locations to reduce enrollment at GHES

Barton Chapel ES

- Demolition of existing facility begins at completion of 2025-26 school year, and construction of New Barton Chapel ES begins
- Belfair Lakes subdivision boundary change to Belair ES, Belair MS & Westside HS: 14 PK-12 students
 - Becomes part of NPU 15W
- Remainder of Barton Chapel temporarily moves to consolidate with Glenn Hills ES with 10 portables added
- Two Barton Chapel PK classes moved to nearby elementary schools



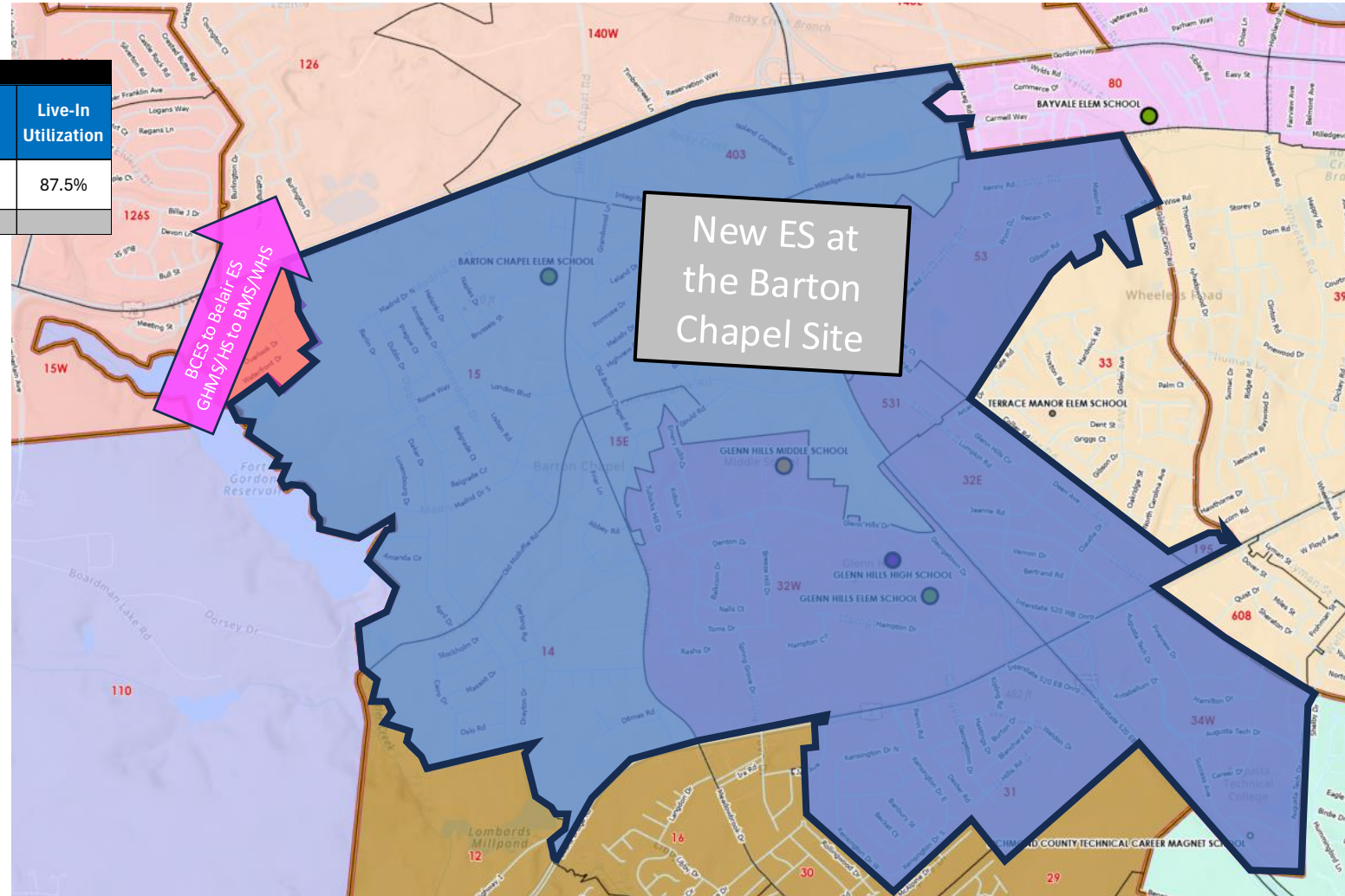
Recommendations for 2028-29

Barton Chapel & Glenn Hills ES

School	Current					Proposed		
	Capacity	2025-26 Live-In	Live-In Utilization	2025-26 Attend	Attend Utilization	Capacity	2026-27 Projected Attend	Live-In Utilization
Barton Chapel ES	598	511	85.5%	399	66.7%	800	700	87.5%
Glenn Hills ES	575	356	61.9%	301	52.3%			
Total	1173	867	73.9%	700	59.7%			

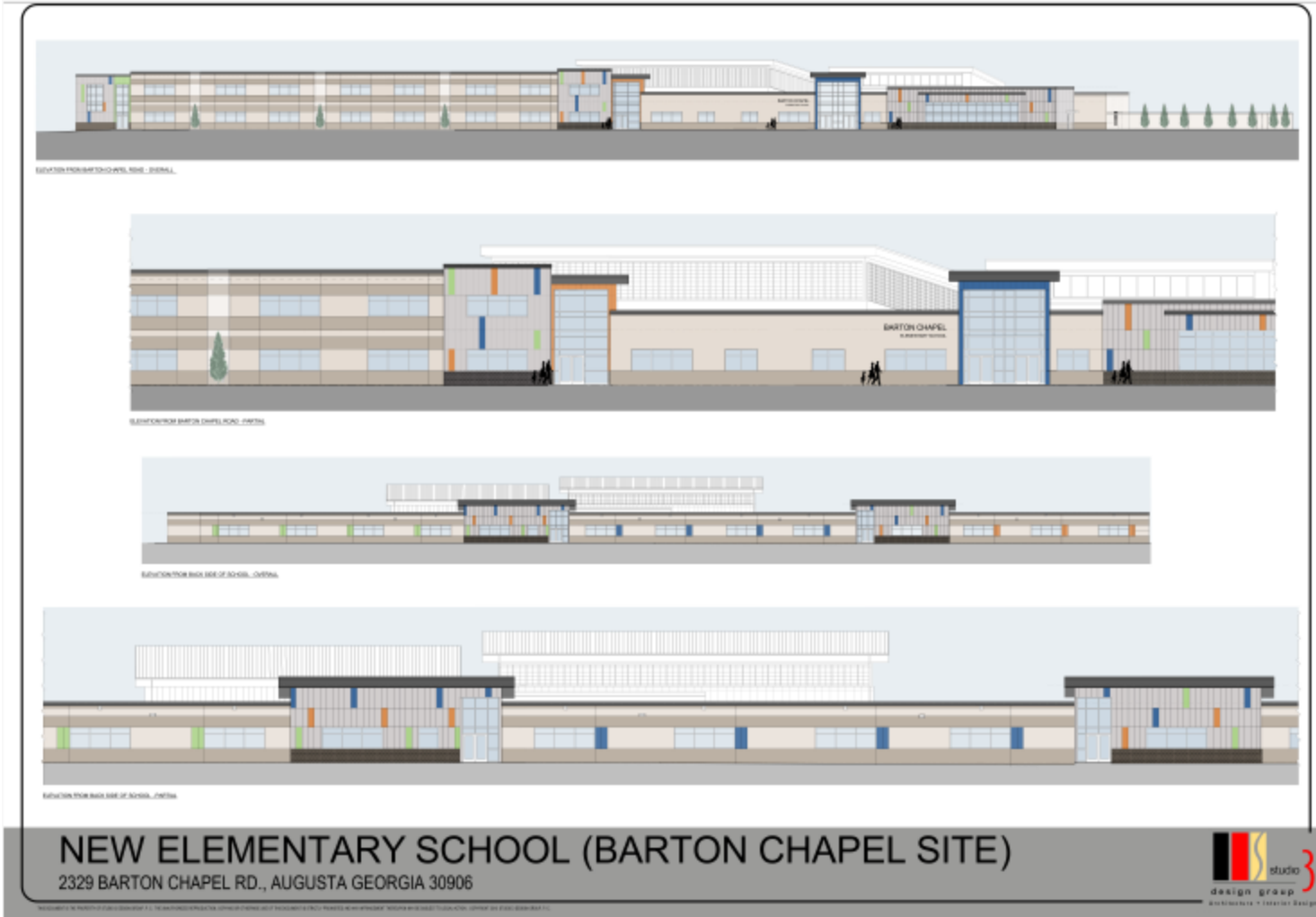
New Barton Chapel ES & Glenn Hills ES Closure

- New Barton Chapel ES opens in Fall 2028
- Glenn Hills ES consolidated into new Barton Chapel ES
- NPU 31, 32E, 32W, 34W, 53, 195, and 531 move from Glenn Hills ES to New Barton Chapel ES: 356 PK-5 students



Envisioning

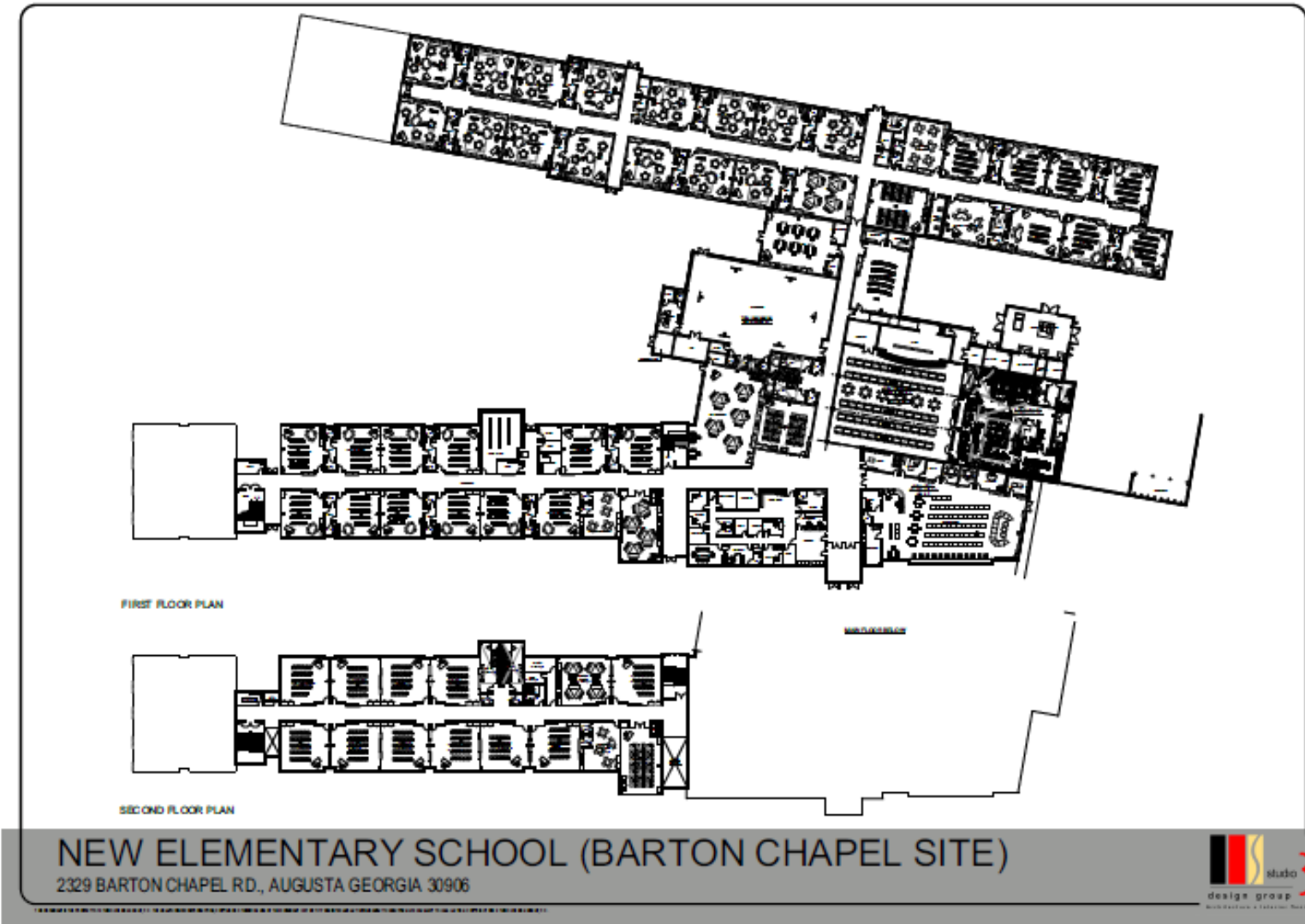
The New Elementary School at the Barton Chapel Site



- \$47.5 million investment
- New Elementary School at the Barton Chapel Site Opens 2028-29

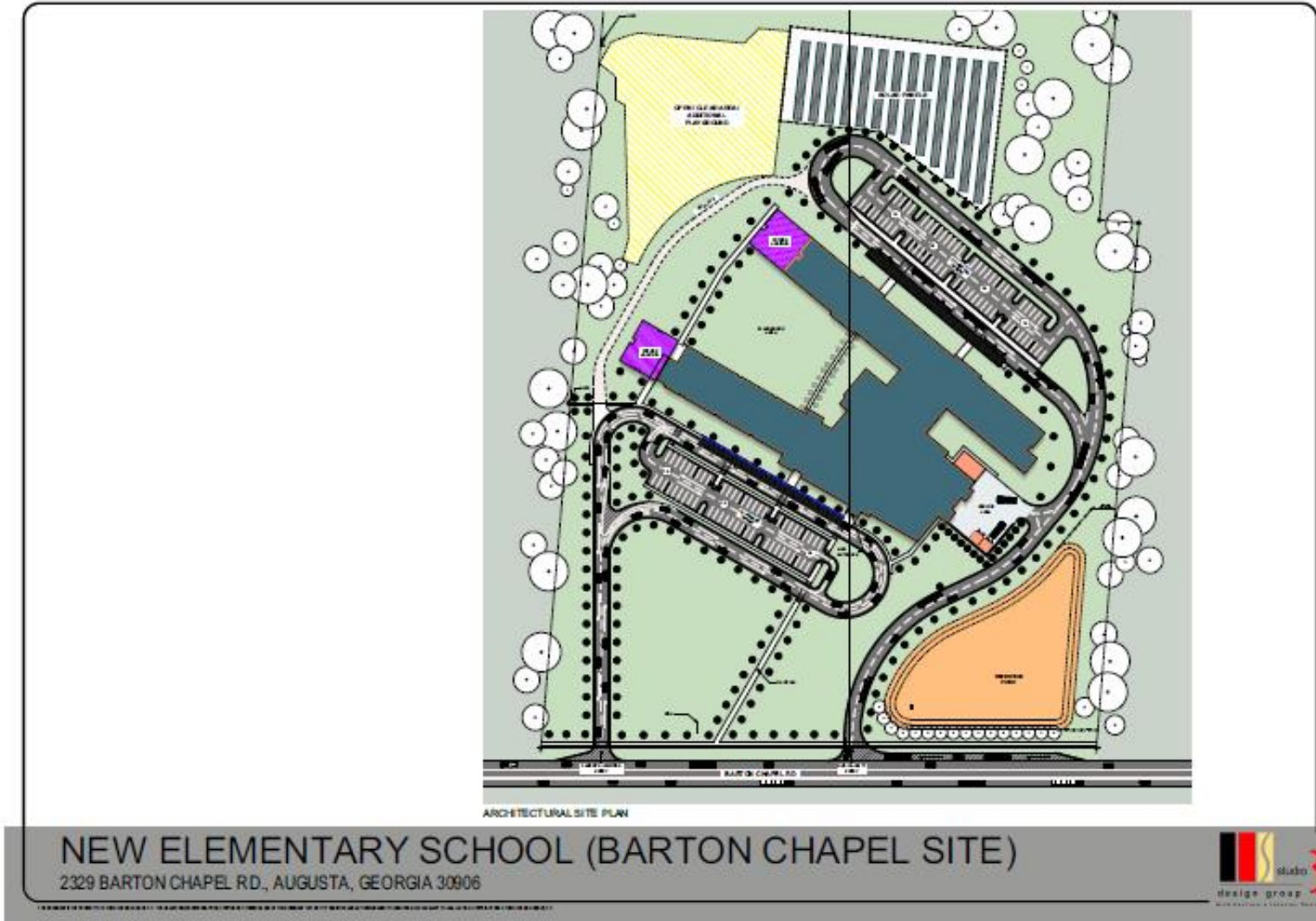
Envisioning

The New Elementary School at the Barton Chapel Site



Envisioning

The New Elementary School at the Barton Chapel Site



What Happens Next

Student Transition

During Construction

- Students transition to Glenn Hills Elementary
- Additional staff resources for transition
 - Examples could include: additional MTSS, social worker and public safety officers.
- 10 additional portables added to accommodate temporary enrollment



What Happens Next - During Construction

Faculty & Staff Transition

Staff:

- Richmond County has a continued need for all faculty and staff.
- Staff would predominantly follow students' temporary move to Glenn Hills, then back to the new school.

Faculty:

- Faculty would predominantly follow students' temporary move to Glenn Hills and back to the new school.



What Happens Next

Student, Faculty & Staff Transition



ELEVATION FROM BACK SIDE OF SCHOOL - OVERALL

After Construction (SY 2028)

- The Consolidated Glenn Hills Elementary Staff and Students will move from Glenn Hills Elementary into the new facility.



What Happens Next

Facilities

Construction Start-up

- Demolition starts this summer, immediately after end of semester
- Construction through June 1, 2028
- Naming Committee formed to select name, mascot and colors.
- Target move-in during summer of 2028.
- Target occupancy starting 2028-2029 school year.



Naming Committee Process

- Process Outlined in RCSS Policy FDC-R (1): Naming of Facilities
 - Discusses the Board's responsibility to name a facility
 - Outlines the process of the Naming Committee to determine a facility's name
- Procedure outlines the development of a naming committee comprised of: Board members, district staff, school staff, parents, community members, local historian (if available) and alumni with close ties to the school.
- Naming Committee will meet a minimum of 2 times.
- At conclusion of Naming Committee meetings, the committee will make a name and mascot recommendation.
- This recommendation will be presented for final approval to the Board of Education by the Cluster Superintendent.



Langford-Tutt Transition

Student, Faculty & Staff Transition

Fall 2026

- Tutt Middle School will close as a middle school at the end of the 2025-2026 SY.
- The consolidated school, named Langford-Tutt, will open for SY 2026-2027. They will be housed in the current Tutt Middle School facility until construction is complete. *We estimate a move in date around December 2026.*
- Students will begin attending Langford-Tutt Middle School at the permanent site second semester of the 2026-2027 SY.



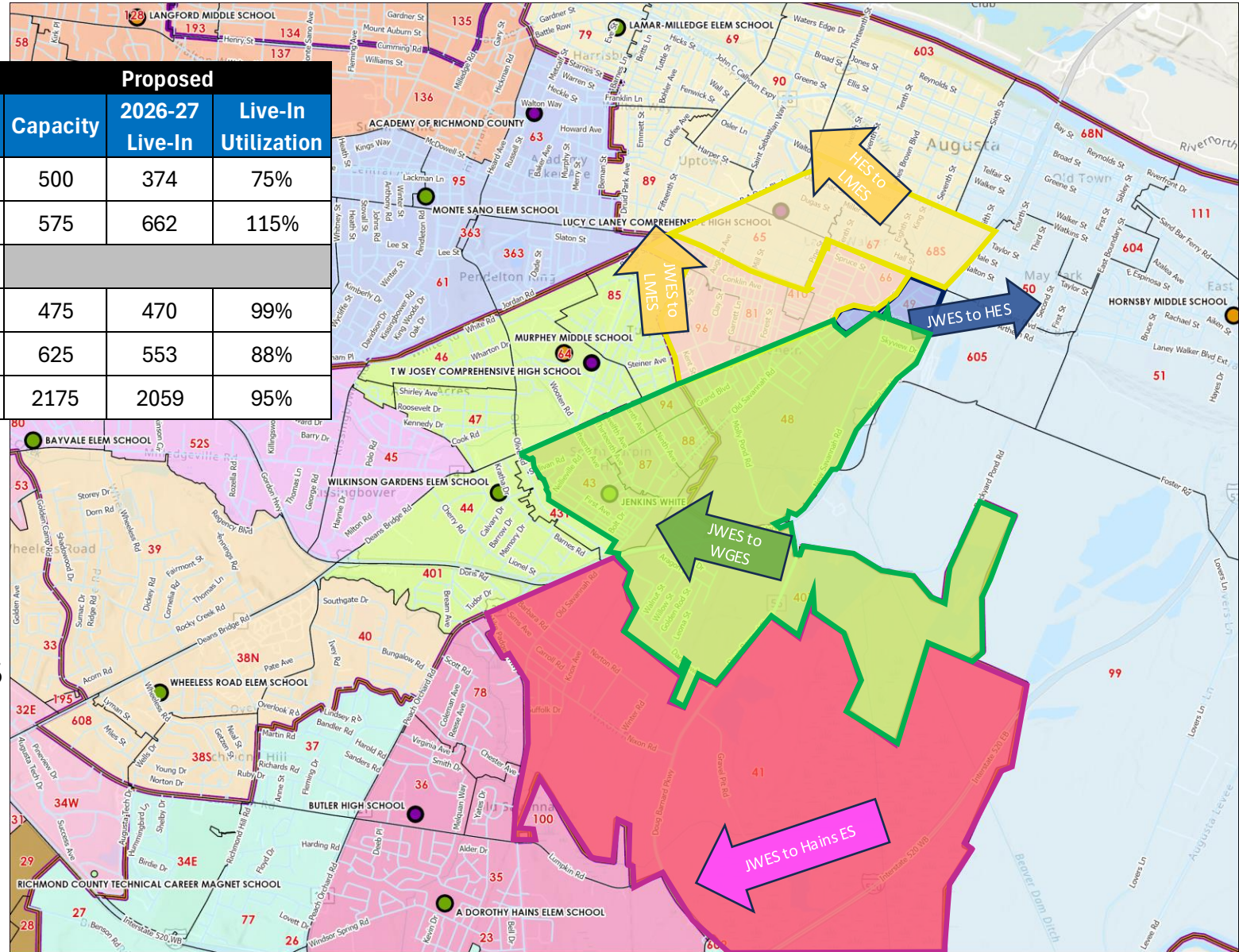
Recommendations for 2026-27

Close Jenkins White ES

School	Current					Proposed		
	Capacity	2025-26 Live-In	Live-In Utilization	2025-26 Attend	Attend Utilization	Capacity	2026-27 Live-In	Live-In Utilization
Hains ES	500	345	69%	430	86%	500	374	75%
Hornsby ES	575	658	114%	519	90%	575	662	115%
Jenkins White ES	575	276	48%	230	40%			
Lamar-Milledge ES	475	326	69%	355	75%	475	470	99%
Wilkinson Gardens ES	625	454	73%	457	73%	625	553	88%
Total	2750	2059	75%	1991	72%	2175	2059	95%

Jenkins White ES Closure

- NPU 41 to Hains ES: 29 PK-5 students
 - Feeder change to RHMS/Butler HS
- NPU 49 to Hornsby ES: 60 PK-5 students
 - No feeder change
- NPU 66, 81, 96, 410 to Lamar Milledge ES: 88 PK-5 students
 - No feeder change
- NPU 43, 48, 87, 88, 94, 407 to Wilkinson Gardens ES: 99 PK-5 students
 - Feeder change to Hornsby MS/Laney HS (NPU 48 already feeds HMS/LHS)



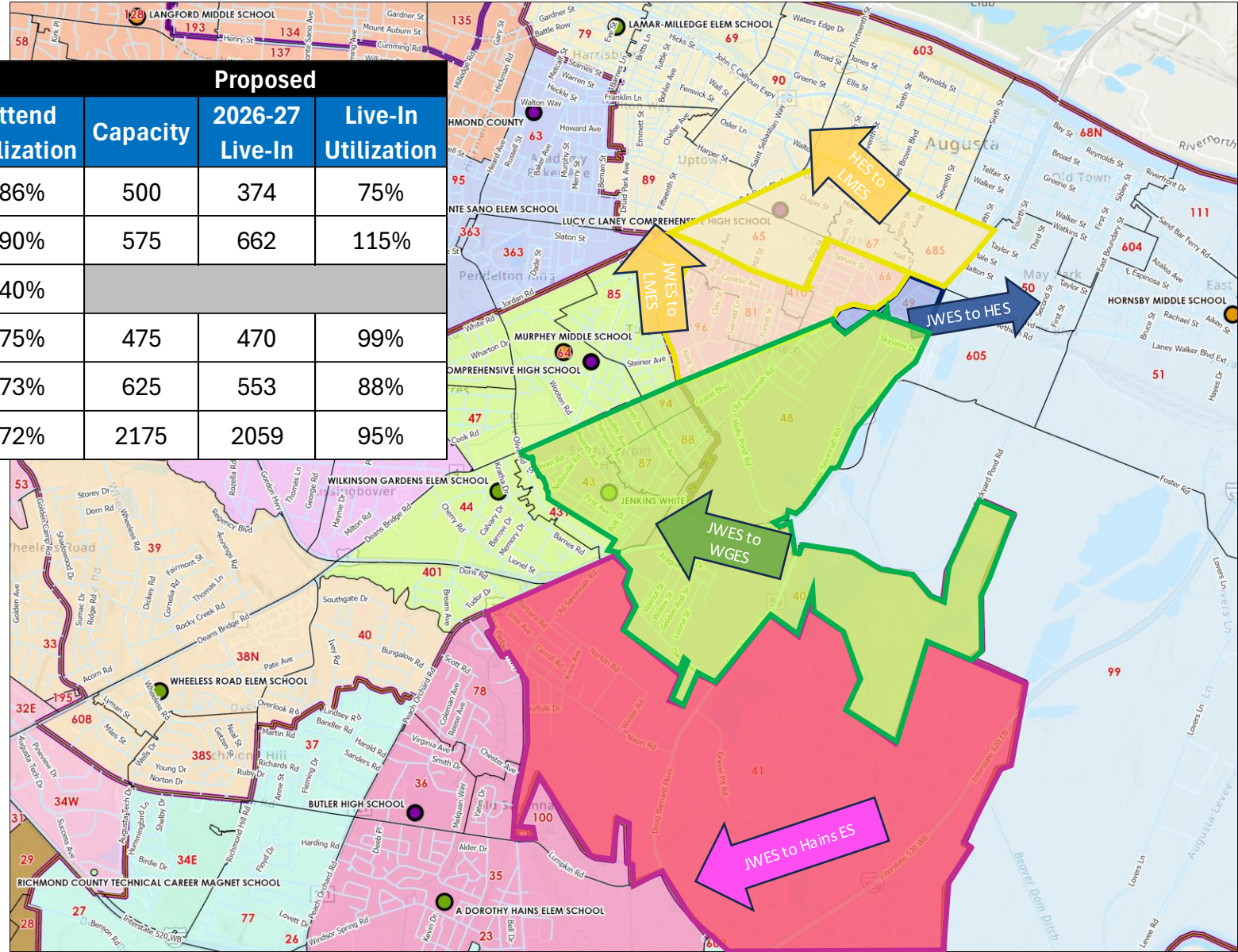
Recommendations for 2026-27

Close Jenkins White ES

School	Current					Proposed		
	Capacity	2025-26 Live-In	Live-In Utilization	2025-26 Attend	Attend Utilization	Capacity	2026-27 Live-In	Live-In Utilization
Hains ES	500	345	69%	430	86%	500	374	75%
Hornsby ES	575	658	114%	519	90%	575	662	115%
Jenkins White ES	575	276	48%	230	40%			
Lamar-Milledge ES	475	326	69%	355	75%	475	470	99%
Wilkinson Gardens ES	625	454	73%	457	73%	625	553	88%
Total	2750	2059	75%	1991	72%	2175	2059	95%

Jenkins White ES Closure (Cont.)

- NPU 47 from Wilkinson Gardens ES to Bayvale ES: 12 PK-5 students
 - Feeder change to Langford-Tutt MS/ARC HS
- NPU 65, 67, 68S from Hornsby ES to Lamar Milledge ES: 56 PK-5 students
 - No feeder change



What Happens Next

Jenkins-White Student Transition

- Families will receive a letter in March notifying them of their zone change.
- Students will be invited to attend an orientation at their new school.
- Jenkins-White will close at the end of the 2025-2026 school year.
- Students will attend their new zoned school beginning in August 2026.



What Happens Next

Jenkins-White Faculty & Staff Transition

Staff:

- Richmond County has a continued need for all faculty and staff.
- Staff would predominantly follow students' move to Wilkinson-Gardens, Lamar-Milledge, and Hornsby ES.

Faculty:

- Faculty would predominantly follow students' move to Wilkinson-Gardens, Lamar-Milledge, and Hornsby ES.



Recommendations for 2026-27

Close Murphey MS

Bayvale ES feeder change to Langford-Tutt MS

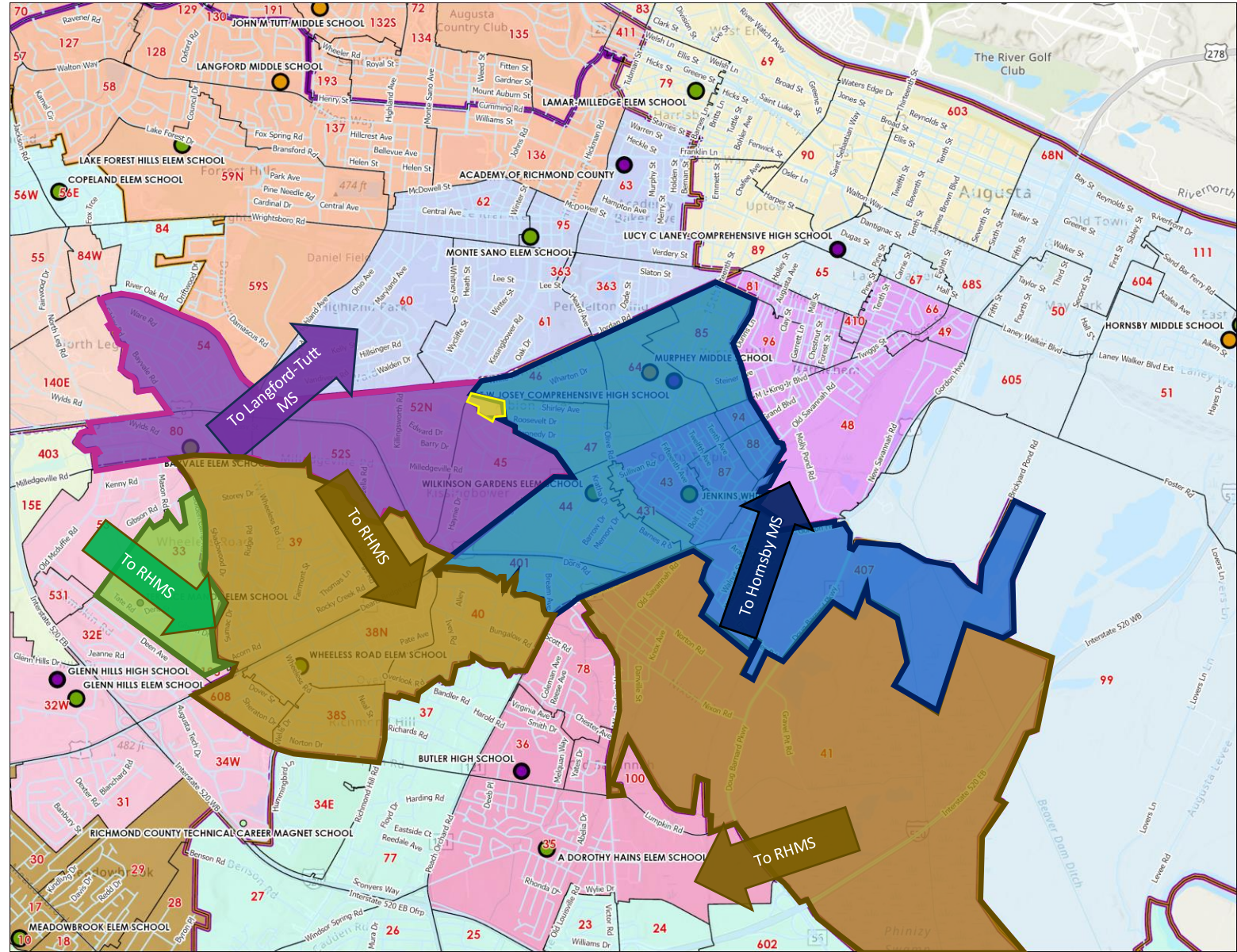
- NPU 45, 47, 52N, 52S, 54, 80 (131 MS students)
- Portion of current Wilkinson Gardens off Kissingbower Rd moves to Bayvale ES for improved transportation efficiency

Wheless Rd ES feeder change to Richmond Hill MS/Butler HS

- NPU 33 from **GHMS/GHHS** (36 MS students, 56 HS students)
- NPU 38N, 38S, 39, 40, 41, 608 from **Murphey MS & Josey HS** (196 MS students)

Wilkinson Gardens ES feeder change to Hornsby MS

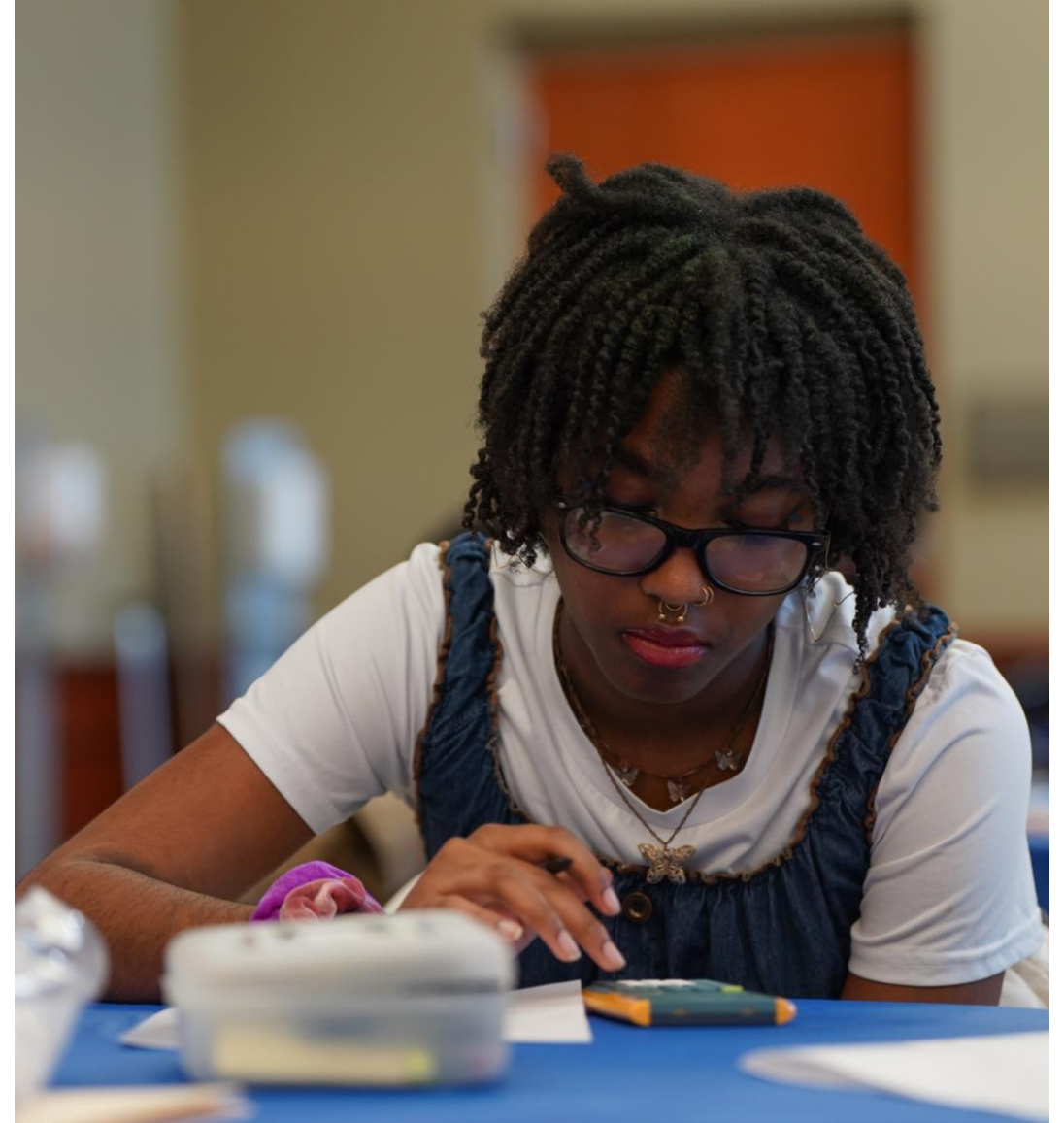
- NPU 43, 44, 46, 64, 85, 87, 88, 94, 401, 407, 431 (212 MS students)



What Happens Next

Murphey Student Transition

- Families will receive a letter in March notifying them of their zone change.
- Students will be invited to attend an orientation at their new school.
- Murphey will close at the end of the 2025-2026 school year.
- Students will attend their new zoned school beginning in August 2026.



What Happens Next

Murphey Faculty & Staff Transition

Staff:

- Richmond County has a continued need for all faculty and staff.
- Staff would predominantly follow students' move to Hornsby MS, Langford-Tutt MS, and Richmond Hill MS.

Faculty:

- Faculty would predominantly follow students' move to Hornsby MS, Langford-Tutt MS, and Richmond Hill MS.



Recommendations for 2026-27

Student Locator Dashboard



Recommendations for 2029-30

TW Josey

Bayvale ES feeder change to Langford-Tutt MS & ARC HS

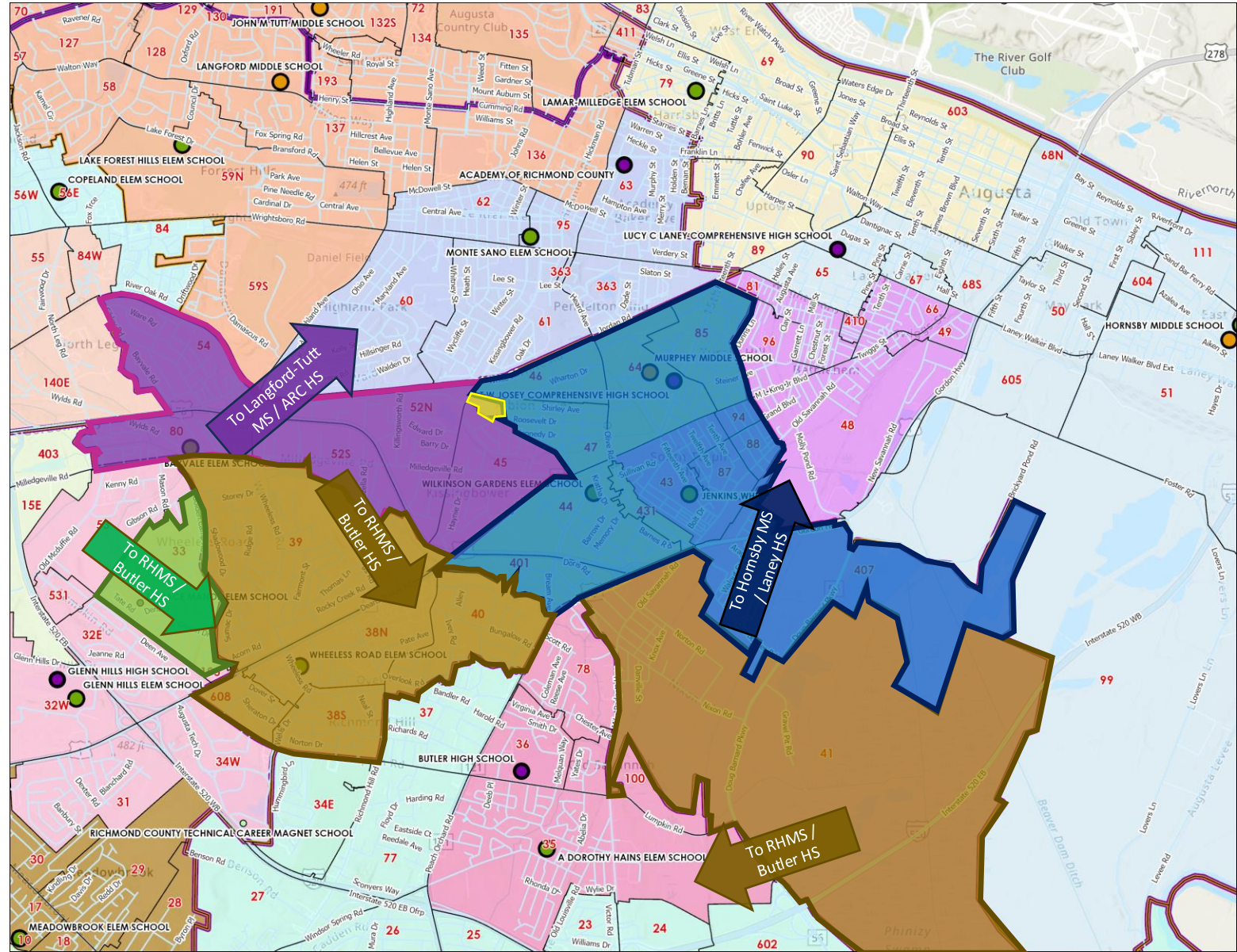
- NPU 45, 47, 52N, 52S, 54, 80 from TW Josey HS (167 HS students)

Wheless Rd ES feeder change to Richmond Hill MS & Butler HS

- NPU 33, 38N, 38S, 39, 40, 41, 608 from TW Josey HS (275 HS students)

Wilkinson Gardens ES feeder change to Hornsby MS & Laney HS

- NPU 43, 44, 46, 64, 85, 87, 88, 94, 401, 407, 431 from TW Josey HS (241 HS students)



What Happens Next

TW Josey Student Transition

- 9-12 grade students will attend TW Josey at the Murphey site for three years (26-27, 27-28, and 28-29).
- All sports and extracurricular activities will continue while students are housed in the Murphey building.
- Students will continue to graduate from TW Josey Comprehensive High School until the end of the 2028-29 school year.
- Students will receive a letter in the spring of 2029 notifying them of their newly zoned high school (ARC, Butler, or Laney).
- Students will attend their new zoned school beginning in August 2029.



What Happens Next

TW Josey Faculty & Staff Transition

Faculty and Staff:

- Richmond County has a continued need for all faculty and staff.
- Staff will remain with the TW Josey students in the Murphey building for three years (26-27, 27-28, and 28-29).
- Staff will be offered positions within the system for the 2029-2030 school year. Any staff wishing to interview for the new College and Career Academy at the TW Josey site will be guaranteed an interview.



Envisioning

Proposed Career Clusters



**TOP STATE
FOR
TALENT**

Georgia is identified as a Top State for Talent. The College & Career Academy will offer a world-class education, innovative workforce programs, and strategic partnerships create a pipeline of skilled professionals ready for high-demand careers that drive economic growth

Potential diplomas available: accelerated career diploma, associate's degree, traditional high school diploma

- Academic Career
- Agriculture
- Construction
- Digital Technology, Cyber Security
- Education
- Energy
- Health & Human Services
 - Healthcare
 - Personal Services (Cosmetology)
- Hospitality, Events, & Tourism
- Heavy Machinery with Expanded Programing



Envisioning

Advantages of the Accelerated Career Diploma

What is the Accelerated Career Diploma

Georgia's Accelerated Career Diploma (formerly Option B) allows 10th-12th grade public high school students to earn a high school diploma while simultaneously completing a technical college credential through the **Technical College System of Georgia**.

- **Required High School Courses (9 credits):** Students must complete 9 core high school courses—2 English, 2 Math, 2 Science, 2 Social Studies, and 1 Health/PE—along with EOC exams.
- **Postsecondary Credentials (Must complete one):** Associate of Applied Science (AAS degree), One Technical College Diploma, or Two Technical Certificates of Credit (TCCs) in a specific, approved career pathway (e.g., HVAC, welding).



Envisioning

How is the College & Career Academy at the TW Josey Site Distinctive?

- Community inclusive
 - Early learning center
 - Working restaurant
- Athletics & Clubs - Infrastructure for major sports to exist alongside College & Career programming.
- Carl Vinson Institute (UGA) – Findings underscored the need for a program like the College & Career Center.
- Additional opportunities for community and industry partnerships
- Transportation for students will be provided using our current specialized programs magnet shuttles (ex: Magnet Schools, International Baccalaureate at ARC, and Advanced Placement Academy at Laney HS).



Envisioning

Who will attend the College and Career Academy at the TW Josey Site?

- The proposed school will open in the Fall of 2029 for interested 9-12th grade students.
- This will be a choice program for interested students (no testing).
- Programming will incorporate students from the current Performance Learning Center, Learn from Home, Marion E. Barnes Career Center, and the Cyber Academy at RCTCM. Currently, there are 431 students in these programs.
- Current TW Josey students who would like to participate.
- Comprehensive HS Students who would like to attend the evening CTAE sessions from 4:00-6:00pm.



Envisioning

Who selected the PROPOSED career clusters?

- Using information from the Carl Vinson Institute study in 2023-2024, high demand career clusters were considered. Costs of the labs, availability of instructors, and access to higher future earnings were considered.
- A College and Career Academy Focus Group met seven times in the fall of 2025 to continue planning and design elements. The focus group consisted of high school principals, high school assistant principals, high school counselors, high school CTAE instructors, central office staff from CTAE and Teaching & Learning, senior leadership, and our architectural and design team.
- Focus Group members visited external locations and conducted research.
- No FINAL decisions have been made on the career clusters. The proposal is a concept design.



What Happens Next

Facilities

Construction Start-up

- Demolition of the current TW Josey facility starts this summer.
- Construction through summer of 2029.
- Naming Committee formed to select name, mascot and colors.
- Target move-in during summer of 2029.
- Target occupancy starting 2029-2030 school year.



Naming Committee Process

- Process Outlined in RCSS Policy FDC-R (1): Naming of Facilities
 - Discusses the Board's responsibility to name a facility
 - Outlines the process of the Naming Committee to determine a facility's name
- Procedure outlines the development of a naming committee comprised of: Board members, district staff, school staff, parents, community members, local historian (if available) and alumni with close ties to the school.
- Naming Committee will meet a minimum of 2 times.
- At conclusion of Naming Committee meetings, the committee will make a name and mascot recommendation.
- This recommendation will be presented for final approval to the Board of Education by the Cluster Superintendent.



What Happens Next

Scenario: Murphey Student Experience

Scenario 1: 6th Grade Student living in the Wheelless Road Attendance Zone attending Murphey today.

- 6th Grade (25-26): Murphey Middle School
- 7th Grade (26-27): Richmond Hill MS
- 8th Grade (27-28): Richmond Hill MS
- 9th Grade (28-29): TW Josey HS at Murphey site
- 10th Grade (29-30): Butler HS **or** College and Career Academy at TW Josey site



What Happens Next

Scenario: Murphey Student Experience

Scenario 2: 6th Grade Student living in the Bayvale Attendance Zone attending Murphey today.

- 6th Grade (25-26): Murphey Middle School
- 7th Grade (26-27): Langford-Tutt MS
- 8th Grade (27-28): Langford-Tutt MS
- 9th Grade (28-29): TW Josey HS at Murphey site
- 10th Grade (29-30): ARC HS **or** College and Career Academy at TW Josey site



What Happens Next

Scenario: Murphey Student Experience

Scenario 3: 6th Grade Student living in the Wilkinson-Gardens ES Attendance Zone attending Murphey today.

- 6th Grade (25-26): Murphey Middle School
- 7th Grade (26-27): Hornsby MS
- 8th Grade (27-28): Hornsby MS
- 9th Grade (28-29): TW Josey HS at Murphey site
- 10th Grade (29-30): Laney HS **or** College and Career Academy at TW Josey site



What Happens Next

Athletics: 2026-2028 GHSA Region Alignment

4-AA (11)	4-AAA (8)	1-AAAAA (8)
Aquinas	Burke County	Benedictine (142 mi)
Davidson*	Butler	Evans
Glenn Hills	Cross Creek	Groves (118 mi)
Jasper County (113 mi)	Hephzibah	Jenkins (142 mi)
Jefferson County	Morgan County (88.7 mi)	Richmond Academy
Johnson*	Thomson	Statesboro (83.8 mi)
Josey	Washington County	Ware County (177 mi)
Laney	Westside	Wayne County (150 mi)
Putnam County (89.5 mi)		
Social Circle (108 mi)		
RCTCM*		

← Could be AAA in 29-30

* Schools Not Playing Varsity Football

What Happens Next

Student Transition: Athletics

GHSA Guidelines for Transferring Students

- All first-time 9th graders, regardless of their zone who chose to attend any school via the Choice Program (HB 251) are automatically eligible at their chosen school.
- Students in grades 9th, 10th & 11th grade who are transferred from one school attendance area to another school attendance area by a mandate of the local board of education maintain their eligibility.
- When a student does not meet the standards of eligibility per the GHSA transfer rules, a Hardship Application may be filed by an administrator of that member school.



What Happens Next

Scenario: TW Josey Student Experience

Scenario 1: 9th Grade Student living in the Wheelless Road Attendance Zone attending TW Josey at the Murphey site.

- 9th Grade: Eligible to play for TW Josey in 2026-2027.
- 10th Grade: Eligible to play for TW Josey in 2027-2028.
- 11th Grade: Eligible to play for TW Josey in 2028-2029.
- 12th Grade: Eligible to play for **Butler or NEW SCHOOL** in 2029-2030.



What Happens Next

Scenario: TW Josey Student Experience

Scenario 2: 9th Grade Student living in the Bayvale Attendance Zone attending TW Josey at the Murphey site.

- 9th Grade: Eligible to play for TW Josey in 2026-2027.
- 10th Grade: Eligible to play for TW Josey in 2027-2028.
- 11th Grade: Eligible to play for TW Josey in 2028-2029.
- 12th Grade: Eligible to play for **ARC or NEW SCHOOL** in 2029-2030.



What Happens Next

Scenario: TW Josey Student Experience

Scenario 3: 9th Grade Student living in the Wilkinson Gardens Attendance Zone attending TW Josey at the Murphey site.

- 9th Grade: Eligible to play for TW Josey in 2026-2027.
- 10th Grade: Eligible to play for TW Josey in 2027-2028.
- 11th Grade: Eligible to play for TW Josey in 2028-2029.
- 12th Grade: Eligible to play for **Laney or NEW SCHOOL** in 2029-2030.



What Happens Next

Scenario: TW Josey Student Experience

Scenario 4: 9th Grade Student living OUTSIDE the TW Josey Attendance Zone attending TW Josey at the Murphey site (ex: HB 251 from Cross Creek).

- 9th Grade: Eligible to play for TW Josey in 2026-2027.
- 10th Grade: Eligible to play for TW Josey in 2027-2028.
- 11th Grade: Eligible to play for TW Josey in 2028-2029.
- 12th Grade: Eligible to play for the NEW SCHOOL but **INELIGIBLE*** to play at their zoned school (ex: Cross Creek) in 2029-2030.

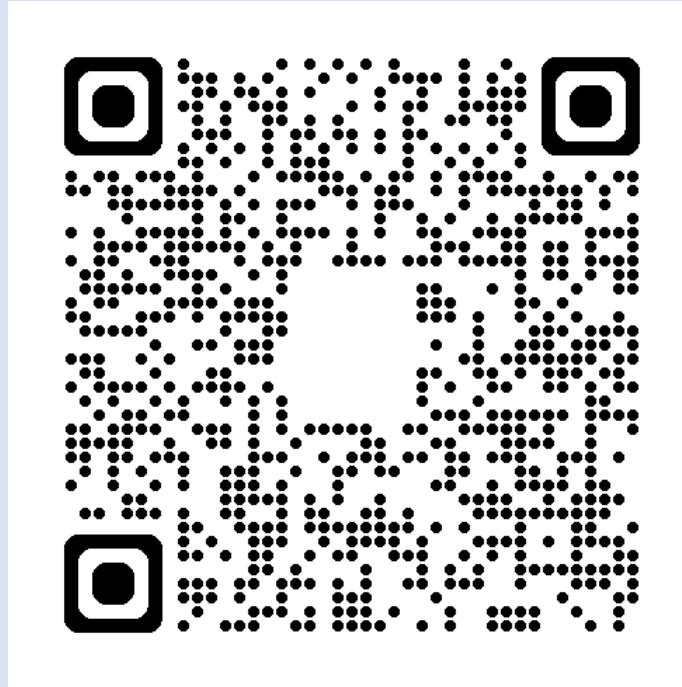
(*can apply for a hardship waiver)



Recommendations for 2029-2030

Josey

Student Locator Dashboard



Next Steps

Approval & Phased Implementation

January 15
February 9
February 12

Public Hearings
& Board
Consideration

Dec 17-Feb 22

Board Review

February 23

Board Vote

February-May

Implementation:
*Staffing,
Transport,
Programs*

Forum
Review

High School
Task Force

June & Beyond

Phased Rollout
& Planning



Public Comment

Community Voice and Contribution

Public Comment Guidelines

Comment Card Required

To speak, you must complete and submit a public comment card.

One Opportunity Per Person

Each individual may speak once during the meeting.

Time Limit

Speakers are limited to 90 seconds each. Please be prepared to conclude when your time is called

Respectful Conduct

No shouting, personal attacks or disruptive behavior. Please remain courteous to all participants.

Public Comment

Community Voice and Contribution

Public Comment Guidelines (cont.)

Use the Microphone

Please speak clearly into the microphone so your audio is picked up and understood.

Questions

Questions can be answered using our website at rcboe.org/masterplan or you can speak with school officials after the public comment period. Staff are located around the room at designated department signs.

Focus on the Plan

Comments should address the presented plan. Off-topic remarks may be ended by the moderator.

Moderator's Role

The moderator will enforce these rules to ensure everyone has a fair chance to be heard.