



School Feature

F. D. Roosevelt

Elementary School

February 19, 2026

Presented by

Jennie Whitaker, Principal

Jessica Huff, Assistant Principal

Dr. Hoa Le, Assistant Principal



F. D. Roosevelt

Elementary School

Co-Presented by -

Wendy Howard, 5th Grade Teacher

Andrea Carr, ELIRT

Jennifer Bagley, PTA President

Lisa Manalang, Makerspace Lead Teacher

Roosevelt Students

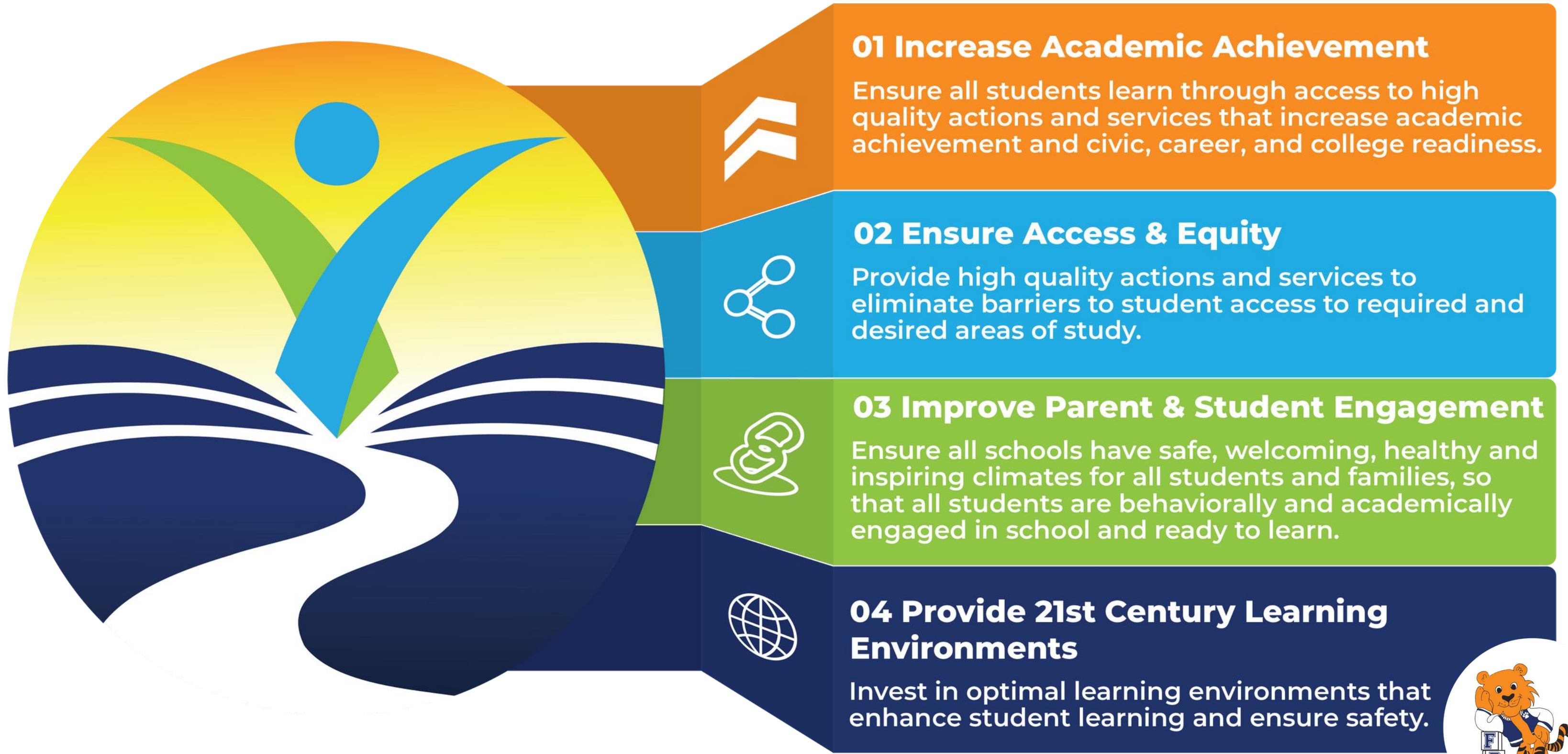
Mayar Alkwardi, 5th Grade

Douaa Elkhadrj, 5th Grade

Jesse Berumen, 5th Grade



District Goals



District Goal 01: Increase Academic Achievement

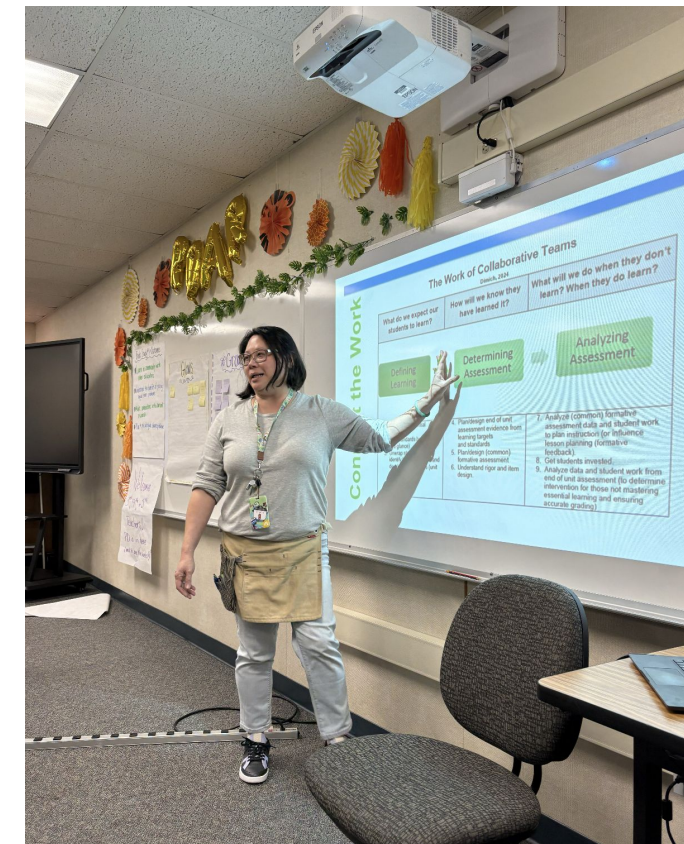
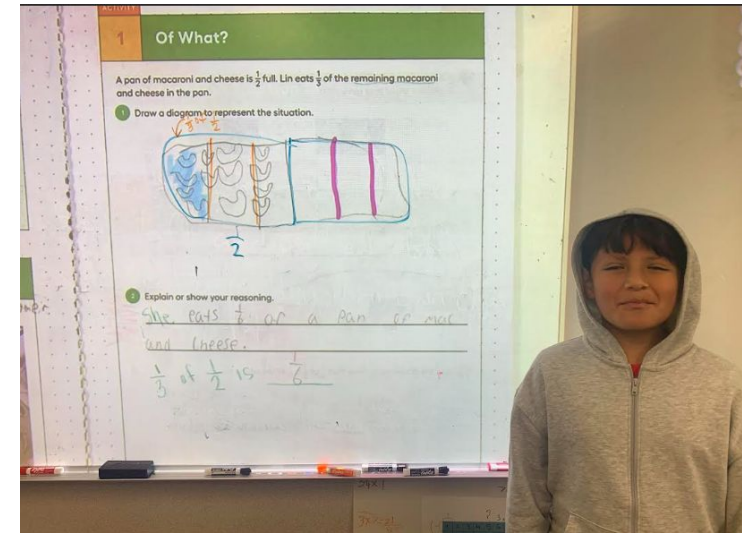
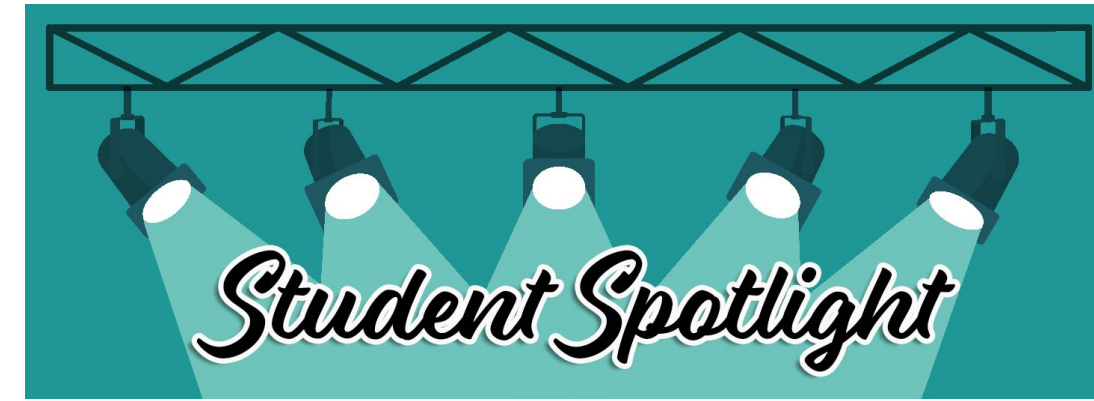
Data Driven

Professional Learning Communities

iReady - Data Walls

Partner Teaching

Essential Standards Work

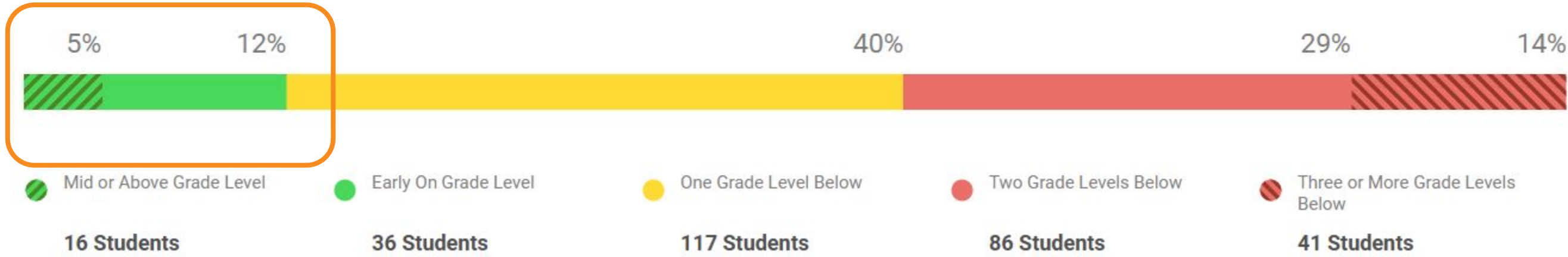


District Goal 01: Increase Academic Achievement

iReady Growth - Reading

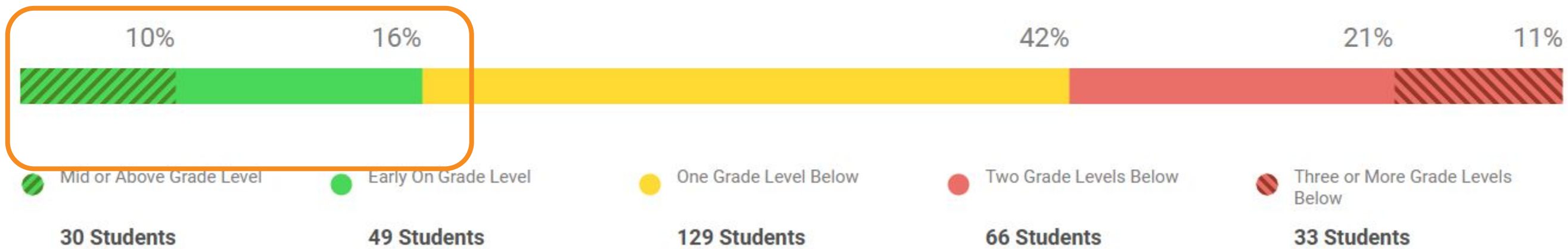
Overall Placement

Students Assessed/Total: 296/357



Overall Placement

Students Assessed/Total: 307/357

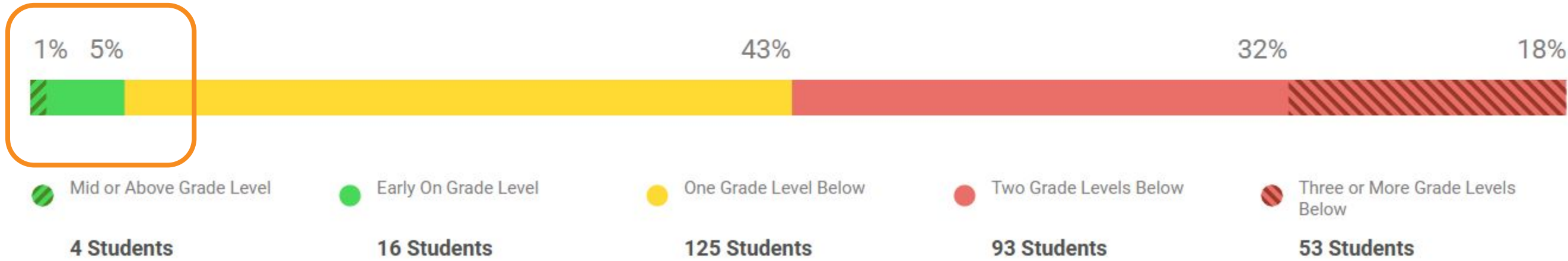


District Goal 01: Increase Academic Achievement

iReady Growth - Math

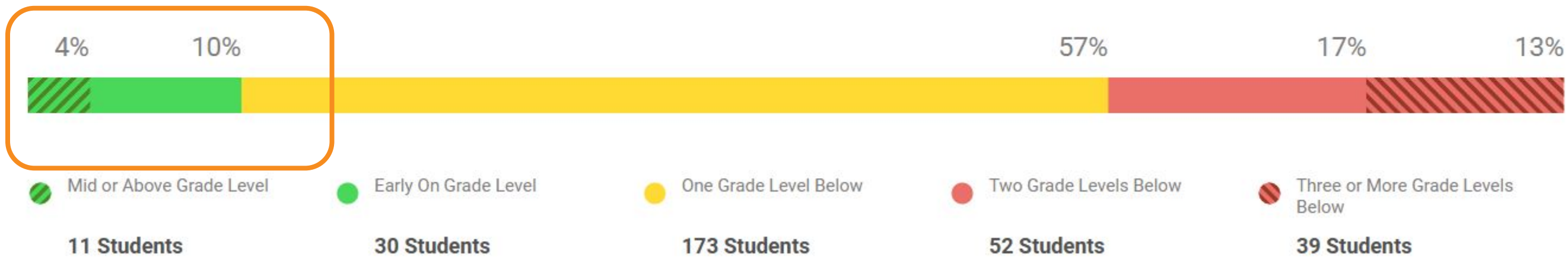
Overall Placement

Students Assessed/Total: 291/357



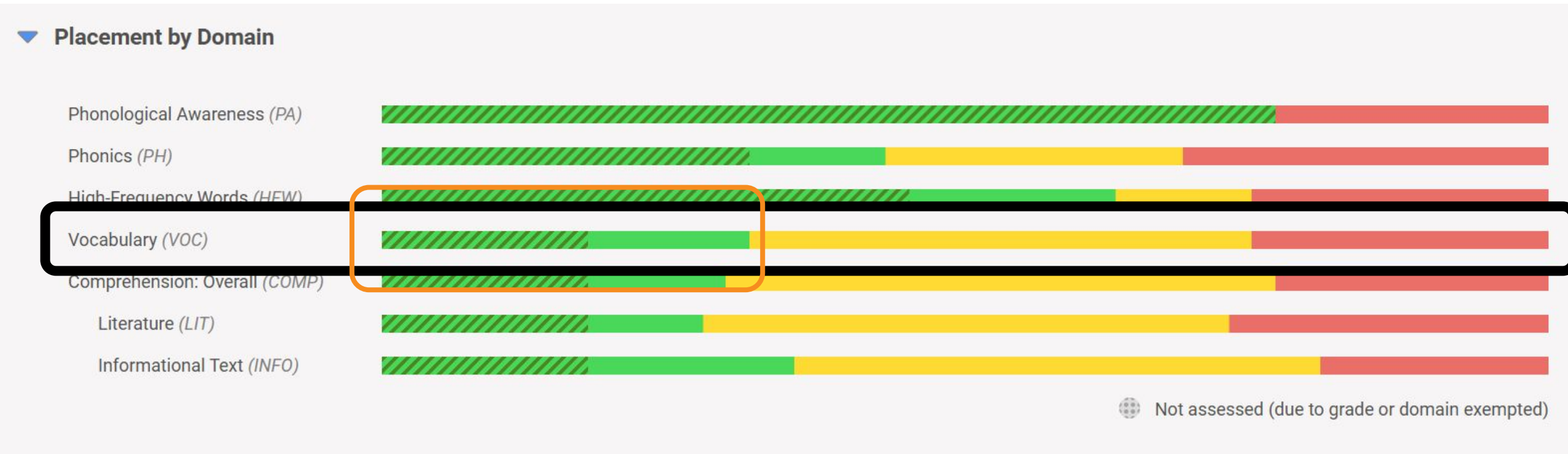
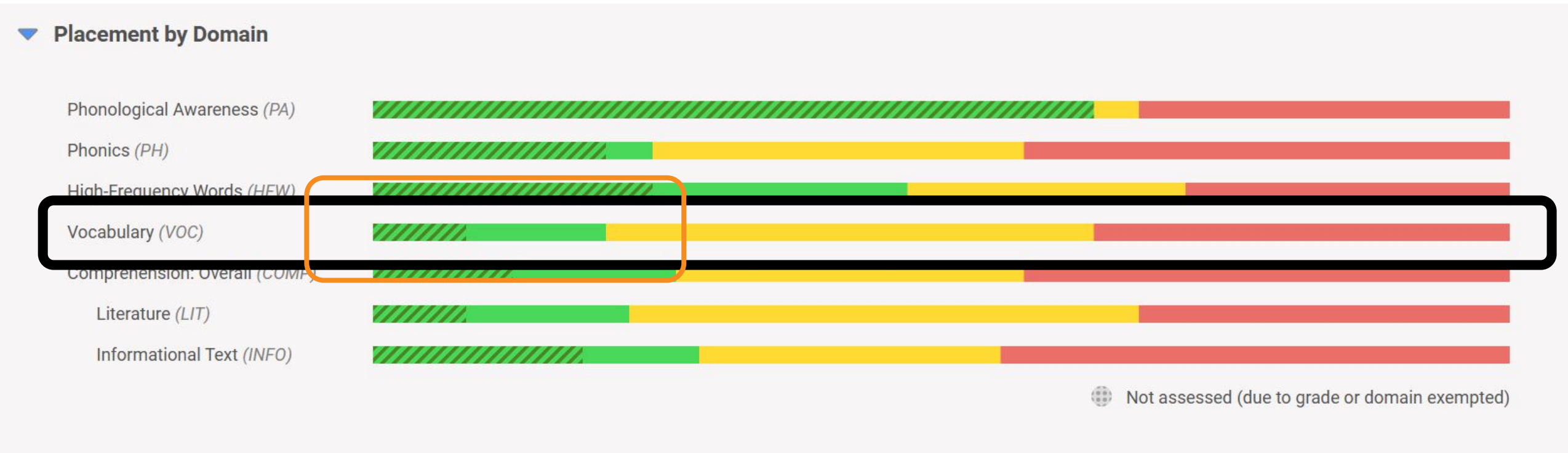
Overall Placement

Students Assessed/Total: 305/357



District Goal 01: Increase Academic Achievement

iReady Growth - Vocabulary Domain



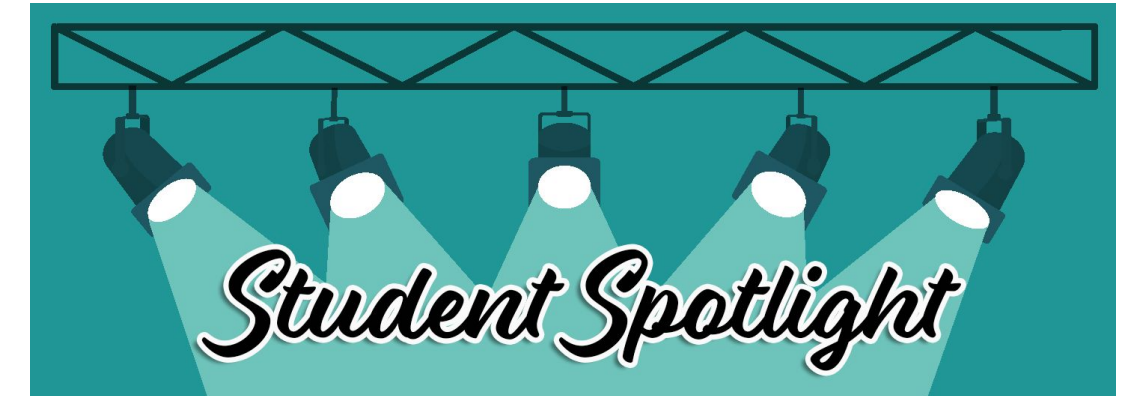
District Goal 01: Increase Academic Achievement

Data Driven

Small Group Instruction

Targeted Intervention

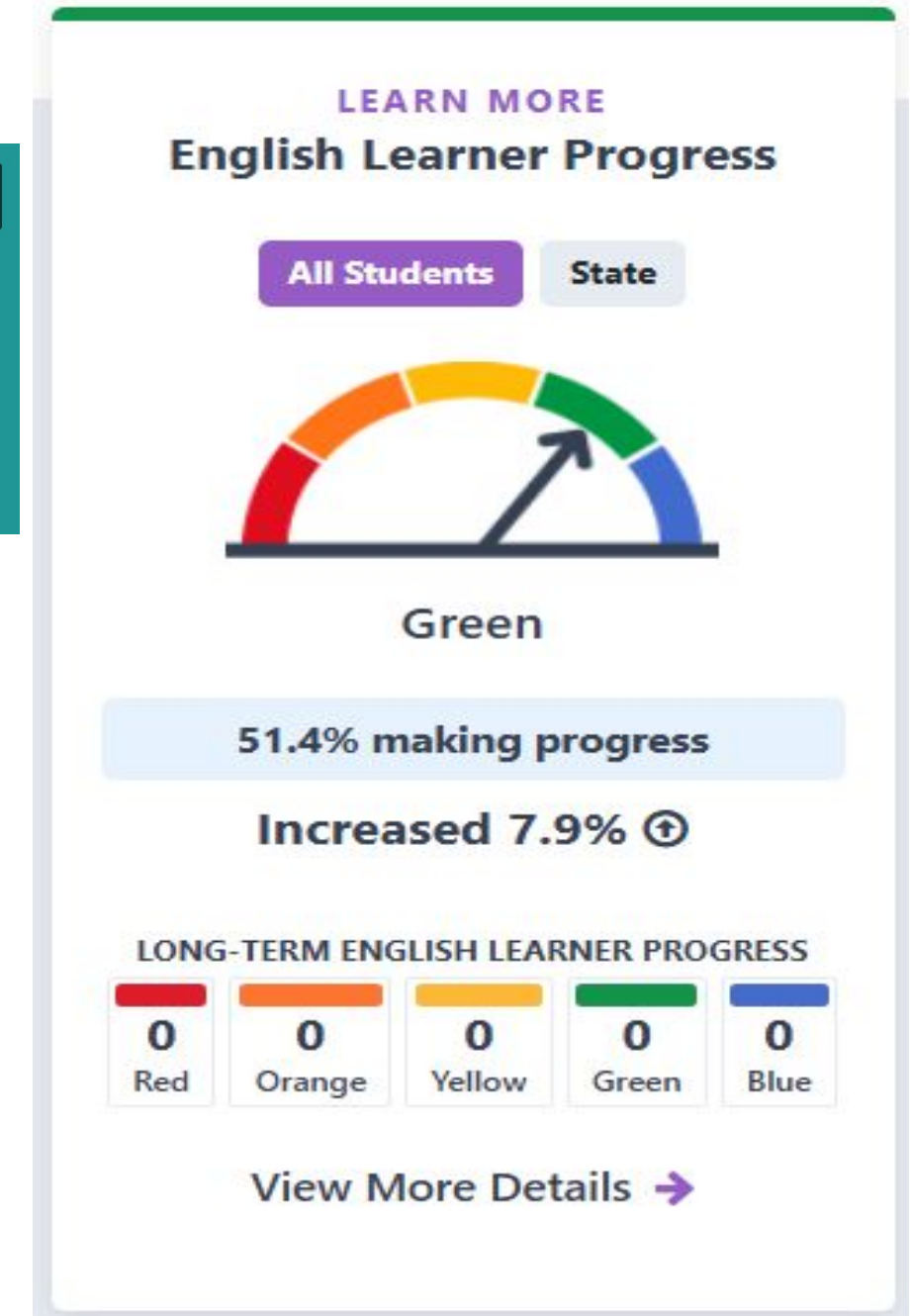
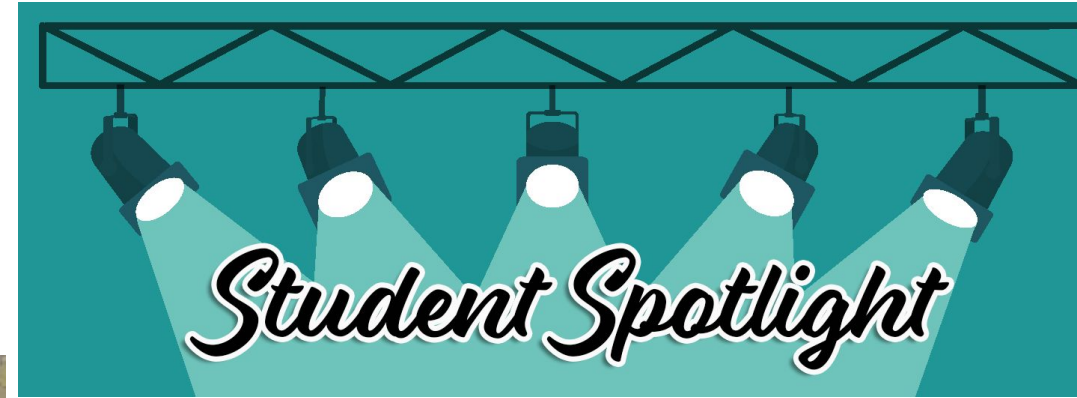
Student Enrichment



District Goal 02: Ensure Equity & Access

Program Highlights

ELPAC Club



District Goal 03: Improve Parent & Student Engagement Program Highlights

At FDR, we are
Tigers and we ROAR!!!



- Community Schools -
- Tiered Parent Workshops (PEP)
- Trajectory of Hope - Affinity Circles
- ROAR Team
- Roosevelt Community Conversations
- School Site Council & Community Schools
- Advisory Council
- Community of Multilingual Families
- ELAC



Jennifer Bagley, PTA
President

R-Responsible Learners, O-Own your Actions, A-Act with Kindness, R-Remember to be a Friend



ROAR Store





TREC Program Highlights

- MakerSpace



3rd Grade

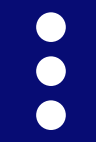


5th Grade



Kinder



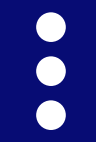


School Highlights: Student Engagement

ESMoA (Experimentally Structured Museum of Art)

Board of Trustees Meeting



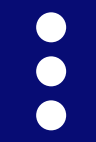


School Highlights: Student & Family



Loved Ones
Lunch 





School Highlights: Student & Family

Engagement Events:

FIND OUT ABOUT
PTA ELECTIONS!

COFFEE
WITH PTA AND THE PRINCIPAL

FEBRUARY 23 @ 8:00 - 8:30
ROOM 5
COFFEE AND A LIGHT BREAKFAST WILL BE SERVED!

IN PARTNERSHIP
WITH **RAP**

ROOSEVELT'S
Got Talent

CELEBRATING BLACK EXCELLENCE
IN ARTS & ENTERTAINMENT

FRIDAY | FEB. 27TH | 5:30 PM



Focus of 2025-2026

- Professional Learning Communities (PLCs)
 - Increase academic achievement
 - Data-Driven Instruction to ensure student proficiency
 - Data Walls & Essential Standards Work
 - Student Support- Instruction, Interventions, Enrichment
- MTSS - Tiered Systems of Supports
- Equity Work - Genius Initiative
- 21st Century Learning Community Grant
- Literacy - Reading Garden





Thank You

Any questions?

fdr.lawndalesd.net

