

Identified routes for Carson Elementary School are bidirectional and shown with a solid purple line symbol (see legend). Children living on residential streets that are connected to the walk routes can walk along their streets to the main routes. Small children should be accompanied by an adult.

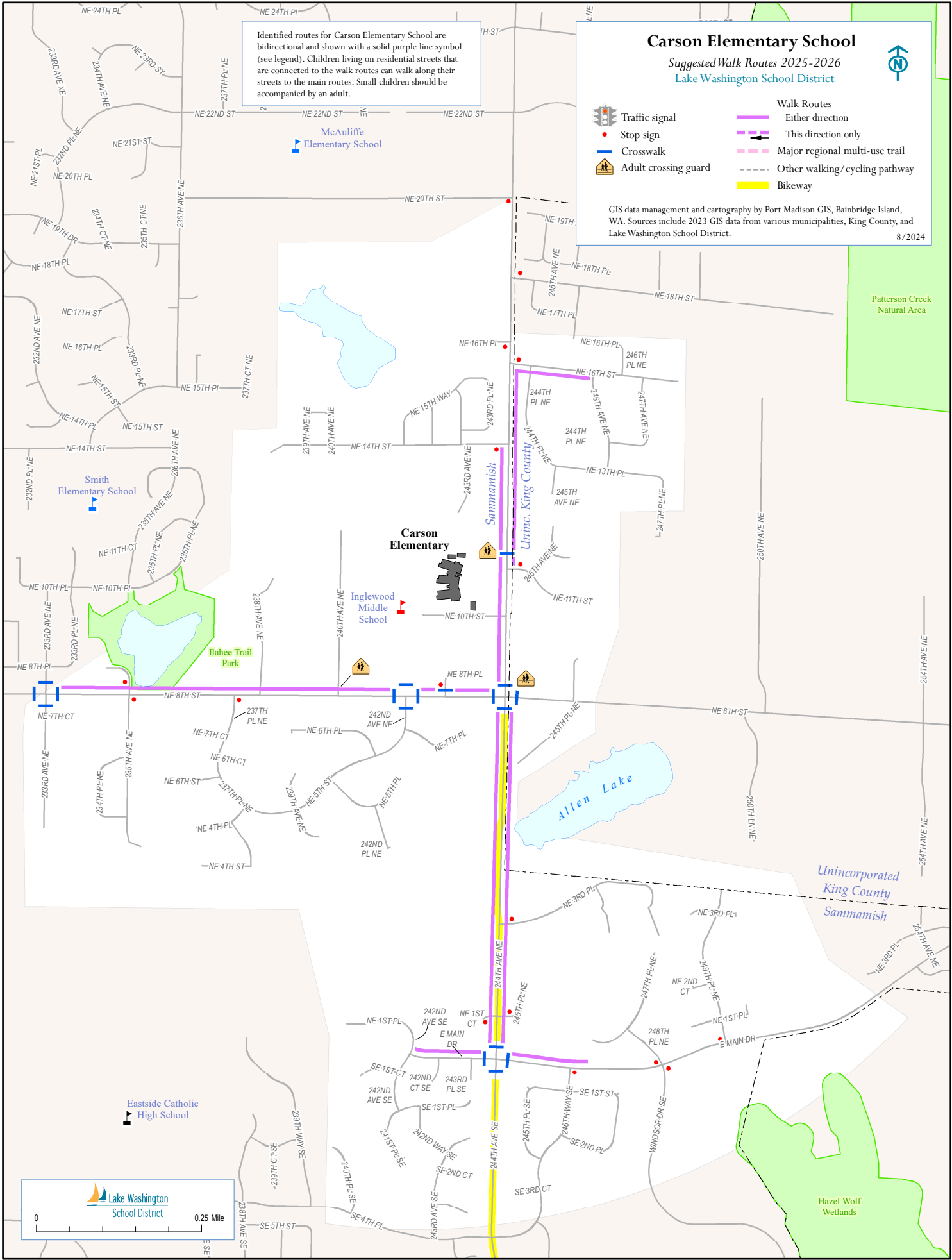
Carson Elementary School

Suggested Walk Routes 2025-2026
Lake Washington School District



- | | |
|----------------------|--------------------------------|
| Traffic signal | Walk Routes |
| Stop sign | Either direction |
| Crosswalk | This direction only |
| Adult crossing guard | Major regional multi-use trail |
| | Other walking/cycling pathway |
| | Bikeway |

GIS data management and cartography by Port Madison GIS, Bainbridge Island, WA. Sources include 2023 GIS data from various municipalities, King County, and Lake Washington School District. 8/2024



Patterson Creek Natural Area

Unincorporated King County Sammamish

Hazel Wolf Wetlands

