

# Unami Parent Council Meeting

Thursday, February 19<sup>th</sup>, 2026

59

## Overview – 6<sup>th</sup> Grade

6 <sup>th</sup> Grade						
Period	Time	MP 1	MP 2	MP 3	MP 4	Length
Period 1	7:30 - 8:17am	Core				47 min
Period 2	8:20 - 9:07am	Core				47 min
I/E	9:10 - 9:50am	I/E				40 min
Period 3	9:53 - 10:40am	Core				47 min
Period 4	10:43 - 11:30am	Core				47 min
Period 5	11:33 - 12:20 pm	Special				47 min
Lunch	12:20 - 12:50	Lunch				30 min
Period 6	12:53 - 1:40pm	Core				47 min
Period 7	1:43 - 2:30pm	Core				47 min

**Highlights**

- **7 period day + an I/E period** (status quo)
- **6 core periods and 1 period of special** (This is the same as current 6<sup>th</sup> grade instructional day)
- **Core Classes:** 1 period Social Studies, 1 period Science, 2 periods ELA, 2 periods Math - This more than doubles the amount of Social Studies and Science instructional minutes over the course of the year and keeps the amount of ELA and Mathematics instructional minutes close to the same over the course of the school year.)
- **Specials Classes:** Art, FCS, STEAM 1(Tech Ed Department Wants to Rename classes to STEAM), Physical Education, Health 1, Integrated Tech 1, General Music or Ensemble Music (Band, Choir, Orchestra), and a new special called 6<sup>th</sup> Grade Seminar (Study Skills, Executive Functioning Skills, Support Transitioning Between Grades, Career Readiness Benchmark Work) – Students receive all specials an equal amount of time. (No resource during specials)

60

## Overview – 7<sup>th</sup> Grade

7 <sup>th</sup> Grade						
Period	Time	MP 1	MP 2	MP 3	MP 4	Length
Period 1	7:30 - 8:17am	Special				47 min
Period 2	8:20 - 9:07am	Special				47 min
I/E	9:10 - 9:50am	I/E				40 min
Period 3	10:00 - 10:40am	Core				47 min
Lunch	10:40am - 11: 10am	Lunch				30 min
Period 4	11:13 - 12:00pm	Core				47 min
Period 5	12:03 - 12:50pm	Core				47 min
Period 6	12:53 - 1:40pm	Core				47 min
Period 7	1:43 - 2:30pm	Core				47 min

**Highlights**

- **7 period day + an I/E period** (status quo)
- **5 core periods and 2 period of specials**
- **Core Classes:** 1 period Social Studies, 1 period Science, 1 period ELA, 1 period Math, 1 period World Language or MTSS ELA or MTSS Math or MTSS ELA/Math (Students who require additional support in ELA or Math will receive a Tiered Intervention as their 5<sup>th</sup> Core course. Students in need of additional Intervention can receive additional doses of ELA/Math intervention during I/E period.)
- **Specials Classes:** Art, FCS, STEAM 2(Tech Ed), Physical Education, Health 2, Integrated Tech 2, General Music or Ensemble Music (Band, Choir, Orchestra), 7<sup>th</sup> Grade Seminar (Study Skills, Executive Functioning Skills, Support Transitioning Between Grades, Career Readiness Benchmark Work) – Students receive all specials an equal amount of time. (No resource during specials)

61

## Overview – 8<sup>th</sup> Grade

8 <sup>th</sup> Grade						
Period	Time	MP 1	MP 2	MP 3	MP 4	Length
Period 1	7:30 - 8:17am	Core				47 min
Period 2	8:20 - 9:07am	Core				47 min
Period 3	9:10 - 9:50am	I/E				40 min
I/E	10:00 - 10:40am	Core				47 min
Period 4	10:43 - 11:30am	Core				47 min
Lunch	11:30 - 12:00pm	Lunch				30 min
Period 5	12:03 - 12:50pm	Core				47 min
Period 6	12:53 - 1:40pm	Special				47 min
Period 7	1:43 - 2:30pm	Special				47 min

**Highlights**


- **7 period day + an I/E period** (status quo)
- **5 core periods and 2 periods of specials**
- **Core Classes:** 1 period Social Studies, 1 period Science, 1 period ELA, 1 period Math, 1 period World Language or MTSS ELA or MTSS Math or MTSS ELA/Math (Students who require additional support in ELA or Math will receive a Tiered Intervention as their 5<sup>th</sup> Core course. Students in need of additional Intervention can receive additional doses of ELA/Math intervention during I/E period.)
- **Specials Classes:** Art, FCS, STEAM 3(Tech Ed), Physical Education, Health 3, Integrated Tech 3, General Music or Ensemble Music (Band, Choir, Orchestra), 8<sup>th</sup> Grade Seminar (Study Skills, Executive Functioning Skills, Support Transitioning Between Grades, Career Readiness Benchmark Work) – Students receive all specials an equal amount of time. (No resource during specials)

62



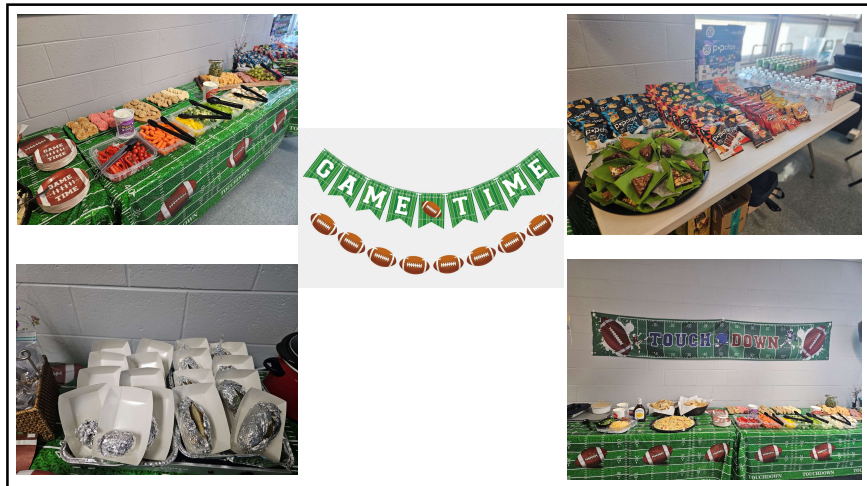
63

### Unami Parent Council Updates – February 2026



- Superintendent Search
  - Parent Reps from each building invited to share via Zoom meeting with BCIU staff facilitating search
  - Online survey – Approximately 800 responses
  - Town Hall meetings – only a few attended each of (3) sessions
- Vision 2030 – Comprehensive Planning Meeting January 2026
  - Priority Areas
    - Academic Excellence, Health and Wellness, Technology and Innovation, and Community Engagement
  - Highlights
    - Flexible graduation pathways, physical and mental wellness, community and alumni partnerships, technology (including AI), effective communication
- Staff Appreciation
  - **Tailgating Party** on February 4: We decorated the Faculty Room and offered a Superbowl Spud Bar with many toppings, lots of appetizers and desserts and lawn games
  - Thank you to Alison Ficociello for taking the lead!
  - March Event: **Make Your Own Trail Mix** – look for a SignUpGenius to donate

64



65



66

# MP2 - Great work in the classroom!

- 133 students Distinguished Honors (4.0 or above)
- 290 students High Honors (3.6-3.99)
- 233 students Honors (3.0-3.59)
- 656 students made Honor Roll in Marking Period 2 (80% of the students at Unami)

67

## Townhall Meetings – Week of 2/9

- Celebrate MP1 & MP2 Success**
  - Academic, Extracurricular, Arts, etc.
- Review Behavior Expectations**
  - Hallways, Technology, Cafeteria, Academic Dishonesty, Preparedness
- Things to look forward to**
  - Field Trips, Field Day, 8<sup>th</sup> & 9<sup>th</sup> grade EOY Activities, Spring Music Performances & Musical

68

### CB TESTING DATES:

<b>ELA</b>	April 21-23
<b>Math</b>	April 28-29
<b>Science (8<sup>th</sup> only)</b>	April 30

- 3 days of ELA (Online)
- 2 days of Math (Online)
- 1 day of Science (Online)

69

## UNAMI ENCORES PRESENT


### High School Musical, Jr.

MARCH 13, 2026 @ 7PM  
 MARCH 14, 2026 @ 1 PM AND 7 PM  
 MARCH 15, 2026 @ 1 PM

TICKETS= \$12

SCAN ME

70



**Spirit-ware Sale!**

The **Online School Store** opens on Monday, February 23rd for our Unami Spirit Wear sale! 🇺🇸

Purchase Unami shirts, hats, hoodies, blankets, bags and more!

The spring purchase window will be open from February 23rd to March 8th.

Use this link to access our virtual store and place your orders!  
<https://kampusklothes.chipply.com/unami26>

Support your school and show your spirit!



71

**RESERVE YOUR YEARBOOK!**

2025-2026 Unami Middle School Yearbooks are on sale for \$45.00 until 5/25!




After that, we **can not** guarantee your student a yearbook.

[jostens.com/ybkad](https://jostens.com/ybkad)

72

## Looking Ahead

 <p><b>February</b></p> <p><b>23rd</b></p> <ul style="list-style-type: none"> <li>• 5<sup>th</sup> &amp; 6<sup>th</sup> Grade Parent Orientation</li> </ul>	 <p><b>March</b></p> <p><b>13<sup>th</sup> – 15<sup>th</sup></b></p> <ul style="list-style-type: none"> <li>• Unami Spring Musical – High School Musical</li> </ul> <p><b>20<sup>th</sup></b></p> <ul style="list-style-type: none"> <li>• No School - Eid</li> </ul> <p><b>25<sup>th</sup></b></p> <ul style="list-style-type: none"> <li>• Freshman Field Trip to Broadway</li> </ul>	 <p><b>May</b></p> <p>Teacher Appreciation Week Planning</p>
--	--	---

73