



WELCOME TO PRE-K

Early Learning Center, La Plata

Meet the ELC Instructional Staff

- Lion Cubs: Ms. DiPietro, Ms. Imes, Ms. Willis, & Ms. Boling
- Wolf Cubs: Ms. Oliver, Ms. Payton, Ms. Burroughs & Ms. Downtin
- Tiger Cubs: Ms. Rybarczyk, Ms. Chang, Ms. Fowler, & Ms. Dozier
- Bear Cubs: Ms. Garner & Ms. McGuire
- Panda Cubs: Ms. Wedding & Ms. Cooper
- Special Areas: Ms. Biehl

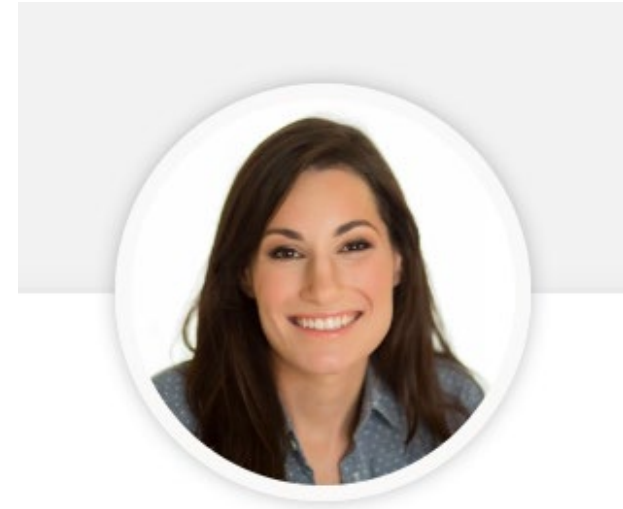
Meet the ELC Support Staff

- Secretary: Mrs. Brindle
- Food Service: Ms. Rose & Ms. Poblano
- Building Service: Mr. Dorsey, Mr. Dre
- Nurse: Ms. Joy
- Instructional Specialist: Ms. Krupa
- Computer Analyst: Mr. Ford
- Coordinator: Ms. Adam
- Counselor: Ms. Moore
- CSM Work Studies: Ms. Kahla & Ms. Morales

SPECIAL AREAS

WITH

MRS. BIEHL





WEEKLY ROTATION

MONDAY – P.E. - PLEASE WEAR TENNIS SHOES

TUESDAY – MUSIC

WEDNESDAY & THURSDAY – ART

FRIDAY – LIBRARY/TECHNOLOGY - CHECK OUT STARTS IN
OCTOBER

School hours

- Regular School day 9:30am – 4:00pm
(Doors open @ 9:30)
 - Students are considered tardy and must be signed in at the front office starting at 9:45am
- Two-Hour Early Dismissal 9:30am – 2:00pm
- Two-Hour Delay 11:30am – 4:00pm

Instagram & Pictures

- Please follow us!!!
elc_laplata1
- If you do not want your child to have pictures taken and used on Instagram
 - email Ms. Biehl & Ms. Adam (jbiehl@gmail.com & cvallandingham-adam@ccboe.com)

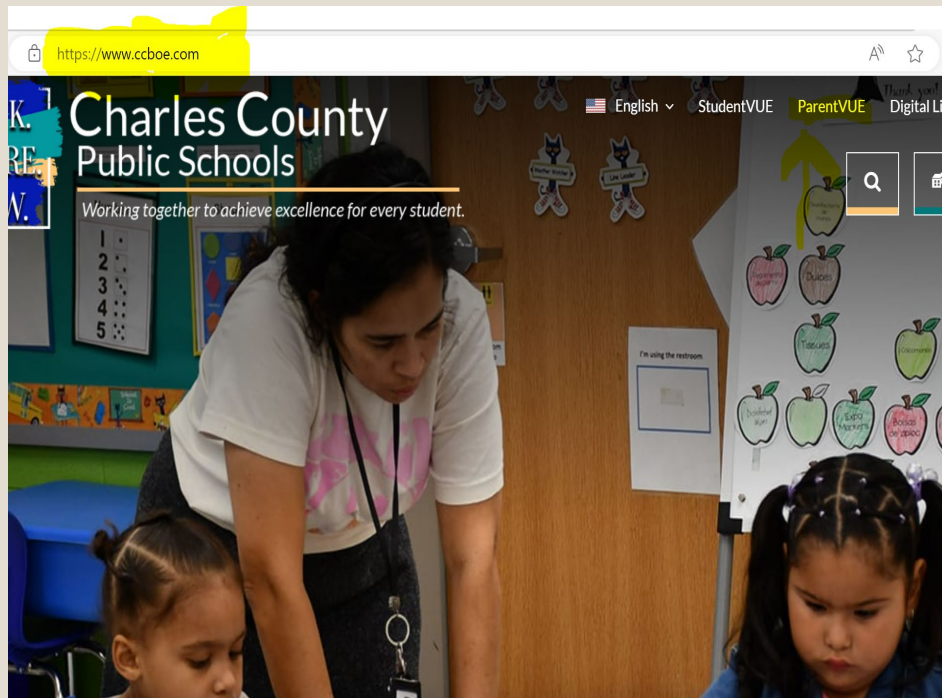
Attendance MATTERS!

- It is so important for students to be PRESENT!
- If they are absent, they are missing something!
- Help us to get them as far as we can for Kindergarten by making sure they are in school!
- Letters are automatically generated for absences in increments of 5.

ParentVue & MySchoolBucks

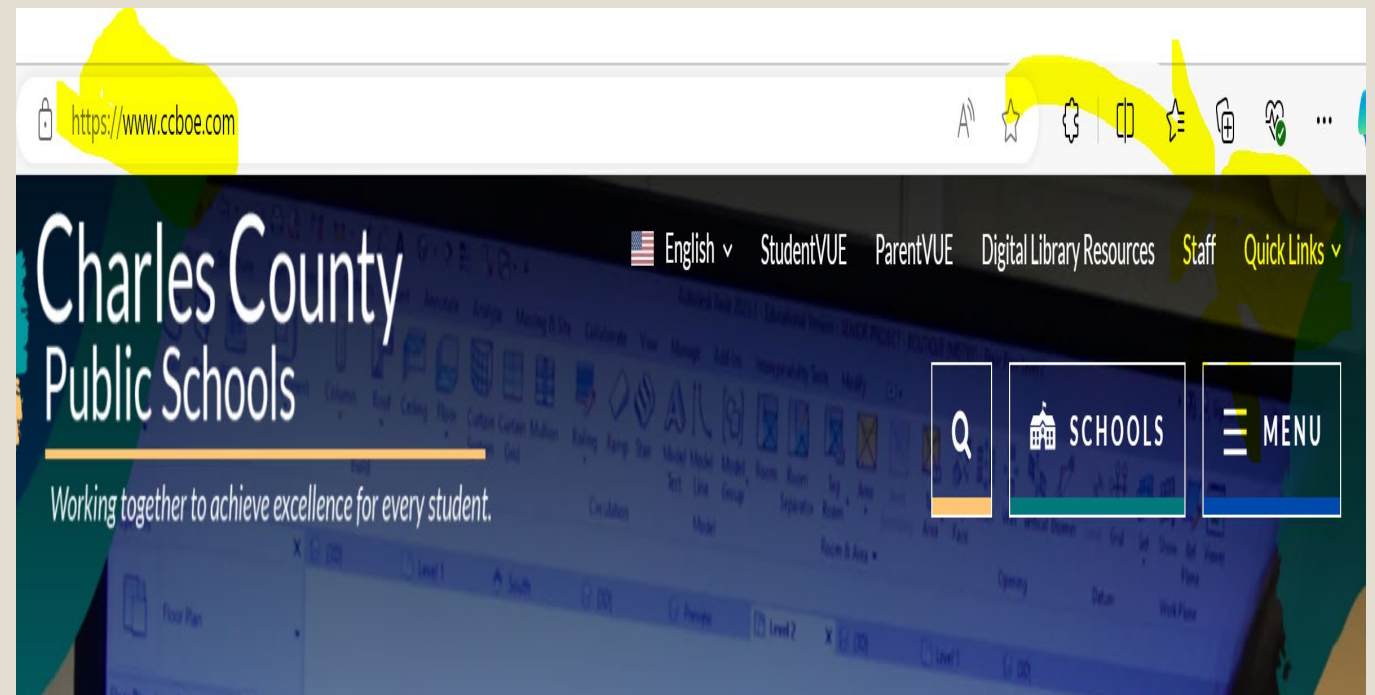
ParentVUE

- ~ go to www.ccboe.com
- ~ click on ParentVUE in top right corner



MySchoolBucks – For Lunch!

- ~ go to www.ccboe.com
- ~ click on Quick Links
- ~ choose MySchoolBucks



Arrival

- Doors open at 9:30
- All students enter through the front doors
- Car Riders should approach the building by driving up the back of the parking lot; staff may signal for cars to wait for buses arriving
- Doors close at 9:45, students are considered tardy and must be signed in
- Staff will be available to escort your child to class



Backpack Tag Color Key



Car Riders



Bus Riders



AlphaBest

Dismissal

- Dismissal begins at 4:00
- All students have a backpack tag for dismissal
- Students are escorted to their dismissal location by staff
- All students dismiss from the front doors
- AlphaBest students will be escorted to the special areas classroom

Dismissal (continued...)

- Any changes in dismissal must be received in writing by the front office by 3:45pm (or 1:45 on an early dismissal day)
 - Natalie Brindle - nbrindle@ccboe.com
 - Your child's classroom teacher
- Early dismissal must occur no later than 3:45 (or 1:45 on an early dismissal day)

AlphaBest

- Daycare Service located at the ELC
- Utilizes our space, but the staff are monitored by AlphaBest
 - Have their own curriculum & guidelines/procedures
- For questions or to sign up, visit www.alphabest.org

Car Riders

- Staff checks out the car tags and radios for staff to bring out student with same number on backpack tag
- Staff will bring your child to the car, but you must buckle them in
- If someone picks up and does not have the tag – they will be asked for an ID
 - If it is someone other than the parent, office must have received permission to release in writing
- Students will not be released to any person that has not be confirmed through the front office

Bus Riders

- Students have a tag on their backpack with their bus number
- The bus driver will not allow them off the bus if there is not someone to get them off the bus
- If there is not someone to receive a student at the bus stop, the student will be brought back to school to be picked up by a parent

Birthday Celebrations

- Send goodie bags w/ non-food items
- Send individually wrapped snack items (pretzels, chips, juice, Little Debbie)
- Donate a book to the school library
 - We will mark with your child's name & Birthdate
 - Can be read to class to celebrate birthday & your child can add it to the library
- Decorate a Door - \$5/day or \$20 for the week
 - We have two doors in the foyer to use
 - Email Ms. Adam to schedule

We want your child here!

- And we want you here...
- Want to pop-in? Give us a call!
- Want to volunteer? Let's Talk!
 - In classroom & out of classroom opportunities

Fundraisers

- Oh....the disdain.....
- Decorate a Door - \$5/day or \$20/week
- LifeTouch
- ELC Swag - October
- Double Good Popcorn - March

Let's Talk Behavior

- What happens when your child gets frustrated?
- Pre-K is heavily designed to help students with learning to problem-solve, self-regulate, and socialize appropriately. This is a process!
- Sometimes this process can be difficult – but we help students to work through it!
- Please help us to help your child:
 - Did you talk to the teacher? What did the teacher say?
 - Did the teacher make sure you were okay?
 - Did the teacher talk to the other student?