

Good morning Parents
Today is Wednesday, February 11th



Welcome Parents!



FOLLOW ME !!



To get the principal's Point of view follow:

@PRINCIPAL_SILVESTRE

 Instagram

MPTCS.Org

STEAM Academy Vice Principals



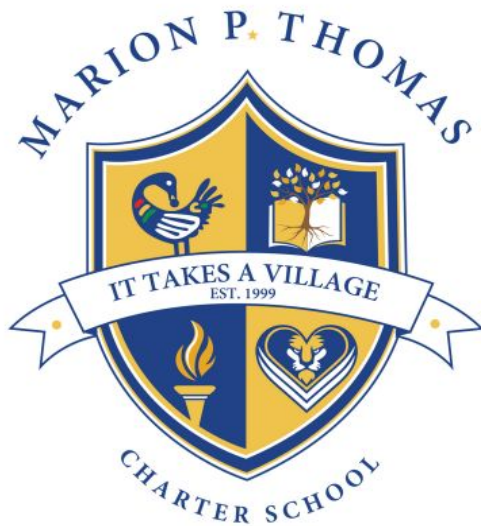
Chit-Chat Schedule & Time

Second Wednesday of Every Month

9:15 to 10:00 am

Next Meeting will be on

March 11th



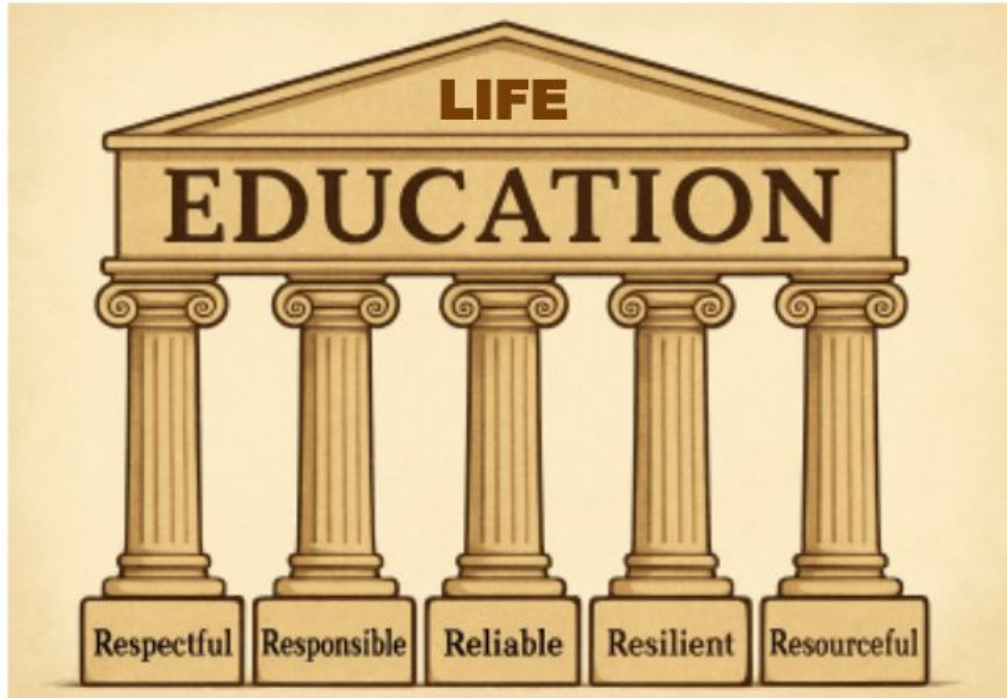
Our Mission: *The Mission of Marion P. Thomas Charter School is to build culturally rich, transformative educational spaces that cultivate successful, lifelong innovators who use their passions, character, and intellect to better themselves, the greater Newark community, and the world beyond.*

The MPTCS Crest speaks to four core values that are designed to guide our young people and govern our work.



- ***The Sankofa Bird*** is a West African adinkra symbol which means to “go back and get it.” We want our scholars to use knowledge from the past to inform, inspire, build a successful future, and give back to the community.
- ***The Tree of Knowledge*** symbolizes lifelong learning that is rooted in rich culture and well-rounded experiences.
- ***The Torch*** represents the igniting of fire, passion, and leadership in our scholars. We want them to be trailblazers and light their own paths.
- ***The Tiger*** encased in the heart signifies the balancing of strength, boldness, resilience, and prowess with compassion and strong character. We want our scholars to be good people who are courageous and self-aware.

Pillars for Success



I am:
Respectful
Responsible
Reliable
Resilient
Resourceful

An illustration showing a variety of hands of different skin tones (white, light brown, dark brown, black, orange, blue, green) stacked on top of each other in a circular arrangement, symbolizing unity and teamwork.

School Mantra

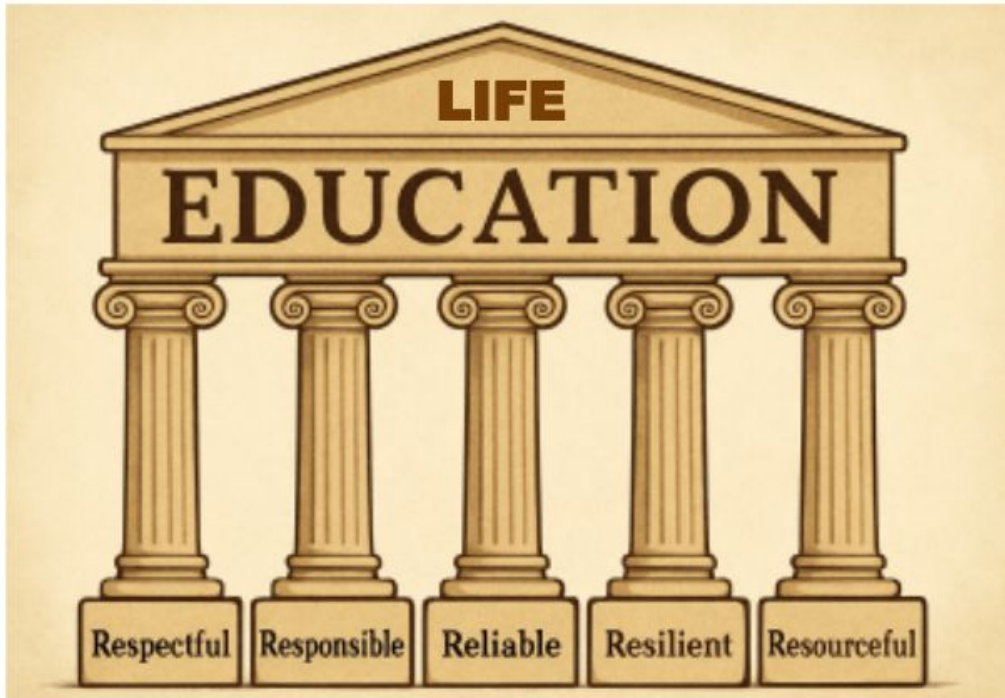
“All of us are better than any one of us, as long as each of us, gives the best in us”

Scholar Pledge

I Pledge:

1. To be present, both physically and mentally, to absorb and internalize the information given.
2. To try my best in all that I do. Making mature and wise decisions, and holding myself accountable for my actions.
3. To do my very best to show respect, get along with my fellow scholars and staff members, and help make our STEAM Academy a peaceful and productive place for everyone.
4. To recognize Everyone is important and has their own special way of seeing and doing things. When we share our ideas, we help each other learn and grow.
5. Not to fear mistakes, but reflect, learn from them, and continue to push forward.
6. To always represent myself, the school, my family and the community by being a respectful ambassador for the city of Newark.

Pillars for Success



I am:
Respectful
Responsible
Reliable
Resilient
Resourceful



School Mantra

“All of us are better than any one of us, as long as each of us, gives the best in us”

STEAM Education



STEAM Education

S - Science
T - Technology
E - Engineering
A - Arts
M - Mathematics

STEAM Approach

- Observation
- Creativity
- Innovation
- Planning
- Revision
- Collaboration
- Presentation

What Should Our STEAM Academy Scholars Look Like?



marion p thomas
CHARTER SCHOOL



Grades

Navy blue polo with MPTCS logo
Navy blue pants, skorts, or shorts
Navy blue cardigan with MPTCS logo

Grades 6-8

Light blue oxford shirt with MPTCS logo
Navy Blue uniform pants, skorts, or shorts
Navy blue ascot or tie

ALL STUDENTS MUST WEAR BLACK SHOES OR SNEAKERS.

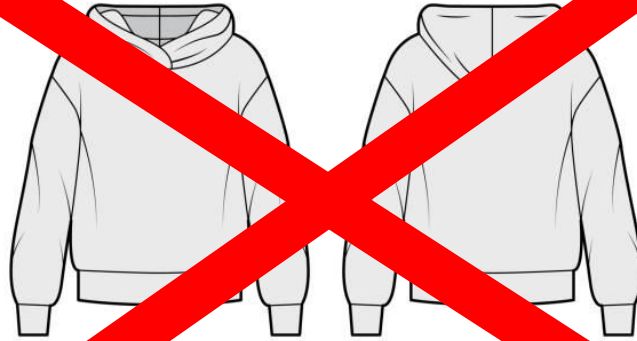
Kids Paradise
1016 Springfield Ave
Irvington NJ 07111
973-374-4700

Today Kids
1049 Springfield Ave
Irvington NJ 07111
973-374-3070

Flynn O'Hara
196-198 Ferry Street
Newark, NJ 07105
862-231-2149



NO



HOODIES

STEAM Support TEAM!



E. Silvestre - Principal
A. Richardson - VP
E. Pride - VP
D. Purnell - Operations
A. Munoz - FACE
K. KJ - Culture & Climate
N. Burgwyn - O. Manager
B. Lucas - Att. Counselor
L. Valdez - Social Worker
T. Kelly - Child Study
Team
N. Ndichie - Nurse



School President - Morgan D.
School Vice President - Jihad H.
School Secretary - Mia P.S.
School Treasurer - Kevin N.



- 8th Grade:
 - Kaylee M.
 - Eugenia K.

- 7th Grade:
 - Karissa H.
 - Caleb V.

- 6th Grade:
 - Oluwasikemi O.
 - Aanuoluwapo D.

- 5th Grade:
 - Avalyn A.
 - Carla R.

- 4th Grade:
 - William B.
 - Ava E.

- 3rd Grade:
 - Janice I.
 - Nathaniel M.

Staff & Student Safety

Staff and Student safety is our top priority. Whenever we have a safety concern, our expectation is for everyone to comply.

If you see something, say something.

February - Key Information

***2/09: Attendance Backpack Letters - 100th day of school**

2/11: Parent Workshop with Effective School Solutions, starting at 5:30 pm

2/12: Parent/Scholar Dance, 5:00 - 7:00 pm (Free)

2/13: December Perfect Attendance Dress-Up day

2/13: Valentine's Day Candy Gram Distribution (candy & a message delivered to scholars from special someone)

2/16: School Closed - Presidents Day

2/18: Tiger for a Day - High School Trip for 7th and 8th graders

2/19: Black History Month Celebration Show (PK to 2nd) - 1:00 - 3:00 pm

2/21: All Schools Fair - Open House Recruitment for 2026-27

***2/23: LinkIt Form B Starts (Science, ELA, Math)**

2/26: BHM Village Celebration (3rd to 12th grade) - MPTCS High School 5:00 - 7:00 pm



PLEASE JOIN US FOR A

VALENTINE'S DAY PARENT & CHILD DANCE



RSVP BY
FEBRUARY 10TH

SCAN ME!



12 | FEBRUARY | 5 PM

370 SOUTH 7TH ST
NEWARK, NJ 07103
STEAM GYMNASIUM

MUSIC, FOOD, PRIZES AND
LOTS OF FUN
FREE TICKETS ARE
AVAILABLE IN MRS.
MUNOZ OFFICE

FAMILIES PLEASE JOIN US
FOR A



Valentine Candy Grams



February 4th-12th

All candy Grams will be
delivered on February 13th

The Student Council is
proud to spread kindness
and show we care with our
annual candy gram
fundraiser!

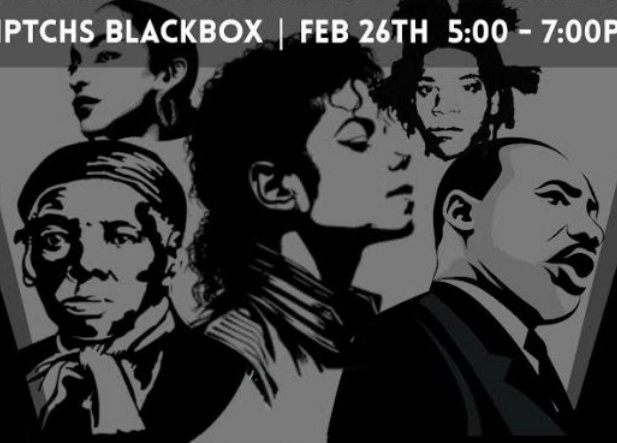
Support our "BE KIND" movement!

Send as many as you like! Return \$2
per candy Gram you wish to send in
an envelope with your name & class
in it no later than February 13th
IN PERSON SALES AT LUNCH!

For more information contact
Ms. Munoz
862-754-2014 or email
amunoz@mptcs.org

JOIN THE VILLAGE OF MARION P. THOMAS CHARTER SCHOOL

MPTCHS BLACKBOX | FEB 26TH 5:00 - 7:00PM



DANCE ★ MUSIC ★ ART ★ FOOD



**A CENTURY OF BLACK HISTORY
COMMEMORATIONS**

125 Sussex Ave, Newark, NJ 07103



From February 23rd - February 27th

- Monday - Science
- Tuesday - ELA
- Wednesday - Math Day 1
- Thursday - Math Day 2
- Friday - Make-Ups

- ★ LinkIt is part of the 2nd Trimester grades.
- ★ This will help us identify student growth and areas of improvement.
- ★ This will help with preparation for the NJSLA

NJSLA - Adaptive

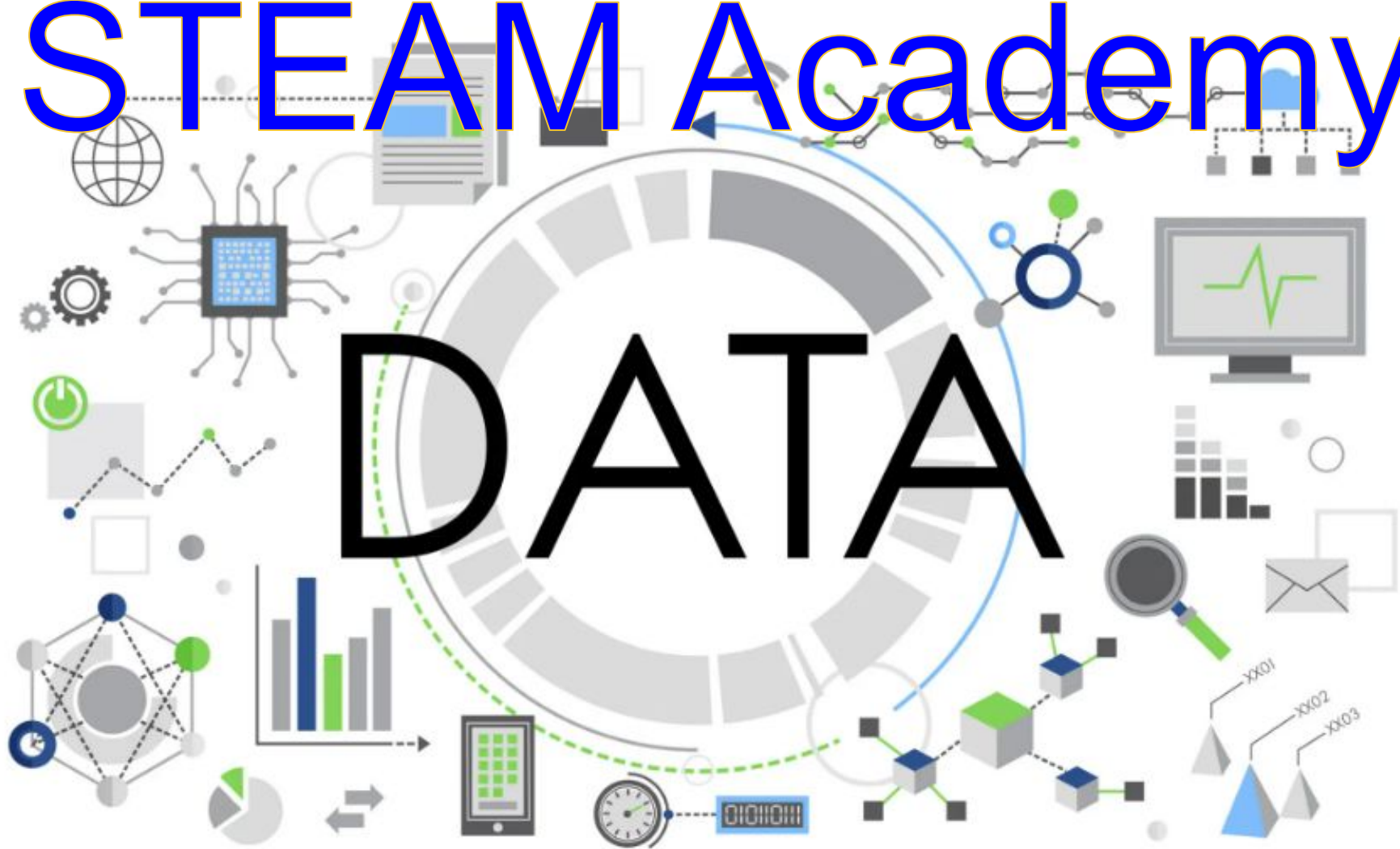
11 Weeks Left

The NJSLA–Adaptive is a new, computer-based, personalized assessment administered to all students in grades 3–8. This assessment dynamically adjusts the difficulty of questions in real time based on each student’s responses, allowing for a more accurate measure of their academic skills and growth.

Please be aware that NJSLA–Adaptive results become part of a student’s academic profile. These records may be reviewed by secondary schools and, in later years, institutions of higher education. As a result, it is essential that scholars approach this assessment with focus, effort, and a strong sense of responsibility.

STEAM Academy

DATA



Attendance Data as of February 10, 2026

School Goals:

- **97% Average Daily Attendance**
- **≤10% Chronic Absenteeism Rate**

Attendance (104 days)		
	Students	Percentage
Perfect	56	14.2%
Good (≤ 4%)	165	41.9%
Frequent (4% - 9%)	126	32.0%
Chronic (≥ 10%)	47	11.9%

Chronic Absenteeism

Chronic absenteeism is when a student misses **10% or more** of the school year. As of 2/10, we have accumulated a total of **104 days of school**, chronic absenteeism applies to students who have missed **10 or more days**. For the entire school year, chronic absenteeism applies to students that miss **18 or more** days of school.

Here's how chronic absenteeism affects promotion:

- **18–20 Unexcused Absences:** Summer school will be required to make up missed seat time and be eligible for promotion
- **21+ Unexcused Absences:** The student will be required to repeat the grade due to insufficient seat time

# of students currently chronic	10-14 Absences	15-17 Absences	≥18 Absences
68 Students	27 Students	6 Students	14 Students

Our goal for the year is **≤ 10%**, which equal to **≤ 39** students.

Attendance Data

School Goal

97% Average Daily Attendance

February avg
94.52%
M
93.78%
T
96.06%
W
95.93%
Th
96.95%
F
89.06%

January avg	December avg	November avg	October avg	September avg
92.57%	91.56%	93.01%	94.49%	95.95%
M	M	M	M	M
93.94%	92.12%	93.65%	94.71%	95.61%
T	T	T	T	T
88.30%	94.38%	95.43%	96.77%	96.45%
W	W	W	W	W
95.57%	93.37%	90.25%	95.47%	96.73%
Th	Th	Th	Th	Th
96.07%	93.71%	93.69%	94.48%	97.36%
F	F	F	F	F
89.66%	84.23%	91.71%	91.09%	93.50%

Stay in the know!



PARENT PORTAL

Parent Access is currently at 55%



QUESTIONS?

COMMENTS?

CONCERNS?