



# ROSE TREE MEDIA SCHOOL DISTRICT



## K-1 EARLY LEARNING CENTER Board Update



12 February 2026

# Agenda

- 01 Prior Discussions/Review
- 02 Project Updates
- 03 Discussion

Dismal Run

PDS

# 01 PRIOR DISCUSSIONS

Design Update  
Land Development Update  
Budget Update  
Timeline Update

Dismal Run

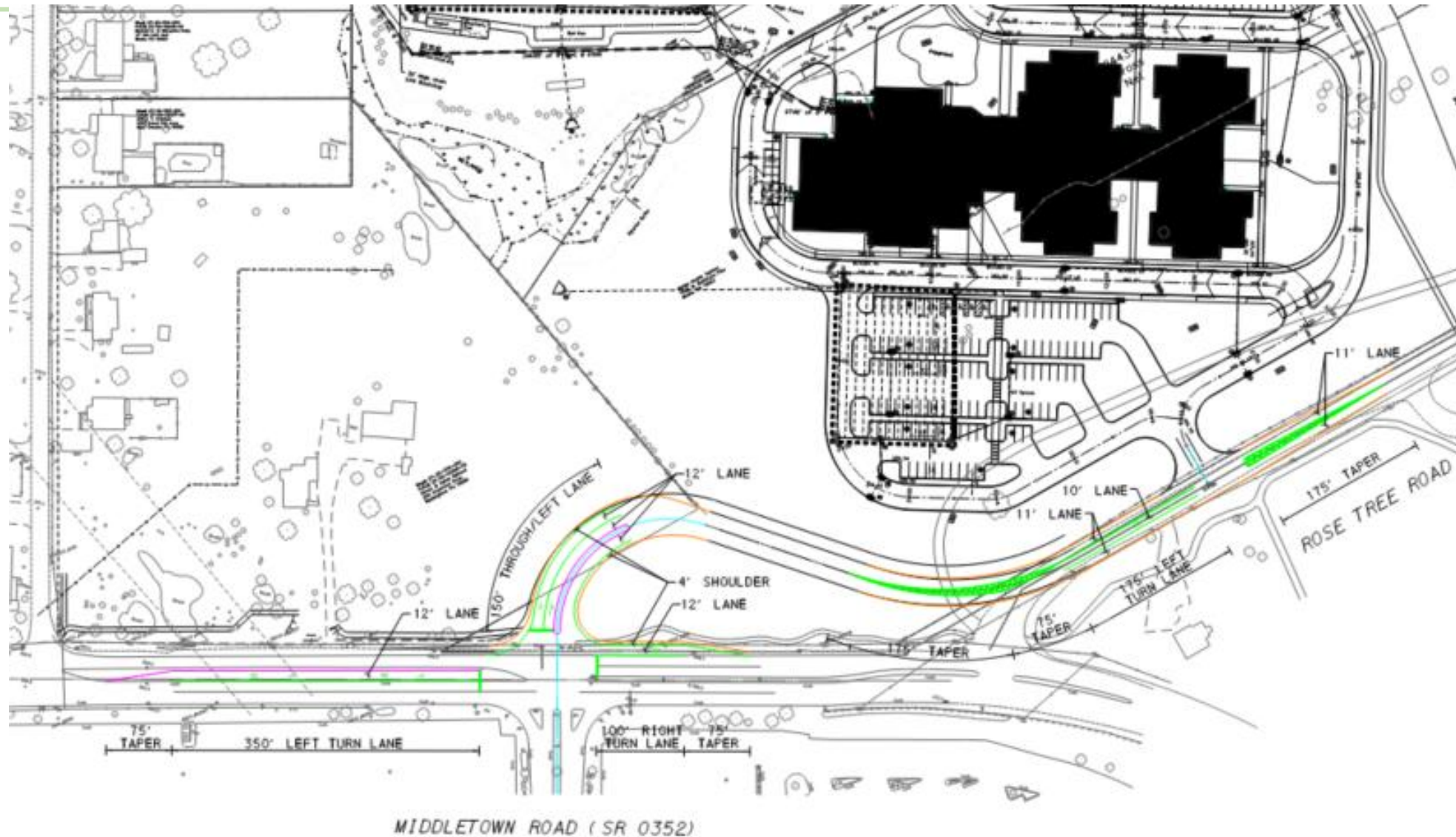
PDS

# BUDGET UPDATE

---

- At the Design Development phase, the project remains on budget.
- The team is also developing additive and alternate options to provide flexibility in selecting preferred—but non-essential—items.
  - Example: Materials or systems that may have higher initial costs but may offer long-term benefits through reduced maintenance, improved energy efficiency, and extended replacement cycles
  - Team will provide lifecycle analysis for major systems considered
- The project team is actively pursuing grant opportunities to offset costs associated with the PennDOT connection road.

# Rose Tree Rd Realignment Sketch



# KEY STEPS

---

- Key Steps in Land Development Process
  - Complete Expanded Traffic Study
  - Agreement from Church to allow the use of their land
  - Traffic Study Submission to PennDOT & Township
  - Preliminary Land Development Drawing Submission to Township
- Design Development (DD) Drawing advancement
  - Advance the Rose Tree Rd Re-alignment drawings to be included with DD set
  - Estimates for Rose Tree Rd Re-alignment to include with ACT 34 Documents
  - Move into Construction Drawings once Rose Tree Rd Re-alignment drawings are completed
- ACT 34 HEARING – TBD following land development key milestones

An aerial photograph of a campus, likely a university or college, showing various buildings, courtyards, and green spaces. The image is in grayscale and has a semi-transparent dark overlay. The text '02 Project Updates' is prominently displayed in the upper left quadrant in a light green color. The text 'Dismal Run' is visible vertically on the left side of the image. The text 'PDS' is located in the bottom right corner. The logo 'ICS with SCHRADERGROUP' is at the bottom left.

# 02 Project Updates

Dismal Run

PDS

# BUDGET UPDATE

---

- Multimodal Transportation Fund (MTF Program) Grant Application
  - Grant submission on 2/13 for funding for the “PennDOT Realignment” (Rose Tree Rd. & Middletown Rd.)
  - Grant application request ~ \$2.5M
- Design Status – K-1 Building & Athletics Improvements
  - Athletic Improvements – Drawings are at Schematic Design
  - Building – Nearing completion of the Design Development phase of drawings
- Ongoing discussions with the Church property owners
  - Develop the legal documentation for the use of their property for the Realigned Road.
- Formal appraisal of the land required for the realignment is complete
- DRAFT Traffic Study complete and ready for submission
  - Will be submitted to PennDOT and Township with Land Development Submission
- Land Development submission: March/April following acquisition/easement documentation

# DISCUSSION

Dismal Run