

Finch Elementary FY27 Budget Feedback Meeting



February 12th, 2026



GO TEAM MEMBERS 2025-2026

Roll Call



NAME	ROLE
Dr. Tara Spencer	Principal
Kashon Caldwell	Parent
Edwina Lawrence	Parent
Jasmina King	Parent
Erin Gore	Staff
Tesia Germain	Staff
Tatyana McKnight	Staff
Eric Thomas	Community Member
Dr. Terence Lester	Community Member
Rekina LeCount	Swing Seat

Action Items



APPROVAL OF THE AGENDA



APPROVAL OF PREVIOUS
MINUTES

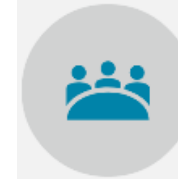
Purpose, Agenda, & Norms

During this meeting the GO Team will discuss the proposed school budget, how it supports the school's programmatic needs and aligns to the School's Strategic Plan. The GO Team will also **review and provide feedback on proposed use of school-level flexibility** in the FY27 Budget.

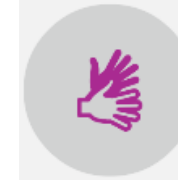
Meeting Agenda

- I. Call to Order
- II. Roll Call; Establish Quorum
- III. Action Items
 - a. Approval of Agenda
 - b. Approval of Previous Minutes for January 29, 2026
- IV. Discussion Items
 - a. Feedback on SY27 Budget
- V. Announcements
 - a. Winter Break Recess- February 18-20 (Staff)
 - b. Winter Break Recess- February 16-20 (No School for Students)
 - c. Random Acts of Kindness Week- February 9-13
 - d. Complete Budget Training to be eligible to vote on Budget at the next meeting
 - e. Declare your Candidacy for GO TEAM Feb. 1- 28
 - f. Read Across America and College and Career Week March 2-6
 - g. Next meeting March 12, 2026
- VI. Adjournment

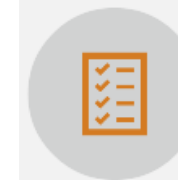
Meeting Norms



This is a meeting of the GO Team. Only members of the team may participate in the discussion. Any members of the public present are here to quietly observe.

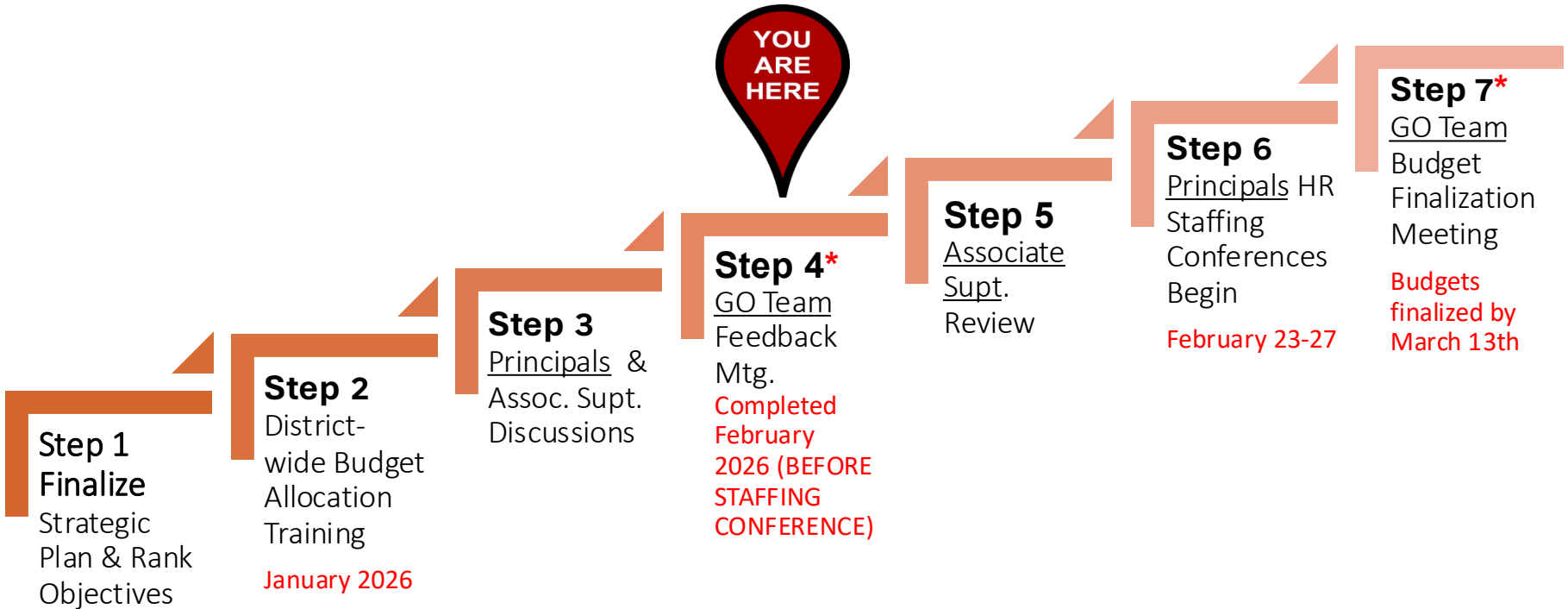


We invite and welcome contributions of every member and listen to each other.



We will follow the agenda as noticed to the public and stay on task.

FY 27 GO Team Budget Development Process Timeline



GO Teams are encouraged to have ongoing conversations

* GO Teams will need to take **ACTION** on the budget at these meetings.



Finch Elementary School FY27 Strategy and Budget Alignment

Strategic Resource Allocation to Support Student Outcomes

One District. One Goal. Every Child.

Strategic Plan 2025-2030

Finch Elementary is committed to nurturing accountable, proactive, and compassionate citizens through student focused learning, collaboration, and equity-empowering every child to reach their greatest potential with integrity and commitment.

A community school where teachers plan intentionally, students embrace academic struggle, and the community's values align with the school's.

Goal #1

Increase the % of students in grades 3-5 scoring in proficient or above in Reading to 35% by May 2030.

Goal #2

Increase the % of students in grades 3-5 scoring in proficient or above in Math to 35% by May 2030.

Goal #3

Increase the CCPRI Student Attendance Rate to 76.86% by May 2030.

“Getting Back to Basics”

We Are Strengthening Our Instructional Core

- Ensure that every classroom delivers high-quality Tier 1 reading and math instruction daily by establishing and implementing non-negotiable instructional practices such as standards-aligned learning targets, explicit modeling, guided practice, checks for understanding, student discourse and daily writing.
- Foster college and career readiness by cultivating strong academic habits, critical thinking, and student ownership of learning through evidence-based literacy practices and integrated STEAM instruction that prepare students to apply knowledge across disciplines.

We Are Caring For Every Child

- Consistently provide a proactive Tier 1 behavior program that teaches, models, and reinforces positive behavior expectations for all students.
- Address attendance as a relationship and support issue, not just compliance, by identifying barriers early and responding with targeted supports.
- Ensure a coordinated system of Social Emotional Learning that confirms every student is known, supported, and connected to at least one caring adult in the building.

We Are Sparking Student Curiosity

- Design instruction around inquiry, real-world problems, and student voice, ensuring learning is relevant, rigorous, and connected to students’ lived experiences and community context.
- Ensure a school culture where teachers and leaders feel valued, supported, and developed, mirroring the engagement and curiosity we expect from students through job embedded professional development and by further establishing teacher-leader pathways.

“Community of Believers”

Our Strength is Our Team

- Ensure intentional, inclusive leadership opportunities that allow staff to co-lead school improvement, ensuring decisions are informed by those closest to the work.
- Ensure schoolwide systems that care for adults as whole people, recognizing that staff well-being is foundational to student success.
- Use collaboration time intentionally to build and continuously foster shared accountability, trust, and continuous improvement.

Our Responsibility Is Shared

- Leverage community resources and partnerships to remove barriers and support whole-child needs.
- Design family engagement systems that honor families as co-educators and decision-makers, to continually build trust and encourage voice.

Our School Is Efficient & Effective

- Ensure all budget decisions are data driven, transparent, and clearly tied to student achievement, well-being, and family access.
- Extend resources through strategic partnerships and grant funding to increase student achievement, wrap-around supports, and family engagement.

Strategic Plan Objective Rankings

FY27 Ranked Objectives

Insert the Strategic Objectives as ranked by the GO Team from Highest to Lowest

- **Focus on Reading and Math as a foundational skill.**
- **Ensure every student reaches content mastery.**
- **Ensure students are college and career ready.**
- **Create a safe, nurturing and caring environment for all students.**
- **Improve teacher efficacy and growth-mindedness.**
- **Improve leadership capacity and opportunities.**
- **Build systems and resources to support the school's priorities.**
- **Inform and engage the school's families and community.**

Strategic Plan Objective Rankings w/School Context

<p>FY27 Ranked Objectives <i>Insert the Strategic Objectives as ranked by the GO Team from Highest to Lowest</i></p>	<p>What Does This Mean for Finch Elementary School in the 2026-2027 School Year?</p>
<ul style="list-style-type: none"> • Focus on Reading and Math as a foundational skill. 	<p>Through strong PLCs and data driven practices, we will focus on reading and math as foundational skills means ensuring every student develops strong literacy and numeracy abilities that serve as the gateway to all future learning</p>
<ul style="list-style-type: none"> • Ensure every student reaches content mastery. 	<p>Ensuring strong Tier 1 instruction across all classrooms using shared frameworks and expectations.</p>
<ul style="list-style-type: none"> • Ensure students are college and career ready. 	<p>Ensure every student reads proficiently, writes effectively, and demonstrates strong math problem-solving skills. Connect learning to science, technology, engineering, arts, and math to build curiosity, innovation, and future-ready skills, through experiences in the STEM Lab.</p>
<ul style="list-style-type: none"> • Create a safe, nurturing and caring environment for all students. 	<p>Continue Strong Tier 1 behavior systems with PBIS practices that teach expectations, recognize positive behavior, and provide consistent support.</p>
<ul style="list-style-type: none"> • Improve teacher efficacy and growth-mindedness. 	<p>Provide ongoing professional learning through targeted coaching, collaborative planning, and job-embedded professional development aligned to school priorities.</p>
<ul style="list-style-type: none"> • Improve leadership capacity and opportunities. 	<p>Provide continuous training, coaching, and support to build strong instructional and organizational leaders.</p>
<ul style="list-style-type: none"> • Build systems and resources to support the school’s priorities. 	<p>Leverage external organizations and wraparound services to expand support for students and families.</p>
<ul style="list-style-type: none"> • Inform and engage the school’s families and community. 	<p>Provide clear and consistent communication to families through multiple platforms. Collaborate with local organizations to provide resources, enrichment, and wraparound support for students and families.</p>

Strategic Use of Resources *(Required)*

Focus Area	Strategic Objective	FY27 Resource Recommendation	Additional Information (OPTIONAL)
<p>We Are Strengthening Our Instructional Core</p>	<p>Develop a literate community in which all students read and write with clarity and fluency across the curriculum.</p>	<ul style="list-style-type: none"> • Maintain all classroom teachers • Maintain Turnaround Reading Teacher/Writing Specialist <ul style="list-style-type: none"> • Instructional Coach 	
<p>We Are Caring For Every Child</p>	<p>We will continue prioritizing a whole-child approach by sustaining a full-time school counselor, strengthening PBIS implementation, and intentionally integrating Social-Emotional Learning (SEL) within daily instructional practices.</p>	<p>Maintain Fulltime Counselor and .5 FTE for SSW</p>	
<p>We Are Sparking Student Curiosity</p>	<p>Continue STEM Lab as a dynamic learning environment that sparks curiosity, promotes innovation, and strengthens problem-solving through hands-on, inquiry-based experiences aligned to literacy, mathematics, and science standards.</p>	<p>Maintain Stem Lab Teacher Stem Lab Resources</p>	



Finch Elementary School

FY27 Proposed Use of Staffing & Non-Staffing Allocation and School-Level Flexibility

One District. One Goal. Every Child.

Summary Tab Overview

Position Title	Baseline	Staffed	Dif	Earnings	Comments
All General Fund Positions	53.00	51.10	(1.90)		
ELEMENTARY TEACHER	13.00	11.50	(1.50)		
Teacher Kindergarten	2.00	2.00	-		
Teacher 1st Grade	2.00	2.00	-		
Teacher 2nd Grade	3.00	2.00	(1.00)		
Teacher 3rd Grade	2.00	2.00	-		
Teacher 4th Grade	2.00	2.00	-		
Teacher 5th Grade	2.00	1.50	(0.50)		
Teacher Math K-5		-	-		
Teacher Reading K-5		-	-		
Teacher Science K-5		-	-		

The Summary Tab provides a summary of the staff in our school. The columns show how many positions are:

- **Baseline** – District’s recommended staffing for positions where there is some school-level flexibility with staffing the position.
- **Staffed** – This shows how the principal is proposing to staff the position for the FY27 school year.
- **Difference**—This shows the difference between the recommendation from the District and the Principal's proposed FY27 staffing plan.
- **Comments:** The principal must provide comments if there is a difference in what is Baseline and Staffed. Principals and GO Teams will discuss the rationale for the use of school-level flexibility.

FY27 Staffing Proposal and Use of School-Level Flexibility

(Required)

School	Finch Elementary
Location	0105
Level	ES
Principal	Tara Spencer
Projected Enrollment	264
Total Budget	\$ 6,938,535
Unallocated Balance	\$ (317,659)

Enrollment by Grade Level		
KK	37	6th
1st	41	7th
2nd	45	8th
3rd	55	9th
4th	31	10th
5th	55	11th
		12th

Left to Allocate:

-

Position Title	Account	Function	Object	Average Cost	Baseline	Staffed	Dif
All General Fund Positions					57.00	62.60	5.60
ELEMENTARY TEACHER					13.00	13.00	-
Teacher Kindergarten	150120201051011	1000	1100	\$ 131,119	2.00	2.00	-
Teacher 1st Grade	150120501051021	1000	1100	\$ 131,119	2.00	2.00	-
Teacher 2nd Grade	150120601051021	1000	1100	\$ 131,119	2.00	3.00	1.00
Teacher 3rd Grade	150120701051021	1000	1100	\$ 131,119	3.00	2.00	(1.00)
Teacher 4th Grade	150120801051051	1000	1100	\$ 131,119	2.00	3.00	1.00
Teacher 5th Grade	150120901051051	1000	1100	\$ 131,119	2.00	1.00	(1.00)
Teacher Math K-5	150124301051021	1000	1100	\$ 131,119		-	-
Teacher Reading K-5	150123001051021	1000	1100	\$ 131,119		-	-
Teacher Science K-5	150124801051021	1000	1100	\$ 131,119		-	-

FY27 Non-Staffing Tab Overview

The **Non-Staffing Tab** shows how funds are allocated for non-staff items in the school. There is school-level flexibility for most of these items. The tab has columns for:

Description	Rec.	Allocation	Diff	Notes
Reserve	\$ 95,045	\$ 95,045	\$ -	
Custodian Overtime	\$ 1,650			
School Resource Officer Overtime	\$ 4,000			
Teaching/Other Supplies	\$ 18,650		(\$ 18,650)	
Media Supplies	\$		\$ (2,984)	
Academic Stipends		\$ 20,500	\$ -	
Fine Arts St	0	\$ -	\$ -	
Teacher Subs	\$ 49,984	\$ 49,984	\$ -	
Substitute FICA	\$ 725	\$ 725	\$ -	

Example

- **Recommended**—District’s recommended amount to spend on the line item.
- **Allocation** – This shows how much the principal is proposing to allocate towards the line item in FY27.
- **Difference**—This shows the difference between the recommended amount and the allocation.
- **Notes:** The principal must provide comments if there is a difference in what is Recommended and what is Allocated. Principals and GO Teams will discuss the rationale for the use of school-level flexibility.

FY27 Non-Staffing Proposal and Use of School-Level Flexibility

(Required)

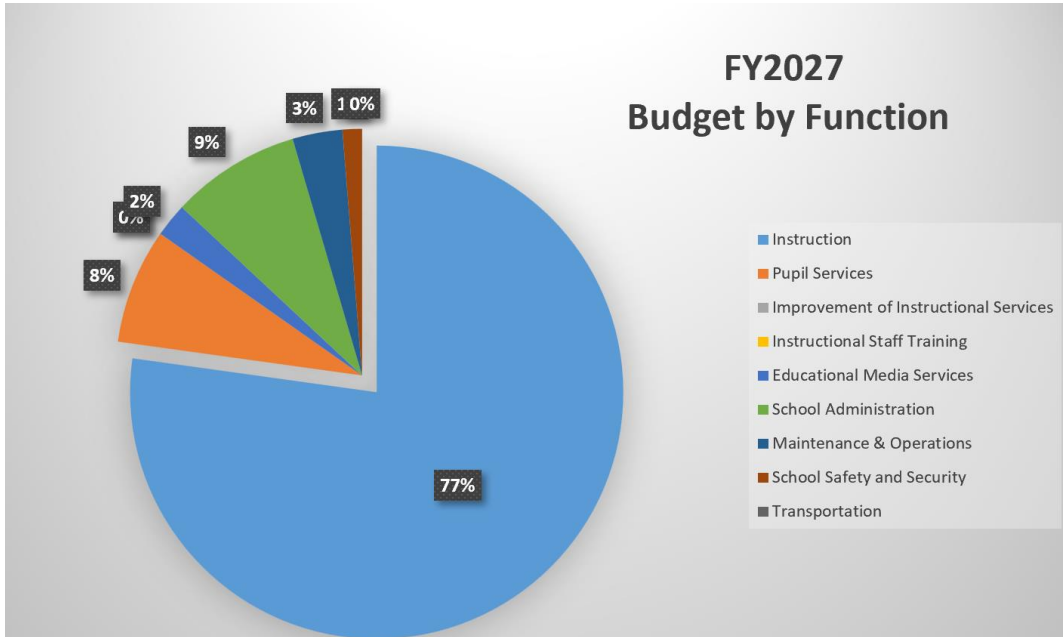
Accounting Unit	Acct	SubAc	Description	Rec.	Allocation	Diff
150120001051021	1000	9990	Reserve	\$ 72,736	\$ 72,736	\$ -
150120001051021	1000	1104	Teacher Stipends		\$ 7,000	\$ 7,000
150110101059990	2400	1412	Secretary Overtime		\$ 1,000	\$ 1,000
150670101059990	2600	1862	Custodian Overtime	\$ 1,650	\$ 1,852	
150652101059990	2660	1822	School Resource Officer Overtime	\$ 4,000		
150120001051021	1000	3000	Contracted Services for Instruction			\$ -
150110101051210	2210	3000	Contracted Services for Professional Development			\$ -
150120001051320	2700	5190	Student Transportation-Charter Buses, Breeze Cards			\$ -
150110101059990	2100	5300	Postage			\$ -
150120001051021	1000	5320	Web-based Subsc and Licenses/ Computer Software			\$ -
150169701051021	1000	5300	Signature Program Communication/Shipping Fee			\$ -
150120001051210	2213	5800	Instructional Employee Travel			\$ -
150110101051211	2400	5800	Administrative Employee Travel			\$ -
150169701051210	2210	5800	Signature Programming Travel			\$ -
150110101059990	2400	5800	Mileage			\$ -
150120001051320	2700	5950	Student Transportation-APS Buses			\$ -
150662001051320	2700	5950	District Funded Field Trips	\$ -		\$ -
150120001051021	1000	6100	Teaching/Other Supplies	\$ 13,200	\$ 15,500	\$ 2,300
150169701051021	1000	6100	Signature Program Supplies			\$ -
150120001051021	1000	6150	Instructional Equipment/Furniture			\$ -
150120001051021	1000	6160	Computer Equipment			\$ -
150150501051310	2220	6100	Media Supplies	\$ 2,112		\$ (2,112)
150120001051021	1000	6420	Book Other Than Textbooks for Instruction			\$ -
150110101051210	2213	6420	Book Other Than Textbooks for PD			\$ -
150122001051021	1000	6410	Textbooks			\$ -
150122001051021	1000	6400	Digital/Electronic Textbooks		\$ 30,000	\$ 30,000

FY27 BUDGET BY FUNCTION

(Required)

Account Description	FTE	Budget	Per Pupil
Instruction	44.10	\$ 5,235,247	\$ 19,830
Pupil Services	5.00	\$ 511,933	\$ 1,939
Improvement of Instructional Services	1.00	\$ -	\$ -
Instructional Staff Training	-	\$ -	\$ -
Educational Media Services	1.00	\$ 149,632	\$ 567
School Administration	4.50	\$ 576,395	\$ 2,183
Maintenance & Operations	3.00	\$ 221,895	\$ 841
School Safety and Security	1.00	\$ 86,654	\$ 328
Transportation	-	\$ -	\$ -
Total	59.60	\$ 6,781,757	\$ 25,688

School	Finch Elementary
Location	0105
Level	ES
Principal	Tara Spencer
Projected Enrollment	264



Discussion of Reserve Funds

One District. One Goal. Every Child.

Plan for FY27 Leveling Reserve *(Required)*

\$72,736

FOCUS AREA	STRATEGIC PLAN OBJECTIVE	FY27 Resource Recommendation	Additional Information(OPTIONAL)
<p>We Are Strengthening Our Instructional Core</p>	<p><u>Supplying and equipping the media center</u> is essential to advancing literacy and technology goals by ensuring students have equitable access to high-quality texts, digital resources, and research tools that support reading comprehension, writing development, and critical thinking.</p>	<p>\$9,000</p>	
<p>We Are Strengthening Our Instructional Core</p>	<p>Providing <u>stipends</u> to teachers supports professional learning by valuing educator time, increasing participation in high-quality training, and ensuring consistent implementation of instructional priorities beyond the contracted school day. Stipends enable teachers to engage in targeted learning aligned to school improvement goals, strengthen instructional practices, and accelerate student outcomes by building staff capacity and sustaining meaningful professional growth.</p>	<p>\$30,000</p>	
<p>We Are Strengthening Our Instructional Core</p>	<p>Budgeting for <u>instructional materials and supplies</u> ensures teachers and students have access to high-quality, standards-aligned resources that support effective teaching and meaningful learning experiences. Adequate materials strengthen Tier 1 instruction, support differentiation, and promote student engagement</p>	<p>\$26,236</p>	
<p>We Are Sparking Student Curiosity</p>	<p>Bringing a <u>STEAM truck</u> to the school provides students with hands-on, experiential learning opportunities that spark curiosity, promote innovation, and deepen engagement in science, technology, engineering, arts, and mathematics. These interactive experiences connect classroom learning to real-world applications, inspire problem-solving and creativity, and support the development of critical thinking skills essential for future-ready learners.</p>	<p>\$7,500</p>	

Questions for the GO Team To Discuss



Does the budget proposal support our school's strategic objectives and lead to achieving our goals?



If new positions, resources, or programs are being added, what data or feedback supports these changes?



What trade-offs being made in this budget? Are any current programs or resources being adjusted or reduced, and how will that impact our students?



If we are sharing staff positions (e.g., nurse, counselor, teacher), how will this affect student support and service delivery at our school?

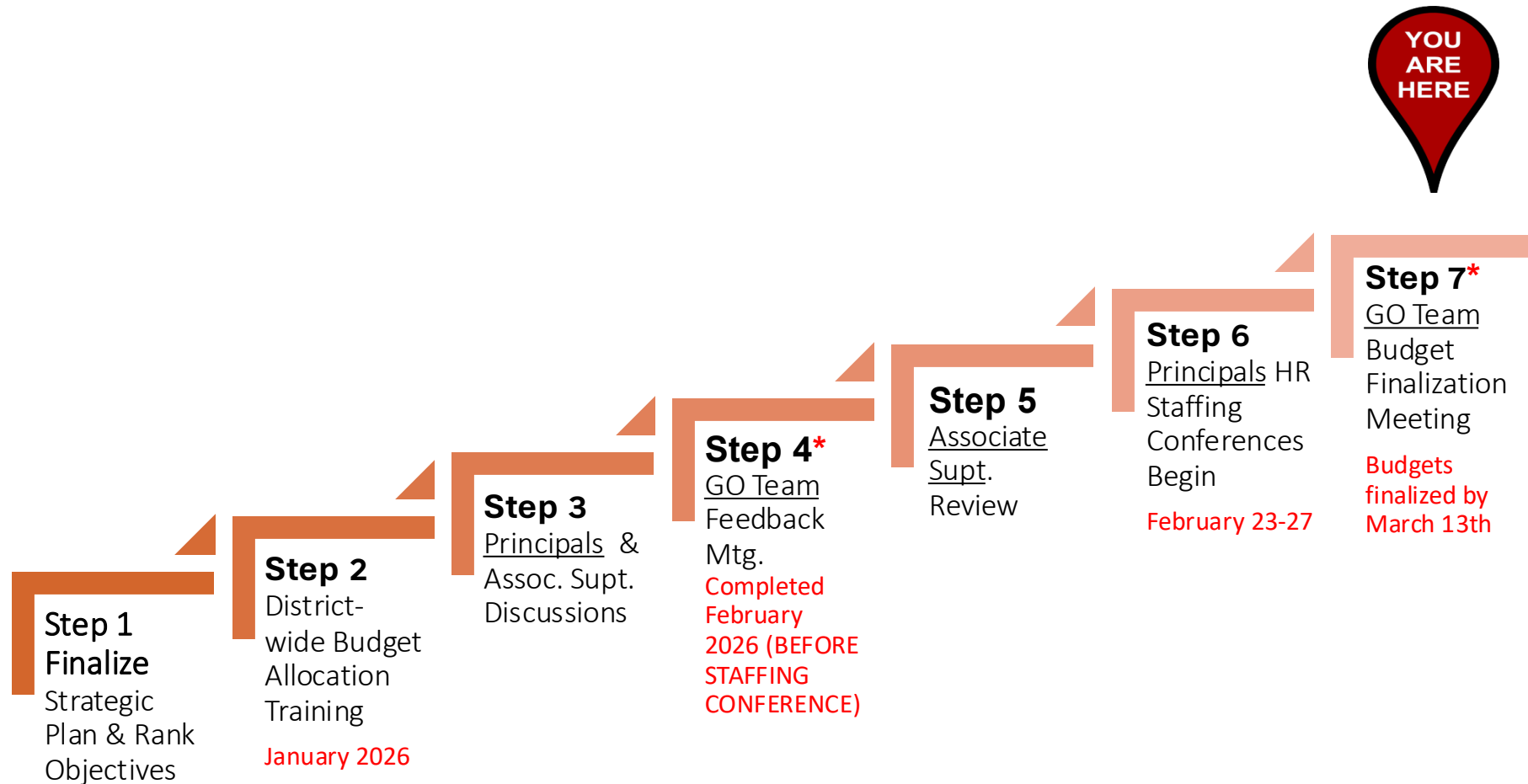
Action on the FY27 Draft Budget

The GO Team needs to **TAKE ACTION** (vote) on the proposed FY27 budget.

After the motion and a second, the GO Team may have additional discussion.

Once discussion is concluded, the GO Team will vote.

Next Meeting: Budget Finalization Meeting (Insert Date, Time)



GO Teams are encouraged to have ongoing conversations

* GO Teams will need to take **ACTION** on the budget at these meetings.

A woman with glasses and braided hair, wearing a green shirt, stands in a classroom. She is looking upwards and to the left. The background shows a classroom setting with a whiteboard, a desk, and a trash can. A red banner is overlaid on the image, containing the text "Information Items, Announcements and Public Comment".

Information Items, Announcements and Public Comment

One District. One Goal. Every Child.

ANNOUNCEMENTS

- a. **Winter Break Recess- February 18-20 (Staff)**
- b. **Winter Break Recess- February 16-20 (No School for Students)**
- c. **Random Acts of Kindness Week- February 9-13**
- d. **Complete Budget Training to be eligible to vote on Budget at the next meeting**
- e. **Declare your Candidacy for GO TEAM Feb. 1- 28**
- f. **Read Across America and College and Career Week March 2-6**
- g. **Next meeting March 12, 2026**



GO Team Declarations: Open NOW – Feb. 28

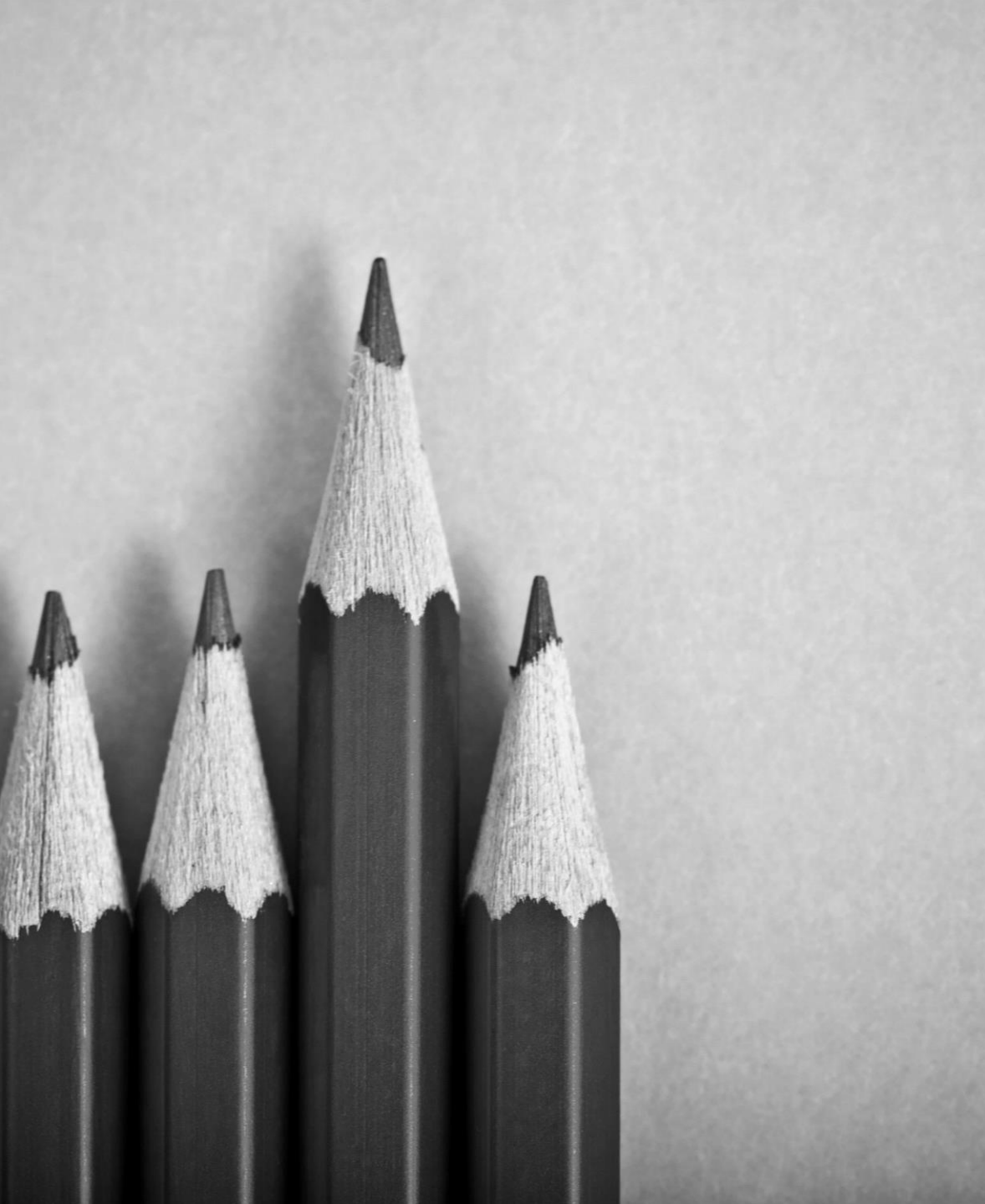
During the GO Team election, each school will fill:

- 2 parent/guardian seats
- 2 instructional staff seats

Scan the QR Code to
Declare Your Candidacy!



<http://tinyAPS.com/?2026GOTeamDeclaration>



Adjournment

