



Saint Louis Public Schools With Community At Its Core



Dr. Myra Berry, Interim Superintendent

February 10, 2026



SLPS Strategic Values: Pathway to Portrait of a Graduate



Highly Effective
Educators and
Leaders



Authentic Family
and Community
Partnership



Equitable and
Multiple Sources
of Data



Joyful and
Engaged
Students



Personalized
Supports and
Innovative Pathways



College and
Career Ready
Critical Thinkers

College & Career Ready

Change Agent

Critical Thinker

Communicator

Competent

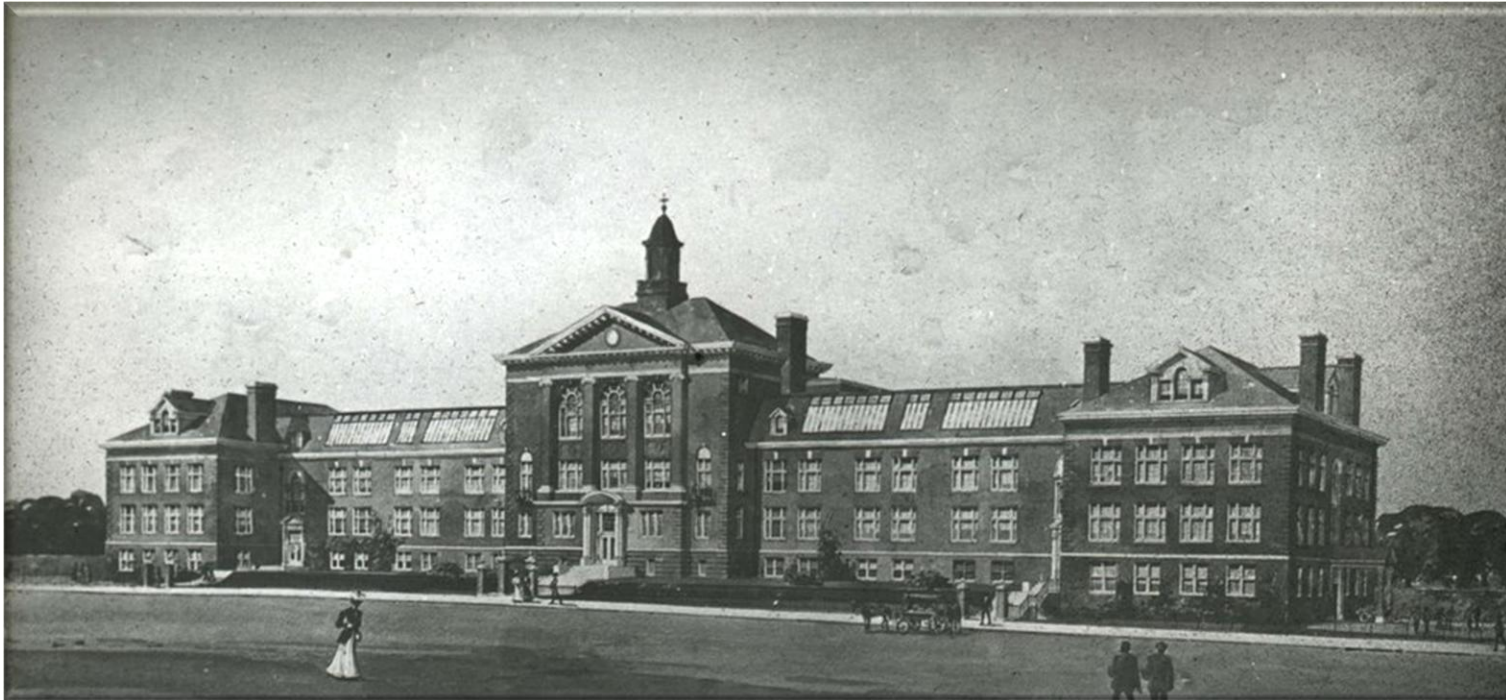
Culturally Aware

Collaborator



We Are More Than A Single Story...

- SLPS was founded April 5, 1838
- First in the United States to adopt the Braille System in 1860
- First public Kindergarten in North America in 1873
- First high school for African American students west of the Mississippi in 1875



Sumner High School

St. Louis Public Schools: At a Glance



17,351

Enrollment PK-12

62

District Schools

68

Academic Programs

33.4%

Student Mobility

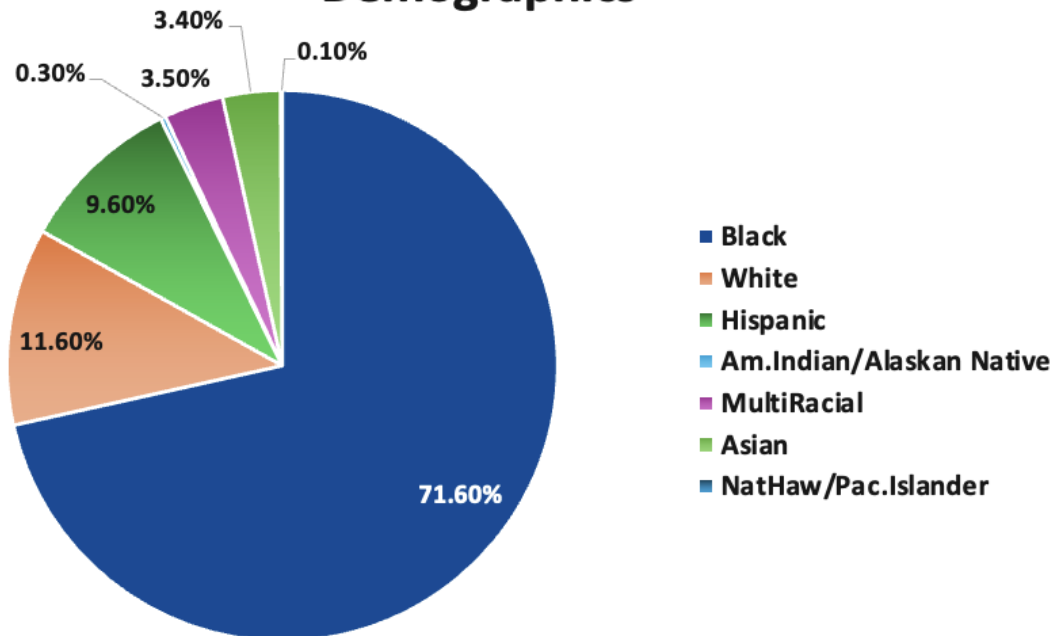
15.5%

English Language
Learners

14%

Special Education

Demographics



District Priority Areas: CORE FOUR



Attendance

- Ensuring students are present, engaged, and connected every day – because learning starts with showing up.

Literacy

- Strengthening early and ongoing literacy to build strong readers, confident learners, and academic success across all grades.

Finance

- Restoring fiscal stability through transparency, accountability, and systems that support sustainable student outcomes.

Operations (Transportation)

- Maintaining facilities, transportation, and operational infrastructure that support uninterrupted learning.
- Delivering safe, reliable, and efficient transportation

Owning Our Data



Our Data...



Why Does This Matter...



Next Steps...

Attendance Snapshot: APR Context



2025 APR Results

52.5%

Proportional Attendance

2025-2026 Semester 1

60%

Estimated Proportional Attendance*

On-Track Attendance
(Semester 1)

57.9%

% of Students at or above
90 % Attendance

*Semester 1 proportional attendance is an internal estimate based on available attendance data and DESE methodology for calculating proportional attendance.



Why Attendance Matters

- Attendance is a leading indicator of academic progress, graduation, and long-term student success.
- SLPS serves a high-need student population where attendance challenges are often driven by structural and systemic barriers.
- Addressing attendance requires early identification, consistent implementation, and equitable supports across schools.

Attendance: Districtwide Next Steps



- **Districtwide Commitment:** St. Louis Public Schools is launching a districtwide attendance campaign focused on getting students to school every day. The campaign includes targeted efforts to reduce chronic absenteeism and improve overall daily attendance. This comprehensive campaign is in development and will be launched by April 1, 2026.
- **Standardized Focus:** Building a culture of belonging-attending, avoiding pitfalls, community messaging, targeted intervention, and addressing specific barriers.
- **Accountability:** On-going review of attendance practices and outcomes to ensure consistency and track improvement.
- **Clear Messaging:** Showing Up Is a Community Effort, Being Present is Being Powerful- Together; We Are Mighty!

TARGET: increase district proportional attendance rate by 30 percentage points by May 2028

MSIP 6 Annual Performance Report 2022-2025

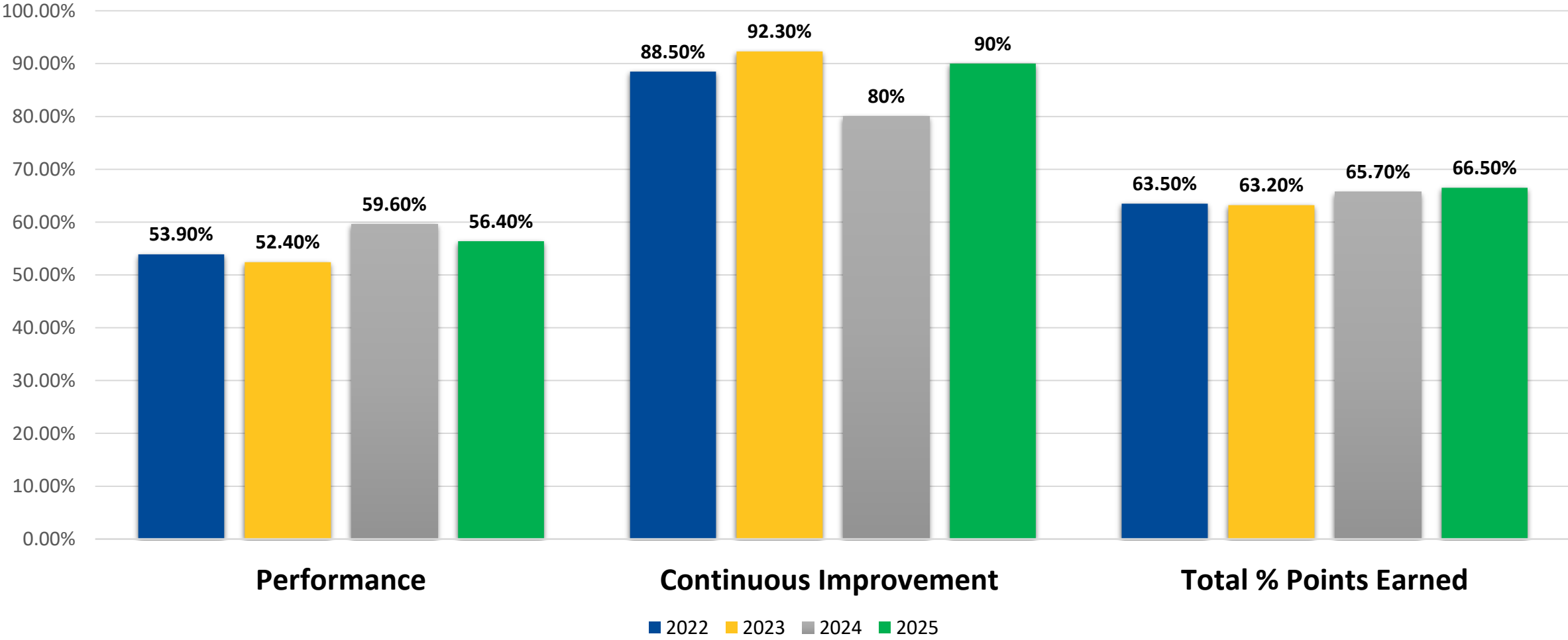


MSIP 6 Annual Performance Report (APR)		Points Possible	Points Earned	% Points Earned
2025 (Year 4)	Performance:	140	79	56.4%
	Continuous Improvement:	60	54	90.0%
	Total:	200	133	66.5%
2024 (Year 3)	Performance:	140	83.5	59.6%
	Continuous Improvement:	60	48	80.0%
	Total:	200	131.5	65.7%
2023 (Year 2)	Performance:	140	73.4	52.4%
	Continuous Improvement:	52	48	92.3%
	Total:	192	121.4	63.2%
2022 (Year 1 – Pilot)	Performance:	128	69	53.9%
	Continuous Improvement:	52	46	88.5%
	Total:	180	115	63.8%

MSIP 6 Annual Performance Report 2022-2025



MSIP 6 Year-by-Year Comparison



2025 MSIP 6 Composite APR & Accreditation Overview



2025 MSIP 6 Composite Annual Performance Report (APR)

The 2025 Composite APR includes data from the 2023, 2024 and 2025 APRs.

	Points Possible	Points Earned	% Points Earned
Performance:	140.0	79.6	56.8%
Continuous Improvement:	60.0	52.5	87.5%
Total:	200.0	132.1	66.0%

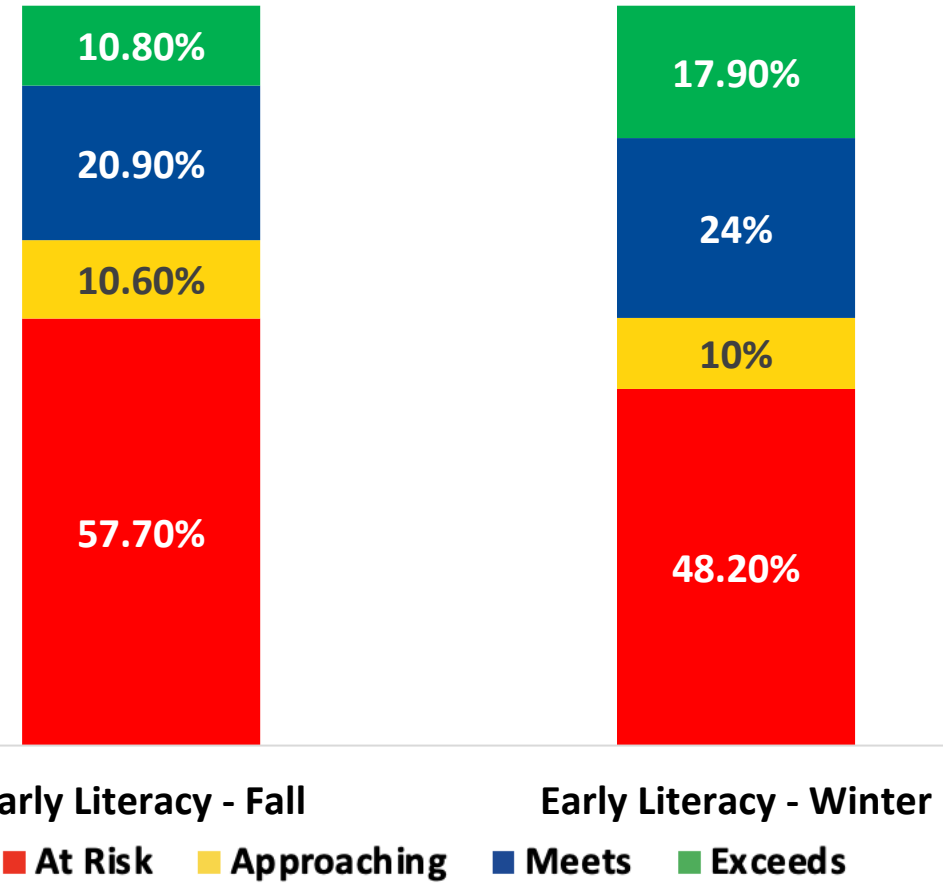
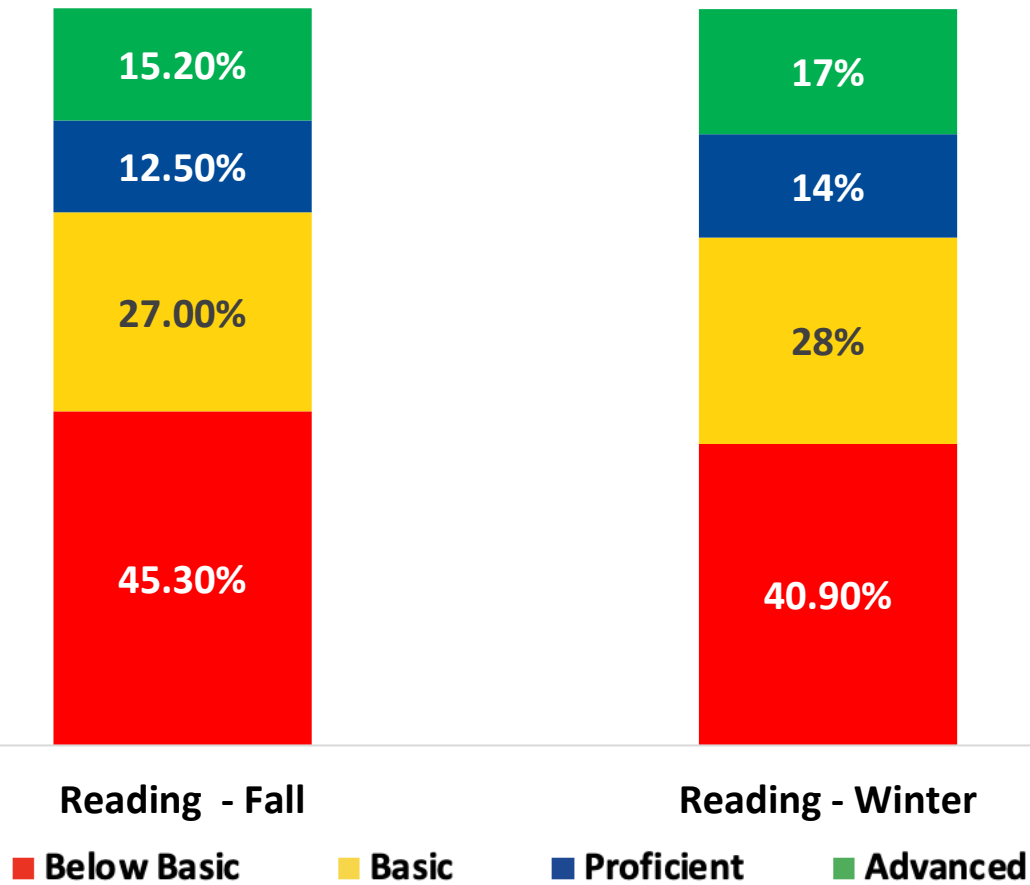
- **Composite APR = Two Consecutive 3-Year Composites used for accreditation**
(Composite 1 = 2023–2025, Composite 2 = 2024–2026)
- **2025 = Baseline Year for MSIP 6 accreditation calculations**
- **No classification change** this year; used to establish trend for 2026 Composite 2
- **Accreditation Thresholds:**
 $\geq 95\%$ = Distinction $70\text{--}94.9\%$ = Accredited $50\text{--}69.9\%$ = Provisional $< 50\%$ = Unaccredited
- **Current Composite 1 Average: 66% → Baseline within provisional range**

Current Literacy Performance: STAR Benchmarks



Student Performance Distribution by STAR Reading Benchmark Level (2025–2026)

Student Performance Distribution by STAR EL Benchmark Level (2025–2026)



(DESE SB 681)

Supporting Evidence for Literacy Initiatives



Selected 95 Percent Group Pilot Schools: APR Performance Trends

School	APR % 23-24	APR % 24-25	+Change
Gateway Elem	30.4%	40.2%	+9.8
Laclede	19.2%	46.3%	+27.10
Lyon	41.6%	61.9%	+20.30
Pamoja@ Cole	22.3%	58.3%	+36.00

95 Percent Group Phonics –
Early Indicator (STAR Early Literacy)

25.0 % → 56.7 %

**Proficient/Advanced: +31.7
percentage points**

Lyon, Fall to Winter, Year 2



Why Literacy Matters

- Literacy is the foundation of learning. Reading, writing, speaking, and comprehension are essential for success in every academic area.
- Strong literacy builds critical thinking, problem-solving, and the ability to understand complex ideas.
- Students who read proficiently are more likely to graduate, pursue careers, and thrive beyond school.

District Commitment

- St. Louis Public Schools will continue to use evidence-based literacy practices aligned to the science of reading across all classrooms using timely data to monitor progress, intervene early, and adjust instruction to ensure student growth. We will engage families and the community as essential partners in building strong readers.

Literacy Next Steps



Districtwide Campaign:
Literacy for the Lou

K-8 Implementation of **95 Percent Group Phonics**
Supplemental Materials

High Quality **Tier 1**
Instruction

LETRS Training Access

- 92 LETRS-certified teachers in the district
- 47 teachers enrolled for 25-26
- Launching next cohort in August 2026

Providing **ongoing professional learning, coaching, and support** to strengthen literacy instruction in every classroom

Engaging families and **community partners** to support literacy beyond the classroom

- District-wide Spring Reading Challenge launching next month

Finance – Challenges



Audit

- Audit Delay 3 years in a row. With the 23-24 FY Audit being completed in March of 2025
- Submitted 24-25 Audited Financial Statements on January 31, 2026.

Budgeting

- Projected fund balance spending in 23-24 FY-roll over the next couple of years.
- Schools not reaching enrollment capacity

Grants Management & Procurement

- Outdated financial policies and procedures
 - Travel
 - Procurement
 - Cash Management
- Internal Controls

Finance – Strategic Actions and Next Steps



Audit

- Clear timelines and accountability measures to prevent delays.
- Coordination with district auditors to develop an action plan.
- Working with expert financial consultants by March 2026

Budgeting

- FY27 budget development is underway with a focus on accuracy, transparency, and alignment to district priorities.
- Engage district leadership and departments to strengthen budget planning

Grants Management & Procurement

- Updated financial policies (2/2025)
 - Updated travel policies
 - Added FTE to support travel and P-Card
 - New Procurement Manual (5/2025)
 - Implementation of online bidding platform
- Ongoing staff training



Why Finance Matters

- Strong financial management ensures dollars are spent efficiently and directly support teaching, learning, and student services.
- Clear, accurate financial practices strengthen trust with families, staff, the Board, and the community.
- Sound finances allow SLPS to plan sustainably, avoid disruption, and invest in long-term improvement.

District Commitment

- St. Louis Public Schools remains firmly committed to transparency, accountability and compliance with all state reporting requirements as we continue to strengthen the district's financial systems and long-term fiscal foundation.



Transportation: Key Metrics for Zūm

Key Performance Indicators

9,700

Average Students
Assigned

7,100

Average Ridership

96%

Average On-Time
Performance

99.5%

Driver Attendance

9,200

Parents Signed up
for App

Family Engagement & Feedback

59,890

Zum ride parent ratings

4.8

Rating (out of 5 stars)

90%

5-Star Ratings





Why Transportation Matters

- Reliable transportation is often the difference between students being present or absent.
- On-time arrivals and departures create predictable school days and reduce disruptions to learning.
- Safe, dependable service strengthens family confidence and connection to schools.

District Commitment

- St. Louis Public Schools is committed to providing safe, reliable, and equitable transportation so every student that is transported can arrive to school ready to learn. We will continue to strengthen systems, communication, and accountability to ensure families can depend on transportation services.

Transportation Next Steps



- **Operational Adjustments**

- Updating student information and adjusting runs per change requests by parents and administrators
- Refine consolidated routes to reduce travel time
- Weekly updates and review of KPIs (i.e., ridership, on-time performance, driver attendance, etc.)

- **Safety Review**

- Evaluate and adjust bus stop assignments to ensure the safety and accessibility
- Conduct monthly meeting with transportation provider

- **Compliance**

- Quarterly compliance and regulations monitoring

- **Communication Improvements**

- Maintain app-based notifications as primary communication tool
- Utilize Parent Square for transportation updates to parents weekly



We Are More Than A Single Story

Vision

- Saint Louis Public Schools is the district of choice for families in the St. Louis region that provides a world-class education and is nationally recognized as a leader in student achievement and teacher quality.

Mission

- We will provide a quality education for all students and enable them to realize their full intellectual potential.

