

New Elementary School on Greendale Road



➤ **Completed Work:**

- The site was covered in melting snow and ice. Not all site items could be observed.
- Laying of interior CMU masonry has restarted in the Cafeteria after the snow.
- Installation of above grade MEP continues.
- The retention pond is frozen over but appears to be operating properly. Water was not observed in the lower pond.

➤ **Upcoming Work / Look Ahead:**

- Continue setting and filling the ICF forms.
- Continue placing concrete floor slabs.
- Continue laying of masonry in the kitchen area.
- Continue placement of the hollow core planks.

New Elementary School on Greendale Road



South Side of the Site and Building



Week Ending February 13, 2026

New Elementary School on Greendale Road



Laying of Masonry at the West Interior Cafeteria Wall

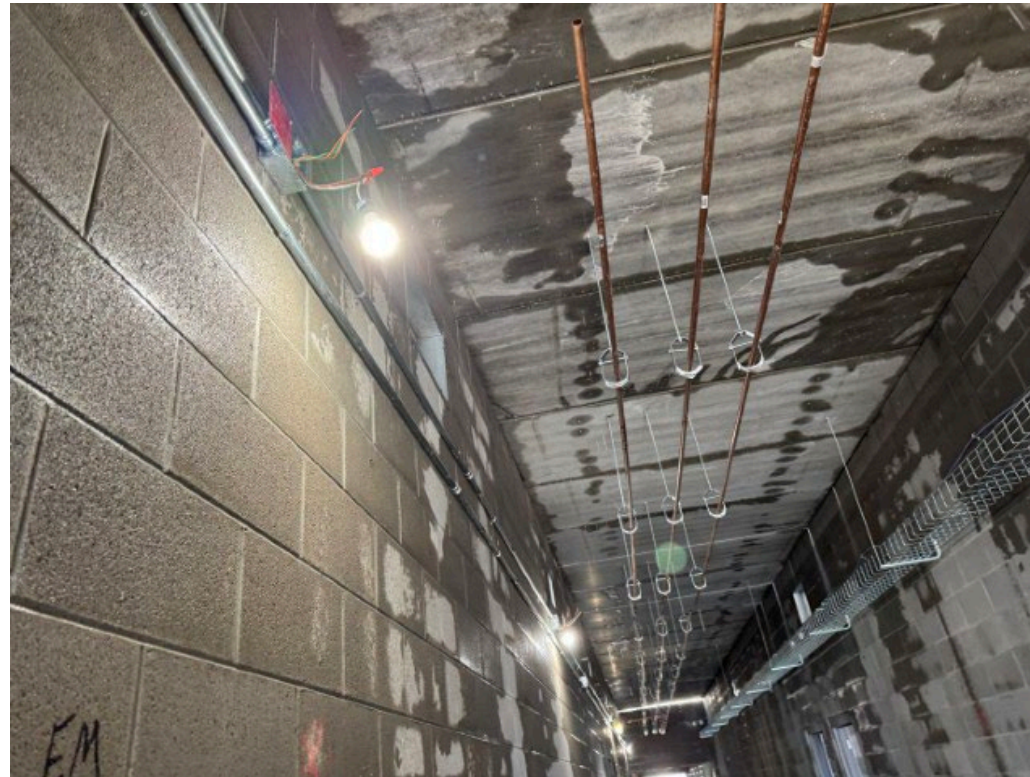


Week Ending February 13, 2026

New Elementary School on Greendale Road



Copper line and wire pathway Installation at Corridor C02

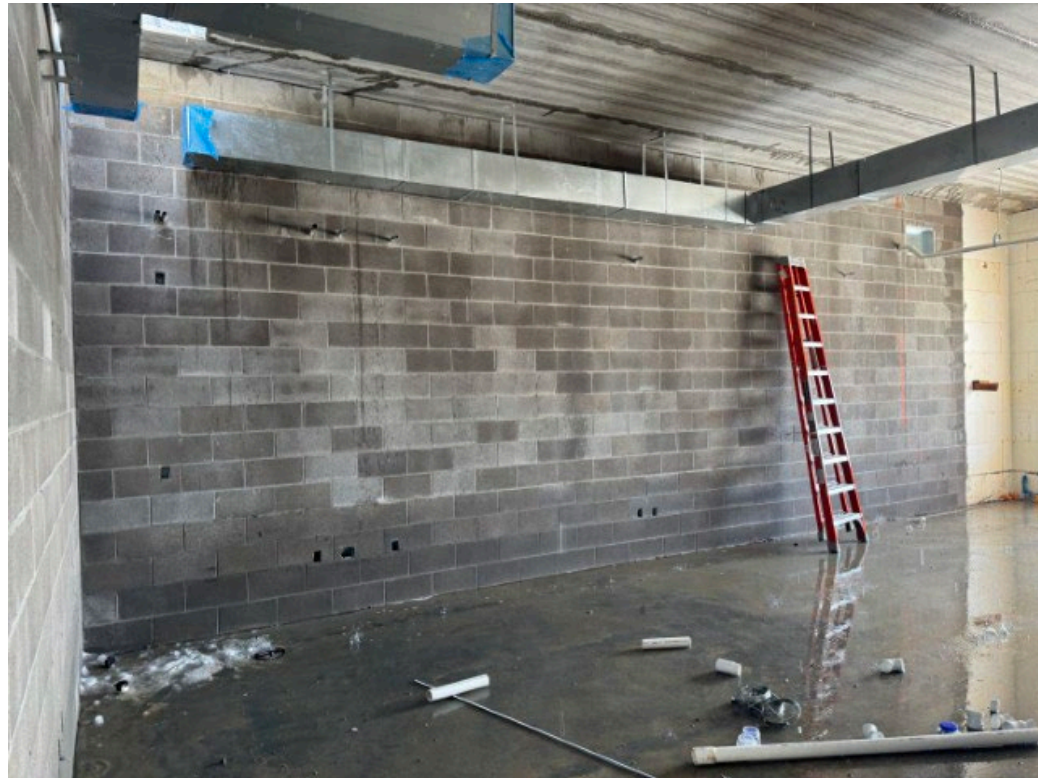


Week Ending February 13, 2026

New Elementary School on Greendale Road



Installation of Ductwork has Started



Week Ending February 13, 2026

New Elementary School on Greendale Road



Upper Retention Pond



Week Ending February 13, 2026

New Elementary School on Greendale Road



Lower Retention Pond



Week Ending February 13, 2026