

# Section D: School Locations

## Contents

<b>General Information .....</b>	<b>3</b>
Our Schools .....	3
School Quality Profiles .....	4
Feeder Patterns .....	4
School District Maps .....	5
<b>School Budget Overview .....</b>	<b>9</b>
Overview of School Budgets.....	9
Budget Summary by Schools.....	10
<b>Elementary Schools.....</b>	<b>11</b>
Agnor Elementary School .....	12
Baker-Butler Elementary School.....	14
Broadus Wood Elementary School.....	16
Brownsville Elementary School .....	18
Crozet Elementary School.....	20
Mary Carr Greer Elementary School (Greer).....	22
Hollymead Elementary School .....	24
Ivy Elementary School .....	26
Mountain View Primary School.....	28
Mountain View Upper Elementary School.....	30
Virginia L. Murray Elementary School (Murray).....	32
Red Hill Elementary School .....	34
Scottsville Elementary School.....	36
Stone-Robinson Elementary School.....	38
Stony Point Elementary School.....	40
Woodbrook Elementary School.....	42
<b>Middle Schools .....</b>	<b>45</b>
Jackson P. Burley Middle School (Burley) .....	46
Joseph T. Henley Middle School (Henley) .....	48
Journey Middle School.....	50
Lakeside Middle School.....	52

---

Leslie H. Walton Middle School (Walton).....	54
<b>High Schools .....</b>	<b>57</b>
Albemarle High School (AHS).....	58
Monticello High School (MoHS).....	60
Western Albemarle High School (WAHS).....	62
<b>Charter School, Centers &amp; Programs .....</b>	<b>65</b>
Community Lab School (CLS) .....	66
Albemarle Career Exploration (ACE) Academy – Seminole Place Campus.....	68
Albemarle Career Exploration (ACE) Academy – Lambs Lane Campus .....	70
Center for Learning and Growth .....	72
Specialized Academic Center (SAC) and Post High.....	74
<b>Other Multi-School Services .....</b>	<b>76</b>

---

## GENERAL INFORMATION

---

### Our Schools

#### 16 Elementary Schools (PK-5)

- |                            |                                 |                    |
|----------------------------|---------------------------------|--------------------|
| 1. Agnor                   | 7. Hollymead                    | 13. Scottsville    |
| 2. Baker-Butler            | 8. Ivy                          | 14. Stone-Robinson |
| 3. Broadus Wood            | 9. Mountain View Primary        | 15. Stony Point    |
| 4. Brownsville             | 10. Mountain View Upper         | 16. Woodbrook      |
| 5. Crozet                  | 11. Virginia L. Murray (Murray) |                    |
| 6. Mary Carr Greer (Greer) | 12. Red Hill                    |                    |

#### 5 Comprehensive Middle Schools (6-8)

- |                               |                              |
|-------------------------------|------------------------------|
| 1. Jackson P. Burley (Burley) | 4. Lakeside                  |
| 2. Joseph T. Henley (Henley)  | 5. Leslie H. Walton (Walton) |
| 3. Journey                    |                              |

#### 3 Comprehensive High Schools (9-12)

1. Albemarle (AHS)
2. Monticello (MoHS)
3. Western Albemarle (WAHS)

#### 1 Charter School (6-12)

- Community Lab School (CLS)

#### 4 Specialty Centers & Programs

1. ACE Academy Lambs Lane Campus and ACE Academy Seminole Place Campus (formerly Center I) – High school specialty centers (9-12)
2. Center for Learning and Growth – Alternative education center for short-term intervention (6-12)
3. Specialized Academic Center (SAC) – Special education center providing intensive behavioral supports for K-12 students, including those with emotional disabilities, and functional life skills instruction for Post High students (ages 18-22)

## School Quality Profiles

The Virginia Department of Education provides a School Quality Profile for every division and school in the Commonwealth, covering student achievement, college and career readiness, program completion, school safety, teacher quality, and other topics of interest to parents/guardians and the public. Profiles for ACPS and its schools are available online at: [schoolquality.virginia.gov/divisions/albemarle-county-public-schools](https://schoolquality.virginia.gov/divisions/albemarle-county-public-schools)

## Feeder Patterns

Due to the large geographic size of Albemarle County, our schools are divided into three “feeder patterns” according to geographical area: Northern, Southern, and Western. A feeder pattern consists of the elementary, middle, and high schools through which students progress.

	Northern	Southern	Western
Elementary Schools	Agnor* Baker-Butler Broadus Wood Greer Hollymead Stony Point* Woodbrook	Mountain View Upper* Red Hill Scottsville Stone-Robinson* Stony Point*	Brownsville Crozet Ivy Murray
Middle Schools	Burley** Journey Lakeside	Burley** Walton	Henley
High Schools	Albemarle	Monticello	Western Albemarle

\*Student body splits at the middle school level:

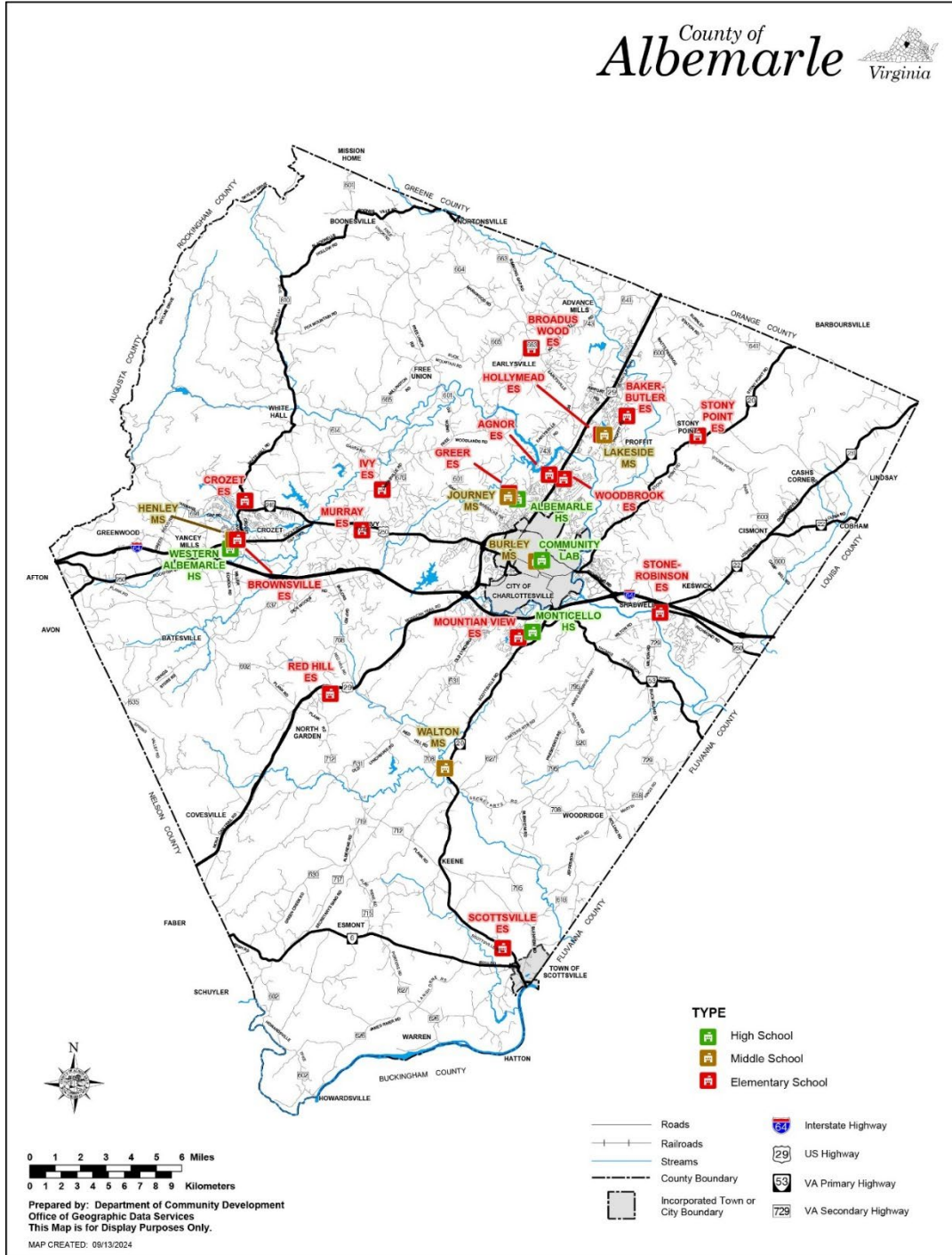
- Agnor students move on to Burley or Journey Middle School, then Albemarle High School.
- Stony Point students move on to either to Burley Middle School and then to Monticello High School or to Lakeside Middle School and then to Albemarle High School.
- Mountain View Upper and Stone-Robinson students move on to Burley or Walton Middle School, then to Monticello High School.

\*\*Student body splits at the high school level:

- Burley students move on to either Albemarle or Monticello High School.

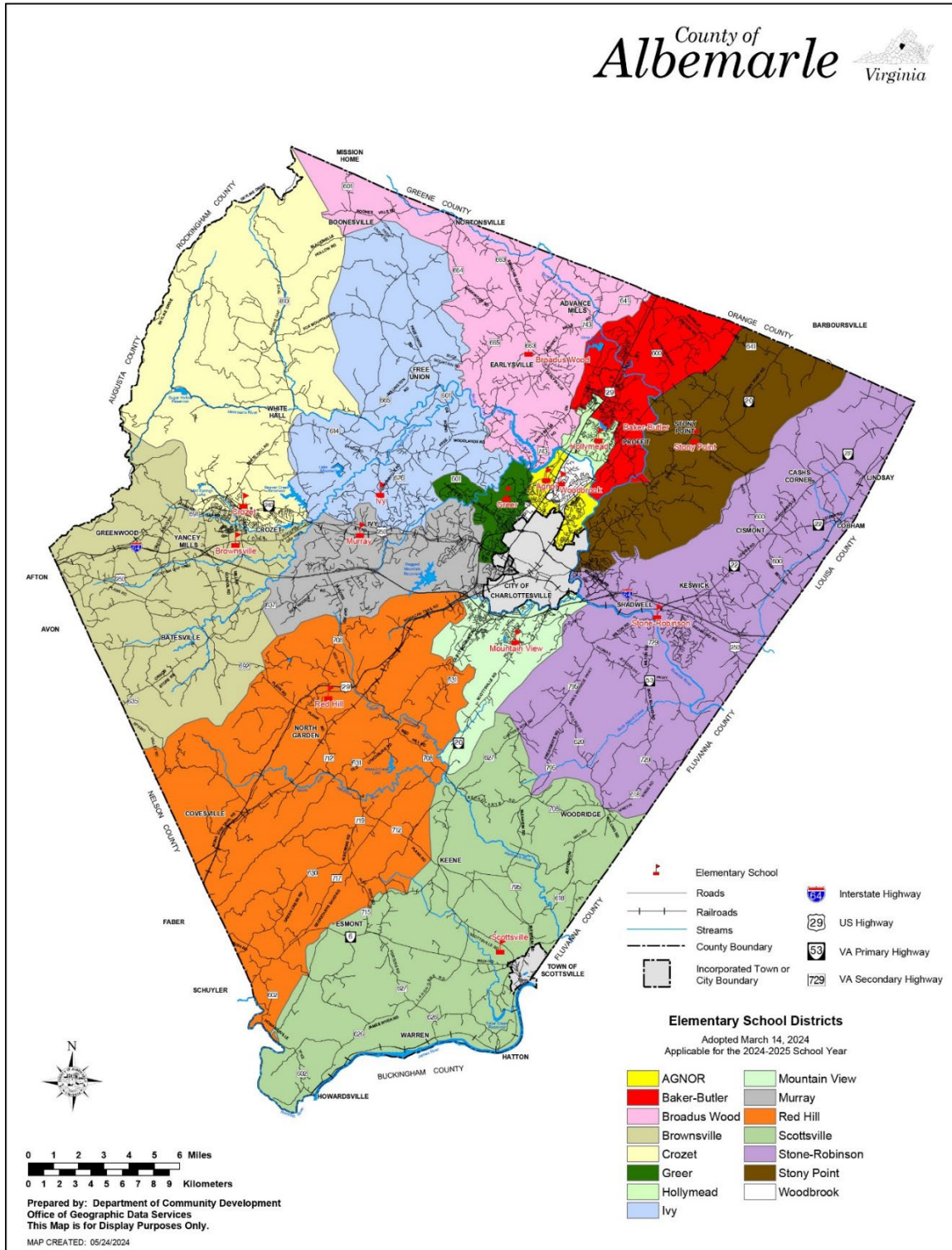
# School District Maps

## School Locations



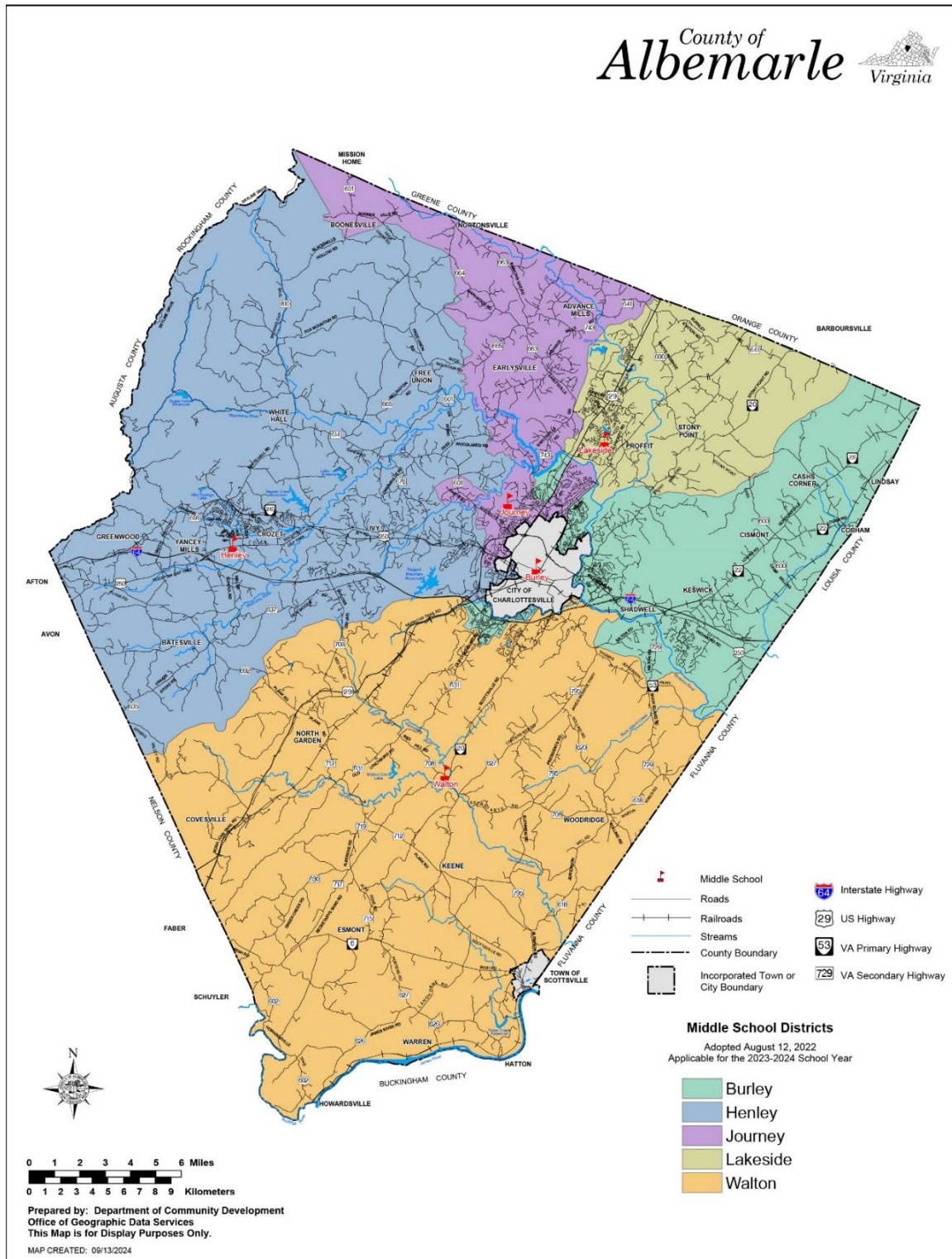
While Albemarle County has attempted to ensure that the information contained on the maps is accurate and reflects the property's characteristics, Albemarle County makes no warranties, expressed or implied, concerning the accuracy, completeness, reliability, or suitability of this information. Albemarle County does not assume any liability associated with the use or misuse of this information.

# Elementary School Districts



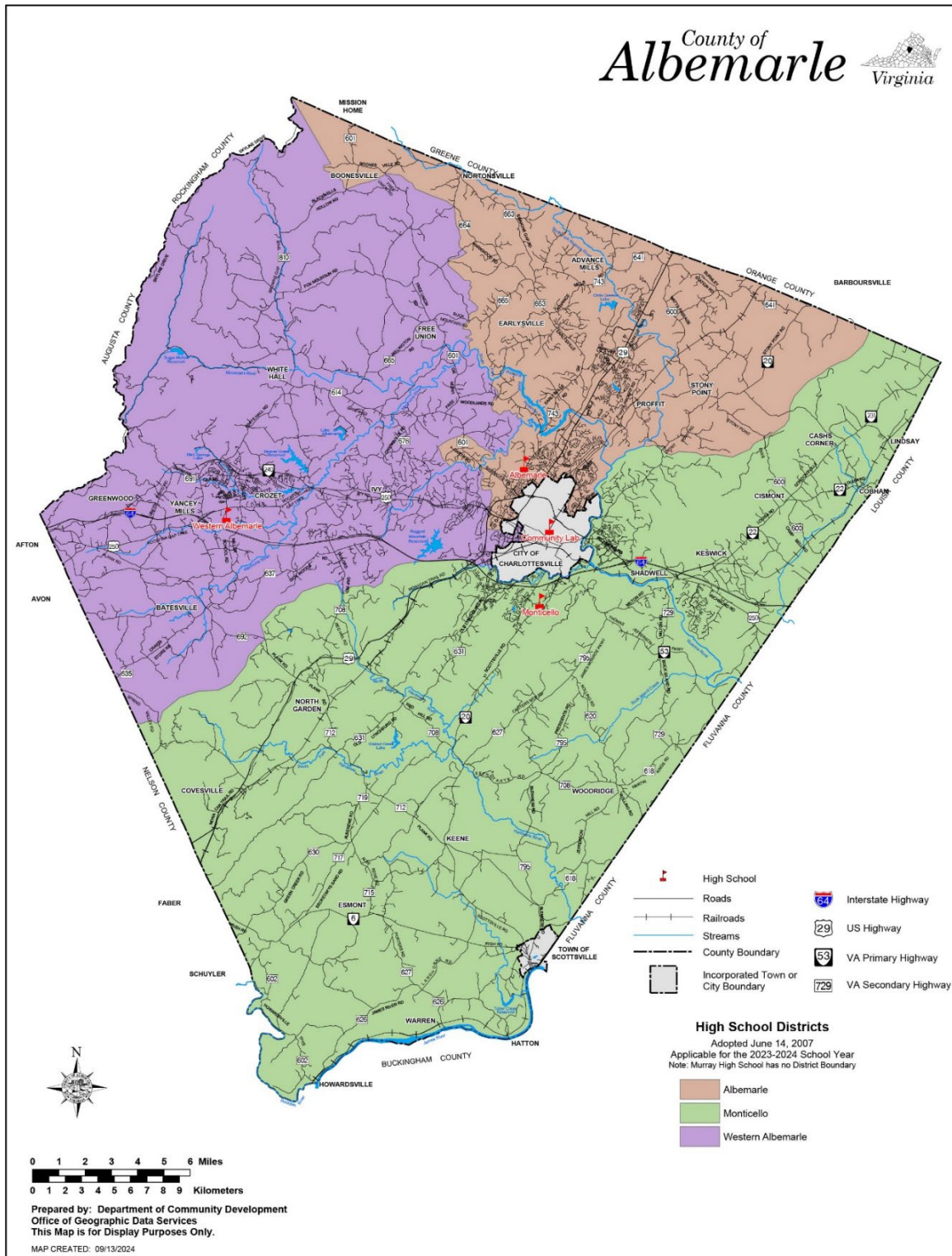
While Albemarle County has attempted to ensure that the information contained on the maps is accurate and reflects the property's characteristics, Albemarle County makes no warranties, expressed or implied, concerning the accuracy, completeness, reliability, or suitability of this information. Albemarle County does not assume any liability associated with the use or misuse of this information.

# Middle School Districts



While Albemarle County has attempted to ensure that the information contained on the maps is accurate and reflects the property's characteristics, Albemarle County makes no warranties, expressed or implied, concerning the accuracy, completeness, reliability, or suitability of this information. Albemarle County does not assume any liability associated with the use or misuse of this information.

# High School Districts



While Albemarle County has attempted to ensure that the information contained on the maps is accurate and reflects the property's characteristics, Albemarle County makes no warranties, expressed or implied, concerning the accuracy, completeness, reliability, or suitability of this information. Albemarle County does not assume any liability associated with the use or misuse of this information

---

# SCHOOL BUDGET OVERVIEW

---

## Overview of School Budgets

School budgets are primarily driven by and developed based on projected student enrollment and demographics. Schools are provided staffing resources based on the Division's staffing standards and formulas. The remaining budget is allocated for general operations and determined by various factors, including student enrollment, demographics, and performance. Section G contains detailed information about these budget factors and allocations.

## FY 2026/27 Changes

Changes in School Budgets are described in Section A and include:

### Baseline Adjustments

- Staff cost updates for salary and benefits
- Restructuring staffing formulas to account for grade level sections, offset by changes in Tiered Services and Reading Specialists
- Updates and restructure of school projections, program budgets, and supplemental pay budgets to reflect requirements of a new time and attendance system

### Non-Discretionary Changes

- Rebenchmarking for enrollment and demographics
- Reduction in VRS rates, Increase in health rates

### New School Cost Increases

- Mountain View Upper Elementary School, ACE Academy – Lambs Lane Campus

### Workforce Investments

- Compensation Increase, Working Conditions and Benefits

### Service Reductions

- Eliminate Teaching Assistant & EDEP position allocations

### Learning for All Proposals

- FY 26 Continuation: Scholars Studios Sustainability (Classroom Teacher Staffing)
- New: Math & Data Support Specialists
- New: Special Education Services

## Budget Summary by Schools

School Type	23-24 Actuals	24-25 Actuals	25-26 Adopted	26-27 Draft	Increase	Increase %
<b>Elementary Schools</b>	<b>\$84,103,423</b>	<b>\$89,608,182</b>	<b>\$92,666,707</b>	<b>\$99,790,684</b>	<b>\$7,123,977</b>	<b>7.7%</b>
Agnor	\$5,818,631	\$6,809,830	\$7,452,880	\$7,832,735	\$379,855	5.1%
Baker-Butler	\$8,925,979	\$8,692,487	\$8,977,121	\$9,717,283	\$740,162	8.2%
Broadus Wood	\$4,179,102	\$4,388,539	\$4,509,326	\$4,678,862	\$169,536	3.8%
Brownsville	\$6,769,510	\$6,975,531	\$6,963,997	\$7,082,037	\$118,040	1.7%
Crozet	\$6,072,737	\$6,374,854	\$6,457,928	\$6,399,571	(\$58,357)	-0.9%
Greer	\$7,307,885	\$7,856,702	\$8,230,439	\$8,287,730	\$57,291	0.7%
Hollymead	\$4,914,486	\$5,796,505	\$6,230,571	\$6,449,576	\$219,005	3.5%
Ivy	\$4,244,130	\$4,338,641	\$4,507,995	\$4,737,417	\$229,422	5.1%
Mountain View Primary	\$9,482,721	\$10,105,868	\$10,588,033	\$6,563,127	(\$4,024,906)	-38.0%
Mountain View Upper				\$6,500,251	\$6,500,251	
Murray	\$3,926,020	\$4,145,603	\$4,007,733	\$4,251,483	\$243,750	6.1%
Red Hill	\$2,915,328	\$3,475,274	\$3,331,524	\$3,867,350	\$535,826	16.1%
Scottsville	\$3,210,148	\$3,451,763	\$3,393,745	\$3,771,176	\$377,431	11.1%
Stone-Robinson	\$5,724,282	\$6,135,685	\$6,249,915	\$6,552,713	\$302,798	4.8%
Stony Point	\$3,088,134	\$3,613,519	\$3,749,859	\$4,174,970	\$425,111	11.3%
Woodbrook	\$7,524,330	\$7,447,380	\$8,015,641	\$8,924,403	\$908,762	11.3%
<b>Middle Schools</b>	<b>\$34,831,426</b>	<b>\$37,066,714</b>	<b>\$39,748,284</b>	<b>\$41,515,460</b>	<b>\$1,767,176</b>	<b>4.4%</b>
Burley	\$6,834,559	\$7,044,438	\$7,431,723	\$7,588,712	\$156,989	2.1%
Henley	\$8,345,774	\$9,048,382	\$9,701,025	\$10,162,816	\$461,791	4.8%
Journey	\$7,813,324	\$8,608,469	\$9,400,133	\$9,826,684	\$426,551	4.5%
Lakeside	\$6,183,676	\$6,641,631	\$7,176,033	\$7,610,225	\$434,192	6.1%
Walton	\$5,654,094	\$5,723,794	\$6,039,370	\$6,327,023	\$287,653	4.8%
<b>High Schools</b>	<b>\$52,573,830</b>	<b>\$55,090,391</b>	<b>\$57,153,346</b>	<b>\$61,399,905</b>	<b>\$4,246,559</b>	<b>7.4%</b>
Albemarle	\$22,110,973	\$23,053,271	\$24,138,974	\$22,589,837	(\$1,549,137)	-6.4%
Monticello	\$15,156,919	\$15,620,069	\$16,103,020	\$15,856,407	(\$246,613)	-1.5%
Western Albemarle	\$13,360,402	\$14,372,959	\$15,479,698	\$16,007,242	\$527,544	3.4%
ACE Academy Seminole	\$1,945,536	\$2,044,093	\$1,431,654	\$1,740,767	\$309,113	21.6%
ACE Academy Lambs Ln				\$5,205,652	\$5,205,652	
<b>Community Lab School</b>	<b>\$3,038,631</b>	<b>\$3,330,731</b>	<b>\$3,453,326</b>	<b>\$3,606,367</b>	<b>\$153,041</b>	<b>4.4%</b>
<b>Newcomer Learning Community</b>		<b>\$391,824</b>	<b>\$552,320</b>		<b>(\$552,320)</b>	
<b>Specialized Academic Center</b>	<b>\$623,529</b>	<b>\$797,208</b>	<b>\$3,292,395</b>	<b>\$3,434,596</b>	<b>\$142,201</b>	<b>4.3%</b>
<b>Center For Learning &amp; Growth</b>	<b>\$498,867</b>	<b>\$494,701</b>	<b>\$579,649</b>	<b>\$633,934</b>	<b>\$54,285</b>	<b>9.4%</b>
<b>Multi-School Services</b>	<b>\$8,207,116</b>	<b>\$7,725,936</b>	<b>\$11,151,332</b>	<b>\$14,039,911</b>	<b>\$2,888,579</b>	<b>25.9%</b>
<b>CATEC</b>	<b>\$2,257,230</b>					
<b>Total</b>	<b>\$186,134,052</b>	<b>\$194,505,688</b>	<b>\$208,597,359</b>	<b>\$224,420,857</b>	<b>\$15,823,498</b>	<b>7.6%</b>

---

## ELEMENTARY SCHOOLS

---

Albemarle County Public Schools (ACPS) operates 16 elementary schools, serving preschool through fifth-grade students. The following school profiles include contact information, facility details, feeder pattern pathways, and a brief introduction to each school. Additionally, student enrollment and school expenditure data provide historical context and projections for the upcoming school year.

### **Elementary Schools in ACPS:**

- Agnor
- Baker-Butler
- Broadus Wood
- Brownsville
- Crozet
- Mary Carr Greer (Greer)
- Hollymead
- Ivy
- Mountain View Primary
- Mountain View Upper
- Virginia L. Murray (Murray)
- Red Hill
- Scottsville
- Stone-Robinson
- Stony Point
- Woodbrook

# Agnor Elementary School

Home of the Alligators



## General Information

- **Address:** 3201 Berkmar Drive, Charlottesville, VA 22901
- **Phone:** 434-973-5211
- **Website:** [aes.k12albemarle.org](http://aes.k12albemarle.org)
- **Virginia School Quality Profile:** [schoolquality.virginia.gov/schools/agnor-elementary](http://schoolquality.virginia.gov/schools/agnor-elementary)

## Facility Information

- **Built:** 1992
- **Size:** 80,957 sq. ft.
- **Site:** 19.5 acres
- **Mobile Classrooms:** None
- **Feeder Pattern:** Northern
- **Pathway:** Agnor students move on to Burley or Journey Middle School, then Albemarle High School.

## Who We Are: A Snapshot

**Agnor Elementary School** provides a safe and trusting learning environment that embraces diversity and our community's rich cultural demographics. We are committed to empowering students to be creative, lifelong learners and productive global citizens through relationships, compassion, and perseverance. As 21<sup>st</sup>-century learners, students will develop into individuals who can adapt, create, collaborate, succeed, and meet the challenges of a constantly evolving world.

## Budget Information

Agnor ▼

Budget Factors	2023-2024	2024-2025	2025-2026	Projected 2026-27	
Total Enrollment	474	523	507	Total Enrollment	504
Students with Disabilities	12.9%	14.5%	12.0%	Preschool Enrollment	54
English Learners	23.0%	26.8%	24.5%	K-12 Enrollment	450
Economically Disadvantaged	44.1%	37.7%	41.0%	Economically Disadvantaged	52.2%

Expense	23-24 Actuals	24-25 Actuals	25-26 Adopted	26-27 Draft	Increase	Increase %
Salary	\$3,958,388	\$4,574,072	\$4,892,637	\$5,109,627	\$216,990	4.4%
Other Wages	\$151,768	\$194,435	\$196,113	\$240,689	\$44,576	22.7%
Benefits	\$1,595,593	\$1,899,952	\$2,256,345	\$2,364,944	\$108,599	4.8%
Operations	\$112,880	\$141,372	\$107,785	\$117,475	\$9,690	9.0%
<b>Total</b>	<b>\$5,818,631</b>	<b>\$6,809,830</b>	<b>\$7,452,880</b>	<b>\$7,832,735</b>	<b>\$379,855</b>	<b>5.1%</b>

State Category Report	23-24 Actuals	24-25 Actuals	25-26 Adopted	26-27 Draft	Increase	Increase %
Instruction	\$5,340,554	\$6,026,301	\$6,720,028	\$7,129,463	\$409,435	6.1%
Admin/Attend& Health	\$79,953	\$323,123	\$212,832	\$190,722	(\$22,110)	-10.4%
Technology	\$116,977	\$127,428	\$136,983	\$108,289	(\$28,694)	-20.9%
Building Services	\$280,051	\$332,546	\$383,037	\$404,261	\$21,224	5.5%
Transportation	\$1,096	\$433				
<b>Total</b>	<b>\$5,818,631</b>	<b>\$6,809,830</b>	<b>\$7,452,880</b>	<b>\$7,832,735</b>	<b>\$379,855</b>	<b>5.1%</b>

# Baker-Butler Elementary School

Home of the Bears



## General Information

- **Address:** 2740 Proffit Road, Charlottesville, VA 22911
- **Phone:** 434-974-7777
- **Website:** [bbes.k12albemarle.org](http://bbes.k12albemarle.org)
- **Virginia School Quality Profile:** [schoolquality.virginia.gov/schools/baker-butler-elementary](http://schoolquality.virginia.gov/schools/baker-butler-elementary)

## Facility Information

- **Built:** 2002
- **Size:** 91,576 sq. ft.
- **Site:** 55.0 acres
- **Mobile Classrooms:** 1
- **Feeder Pattern:** Northern
- **Pathway:** Baker-Butler students move on to Lakeside Middle School, then Albemarle High School.

## Who We Are: A Snapshot

**Baker-Butler Elementary School** strives to reach and to challenge every student, every day. Our mission is to build a strong community of students, teachers, parents, and community partners and to prepare our students to be lifelong learners. Our goal is for our students to be designers, thinkers, and leaders who can be flexible and creative problem solvers. We support students across all traditional academic subjects, as well as in the arts, music, and physical fitness.

## Budget Information

Baker-Butler ▼

Budget Factors	2023-2024	2024-2025	2025-2026	Projected 2026-27	
Total Enrollment	735	692	686	Total Enrollment	703
Students with Disabilities	12.7%	13.7%	14.1%	Preschool Enrollment	44
English Learners	15.8%	17.8%	15.3%	K-12 Enrollment	659
Economically Disadvantaged	28.8%	29.0%	27.0%	Economically Disadvantaged	26.1%

Expense	23-24 Actuals	24-25 Actuals	25-26 Adopted	26-27 Draft	Increase	Increase %
Salary	\$6,051,236	\$5,790,133	\$5,886,193	\$6,342,453	\$456,260	7.8%
Other Wages	\$229,335	\$294,498	\$235,255	\$275,637	\$40,382	17.2%
Benefits	\$2,445,967	\$2,441,801	\$2,715,953	\$2,952,872	\$236,919	8.7%
Operations	\$199,442	\$166,055	\$139,720	\$146,321	\$6,601	4.7%
<b>Total</b>	<b>\$8,925,979</b>	<b>\$8,692,487</b>	<b>\$8,977,121</b>	<b>\$9,717,283</b>	<b>\$740,162</b>	<b>8.2%</b>

State Category Report	23-24 Actuals	24-25 Actuals	25-26 Adopted	26-27 Draft	Increase	Increase %
Instruction	\$8,277,612	\$7,917,288	\$8,278,901	\$8,975,429	\$696,528	8.4%
Admin/Attend& Health	\$84,090	\$161,332	\$161,363	\$202,078	\$40,715	25.2%
Technology	\$175,678	\$184,424	\$186,327	\$165,132	(\$21,195)	-11.4%
Building Services	\$388,479	\$428,920	\$350,530	\$374,243	\$23,713	6.8%
Transportation	\$120	\$522		\$401	\$401	
<b>Total</b>	<b>\$8,925,979</b>	<b>\$8,692,487</b>	<b>\$8,977,121</b>	<b>\$9,717,283</b>	<b>\$740,162</b>	<b>8.2%</b>

# Broadus Wood Elementary School

Home of the Bobcats



## General Information

- **Address:** 185 Buck Mountain Road, Earlysville, VA 22936
- **Phone:** 434-973-3865
- **Website:** [bwes.k12albemarle.org](http://bwes.k12albemarle.org)
- **Virginia School Quality Profile:** [schoolquality.virginia.gov/schools/broadus-wood-elementary](http://schoolquality.virginia.gov/schools/broadus-wood-elementary)

## Facility Information

- **Built:** 1936
- **Size:** 49,852 sq. ft.
- **Site:** 11.7 acres
- **Mobile Classrooms:** None
- **Feeder Pattern:** Northern
- **Pathway:** Broadus Wood students move on to Journey Middle School, then Albemarle High School.

## Who We Are: A Snapshot

At **Broadus Wood Elementary School**, educators and parents work together to foster a dynamic learning community that promotes academic excellence, character development, and lifelong-learning skills. We believe our work empowers students to thrive as well-rounded, productive citizens who will be positioned to succeed well beyond elementary school. Students here develop a love of learning, learn to work collaboratively and independently, and demonstrate respect for and appreciation of others.

## Budget Information

Broadus Wood ▼

Budget Factors	2023-2024	2024-2025	2025-2026	Projected 2026-27	
Total Enrollment	284	282	265	Total Enrollment	282
Students with Disabilities	14.8%	16.3%	16.6%	Preschool Enrollment	18
English Learners	4.2%	3.9%	4.5%	K-12 Enrollment	264
Economically Disadvantaged	18.0%	17.4%	15.8%	Economically Disadvantaged	15.2%

Expense	23-24 Actuals	24-25 Actuals	25-26 Adopted	26-27 Draft	Increase	Increase %
Salary	\$2,822,949	\$2,988,943	\$2,979,236	\$3,043,415	\$64,179	2.2%
Other Wages	\$116,475	\$126,464	\$106,210	\$144,031	\$37,821	35.6%
Benefits	\$1,174,040	\$1,200,895	\$1,350,779	\$1,417,824	\$67,045	5.0%
Operations	\$65,638	\$72,237	\$73,101	\$73,592	\$491	0.7%
<b>Total</b>	<b>\$4,179,102</b>	<b>\$4,388,539</b>	<b>\$4,509,326</b>	<b>\$4,678,862</b>	<b>\$169,536</b>	<b>3.8%</b>

State Category Report	23-24 Actuals	24-25 Actuals	25-26 Adopted	26-27 Draft	Increase	Increase %
Instruction	\$3,833,397	\$4,020,322	\$4,084,037	\$4,224,837	\$140,800	3.4%
Admin/Attend& Health	\$108,414	\$85,583	\$174,757	\$197,436	\$22,679	13.0%
Technology	\$47,517	\$47,734	\$52,694	\$45,865	(\$6,829)	-13.0%
Building Services	\$189,129	\$234,765	\$197,588	\$210,724	\$13,136	6.6%
Transportation	\$644	\$135	\$250		(\$250)	
<b>Total</b>	<b>\$4,179,102</b>	<b>\$4,388,539</b>	<b>\$4,509,326</b>	<b>\$4,678,862</b>	<b>\$169,536</b>	<b>3.8%</b>

# Brownsville Elementary School

Home of the Bees



## General Information

- **Address:** 5870 Rockfish Gap Turnpike, Crozet, VA 22932
- **Phone:** 434-823-4658
- **Website:** [bes.k12albemarle.org](http://bes.k12albemarle.org)
- **Virginia School Quality Profile:** [schoolquality.virginia.gov/schools/brownsville-elementary](http://schoolquality.virginia.gov/schools/brownsville-elementary)

## Facility Information

- **Built:** 1966
- **Size:** 90,550 sq. ft.
- **Site:** 19.5 acres
- **Mobile Classrooms:** None
- **Feeder Pattern:** Western
- **Pathway:** Brownsville students move on to Henley Middle School, then Western Albemarle High School.

## Who We Are: A Snapshot

At **Brownsville Elementary School**, it's our goal to see that each child in our care masters the skills, habits, attitudes, and knowledge necessary to become a lifelong learner and contributing member of society. We recognize that our school is part of our larger community, and we welcome an active and collaborative partnership with our families and the community. Brownsville is a Responsive Classroom school providing engaging instruction that can be observed through continuous improvement, student leadership opportunities, and effective learning partnerships.

## Budget Information

Brownsville ▼

Budget Factors	2023-2024	2024-2025	2025-2026	Projected 2026-27	
Total Enrollment	572	530	504	Total Enrollment	520
Students with Disabilities	12.1%	14.0%	13.7%	Preschool Enrollment	24
English Learners	2.4%	3.6%	3.2%	K-12 Enrollment	496
Economically Disadvantaged	17.7%	12.8%	14.9%	Economically Disadvantaged	14.7%

Expense	23-24 Actuals	24-25 Actuals	25-26 Adopted	26-27 Draft	Increase	Increase %
Salary	\$4,532,596	\$4,643,070	\$4,579,321	\$4,627,385	\$48,064	1.0%
Other Wages	\$163,879	\$279,310	\$191,610	\$199,182	\$7,572	4.0%
Benefits	\$1,932,178	\$1,958,626	\$2,083,059	\$2,140,946	\$57,887	2.8%
Operations	\$140,858	\$94,525	\$110,007	\$114,524	\$4,517	4.1%
<b>Total</b>	<b>\$6,769,510</b>	<b>\$6,975,531</b>	<b>\$6,963,997</b>	<b>\$7,082,037</b>	<b>\$118,040</b>	<b>1.7%</b>

State Category Report	23-24 Actuals	24-25 Actuals	25-26 Adopted	26-27 Draft	Increase	Increase %
Instruction	\$6,259,901	\$6,310,251	\$6,342,829	\$6,378,554	\$35,725	0.6%
Admin/Attend& Health	\$71,357	\$159,778	\$157,183	\$195,945	\$38,762	24.7%
Technology	\$138,702	\$133,664	\$143,412	\$147,743	\$4,331	3.0%
Building Services	\$298,573	\$370,638	\$319,373	\$359,695	\$40,322	12.6%
Transportation	\$978	\$1,200	\$1,200	\$100	(\$1,100)	-91.7%
<b>Total</b>	<b>\$6,769,510</b>	<b>\$6,975,531</b>	<b>\$6,963,997</b>	<b>\$7,082,037</b>	<b>\$118,040</b>	<b>1.7%</b>

# Crozet Elementary School

Home of the Eagles



## General Information

- **Address:** 1407 Crozet Avenue, Crozet, VA 22932
- **Phone:** 434-823-4800
- **Website:** [cres.k12albemarle.org](http://cres.k12albemarle.org)
- **Virginia School Quality Profile:** [schoolquality.virginia.gov/schools/crozet-elementary](http://schoolquality.virginia.gov/schools/crozet-elementary)

## Facility Information

- **Built:** 1990
- **Size:** 90,653 sq. ft.
- **Site:** 21.2 acres
- **Mobile Classrooms:** None
- **Feeder Pattern:** Western
- **Pathway:** Crozet students move on to Henley Middle School, then Western Albemarle High School.

## Who We Are: A Snapshot

The main goal of **Crozet Elementary School** is to empower our students to learn and grow. They learn creatively and innovatively and discover their interests and talents as they grow into lifelong contributors to our local and global community. Crozet Elementary makes every effort to know each student and nurture their mental and physical well-being, while maximizing their potential and talents through Culturally Responsive Teaching, Responsive Classroom approaches, project/problem/passion-based learning, and environmental stewardship. Crozet Elementary – Where We Belong!

## Budget Information

Crozet ▼

Budget Factors	2023-2024	2024-2025	2025-2026	Projected 2026-27	
Total Enrollment	545	571	567	Total Enrollment	574
Students with Disabilities	8.1%	8.9%	7.9%	Preschool Enrollment	18
English Learners	2.0%	2.5%	1.9%	K-12 Enrollment	556
Economically Disadvantaged	14.3%	14.7%	16.0%	Economically Disadvantaged	14.0%

Expense	23-24 Actuals	24-25 Actuals	25-26 Adopted	26-27 Draft	Increase	Increase %
Salary	\$4,173,171	\$4,310,255	\$4,298,893	\$4,196,080	(\$102,813)	-2.4%
Other Wages	\$130,962	\$160,065	\$145,210	\$218,500	\$73,290	50.5%
Benefits	\$1,671,990	\$1,806,841	\$1,894,992	\$1,858,807	(\$36,185)	-1.9%
Operations	\$96,614	\$97,693	\$118,833	\$126,184	\$7,351	6.2%
<b>Total</b>	<b>\$6,072,737</b>	<b>\$6,374,854</b>	<b>\$6,457,928</b>	<b>\$6,399,571</b>	<b>(\$58,357)</b>	<b>-0.9%</b>

State Category Report	23-24 Actuals	24-25 Actuals	25-26 Adopted	26-27 Draft	Increase	Increase %
Instruction	\$5,529,513	\$5,701,749	\$5,792,356	\$5,752,863	(\$39,493)	-0.7%
Admin/Attend& Health	\$86,342	\$204,621	\$223,702	\$195,856	(\$27,846)	-12.4%
Technology	\$141,144	\$147,427	\$138,122	\$126,040	(\$12,082)	-8.7%
Building Services	\$315,459	\$321,021	\$303,698	\$324,762	\$21,064	6.9%
Transportation	\$280	\$36	\$50	\$50	\$0	0.0%
<b>Total</b>	<b>\$6,072,737</b>	<b>\$6,374,854</b>	<b>\$6,457,928</b>	<b>\$6,399,571</b>	<b>(\$58,357)</b>	<b>-0.9%</b>

## Mary Carr Greer Elementary School (Greer)

Home of the Geckos



### General Information

- **Address:** 190 Lambs Lane, Charlottesville, VA 22901
- **Phone:** 434-973-8371
- **Website:** [ges.k12albemarle.org](http://ges.k12albemarle.org)
- **Virginia School Quality Profile:** [schoolquality.virginia.gov/schools/mary-carr-greer-elementary](http://schoolquality.virginia.gov/schools/mary-carr-greer-elementary)

### Facility Information

- **Built:** 1974
- **Size:** 99,258 sq. ft.
- **Site:** 15.0 acres
- **Mobile Classrooms:** 5
- **Feeder Pattern:** Northern
- **Pathway:** Greer students move on to Journey Middle School, then Albemarle High School.

### Who We Are: A Snapshot

At **Greer Elementary School**, the most diverse PK-5 school in Albemarle County, we will reach and support every student, every day. Our mission is to eliminate achievement gaps and to create meaningful learning opportunities for all.

## Budget Information

Greer ▼

Budget Factors	2023-2024	2024-2025	2025-2026	Projected 2026-27	
Total Enrollment	496	520	500	Total Enrollment	496
Students with Disabilities	17.5%	16.5%	17.4%	Preschool Enrollment	48
English Learners	34.3%	37.7%	35.4%	K-12 Enrollment	448
Economically Disadvantaged	54.2%	51.9%	49.4%	Economically Disadvantaged	67.8%

Expense	23-24 Actuals	24-25 Actuals	25-26 Adopted	26-27 Draft	Increase	Increase %
Salary	\$4,937,692	\$5,205,416	\$5,421,808	\$5,401,407	(\$20,401)	-0.4%
Other Wages	\$320,936	\$406,813	\$204,811	\$262,352	\$57,541	28.1%
Benefits	\$1,924,202	\$2,113,651	\$2,493,858	\$2,511,381	\$17,523	0.7%
Operations	\$125,056	\$130,823	\$109,962	\$112,590	\$2,628	2.4%
<b>Total</b>	<b>\$7,307,885</b>	<b>\$7,856,702</b>	<b>\$8,230,439</b>	<b>\$8,287,730</b>	<b>\$57,291</b>	<b>0.7%</b>

State Category Report	23-24 Actuals	24-25 Actuals	25-26 Adopted	26-27 Draft	Increase	Increase %
Instruction	\$6,730,211	\$7,239,982	\$7,602,493	\$7,601,349	(\$1,144)	-0.0%
Admin/Attend& Health	\$134,423	\$171,425	\$168,890	\$201,370	\$32,480	19.2%
Technology	\$125,061	\$131,604	\$131,739	\$135,935	\$4,196	3.2%
Building Services	\$317,562	\$313,459	\$327,317	\$349,076	\$21,759	6.6%
Transportation	\$629	\$232				
<b>Total</b>	<b>\$7,307,885</b>	<b>\$7,856,702</b>	<b>\$8,230,439</b>	<b>\$8,287,730</b>	<b>\$57,291</b>	<b>0.7%</b>

# Hollymead Elementary School

Home of the Hornets



## General Information

- **Address:** 2775 Powell Creek Drive Charlottesville, VA 22911
- **Phone:** 434-973-8301
- **Website:** [hes.k12albemarle.org](https://hes.k12albemarle.org)
- **Virginia School Quality Profile:** [schoolquality.virginia.gov/schools/hollymead-elementary](https://schoolquality.virginia.gov/schools/hollymead-elementary)

## Facility Information

- **Built:** 1972
- **Size:** 66,437 sq. ft.
- **Site:** 20.1 acres
- **Mobile Classrooms:** 3
- **Feeder Pattern:** Northern
- **Pathway:** Hollymead students move on to Lakeside Middle School, then Albemarle High School.

## Who We Are: A Snapshot

**Hollymead Elementary School** is dedicated to providing the highest quality learning experiences to ensure the best possible academic and social-emotional outcomes for our students. We embrace the uniqueness of our students, staff, and families as we work to provide relevant and meaningful learning opportunities that give our students the skills and knowledge they need to succeed in school and as active participants in our growing community.

## Budget Information

Hollymead ▼

Budget Factors	2023-2024	2024-2025	2025-2026	Projected 2026-27	
Total Enrollment	347	452	468	Total Enrollment	482
Students with Disabilities	16.7%	13.3%	14.3%	Preschool Enrollment	12
English Learners	10.1%	13.1%	12.0%	K-12 Enrollment	470
Economically Disadvantaged	17.9%	21.5%	22.9%	Economically Disadvantaged	19.8%

Expense	23-24 Actuals	24-25 Actuals	25-26 Adopted	26-27 Draft	Increase	Increase %
Salary	\$3,363,023	\$3,841,685	\$4,093,172	\$4,177,752	\$84,580	2.1%
Other Wages	\$131,179	\$249,988	\$146,908	\$194,012	\$47,104	32.1%
Benefits	\$1,355,384	\$1,610,877	\$1,892,938	\$1,974,917	\$81,979	4.3%
Operations	\$64,901	\$93,956	\$97,553	\$102,895	\$5,342	5.5%
<b>Total</b>	<b>\$4,914,486</b>	<b>\$5,796,505</b>	<b>\$6,230,571</b>	<b>\$6,449,576</b>	<b>\$219,005</b>	<b>3.5%</b>

State Category Report	23-24 Actuals	24-25 Actuals	25-26 Adopted	26-27 Draft	Increase	Increase %
Instruction	\$4,476,567	\$5,221,074	\$5,772,503	\$5,955,373	\$182,870	3.2%
Admin/Attend& Health	\$85,183	\$183,055	\$148,984	\$182,708	\$33,724	22.6%
Technology	\$90,668	\$96,728	\$97,251	\$78,310	(\$18,941)	-19.5%
Building Services	\$261,163	\$295,627	\$211,833	\$233,185	\$21,352	10.1%
Transportation	\$905	\$22				
<b>Total</b>	<b>\$4,914,486</b>	<b>\$5,796,505</b>	<b>\$6,230,571</b>	<b>\$6,449,576</b>	<b>\$219,005</b>	<b>3.5%</b>

# Ivy Elementary School

Home of the Bluebirds



## General Information

- **Address:** 1610 Owensville Road, Charlottesville, VA 22901
- **Phone:** 434-293-9304
- **Website:** [ies.k12albemarle.org](http://ies.k12albemarle.org)
- **Virginia School Quality Profile:** [schoolquality.virginia.gov/schools/ivy-elementary](http://schoolquality.virginia.gov/schools/ivy-elementary)

## Facility Information

- **Built:** 1988
- **Size:** 56,450 sq. ft.
- **Site:** 17.7 acres
- **Mobile Classrooms:** 4
- **Feeder Pattern:** Western
- **Pathway:** Ivy students move on to Henley Middle School, then Western Albemarle High School.

## Who We Are: A Snapshot

**Ivy Elementary School** is a compassionate and caring community that uplifts and supports one another. Our staff is responsive to the individual needs of students and works to create warm, inclusive classrooms and is dedicated to the study of Culturally Responsive Teaching, Responsive Classroom, and differentiated academic instruction. As Bluebirds, students soar to new heights and stretch themselves through inquiry and curiosity.

## Budget Information

Ivy ▼

Budget Factors	2023-2024	2024-2025	2025-2026	Projected 2026-27	
Total Enrollment	352	358	369	Total Enrollment	369
Students with Disabilities	9.9%	11.2%	10.8%	Preschool Enrollment	0
English Learners	2.8%	2.0%	1.4%	K-12 Enrollment	369
Economically Disadvantaged	10.2%	8.7%	8.4%	Economically Disadvantaged	8.4%

Expense	23-24 Actuals	24-25 Actuals	25-26 Adopted	26-27 Draft	Increase	Increase %
Salary	\$2,873,959	\$2,930,440	\$2,967,404	\$3,056,828	\$89,424	3.0%
Other Wages	\$133,516	\$123,049	\$95,658	\$154,287	\$58,629	61.3%
Benefits	\$1,169,883	\$1,215,563	\$1,354,765	\$1,435,462	\$80,697	6.0%
Operations	\$66,772	\$69,589	\$90,168	\$90,840	\$672	0.7%
<b>Total</b>	<b>\$4,244,130</b>	<b>\$4,338,641</b>	<b>\$4,507,995</b>	<b>\$4,737,417</b>	<b>\$229,422</b>	<b>5.1%</b>

State Category Report	23-24 Actuals	24-25 Actuals	25-26 Adopted	26-27 Draft	Increase	Increase %
Instruction	\$3,854,838	\$3,885,738	\$3,937,488	\$4,132,588	\$195,100	5.0%
Admin/Attend& Health	\$84,493	\$145,955	\$183,021	\$200,370	\$17,349	9.5%
Technology	\$111,918	\$115,044	\$117,679	\$112,435	(\$5,244)	-4.5%
Building Services	\$192,585	\$190,805	\$269,807	\$291,524	\$21,717	8.0%
Transportation	\$296	\$1,097		\$500	\$500	
<b>Total</b>	<b>\$4,244,130</b>	<b>\$4,338,641</b>	<b>\$4,507,995</b>	<b>\$4,737,417</b>	<b>\$229,422</b>	<b>5.1%</b>

# Mountain View Primary School

Home of the Colts



## General Information

At the start of the 2026-27 school year, the former Mountain View Elementary School will transition to Mountain View Primary School and will host Pre-K through second-grade students.

- **Address:** 1757 Avon Street Extended, Charlottesville, VA 22902
- **Phone:** 434-293-7455
- **Website:** [mves.k12albemarle.org](http://mves.k12albemarle.org)
- **Virginia School Quality Profile:** [schoolquality.virginia.gov/schools/mountain-view-elementary](http://schoolquality.virginia.gov/schools/mountain-view-elementary)

## Facility Information

- **Built:** 1990
- **Size:** 94,799 sq. ft.
- **Site:** 16.1 acres
- **Mobile Classrooms:** None
- **Feeder Pattern:** Southern
- **Pathway:** Mountain View Primary students move on to Mountain View Upper Elementary school, then Burley or Walton Middle School, then Monticello High School.

## Who We Are: A Snapshot

**Mountain View Primary School** is committed to creating joyful, inclusive learning experiences for children in PreK–2. Our work will center on building strong relationships, supporting early literacy and foundational math development, and nurturing the social-emotional skills that help children thrive. Working collaboratively with Mountain View Upper Elementary School, we will ensure students develop the strong foundational skills they need to transition confidently and succeed academically. In partnership with families, we will strive to ensure every child feels supported, valued, and challenged as they begin their educational journey.

## Budget Information

Mountain View Primary ▼

Budget Factors	2023-2024	2024-2025	2025-2026	Projected 2026-27	
Total Enrollment	756	770	759	Total Enrollment	417
Students with Disabilities	13.9%	13.5%	14.1%	Preschool Enrollment	72
English Learners	18.0%	18.2%	17.5%	K-12 Enrollment	345
Economically Disadvantaged	40.5%	35.1%	32.0%	Economically Disadvantaged	44.0%

Expense	23-24 Actuals	24-25 Actuals	25-26 Adopted	26-27 Draft	Increase	Increase %
Salary	\$6,419,353	\$6,727,512	\$6,977,194	\$4,276,516	(\$2,700,678)	-38.7%
Other Wages	\$406,112	\$370,710	\$275,386	\$192,340	(\$83,046)	-30.2%
Benefits	\$2,488,696	\$2,799,144	\$3,179,500	\$1,993,101	(\$1,186,399)	-37.3%
Operations	\$168,561	\$208,503	\$155,953	\$101,170	(\$54,783)	-35.1%
<b>Total</b>	<b>\$9,482,721</b>	<b>\$10,105,868</b>	<b>\$10,588,033</b>	<b>\$6,563,127</b>	<b>(\$4,024,906)</b>	<b>-38.0%</b>

State Category Report	23-24 Actuals	24-25 Actuals	25-26 Adopted	26-27 Draft	Increase	Increase %
Instruction	\$8,863,462	\$9,278,895	\$9,828,833	\$5,881,236	(\$3,947,597)	-40.2%
Admin/Attend& Health	\$123,910	\$233,626	\$157,345	\$210,957	\$53,612	34.1%
Technology	\$151,417	\$187,164	\$217,733	\$101,212	(\$116,521)	-53.5%
Building Services	\$343,499	\$405,956	\$384,122	\$369,722	(\$14,400)	-3.7%
Transportation	\$433	\$229				
<b>Total</b>	<b>\$9,482,721</b>	<b>\$10,105,868</b>	<b>\$10,588,033</b>	<b>\$6,563,127</b>	<b>(\$4,024,906)</b>	<b>-38.0%</b>

*Historical actuals shown represent the comprehensive Preschool to 5th grade Mountain View Elementary School before the planned split. The 26-27 Draft Budget shows planned costs for Mountain View Primary School only.*

# Mountain View Upper Elementary School

Home of the Colts

## General Information

Mountain View Upper Elementary School, designed for the third through fifth grade to alleviate overcrowding at the former Mountain View Elementary School, will open for the 2026-27 school year.

- **Address:** 1545 Founders Place, Charlottesville, VA 22902

## Facility Information

- **Built:** 2026
- **Size:** 71,664 sq. ft.
- **Site:** 15.8 acres
- **Mobile Classrooms:** None
- **Feeder Pattern:** Southern
- **Pathway:** Mountain View Upper students previously attended Mountain View Primary School, then move on to Burley or Walton Middle School, then Monticello High School.

## Who We Are: A Snapshot

**Mountain View Upper Elementary School** is proud to be the newest school in Albemarle County and is committed to creating a rigorous, supportive, and engaging learning experience for students in grades 3–5. Building on the strong foundations established at Mountain View Primary School, our work will focus on deepening literacy and mathematics learning while expanding students' ability to think critically, communicate clearly, collaborate effectively, and create with purpose. We will prioritize high expectations and strong instructional practices alongside a culturally responsive, inclusive environment where every student is known, valued, and challenged. Through meaningful relationships, student voice, and leadership opportunities, we will help students grow in confidence, responsibility, and perseverance as learners. Working in close partnership with MVPS, we will ensure a seamless transition for students and a shared commitment to academic growth and well-being. In collaboration with families, we will cultivate a school community where students feel safe to take risks, proud of their progress, and prepared for middle school and beyond.

## Budget Information

Mountain View Upper ▼

### Budget Factors

### Projected 2026-27

Total Enrollment	386
Preschool Enrollment	
K-12 Enrollment	386
Economically Disadvantaged	44.0%

Expense	23-24 Actuals	24-25 Actuals	25-26 Adopted	26-27 Draft	Increase	Increase %
Salary				\$4,220,560	\$4,220,560	
Other Wages				\$224,977	\$224,977	
Benefits				\$1,959,050	\$1,959,050	
Operations				\$95,664	\$95,664	
<b>Total</b>				<b>\$6,500,251</b>	<b>\$6,500,251</b>	

State Category Report	23-24 Actuals	24-25 Actuals	25-26 Adopted	26-27 Draft	Increase	Increase %
Instruction				\$5,866,580	\$5,866,580	
Admin/Attend& Health				\$200,470	\$200,470	
Technology				\$101,212	\$101,212	
Building Services				\$331,989	\$331,989	
<b>Total</b>				<b>\$6,500,251</b>	<b>\$6,500,251</b>	

*Historical actuals for the comprehensive Preschool to 5th grade Mountain View Elementary School are shown in the Mountain View Primary School budget cost center before the planned split. The 26-27 Draft Budget is the first budget year for Mountain View Upper Elementary School.*

## Virginia L. Murray Elementary School (Murray)

Home of the Mustangs



### General Information

- **Address:** 3251 Morgantown Road, Charlottesville, VA 22903
- **Phone:** 434-977-4599
- **Website:** [mes.k12albemarle.org](http://mes.k12albemarle.org)
- **Virginia School Quality Profile:** [schoolquality.virginia.gov/schools/virginia-l-murray-elementary](http://schoolquality.virginia.gov/schools/virginia-l-murray-elementary)

### Facility Information

- **Built:** 1960
- **Size:** 42,057 sq. ft.
- **Site:** 20.9 acres
- **Mobile Classrooms:** 1
- **Feeder Pattern:** Western
- **Pathway:** Murray students move on to Henley Middle School, then Western Albemarle High School.

### Who We Are: A Snapshot

At **Murray Elementary School**, we are dedicated to providing a positive, safe, and inclusive environment where every student can thrive, find joy, and develop a lifelong passion for learning. Our team works collaboratively to build strong, supportive relationships with students, following the principles and practices of Responsive Classroom to create a space where everyone feels valued and engaged. We leverage student agency in decision making to create invitational learning environments. Educators clearly articulate learning intentions and success criteria so that students can be leaders of their own learning.

## Budget Information

Murray ▼

Budget Factors	2023-2024	2024-2025	2025-2026	Projected 2026-27	
Total Enrollment	277	273	257	Total Enrollment	262
Students with Disabilities	8.7%	10.3%	10.9%	Preschool Enrollment	0
English Learners	7.2%	4.4%	1.9%	K-12 Enrollment	262
Economically Disadvantaged	9.4%	11.7%	6.6%	Economically Disadvantaged	8.3%

Expense	23-24 Actuals	24-25 Actuals	25-26 Adopted	26-27 Draft	Increase	Increase %
Salary	\$2,669,044	\$2,767,513	\$2,658,511	\$2,782,706	\$124,195	4.7%
Other Wages	\$80,934	\$136,384	\$94,205	\$137,179	\$42,974	45.6%
Benefits	\$1,100,158	\$1,165,682	\$1,182,520	\$1,263,850	\$81,330	6.9%
Operations	\$75,884	\$76,024	\$72,497	\$67,748	(\$4,749)	-6.6%
<b>Total</b>	<b>\$3,926,020</b>	<b>\$4,145,603</b>	<b>\$4,007,733</b>	<b>\$4,251,483</b>	<b>\$243,750</b>	<b>6.1%</b>

State Category Report	23-24 Actuals	24-25 Actuals	25-26 Adopted	26-27 Draft	Increase	Increase %
Instruction	\$3,592,836	\$3,701,433	\$3,550,117	\$3,792,605	\$242,488	6.8%
Admin/Attend& Health	\$52,554	\$157,494	\$164,198	\$196,781	\$32,583	19.8%
Technology	\$87,611	\$88,619	\$90,790	\$67,724	(\$23,066)	-25.4%
Building Services	\$192,895	\$197,619	\$201,628	\$193,373	(\$8,255)	-4.1%
Transportation	\$124	\$438	\$1,000	\$1,000	\$0	0.0%
<b>Total</b>	<b>\$3,926,020</b>	<b>\$4,145,603</b>	<b>\$4,007,733</b>	<b>\$4,251,483</b>	<b>\$243,750</b>	<b>6.1%</b>

# Red Hill Elementary School

Home of the Moos



## General Information

- **Address:** 3901 Red Hill School Road, North Garden, VA 22959
- **Phone:** 434-293-5332
- **Website:** [rhes.k12albemarle.org](http://rhes.k12albemarle.org)
- **Virginia School Quality Profile:** [schoolquality.virginia.gov/schools/red-hill-elementary](http://schoolquality.virginia.gov/schools/red-hill-elementary)

## Facility Information

- **Built:** 1973
- **Size:** 40,085 sq. ft.
- **Site:** 10.9 acres
- **Mobile Classrooms:** None
- **Feeder Pattern:** Southern
- **Pathway:** Red Hill students move on to Walton Middle School, then Monticello High School.

## Who We Are: A Snapshot

Together, the entire Red Hill community engages the mind and heart of each **Red Hill Elementary School** student to become a lifelong learner with the necessary skills to be a contributing member of our world. Through the development of curiosity, imagination, love of learning, respect for diversity, and intellect, all learners reach their highest potential.

## Budget Information

Red Hill ▼

Budget Factors	2023-2024	2024-2025	2025-2026	Projected 2026-27	
Total Enrollment	196	210	195	Total Enrollment	203
Students with Disabilities	20.4%	21.0%	21.5%	Preschool Enrollment	18
English Learners	7.7%	8.1%	10.8%	K-12 Enrollment	185
Economically Disadvantaged	45.9%	36.2%	35.9%	Economically Disadvantaged	51.3%

Expense	23-24 Actuals	24-25 Actuals	25-26 Adopted	26-27 Draft	Increase	Increase %
Salary	\$1,987,086	\$2,319,908	\$2,206,995	\$2,524,118	\$317,123	14.4%
Other Wages	\$52,334	\$86,003	\$103,510	\$136,932	\$33,422	32.3%
Benefits	\$801,746	\$974,181	\$962,582	\$1,146,290	\$183,708	19.1%
Operations	\$74,162	\$95,183	\$58,437	\$60,010	\$1,573	2.7%
<b>Total</b>	<b>\$2,915,328</b>	<b>\$3,475,274</b>	<b>\$3,331,524</b>	<b>\$3,867,350</b>	<b>\$535,826</b>	<b>16.1%</b>

State Category Report	23-24 Actuals	24-25 Actuals	25-26 Adopted	26-27 Draft	Increase	Increase %
Instruction	\$2,691,670	\$3,127,171	\$2,968,382	\$3,463,576	\$495,194	16.7%
Admin/Attend& Health	\$72,198	\$165,101	\$171,196	\$200,370	\$29,174	17.0%
Technology	\$25,759	\$45,358	\$50,039	\$51,544	\$1,505	3.0%
Building Services	\$125,390	\$136,789	\$141,457	\$151,410	\$9,953	7.0%
Transportation	\$311	\$855	\$450	\$450	\$0	0.0%
<b>Total</b>	<b>\$2,915,328</b>	<b>\$3,475,274</b>	<b>\$3,331,524</b>	<b>\$3,867,350</b>	<b>\$535,826</b>	<b>16.1%</b>

# Scottsville Elementary School

Home of the Tigers



## General Information

- **Address:** 7868 Scottsville Road, Scottsville, VA 24590
- **Phone:** 434-286-2441
- **Website:** [ses.k12albemarle.org](http://ses.k12albemarle.org)
- **Virginia School Quality Profile:** [schoolquality.virginia.gov/schools/scottsville-elementary](http://schoolquality.virginia.gov/schools/scottsville-elementary)

## Facility Information

- **Built:** 1974
- **Size:** 50,097 sq. ft.
- **Site:** 15.0 acres
- **Mobile Classrooms:** None
- **Feeder Pattern:** Southern
- **Pathway:** Scottsville students move on to Walton Middle School, then Monticello High School.

## Who We Are: A Snapshot

**Scottsville Elementary School** is a place where students and staff work together to learn and grow. We teach our students to persist through all challenges, both academic and social-emotional, as a part of the learning process. We want all students to do their personal best every day, which is possible through strong learning partnerships with students, families, and our community.

## Budget Information

Scottsville ▼

Budget Factors	2023-2024	2024-2025	2025-2026	Projected 2026-27	
Total Enrollment	211	216	213	Total Enrollment	205
Students with Disabilities	15.6%	15.7%	15.0%	Preschool Enrollment	0
English Learners	0.9%	2.3%	3.3%	K-12 Enrollment	205
Economically Disadvantaged	46.0%	37.5%	45.1%	Economically Disadvantaged	53.5%

Expense	23-24 Actuals	24-25 Actuals	25-26 Adopted	26-27 Draft	Increase	Increase %
Salary	\$2,192,506	\$2,301,450	\$2,260,841	\$2,436,289	\$175,448	7.8%
Other Wages	\$91,618	\$121,074	\$73,710	\$140,964	\$67,254	91.2%
Benefits	\$855,716	\$950,520	\$1,000,265	\$1,135,788	\$135,523	13.5%
Operations	\$70,308	\$78,718	\$58,929	\$58,135	(\$794)	-1.3%
<b>Total</b>	<b>\$3,210,148</b>	<b>\$3,451,763</b>	<b>\$3,393,745</b>	<b>\$3,771,176</b>	<b>\$377,431</b>	<b>11.1%</b>

State Category Report	23-24 Actuals	24-25 Actuals	25-26 Adopted	26-27 Draft	Increase	Increase %
Instruction	\$2,941,146	\$2,962,674	\$2,926,588	\$3,296,639	\$370,051	12.6%
Admin/Attend& Health	\$71,715	\$219,891	\$226,033	\$219,287	(\$6,746)	-3.0%
Technology	\$39,215	\$56,031	\$59,556	\$61,309	\$1,753	2.9%
Building Services	\$157,981	\$213,103	\$181,568	\$193,941	\$12,373	6.8%
Transportation	\$92	\$64				
<b>Total</b>	<b>\$3,210,148</b>	<b>\$3,451,763</b>	<b>\$3,393,745</b>	<b>\$3,771,176</b>	<b>\$377,431</b>	<b>11.1%</b>

# Stone-Robinson Elementary School

Home of the Eagles



## General Information

- **Address:** 958 North Milton Road Charlottesville, VA 22911
- **Phone:** 434-296-3754
- **Website:** [sres.k12albemarle.org](https://sres.k12albemarle.org)
- **Virginia School Quality Profile:** [schoolquality.virginia.gov/schools/stone-robinson-elementary](https://schoolquality.virginia.gov/schools/stone-robinson-elementary)

## Facility Information

- **Built:** 1961
- **Size:** 71,100 sq. ft.
- **Site:** 11.3 acres
- **Mobile Classrooms:** None
- **Feeder Pattern:** Southern
- **Pathway:** Stone-Robinson students move on to Burley or Walton Middle School, then Monticello High School.

## Who We Are: A Snapshot

At **Stone-Robinson Elementary School**, we believe all students come to us with a natural curiosity and love for learning. We maintain high expectations and provide authentic learning experiences that nurture each child's social, emotional, and academic growth. At the heart of it all, we believe in building strong relationships with our students and community members that promote a positive school climate — one that is safe, kind, and inclusive for all learners.

## Budget Information

Stone-Robinson ▼

Budget Factors	2023-2024	2024-2025	2025-2026	Projected 2026-27	
Total Enrollment	488	476	441	Total Enrollment	456
Students with Disabilities	16.0%	14.9%	16.3%	Preschool Enrollment	36
English Learners	5.1%	6.3%	8.4%	K-12 Enrollment	420
Economically Disadvantaged	29.1%	27.9%	29.3%	Economically Disadvantaged	27.1%

Expense	23-24 Actuals	24-25 Actuals	25-26 Adopted	26-27 Draft	Increase	Increase %
Salary	\$3,877,080	\$4,041,500	\$4,103,413	\$4,247,305	\$143,892	3.5%
Other Wages	\$167,477	\$236,376	\$163,413	\$205,505	\$42,092	25.8%
Benefits	\$1,592,052	\$1,782,763	\$1,885,450	\$2,000,488	\$115,038	6.1%
Operations	\$87,673	\$75,046	\$97,639	\$99,415	\$1,776	1.8%
<b>Total</b>	<b>\$5,724,282</b>	<b>\$6,135,685</b>	<b>\$6,249,915</b>	<b>\$6,552,713</b>	<b>\$302,798</b>	<b>4.8%</b>

State Category Report	23-24 Actuals	24-25 Actuals	25-26 Adopted	26-27 Draft	Increase	Increase %
Instruction	\$5,330,987	\$5,675,309	\$5,778,107	\$6,038,330	\$260,223	4.5%
Admin/Attend& Health	\$61,611	\$150,031	\$157,169	\$180,791	\$23,622	15.0%
Technology	\$117,453	\$122,711	\$122,224	\$126,169	\$3,945	3.2%
Building Services	\$213,868	\$187,609	\$192,115	\$207,023	\$14,908	7.8%
Transportation	\$363	\$25	\$300	\$400	\$100	33.3%
<b>Total</b>	<b>\$5,724,282</b>	<b>\$6,135,685</b>	<b>\$6,249,915</b>	<b>\$6,552,713</b>	<b>\$302,798</b>	<b>4.8%</b>

# Stony Point Elementary School

Home of the Dragons



## General Information

- **Address:** 3893 Stony Point Road, Keswick, VA 22947
- **Phone:** 434-973-6405
- **Website:** [spes.k12albemarle.org](https://spes.k12albemarle.org)
- **Virginia School Quality Profile:** [schoolquality.virginia.gov/schools/stony-point-elementary](https://schoolquality.virginia.gov/schools/stony-point-elementary)

## Facility Information

- **Built:** 1934
- **Size:** 38,500 sq. ft.
- **Site:** 11.6 acres
- **Mobile Classrooms:** 4
- **Feeder Pattern:** Northern and Southern
- **Pathway:** Stony Point students move on to Burley Middle School, then to Monticello High School; or students move to Lakeside Middle School, then Albemarle High School.

## Who We Are: A Snapshot

**Stony Point Elementary School** is a creative community of high-achieving learners who encourage each other to find and explore things about which they are passionate. It is our mission to foster an environment that allows our members to: persevere, overcome challenges, be unafraid to innovate, and believe that there is no limit to what we can accomplish.

## Budget Information

Stony Point ▼

Budget Factors	2023-2024	2024-2025	2025-2026	Projected 2026-27	
Total Enrollment	188	217	252	Total Enrollment	253
Students with Disabilities	14.4%	12.0%	13.1%	Preschool Enrollment	12
English Learners	3.2%	6.9%	7.5%	K-12 Enrollment	241
Economically Disadvantaged	27.1%	24.9%	21.8%	Economically Disadvantaged	23.9%

Expense	23-24 Actuals	24-25 Actuals	25-26 Adopted	26-27 Draft	Increase	Increase %
Salary	\$2,082,645	\$2,386,070	\$2,453,233	\$2,675,086	\$221,853	9.0%
Other Wages	\$89,369	\$124,967	\$99,983	\$128,773	\$28,790	28.8%
Benefits	\$854,370	\$1,046,276	\$1,136,793	\$1,300,677	\$163,884	14.4%
Operations	\$61,751	\$56,206	\$59,850	\$70,434	\$10,584	17.7%
<b>Total</b>	<b>\$3,088,134</b>	<b>\$3,613,519</b>	<b>\$3,749,859</b>	<b>\$4,174,970</b>	<b>\$425,111</b>	<b>11.3%</b>

State Category Report	23-24 Actuals	24-25 Actuals	25-26 Adopted	26-27 Draft	Increase	Increase %
Instruction	\$2,784,320	\$3,260,996	\$3,338,367	\$3,684,260	\$345,893	10.4%
Admin/Attend& Health	\$68,480	\$139,013	\$152,750	\$203,721	\$50,971	33.4%
Technology	\$42,126	\$43,626	\$46,581	\$48,066	\$1,485	3.2%
Building Services	\$193,021	\$168,907	\$212,061	\$238,823	\$26,762	12.6%
Transportation	\$188	\$977	\$100	\$100	\$0	0.0%
<b>Total</b>	<b>\$3,088,134</b>	<b>\$3,613,519</b>	<b>\$3,749,859</b>	<b>\$4,174,970</b>	<b>\$425,111</b>	<b>11.3%</b>

# Woodbrook Elementary School

Home of the Bears



## General Information

- **Address:** 100 Woodbrook Drive, Charlottesville, VA 22901
- **Phone:** 434-973-6600
- **Website:** [wes.k12albemarle.org](http://wes.k12albemarle.org)
- **Virginia School Quality Profile:** [schoolquality.virginia.gov/schools/woodbrook-elementary](http://schoolquality.virginia.gov/schools/woodbrook-elementary)

## Facility Information

- **Built:** 1966
- **Size:** 82,966 sq. ft.
- **Site:** 12.0 acres
- **Mobile Classrooms:** None
- **Feeder Pattern:** Northern
- **Pathway:** Woodbrook students move on to Journey Middle School, then Albemarle High School.

## Who We Are: A Snapshot

Our growing **Woodbrook Elementary School** serves a close-knit community that cares deeply about the success and well-being of every child. We're dedicated to creating a supportive learning environment where students not only grow academically but also develop important social and emotional skills. By using the Responsive Classroom approach, we work together as a team to make sure every child feels valued and supported.

## Budget Information

Woodbrook ▼

Budget Factors	2023-2024	2024-2025	2025-2026	Projected 2026-27	
Total Enrollment	525	522	542	Total Enrollment	532
Students with Disabilities	10.7%	12.3%	12.4%	Preschool Enrollment	32
English Learners	33.0%	34.3%	35.4%	K-12 Enrollment	500
Economically Disadvantaged	55.0%	55.9%	60.1%	Economically Disadvantaged	70.2%

Expense	23-24 Actuals	24-25 Actuals	25-26 Adopted	26-27 Draft	Increase	Increase %
Salary	\$5,178,760	\$5,065,633	\$5,262,973	\$5,815,243	\$552,270	10.5%
Other Wages	\$179,691	\$194,527	\$200,624	\$292,824	\$92,200	46.0%
Benefits	\$2,039,504	\$2,095,391	\$2,440,042	\$2,694,952	\$254,910	10.4%
Operations	\$126,375	\$91,830	\$112,002	\$121,384	\$9,382	8.4%
<b>Total</b>	<b>\$7,524,330</b>	<b>\$7,447,380</b>	<b>\$8,015,641</b>	<b>\$8,924,403</b>	<b>\$908,762</b>	<b>11.3%</b>

State Category Report	23-24 Actuals	24-25 Actuals	25-26 Adopted	26-27 Draft	Increase	Increase %
Instruction	\$6,990,815	\$6,773,786	\$7,333,241	\$8,193,827	\$860,586	11.7%
Admin/Attend& Health	\$70,809	\$218,868	\$277,457	\$312,295	\$34,838	12.6%
Technology	\$97,471	\$85,596	\$111,192	\$117,406	\$6,214	5.6%
Building Services	\$365,088	\$368,512	\$293,751	\$300,875	\$7,124	2.4%
Transportation	\$148	\$619				
<b>Total</b>	<b>\$7,524,330</b>	<b>\$7,447,380</b>	<b>\$8,015,641</b>	<b>\$8,924,403</b>	<b>\$908,762</b>	<b>11.3%</b>



---

## MIDDLE SCHOOLS

---

Albemarle County Public Schools (ACPS) operates five comprehensive middle schools serving students in grades 6-8, as well as the middle school program at Community Lab School. The following school profiles include contact information, facility details, feeder pattern pathways, and a brief introduction to each school. Additionally, student enrollment and school expenditure data provide historical context and projections for the upcoming school year.

**Comprehensive Middle Schools in ACPS:**

- Jackson P. Burley (Burley)
- Joseph T. Henley (Henley)
- Journey
- Lakeside
- Leslie H. Walton (Walton)

## Jackson P. Burley Middle School (Burley)

Home of the Bears



### General Information

- **Address:** 901 Rose Hill Drive, Charlottesville, VA 22903
- **Phone:** 434-295-5101
- **Website:** [bms.k12albemarle.org](http://bms.k12albemarle.org)
- **Virginia School Quality Profile:** [schoolquality.virginia.gov/schools/jackson-p-burley-middle](http://schoolquality.virginia.gov/schools/jackson-p-burley-middle)

### Facility Information

- **Built:** 1951
- **Size:** 123,626 sq. ft.
- **Site:** 15.3 acres
- **Mobile Classrooms:** None
- **Feeder Pattern:** Northern and Southern
- **Pathway:** Burley students previously attended Agnor, Mountain View Upper, Stone-Robinson, or Stony Point Elementary School and will move on to Albemarle or Monticello High School.

### Who We Are: A Snapshot

**Jackson P. Burley Middle School**, continuing to build on its historic legacy of integrity and achievement, seeks to cultivate educational partnerships that engage students, staff, families, and the community in the pursuit of positive academic outcomes for all students. Jackson P. Burley Middle School's core values of "Character, Scholarship, and Service," remain the driving force behind all that we do and our school's continued connection to the historic legacy of Jackson P. Burley High School.

## Budget Information

Burley ▼

Budget Factors	2023-2024	2024-2025	2025-2026	Projected 2026-27	
Total Enrollment	552	535	509	Total Enrollment	520
Students with Disabilities	14.3%	15.7%	17.9%	Preschool Enrollment	
English Learners	19.4%	20.6%	13.8%	K-12 Enrollment	520
Economically Disadvantaged	45.5%	37.2%	34.6%	Economically Disadvantaged	42.7%

Expense	23-24 Actuals	24-25 Actuals	25-26 Adopted	26-27 Draft	Increase	Increase %
Salary	\$4,666,383	\$4,728,802	\$4,843,437	\$4,887,074	\$43,637	0.9%
Other Wages	\$143,634	\$194,715	\$222,272	\$297,588	\$75,316	33.9%
Benefits	\$1,865,185	\$1,964,737	\$2,210,239	\$2,243,125	\$32,886	1.5%
Operations	\$159,357	\$156,184	\$155,775	\$160,925	\$5,150	3.3%
<b>Total</b>	<b>\$6,834,559</b>	<b>\$7,044,438</b>	<b>\$7,431,723</b>	<b>\$7,588,712</b>	<b>\$156,989</b>	<b>2.1%</b>

State Category Report	23-24 Actuals	24-25 Actuals	25-26 Adopted	26-27 Draft	Increase	Increase %
Instruction	\$6,367,617	\$6,513,926	\$6,740,492	\$6,890,828	\$150,336	2.2%
Admin/Attend& Health	\$77,101	\$119,144	\$163,954	\$191,824	\$27,870	17.0%
Technology	\$115,354	\$93,322	\$137,176	\$107,433	(\$29,743)	-21.7%
Building Services	\$274,165	\$317,857	\$389,851	\$398,377	\$8,526	2.2%
Transportation	\$321	\$189	\$250	\$250	\$0	0.0%
<b>Total</b>	<b>\$6,834,559</b>	<b>\$7,044,438</b>	<b>\$7,431,723</b>	<b>\$7,588,712</b>	<b>\$156,989</b>	<b>2.1%</b>

## Joseph T. Henley Middle School (Henley)

Home of the Hornets



### General Information

- **Address:** 5880 Rockfish Gap Turnpike, Crozet, VA 22932
- **Phone:** 434-823-4393
- **Website:** [hms.k12albemarle.org](https://hms.k12albemarle.org)
- **Virginia School Quality Profile:** [schoolquality.virginia.gov/schools/joseph-t-henley-middle](https://schoolquality.virginia.gov/schools/joseph-t-henley-middle)

### Facility Information

- **Built:** 1966
- **Size:** 120,419 sq. ft.
- **Site:** 30.0 acres
- **Mobile Classrooms:** 1
- **Feeder Pattern:** Western
- **Pathway:** Henley students previously attended Brownsville, Crozet, Ivy, or Murray Elementary School and will move on to Western Albemarle High School.

### Who We Are: A Snapshot

**Henley Middle School** is deeply committed to ACPS's strategic plan, *Learning for All*, and we continue to evaluate our curriculum, assessment, and instruction through these lenses. We seek to equip all students with the broad range of skills and competencies that will prepare them for high school, college, and the workforce.

## Budget Information

Henley ▼

Budget Factors	2023-2024	2024-2025	2025-2026	Projected 2026-27	
Total Enrollment	804	847	872	Total Enrollment	869
Students with Disabilities	12.8%	12.4%	11.6%	Preschool Enrollment	
English Learners	3.2%	3.3%	1.5%	K-12 Enrollment	869
Economically Disadvantaged	13.9%	12.9%	10.1%	Economically Disadvantaged	12.3%

Expense	23-24 Actuals	24-25 Actuals	25-26 Adopted	26-27 Draft	Increase	Increase %
Salary	\$5,639,880	\$6,030,402	\$6,329,656	\$6,536,954	\$207,298	3.3%
Other Wages	\$225,827	\$312,153	\$267,797	\$353,379	\$85,582	32.0%
Benefits	\$2,306,568	\$2,533,602	\$2,891,264	\$3,039,628	\$148,364	5.1%
Operations	\$173,499	\$172,225	\$212,308	\$232,855	\$20,547	9.7%
<b>Total</b>	<b>\$8,345,774</b>	<b>\$9,048,382</b>	<b>\$9,701,025</b>	<b>\$10,162,816</b>	<b>\$461,791</b>	<b>4.8%</b>

State Category Report	23-24 Actuals	24-25 Actuals	25-26 Adopted	26-27 Draft	Increase	Increase %
Instruction	\$7,706,546	\$8,345,631	\$8,818,394	\$9,156,626	\$338,232	3.8%
Admin/Attend& Health	\$57,900	\$146,749	\$145,422	\$200,557	\$55,135	37.9%
Technology	\$173,751	\$182,338	\$193,238	\$202,354	\$9,116	4.7%
Building Services	\$406,906	\$373,484	\$543,971	\$603,079	\$59,108	10.9%
Transportation	\$671	\$181		\$200	\$200	
<b>Total</b>	<b>\$8,345,774</b>	<b>\$9,048,382</b>	<b>\$9,701,025</b>	<b>\$10,162,816</b>	<b>\$461,791</b>	<b>4.8%</b>

# Journey Middle School

Home of the Jaguars



## General Information

- **Address:** 210 Lambs Lane, Charlottesville, VA 22901
- **Phone:** 434-975-9320
- **Website:** [jms.k12albemarle.org](http://jms.k12albemarle.org)
- **Virginia School Quality Profile:** [schoolquality.virginia.gov/schools/journey-middle](http://schoolquality.virginia.gov/schools/journey-middle)

## Facility Information

- **Built:** 1966
- **Size:** 94,929 sq. ft.
- **Site:** 20.0 acres
- **Mobile Classrooms:** None
- **Feeder Pattern:** Northern
- **Pathway:** Journey students previously attended Agnor, Broadus Wood, Greer, or Woodbrook Elementary School and will move on to Albemarle High School.

## Who We Are: A Snapshot

**Journey Middle School** emphasizes college and career readiness for all. Our students drive their own learning in a culturally responsive environment through advocacy, self-reflection, and a growth mindset to obtain their short-term and long-term goals. Journey's core values include compassion, connection, equity, growth, and healthy risk-taking.

## Budget Information

Journey ▼

Budget Factors	2023-2024	2024-2025	2025-2026	Projected 2026-27	
Total Enrollment	608	647	643	Total Enrollment	657
Students with Disabilities	14.0%	14.5%	15.4%	Preschool Enrollment	
English Learners	28.5%	32.3%	22.7%	K-12 Enrollment	657
Economically Disadvantaged	48.8%	45.0%	45.4%	Economically Disadvantaged	54.7%

Expense	23-24 Actuals	24-25 Actuals	25-26 Adopted	26-27 Draft	Increase	Increase %
Salary	\$5,239,910	\$5,746,382	\$6,163,069	\$6,359,613	\$196,544	3.2%
Other Wages	\$209,291	\$328,903	\$284,277	\$372,994	\$88,717	31.2%
Benefits	\$2,152,100	\$2,387,649	\$2,778,942	\$2,917,112	\$138,170	5.0%
Operations	\$212,024	\$145,535	\$173,845	\$176,965	\$3,120	1.8%
<b>Total</b>	<b>\$7,813,324</b>	<b>\$8,608,469</b>	<b>\$9,400,133</b>	<b>\$9,826,684</b>	<b>\$426,551</b>	<b>4.5%</b>

State Category Report	23-24 Actuals	24-25 Actuals	25-26 Adopted	26-27 Draft	Increase	Increase %
Instruction	\$7,287,886	\$7,983,090	\$8,594,171	\$8,983,649	\$389,478	4.5%
Admin/Attend& Health	\$64,583	\$160,706	\$257,224	\$291,972	\$34,748	13.5%
Technology	\$163,348	\$149,495	\$147,748	\$140,061	(\$7,687)	-5.2%
Building Services	\$296,679	\$314,428	\$400,790	\$410,602	\$9,812	2.4%
Transportation	\$828	\$751	\$200	\$400	\$200	100.0%
<b>Total</b>	<b>\$7,813,324</b>	<b>\$8,608,469</b>	<b>\$9,400,133</b>	<b>\$9,826,684</b>	<b>\$426,551</b>	<b>4.5%</b>

# Lakeside Middle School

Home of the Sharks



## General Information

- **Address:** 2801 Powell Creek Drive, Charlottesville, VA 22911
- **Phone:** 434-975-0599
- **Website:** [lakeside.k12albemarle.org](http://lakeside.k12albemarle.org)
- **Virginia School Quality Profile:** [schoolquality.virginia.gov/schools/lakeside-middle](http://schoolquality.virginia.gov/schools/lakeside-middle)

## Facility Information

- **Built:** 1994
- **Size:** 94,440 sq. ft.
- **Site:** 21.0 acres
- **Mobile Classrooms:** None
- **Feeder Pattern:** Northern
- **Pathway:** Lakeside students previously attended Baker-Butler, Hollymead, or Stony Point Elementary School and will move on to Albemarle High School.

## Who We Are: A Snapshot

**Lakeside Middle School** believes that fostering creativity and striving for excellence today prepares students to succeed in the changing and challenging world tomorrow. We are committed to providing our students with high-quality learning experiences that are relevant and meaningful, and we firmly believe that supporting students' social and emotional well-being is an integral part of the middle school experience.

## Budget Information

Lakeside ▼

Budget Factors	2023-2024	2024-2025	2025-2026	Projected 2026-27	
Total Enrollment	520	574	599	Total Enrollment	616
Students with Disabilities	11.0%	13.2%	13.2%	Preschool Enrollment	
English Learners	11.2%	12.7%	6.3%	K-12 Enrollment	616
Economically Disadvantaged	23.8%	25.3%	20.4%	Economically Disadvantaged	23.0%

Expense	23-24 Actuals	24-25 Actuals	25-26 Adopted	26-27 Draft	Increase	Increase %
Salary	\$4,212,218	\$4,474,416	\$4,704,565	\$4,876,479	\$171,914	3.7%
Other Wages	\$129,525	\$189,555	\$177,522	\$293,759	\$116,237	65.5%
Benefits	\$1,693,981	\$1,859,407	\$2,126,422	\$2,264,461	\$138,039	6.5%
Operations	\$147,952	\$118,254	\$167,524	\$175,526	\$8,002	4.8%
<b>Total</b>	<b>\$6,183,676</b>	<b>\$6,641,631</b>	<b>\$7,176,033</b>	<b>\$7,610,225</b>	<b>\$434,192</b>	<b>6.1%</b>

State Category Report	23-24 Actuals	24-25 Actuals	25-26 Adopted	26-27 Draft	Increase	Increase %
Instruction	\$5,716,814	\$6,072,378	\$6,565,026	\$6,929,793	\$364,767	5.6%
Admin/Attend& Health	\$83,989	\$176,558	\$185,004	\$198,520	\$13,516	7.3%
Technology	\$119,141	\$114,719	\$114,153	\$139,622	\$25,469	22.3%
Building Services	\$263,301	\$276,793	\$311,850	\$341,290	\$29,440	9.4%
Transportation	\$430	\$1,182		\$1,000	\$1,000	
<b>Total</b>	<b>\$6,183,676</b>	<b>\$6,641,631</b>	<b>\$7,176,033</b>	<b>\$7,610,225</b>	<b>\$434,192</b>	<b>6.1%</b>

## Leslie H. Walton Middle School (Walton)

Home of the Wildcats



### General Information

- **Address:** 4217 Red Hill Road, Charlottesville, VA 22903
- **Phone:** 434-977-5615
- **Website:** [wms.k12albemarle.org](http://wms.k12albemarle.org)
- **Virginia School Quality Profile:** [schoolquality.virginia.gov/schools/leslie-h-walton-middle](http://schoolquality.virginia.gov/schools/leslie-h-walton-middle)

### Facility Information

- **Built:** 1974
- **Size:** 98,340 sq. ft.
- **Site:** 50.0 acres
- **Mobile Classrooms:** None
- **Feeder Pattern:** Southern
- **Pathway:** Walton students previously attended Mountain View Upper, Red Hill, Scottsville, or Stone-Robinson Elementary School and will move on to Monticello High School.

### Who We Are: A Snapshot

At **Walton Middle School**, our work is centered around three Guiding Principles, which include fostering a community of safe, responsible and respectful learners that help each other grow academically, emotionally and socially; being welcoming, inclusive and student-centered to ensure that the doors of opportunity are open for all students; and working as a team to foster healthy risk-taking, encourage pursuit of passions, and cultivate a growth mindset with a focus on continuous improvement.

## Budget Information

Walton ▼

Budget Factors	2023-2024	2024-2025	2025-2026	Projected 2026-27	
Total Enrollment	329	339	364	Total Enrollment	347
Students with Disabilities	18.8%	19.8%	20.3%	Preschool Enrollment	
English Learners	6.7%	6.5%	3.3%	K-12 Enrollment	347
Economically Disadvantaged	38.6%	32.7%	31.3%	Economically Disadvantaged	39.1%

Expense	23-24 Actuals	24-25 Actuals	25-26 Adopted	26-27 Draft	Increase	Increase %
Salary	\$3,794,472	\$3,774,446	\$3,981,168	\$4,104,329	\$123,161	3.1%
Other Wages	\$181,982	\$253,808	\$151,053	\$232,504	\$81,451	53.9%
Benefits	\$1,558,681	\$1,580,550	\$1,790,501	\$1,871,042	\$80,541	4.5%
Operations	\$118,960	\$114,989	\$116,648	\$119,148	\$2,500	2.1%
<b>Total</b>	<b>\$5,654,094</b>	<b>\$5,723,794</b>	<b>\$6,039,370</b>	<b>\$6,327,023</b>	<b>\$287,653</b>	<b>4.8%</b>

State Category Report	23-24 Actuals	24-25 Actuals	25-26 Adopted	26-27 Draft	Increase	Increase %
Instruction	\$5,197,847	\$5,189,523	\$5,459,490	\$5,601,104	\$141,614	2.6%
Admin/Attend& Health	\$80,774	\$226,921	\$177,981	\$236,931	\$58,950	33.1%
Technology	\$101,133	\$74,926	\$68,360	\$130,214	\$61,854	90.5%
Building Services	\$273,699	\$232,336	\$332,890	\$358,474	\$25,584	7.7%
Transportation	\$640	\$88	\$649	\$300	(\$349)	-53.8%
<b>Total</b>	<b>\$5,654,094</b>	<b>\$5,723,794</b>	<b>\$6,039,370</b>	<b>\$6,327,023</b>	<b>\$287,653</b>	<b>4.8%</b>



---

## HIGH SCHOOLS

---

Albemarle County Public Schools (ACPS) offers a comprehensive high school experience through three base high schools, along with the high school program at Community Lab School. The following school profiles include contact information, facility details, student pathways, and a brief introduction to each school. Additionally, student enrollment and school expenditure data provide historical context and projections for the upcoming school year.

**Comprehensive High Schools in ACPS:**

- Albemarle (AHS)
- Monticello (MoHS)
- Western Albemarle (WAHS)

## Albemarle High School (AHS)

Home of the Patriots



### General Information

- **Address:** 2775 Hydraulic Road, Charlottesville, VA 22901
- **Phone:** 434-975-9300
- **Website:** [ahs.k12albemarle.org](https://ahs.k12albemarle.org)
- **Virginia School Quality Profile:** [schoolquality.virginia.gov/schools/albemarle-high](https://schoolquality.virginia.gov/schools/albemarle-high)

### Facility Information

- **Built:** 1953
- **Size:** 350,103 sq. ft.
- **Site:** 40.0 acres
- **Mobile Classrooms:** 2
- **Feeder Pattern:** Northern
- **Pathway:** Albemarle High School is the base high school for students in the Northern Feeder Pattern.

### Who We Are: A Snapshot

**Albemarle High School** has a passion and willingness to meet the needs of our students by providing a viable curriculum, rich learning experiences and meaningful content. It is our earnest expectation to build trust, ignite enthusiasm, and to partner with our students, families, and community to promulgate the goals for our division. By demonstrating our own lifelong learning, the faculty and staff of AHS seeks to be open and responsive to all walks of life by providing a culturally inclusive learning environment as we strive to be the premier high school in Virginia.

**Scholars Studios:** Encore, Vivid ([k12albemarle.org/studios](https://k12albemarle.org/studios))

## Budget Information

Albemarle ▼

Budget Factors	2023-2024	2024-2025	2025-2026	Projected 2026-27	
Total Enrollment	2013	1971	1905	Total Enrollment	1848
Students with Disabilities	11.0%	11.9%	12.3%	Preschool Enrollment	
English Learners	14.2%	15.8%	15.8%	K-12 Enrollment	1848
Economically Disadvantaged	33.4%	29.7%	30.2%	Economically Disadvantaged	34.3%

Expense	23-24 Actuals	24-25 Actuals	25-26 Adopted	26-27 Draft	Increase	Increase %
Salary	\$14,417,495	\$14,886,260	\$15,246,405	\$14,125,815	(\$1,120,590)	-7.3%
Other Wages	\$1,022,860	\$1,299,335	\$1,119,269	\$1,067,578	(\$51,691)	-4.6%
Benefits	\$5,754,019	\$6,129,570	\$6,880,548	\$6,398,037	(\$482,511)	-7.0%
Operations	\$916,599	\$738,106	\$892,752	\$998,407	\$105,655	11.8%
<b>Total</b>	<b>\$22,110,973</b>	<b>\$23,053,271</b>	<b>\$24,138,974</b>	<b>\$22,589,837</b>	<b>(\$1,549,137)</b>	<b>-6.4%</b>

State Category Report	23-24 Actuals	24-25 Actuals	25-26 Adopted	26-27 Draft	Increase	Increase %
Instruction	\$20,794,019	\$21,323,010	\$22,255,439	\$20,518,764	(\$1,736,675)	-7.8%
Admin/Attend& Health	\$162,146	\$520,499	\$538,902	\$551,904	\$13,002	2.4%
Technology	\$271,795	\$314,032	\$319,049	\$329,474	\$10,425	3.3%
Building Services	\$883,014	\$895,731	\$1,025,584	\$1,189,695	\$164,111	16.0%
<b>Total</b>	<b>\$22,110,973</b>	<b>\$23,053,271</b>	<b>\$24,138,974</b>	<b>\$22,589,837</b>	<b>(\$1,549,137)</b>	<b>-6.4%</b>

## Monticello High School (MoHS)

Home of the Mustangs



### General Information

- **Address:** 1400 Independence Way, Charlottesville, VA 22902
- **Phone:** 434-244-3100
- **Website:** [mohs.k12albemarle.org](http://mohs.k12albemarle.org)
- **Virginia School Quality Profile:** [schoolquality.virginia.gov/schools/monticello-high](http://schoolquality.virginia.gov/schools/monticello-high)

### Facility Information

- **Built:** 1998
- **Size:** 249,195 sq. ft.
- **Site:** 70.0 acres
- **Mobile Classrooms:** 1
- **Feeder Pattern:** Southern
- **Pathway:** Monticello High School is the base high school for students in the Southern Feeder Pattern.

### Who We Are: A Snapshot

**Monticello High School** has always had and continues to have a proud tradition of academics, fine arts, athletics, and extracurricular events. We strive for equity and diversity in our practices and outcomes. In addition to equity, we value family and community partnerships, excellence, and wellness in all our students and staff.

**Scholars Studios:** Encore, Vivid ([k12albemarle.org/studios](http://k12albemarle.org/studios))

## Budget Information

Monticello ▼

Budget Factors	2023-2024	2024-2025	2025-2026	Projected 2026-27	
Total Enrollment	1206	1189	1148	Total Enrollment	1133
Students with Disabilities	15.5%	16.1%	17.2%	Preschool Enrollment	
English Learners	7.7%	8.0%	7.8%	K-12 Enrollment	1133
Economically Disadvantaged	36.1%	31.4%	29.7%	Economically Disadvantaged	30.0%

Expense	23-24 Actuals	24-25 Actuals	25-26 Adopted	26-27 Draft	Increase	Increase %
Salary	\$9,871,560	\$9,959,357	\$10,160,417	\$9,890,371	(\$270,046)	-2.7%
Other Wages	\$669,588	\$964,173	\$741,808	\$825,172	\$83,364	11.2%
Benefits	\$3,946,985	\$4,148,753	\$4,593,132	\$4,536,173	(\$56,959)	-1.2%
Operations	\$668,785	\$547,786	\$607,663	\$604,691	(\$2,972)	-0.5%
<b>Total</b>	<b>\$15,156,919</b>	<b>\$15,620,069</b>	<b>\$16,103,020</b>	<b>\$15,856,407</b>	<b>(\$246,613)</b>	<b>-1.5%</b>

State Category Report	23-24 Actuals	24-25 Actuals	25-26 Adopted	26-27 Draft	Increase	Increase %
Instruction	\$14,215,576	\$14,445,774	\$14,752,769	\$14,357,820	(\$394,949)	-2.7%
Admin/Attend& Health	\$83,777	\$207,094	\$269,442	\$300,132	\$30,690	11.4%
Technology	\$183,712	\$204,003	\$197,525	\$175,006	(\$22,519)	-11.4%
Building Services	\$673,855	\$763,198	\$883,284	\$1,023,449	\$140,165	15.9%
<b>Total</b>	<b>\$15,156,919</b>	<b>\$15,620,069</b>	<b>\$16,103,020</b>	<b>\$15,856,407</b>	<b>(\$246,613)</b>	<b>-1.5%</b>

## Western Albemarle High School (WAHS)

Home of the Warriors



### General Information

- **Address:** 5941 Rockfish Gap Turnpike, Crozet, VA 22932
- **Phone:** 434-823-8700
- **Website:** [wahs.k12albemarle.org](http://wahs.k12albemarle.org)
- **Virginia School Quality Profile:** [schoolquality.virginia.gov/schools/western-albemarle-high](http://schoolquality.virginia.gov/schools/western-albemarle-high)

### Facility Information

- **Built:** 1977
- **Size:** 204,041 sq. ft.
- **Site:** 75.0 acres
- **Mobile Classrooms:** 1
- **Feeder Pattern:** Western
- **Pathway:** Western Albemarle High School is the base high school for students in the Western Feeder Pattern.

### Who We Are: A Snapshot

**Western Albemarle High School** enjoys a tradition of student success in academics, athletics, and the arts that is a result of a culture of high expectations and supported by the establishment of strong relationships with students and families. Our school community works together to strengthen learning partnerships and expand our support of both academic and social-emotional learning.

**Scholars Studios:** Encore, Vivid, Terra ([k12albemarle.org/studios](http://k12albemarle.org/studios))

## Budget Information

Western Albemarle ▼

Budget Factors	2023-2024	2024-2025	2025-2026	Projected 2026-27	
Total Enrollment	1164	1273	1306	Total Enrollment	1317
Students with Disabilities	11.1%	11.3%	11.9%	Preschool Enrollment	
English Learners	1.3%	2.3%	1.3%	K-12 Enrollment	1317
Economically Disadvantaged	12.7%	11.9%	10.6%	Economically Disadvantaged	12.3%

Expense	23-24 Actuals	24-25 Actuals	25-26 Adopted	26-27 Draft	Increase	Increase %
Salary	\$8,711,490	\$9,084,625	\$9,597,082	\$9,840,376	\$243,294	2.5%
Other Wages	\$468,581	\$894,568	\$683,783	\$838,140	\$154,357	22.6%
Benefits	\$3,428,314	\$3,709,265	\$4,381,898	\$4,505,734	\$123,836	2.8%
Operations	\$752,017	\$684,501	\$816,935	\$822,992	\$6,057	0.7%
<b>Total</b>	<b>\$13,360,402</b>	<b>\$14,372,959</b>	<b>\$15,479,698</b>	<b>\$16,007,242</b>	<b>\$527,544</b>	<b>3.4%</b>

State Category Report	23-24 Actuals	24-25 Actuals	25-26 Adopted	26-27 Draft	Increase	Increase %
Instruction	\$12,434,546	\$13,224,123	\$14,173,233	\$14,557,630	\$384,397	2.7%
Admin/Attend& Health	\$57,593	\$261,153	\$273,921	\$310,928	\$37,007	13.5%
Technology	\$191,908	\$206,568	\$202,416	\$215,281	\$12,865	6.4%
Building Services	\$676,355	\$681,113	\$830,128	\$923,403	\$93,275	11.2%
<b>Total</b>	<b>\$13,360,402</b>	<b>\$14,372,959</b>	<b>\$15,479,698</b>	<b>\$16,007,242</b>	<b>\$527,544</b>	<b>3.4%</b>



---

## CHARTER SCHOOL, CENTERS & PROGRAMS

---

In addition to traditional schools, Albemarle County Public Schools (ACPS) offers specialized learning environments through its charter school, specialty centers, and alternative education programs. These programs serve students with diverse academic, career, and support needs, providing tailored educational experiences focusing on innovation, intervention, specialized instruction, and post-secondary transitions.

The following profiles include program details, facility information, and a brief overview of each school or center. Additionally, student enrollment and school expenditure data provide historical context and projections for the upcoming school year.

### **Charter School, Specialty Centers & Programs in ACPS:**

- Community Lab School (CLS)
- Albemarle Career Exploration (ACE) Academy — Seminole Place Campus (formerly Center I)
- Albemarle Career Exploration (ACE) Academy — Lambs Lane Campus
- Center for Learning and Growth
- Specialized Academic Center (SAC)
- Other Multi-School Services

## Community Lab School (CLS)

Charter school serving grades 6-12



### General Information

- **Address:** 1200 Forest Street, Charlottesville, VA 22903
- **Phone:** 434-296-3090
- **Website:** [cls.k12albemarle.org](http://cls.k12albemarle.org)
- **Virginia School Quality Profile:** [schoolquality.virginia.gov/schools/community-lab-school](http://schoolquality.virginia.gov/schools/community-lab-school)

### Facility Information

- **Built:** 1959
- **Size:** 30,915 sq. ft.
- **Site:** 7.1 acres
- **Mobile Classrooms:** 4
- **Enrollment & Admissions:** As the division's only charter school, Community Lab School serves middle and high school students from all three feeder patterns through an admissions process. It was formed in 2020 through the merger of Murray High School (est. 1988) and the Community Public Charter School (est. 2008), which served middle school students.

### Who We Are: A Snapshot

**Community Lab School** pioneers innovative approaches to teaching and learning, such as interdisciplinary project-based learning organized into three multi-age clusters: grades 6-8, 9-10, and culminating with the IB Diploma Programme in grades 11-12. The school emphasizes mastery over traditional grading, using standards-based assessment to support deep understanding and meaningful learning. CLS partners with University of Virginia researchers to design, study, and refine its approach. Students are admitted through a random lottery, ensuring access to all ACPS families.

## Budget Information

Community Lab School ▼

Budget Factors	2023-2024	2024-2025	2025-2026	Projected 2026-27	
Total Enrollment	179	177	181	Total Enrollment	192
Students with Disabilities	15.1%	15.8%	18.2%	Preschool Enrollment	
English Learners	2.2%	0.0%	0.0%	K-12 Enrollment	192
Economically Disadvantaged	5.6%	4.5%	4.4%	Economically Disadvantaged	

Expense	23-24 Actuals	24-25 Actuals	25-26 Adopted	26-27 Draft	Increase	Increase %
Salary	\$2,055,135	\$2,257,933	\$2,258,195	\$2,338,410	\$80,215	3.6%
Other Wages	\$39,799	\$58,910	\$91,205	\$117,264	\$26,059	28.6%
Benefits	\$830,662	\$891,383	\$1,014,620	\$1,043,161	\$28,541	2.8%
Operations	\$113,035	\$122,506	\$89,306	\$107,532	\$18,226	20.4%
<b>Total</b>	<b>\$3,038,631</b>	<b>\$3,330,731</b>	<b>\$3,453,326</b>	<b>\$3,606,367</b>	<b>\$153,041</b>	<b>4.4%</b>

State Category Report	23-24 Actuals	24-25 Actuals	25-26 Adopted	26-27 Draft	Increase	Increase %
Instruction	\$2,820,928	\$3,041,502	\$3,053,275	\$3,189,385	\$136,110	4.5%
Admin/Attend& Health	\$67,902	\$107,896	\$177,384	\$200,221	\$22,837	12.9%
Technology	\$26,875	\$48,993	\$32,972	\$26,857	(\$6,115)	-18.5%
Building Services	\$122,925	\$132,340	\$189,695	\$189,904	\$209	0.1%
<b>Total</b>	<b>\$3,038,631</b>	<b>\$3,330,731</b>	<b>\$3,453,326</b>	<b>\$3,606,367</b>	<b>\$153,041</b>	<b>4.4%</b>

# Albemarle Career Exploration (ACE) Academy – Seminole Place Campus

High school specialty center serving grades 9-12



## General Information

- **Address:** 1180 Seminole Trail, Suite 225, Charlottesville, VA 22901
- **Phone:** 434-244-8900
- **Website:** [aces.k12albemarle.org](http://aces.k12albemarle.org)

## Facility Information

- **Opened:** 2018
- **Size:** 42,274 sq. ft. (includes ACE Seminole and office space for multiple departments)
- **Site:** Leased space in the Seminole Place complex
- **Enrollment & Admissions:** ACE Academy – Seminole Place Campus is open to high school students from all three feeder patterns. **Link Studio** students attend ACE Seminole every other day while continuing to attend their base high school on opposite days. Students enroll by selecting Link Studio during the course registration process; no application process is required.

## Who We Are: A Snapshot

**ACE Academy – Seminole Place Campus (ACE Seminole)** is an Albemarle County Public Schools specialty center for students in grades 9-12. ACE Seminole offers coursework for students interested in Cybersecurity, Game Design, or Digital Entertainment that is not offered at any of our comprehensive high schools. Designed to support students in exploring their passions and interests, ACE Seminole provides an educational journey guiding students from foundational coursework to advanced capstone projects and industry certifications. With a focus on passion-driven, problem-solving, and project-based learning, ACE Seminole seamlessly integrates elective and academic coursework to ensure students find purpose and relevance in their studies.

## Budget Information

	2024-2025 <i>Actual</i>	2025-2026 <i>Actual</i>	2026-2027 <i>Projected</i>	2027-2028 <i>Projected</i>	2028-2029 <i>Projected</i>
Daily Enrollment	72	76	83	103	120
Total Students (every other day)	144	152	166	206	240

ACE Academy Seminole PI ▼

Expense	23-24 Actuals	24-25 Actuals	25-26 Adopted	26-27 Draft	Increase	Increase %
Salary	\$865,238	\$913,619	\$903,308	\$1,119,987	\$216,679	24.0%
Other Wages	\$23,174	\$36,150	\$57,005	\$65,174	\$8,169	14.3%
Benefits	\$344,658	\$378,239	\$397,206	\$477,958	\$80,752	20.3%
Operations	\$712,466	\$716,085	\$74,135	\$77,648	\$3,513	4.7%
<b>Total</b>	<b>\$1,945,536</b>	<b>\$2,044,093</b>	<b>\$1,431,654</b>	<b>\$1,740,767</b>	<b>\$309,113</b>	<b>21.6%</b>

State Category Report	23-24 Actuals	24-25 Actuals	25-26 Adopted	26-27 Draft	Increase	Increase %
Instruction	\$1,189,796	\$1,314,169	\$1,310,005	\$1,611,973	\$301,968	23.1%
Admin/Attend&Health	\$54,565	\$67,298	\$53,106	\$37,613	(\$15,493)	-29.2%
Building Services	\$701,174	\$662,626	\$68,543	\$91,181	\$22,638	33.0%
<b>Total</b>	<b>\$1,945,536</b>	<b>\$2,044,093</b>	<b>\$1,431,654</b>	<b>\$1,740,767</b>	<b>\$309,113</b>	<b>21.6%</b>

# Albemarle Career Exploration (ACE) Academy – Lambs Lane Campus

High school specialty center serving grades 9-12

## General Information

- **Address:** 2765 Hydraulic Road, Charlottesville, VA 22901
- **Website:** [k12albemarle.org/studios](http://k12albemarle.org/studios)

## Facility Information

- **Built:** 2026
- **Size:** 63,255 sq. ft.
- **Site:** 11.73
- **Enrollment & Admissions:** ACE Academy – Lambs Lane Campus is open to high school students from all three feeder patterns. **Blueprint, Impact, Nexus, Pulse, Savor, Solve, Thrive, and Venture Studio** students attend ACE Lambs Lane every other day while continuing to attend their base high school on opposite days. Students enroll by selecting one of the listed Studios during the course registration process; no application process is required.

## Who We Are: A Snapshot

**ACE Academy – Lambs Lane Campus (ACE Lambs Lane)** is a specialty center for students in grades 9–12, designed to empower students through personalized, student-driven plans of study aligned to their interests, talents, and future goals. Grounded in the Scholars instructional vision, ACE Lambs Lane partners with students and families to co-construct a four-year academic and elective pathway that builds autonomy, purpose, and relevance in learning. Students learn within a diverse, inclusive community of peers, educators, mentors, and industry experts where they feel welcomed, known, and intellectually challenged, while engaging in meaningful, interest-aligned work. Through authentic, real-world learning experiences — including field experiences, internships, service learning, and industry-connected projects — students develop in-demand skills, higher-order thinking, and professional habits of mind as they explore postsecondary pathways and learn to think and work like professionals in areas they care deeply about.

## Budget Information

<b>Projections:</b>	2026-2027	2027-2028	2028-2029	2029-2030	2030-2031
Daily Enrollment	292	400	400	400	400
Total Students (every other day)	584	800	800	800	800

ACE Academy Lambs Ln ▼

<b>Expense</b>	23-24 Actuals	24-25 Actuals	25-26 Adopted	26-27 Draft	Increase	Increase %
Salary				\$3,421,221	\$3,421,221	
Other Wages				\$121,965	\$121,965	
Benefits				\$1,529,784	\$1,529,784	
Operations				\$132,682	\$132,682	
<b>Total</b>				<b>\$5,205,652</b>	<b>\$5,205,652</b>	

<b>State Category Report</b>	23-24 Actuals	24-25 Actuals	25-26 Adopted	26-27 Draft	Increase	Increase %
Instruction				\$4,664,040	\$4,664,040	
Admin/Attend&Health				\$91,460	\$91,460	
Technology				\$112,071	\$112,071	
Building Services				\$338,081	\$338,081	
<b>Total</b>				<b>\$5,205,652</b>	<b>\$5,205,652</b>	

## Center for Learning and Growth

Alternative education center specializing in short-term intervention for students in grades 6-12

### General Information

- **Address:** 227 Lambs Lane, Charlottesville, VA 22901
- **Phone:** 434-833-5970
- **Website:** [k12albemarle.org/our-departments/student-services/center-for-learning-and-growth](https://k12albemarle.org/our-departments/student-services/center-for-learning-and-growth)

### Facility Information

- **Opened:** The Center for Learning and Growth has served ACPS students since at least the 1980s.
- **Site:** After operating in multiple locations over the years, it is now located at Trailhead Learning Community (formerly Ivy Creek Building).

### Who We Are: A Snapshot

The **Center for Learning and Growth** serves as the Division's alternative learning program for students in grades 6-12. Using a restorative approach, the program helps students address referral concerns while staying connected to their base school. Instruction blends face-to-face and computer-based learning with individualized support provided through a Superintendent referral. A dedicated team collaborates with families, base schools, and community partners to support students' academic, social and emotional needs. Referrals are coordinated by the Department of Student Services in collaboration with school principals, parents, and students, with additional referrals made through the Superintendent's Office or School Board action.

## Budget Information

Center For Learning & Growth ▼

<b>Expense</b>	<b>23-24 Actuals</b>	<b>24-25 Actuals</b>	<b>25-26 Adopted</b>	<b>26-27 Draft</b>	<b>Increase</b>	<b>Increase %</b>
Salary	\$372,208	\$369,714	\$410,197	\$429,186	\$18,989	4.6%
Other Wages	\$2,527	\$4,470				
Benefits	\$124,132	\$120,517	\$169,452	\$204,748	\$35,296	20.8%
<b>Total</b>	<b>\$498,867</b>	<b>\$494,701</b>	<b>\$579,649</b>	<b>\$633,934</b>	<b>\$54,285</b>	<b>9.4%</b>

<b>State Category Report</b>	<b>23-24 Actuals</b>	<b>24-25 Actuals</b>	<b>25-26 Adopted</b>	<b>26-27 Draft</b>	<b>Increase</b>	<b>Increase %</b>
Instruction	\$419,316	\$459,017	\$493,971	\$459,702	(\$34,269)	-6.9%
Building Services	\$79,551	\$35,684	\$85,678	\$174,232	\$88,554	103.4%
<b>Total</b>	<b>\$498,867</b>	<b>\$494,701</b>	<b>\$579,649</b>	<b>\$633,934</b>	<b>\$54,285</b>	<b>9.4%</b>

## Specialized Academic Center (SAC) and Post High

Special education center providing intensive behavioral supports for K-12 students, including those with emotional disabilities, and functional life skills instruction for Post High students (ages 18-22).

**Note:** Beginning in the 2025-26 school year, the Post High program (formerly located behind Burley Middle School) was moved to the Trailhead Learning Community at the Lambs Lane Campus. The Specialized Academic Center and Post High are operated under one budget.

### General Information

- **Address:** 227 Lambs Lane, Charlottesville, VA 22901
- **Phone:** 434-975-9363

### Facility Information

- **Open:** 2025
- **Site:** Located at the Trailhead Learning Community on Lambs Lane Campus in 2025-26 (formerly Ivy Creek Building).

### Who We Are: A Snapshot

The **Specialized Academic Center (SAC)** team provides intensive behavioral supports in a low teacher-to-student ratio setting for K-12 students with disabilities who might otherwise be placed outside of Albemarle County Public Schools. Beginning in the 2025-26 school year, SAC expanded its services to include intensive behavioral supports for K-12 students with emotional disabilities and functional life skills instruction for Post High students (ages 18-22).

## Budget Information

Specialized Academic Center ▼

Expense	23-24 Actuals	24-25 Actuals	25-26 Adopted	26-27 Draft	Increase	Increase %
Salary	\$429,157	\$513,705	\$2,155,270	\$2,217,263	\$61,993	2.9%
Other Wages	\$2,629	\$37,430		\$52,286	\$52,286	
Benefits	\$191,744	\$246,073	\$1,067,125	\$1,093,047	\$25,922	2.4%
Operations			\$70,000	\$72,000	\$2,000	2.9%
<b>Total</b>	<b>\$623,529</b>	<b>\$797,208</b>	<b>\$3,292,395</b>	<b>\$3,434,596</b>	<b>\$142,201</b>	<b>4.3%</b>

State Category Report	23-24 Actuals	24-25 Actuals	25-26 Adopted	26-27 Draft	Increase	Increase %
Instruction	\$623,529	\$676,717	\$2,741,420	\$3,105,132	\$363,712	13.3%
Admin/Attend&Health		\$120,491	\$417,136	\$179,002	(\$238,134)	-57.1%
Building Services			\$133,839	\$150,462	\$16,623	12.4%
<b>Total</b>	<b>\$623,529</b>	<b>\$797,208</b>	<b>\$3,292,395</b>	<b>\$3,434,596</b>	<b>\$142,201</b>	<b>4.3%</b>

## OTHER MULTI-SCHOOL SERVICES

This area includes staff assigned to schools as needed throughout the year but not currently designated to a specific school. These positions support emergency staffing needs, new program proposals, and other flexible assignments based on individual school needs.

		<i><b>FTE Summary</b></i>	<b>2026-27 Draft</b>
<b><i>Regular Instruction</i></b>	Emergency Staffing		7.0
	Class Load Staffing		5.0
	Math & Data Specialists Proposal		6.0
	Teaching Assistants (CBA Contingency)		0.3
	Art, Music, PE Teachers (CBA Contingency)		2.0
<b><i>School-Based Substitutes</i></b>	Holdback		10.0
<b><i>Intervention</i></b>	Holdback		2.0
<b><i>Special Education</i></b>	Multi-school Teachers		42.3
	Multi-school Teaching Assistants		4.0
	SPED Specialists Proposal		3.0
	Holdback		3.0
	Growth		3.0
	Psychologists		13.2
<b><i>English Learners Program</i></b>	Multi-school Teacher / Holdback		2.0
<b><i>Professional Development</i></b>	Instructional Coach		12.0
<b><i>Building Services</i></b>	Custodian		16.1
<b><i>Fiscal Services</i></b>	Trainer		1.0
<b>Total Budgeted FTE</b>			<b>131.9</b>

## Budget Information

Multi-School Services ▼

Expense	23-24 Actuals	24-25 Actuals	25-26 Adopted	26-27 Draft	Increase	Increase %
Salary	\$5,587,171	\$5,284,577	\$7,335,300	\$8,919,371	\$1,584,071	21.6%
Other Wages	\$359,463	\$255,234	\$502,566	\$995,100	\$492,534	98.0%
Benefits	\$2,260,490	\$2,185,775	\$3,313,466	\$4,125,440	\$811,974	24.5%
<b>Total</b>	<b>\$8,207,124</b>	<b>\$7,725,586</b>	<b>\$11,151,332</b>	<b>\$14,039,911</b>	<b>\$2,888,579</b>	<b>25.9%</b>

State Category Report	23-24 Actuals	24-25 Actuals	25-26 Adopted	26-27 Draft	Increase	Increase %
Instruction	\$5,969,852	\$5,481,039	\$8,577,732	\$11,396,564	\$2,818,832	32.9%
Admin/Attend&Health	\$1,330,441	\$1,215,502	\$1,497,961	\$1,433,763	(\$64,198)	-4.3%
Technology	\$8,709					
Building Services	\$898,122	\$1,029,045	\$1,075,639	\$1,209,584	\$133,945	12.5%
<b>Total</b>	<b>\$8,207,124</b>	<b>\$7,725,586</b>	<b>\$11,151,332</b>	<b>\$14,039,911</b>	<b>\$2,888,579</b>	<b>25.9%</b>