



November 2025 Capital Project Update Somers Central School District

Presenter – Triton Construction Company

John Hansen
Project Executive | Upstate Education Division

Presenter – H2M architects + engineers

Michael Lantier, P.E., LEED AP
Vice President | Deputy Market Director, Education



Teddy Tsiboukis

VP | Estimating



Kevin Sawyer

VP | K-12 Construction



John Hansen

Project Executive
Upstate Education



Frank Arturi

Senior Project Manager



Sydney Barrella

Assistant Project
Manager

CONSTRUCTION MANAGEMENT TEAM





Saverio Belfiore, AIA

Mike Lantier, P.E.

Kevin Medler,

Sean Peters, P.E.

Simon Mandic

S.V.P. – Director/Architect

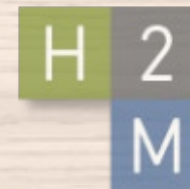
V.P. – Director/Engineering

Studio Director

Project Engineer

Senior Project Designer

ARCHITECTURAL + ENGINEERING TEAM



architects + engineers
practical approach. creative results.



H2M Architects + Engineers

Who We Are

14 Locations . Quick Response . Wide Range of Services . 500 + Professionals
We offer our clients the benefit of a full “under one roof” consulting network,
and a full range of professional services including:

ARCHITECTURE | ENGINEERING (CIVIL, STRUCTURAL, WATER SUPPLY, WASTEWATER, MECHANICAL/HVAC, ELECTRICAL,
PLUMBING/SANITARY, FIRE PROTECTION, ENVIRONMENTAL) | CONSTRUCTION INSPECTION/ADMINISTRATION
LANDSCAPE ARCHITECTURE | LAND USE PLANNING | SURVEY | SUSTAINABLE DESIGN | GIS MAPPING | HISTORICAL
PRESERVATION STORAGE TANK MANAGEMENT | ENVIRONMENTAL PLANNING/PERMITTING | TRANSPORTATION
ENGINEERING
HYDROGEOLOGICAL SERVICES | INDOOR AIR QUALITY | SECURITY

Locations: Melville, NY ▪ New York, NY ▪ Riverhead, NY ▪ Suffern, NY ▪ Troy, NY ▪ Westchester, NY ▪ Butler, NJ ▪ Parsippany, NJ ▪ Central New Jersey, NJ
Windsor, CT ▪ Pittsburgh, PA ▪ Maimi, FL ▪ Tampa, FL ▪ West Palm Beach, FL

Current Facilities & Building Age...



PRIMROSE ELEMENTARY SCHOOL – 88,701 sq. ft
(1955, 1996, 2000)



SOMERS INTERMEDIATE SCHOOL – 90,040 sq. ft
(1971, 1990, 2007)



SOMERS HIGH SCHOOL – 216,865 sq. ft
(1971, 1990, 2009)



SOMERS MIDDLE SCHOOL – 177,315 sq. ft
(1936, 1950, 1990, 2009)



TRANSPORTATION FACILITY – 4,000 sq. ft
(2009)



WASTEWATER TREATMENT FACILITY – 4,300 sq. ft
(2009)



Summary of Project Costs

Primrose Elementary School	Somers Intermediate School	Somers Middle School	Somers High School	Transportation Facility	Total
~\$12.2 Million	~\$11.7 Million	~\$15.1 Million	~\$23.2 Million	~\$1.6 Million	\$63,919,864

PROJECT - PHASE 1

Primrose Elementary School Phase 1

- Wooden Playground*
- Classroom Doors
- Entrance Canopy*
- Stone Wall

Somers Intermediate School Phase 1

- Playground*
- Art Room Cabinetry*

Somers Middle School Phase 1

- Fire Alarm
- HVAC
- Digital School Sign*

Somers High School Phase 1

- Replace Boilers
- Exterior LED
- Press Box
- Track Replacement

* USER GROUP MEETINGS IN PROGRESS

PROJECT - PHASE 2

Primrose Elementary School Phase 2

- Fire Alarm
- Electrical Panel Boards
- Building Weatherization
- HVAC
- Bathrooms
- Flooring
- Windows
- Water Service Room

Somers Intermediate School Phase 2

- Sitework
- Stone Wall
- HVAC
- Fire Alarm
- Outside Learning Spaces
- Building Weatherization
- Windows
- Teachers' Entry Railing
- Bathroom Upgrades
- Flooring & Ceilings
- Doors

PROJECT - PHASE 2 (continued)

Somers Middle School Phase 2

- Building Envelope
- Roofs
- Windows
- Electrical Upgrades
- Sitework
- HVAC
- Classroom Upgrades
- Kitchen Faculty Bathrooms
- Doors

Somers High School Phase 2

- HVAC
- Fire Alarm
- Panel Boards
- Building Weatherization
- Building Envelope
- Gym Exterior Ramp
- Flooring & Ceiling Replacement
- Bathroom Upgrades
- Windows
- Doors
- Classroom Upgrades
- Kitchen Freezers
- Gym & Locker Rooms

PROJECT - PHASE 3

Primrose Elementary School Phase 3

- Classroom Upgrades
- Sitework

Somers Intermediate School Phase 3

- Electrical
- Classroom Upgrades
- Potable Water Tank Replacement

Transportation Facility Phase 3

- Upgrade Bay Wash Station
- Sitework
- CCTV System

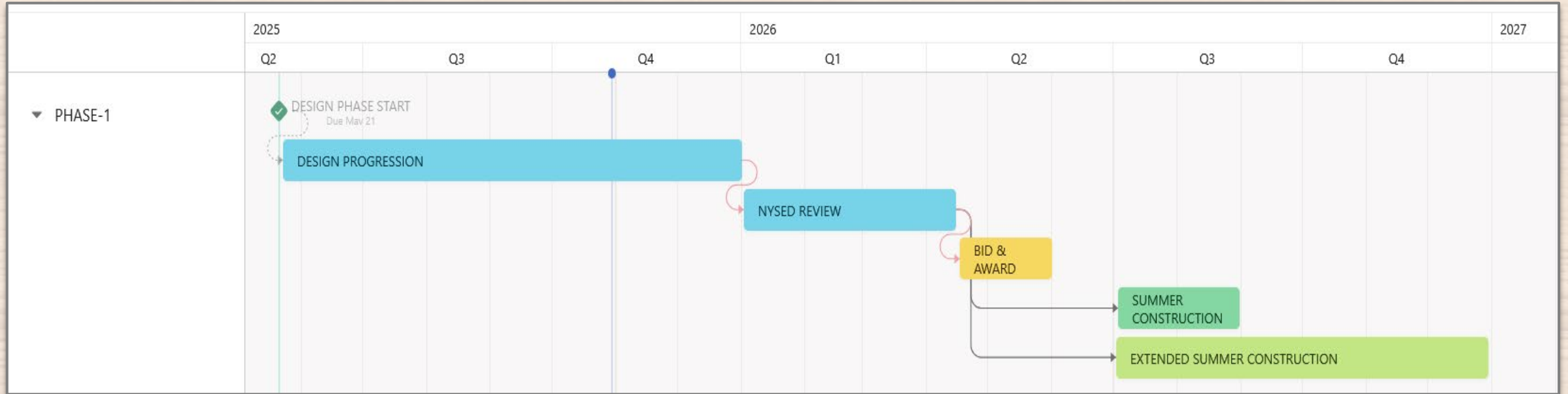
Somers Middle School Phase 3

- Sitework
- Outside Learning Spaces
- Classroom Upgrades
- Kitchen LPG Tank

Somers High School Phase 3

- Sitework
- Retaining Wall
- Auditorium
- Classroom Upgrades
- Auditorium

ANTICIPATED PROJECT SCHEDULE – PHASE 1



ANTICIPATED OVERALL PROJECT SCHEDULE

	PHASE 1	PHASE 2	PHASE 3
Phase Kickoff	May 2025	December 2025	June 2026
Design	June–December 2025	January–July 2026	July–December 2027
SED Submission	December 2025	July 2026	January 2027
Bid	March–June 2026	September–May 2026	March–June 2028
Construction Start	Summer 2026	Summer 2027– Summer 2028	Summer 2028
Phase Completion	October 2026	September 2028	November 2028

NEXT STEPS

- Continue User Group Meetings
- Phase 1 SED Submission
- Spring 2026 – BOE Update
- Continue Phase 2 Design Progression



Thank you, any questions?