

What Is WIDA ACCESS?

WIDA ACCESS is a test administered to students in grades K-12 who are identified as English learners. An English learner is a student who is formally identified as needing language supports to successfully engage with academic content in English.

WIDA ACCESS measures students' English language skills in Listening, Reading, Speaking and Writing.

Why Does My Child Take WIDA ACCESS?

Your child was identified as an English learner. English learners take an English language proficiency test, like WIDA ACCESS, every year. Teachers use WIDA ACCESS results as one way to check your child's progress in English language proficiency.

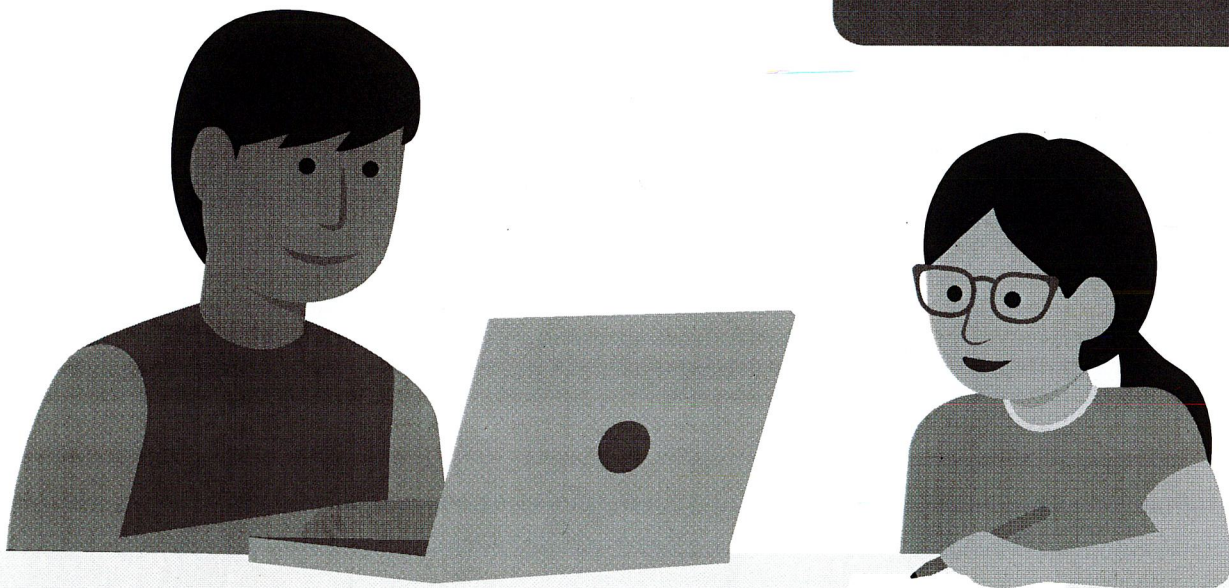
How Are WIDA ACCESS Test Scores Used?

Testing helps teachers understand if students have the language skills they need to fully participate in the classroom. Along with your child's schoolwork, teachers use WIDA ACCESS test scores as they decide how best to teach your child.

Test scores also help teachers track your child's progress in learning academic English and help schools decide what English language support services to provide. You can use test information to advocate for your child at school.

English Language Proficiency

An English language proficiency level is a measurement of where students are in the process of developing the English language skills needed to access content instruction in English. When students reach the highest levels of English language proficiency, they no longer need language support services to participate in content instruction that is in English.



Getting Ready for WIDA ACCESS

- Your child does not need to study for WIDA ACCESS. The test is an opportunity for students to demonstrate all the ways that they understand and can communicate in English.
- Find examples of WIDA ACCESS test questions on the ACCESS Sample Items page of the WIDA website, wida.wisc.edu/assess/access/preparing-students/practice.
- Prepare for test day by making sure your child gets plenty of sleep and eats breakfast.
- Talk with your child's teachers about when you will receive the test scores, how your child's school uses those scores and how your family can support your child's language development at home.

Questions You Can Ask Your Child's Teachers

- When will my child take WIDA ACCESS?
- When will I receive my child's WIDA ACCESS test scores?
- How will my child's English language development goals be recorded and tracked?
- How are test scores used to help my child make progress in learning academic English?
- How do you decide when my child stops receiving English language services?

