



ELIZABETH PUBLIC SCHOOLS

ANNOUNCEMENTS

January 2026



January is SCHOOL BOARD RECOGNITION MONTH



Maria Z. Carvalho
President



Stephanie Goncalves Pestana
Vice President



Diane Barbosa



Charlene Bathelus



Iliana Chevres



Stephanie Clervoyant-Noel



Jerry D. Jacobs



Rosa E. Moreno Ortega



Isaias J. Rivera

JOIN US THIS MONTH TO **RECOGNIZE** THE HARD WORK AND DEDICATION OF **OUR SCHOOL BOARD MEMBERS** WHO MAKE A DIFFERENCE EVERY DAY.



ELIZABETH PUBLIC SCHOOLS
Every Child, Achieving Excellence

Early Childhood Lottery Registration

February 18 –
March 19





ELIZABETH PUBLIC SCHOOLS

Every Child, Achieving Excellence

Gifted & Talented Program Application

February 25 – April 10

G&T Information
Session

February 25
School 22

5:30p.m. – 6:30p.m.



DISTRICT FINANCIAL AID NIGHTS



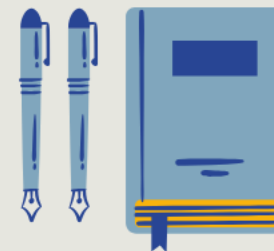
**STUDENTS & PARENTS
MUST BRING LAPTOPS**

**JANUARY 20
JANUARY 27
FEBRUARY 3**

**FEBRUARY 19
MARCH 5**

**MARCH 24
APRIL 21
MAY 12**

5:00PM - 7:00PM



**JOHN E. DWYER
TECHNOLOGY ACADEMY
123 PEARL STREET**

FAFSA:

- ▶▶▶ CREATE FSA ID PRIOR TO ATTENDING AT WWW.FAFSA.GOV
- ▶▶▶ MUST BRING LAPTOP & TAX DOCUMENTS FOR FAFSA COMPLETION WORKSHOPS

SCHOLARSHIPS:

- ▶▶▶ CREATE A GOING MERRY ACCOUNT PRIOR TO ATTENDING AT WWW.GOINGMERRY.COM

▶▶▶ **PRESENTATIONS IN ENGLISH & SPANISH** ◀◀◀

1) Type www.epsnj.org into your web browser's address bar, click on menu in the upper right corner, hover over "Students and Families", and select "Flu and RSV Resources"

The screenshot shows the top navigation bar of the Elizabeth Public Schools website. On the left, there are links for "Our Schools" and "Translate". In the center is the school logo with the tagline "Every Child, Achieving Excellence". On the right, a "menu" button is circled in red. Below the navigation bar is a large banner image of students in a classroom. A vertical sidebar on the left is labeled "Our Social Feeds". A dark blue navigation menu is open, listing various categories. The "Students and Families" category is highlighted in orange. Under this category, "Flu & RSV Resources" is highlighted in white. Other categories include About EPS, Board of Education, Team Members, Community, Departments, News, Calendar, Annual Reports, and PowerSchool. A search bar is visible over the banner image with the text "I'm looking for...".

Our Schools Translate

ELIZABETH PUBLIC SCHOOLS
Every Child, Achieving Excellence

menu

Our Social Feeds

Our Social Feeds

About EPS

Board of Education

Students and Families

Team Members

Community

Departments

News

Calendar

Annual Reports

PowerSchool

Adult Basic Literacy Education

American Rescue Plan

Assessment Letter & Calendar to Parents

Back to School Parent Resources

Contact Information

Contact Information Verification

EPS Emergency Virtual Instruction Plan 2024-2025

Family Resources

Flu & RSV Resources

Gifted and Talented Program

High School Academies

Interpretation and Translation Services

iPrep Academy School No. 8 Registration Lottery

close X

I'm looking for...

Protect Your Health- Influenza/RSV Resources

2) Click on the Flu & RSV Resources icon at the bottom of the menu page.

The screenshot shows a dark blue website menu. On the left, a vertical list of links includes: About EPS, Board of Education, Students and Families, Team Members, Community, Departments, News, Calendar, Annual Reports, and PowerSchool. In the center, a large yellow first aid kit icon is positioned above the text 'FLU & RSV RESOURCES', which is enclosed in a red rectangular box. At the bottom of the menu, a row of smaller icons represents various services: Apply Now, New Student Registration, Back to School Parent Resources, Transportation, Superintendent's Communications, Meal Application, Flu & RSV Resources (circled in red), Parent Development Workshops, Contact, Handbook, and ESS Substitute Positions. A search bar with the placeholder text 'I'm looking for...' is overlaid on a background image of students in a classroom. A 'close' button with an 'x' icon is located in the top right corner of the search bar area.

Protect Your Health- Influenza/RSV Resources

Fall 2025
New Jersey Graduation
Proficiency Assessment
(NJGPA)



PARTICIPATION AND PERFORMANCE

In October 2025, the New Jersey Graduation Proficiency Assessment (NJGPA) was administered to 12th grade students across New Jersey as a retest of the graduation assessment requirement that is required for the Class of 2026.

Students who participated in this administration are either:

- Students who previously took the NJGPA but did not earn a “Graduation Ready” score
- Students who did not previously take the NJGPA but are expected to graduate as part of the Class of 2026

Subject	Number of Students Assessed	Number of Students Scoring “Graduation Ready”	Percent of Students Scoring “Graduation Ready”
English Language Arts (ELA)	292	118	40.4%
Mathematics	534	124	23.3%

Note: This is not indicative of the performance of the Graduating Class of 2026 as a whole; that will be reported in Fall 2026

inside

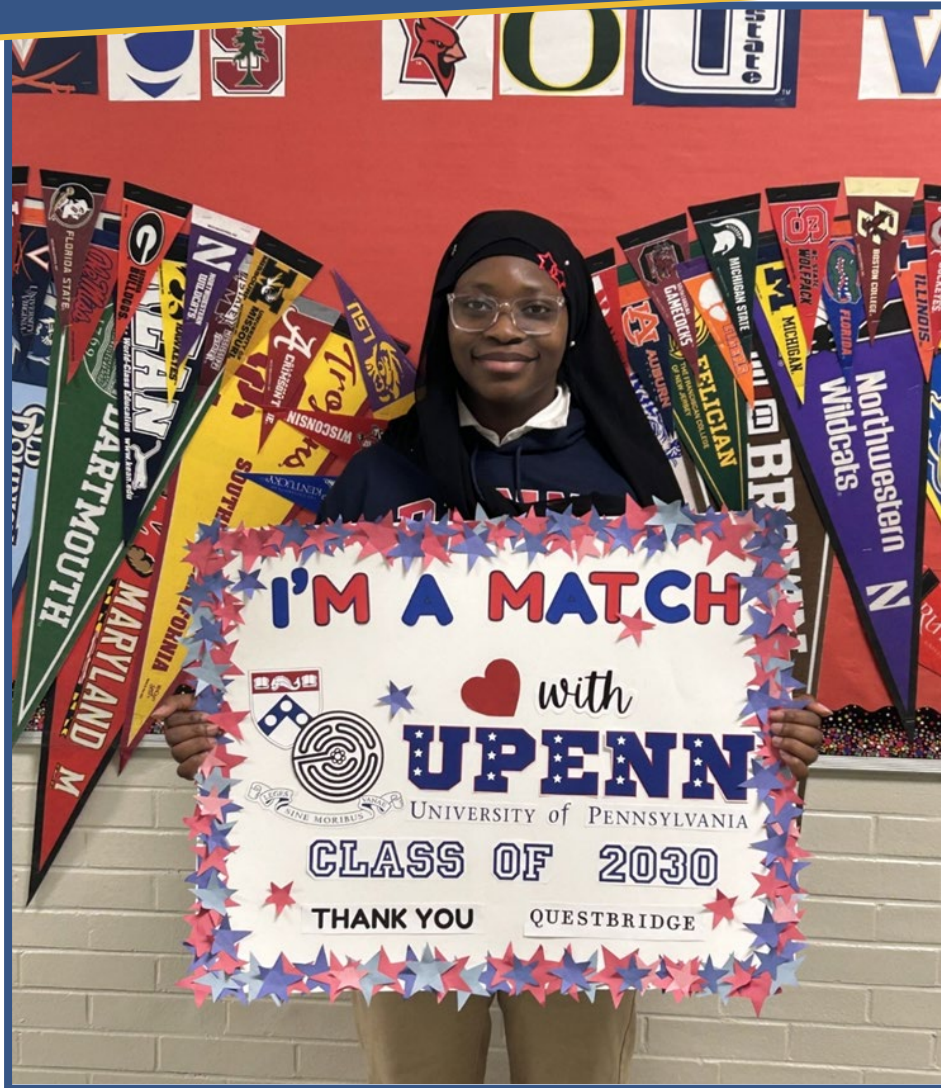
EPSS



News From Central

Elizabeth Public Schools, Elizabeth, NJ

HAMILTON SENIOR RECEIVES FULL SCHOLARSHIP THROUGH QUESTBRIDGE



Alexander Hamilton Preparatory Academy senior Yusrah Lawal has been awarded a full scholarship to the University of Pennsylvania through the 2025 QuestBridge National College Match, a national program that connects high-achieving high school seniors from low-income backgrounds with full four-year scholarships to 55 of the nation's top colleges.

Lawal was among 2,550 seniors of the Class of 2025 from throughout the nation who were recognized as Match scholarship recipients out of 7,026 finalists to be considered.

She was also awarded the Joy Prescott Humanitarian Award presented by the Kean University Leadership Council because of her dedication to the community. Yusrah has been volunteering most Fridays at a local food bank for the past 3.5 years. Additionally, she took the initiative to find two organizations for which she became an online tutor in math and science--areas where she excels. On average she tutors at least 3 hours a week through those organizations.

EPS PARTNERS WITH MONTCLAIR STATE UNIVERSITY FOR FRIENDS DAY



For over 10 years, Montclair State University has hosted Friends Day where over 100 kids with disabilities (ages 5-21) are invited to explore the school's Student Recreation Center. RecBoard, a student-led organization sponsored by the Department of Campus Recreation, plans the fun-filled day of activities for the children with games, arts & crafts, swimming, basketball, and dancing. Each child is paired with two college "buddies" to accompany him/her throughout his/her session. The department's professional staff members oversee the smooth execution of the day's events. This year's event hosted over 20% more kids than last year.

EPS SUPPORTS BE THE CHANGE DURING ANNUAL HOLIDAY FOOD DRIVE



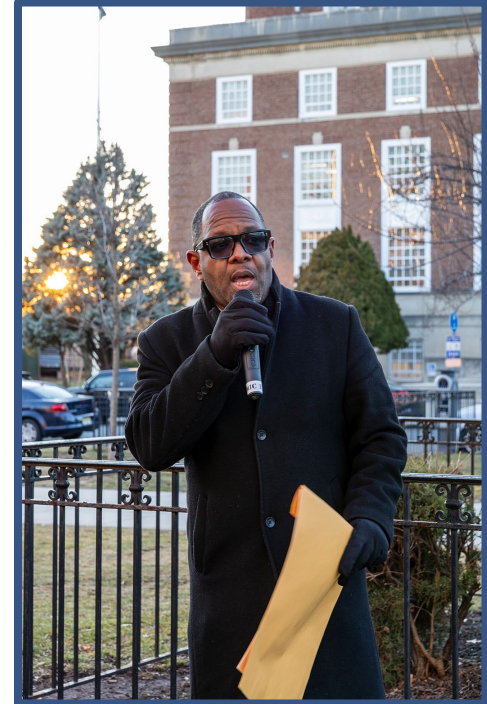
BE THE
CHANGE NJ



Be the Change, a non-profit organization consisting of students from Kean University and other volunteers dedicated to community service and activism projects that help promote peace and nonviolence in urban neighborhoods, partnered with Elizabeth Public Schools, to demonstrate its unwavering commitment to supporting families in the Elizabeth community through its annual holiday food initiative.

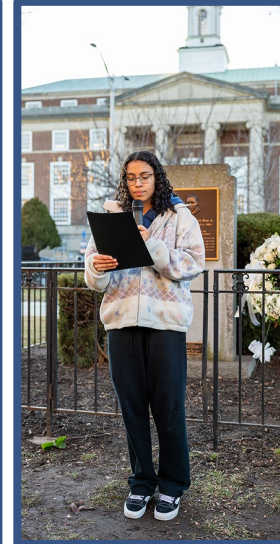
The organization worked tirelessly to gather essential food items, ensuring that families facing hardship could enjoy a warm and meaningful holiday meal. Through the support of Elizabeth Public Schools team members who helped sort, pack, and deliver donations to families in need, Be the Change was able to expand its reach in providing food to families during the holiday season.

EPS PARTICIPATES IN THE KING WREATH LAYING CEREMONY AT THE MLK MONUMENT OUTSIDE ELIZABETH CITY HALL



The MLK Committee of Elizabeth NJ, with the support of Elizabeth Public Schools, held a wreath-laying ceremony in honor of Dr. Martin Luther King, Jr. on January 15 at the MLK Monument in front of Elizabeth City Hall. City of Elizabeth Mayor J. Christian Bollwage, Elizabeth Board of Education President Maria Z. Carvalho, EPS Director of Curriculum and Instruction Samuel Etienne, Mount Teman AME Church Reverend George Britt, and Union County Commissioner Stanley J. Neron all gave remarks at the ceremony.

EPS PARTICIPATES IN THE KING WREATH LAYING CEREMONY AT THE MLK MONUMENT OUTSIDE ELIZABETH CITY HALL (CONT.)



The performances at the ceremony began with “Star-Spangled Banner” and “Lift Every Voice and Sing”, performed by George Washington Academy School No. 1 & Jerome Dunn Academy School No. 9 Music Teacher Kerry Stubbs. Additional performances included “Be the Change”, performed by the Thomas Jefferson Arts Academy Choir under the direction of Kelly Ann Cubias, an excerpt from “I Have a Dream”, performed by Winfield Scott School No. 2 students, “Litany of Commemoration”, performed by Thomas Jefferson Arts Academy student Dory Madrid, and “My Country, ’Tis of Thee”, performed by the FJC Ensemble Band, under the direction of Miguel Bolivar.



ELIZABETH PUBLIC SCHOOLS

ANNOUNCEMENTS

January 2026