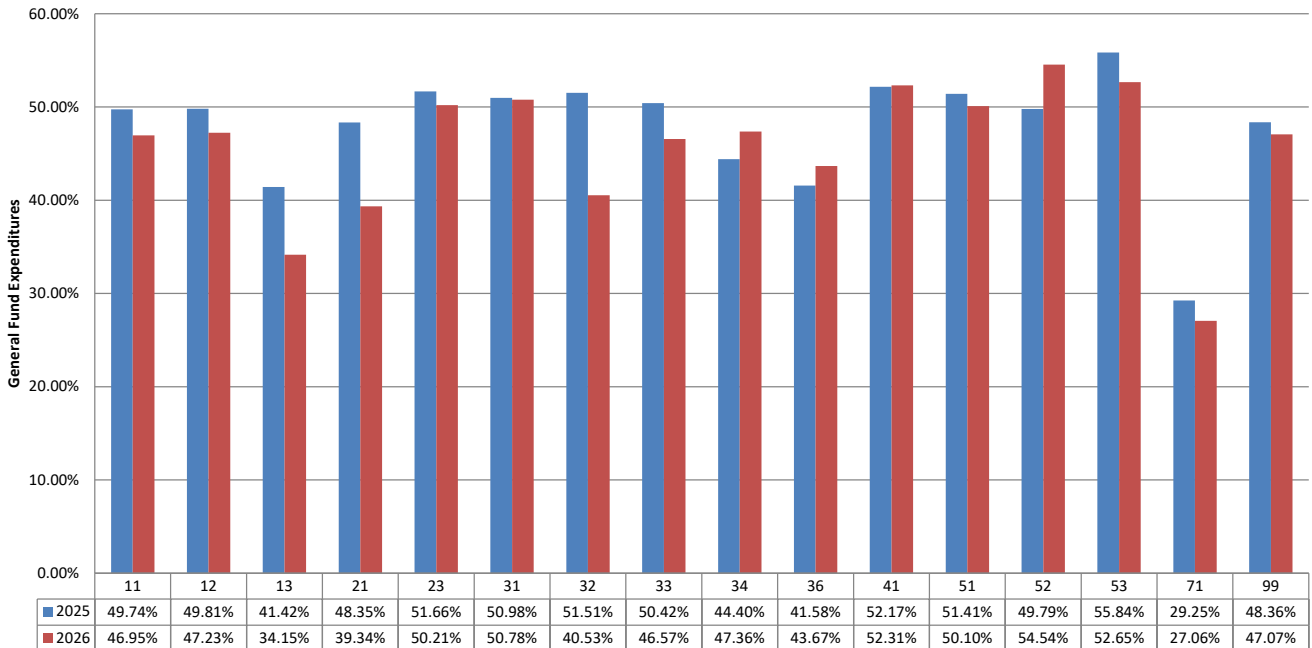


**TOMBALL INDEPENDENT SCHOOL DISTRICT**  
**FINANCIAL COMPARISON REPORT**  
As of December 31, 2025  
General Fund, Food Service, and Debt Service Funds  
(AMOUNTS IN \$000)

	<u>Budget</u>	<u>Actual</u>	<u>% of Budget Realized / Expended</u>
<b>General Fund Revenues</b>			
Property Taxes and P&I	\$ 121,475	\$ 57,359	47.2%
Co-Curricular Activity	320	503	157.3%
Investment Income	2,506	1,634	65.2%
Rents, Fees, Misc.	88	1,196	1363.5%
State Rev. - Foundation Program	104,195	64,722	62.1%
State Revenue - TRS On-Behalf	12,500	6,803	0.0%
State Revenue - Other Programs	0	0	0.0%
Federal Revenue Programs	1,064	152	14.3%
<b>Total General Fund Revenues</b>	<b>\$ 242,148</b>	<b>\$ 132,369</b>	<b>54.7%</b>
<b>General Fund Expenditures by Function</b>			
11 Instruction	\$ 156,159	\$ 73,310	46.9%
12 Instr. Resource & Media Services	2,642	1,248	47.2%
13 Curriculum Dev./Instr. Staff Development	1,248	426	34.2%
21 Instructional Leadership	5,994	2,358	39.3%
23 School Leadership	12,494	6,273	50.2%
31 Guidance & Counseling Services	7,750	3,936	50.8%
32 Social Work Services	107	43	40.5%
33 Health Services	2,858	1,331	46.6%
34 Pupil Transportation	10,545	4,994	47.4%
36 Co-curr./Extracurr. Activities	5,162	2,254	43.7%
41 General Administration	7,664	4,009	52.3%
51 Plant Maintenance & Operations	22,879	11,461	50.1%
52 Security & Monitoring	3,152	1,719	54.5%
53 Data Processing Services	3,888	2,047	52.7%
61 Community Services	1	0	0.0%
71 Leases	379	136	35.9%
81 Fac. Acquisition & Construction	0	0	0.0%
95 Juvenile Justice Alt. Ed. Program	14	0	0.0%
99 Other Intergovernmental	1,520	716	47.1%
<b>Total General Fund Expenditures</b>	<b>\$ 244,456</b>	<b>\$ 116,261</b>	<b>47.6%</b>

**Budget Targets:**

**This chart represents the percentage actually expended of the appropriations approved by the Board by Function.**



TOMBALL INDEPENDENT SCHOOL DISTRICT  
 FINANCIAL COMPARISON REPORT  
 As of December 31, 2025  
 General Fund, Food Service, and Debt Service Funds  
 (AMOUNTS IN \$000)

	<u>Budget</u>	<u>Actual</u>	<u>% of Budget Realized / Expended</u>
<b><u>Food Service Fund Revenues</u></b>			
Food Sales	\$ 6,842	\$ 2,855	41.7%
State Revenue - TRS On-Behalf	530	169	31.8%
Federal/State Reimbursement	5,455	1,851	33.9%
Total Food Service Fund Revenues	<u>\$ 12,827</u>	<u>\$ 4,875</u>	38.0%
<b><u>Food Service Fund Expenditures</u></b>	<u>\$ 12,904</u>	<u>\$ 4,847</u>	37.6%
<b><u>Debt Service Fund Revenues</u></b>			
Property Taxes and P&I	\$ 70,695	\$ 34,005	48.1%
Investment Income	805	288	35.8%
State Rev.-Foundation Allocation	6,000	14,314	238.6%
Sale of Bonds	0	1,676	0.0%
Total Debt Service Fund Revenues	<u>\$ 77,500</u>	<u>\$ 50,283</u>	64.9%
<b><u>Debt Service Fund Expenditures</u></b>	<u>\$ 77,500</u>	<u>\$ 20,941</u>	27.0%

\*\*Review additional tabs (worksheets) for reconciliations of amendments to adopted revenue and expenditure appropriations.



