



High School Curriculum Maps

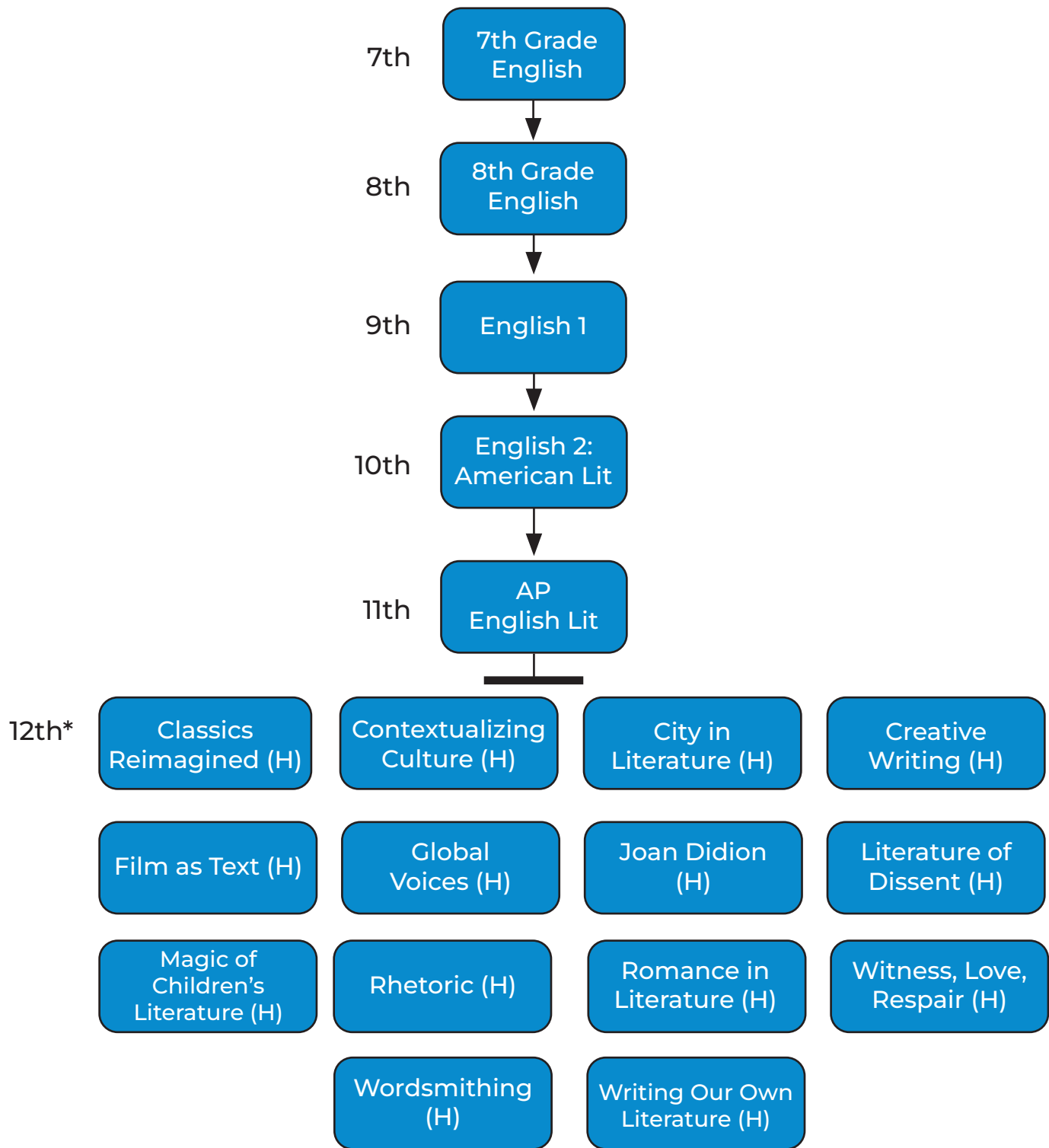
2026-2027

Flintridge Prep believes in the importance of an individualized advising process in designing the optimal academic program for each student. Academic advising is built into our program at every grade level.

These curriculum maps are intended to be used in an advising context, consistent with the school's philosophy of promoting intellectual engagement and achievement, personal development, and a balanced, healthy adolescence.

All curriculum placement decisions are considered holistically. Students in grades 10th through 12th grade must petition to take more than four AP or Honors classes.

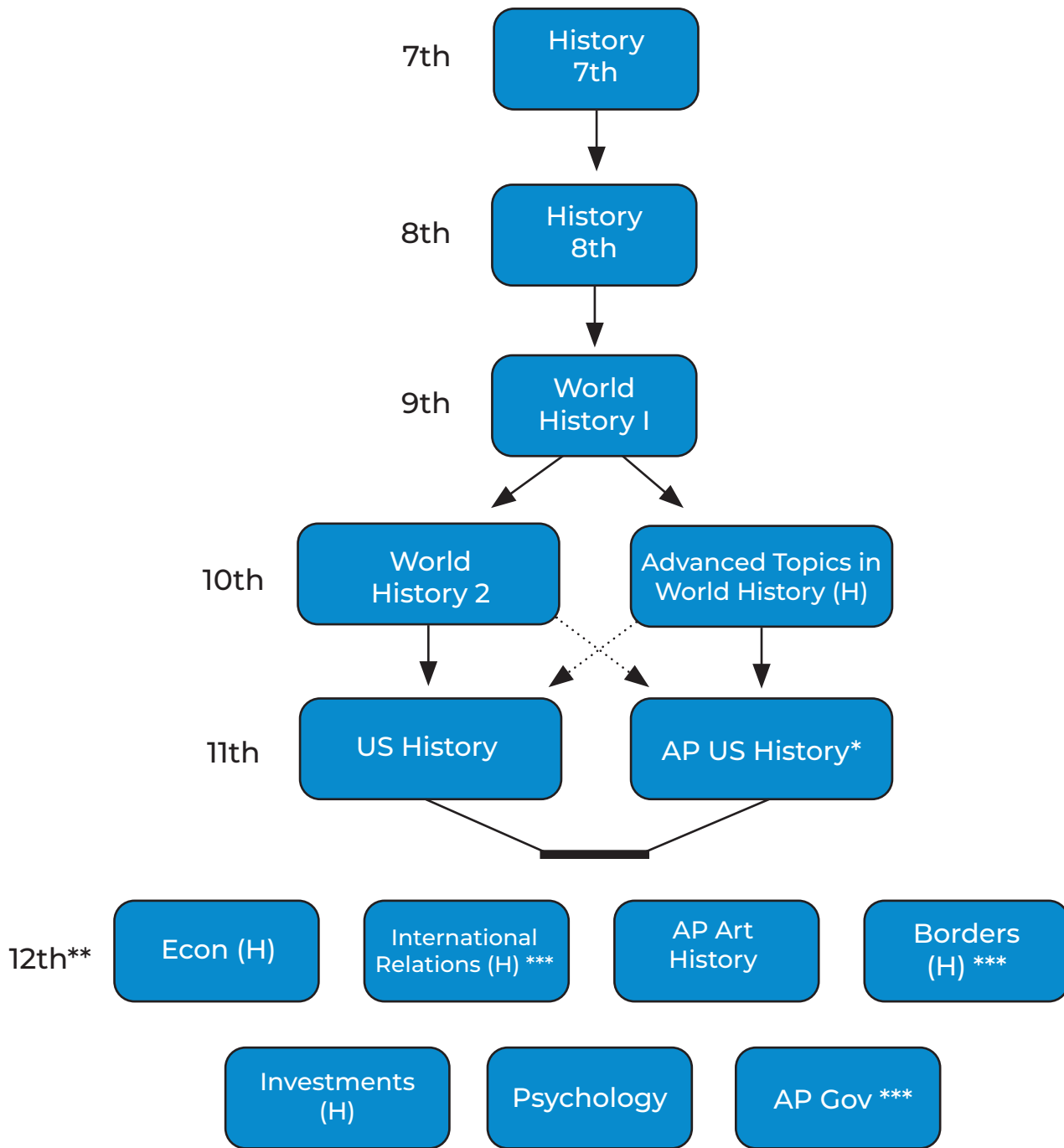
Flintridge Prep English Department Curriculum Map



N.B.: Flintridge Prep is committed to a high school program that balances academic and human development. Students must petition to take more than 4 AP/H classes in 10th-12th grade, and all curriculum placement decisions are considered holistically. Twelfth grade English classes are electives, with select courses offered in either the fall or spring semester.

*12th grade English classes are electives, with select courses offered in either the fall or spring semester.

Flintridge Prep History Department Curriculum Map



N.B.: Flintridge Prep is committed to a high school program that balances academic and human development. Students must petition to take more than 4 AP/H classes in 10th-12th grade, and all curriculum placement decisions are considered holistically.

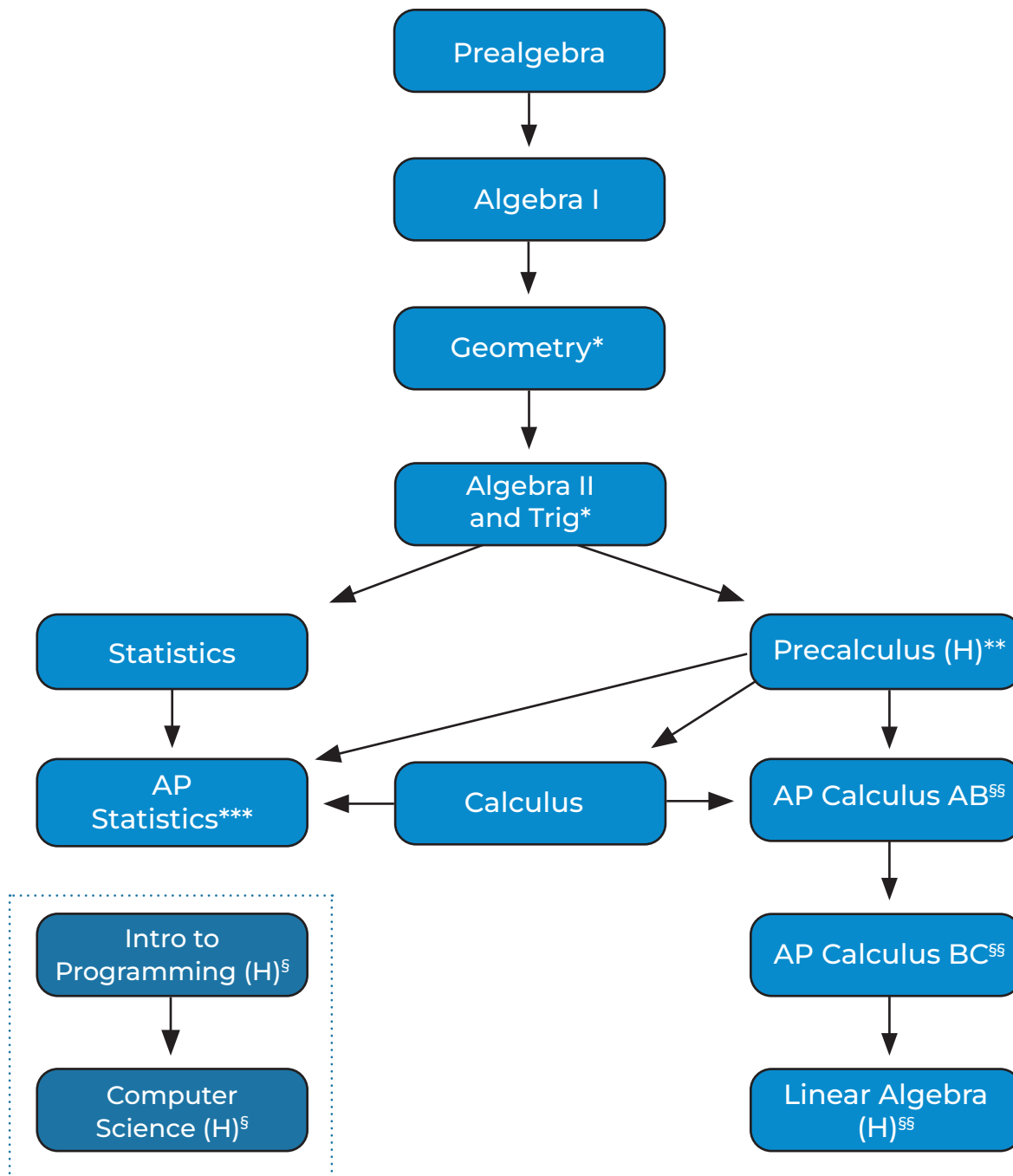
* Placement in AP US History is based on performance in 10th grade history and teacher recommendation.

** Placement in Psychology is based on application. For other 12th grade history electives, an application may be required.

*** Students must have previously completed US History or AP US History.

Flintridge Prep Math Department Curriculum Map

For incoming students, math placement is based on previous coursework and placement testing.



N.B.: Flintridge Prep is committed to a high school program that balances academic and human development. Students must petition to take more than 4 AP/H classes in 10th-12th grade, and all curriculum placement decisions are considered holistically.

* Eligible students wishing to accelerate in math may take these courses in the summer at Flintridge Prep. Eligibility is determined by performance in previous math course and teacher recommendation.

** Placement in Precalculus is based on performance in Algebra II and teacher recommendation.

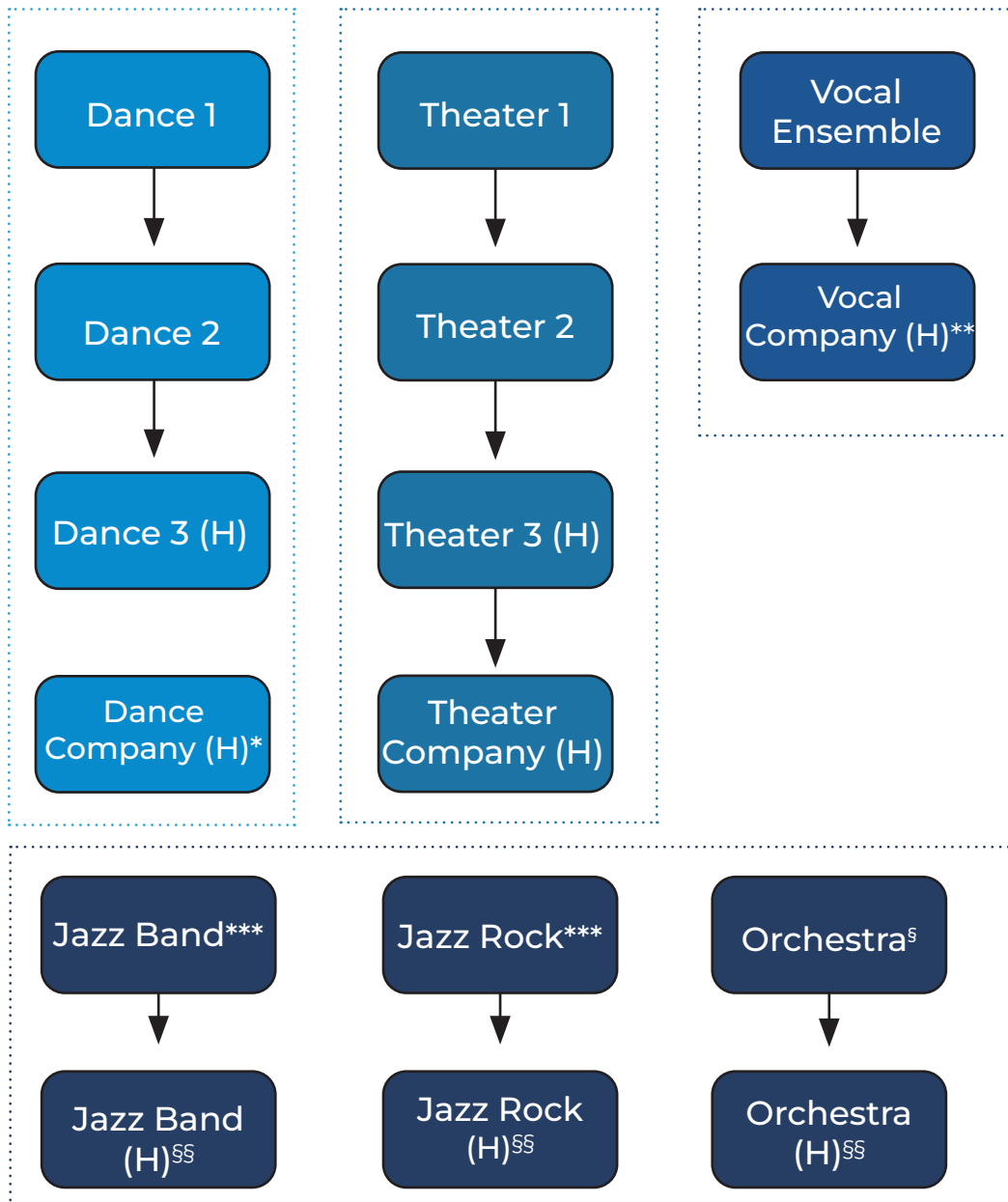
*** Seniors may concurrently enroll in AP Statistics and any math course after Precalculus (H).

§ Students must have previously completed Algebra 2/Trigonometry.

§§ Placement in AP Calc AB, AP Calc BC, and Linear Algebra is based on performance and teacher recommendation.

Flintridge Prep Performing Arts Department Curriculum Map

Incoming students are welcome in Dance 1, Drama 1, and Flintridge Singers. Incoming students may also audition for placement in Vocal Ensemble. For instrumental music, students should be proficient in their instrument, and for orchestra, students need at least two years of experience playing their orchestral instrument.



N.B.: Flintridge Prep is committed to a high school program that balances academic and human development. Students must petition to take more than 4 AP/H classes in 10th-12th grade, and all curriculum placement decisions are considered holistically.

* Placement in Dance Company is based on auditions for 11th and 12th graders.

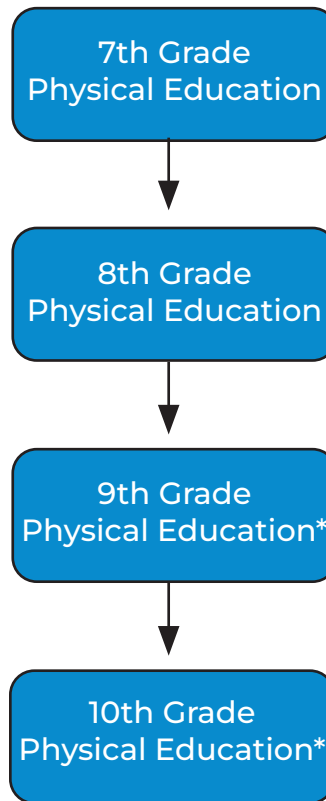
** Placement in Vocal Ensemble is based on auditions for 11th and 12th grades.

*** Jazz Rock and Jazz Band are open to students proficient in their instrument.

§ Orchestra is open to students with at least 2 years of playing experience in their orchestral instrument.

§§ Honors Instrumental Music Courses Prerequisite: 2 years of instrumental music.

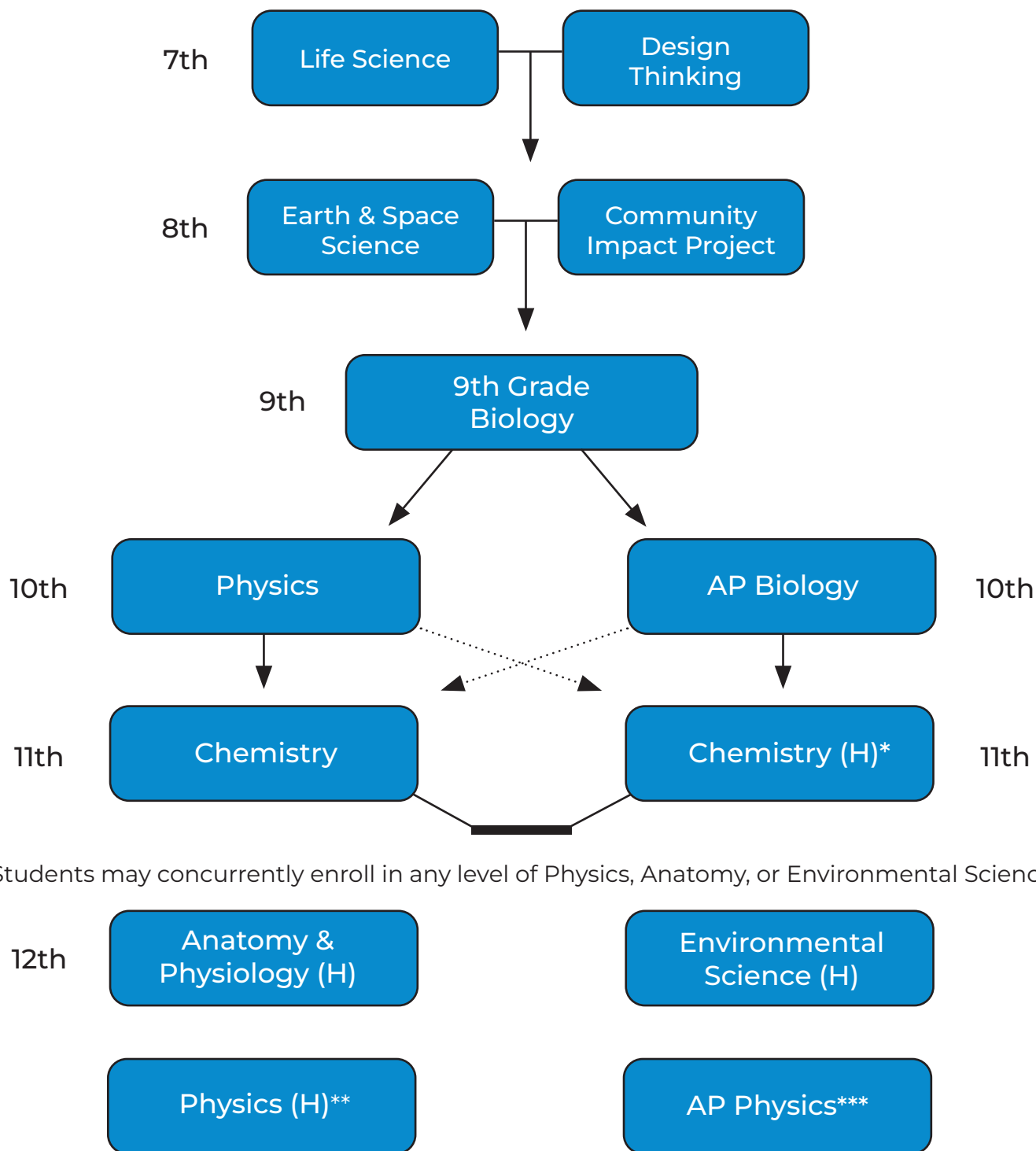
Flintridge Prep Physical Education Department Curriculum Map



N.B.: Flintridge Prep is committed to a high school program that balances academic and human development. Students must petition to take more than 4 AP/H classes in 10th-12th grade, and all curriculum placement decisions are considered holistically.

* Ninth and 10th grade students who participate in Flintridge Prep athletic programs are not required to participate in physical education courses during their active seasons.

Flintridge Prep Science Department Curriculum Map (Class of 2027)



Students may concurrently enroll in any level of Physics, Anatomy, or Environmental Science

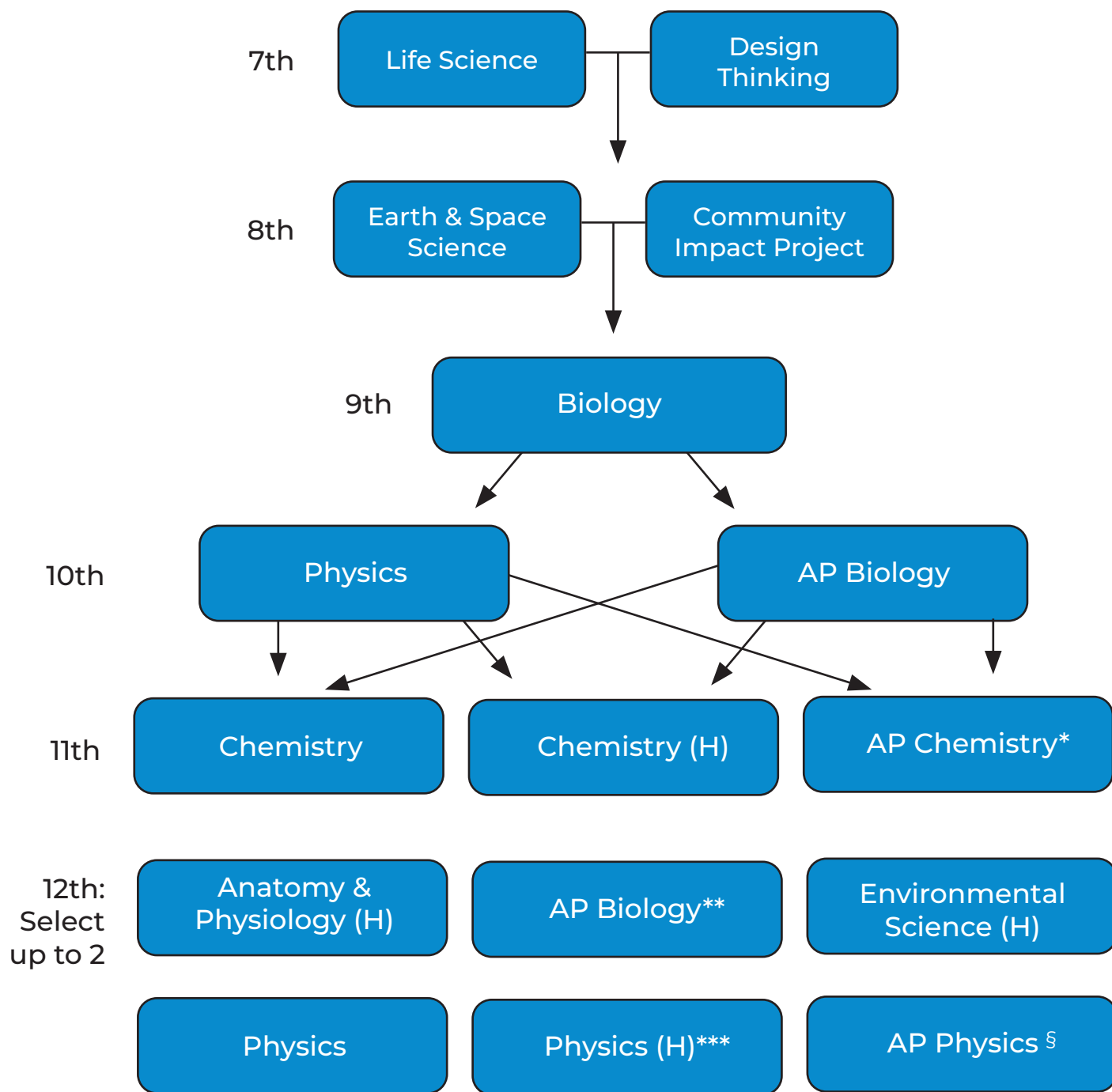
N.B.: Flintridge Prep is committed to a high school program that balances academic and human development. Students must petition to take more than 4 AP/H classes in 10th-12th grade, and all curriculum placement decisions are considered holistically. Placement in Honors and AP courses is based on performance in previous science and math courses and recommendation of teacher.

* Chemistry (H) Prerequisite: Algebra II

** Physics (H) Prerequisite: Precalculus (H)

*** AP Physics Corequisite: Students must be concurrently enrolled in or have previously completed AP Calculus BC.

Flintridge Prep Science Department Curriculum Map (Class of 2028)



N.B.: Flintridge Prep is committed to a high school program that balances academic and human development. Students must petition to take more than 4 AP/H classes in 10th-12th grade, and all curriculum placement decisions are considered holistically. Placement in Honors and AP courses is based on performance in previous science and math courses.

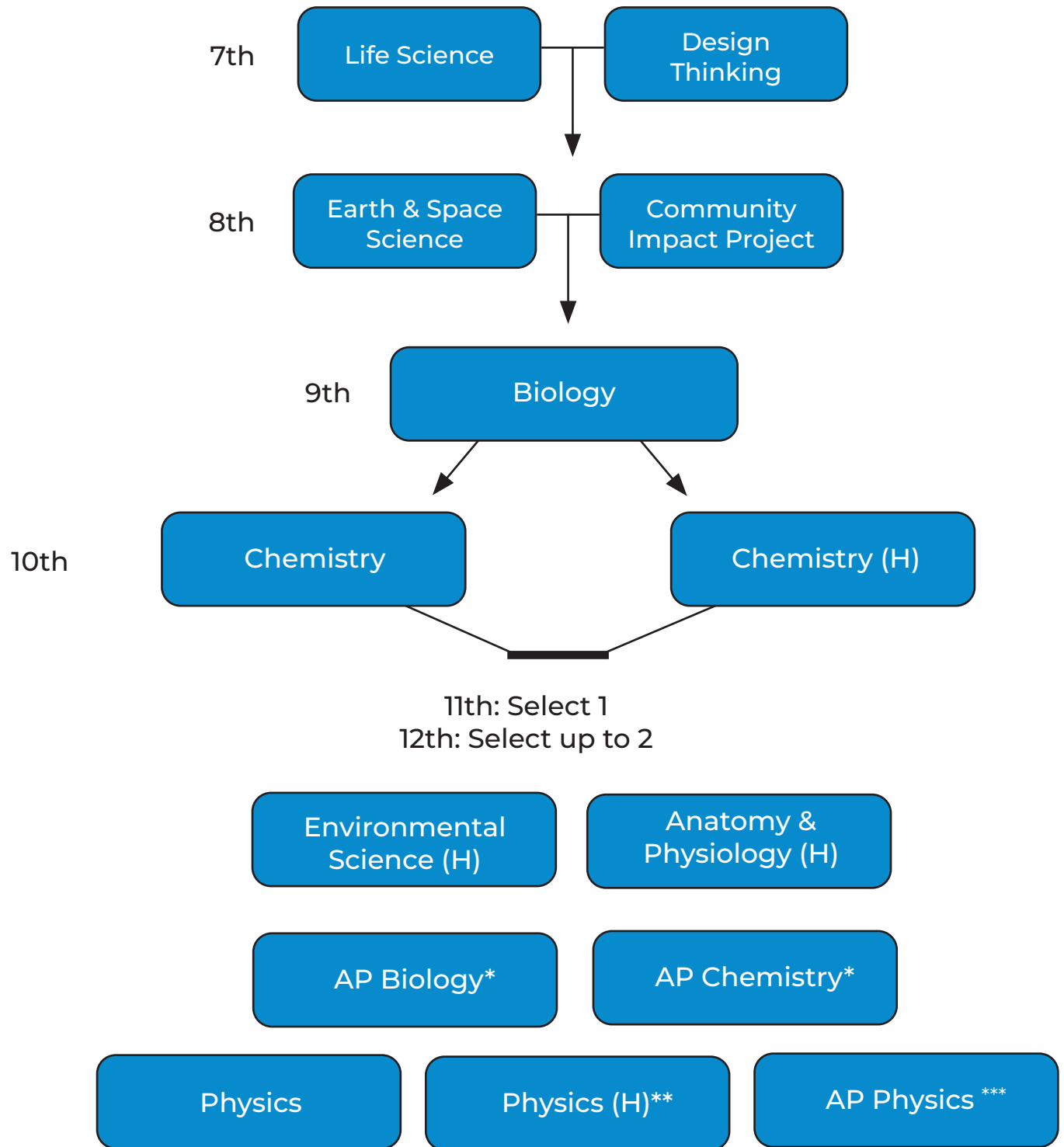
* AP Chemistry Prerequisite: Algebra II, Biology, and AP Biology or Physics.

** AP Biology Prerequisite: Algebra II, Biology, and Chemistry or Chemistry (H) or AP Chemistry.

*** Physics (H) Prerequisite: Precalculus (H).

§ AP Physics Corequisite: Students must be concurrently enrolled in or have previously completed AP Calculus BC.

Flintridge Prep Science Department Curriculum Map (Class of 2029+)



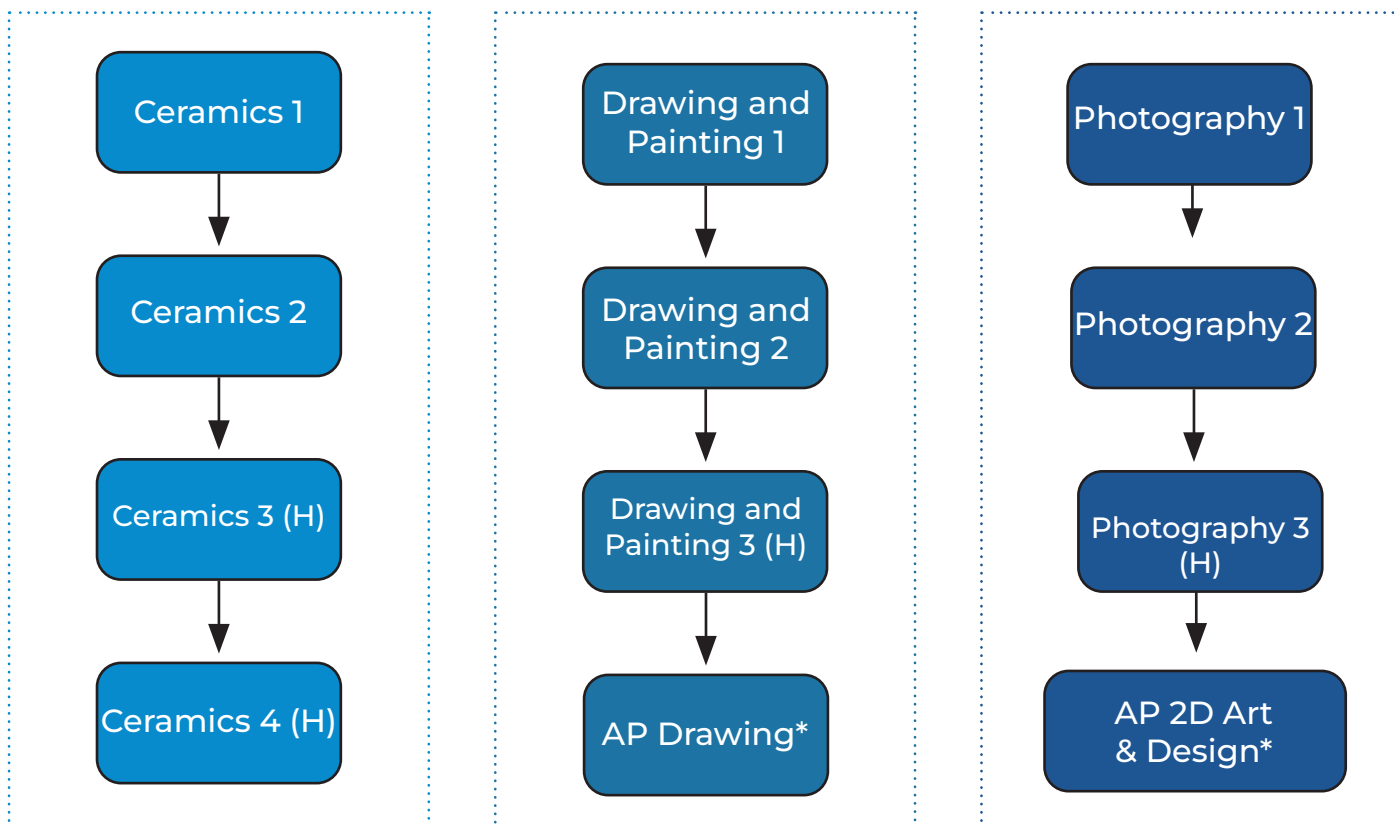
N.B.: Flintridge Prep is committed to a high school program that balances academic and human development. Students must petition to take more than 4 AP/H classes in 10th-12th grade, and all curriculum placement decisions are considered holistically. Placement in Honors and AP courses is based on performance in previous science and math courses.

* AP Biology and AP Chemistry Prerequisite: Algebra II, Biology, and Chemistry or Chemistry (H).

** Physics (H) Prerequisite: Precalculus (H).

*** AP Physics Corequisite: Students must be concurrently enrolled in or have previously completed AP Calculus BC.

Flintridge Prep Visual Arts Department Curriculum Map

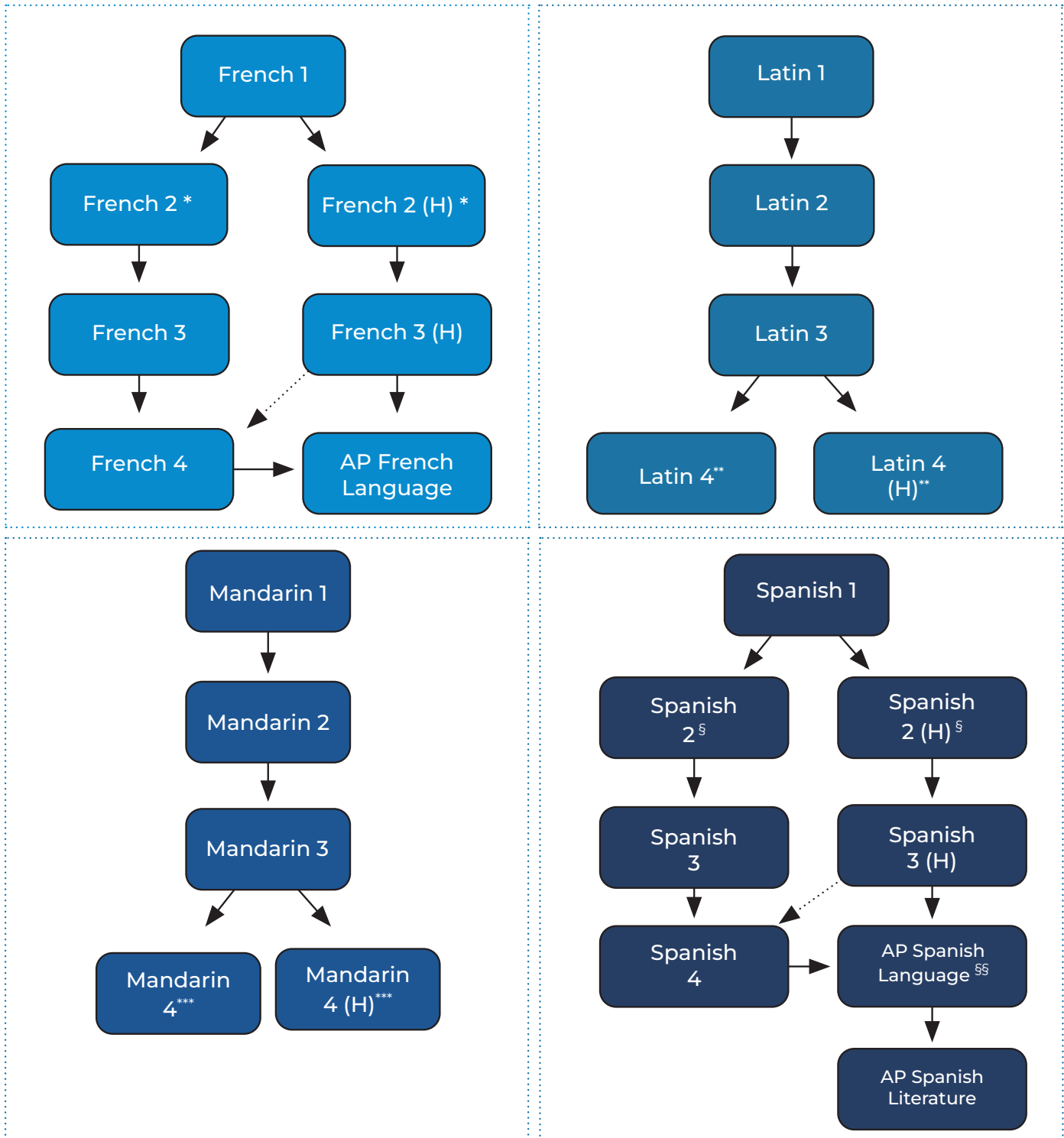


N.B.: Flintridge Prep is committed to a high school program that balances academic and human development. Students must petition to take more than 4 AP/H classes in 10th-12th grade, and all curriculum placement decisions are considered holistically. Students who want to remain on the AP track but have a scheduling conflict during either their sophomore or junior year must complete a class at an outside institution (e.g. Art Center, Otis Art Institute, Ryman Arts, CSSA, etc.) and additional work assigned by the AP teacher during the summer prior to their senior year. Students transferring into Flintridge Prep will be placed in the appropriate class level based on their transcript and a portfolio review by the teacher.

* Placement in AP Drawing and AP 2-D Art and Design is based on performance, submission of portfolio, and teacher recommendation. Prerequisites: 3 years of visual art in the medium.

Flintridge Prep World Languages Department Curriculum Map

For incoming students, placement is based on previous coursework and a placement test.



N.B.: Flintridge Prep is committed to a high school program that balances academic and human development. Students must petition to take more than 4 AP/H classes in 10th-12th grade, and all curriculum placement decisions are considered holistically.

* Placement in French 2 or French 2 (H) is based on performance in French 1 and teacher recommendation.

** Placement in Latin 4 or Latin 4 (H) is based on performance in Latin 3 and teacher recommendation.

*** Placement in Mandarin 4 or Mandarin 4 (H) is based on performance in Mandarin 3 and teacher recommendation.

§ Placement in Spanish 2 or Spanish 2 (H) is based on performance in Spanish 1 and teacher recommendation.

§§ Placement in AP Spanish Language is based on performance in Spanish 3H or Spanish 4 and teacher recommendation.