

DODGE COUNTY



REQUEST FOR QUOTE (RFQ)

**Four (4) - 1030 gallon Wedge Style Brine Tanks Manufactured by United Plastic Fabrication
(UPF)**

Highway Department, Dodge County WI

RFQ #3005-2026

Issued Date: February 10, 2026

RFQ Due Date/Time:

February 24, 2026 at 11:00 am

Submit RFQ's To:

Dodge County Highway Department

211 E Center St.

Juneau, WI 53039

920-386-3650

Office Hours: 8:00 am – 4:30 pm (Monday – Friday)

Legal Notice

The Dodge County Highway Department is accepting quotes for a vendor to supply four (4) 1030 gallon Wedge Style Brine Tanks manufactured by United Plastic Fabrication (UPF). Specifications are available on line at [Dodge County's](#) website and DemandStar at: www.demandstar.com

All Vendors are responsible for addendums. Quotes are to be sent to the Dodge County Highway Department 211 E Center St., Juneau, WI 53039 no later than 11:00 am on February 24, 2026. Submit in a sealed envelope marked "RFQ # 3005-2026- Four (4) - 1030 gallon Wedge Style Brine Tanks Manufactured by United Plastic Fabrication (UPF)". Quotes may also be emailed to tsteinbach@co.dodge.wi.us. Late receipts, and facsimiles will not be accepted.

Dodge County encourages the participation of minority, women-owned and disadvantaged business enterprises. Dodge County reserves the right to waive any informalities or technicalities and to reject any and all quotes or parts thereof deemed to be unsatisfactory or not in the County's best interest. Furthermore, Dodge County reserves the right to cancel any order or contract for failure of the successful Vendor/Contractor to comply with the terms, conditions and specifications of the request and/or contract. Dodge County reserves the right to award this request to the Vendor/Contractor whose quote is overall the most advantageous to the County in the County's sole determination.

Contact the Purchasing office at (920) 386-4224 if assistance is required.

Published by Authority of
Highway Department
By Trista Steinbach
Dodge County Purchasing Agent

Publish: February 10, 2026

1. General

It is the intent of Dodge County to contract with a vendor to supply four (4) 1030 gallon Wedge Style Brine Tanks manufactured by United Plastic Fabrication (UPF).

WITHDRAWAL OF QUOTATIONS: All quotations filed with the **DEPARTMENT** will be kept secure and unopened and will not be allowed to pass out of the custody of a representative of the **DEPARTMENT** except on written request of the Vendor or Vendor's authorized representative made prior to the time set for the opening of quotations. If such withdrawal is made, said Vendor shall not be entitled to quote on the contract at hand unless quotations are again requested for the same.

REJECTION AND ACCEPTANCE OF QUOTATIONS: The **DEPARTMENT** reserves the right to consider all quotations for a period not to exceed 90 days from the date of the opening. The Company submitting the quote shall hold pricing and other offers within the quote for 90 days. The **DEPARTMENT** also reserves the right to reject any or all quotations at any time during said 90-day period, to waive technicalities, and to accept any quotation which may be most advantageous to the **DEPARTMENT**.

DELIVERY: Vendor shall deliver equipment FOB to the **DEPARTMENT** in Juneau, Wisconsin, in compliance with date stated on Quotation Form.

WARRANTY: Successful vendor shall submit written warranty information, including length of warranty as required within the attached specifications.

DIAGNOSTIC SOFTWARE/SERVICE MANUALS, IF APPLICABLE: Successful vendor shall furnish Windows-based only diagnostic software or access to all available on-line service manuals, including all necessary wiring adaptors for diagnostic program. A total of two operator's manuals and two lubrication manuals, if applicable, must be provided.

2. RFQ Packets and Addendums

RFQ packet, updates and addendums are available on the [Dodge County website](#), and may also be obtained on [DemandStar](#)

It is the Vendor's responsibility to view the RFQ document and check the website for any updates and addendums prior to submitting a proposal for this request.

Failure by the bidder to acknowledge all addendums issued for this project may result in the quote being considered non-responsive, and the quote may be automatically rejected.

3. RFQ Tentative Project Timeline

	Date	Time
RFQ Issued	February 10, 2026	
RFQ Questions Due	February 17, 2026	10:00 am
RFQ Final Addendum Issued	February 18, 2026	10:00 am
RFQ Responses Due from Vendors	February 24, 2026	11:00 am
Order Date	February – March 2026	

4. RFQ Questions Due: February 17, 2026 / 10:00 am

Questions: All questions related to this RFQ must be in writing and received by the Dodge County Purchasing Office at least five (5) business days prior to the quote due date.

- Questions shall be directed to the Purchasing Agent via email to: tsteinbach@co.dodge.wi.us
- Questions MUST be clearly marked in the subject line: **“Questions for RFQ # 3005-2026”**

5. RFQ Final Addendum Issued Date: February 18, 2026 / 10:00 am

Answers: If any questions are received, answers to all written questions will be issued in the form of an addendum.

- Answers will be published on the [Dodge County website](#)
- AND on [DemandStar](#) website

6. RFQ Due Date - February 24, 2026 at 11:00 am

Responses are due to Dodge County Purchasing Office no later than 11:00 am on February 24, 2026. Prospective vendors can submit quotes by email, hand delivery, or by mail via DHL, FedEx, UPS, USPS as outlined below.

Emailed Project Information:

- Email to: tsteinbach@co.dodge.wi.us
- Must be clearly marked in the subject line with “RFQ # 3005-2026 - Four (4) - 1030 gallon Wedge Style Brine Tanks Manufactured by United Plastic Fabrication (UPF)”
- Attach a file in your email including all required documents as referenced in Section 7 of this project document.

Hand Delivered or mailed quotes must include the following items:

- Must be in a Sealed envelope
- Must be clearly marked with “RFQ # 3005-2026 - Four (4) - 1030 gallon Wedge Style Brine Tanks Manufactured by United Plastic Fabrication (UPF)” on the outside of a sealed envelope or box in the lower left-hand corner.
- Include all required documents as referenced in Section 7 of this project document.
- The following information must be clearly marked on the front of the envelope/shipping package:

Name & Address of Bidder
Due Date of Quote
Quote Number & Title

The following sample mailing label is provided here for your convenience:

Sample Mailing Label	From: _____ _____ _____
	To: Dodge County Highway Department 211 E Center St. Juneau, WI 53039
	<u>SEALED RFQ</u> RFQ # 3005-2026– Four (4) - 1030 gallon Wedge Style Brine Tanks Manufactured by United Plastic Fabrication (UPF) Due Date: February 24, 2026 at 11:00 am

7. RFQ Format & Submission Requirements

Any deviation from these requirements may result in the quote being considered non-responsive, thus eliminating the Vendor from consideration. The Quote Submission must include the following completed attachments: **Failure to provide all attachments listed below may result in the automatic rejection of the quote.**

- **Attachment A – Specifications/Drawings**
- **Attachment B - Warranties**
- **Attachment C – Addenda Acknowledgement**
- **Attachment D – Cost Sheet**

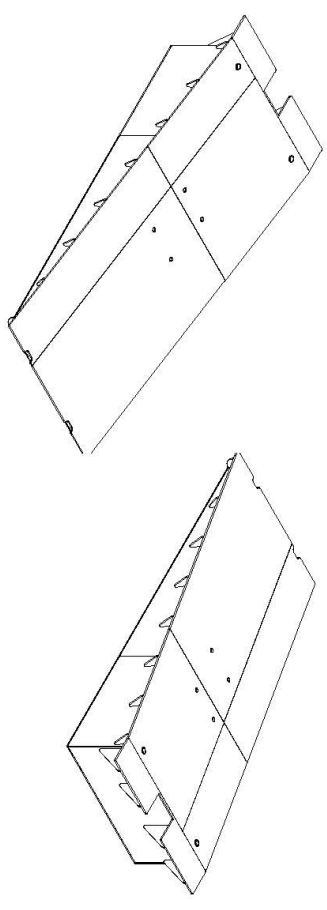
ATTACHMENT A
Specifications / Drawings:

Vendor to provide four (4) 1030 gallon Wedge Style Brine Tanks manufactured by United Plastic Fabrication (UPF) as per the specifications that follow:

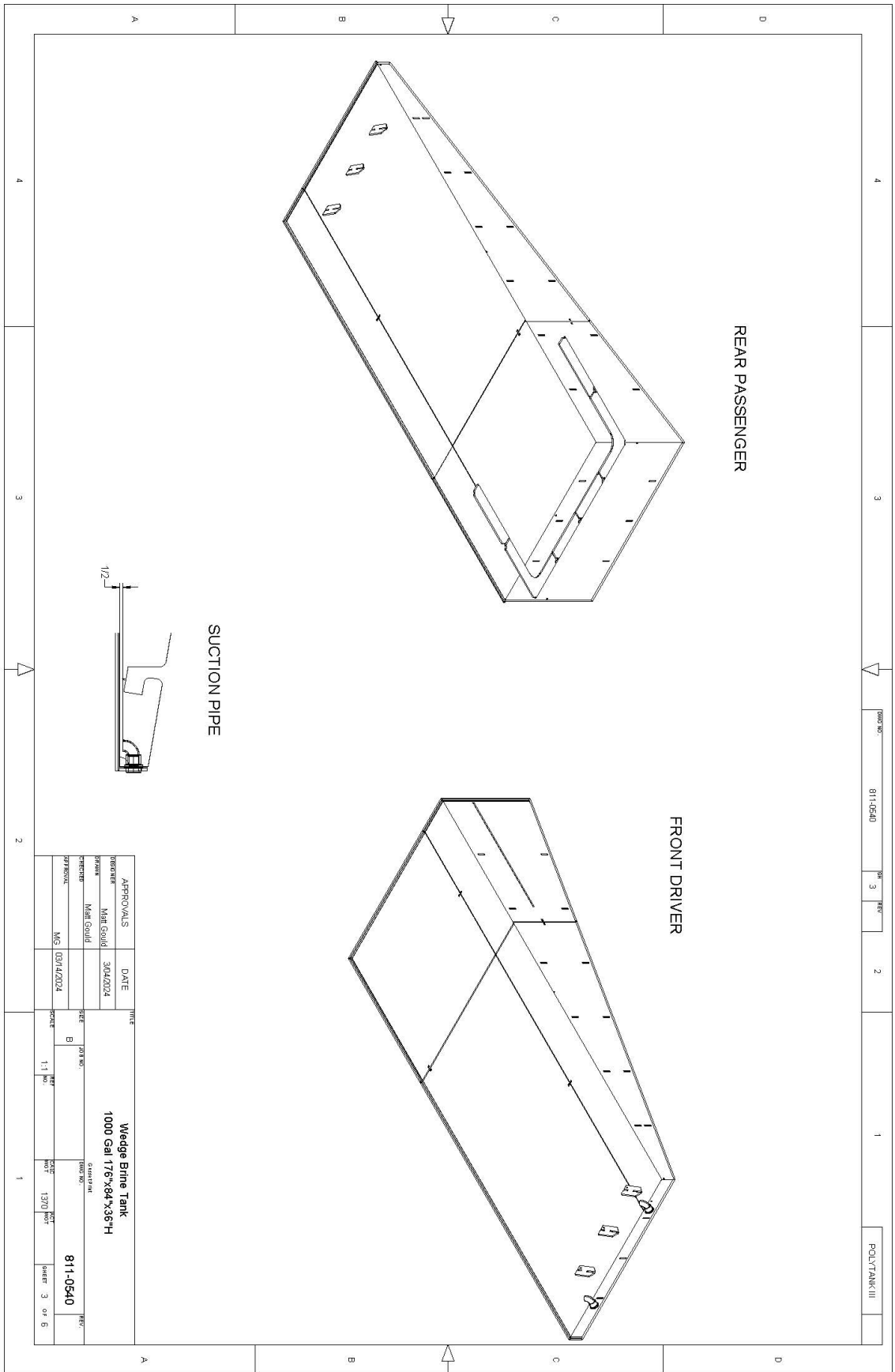
ITEM	PART NO.	DESCRIPTION	QTY	UNITS	REF NO.	REF QTY.
1	824-0836	ADAPTER, 1.5" NPTF SUTICON W/ DIP TUBE	2	ea	170-0836-000	2.00
2	160-1030-000	1 1/2" 90° ST ELBOW ENFIELD	2	ea	160-1030-000	2.00
8	162-2006-000	Z HALF COUPLING (NPTF) VENT	2	ea	162-2006-000	1.00

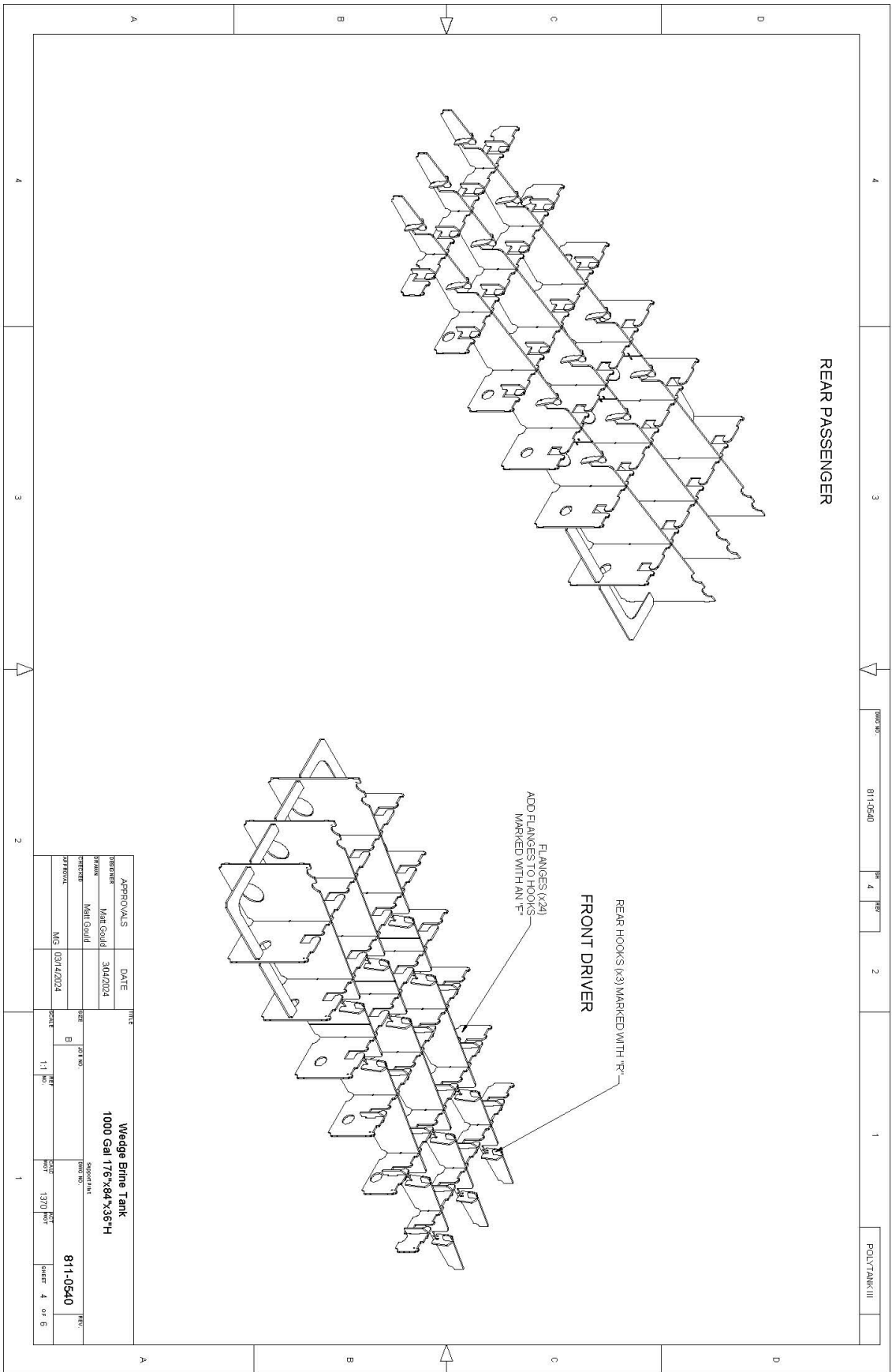
REVIEW AND INITIAL IF YOU ARE IN AGREEMENT ON THE FOLLOWING ISSUES:

- 1) EST. TANK CAPACITY IS 1024 USG. PLEASE NOTE THAT UPF RECOMMENDS THAT THE CALCULATED VOLUME BE AT LEAST 101% OF THE RATED CAPACITY TO ENSURE THAT THE CERTIFIED CAPACITY WILL BE MET. TANK VOLUMES CALCULATED LESS THAN 101% OF THE RATED CAPACITY CAN NOT BE GUARANTEED TO MEET OR EXCEED THE RATED CAPACITY.
- 2) TANK TO BE MANUFACTURED OUT OF BLACK-SMOOTH MATERIAL.
- 3) ALL EXTERNAL FEATURES MOUNTED BY THE OEM OR CUSTOMER MUST BE CHECKED FOR INTERFERENCE. UPF IS UNABLE IN MOST CASES TO MAKE ANY DETERMINATION OR RECOMMENDATION REGARDING SUCH ISSUES. APPROVAL OF THIS DRAWING WILL SERVE AS VERIFICATION THAT AN EXTERNAL INTERFERENCE DOES NOT EXIST.

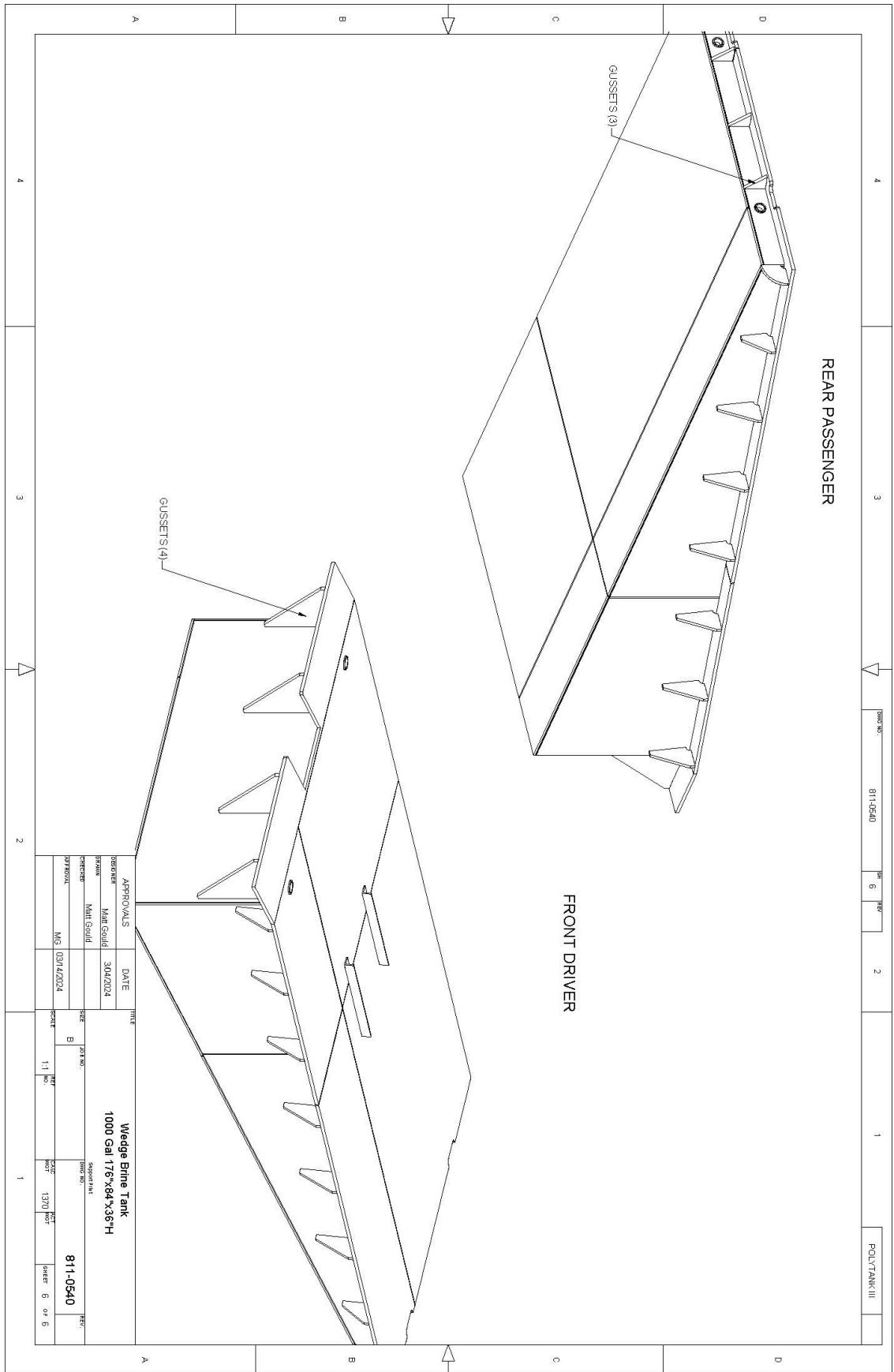


MATERIAL: P12Z-BUSM1 FINISH: WEDGE STYLE TANK TYPE: 1024 TANK STAYS: 3 (3/16" DIA. TUBES)		THIS DRAWING IS THE PROPERTY OF UPG. IT IS TO BE USED ONLY FOR THE PROJECT AND SITE SPECIFICALLY IDENTIFIED HEREIN. IT IS NOT TO BE REPRODUCED, COPIED, OR TRANSMITTED IN ANY FORM OR BY ANY MEANS, ELECTRONIC OR MECHANICAL, INCLUDING PHOTOCOPYING, RECORDING, OR BY ANY INFORMATION STORAGE AND RETRIEVAL SYSTEM, WITHOUT THE WRITTEN PERMISSION OF UPG.		TANK TO BE BUILT TO CURRENT UPF MANUFACTURING STANDARDS		ADDITIONAL UPF STANDARDS APPLICABLE TO THIS TANK:		UPG DRAWING NO.		TITLE:	
APPROVED FOR CONSTRUCTION WITH THE CONDITIONS LISTED ABOVE		UNLESS OTHERWISE SPECIFIED DIMENSIONS ARE IN INCHES. TOLERANCES ARE AT AMBIENT TEMP. AT THE TIME OF MFG. DECIMAL .XX = ± .030 DECIMAL .XXX = ± .006		APPROVALS:		DATE:		UPG		DODGE CO	
APPROVED BY:		MFG:		APPROVED BY:		DATE:		UPG		DODGE CO	
APPROVED BY:		MFG:		APPROVED BY:		DATE:		UPG		DODGE CO	
APPROVED BY:		MFG:		APPROVED BY:		DATE:		UPG		DODGE CO	
APPROVED BY:		MFG:		APPROVED BY:		DATE:		UPG		DODGE CO	
APPROVED BY:		MFG:		APPROVED BY:		DATE:		UPG		DODGE CO	
APPROVED BY:		MFG:		APPROVED BY:		DATE:		UPG		DODGE CO	
APPROVED BY:		MFG:		APPROVED BY:		DATE:		UPG		DODGE CO	
APPROVED BY:		MFG:		APPROVED BY:		DATE:		UPG		DODGE CO	
APPROVED BY:		MFG:		APPROVED BY:		DATE:		UPG		DODGE CO	
APPROVED BY:		MFG:		APPROVED BY:		DATE:		UPG		DODGE CO	
APPROVED BY:		MFG:		APPROVED BY:		DATE:		UPG		DODGE CO	
APPROVED BY:		MFG:		APPROVED BY:		DATE:		UPG		DODGE CO	
APPROVED BY:		MFG:		APPROVED BY:		DATE:		UPG		DODGE CO	
APPROVED BY:		MFG:		APPROVED BY:		DATE:		UPG		DODGE CO	
APPROVED BY:		MFG:		APPROVED BY:		DATE:		UPG		DODGE CO	
APPROVED BY:		MFG:		APPROVED BY:		DATE:		UPG		DODGE CO	
APPROVED BY:		MFG:		APPROVED BY:		DATE:		UPG		DODGE CO	
APPROVED BY:		MFG:		APPROVED BY:		DATE:		UPG		DODGE CO	
APPROVED BY:		MFG:		APPROVED BY:		DATE:		UPG		DODGE CO	
APPROVED BY:		MFG:		APPROVED BY:		DATE:		UPG		DODGE CO	
APPROVED BY:		MFG:		APPROVED BY:		DATE:		UPG		DODGE CO	
APPROVED BY:		MFG:		APPROVED BY:		DATE:		UPG		DODGE CO	
APPROVED BY:		MFG:		APPROVED BY:		DATE:		UPG		DODGE CO	
APPROVED BY:		MFG:		APPROVED BY:		DATE:		UPG		DODGE CO	
APPROVED BY:		MFG:		APPROVED BY:		DATE:		UPG		DODGE CO	
APPROVED BY:		MFG:		APPROVED BY:		DATE:		UPG		DODGE CO	
APPROVED BY:		MFG:		APPROVED BY:		DATE:		UPG		DODGE CO	
APPROVED BY:		MFG:		APPROVED BY:		DATE:		UPG		DODGE CO	
APPROVED BY:		MFG:		APPROVED BY:		DATE:		UPG		DODGE CO	
APPROVED BY:		MFG:		APPROVED BY:		DATE:		UPG		DODGE CO	
APPROVED BY:		MFG:		APPROVED BY:		DATE:		UPG		DODGE CO	
APPROVED BY:		MFG:		APPROVED BY:		DATE:		UPG		DODGE CO	
APPROVED BY:		MFG:		APPROVED BY:		DATE:		UPG		DODGE CO	
APPROVED BY:		MFG:		APPROVED BY:		DATE:		UPG		DODGE CO	
APPROVED BY:		MFG:		APPROVED BY:		DATE:		UPG		DODGE CO	
APPROVED BY:		MFG:		APPROVED BY:		DATE:		UPG		DODGE CO	
APPROVED BY:		MFG:		APPROVED BY:		DATE:		UPG		DODGE CO	
APPROVED BY:		MFG:		APPROVED BY:		DATE:		UPG		DODGE CO	
APPROVED BY:		MFG:		APPROVED BY:		DATE:		UPG		DODGE CO	
APPROVED BY:		MFG:		APPROVED BY:		DATE:		UPG		DODGE CO	
APPROVED BY:		MFG:		APPROVED BY:		DATE:		UPG		DODGE CO	
APPROVED BY:		MFG:		APPROVED BY:		DATE:		UPG		DODGE CO	
APPROVED BY:		MFG:		APPROVED BY:		DATE:		UPG		DODGE CO	
APPROVED BY:		MFG:		APPROVED BY:		DATE:		UPG		DODGE CO	
APPROVED BY:		MFG:		APPROVED BY:		DATE:		UPG		DODGE CO	
APPROVED BY:		MFG:		APPROVED BY:		DATE:		UPG		DODGE CO	
APPROVED BY:		MFG:		APPROVED BY:		DATE:		UPG		DODGE CO	
APPROVED BY:		MFG:		APPROVED BY:		DATE:		UPG		DODGE CO	
APPROVED BY:		MFG:		APPROVED BY:		DATE:		UPG		DODGE CO	
APPROVED BY:		MFG:		APPROVED BY:		DATE:		UPG		DODGE CO	
APPROVED BY:		MFG:		APPROVED BY:		DATE:		UPG		DODGE CO	
APPROVED BY:		MFG:		APPROVED BY:		DATE:		UPG		DODGE CO	
APPROVED BY:		MFG:		APPROVED BY:		DATE:		UPG		DODGE CO	
APPROVED BY:		MFG:		APPROVED BY:		DATE:		UPG		DODGE CO	
APPROVED BY:		MFG:		APPROVED BY:		DATE:		UPG		DODGE CO	
APPROVED BY:		MFG:		APPROVED BY:		DATE:		UPG		DODGE CO	
APPROVED BY:		MFG:		APPROVED BY:		DATE:		UPG		DODGE CO	
APPROVED BY:		MFG:		APPROVED BY:		DATE:		UPG		DODGE CO	
APPROVED BY:		MFG:		APPROVED BY:		DATE:		UPG		DODGE CO	
APPROVED BY:		MFG:		APPROVED BY:		DATE:		UPG		DODGE CO	
APPROVED BY:		MFG:		APPROVED BY:		DATE:		UPG		DODGE CO	
APPROVED BY:		MFG:		APPROVED BY:		DATE:		UPG		DODGE CO	
APPROVED BY:		MFG:		APPROVED BY:		DATE:		UPG		DODGE CO	
APPROVED BY:		MFG:		APPROVED BY:		DATE:		UPG		DODGE CO	
APPROVED BY:		MFG:		APPROVED BY:		DATE:		UPG		DODGE CO	
APPROVED BY:		MFG:		APPROVED BY:		DATE:		UPG		DODGE CO	
APPROVED BY:		MFG:		APPROVED BY:		DATE:		UPG		DODGE CO	
APPROVED BY:		MFG:		APPROVED BY:		DATE:		UPG		DODGE CO	
APPROVED BY:		MFG:		APPROVED BY:		DATE:		UPG		DODGE CO	
APPROVED BY:		MFG:		APPROVED BY:		DATE:		UPG		DODGE CO	
APPROVED BY:		MFG:		APPROVED BY:		DATE:		UPG		DODGE CO	
APPROVED BY:		MFG:		APPROVED BY:		DATE:		UPG		DODGE CO	
APPROVED BY:		MFG:		APPROVED BY:		DATE:		UPG		DODGE CO	
APPROVED BY:		MFG:		APPROVED BY:		DATE:		UPG		DODGE CO	
APPROVED BY:		MFG:		APPROVED BY:		DATE:		UPG		DODGE CO	
APPROVED BY:		MFG:		APPROVED BY:		DATE:		UPG		DODGE CO	
APPROVED BY:		MFG:		APPROVED BY:		DATE:		UPG		DODGE CO	
APPROVED BY:		MFG:		APPROVED BY:		DATE:		UPG		DODGE CO	
APPROVED BY:		MFG:		APPROVED BY:		DATE:		UPG		DODGE CO	
APPROVED BY:		MFG:		APPROVED BY:		DATE:		UPG		DODGE CO	
APPROVED BY:		MFG:		APPROVED BY:		DATE:		UPG		DODGE CO	
APPROVED BY:		MFG:		APPROVED BY:		DATE:		UPG		DODGE CO	
APPROVED BY:		MFG:		APPROVED BY:		DATE:		UPG		DODGE CO	
APPROVED BY:		MFG:		APPROVED BY:		DATE:		UPG		DODGE CO	
APPROVED BY:		MFG:		APPROVED BY:		DATE:		UPG		DODGE CO	
APPROVED BY:		MFG:		APPROVED BY:		DATE:		UPG		DODGE CO	
APPROVED BY:		MFG:		APPROVED BY:		DATE:		UPG		DODGE CO	
APPROVED BY:		MFG:		APPROVED BY:		DATE:		UPG		DODGE CO	
APPROVED BY:		MFG:		APPROVED BY:		DATE:		UPG		DODGE CO	
APPROVED BY:		MFG:		APPROVED BY:		DATE:		UPG		DODGE CO	
APPROVED BY:		MFG:		APPROVED BY:		DATE:		UPG		DODGE CO	
APPROVED BY:		MFG:		APPROVED BY:		DATE:		UPG		DODGE CO	
APPROVED BY:		MFG:		APPROVED BY:		DATE:		UPG		DODGE CO	
APPROVED BY:		MFG:		APPROVED BY:		DATE:		UPG		DODGE CO	
APPROVED BY:		MFG:		APPROVED BY:		DATE:		UPG		DODGE CO	
APPROVED BY:		MFG:		APPROVED BY:		DATE:		UPG		DODGE CO	
APPROVED BY:		MFG:		APPROVED BY:		DATE:		UPG		DODGE CO	
APPROVED BY:		MFG:		APPROVED BY:		DATE:		UPG		DODGE CO	
APPROVED BY:		MFG:		APPROVED BY:		DATE:		UPG		DODGE CO	
APPROVED BY:		MFG:		APPROVED BY:		DATE:		UPG		DODGE CO	
APPROVED BY:		MFG:		APPROVED BY:		DATE:		UPG		DODGE CO	
APPROVED BY:		MFG:		APPROVED BY:		DATE:		UPG		DODGE CO	
APPROVED BY:		MFG:		APPROVED BY:		DATE:		UPG		DODGE CO	
APPROVED BY:		MFG:		APPROVED BY:		DATE:		UPG		DODGE CO	
APPROVED BY:		MFG:		APPROVED BY:		DATE:		UPG		DODGE CO	
APPROVED BY:		MFG:		APPROVED BY:		DATE:		UPG		DODGE CO	
APPROVED BY:		MFG:		APPROVED BY:		DATE:					









ATTACHMENT C
Addendum Acknowledgement

Complete this page and include it with your response to this request.

The undersigned acknowledges receipt of the following addendum(s) by checking the box(es) below:

- | | |
|---|--|
| 1 <input type="checkbox"/> Dated _____ | 4 <input type="checkbox"/> Dated _____ |
| 2 <input type="checkbox"/> Dated _____ | 5 <input type="checkbox"/> Dated _____ |
| 3 <input type="checkbox"/> Dated: _____ | 6 <input type="checkbox"/> Dated _____ |

Additional Addenda should be written here:

If no addenda were issued, please state below, complete the form, and submit with the quote package.

I/we further certify that no agreement has been entered into to prevent competition for said work and that I/we carefully examined the plans, specifications, and all other project documents.

Company Name

Representative Signature

