



Galloway **FORWARD** 

Dear Supporter,

Our school stands at a moment of great change and tremendous promise. As we seek to build a new Upper Learning building, it strikes me that, more than a building, we are seeking to preserve and enhance one of America's great educations.

This unprecedented investment in our campus and students will ensure Galloway remains at the vanguard of progressive education. The new Upper Learning building will allow for what we do best: joyful, experiential, inquiry-based learning, grounded in self-discovery and high expectations. It will also allow our school to meet the needs of today's students by attracting and retaining the best faculty and ensuring that our students have a safe, welcoming campus on which to grow up.

I cannot wait to watch students experiment in new science labs, linger in the courtyard, debate in the communal spaces, deeply think in the library, and find the courage to ask hard questions and try new things in every corner of the building. The building itself will be beautiful and address overdue needs, but the energy and passion that fills it will ensure that Galloway continues to be a model of what education can be.

I invite you to join us in making the next chapter of Galloway as special and ambitious as our first 57 years. Your investment will deliver a campus - and an education - worthy of Elliott Galloway's vision. It will also validate Mr. Galloway's reflection about what powers our school:

*"Nobody has ever seen the spirit that sustains this institution; it cannot be weighed, or measured, or analyzed any more than justice can be measured, or mercy, or truth."*

Let this spirit sustain and grow Galloway to new heights.



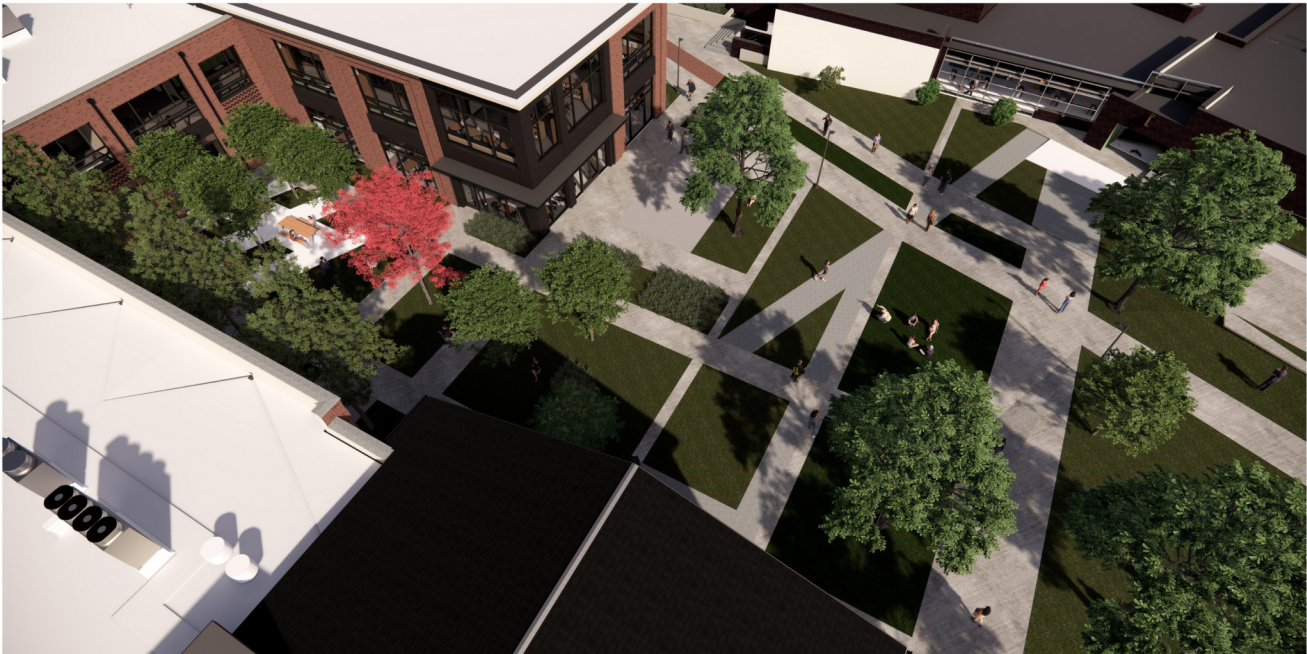
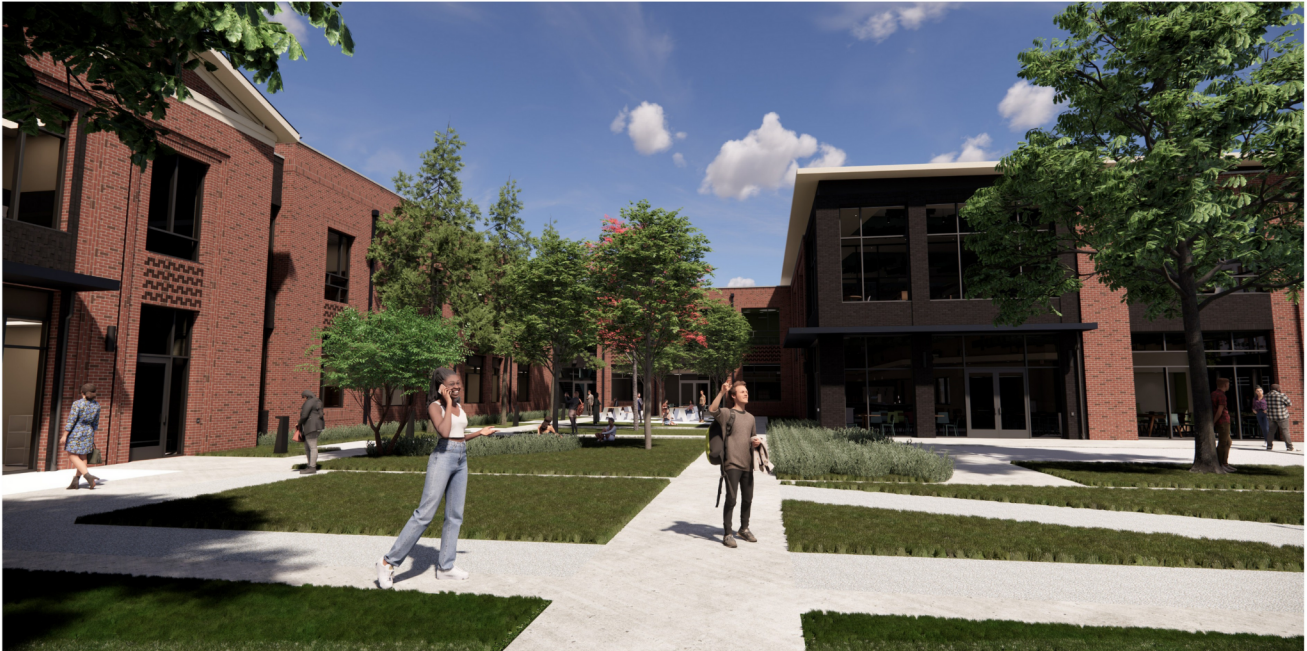
A.F.

Amir Farokhi '96  
Head of School  
The Galloway School





# THE COURTYARD



## About the Courtyard

*The heartbeat of campus, the main Courtyard is a generous green space designed for gathering, learning, and belonging. Fully enclosed and safe, it sits at the center of our academic campus, creating a daily point of connection for students across all levels. Here, learning extends beyond classroom walls as students enjoy fresh air, nature, and the beauty of Chastain Park woven into their everyday experience. This expanded courtyard is large enough to welcome graduation back home to campus, restoring a meaningful tradition we once outgrew, and it will serve as the setting for countless celebrations, ceremonies, and moments of community. More than a passageway or pause, the courtyard is a living commons that reflects who we are and how we come together.*



# MAIN DINING HALL



## About the Main Dining Hall

*The Main Dining Hall is designed to nourish students in Middle and Upper learning with a space that brings people together with ease. Flexible by design, the hall easily transforms from a daily dining space into a meeting and shared moments space beyond mealtime. A state-of-the-art kitchen supports healthier, more sustainable operations, while a variety of seating options invites students and faculty to choose how they connect, collaborate, and recharge.*



# LIBRARY



## About the Library

*The Library is thoughtfully designed to support both quiet study and meaningful connection, honoring the balance between focus and community that defines deep learning. In an era dominated by screens, this is a true library filled with books, inviting students to slow down, explore ideas, and engage with knowledge in a tangible way. Like the beloved library in the Gresham building, it will once again serve as a central point on campus, a place where students naturally come together throughout the day. Substantive, comfortable furnishings signal that this is a space meant for reflection, curiosity, and sustained thought.*



# TERRACE



## About the Terrace

The second-floor Terrace offers an open-air space with sweeping views of the Chastain Park golf course and the Buckhead skyline. Designed for both events and everyday use, the terrace invites the community to step outside, connect with one another, and experience Galloway from a fresh perspective.



# WELCOME CENTER



## About the Gordon Mathis Welcome Center

The Gordon Mathis Welcome Center is the main entry point for all guests, offering a warm and gracious entrance to campus. Named in honor of long time faculty member Gordon Mathis, it recognizes more than forty years of dedicated service to Galloway and the lasting impact of his work.

# OUTDOOR DINING PLAZA



## About the Outdoor Dining Plaza

*The Outdoor Dining Plaza extends the cafe into a welcoming open-air patio. This flexible space allows students and faculty to enjoy dining outdoors, encouraging conversation, community, and a natural flow between indoor and outdoor campus life.*

# EARLY LEARNING CAFE



## About the Early Learning Cafe

*The Early Learning Cafe is a dining space for PreK3 through fourth-grade students, thoughtfully designed just for them. It allows younger learners to be part of campus life while enjoying meals prepared in the state-of-the-art kitchen, fostering inclusion, comfort, and a sense of belonging from an early age.*



# READING ROOM



## About the Reading Room

The Reading Room is a quiet study space located just off the main library. Designed for focus and calm, it offers students a peaceful retreat for sustained reading, reflection, and independent work.



# STUDENT LIFE COMMONS



## About the Student Life Commons

The Student Life Commons is a space designed exclusively for students to enjoy during free periods and between classes. Comfortable and inviting, it offers a soft place to land for socializing, resting, and recharging, creating a sense of ownership and belonging that is just for them.

# CONFERENCE ROOM



## About the Felicia McCrary Conference Room

*Named in honor of the beloved Felicia McCrary, the Conference Room is a space for collaboration and thoughtful conversation. The McCrary conference room will foster discussion grounded in the care and commitment to the Galloway spirit Felicia embodied.*



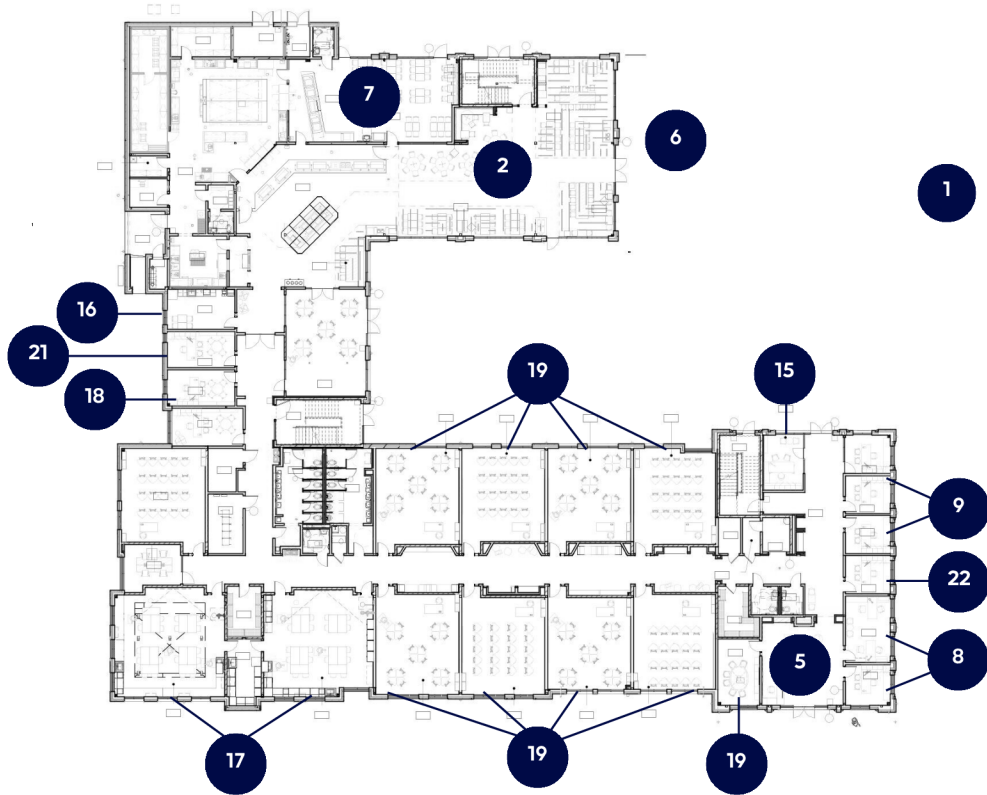
# LEARNING SPACES



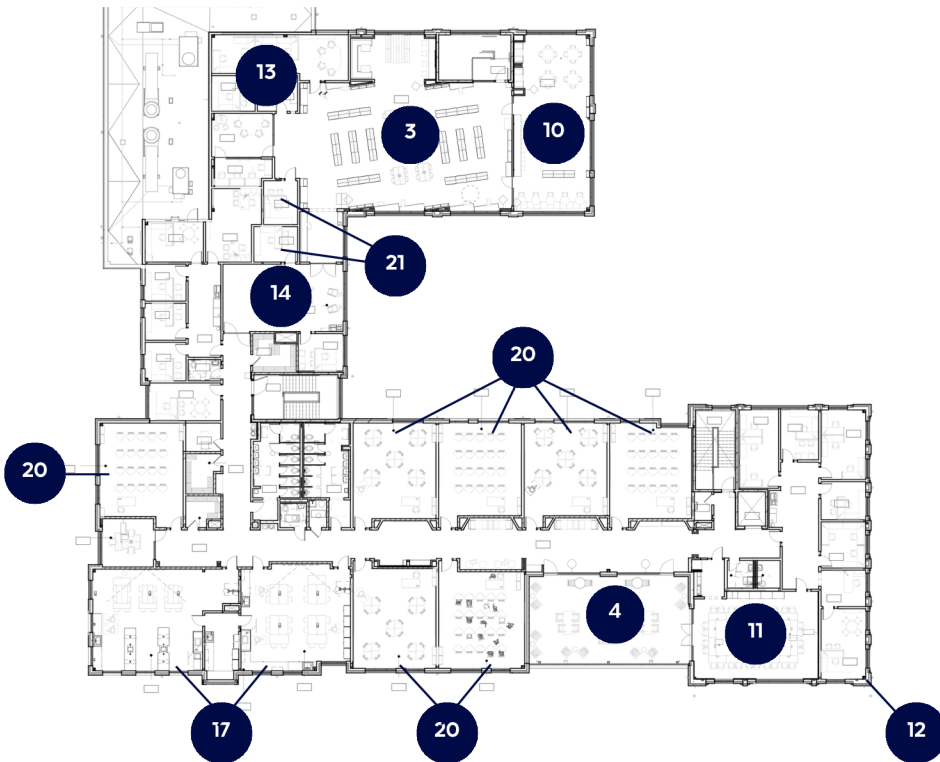
## About the Classrooms and Science Labs

*In true Galloway spirit, our new classrooms are flexible learning environments designed to support experiential learning and rich discussion. State-of-the-art science labs will extend this philosophy, giving students the tools and space to question, experiment, and explore. Together, these spaces allow Galloway to continue fostering innovative learning rooted in curiosity.*

# FIRST FLOOR



# SECOND FLOOR



# Campus Transformation

## NAMING OPPORTUNITIES

1	Large Courtyard	\$1.5M
2	Main Cafe	\$1M
3	Main Library	\$1M
4	Terrace	\$750,000
5	Gordon Mathis Welcome Center	\$750,000
6	Outdoor Dining Plaza	\$500,000
7	Early Learning Cafe	\$500,000
8	Admissions Office Suite	\$300,000
9	College Counseling Suite	\$300,000
10	Main Library Reading Room	\$250,000
11	Felicia McCrary Conference Room	\$250,000
12	Head of School Office	\$250,000
<i>Not Pictured</i>	Main Entrance Gate	\$250,000
13	Center for Teaching and Learning Suite	\$200,000
14	Student Life Commons	\$150,000
15	Upper Learning Principal Office	\$150,000
16	Upper Learning Faculty Lounge	\$150,000
17	Science Labs	\$125,000
18	Chief Diversity, Equity, and Inclusion Officer Office	\$100,000
19	First Floor Conference Room	\$100,000
19	First Floor Upper Learning Classroom	\$75,000
20	Second Floor Upper Learning Classroom	\$75,000
<i>Not Pictured</i>	Elliott's Circle Sculpture Addition and Expansion	\$75,000
21	Assistant Head of School Office	\$50,000
22	Upper Learning Counselor Office	\$50,000
<i>Not Pictured</i>	Front Lawn Porch Swings	\$25,000



# LIBRARY



## **Library**

*The Early Learning Library has been reconfigured to make better use of space and more fully nurture the library curriculum. Designed to be inviting and developmentally appropriate, it allows young learners to explore books, ideas, and inquiry in ways that are both joyful and purposeful.*

# WELCOME CENTER



## **Early Learning Welcome Center**

*The Early Learning Welcome Center is a reimagined space where students begin their day feeling welcomed, known, and supported. Designed to enhance daily security while also warmly inviting parents and guests, it creates a thoughtful and reassuring first point of connection for our youngest learners and their families.*

# LEARNING SUPPORT



## **Learning Support**

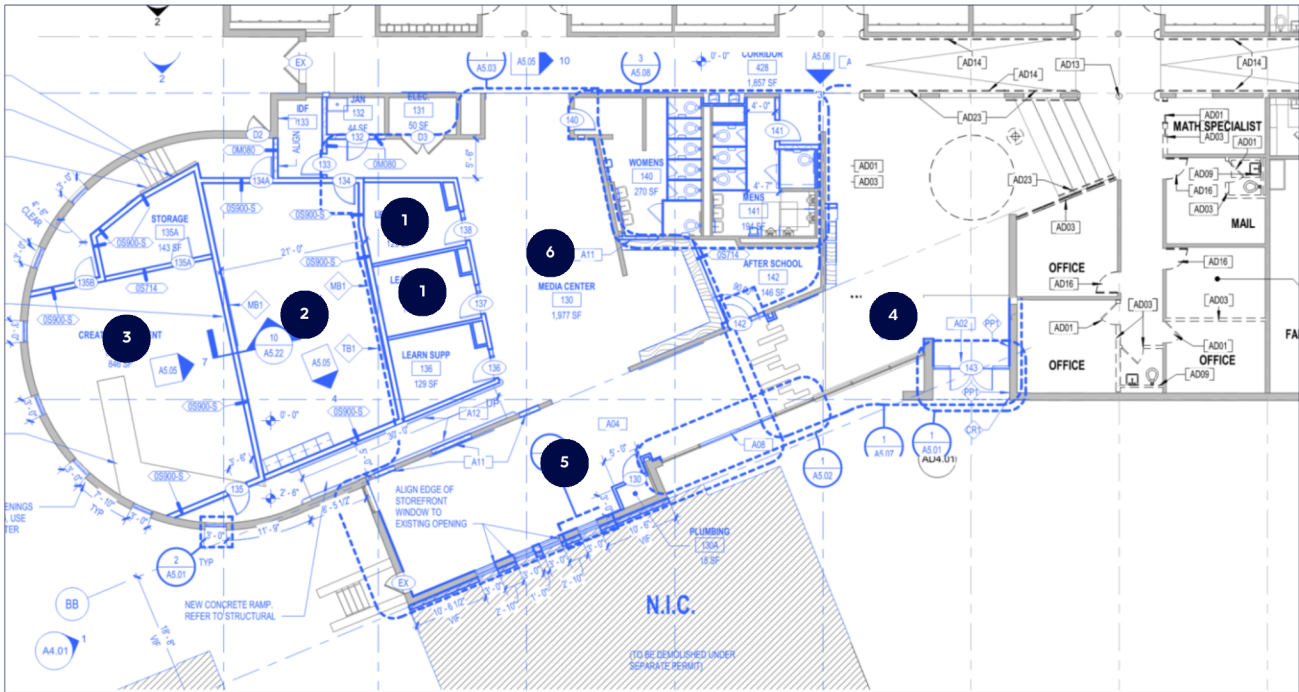
*Three dedicated learning support rooms provide focused, thoughtfully designed environments to better meet students where they are. These spaces allow for individualized attention, flexibility, and care, reinforcing our commitment to supporting every learner's growth and success.*

# MEDIA CENTER



## **Early Learning Library**

*The Early Learning Library is a refreshed, cozy space designed with young learners in mind. Thoughtfully scaled and inviting, it ensures that early experiences with reading and research remain joyful, nurturing curiosity and a lifelong love of learning.*



- 

1 Learning Support Expansion
- 

3 Performing Arts Classroom
- 

5 Library
- 

2 Spanish Classroom
- 

4 Welcome Center
- 

6 Media Center

# PLAYGROUND



## Early Learning Playground

The new playground is a space designed with intention and care. Purposeful play equipment supports the body, mind, and spirit, recognizing the vital role outdoor play has in the development, creativity, and well being of young minds.

# Sims Building

## NAMING OPPORTUNITIES

Early Learning Playground \$750,000

Library \$500,000

Media Center \$500,000

Learning Support Wing \$400,000

Performing Arts Studio \$400,000

Spanish Classroom \$400,000

Welcome Center \$200,000





The exterior of the new Upper Learning Building will feature a four-column, neoclassical brick façade crowned by an oval transom window. This design pays homage to the historic Gresham Building that once stood on the site, while incorporating materials and architectural details that harmonize with the surrounding Chastain Park landscape.

Select architectural elements from the original Gresham Building will be preserved and thoughtfully integrated into the interior spaces, creating a meaningful connection between Galloway's past and its future.

