



# ECFE

For ages 0 to 5 and their caregivers!

## Early Childhood Family Education!

### What's Inside?

- Pg 3.....Class Schedule
- Pg 4.....NEW Events!
- Pg 7.....Drop In and Play
- Pg 9.....Baby Shower Events
- Pg 12.....Toy Lending Library
- Pg 13.....Advisory Council

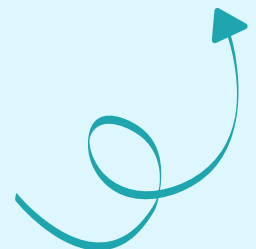


**Registration begins on Tuesday, December 9, 2025 at 8:00am!**



To register or learn more:

- Call 651-487-4378
- Visit [isd623.org/ECFE](http://isd623.org/ECFE)
- Scan this QR code!





# Winter/Spring 2026 Schedule

For January 12 – May 15, 2026!

Monday	Tuesday	Wednesday	Thursday	Friday
<b>Toddlers</b> <b>9:00 – 10:15 a.m.</b> <b>Feb 23 – May 11</b> Ages 9 – 24 months Separating Class #101, Fee: B Sibling Care #101a	<b>Drop In and Play</b> <b>8:45 – 10:00 a.m.</b> <b>Jan 13 – May 12</b> Ages 0 – 5 years FREE No registration	<b>Drop In and Play</b> <b>8:45 – 10:00 a.m.</b> <b>Jan 14 – May 13</b> Ages 0 – 5 years FREE No registration	<b>Family Fun!</b> <b>9:15 – 10:15 a.m.</b> <b>Jan 15 – May 14</b> Ages 0 – 5 years Non-Separating Class #404, Fee: A	<b>Twos</b> <b>9:00 – 10:30 a.m.</b> <b>Jan 16 – May 15</b> Ages 24 – 36 months Separating Class #202, Fee: B
<b>Twos</b> <b>10:30 a.m. – 12:00 p.m.</b> <b>Feb 23 – May 11</b> Ages 24 – 36 months Separating Class #201, Fee: B Sibling Care #201a	<b>Twos and Threes</b> <b>10:45 a.m. – 12:15 p.m.</b> <b>Jan 13 – Mar 3</b> Ages 30 – 48 months Separating Class #203, Fee: C	<b>Toddlers and Twos</b> <b>10:45 a.m. – 12:15 p.m.</b> <b>Jan 14 – May 13</b> Ages 15 – 30 months Gradual-Separating Class #104, Fee: A Sibling Care #104a	<b>Little Scientist: Sensory Exploration!</b> <b>10:45 a.m. – 12:00 p.m.</b> <b>Jan 15 – Feb 5</b> Ages 2 – 5 years Non-Separating Class #301, Fee: D	<b>Family Class</b> <b>10:45 a.m. – 12:15 p.m.</b> <b>Jan 16 – May 15</b> Ages 0 – 5 years Separating Class #405, Fee: B
<b>You and Me Baby</b> <b>3:30 – 4:45 p.m.</b> <b>Jan 12 – Mar 16</b> Ages 0 – 9 months Non-Separating Class #001, FREE	<b>Grandparents</b> <b>10:45 a.m. – 12:15 p.m.</b> <b>Mar 17 – May 12</b> Ages 0 – 5 years Separating Class #401, Fee: C	<b>No Drama Discipline – Online Zoom</b> <b>9:00 – 10:15 a.m.</b> <b>Jan 14 – Feb 18</b> Parents Only Class #407, Fee: D	<b>Art Adventures</b> <b>10:45 a.m. – 12:00 p.m.</b> <b>Feb 12 – Mar 5</b> Ages 2 – 5 years Non-Separating Class #302, Fee: D	
<b>Dad and Me</b> <b>3:30 – 4:45 p.m.</b> <b>Mar 23 – May 11</b> Ages 0 – 5 years Separating Class #406, Fee: C	<b>Ages:</b> Child must be the age listed by the first day of class.  <b>No Class:</b> January 19 January 30 February 2 February 16 March 6 – 13 March 20 April 3 April 17 May 8	<b>Caregiver &amp; Infant Yoga</b> <b>9:00 – 10:15 a.m.</b> <b>Feb 25 – Apr 1</b> Ages 0 – 10 months Non-Separating Class #004, D Sibling Care #004a	<b>Talk, Read and Play</b> <b>10:45 a.m. – 12:00 p.m.</b> <b>Mar 19 – Apr 9</b> Ages 2 – 5 years Non-Separating Class #303, Fee: D	<b>Saturday</b> <b>Drop In and Play</b> <b>10:15 – 11:30 a.m.</b> <b>Jan 17 – Apr 11</b> Ages 0 – 5 years FREE No registration
<b>Family Class</b> <b>5:15 – 6:45 p.m.</b> <b>Jan 12 – Mar 16</b> Ages 0 – 5 years Separating Class #403, Fee: D		<b>Incredible Infants</b> <b>9:00 – 10:15 a.m.</b> <b>Apr 8 – May 13</b> Ages 0 – 9 months Non-Separating Class #002, FREE Sibling Care #002a	<b>The Great Paper Adventure</b> <b>10:45 a.m. – 12:00 p.m.</b> <b>Apr 16 – May 7</b> Ages 2 – 5 years Non-Separating Class #304, Fee: D	
<b>Learn and Play with My Baby</b> <b>5:30 – 6:45 p.m.</b> <b>Mar 23 – May 11</b> Ages 3 – 11 months Non-Separating Class #005, FREE		<b>Movers and Shakers!</b> <b>10:45 a.m. – 12:00 p.m.</b> <b>Jan 14 – Mar 4</b> Ages 6 – 18 months Non-Separating Class #106, Fee: C	<b>Class Locations:</b> <b>Early Childhood Center at Anpétu Téca</b> 1910 County Road B West, Roseville <b>Early Childhood Center at Parkview</b> 701 County Road B West, Roseville <b>Prince of Peace Church</b> 2561 Victoria St, Roseville <b>Online with Zoom</b>	
		<b>Toddlers</b> <b>10:45 a.m. – 12:00 p.m.</b> <b>Mar 18 – May 13</b> Ages 12 – 24 months Non-Separating Class #105, Fee: C		

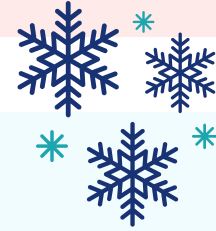
Register here!



**Roseville Area Schools**  
 Early Childhood Family Education

# NEW One-Time Events!

Winter/Spring 2026



## Make and Take: Snow Much Fun

In this one time specialty class, we will make winter theme things you can take home to use for play. You'll make a snowman craft, sensory play items, and snow globes. We will also play, read a winter book and enjoy time together.

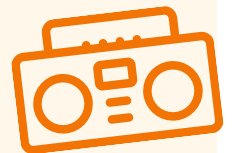


**Monday, January 12, 2026 | 10:00 - 11:30 a.m. | Ages 0 - 5 years**  
**Early Childhood Center at Parkview | Class #402 | Fee: E**



## Move and Groove!

Musical and movement activities that promote gross motor development and creativity is the focus of this one time class. Music, dancing, singing, and making an instrument will all be part of the fun to get us moving and grooving!



**Monday, January 26, 2026 | 10:00 - 11:30 a.m. | Ages 0 - 5 years**  
**Early Childhood Center at Parkview | Class #400 | Fee: E**



## Parenting Topic: Toilet Training Tips

This is a one time class for parents (children can attend childcare in the ECFE rooms). The parent educator will lead a discussion on toilet training. We'll review tips for successful toilet training and learn about how children show signs of readiness for toilet training. Bring your questions and join the discussion!



**Monday, February 9, 2026 | 10:00 - 11:30 a.m. | Ages 0 - 5 years**  
**Early Childhood Center at Parkview**  
**Parent/Caregiver Class #408, Childcare Class #408a | Fee: E**

# Class Descriptions

Learn more about our class offerings!

## **You and Me Baby (#001)**

For ages newborn – 9 months! Enjoy sensory activities, movement, and songs to support your child's brain development while also nurturing your parent-child relationship. Learn about parenting, child development, routines, and other topics of interest to the class participants. This is a non-separating class.

## **Incredible Infants (#002)**

This class is especially for new babies (0-9 months) and parents. There will be songs, sensory, and physical development activities to do with your baby! You will also meet other parents with new infants and discuss topics of interest to the group. This is a non-separating class.

## **Caregiver and Infant Yoga (#004)**

Join us in this non-separating yoga class, where you and your little one will have fun moving together, exploring sights, sounds, and movement. Crafted with postpartum-safe movements, it's just the right blend of relaxation and strength-building for your body. We will also be discussing some basics of infant growth and development, and helping you connect with a supportive community of new parents. Parent Educator Jessica has years of experience working with postpartum parents and families, helping them reconnect with their bodies through yoga and mindfulness.

## **Learn and Play with My Baby (#005)**

We'll explore all areas of development in this class, especially for children in their first year of life (and parents/caregivers). Each week, we will have activities to support a developmental area, such as physical, gross and fine motor, language, cognitive, social/ emotional and more! We will participate in activities with our infants and toddlers that support learning and growth in these areas and learn more about how parents and caregivers can support learning at home. This is a non-separating class.

## **Toddlers (#101, #105)**

Explore the classroom, sing songs, read books, enjoy creative and messy projects and more during this class just for toddlers and parents! Connect with other caregivers on topics such as language acquisition, routines, nutrition, the importance of play, supporting big emotions, child development and more. #101 is a separating class, #105 is a non-separating class.

## **Movers and Shakers (#106)**

This class is for children (and parents/caregivers) who are getting ready to crawl, walk, move and shake! Join us for fun activities that support your child's physical development, including large and fine motor development. We'll also talk about ways to create a safe environment at home as our babies become mobile.

## **Toddlers and Twos (#104)**

Explore the classroom activities with your child and enjoy circle time with songs and books! Parents will meet for a discussion on a variety of topics relevant to this stage of growth and development. This is a gradual separating class.

## **Twos (#201, 202)**

You and your two-year-old will share time together enjoying painting, sensory activities, singing, playing with new toys and building creations! After circle time music and movement, the parent educator will lead discussions on topics such as sharing, independence, potty training, effective discipline techniques, social emotional development, and more! These are separating classes.

## **Twos and Threes (#203)**

This class is for older twos and three year olds. Explore the classroom activities with your child and enjoy circle time with songs and books! Parents will meet for a discussion on a variety of topics relevant to this stage of growth and development and transition to preschool age. This is a separating class.

## **Little Scientist: Sensory Exploration! (#301)**

Enjoy spending time with your child and experience a variety of messy sensory activities and interesting science experiments. Learn about ways that you can do sensory play at home. Please dress for the mess. This is a non-separating class.

## **Art Adventures (#302)**

Each week, you and your child will experiment with a variety of art materials. Join us to create, play and have fun! This is a non-separating class.

## **The Great Paper Adventure (#304)**

Join the fun as we learn about and experiment with paper: newspaper, tissue paper, wrapping paper, envelopes, coffee filters, paper plates, sticky notes, paper mache and more! During this class we will explore and do creative projects and activities as we learn: What can we do with paper? What different kinds of paper are there? How can we change paper?

**More classes on the next page!**

# Class Descriptions

Learn more about our class offerings!

## Talk, Read and Play (#303)

Each week, you and your child will experience a children's book by Mo Willems. We will have opportunities to create crafts, enjoy activities and play literacy games that support the theme of the book. This class will help lay the groundwork for a love of reading by participating in read-alouds of *Knuffle Bunny* and *Don't Let the Pigeon Drive the Bus* and more! This is a non-separating class.

## Grandparents Class (#401)

Connect with other grandparents and enjoy special time with your grandchild exploring the early childhood classroom activities. This is followed by a discussion on grandparenting in today's world. This is a separating class.

## Family Class (#403, #405)

You'll have time to spend with your children engaging in activities in the early childhood classrooms, followed by a discussion about common concerns, parenting ideas and strategies as we travel on this parenting adventure with families with children birth – age 5. This is a separating class.

## Family Fun! (#404)

Bring your family for creative activities, time together, and fun! This is a non-separating class.

## Dad and Me (#406)

We will focus on quality time playing with our children in this class for dads and father figures. We'll have fun playing, creating and enjoying time with our kids. Explore the joys and challenges of being a dad and learn from other dads during parent discussion.

## No-Drama Discipline (#407)

This parenting class is based on the book, *No Drama Discipline, The Whole-Brain Way to Calm the Chaos and Nurture Your Child's Developing Mind*, by Daniel J. Siegel and Tina Payne Bryson. You will learn about child brain development, ways to calmly connect with your child, setting clear and consistent limits, supports for handling tantrums, and how to stay focused on whole-brain parenting and discipline techniques. This is a parenting education only class offered on ZOOM.

# Parent Focus

Free parenting support and education!

Parents and caregivers of children **ages 3 through grade 3** are invited to our Parent Focus sessions - engaging, one-time presentations designed to support and empower you on your parenting journey! Come connect, learn, and grow with us.

Each session will highlight trending topics in parenting and child development, with insights from experienced parent educators and local community experts.

Best of all, sessions are **free to attend, and childcare is provided.**

Examples of past Parent Focus topics include:

- Infant and Child CPR
- Discipline Tools and Techniques
- Technology Safety
- Healthy Eating

Watch for more information on our Facebook page at [facebook.com/RosevilleECFE/](https://facebook.com/RosevilleECFE/).





# Class Styles

Choose the style that works best for your family!

## Separating Classes

- Parents and children interact and explore activities together for part of the class. This provides an opportunity to spend uninterrupted time with your child exploring games, creative activities, books, science, dramatic play and more!
- Parents meet in a separate classroom for about 45 minutes with a licensed parent educator to share experiences and discuss topics related to child development and parenting techniques.
- While parents meet for parent discussion, children participate in age-appropriate activities with a licensed early childhood teacher. Children are provided experiences which encourage social, emotional, physical and cognitive development.

## Gradual Separating Classes

- Child and caregiver will spend time together and practice spending time apart as children become comfortable with the space and develop trusting relationships with the teachers.
- We will practice separating beginning with just a few minutes and gradually increasing our time apart to 40 minutes.
- A licensed early childhood educator and parent educator will support both of you as you learn to separate.

## Non-Separating Classes

- Parents and children stay together in the classroom for the entire class.
- Discussion, sharing, and support take place within sight and sound of playing children.
- Parenting resources will be available.

## Parenting-Only Classes

- Parents will meet for a full hour discussing parenting topics.
- Children will experience educational activities in an early childhood environment during parent education time.
- Occasional options for virtual classes.

## Drop In & Play Classes

- No fee or registration needed.
- Come when you can and join the fun!
- Parent and caregiver support for exploring the learning environments, peer interactions, and answering caregiver questions.



# Baby Shower Events

For families with infants ages birth to 9 months!

Join the Roseville Area Schools Early Childhood Program for a free, fun event to celebrate you and your baby!

- ★ Free gifts and refreshments!
- ★ Meet other parents and our ECCE teachers
- ★ Learn about stages of infant development
- ★ Enjoy activities with your baby: music, sensory, books & more!



Choose the time that works best for your family:

**Wednesday, March 25**  
**5:00 - 6:00 p.m.**

Parkview Center School  
Door 19, Lower Level  
701 County Road B W  
Roseville, MN 55113

OR

**Saturday, March 28**  
**10:30 - 11:30 a.m.**

Parkview Center School  
Door 19, Lower Level  
701 County Road B W  
Roseville, MN 55113

## Questions?

Contact Melissa Brady at 651-604-3578  
or [melissa.brady@isd623.org](mailto:melissa.brady@isd623.org).



**Roseville Area Schools**

# Why Us?

## Our program...

- ★ Provides support for a child's optimal physical, intellectual, social, and emotional development during the important first years of life
- ★ Promotes informed, realistic attitudes and expectations about raising children
- ★ Offers child development information and a variety of parenting techniques
- ★ Provides support to parents in their efforts in raising children
- ★ Helps create effective communication in families
- ★ Provides information on resources available in the community
- ★ Offers day classes, evening and Saturday classes, drop in and play classes, early childhood screening, Pre-K classes for 3-5 year olds, parenting classes, home visits, and more!

# Resources

## For you and your family!

### Individual Parent Education

One-to-One Visits provide education and support to parents with children from birth to age 5. A licensed educator can work with you by phone, e-mail, a home visit, Zoom, or by appointment. Visits can include:

- Current information on parenting and child development issues
- Activities for young children
- Information about resources through the district and in the community
- A New Baby packet and much more!

This helpful service is FREE to parents with infants, toddlers and preschoolers living in the Roseville School District. For more information or to arrange a visit, please call Melissa Brady at 651-604-3578.

### Refer a Child to Help Me Grow

If you have concerns about your child's development, talk to your health care provider, or call Help Me Grow at 651-604-3700. Someone will assist you to arrange for a free screening or evaluation to determine if your child is eligible for Help Me Grow: Early Intervention Service. Early childhood specialists will work with eligible children and families to plan the services and support they need!

### Are you on the district database for Roseville Area Schools?

Do you have a new baby? If so, your child's name may not yet be on the Roseville Area Schools database. By registering your child's name now, you will be notified of early childhood screening, when to register your child for kindergarten, and receive important district publications including this brochure! Call now to get added: 651-604-3578.

# SCREEN AT AGE



## What is Early Childhood Screening?

A quick, free check to see how your child is growing, developing, and learning! Your child will complete activities that show their communication, cognitive, and motor skills.

Minnesota law requires all children ages 3–5 to complete early childhood screening for Pre-K and Kindergarten entry. Screening connects families with helpful early learning resources and support – giving kids the best start for school and beyond!



## Screen at Age 3!

The best time to screen your child is at age 3. Early screening helps identify any developmental or health concerns at an age when extra support and resources can make the biggest difference.

## Make An Appointment

The Roseville Early Childhood Program offers screenings at Anpétu Téča Education Center (1910 County Road B W, Roseville). Appointments take about one hour. To make an appointment, call **651-487-4378** ext 2 or email [ecfe@isd623.org](mailto:ecfe@isd623.org).

# Toy Lending Library

**Borrow toys, books, games and more!**

## Toy Lending Library

It's like having new toys every week! Open September–May to all individuals, families and child care providers. Membership is free. You can check out slides, toys, puzzles, games, children's books, and parenting resources. Call 651-604-3578 to register or visit the library in the Early Childhood Center at Parkview.

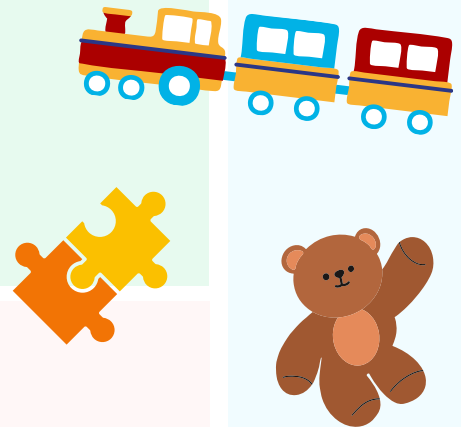


### टोइ लेन्डिङ लाइब्रेरी

हरेक हप्ता नयाँ खेलौना प्राप्त गरेजस्तै हुन्छ! व्यक्तिहरू, परिवारहरू, र बाल हेरचाह प्रदायकहरूका लागि सेप्टेम्बर-मेइसम्म खुला रहन्छ। सदस्यता नि:शुल्क छ। तपाईंले निम्न कुराहरू जाँचन सक्नुहुन्छ:

- स्लाइडहरू र रिड खेलौनाहरू
- पजल, खेलौना र खेलहरू
- बाल पुस्तकहरू र अभिभावकत्व सम्बन्धी अखबार/पुस्तक-पुस्तिकाहरू

दर्ता गर्नको लागि 651.487.4378 मा कल गर्नुहोस् वा पार्कभियु अर्ली चाइल्डहुड सेन्टर र फेयरभियु कम्युनिटी सेन्टरमा जानुहोस्।



### လံာ်ရဲဒါးလၢ ဟ့ၣ်လံာ်တၢ်ဂၢၤလံာ်က့ၢ်

လံာ်ကံးလၢဒီးန့ၣ်ဘၣ်တၢ်ဂၢၤလံာ်က့ၢ်အသိကံးနွံဒီးလံာ်.တၢ်အိးထီၣ်အီၤ(လၢစးတ့ၣ်ဘၣ်တ့ၢ်လၢမ့ၢ်) လၢပုၤန့ၣ်တၢ်ဂၢၤ.န့ၣ်ဖိထၢဖိတဖၣ်ဒီးပုၤလၢအက့ၢ်ထွဲမၤစၢၤဖိသၣ်တဖၣ်အဂီၢ်န့ၣ်လံာ်.တလံာ်ဟ့ၣ်က ရၢဖိအဘူးအလဲဘၣ်.နလဲၤသမံသမိးက့ၢ်သ့ဝဲလၢ-

- လဲၤဂၢၤလံာ်က့ၢ်စၢၤန့ၣ်ဖိထၢဖိသၣ်တၢ်ဂၢၤလံာ်က့ၢ်အလံာ်.
- တၢ်ပိုၤပိုၢ်(puzzles)ဒီးတၢ်ဂၢၤလံာ်က့ၢ်(games)တဖၣ်.
- ဖိသၣ်အလံာ်တဖၣ်.တၢ်သ့ဒီးဒိၣ်ထီၣ်ဖိသၣ်မဲးကစု(magazines) ဒီးမိၢ်ပၢ်အဂီၢ်လံာ်တဖၣ်.

ကိး(၆၅၁.၄၈၇.၄၃၇၈)လၢကဆဲးလံာ်မံၤ(မ့တမ့ၢ်)လဲၤက့ၢ်လံာ်ရဲဒါးဝဲ Parkview Early Childhood Center အဂီၢ်န့ၣ်တက့ၢ်.

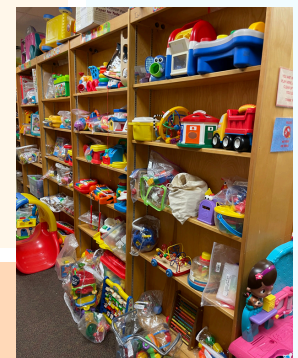
**Hours and more information can be found at [www.isd623.org/ECFE](http://www.isd623.org/ECFE). For questions, contact us at 651-604-3578.**

## Maktabadda ama Laybareeriga Boombalayaasha Carruurta

Waa sidii adigoo boombale cusub helay todobaad walba! Waa maktabaddaas shakhsiyaadka, qoysaska iyo dadka carruurta xanaaneeyaba oo dhan u furan tahay inta u dhaxaysa bilaha September iyo May. Waxaad ka amaahan kartaa:

- Qalabka carruurta ku sibiibaxato "slides" iyo kuwa giraangiraha ah "ring toys"
- Hal-xiraayelaal "puzzles," boombaleyaal iyo ciyaaraha lagu madaadaasho "games"
- Buugaagta carruurta iyo joornaalada iyo buugaagta laga barto waalidnimada

Wac 651.487.4378 si aad isaga diiwaan geliso ama booqo maktabadda ama laybareeriga ku yaal Parkview Early Childhood Center.



## Biblioteca de Juguetes

¡Es como tener juguetes nuevos todas las semanas! Abierta de Septiembre a Mayo para todas las personas, familias y proveedores de cuidado infantil. La membresía es gratuita. Puede pedir prestado toboganes y juguetes para bebés, rompecabezas, juguetes y juegos, libros para niños y revistas/libros de crianza. Llame al 651-487-4378 para inscribirse o visite las bibliotecas ubicadas en Parkview Early Childhood Center.

# Advisory Council

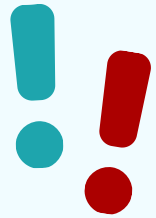
Support our Pre-K and ECFE programs!

## MISSION

The Pre-K & ECFE Advisory Council supports and increases awareness of early childhood programs (ECFE, Pre-K and Early Childhood Screening).

Join us to:

- Share ideas and feedback on family events and classes.
- Be an advocate for early childhood in the community and legislature.
- Plan and volunteer at events.



## MEETING DATES FOR 2025-2026

- Wednesday, December 10, 12:30 - 1:30pm
- Wednesday, February 11, 12:30 - 1:30pm
- Wednesday, April 8, 12:30 - 1:30pm



## IN PERSON OR ONLINE!

You can attend in person at the Early Childhood Center at Parkview or on Zoom.

Watch for the Zoom link and any addition details at:

[www.facebook.com/RosevilleECFE/](https://www.facebook.com/RosevilleECFE/)

## STAY UPDATED

For future updates and important information, follow the Roseville Early Childhood Program on Facebook! Find our page at [facebook.com/RosevilleECFE/](https://facebook.com/RosevilleECFE/).



**Roseville Area Schools**

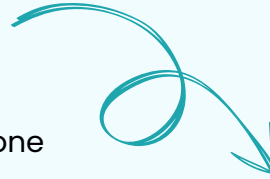


# How to Register

Registration starts on December 9, 2025!

There are 4 ways to sign up for ECFE classes and activities:

- ★ Visit [isd623.ce.eleyo.com](http://isd623.ce.eleyo.com) to register online
- ★ Call our office at 651-487-4378 to register by phone
- ★ Register in person at Anpétu Téča Education Center
- ★ Mail a paper registration form to:  
 Early Childhood Center at Anpétu Téča  
 1910 County Road B West  
 Roseville, MN 55113



## Fees & Payment – Winter/Spring 2026

ECFE classes operate on a sliding fee scale, so you pay what you can afford – no one is turned away for inability to pay. There is no better investment than your child!

Payment can be made by cash, check, VISA, DISCOVER, MASTERCARD, or American Express at the time of registration. Please make checks payable to Roseville Area Schools.

To determine what you would pay for a class, locate your gross yearly family income on the sliding fee scale below. The fee listed is your fee for the class. Please enter that fee when registering. To request a fee waiver, please call us at 651-487-4378.

### Sliding Fee Scale

Gross Family Income	A	B	C	D	E
\$150–200,000	\$214	\$175	\$126	\$88	\$19
\$100–150,000	\$183	\$150	\$108	\$75	\$16
\$75–100,000	\$153	\$125	\$90	\$62	\$14
\$50–75,000	\$121	\$99	\$71	\$49	\$11
\$30–50,000	\$89	\$73	\$53	\$36	\$8
\$20–30,000	\$70	\$57	\$41	\$28	\$6
Below \$20,000	\$38	\$31	\$23	\$16	\$3

### Sibling Care Sliding Fee Scale

Gross Family Income	A	B	C	D	E
\$150–200,000	\$107	\$88	\$63	\$44	\$10
\$100–150,000	\$92	\$75	\$54	\$38	\$8
\$75–100,000	\$77	\$63	\$45	\$31	\$7
\$50–75,000	\$61	\$50	\$36	\$25	\$6
\$30–50,000	\$45	\$37	\$27	\$18	\$4
\$20–30,000	\$35	\$29	\$21	\$14	\$3
Below \$20,000	\$19	\$16	\$12	\$8	\$2

# Our Policies

## General Registration Information

- Registration opens **December 9, 2025**, and continues until classes are full.
- Waitlists are created for full classes.
- Your child must be the age listed on the class chart by the first day of class.
- You may register for one 11-17 week class or up to two 6-9 week classes and there is no limit for classes 4 weeks or less.

## Cancellations & Refunds

- No refunds are given for emergency or weather closings or for days missed due to illness or vacation. We will attempt to make up individual canceled classes if the schedule allows.
- We reserve the right to cancel a class due to low enrollment. If a class or event is canceled due to low enrollment, a full refund will be given.
- **For 11-17 Week Classes:** If you decide to cancel within 3 weeks of your start date, a pro-rated refund will be given, minus a \$10 cancellation fee. All registrations will be considered final after the third week of class, and no refunds will be given after that time.
- **For Classes Less Than 10 Weeks:** If you cancel within 2 weeks of your start date, a pro-rated refund will be given, minus a \$10 cancellation fee. All registrations will be considered final after the second week of class, and no refunds will be given after that time.
- **Weather Closing Information:** Hazardous weather conditions may at times prevent us from holding classes. When Roseville Schools are closed or delayed, ECFE classes may not meet. Listen to your local news station for school closings or call 651-487-4378.



# Registration Form

Please return completed form to: **Early Childhood Center at Anpétu Téča**  
**1910 County Rd B West, Roseville, MN 55113** or scan and email to [anne.feider@isd623.org](mailto:anne.feider@isd623.org)

## Child Information

Child's Full Name (First): \_\_\_\_\_ (Middle): \_\_\_\_\_ (Last): \_\_\_\_\_  Male  Female  
Race/Ethnicity: \_\_\_\_\_ Date of Birth (Month/Day/Year): \_\_\_\_\_  
Special Health Concerns (accommodations, allergy, dietary restrictions, or special needs we should be aware of):  No  Yes, explain: \_\_\_\_\_  
Street Address: \_\_\_\_\_ Apt #: \_\_\_\_\_ City: \_\_\_\_\_ Zip: \_\_\_\_\_

## Additional Child Information (complete if a sibling is also joining the class or will attend sibling care)

Child's Full Name (First): \_\_\_\_\_ (Middle): \_\_\_\_\_ (Last): \_\_\_\_\_  Male  Female  
Race/Ethnicity: \_\_\_\_\_ Date of Birth (Month/Day/Year): \_\_\_\_\_  
Special Health Concerns (accommodations, allergy, dietary restrictions, or special needs we should be aware of):  No  Yes, explain: \_\_\_\_\_

## Parent/Guardian Information

Parent(s)/Guardian(s) Full Name(s): \_\_\_\_\_  
Name of Caregiver Attending Class: \_\_\_\_\_  
Number of Family Members in Your Home: \_\_\_\_\_ Primary Language Spoken at Home: \_\_\_\_\_  
Street Address: \_\_\_\_\_ Apt #: \_\_\_\_\_ City: \_\_\_\_\_ Zip: \_\_\_\_\_  
Phone: \_\_\_\_\_ Email Address(es): \_\_\_\_\_

## Emergency Contact

Full Name: \_\_\_\_\_ Relationship: \_\_\_\_\_ Phone: \_\_\_\_\_

## Class Information

Class Number	Class Fee
Choice 1	\$
Choice 2	\$
Choice 1	\$
Choice 2	\$
Total Fees =	\$

## Payment Information

Full Payment (cash, check or credit/debit card)  Payment Plan (1st payment with registration, 2nd payment processed on October 15)

Cash  Check (Make checks payable to Roseville Area Schools)  Credit/Debit Card (please fill out information below)

Card Type:  Mastercard  Visa  Discover  American Express Name on Card: \_\_\_\_\_  
Credit Card Number: \_\_\_\_\_ Exp: \_\_\_\_\_ CVC: \_\_\_\_\_  
Authorized Signature: \_\_\_\_\_ Date: \_\_\_\_\_

By registering your child for ECFE classes, you are acknowledging that photos of you and your child may be used for educational and publicity purposes for Roseville Area Schools or Roseville Community Education. To read the District's full policy on Directory Information, please contact ECFE at 651.487.4378.

Immunization record or a notarized conscientious objector letter is required in order to participate in ECFE and Pre-K classes. Please submit to your parent educator, teacher, or the office.



# ECFE

For ages 0 to 5 and their caregivers!

## Early Childhood Family Education!

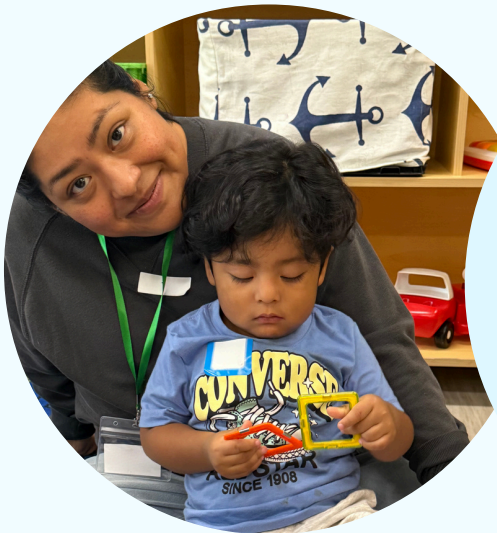
**Check out toys, books and games from our Toy Lending Library!**

pg. 12



**Have a new baby? Attend our free Baby Shower event!**

pg. 9



**Register for classes!**