

STUDENT PHONE POLICY & GUIDELINES

Phones are not to be used during school. Every student will be assigned their own personal Yondr Pouch. Yondr Pouches are considered school property, students are responsible to maintain their Pouch in good working condition.

DAILY PROCESS

As students arrive at school, they will:

- 1) Turn their phone on airplane mode or turn them off.
- 2) Place their phone inside their pouch and secure it in the presence of school staff.
- 3) Store their pouch in their backpack for the day.
- 4) At lunch students will be allowed to use their phone. Students will unlock their pouch with proctors/staff and will put the pouch in a basket.
- 5) Before 5th period students will put the phone in the pouch and verify with the teacher.

At the end of the day, students will unlock their pouch, remove their phone and put their pouch in a storage bin.

***Students arriving late or leaving early will pouch/unpouch their phones in the Main Office.

VIOLATIONS

Pouch Damage / Lost Pouch / Using Phone During School

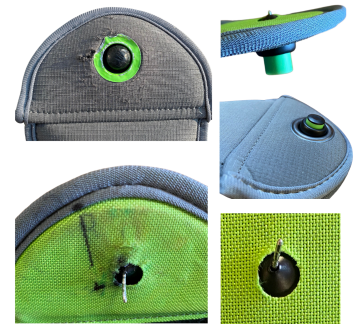
If a student damages their pouch or is caught using their phone they will be sent to Administration.

Administration will implement the following repercussions for damaged pouches or unauthorized phone use:

- **Loss of Cell Phone Use During Lunch / Check Phone at Office for the Day / Parent Pickup / Parent Conference / Saturday School**
- **\$20 fee for a replacement pouch (recorded in Aeries)**

Examples of pouch damage include:

- Bent pin
- Ripped fabric
- Deep scratches on the lock exterior + green ring
- Intentional pen marks on the inside of the pouch
- Pin and button not fully recessing due to pin damage



Unused Pouches

If a student forgets their pouch, proctor will provide pouch and make sure phone is secured in pouch.