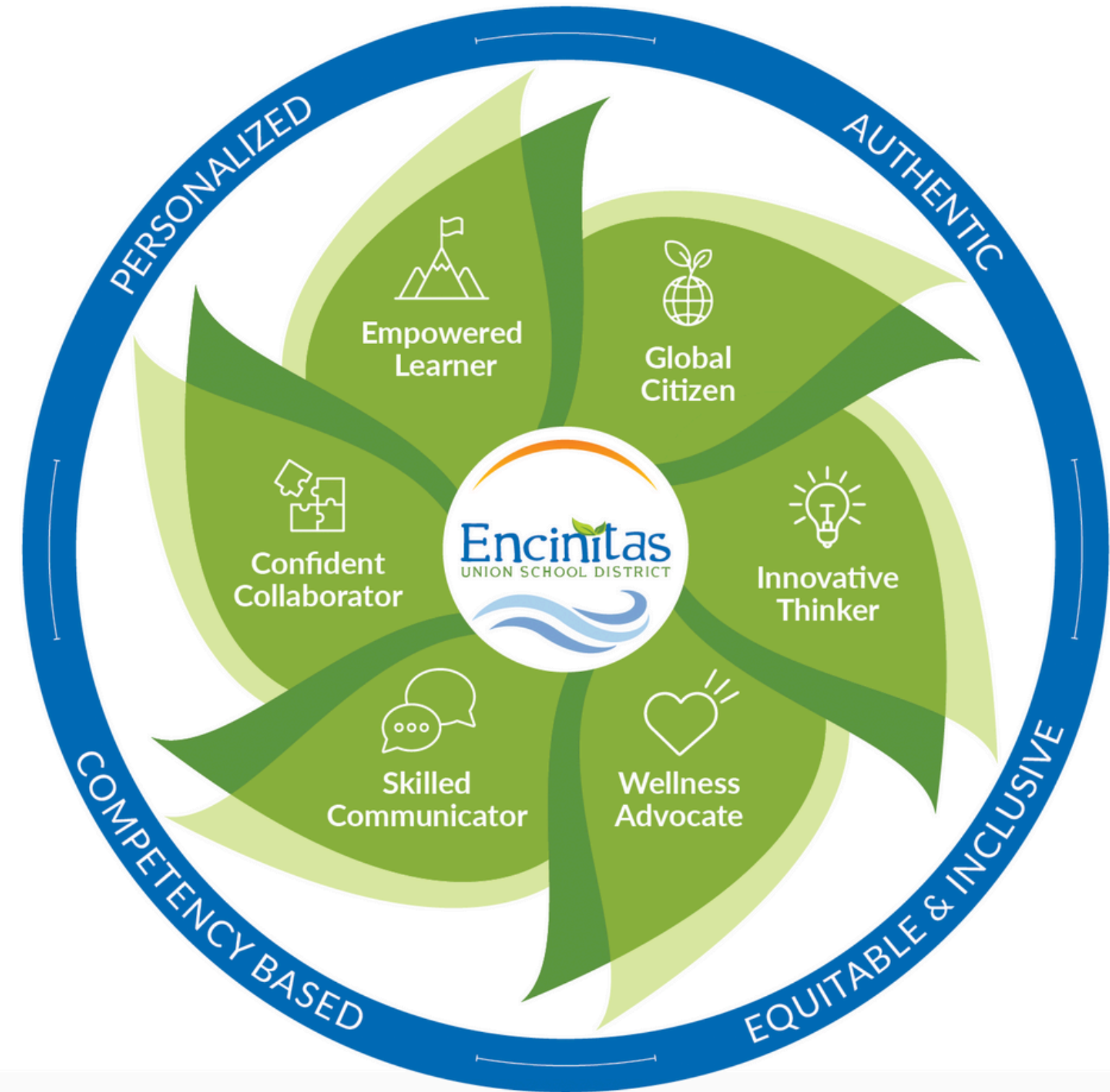


PEC Rebuild Logistics PEC, ECC, PDL

WINTER 2026



Thank You for Supporting

Measure



UPDATES:

- CONSTRUCTION UPDATES
- LOGISTICS DURING DISPLACEMENT
- COMMUNICATIONS



DESIGN UPDATE



Paul Ecke Central Elementary School



Relocation: Site Configurations

✓ PEC K-3 TO ECC - 300

✓ PEC 4-6 TO PDL - 256

✓ ECC 365 + 300 = 665 STUDENTS 2026/2027

PDL 386 + 256 = 642 STUDENTS 2026/2027

El Camino Creek



***Kinder classrooms will be in the same area as current ECC kinder**

***Shift ECC garden permanently**

Park Dale Lane



PEC Logistics Planning

	2025				2026					
	Sep	Oct	Nov	Dec	Jan	Feb	Mar	Apr	May	Jun
Transportation:										
Survey to parents/ # of buses										
Route/ Traffic Study (discuss at City Liaison meeting re: logistics at pickup points)										
RFP										
Pickup/Dropoff: Cottonwood Creek Park, Orpheus Park, Pacific View, Leucadia Oaks Park										
Bus Schedule, RAS (no transport - pickup/dropoff at receiving school)										
Storage:										
Moving containers										
RFP Moving services PEC-PDL & ECC										
Long Term Storage needs @ ME										
All Files/Office/CUMS/SPED										
IT equipment/Temp controlled										before EOY
Repurpose ME Portables										
Teacher Moves:										
Color coded by ECC / PDL / separate temp storage										
RFP Moving services										
Provide boxes to staff										
Trash Dumpster at PEC										
ECC and PDL maps with room #s ready for PEC, note furniture and tech needs										
Map Teacher- staff location										
Monthly moving team mtgs (school vs personal items)										
					Monthly Moving team, DO,Principal, OM moving to weekly					
ECC will need temporary storage, ECC wants to keep their culinary room										
Furniture (District only):										
Furniture @ interim housing sites										
Assessment of staff location/Needs										
Furniture saved/stored/DO use										
Furniture surplus/dispensed										
Asset Recovery:										
Items that will be used interim housing sites										
Apple Tv, Projectors, WAP, Screens, Speakers										
IDF, switches, phones printers										
Items saved/stored for Future DO use										
Surplused/dispensed										
Temporary Housing:										
Portable classrooms/piggy back bid										
Architect/site work										
Delivery of portables										



- ✓ PORTABLE CLASSROOMS
- ✓ PDL KITCHEN EXPANSION
- ✓ ECC POD CONVERSIONS
- ✓ STORAGE PODS AND OFF SITE STORAGE

Bell Schedule

- BELL SCHEDULE REMAINS THE SAME 8:00- 2:20 AND 8:00-12:45 (F)
- ENRICHMENT, INTERVENTION AND SPECIAL EDUCATION SUPPORTS/ COMMON BELL SCHEDULE
- ECC WAS CONSTRUCTED AND DESIGNED FOR 1000+ STUDENTS
- ADDITIONAL ON SITE SUPERVISION FOR PEC FROM 7:15 A.M. (BREAKFAST AVAILABLE)
- ADDITIONAL AFTER SCHOOL SUPERVISION FOR PEC AT ECC UNTIL 2:45 P.M.
- HIGH LEVELS OF BUS PARTICIPATION WILL HELP WITH TRAFFIC
- RIGHT AT SCHOOL REGULAR HOURS AT BOTH SITES (ECC AND PDL)
- YMCA AT FARM LAB AFTERSCHOOL PROGRAM WILL PICK UP AT BOTH SITES.

Transportation

- ORPHEUS PARK PICK UP WITH SEPARATE BUSES TO ECC AND PDL
- SUPERVISION AT ORPHEUS FOR AM AT 7:15 A.M.
- BUSES LEAVE PROMPTLY BY 7:25 A.M.
- LOAD AND GO (GET THERE, LOAD AND GO)
- BUS PASSES
- PARENT APP THAT TRACKS BUS PROGRESS
- RETURN TO ORPHEUS PARK 2:50 P.M. (TBD)
- 168 OF 300 AT ECC ON BUS, 171 OF 254 AT PDL ON BUS



Staffing and Admin Support

- TEACHERS WILL TEACH STUDENTS FROM THEIR SCHOOLS
- INTERVENTION, LRC, SPEECH AND OTHER SERVICES BOTH SITES
- ONE MTSS TOSA/ADMIN DESIGNEE AT EACH SITE
- MR. SECHREST AT BOTH SITES 2 DAYS PER WEEK AND EVERY OTHER FRIDAY
- ONE OFFICE STAFF MEMBER FROM PEC AT EACH OFFICE
- SPANISH SPEAKING SUPPORT AT BOTH SITES
- ALL STAFF REMAIN EMPLOYEES AND RETURN TO PEC UPON COMPLETION

Tours at ECC and PDL



KINDER TOURS @ ECC

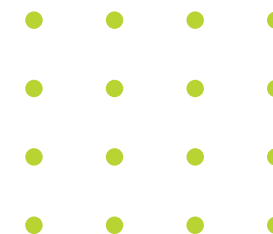
- 2/26 @ 9:00 A.M.
- 3/9 @ 9:00 A.M.
- 4/22 @ 9:00 A.M.
- 5/21 @ 3:00 P.M.

PEC FAMILY TOURS (BRING STUDENTS)

- 4/24 ECC @ 1:30 P.M.
- 5/1 PDL @ 1:30 P.M.

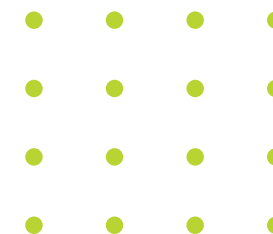
PEC STAFF AT ECC FOR TOURS/TLC MARCH 13TH

PEC STAFF AT PDL FOR TOURS/TLC MARCH 6TH



Right At School and YMCA

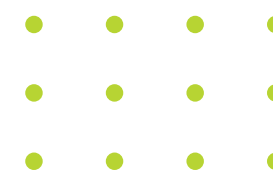
- AVAILABLE AT BOTH SITES- REGULAR FEES APPLY
- HALF OF STAFF FROM PEC AT EACH SITE
- BLENDED PROGRAM BUT SPLIT BY GRADE LEVEL OR ROTATIONS
- STUDENTS ON BUS WILL NOT PARTICIPATE IN RAS FOR THAT LEG OF THE DAY
- YMCA FARM LAB WILL PICK UP AT ECC AND PDL



- RECESS MAY BE COMBINED TO SUPPORT CONNECTIONS
- LUNCH SCHEDULES WILL BE BUILT BASED ON NUMBERS AND ENRICHMENT AT EACH SITE. THIS ALSO MAY BE COMBINED.
- ADDITIONAL SUPERVISION SUPPORT FROM PEC STAFF SPLIT BETWEEN BOTH SITES
- BOTH CAMPUSES HAVE LARGE PLAYGROUNDS, FIELDS AND HARDCOURT AREAS AND INDOOR/OUTDOOR ACTIVITIES

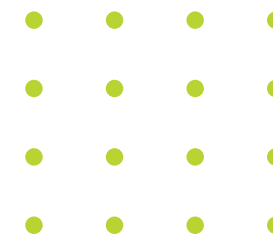


- COORDINATION WITH PRINCIPALS AND PTAS
- PEC ONE ALL SCHOOL ASSEMBLY PER MONTH ALTERNATING CAMPUSES
 - BUSSING PROVIDED
- COORDINATION OF PLAYDATES WITH ECC AND PEC KINDER PRIOR TO SCHOOL STARTING
- COORDINATION OF BACK TO SCHOOL NIGHTS, ETC. FAMILY EVENTS AT BOTH SITES. (ICE CREAM SOCIAL FOR ALL AT ECC, FALL CARNIVAL AT PDL)



Enrichment and Library

- ENRICHMENT PROVIDED BY EACH SCHOOL'S STAFF
- COORDINATION OF MUSIC AND ART
- YOGA AND PE ON OPPOSITE WEEKS
- ADDITIONAL LIBRARY SUPPORT- LIBRARY LUNCH HOURS
- SPANISH BOOKS FROM PEC AT BOTH SITES



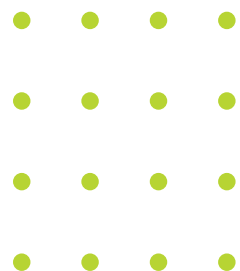
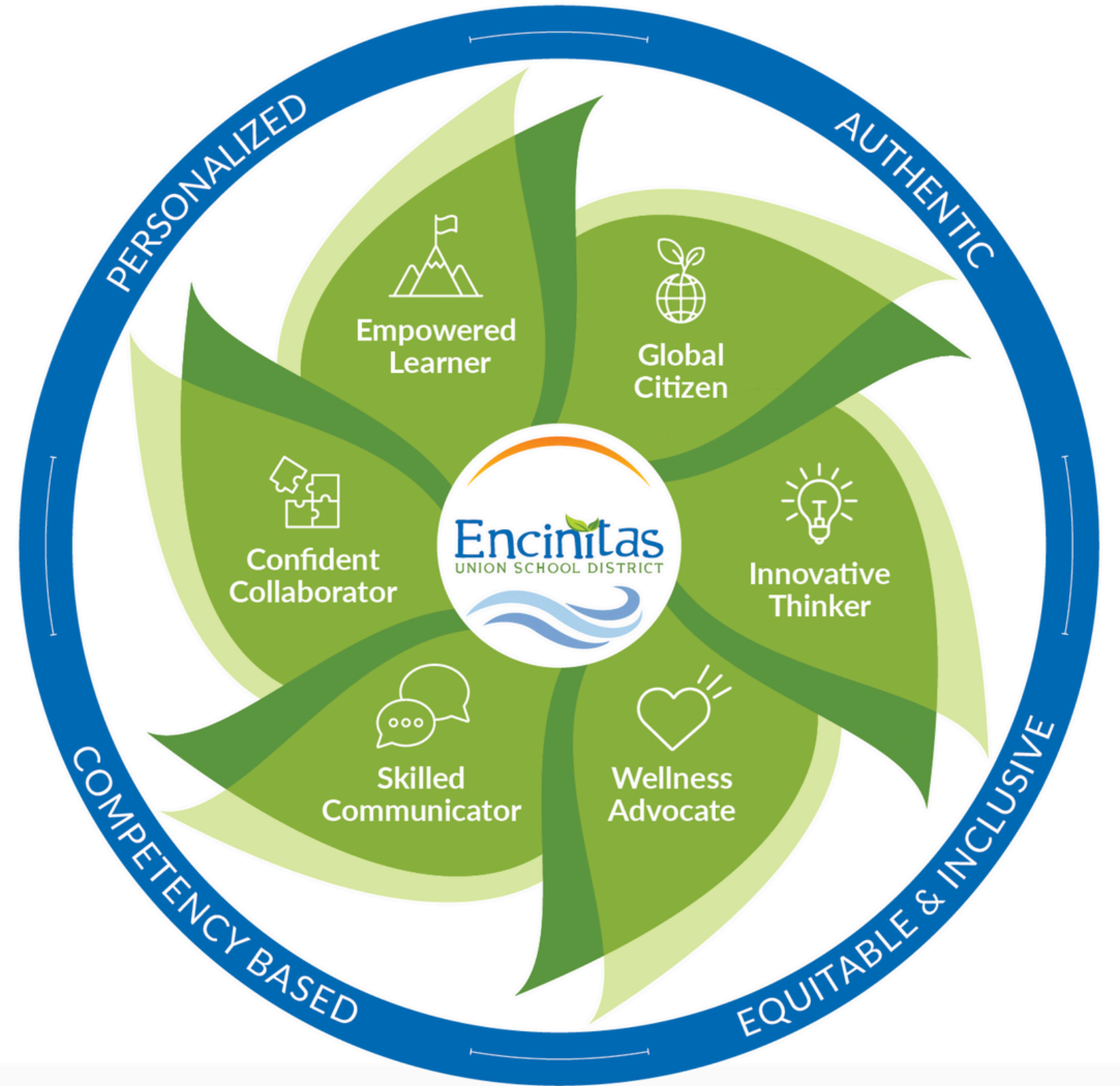
- **ATTENDANCE LINE -SAME NUMBERS**
- **NEWSLETTERS - BY SITE AND BY PRINCIPAL**
- **EMAILS - BY SITE AND BY PRINCIPAL**



Encinitas

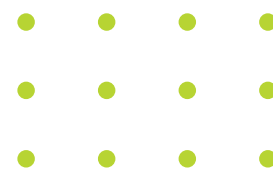
UNION SCHOOL DISTRICT

Thank You!



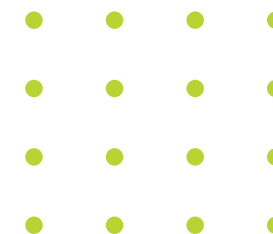
PEC Logistics Planning

	2025					2026				
	Sep	Oct	Nov	Dec	Jan	Feb	Mar	Apr	May	Jun
Teacher Moves:										
Color coded by ECC / PDL / separate temp storage										
RFP Moving services										
Provide boxes to staff										
Trash Dumpster at PEC										
ECC and PDL maps with room #s ready for PEC, note furniture and tech needs										
Map Teacher- staff location										



Staff Moves & Storage

- DISTRICT FURNITURE GOES WITH YOU
- COLOR CODED BOXES WITH ROOM NUMBERS TO BE DELIVERED APRIL/MAY
- STORAGE AT ME & ECC
- REFRESH AND PURGE WHEN YOU CAN- DUMPSTERS AND RECYCLING
- TRANSPORT OR STORE ALL PERSONAL/VALUABLE ITEMS
- RELEASE TIME PER CONTRACT
- LOUNGES AND WORKROOMS SHARED - 3 COPIERS PER SITE
- MUST BE OUT THE LAST WEEK OF SCHOOL. YIKES! DEMOLITION BEGINS!
- MOVING FAQ STAFF MEETING MARCH 2026
- PEC AT ECC FOR TOURS/TLC MARCH 13TH
- PEC AT PDL FOR TOURS/TLC MARCH 6TH



DESIGN UPDATE



