

Upland Unified School District

Pre-School Lunch Menu

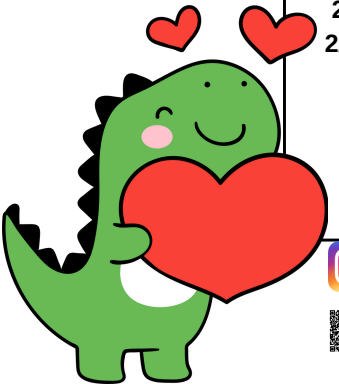


served daily

Fresh Fruit & Vegetable Options Vary Daily

Local Driftwood Dairy California Milk 1% White Milk or Non-Fat White Milk and Lactaid milk is offered upon Request

Day	Monday	Tuesday	Wednesday	Thursday
<p>Week 1 Dates 2/2 to 2/6 2/16 to 2/20</p>	<p>Mini Chocolate Chip Muffin, Turkey Stick & String Cheese Fruit Option (1/4 cup) Vegetable Option (1/4 cup) Milk (1% or FF)</p>	<p>Dick and Jane Graham Crackers, Yogurt & Cheese Cubes Fruit Option (1/4 cup) Vegetable Option (1/4 cup) Milk (1% or FF)</p>	<p>Turkey & Cheese Kit Fruit juice Option (1/4 cup) Vegetable Option (1/4 cup) Milk (1% or FF)</p>	<p>Goldfish, Turkey Stick & Strawberry Go-gurt Fruit Option (1/4 cup) Vegetable Option (1/4 cup) Milk (1% or FF)</p>
	<p>Week 2 Dates 2/9 to 2/13 2/23 to 2/27</p>	<p>Mini Blueberry Muffin, Turkey Stick & String Cheese Fruit Option (1/4 cup) Vegetable Option (1/4 cup) Milk (1% or FF)</p>	<p>Bear Graham Crackers, Yogurt & Cheese Cubes Fruit Option (1/4 cup) Vegetable Option (1/4 cup) Milk (1% or FF)</p>	<p>Turkey Ham and Cheese Sandwich on Brioche Roll Fruit juice Option (1/4 cup) Vegetable Option (1/4 cup) Milk (1% or FF)</p>



 @UUSDFARMTOSCHOOL

 [HTTPS://BIT.LY/UPLANDNUTRITION.COM](https://bit.ly/uplandnutrition.com)

*Menu subject to change *This institution is an equal opportunity provider

Item Code Numbers:

Mini Chocolate Chip Muffin (1 ounce WG): GS-134400 (90 servings/case)

Cheddar Cheese Cubes - GS-403439 (200 servings/case)

Dick & Jane Graham Crackers: GS: 202873, 202902 (120 servings/case)

Mini Blueberry Muffin: GS:143670 (96 servings/case)

Bear Graham Crackers: GS: 202732

Yoplait Strawberry Banana Yogurt (6 ounce): GS: 305875

Yoplait Strawberry Yogurt (6 ounce): GS: 305918 (6/32oz)

Jack Links Sweet BBQ Chicken Bites: GS: 252635 (48 servings/case)

Old Wisconsin Turkey Stick: GS: 305874 (144 servings/case)/ Sysco: 4446813

All Natural Smokehouse Turkey Breast Sticks: 410452 (200 servings/case)

Turkey & Cheese Kit: GS: 403860 (48 servings/case)

Turkey Ham & Cheese on a Brioche Bun: GS:403868 (72 servings/case)

Wowbutter & Jelly Sandwich (Albies): GS: 134776 (40 servings/case)

Go Gurt: 305575 (96 servings/case)

Goldfish: .75 oz - 200290 (300 servings/case)

Yogurt serving no more than 23 grams/sugar per 6 ounce, 6 ounces must be served to get 1.5 MEQ M/MA

Cereal Options Below: 6 grams of sugar per dry ounce options to serve

General Mills Cheerios (GS-203134)	1 ounce	6 grams		Serve
General Mills Cinnamon Chex (GS-203719)	1 ounce	6 grams		Serve
General Mills Cinnamon Toast Crunch (GS-200914)	1 ounce	6 grams		Serve
General Mills Cinnamon Toast Crunch (GS-248624)	2 oz	11 grams		Serve
General Mills Blueberry Chex (GS-251319)	2 oz	12 grams		Serve
General Mills Cinnamon Chex (GS-248631)	2 oz	12 grams		Serve
General Mills Trix 25% less sugar (GS-254282)	2 oz	12 grams		Serve
General Mills Cocoa Puffs 25% less sugar (GS-248633)	2 oz	12 grams		Serve