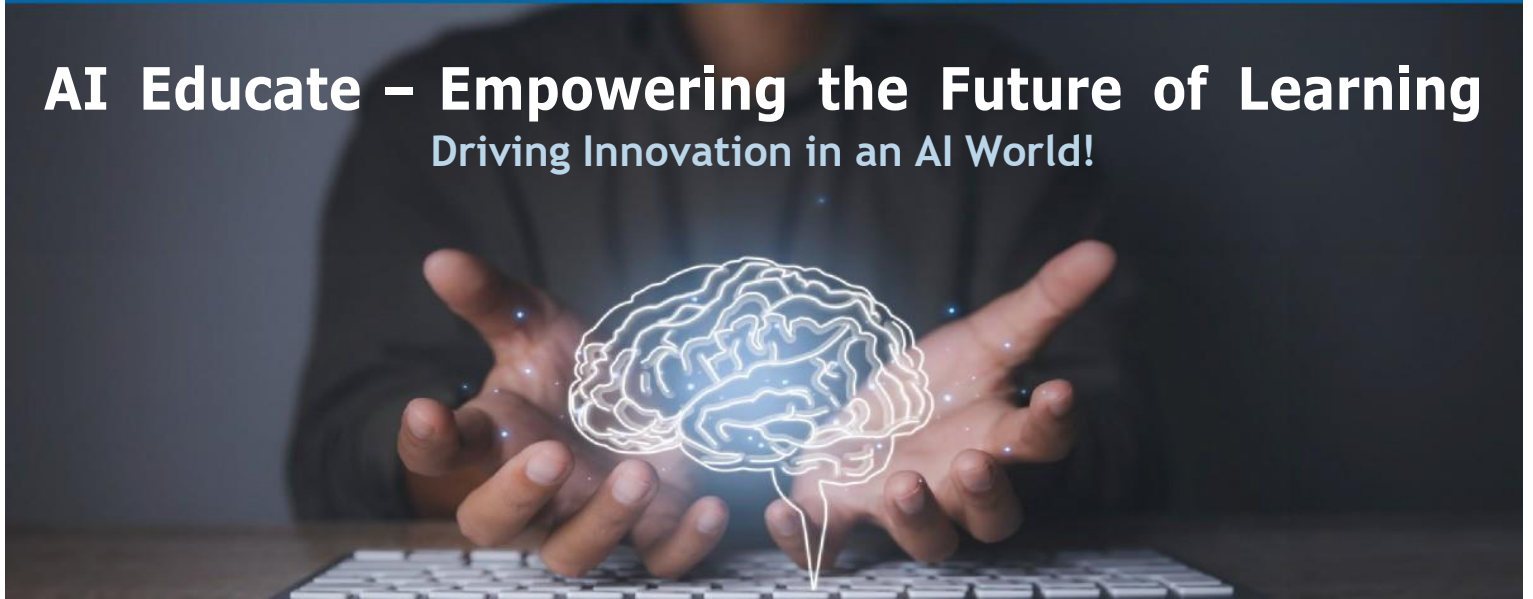


Professional Development Program

AI Educate – Empowering the Future of Learning

Driving Innovation in an AI World!



Tuesday, May 12, 2026 • ISC @ Sequoya

8:00 a.m. - 8:30 a.m. - Registration/Sign-In

8:30 a.m. - 2:30 p.m. - Conference



Driving Innovation in an AI World - Artificial intelligence is reshaping how we live, learn, and lead, and schools are at the forefront of this transformation. Building on two years of AI-focused professional learning, Eastern Suffolk BOCES invites you to a dynamic day of inspiration and action. Join **Thomas C. Murray** and **Dr. Adam A. Phyll III** from All4Ed's Future Ready Schools® for an immersive conference that helps educators navigate both the challenges and opportunities of artificial intelligence. Whether you're leading a classroom or a district, you'll gain practical strategies, authentic



insights, and tools to lead with purpose in an AI-driven world.

Explore how to **apply AI ethically, amplify student voices, strengthen leadership capacity, and collaborate with peers** to turn innovative ideas into action. Don't miss this opportunity to move **beyond the hype and lead with purpose** in an AI-driven world. Breakout sessions and schedule to follow. **Register now to secure your spot!**

In partnership with All4Ed's Future Ready Schools®

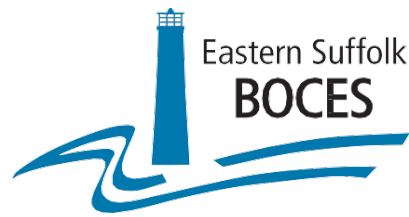


COST: \$199 per person (includes buffet lunch)

AUDIENCE: K-12 School and District Administrators, Teachers, Library Media Specialists

LOCATION: Instructional Support Center @ Sequoya, 750 Waverly Avenue, Holtsville, NY

REGISTER: [Click Here to Register](#)



Department of Educational Support Services · Professional Development Program

Dyslexia: What It Is; What It Isn't; How to Assess It and What to Do

Presented by **Concetta Russo Ed.D.**



This workshop will explore the latest research in dyslexia. It will further identify the different types of dyslexia and how to assess them. Focus will be targeted toward the different types of treatments and remediation techniques especially for early identification.

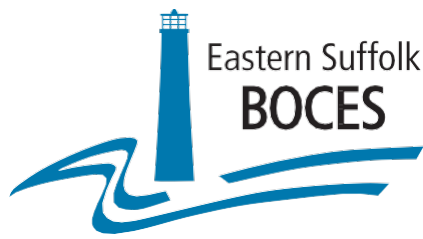
Learners will be able to:

1. Understand the different types of dyslexia and their implications in the educational process
2. Understand how to assess students with dyslexia
3. Understand past and current research around dyslexia
4. Determine different treatments plans and strategies for the remediation of dyslexia

DATE: Thursday, March 19, 2026
TIME: 8:30 am to 2:30 pm
COST: \$175 for subscribers / \$225 for non-subscribers
AUDIENCE: K-12 Teachers; Administrators; Psychologists
LOCATION: Instructional Support Center @ Sequoya, 750 Waverly Ave, Holtsville, NY
REGISTER: <http://webreg.esbooces.org>
CTLE: Content



Concetta Russo, EdD - Dr. Russo was a Director of Special Education for twenty-two years in the Massapequa Public Schools. She was also a full-time assistant professor at Seton Hall University and St. John's University. During her years as a Director of Special Education, Dr. Russo has opened many innovative programs for children with autism, Dyslexia and learning disabilities. Her research, teaching and clinical practices are in the nature and treatment of reading disorders, specializing in the remediation of dyslexia and phonological processing and the implementation of the "Response to Intervention" process. Dr. Russo has had a private practice as a learning specialist for 40 years and currently consults with public and private schools in establishing reading programs for children with dyslexia. She is currently the President of the Long Island Branch of the International Dyslexia Association. Her consulting firm is known as "Crossroads for Educational Services, Inc." Dr. Russo has presented her expertise on learning disabilities, dyslexia and reading disorders at many conferences and seminars throughout the United States. She has published "R TI Guide: Making It Work" for National Publications Resources Inc. as well as "Recipe for Reading" workbooks and "Reading Recipe" for EPS Learning.



Department of Educational Support Services · Professional Development Program

Designing Powerful Learning Through Problem Based Learning (PBL)

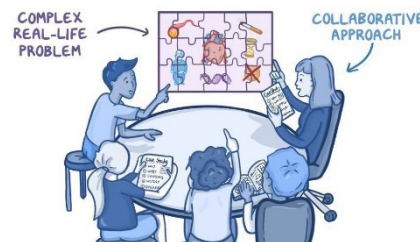
Presented by Sherry St. Clair

Problem-Based Learning (PBL) engages students in rigorous, real-world challenges that deepen content understanding while building essential life and career skills. Through well-designed PBL experiences, students think critically, collaborate meaningfully, and take ownership of their learning.

In this interactive professional learning session, participants will explore how to design and facilitate high-quality PBL experiences that **promote student engagement, discourse, leadership, and authentic problem solving**. Educators will examine what makes learning truly rigorous and relevant and learn practical strategies to bring PBL to life in their classrooms.

Participants Will:

- Analyze learning experiences for rigor and engagement
- Understand the key components of effective problem-based learning
- Learn how PBL deepens content understanding
- Explore facilitation strategies that build student voice, agency, and leadership



Portrait of a Graduate Alignment

Problem-Based Learning directly supports Portrait of a Graduate competencies by strengthening:

- Critical thinking and problem solving
- Collaboration and communication
- Student agency and ownership
- Leadership and adaptability
- Real-world readiness



DATE: Thursday, April 23, 2026
TIME: 8:30 AM to 2:30 PM (lunch included)
AUDIENCE: Teachers across the content areas grades 6-12; instructional coaches, department chairs/directors
COST: \$349 for subscribers / \$399 for non-subscribers (per person)
LOCATION: Instructional Support Center @ Sequoya, 750 Waverly Ave, Holtsville, NY 11742
CTLE: Pedagogy
REGISTER: <http://webreg.esboces.org>



Sherry St. Clair is the visionary founder of Reflective Learning LLC. Her organization partners with schools globally, delivering tailored training and coaching services designed specifically for school administrators, instructional coaches and educators. Sherry specializes in instructional leadership, effective classroom practices, classroom walkthroughs, data utilization, and establishing frameworks for successful classroom coaching, all driven by her passion for coaching schools to meet the diverse needs of every student. Instructional leaders worldwide have embraced her influential publication, Coaching Redefined: A Guide to Leading Meaningful Instructional Growth, released in June 2019. Her latest book, Intentional Instructional Moves, launched in October 2024, continues to extend her impact in the field.



DEPARTMENT OF EDUCATIONAL SUPPORT SERVICES

PROFESSIONAL DEVELOPMENT PROGRAM

22nd Annual Leadership Academy

July 8 and July 9, 2026



From Vision to Practice:

SAVE THE DATE

Leading with Clarity, Coherence, and Purpose

SAVE THE DATE

• MORE INFORMATION TO FOLLOW •

LOCATION: 750 Waverly Avenue, Holtsville, New York 11742

TIME: Two-Day Academy - 8:30 am – 2:30 pm (Includes lunch)

AUDIENCE: Superintendents, Assistant Superintendents, Executive Directors, Directors, Chairpersons, Veteran and New K-12 Principals, Assistant Principals and Deans; Aspiring Assistant Principals

REGISTER: webreg.esboces.org (click on link)

Eastern Suffolk BOCES does not discriminate against any employee, student, applicant for employment, or candidate for enrollment on the basis of sex, gender, race, color, religion or creed, age, weight, national origin, marital status, disability, sexual orientation, gender identity or expression, transgender status, military or veteran status, domestic violence victim status, genetic predisposition or carrier status, or any other classification protected by Federal, State, or local law. ESBOCES also provides equal access to the Boy Scouts and other designated youth groups. Inquiries regarding the implementation of the applicable laws should be directed to either of the ESBOCES Civil Rights Compliance Officers at ComplianceOfficers@esboces.org: the Assistant Superintendent for Human Resources, 631-687-3029, or the Associate Superintendent for Educational Services, 631-687-3056, 201 Sunrise Highway, Patchogue, NY 11772. Inquiries may also be addressed to the Office for Civil Rights at the US Department of Education, 32 Old Slip, 26th Floor, New York, NY 10005, 646-428-3800, OCR.NewYork@ed.gov.