

Table of Contents

[Preamble](#)2

[School Wellness Committee](#)3

[Wellness Policy Implementation, Monitoring,
Accountability, and Community Engagement](#)5

[Nutrition](#)7

[Physical Activity](#)12

[Other Activities that Promote Student Wellness](#)15

[Glossary](#)17

Geneva County Wellness Policy

Preamble

Geneva County School District is committed to the optimal development of every student. The District believes that for students to have the opportunity to achieve personal, academic, developmental and social success, we need to create positive, safe and health-promoting learning environments at every level, in every setting, throughout the school year.

Research shows that two components, good nutrition and physical activity before, during and after the school day, are strongly correlated with positive student outcomes. For example, student participation in the U.S. Department of Agriculture's (USDA) School Breakfast Program is associated with higher grades and standardized test scores, lower absenteeism and better performance on cognitive tasks.^{1,2,3,4,5,6,7} Conversely, less-than-adequate consumption of specific foods including fruits, vegetables and dairy products, is associated with lower grades among students.^{8,9,10} In addition, students who are physically active through active transport to and from school, recess, physical activity breaks, high-quality physical education and extracurricular activities – do better academically.^{11,12,13,14} Finally, there is evidence that adequate hydration is associated with better cognitive performance.^{15,16,17}

This policy outlines the District's approach to ensuring environments and opportunities for all students to practice healthy eating and physical activity behaviors throughout the school day while minimizing commercial distractions. Specifically, this policy establishes goals and procedures to ensure that:

- Students in the District have access to healthy foods throughout the school day – both through reimbursable school meals and other foods available throughout the school campus– in accordance with Federal and state nutrition standards;
- Students receive quality nutrition education that helps them develop lifelong healthy eating behaviors;
- Students have opportunities to be physically active before, during and after school;
- Schools engage in nutrition and physical activity promotion and other activities that promote student wellness;
- School staff are encouraged and supported to practice healthy nutrition and physical activity behaviors in and out of school;
- The community is engaged in supporting the work of the District in creating continuity between school and other settings for students and staff to practice lifelong healthy habits; and
- The District establishes and maintains an infrastructure for management, oversight, implementation, communication about and monitoring of the policy and its established goals and objectives.

This policy applies to all students, staff and schools in the District. Specific measureable goals and outcomes are identified within each section below.

I. School Wellness Committee

Committee Role and Membership

The District will convene a representative district wellness committee (hereto referred to as the DWC or work within an existing school health committee) that meets at least one time per year to establish goals for and oversee school health and safety policies and programs, including development, implementation and periodic review and update of this district-level wellness policy (heretofore referred as “wellness policy”).

The DWC membership will represent all school levels (elementary and secondary schools) and include (to the extent possible), but not be limited to: parents and caregivers; students; representatives of the school nutrition program (e.g., school nutrition director); physical education teachers; health education teachers; school health professionals (e.g., health education teachers, school health services staff [e.g., nurses, physicians, dentists, health educators, and other allied health personnel who provide school health services], and mental health and social services staff [e.g., school counselors, psychologists, social workers, or psychiatrists]; school administrators (e.g., superintendent, principal, vice principal), school board members; health professionals (e.g., dietitians, doctors, nurses, dentists); and the general public. When possible, membership will also include Supplemental Nutrition Assistance Program Education coordinators (SNAP-EDEDSNAP-Ed). To the extent possible, the DWC will include representatives from each school building and reflect the diversity of the community.

Leadership

The Superintendent or designee(s) will convene the DWC and facilitate development of and updates to the wellness policy, and will ensure each school’s compliance with the policy.

The designated official for oversight is

Anna Whitehead, Child Nutrition Director

The names, titles, and contact information of these individuals are:

Name	Title / Relationship to the School or District	Email address	Role on Committee
Becky Birdsong	Superintendent	birdsongb@genevacoboe.org	Member
Anna Whitehead	CNP Director	whiteheada@genevacoboe.org	Chair

GENEVA COUNTY WELLNESS POLICY

Heather Hatton	Principal	hattonh@genevacoboe.org	Member
William Porter	Teacher	porterb@genevacoboe.org	Member
Meme Stafford	Principal	Meme.stafford@genevacoboe.org	Member
Leslie Habbard	Principal	Habbardl@genevacoboe.org	Member
Jason Tucker	Principal	jason.tucker@genevacoboe.org	Member
Cindy Williford	Nurse	wilifordc@genevacoboe.org	Member
Miyah Cade	Nurse	miyah.cade@genevacoboe.org	Member
Holly Williams	Nurse	Holly.williams@genevacoboe.org	Member
Al Gilmore	Teacher	Al.gilmore@genevacoboe.org	Member
Paul McLean	Teacher	paul.mclean@genevacoboe.org	Member
Katie Hobbs	Nurse	Katie.hobbs@genevacoboe.org	Member
Jake Allen	Teacher	jake.allen@genevacoboe.org	Member
Amanda Smith	Principal	amanda.smith@genevacoboe.org	Member
Tammy Scott	Lunchroom Manager	scottt@genevacoboe.org	Member
Deanna Spivey	Lunchroom Manager	deanna.spivey@genevacoboe.org	Member
Samantha Westmoreland	Lunchroom Manager/Parent	ingrams@genevacoboe.org	Member
Rina Pendleton	Lunchroom Manager	pendletonr@genevacoboe.org	Member
Rylla Shields	Lunchroom Manager/Parent	shieldsr@genevacoboe.org	Member
Jenna Justice	Parent	justicej@genevacoboe.org	Member
Lorin Gomez	Parent	Lorin.gomez@genevacoboe.org	Member

Each school will designate a school wellness policy coordinator, who will ensure compliance with the policy. Refer to Appendix A for a list of school-level wellness policy coordinators.

II. Wellness Policy Implementation, Monitoring, Accountability and Community Engagement

Implementation Plan

The District will develop and maintain a plan for implementation to manage and coordinate the execution of this wellness policy. The plan delineates roles, responsibilities, actions and timelines specific to each school; and includes information about who will be responsible to make what change, by how much, where and when; as well as specific goals and objectives for nutrition standards for all foods and beverages available on the school campus, food and beverage marketing, nutrition promotion and education, physical activity, physical education and other school-based activities that promote student wellness. It is recommended that the school use the [Healthy Schools Program online tools](#) to complete a school-level assessment based on the Centers for Disease Control and Prevention's School Health Index, create an action plan that fosters implementation and generate an Triannual progress report.

This wellness policy and the progress reports can be found at:
<http://www.genevacountyschools.com>

The District will retain records to document compliance with the requirements of the wellness policy at Geneva County Board of Education. Documentation maintained in this location will include but will not be limited to:

- The written wellness policy;
- Documentation demonstrating that the policy has been made available to the public;
- Documentation of efforts to review and update the Local Schools Wellness Policy; including an indication of who is involved in the update and methods the district uses to make stakeholders aware of their ability to participate on the DWC;
- Documentation to demonstrate compliance with the annual public notification requirements;
- The most recent assessment on the implementation of the local school wellness policy;
- Documentation demonstrating the most recent assessment on the implementation of the Local School Wellness Policy has been made available to the public.

Annual Notification of Policy

The District will actively inform families and the public each year of basic information about this policy, including its content, any updates to the policy and implementation status. The District will make this information available via the district website and/or district-wide communications. The District will provide as much information as possible about the school nutrition environment. This will include a summary of the School events or activities related to wellness policy implementation. Annually, the District will also publicize the name and contact information of the District officials leading and coordinating the committee, as well as information on how the public can get involved with the school wellness committee.

Triennial Progress Assessments

GENEVA COUNTY WELLNESS POLICY

At least once every three years, the District will evaluate compliance with the wellness policy to assess the implementation of the policy and include:

- The extent to which schools under the jurisdiction of the District are in compliance with the wellness policy;
- The extent to which the District's wellness policy compares to the Alliance for a Healthier Generation's model wellness policy; and
- A description of the progress made in attaining the goals of the District's wellness policy.

The position/person responsible for managing the triennial assessment and contact information is Anna Whitehead, Child Nutrition Director- whiteheada@genevacoboe.org

The DWC, in collaboration with individual schools, will monitor schools' compliance with this wellness policy.

The District will actively notify households/families of the availability of the triennial progress report.

Revisions and Updating the Policy

The DWC will update or modify the wellness policy based on the results of the Triannual School Health Index and triennial assessments and/or as District priorities change; community needs change; wellness goals are met; new health science, information, and technology emerges; and new Federal or state guidance or standards are issued. **The wellness policy will be assessed and updated as indicated at least every three years, following the triennial assessment.**

Community Involvement, Outreach and Communications

The District is committed to being responsive to community input, which begins with awareness of the wellness policy. The District will actively communicate ways in which representatives of DWC and others can participate in the development, implementation and periodic review and update of the wellness policy through a variety of means appropriate for that district. The District will also inform parents of the improvements that have been made to school meals and compliance with school meal standards, availability of child nutrition programs and how to apply, and a description of and compliance with Smart Snacks in School nutrition standards. The District will use electronic mechanisms, such as email or displaying notices on the district's website, as well as non-electronic mechanisms, such as newsletters, presentations to parents, or sending information home to parents, to ensure that all families are actively notified of the content of, implementation of, and updates to the wellness policy, as well as how to get involved and support the policy. The District will ensure that communications are culturally and linguistically appropriate to the community, and accomplished through means similar to other ways that the district and individual schools are communicating important school information with parents.

The District will actively notify the public about the content of or any updates to the wellness policy annually, at a minimum. The District will also use these mechanisms to inform the community about the availability of the annual and triennial reports.

III. Nutrition

School Meals

Our school district is committed to serving healthy meals to children, with plenty of fruits, vegetables, whole grains, and fat-free and low-fat milk; that are moderate in sodium, low in saturated fat, and have zero grams *trans* fat per serving (nutrition label or manufacturer's specification); and to meeting the nutrition needs of school children within their calorie requirements. The school meal programs aim to improve the diet and health of school children, help mitigate childhood obesity, model healthy eating to support the development of lifelong healthy eating patterns and support healthy choices while accommodating cultural food preferences and special dietary needs.

All schools within the District participate in USDA child nutrition programs, including the National School Lunch Program (NSLP), the School Breakfast Program (SBP), After School Dinner Program, Summer Feeding (SFSP), and Fresh Fruit & Vegetable Program. The District also operates additional nutrition-related programs and activities including Breakfast in the Classroom. All schools within the District are committed to offering school meals through the NSLP and SBP programs, and other applicable Federal child nutrition programs, that:

- Are accessible to all students;
- Are appealing and attractive to children;
- Are served in clean and pleasant settings;
- Meet or exceed current nutrition requirements established by local, state, and Federal statutes and regulations. (The District offers reimbursable school meals that meet [USDA nutrition standards](#).)
- Promote healthy food and beverage choices using at least ten of the following [Smarter Lunchroom techniques](#):
 - Whole fruit options are displayed in attractive bowls or baskets (instead of chaffing dishes or hotel pans).
 - Sliced or cut fruit is available daily.
 - Daily fruit options are displayed in a location in the line of sight and reach of students.
 - All available vegetable options have been given creative or descriptive names.
 - Daily vegetable options are bundled into all grab-and-go meals available to students.
 - All staff members, especially those serving, have been trained to politely prompt students to select and consume the daily vegetable options with their meal.
 - White milk is placed in front of other beverages in all coolers.
 - Alternative entrée options (e.g., salad bar, yogurt parfaits, etc.) are highlighted on posters or signs within all service and dining areas.
 - A reimbursable meal can be created in any service area available to students (e.g., salad bars, snack rooms, etc.).
 - Student surveys and taste testing opportunities are used to inform menu development, dining space decor and promotional ideas.
 - Student artwork is displayed in the service and/or dining areas.
 - Daily announcements are used to promote and market menu options.
 - Menus will be posted on the District website or individual school websites
- The District child nutrition program will accommodate students with special dietary needs.
- Students will be allowed at least 10 minutes to eat breakfast and at least 20 minutes to eat lunch, counting from the time they have received their meal and are seated
- Students are served lunch at a reasonable and appropriate time of day.
- Participation in Federal child nutrition programs will be promoted among students and families to help ensure that families know what programs are available in their children's school.

GENEVA COUNTY WELLNESS POLICY

- Local and/or regional products are incorporated into the school meal program;
- Messages about agriculture and nutrition are reinforced throughout the learning environment;
- School hosts field trips to local farms; and
- School utilizes promotions or special events, such as tastings, that highlight the local/regional products.

Staff Qualifications and Professional Development

All school nutrition program directors, managers and staff will meet or exceed hiring and annual continuing education/training requirements in the [USDA professional standards for child nutrition professionals](#). These school nutrition personnel will refer to [USDA's Professional Standards for School Nutrition Standards website](#) to search for training that meets their learning needs.

Water

To promote hydration, free, safe, unflavored drinking water will be available to all students throughout the school day* and throughout every school campus* (“school campus” and “school day” are defined in the glossary). The District will make drinking water available where school meals are served during mealtimes.

- *Water cups/jugs will be available in the cafeteria if a drinking fountain is not present.*
- *All water sources and containers will be maintained on a regular basis to ensure good hygiene and health safety standards. Such sources and containers may include drinking fountains, water jugs, hydration stations, water jets and other methods for delivering drinking water.*

Competitive Foods and Beverages

The District is committed to ensuring that all foods and beverages available to students on the school campus* during the school day* support healthy eating. The foods and beverages sold and served outside of the school meal programs (e.g., “competitive” foods and beverages) will meet the USDA Smart Snacks in School nutrition standards, at a minimum. Smart Snacks aim to improve student health and well-being, increase consumption of healthful foods during the school day and create an environment that reinforces the development of healthy eating habits. A summary of the standards and information, as well as a Guide to Smart Snacks in Schools are available at: <http://www.fns.usda.gov/healthierschoolday/tools-schools-smart-snacks>. The Alliance for a Healthier Generation provides a set of tools to assist with implementation of Smart Snacks available at www.foodplanner.healthiergeneration.org.

The District does not allow outside food products brought into the cafeteria in the original boxes or bags; for example, McDonald's or Subway bags or Little Caesars pizza boxes. Items that are rewrapped or placed in a non-identifiable container will be acceptable. Carbonated beverages in the original container are also prohibited. It is permissible if they are placed in a thermos or other container in which they cannot be identified. The District employees will adhere to the same procedure.

GENEVA COUNTY WELLNESS POLICY

Celebrations and Rewards

All foods offered on the school campus will meet or exceed the USDA Smart Snacks in School nutrition standards including through:

1. Celebrations and parties. The district will provide a list of healthy party ideas to parents and teachers, including non-food celebration ideas. Healthy party ideas are available from the [Alliance for a Healthier Generation](#) and from the [USDA](#).
2. Classroom snacks brought by parents. The District will provide to parents a [list of foods and beverages that meet Smart Snacks](#) nutrition standards.
3. Rewards and incentives. The District will provide teachers and other relevant school staff a [list of alternative ways to reward children](#). Foods and beverages will not be used as a reward, or withheld as punishment for any reason, such as for performance or behavior.
[Meets Healthy Schools Program Silver-level criteria]

Fundraising

Foods and beverages that meet or exceed the USDA Smart Snacks in Schools nutrition standards may be sold through fundraisers on the school campus* during the school day*. The District will make available to parents and teachers a list of healthy fundraising ideas [*examples from the [Alliance for a Healthier Generation](#) and the [USDA](#)*].

At no time may fundraisers compete with the National School Breakfast and National School Lunch Program as reinstated in the Memorandum issued June 17th, 2015 by State Superintendent of Education, Thomas R. Bice. Therefore, food-related fundraisers are not to take place one (1) hour before or one (1) hour after meal service has ended per meal service schedule for all grades at the school. Exempt fundraisers involve food items that do not meet the Smart Snack nutrition standards during school hours. Fundraisers requests should be submitted and listed on a principal form for approval and filed at the school with a copy provided to the CNP Director. The full list of fundraisers for the first ½ of school year should be provided to the principal by organizations on or before July 1 and the second half of the school year submitted to the principal on or before January 1st. Exempt fundraisers may not be sold one (1) hour before meal periods, during meal periods and one (1) hour after meal periods. For example at School A, if lunch meal schedule is 11:00-1:00, fundraisers may be sold from 9:00 AM to 10:00AM and after 2:00 PM. Exempt Fundraisers may not take place more than 30 times per school per school year.

The DWC will encourage the use of non-food fundraisers and those promoting physical activity (such as walk-a-thons, jump rope for heart, fun runs, etc.).

Nutrition Promotion

Nutrition promotion and education positively influence lifelong eating behaviors by using evidence-based techniques and nutrition messages, and by creating food environments that encourage healthy nutrition choices and encourage participation in school meal programs. Students and staff will receive consistent nutrition messages throughout schools, classrooms, gymnasiums, and cafeterias. Nutrition promotion also includes marketing and advertising nutritious foods and beverages to students and is most effective when implemented consistently

GENEVA COUNTY WELLNESS POLICY

through a comprehensive and multi-channel approach by school staff, teachers, parents, students and the community.

The District will promote healthy food and beverage choices for all students throughout the school campus, as well as encourage participation in school meal programs. This promotion will occur through at least:

- Implementing at least ten or more evidence-based healthy food promotion techniques through the school meal programs using [Smarter Lunchroom techniques](#); and
- Ensuring 100% of foods and beverages promoted to students meet the USDA Smart Snacks in School nutrition standards. Additional promotion techniques that the District and individual schools may use are available at <http://www.foodplanner.healthiergeneration.org/>.

Nutrition Education

The District will teach, model, encourage and support healthy eating by all students. Schools will provide nutrition education and engage in nutrition promotion that:

- Is designed to provide students with the knowledge and skills necessary to promote and protect their health;
- Is part of not only health education classes, but also integrated into other classroom instruction through subjects such as math, science, language arts, social sciences and elective subjects;
- Includes enjoyable, developmentally-appropriate, culturally-relevant and participatory activities, such as cooking demonstrations or lessons, promotions, taste-testing, farm visits and school gardens;
- Promotes fruits, vegetables, whole-grain products, low-fat and fat-free dairy products and healthy food preparation methods;
- Emphasizes caloric balance between food intake and energy expenditure (promotes physical activity/exercise);
- Links with school meal programs, cafeteria nutrition promotion activities, school gardens, Farm to School programs, other school foods and nutrition-related community services;
- Teaches media literacy with an emphasis on food and beverage marketing; and
- Includes nutrition education training for teachers and other staff.
- Include nutrition education training for teachers and other staff.
- In elementary schools, nutrition education will be offered at each grade level as part of a sequential, comprehensive, standards-based health education curriculum that meets state and national standards

Privacy

The District will take all steps necessary to protect the privacy of students who receive or qualify for free and reduced meals through use of POS software to ensure students are able to receive meals without identification by peers. Students with unpaid balances are allowed a regular meal and reminded to bring additional lunch money.

Free/Reduced

Free & Reduced applications are given to students at the beginning of each school year or upon enrollment in school. Forms are always available at the county office or in each local school office.

Essential Healthy Eating Topics in Health Education

The District will include in the health education curriculum a minimum of 12 of the following essential topics on healthy eating:

- Relationship between healthy eating and personal health and disease prevention
- Food guidance from [MyPlate](#)
- Reading and using FDA's nutrition fact labels
- Eating a variety of foods every day
- Balancing food intake and physical activity
- Eating more fruits, vegetables and whole grain products
- Choosing foods that are low in fat, saturated fat, and cholesterol and do not contain *trans* fat
- Choosing foods and beverages with little added sugars
- Eating more calcium-rich foods
- Preparing healthy meals and snacks
- Risks of unhealthy weight control practices
- Accepting body size differences
- Food safety
- Importance of water consumption
- Importance of eating breakfast
- Making healthy choices when eating at restaurants
- Eating disorders
- [The Dietary Guidelines for Americans](#)
- Reducing sodium intake
- Social influences on healthy eating, including media, family, peers and culture
- How to find valid information or services related to nutrition and dietary behavior
- How to develop a plan and track progress toward achieving a personal goal to eat healthfully
- Resisting peer pressure related to unhealthy dietary behavior
- Influencing, supporting, or advocating for others' healthy dietary behavior

<https://www.fns.usda.gov/tn/team-nutrition> provides free nutrition education and promotion materials, including standards based nutrition education curricula and lesson plans, posters, interactive games, menu graphics, and more.

Food and Beverage Marketing in Schools

The District is committed to providing a school environment that ensures opportunities for all students to practice healthy eating and physical activity behaviors throughout the school day while minimizing commercial distractions. The District strives to teach students how to make informed choices about nutrition, health and physical activity. These efforts will be weakened if students are subjected to advertising on District property that contains messages inconsistent with the health information the District is imparting through nutrition education and health promotion efforts. It is the intent of the District to protect and promote student's health by permitting advertising and marketing for only those foods and beverages that are permitted to be sold on the school campus, consistent with the District's wellness policy.

Any foods and beverages marketed or promoted to students on the school campus* during the school day* will meet or exceed the USDA Smart Snacks in School nutrition standards. Food and beverage marketing is defined as advertising and other promotions in schools. Food and beverage marketing often includes an oral, written, or graphic statements made for the purpose of promoting the sale of a food or beverage product made by the producer, manufacturer, seller or any other entity with a commercial interest in the product.¹⁵

IV. Physical Activity

Children and adolescents should participate in at least 60 minutes of physical activity every day. A substantial percentage of students' physical activity can be provided through a comprehensive school physical activity program (CSPAP). A CSPAP reflects strong coordination and synergy across all of the components: quality physical education as the foundation; physical activity before, during and after school; staff involvement and family and community engagement and the district is committed to providing these opportunities. Schools will ensure that these varied physical activity opportunities are in addition to, and not as a substitute for, physical education (addressed in "Physical Education" subsection). All schools in the district will be encouraged to participate in *Let's Move! Active Schools* (www.letsmoveschools.org) in order to successfully address all CSPAP areas.

To the extent practicable, the District will ensure that its grounds and facilities are safe and that equipment is available to students to be active. The District will conduct necessary inspections and repairs.

Physical Education

The District will provide students with physical education, using an age-appropriate, sequential physical education curriculum consistent with national and state standards for physical education. The physical education curriculum will promote the benefits of a physically active lifestyle and will help students develop skills to engage in lifelong healthy habits, as well as incorporate essential health education concepts (discussed in the "*Essential Physical Activity Topics in Health Education*" subsection). The curriculum will support the essential components of physical education.

All students will be provided equal opportunity to participate in physical education classes. The District will make appropriate accommodations to allow for equitable participation for all students and will adapt physical education classes and equipment as necessary.

All District elementary students (K-5) in each grade will receive physical education for at least 150 minutes per week throughout the school year. This is equivalent to 30 minutes per day.

GENEVA COUNTY WELLNESS POLICY

All District middle school students (6-8) in each grade will receive physical education for at least 250 minutes per week throughout the school year. This is equivalent to 50 minutes per day.

All District high school students (9-12) are required to take the equivalent of one academic year of physical education.

The District physical education program will promote student physical fitness through individualized fitness and activity assessments Alabama Fitness Test and will use criterion-based reporting for each student.

All physical education teachers in Geneva County Schools will be required to participate in at least a once a year professional development in education

All physical education classes in Geneva County Schools are taught by licensed teachers who are certified or endorsed to teach physical education

Essential Physical Activity Topics in Health Education

The District will aim to include in the health education curriculum the following essential topics on physical activity: when health education is taught OR semesters when student is enrolled in health or physical education.

- The physical, psychological, or social benefits of physical activity
- How physical activity can contribute to a healthy weight
- How physical activity can contribute to the academic learning process
- How an inactive lifestyle contributes to chronic disease
- Health-related fitness, that is, cardiovascular endurance, muscular endurance, muscular strength, flexibility, and body composition
- Differences between physical activity, exercise and fitness
- Phases of an exercise session, that is, warm up, workout and cool down
- Overcoming barriers to physical activity
- Decreasing sedentary activities, such as TV watching
- Opportunities for physical activity in the community
- Preventing injury during physical activity
- Weather-related safety, for example, avoiding heat stroke, hypothermia and sunburn while being physically active
- How much physical activity is enough, that is, determining frequency, intensity, time and type of physical activity
- Developing an individualized physical activity and fitness plan
- Monitoring progress toward reaching goals in an individualized physical activity plan
- Dangers of using performance-enhancing drugs, such as steroids
- Social influences on physical activity, including media, family, peers and culture
- How to find valid information or services related to physical activity and fitness
- How to influence, support, or advocate for others to engage in physical activity
- How to resist peer pressure that discourages physical activity.

Recess (Elementary)

All elementary schools will offer at least **15 minutes of recess** on all days during the school year This policy may be waived on early dismissal or late arrival days. If a student is losing recess as a result of a consequence, then it cannot mean being inactive. Consider

GENEVA COUNTY WELLNESS POLICY

assigning alternate recess movements like walking the track, or doing a routine (jumping jacks, jog-on-the spot). Recess will complement, not substitute, physical education class.

Outdoor recess will be offered when weather is feasible for outdoor play.

Recess will complement, not substitute, physical education class. Recess monitors or teachers will encourage students to be active, and will serve as role models by being physically active alongside the students whenever feasible.

Classroom Physical Activity Breaks (Elementary and Secondary)

The District recognizes that students are more attentive and ready to learn if provided with periodic breaks when they can be physically active or stretch. Thus, students will be offered periodic opportunities to be active or to stretch throughout the day on all or most days during a typical school week. The District recommends teachers provide short (3-5-minute) physical activity breaks to students during and between classroom time at least three days per week. These physical activity breaks will complement, not substitute, for physical education class, recess, and class transition periods.

The District will provide resources and links to resources, tools, and technology with ideas for classroom physical activity breaks. Resources and ideas are available through [USDA](#) and the [Alliance for a Healthier Generation](#).

Active Academics

Teachers will incorporate movement and kinesthetic learning approaches into “core” subject instruction when possible (e.g., science, math, language arts, social studies and others) and do their part to limit sedentary behavior during the school day.

The District will support classroom teachers incorporating physical activity and employing kinesthetic learning approaches into core subjects by providing annual professional development opportunities and resources, including information on leading activities, activity options, as well as making available background material on the connections between learning and movement.

Teachers will serve as role models by being physically active alongside the students whenever feasible.

Before and After School Activities

The District offers opportunities for students to participate in physical activity either before and/or after the school day (or both) through a variety of methods. The District will encourage students to be physically active before and after school by: physical activity clubs, physical activity in aftercare, varsity sports.

Active Transport

The District will support active transport to and from school, such as walking or biking. The District will encourage this behavior by engaging in the following of the activities below; including but not limited to:

- Designate safe or preferred routes to school
- Secure storage facilities for bicycles and helmets (e.g., shed, cage, fenced area)
- Use crossing guards
- Use crosswalks on streets leading to schools

V. Other Activities that Promote Student Wellness

The District will integrate wellness activities across the entire school setting, not just in the cafeteria, other food and beverage venues and physical activity facilities. The District will coordinate and integrate other initiatives related to physical activity, physical education, nutrition and other wellness components so all efforts are complementary, not duplicative, and work towards the same set of goals and objectives promoting student well-being, optimal development and strong educational outcomes.

Schools in the District are encouraged to coordinate content across curricular areas that promote student health, such as teaching nutrition concepts in mathematics, with consultation provided by either the school or the District's curriculum experts.

All efforts related to obtaining federal, state or association recognition for efforts, or grants/funding opportunities for healthy school environments will be coordinated with and complementary of the wellness policy, including but not limited to ensuring the involvement of the DWC/SWC.

All school-sponsored events will adhere to the wellness policy guidelines. All school-sponsored wellness events will include physical activity and healthy eating opportunities when appropriate.

Community Partnerships

The District will *develop* relationships with community partners (e.g., hospitals, universities/colleges, local businesses, SNAP-Ed providers and coordinators, etc.) in support of this wellness policy's implementation. Existing and new community partnerships and sponsorships will be evaluated to ensure that they are consistent with the wellness policy and its goals.

Community Health Promotion and Family Engagement

The District will promote to parents/caregivers, families, and the general community the benefits of and approaches for healthy eating and physical activity throughout the school year. Families will be informed and invited to participate in school-sponsored activities and will receive information about health promotion efforts.

Staff Wellness and Health Promotion

The District promotes staff member participation in health promotion programs and will support programs for staff members on healthy eating/weight management that are accessible and free or low-cost.

Schools in the District will be encouraged to implement strategies to support staff in actively promoting and modeling healthy eating and physical activity behaviors. Examples of strategies schools may use, as well as specific actions staff members can take, include

GENEVA COUNTY WELLNESS POLICY

- Scale Back Alabama
- Health Challenges
- Participating in the PEEHIP “Team up for Wellness” Health Screens and Wellness Program
- Promoting Healthy Eating options in the Employee Breakroom/Teacher’s Lounge

Professional Learning

When feasible, the District will offer annual professional learning opportunities and resources for staff to increase knowledge and skills about promoting healthy behaviors in the classroom and school (e.g., increasing the use of kinesthetic teaching approaches or incorporating nutrition lessons into math class). Professional learning will help District staff understand the connections between academics and health and the ways in which health and wellness are integrated into ongoing district reform or academic improvement plans/efforts.

GENEVA COUNTY WELLNESS POLICY

Glossary:

Extended School Day – the time during, before and afterschool that includes activities such as clubs, intramural sports, band and choir practice, drama rehearsals and more.

School Campus - areas that are owned or leased by the school and used at any time for school-related activities, including on the outside of the school building, school buses or other vehicles used to transport students, athletic fields and stadiums (e.g., on scoreboards, coolers, cups, and water bottles), or parking lots.

School Day – the time between midnight the night before to 30 minutes after the end of the instructional day.

Triennial – recurring every three years.

- ¹ Bradley, B, Green, AC. Do Health and Education Agencies in the United States Share Responsibility for Academic Achievement and Health? A Review of 25 years of Evidence About the Relationship of Adolescents' Academic Achievement and Health Behaviors, *Journal of Adolescent Health*. 2013; 52(5):523–532.
- ² Meyers AF, Sampson AE, Weitzman M, Rogers BL, Kayne H. School breakfast program and school performance. *American Journal of Diseases of Children*. 1989;143(10):1234–1239.
- ³ Murphy JM. Breakfast and learning: an updated review. *Current Nutrition & Food Science*. 2007; 3:3–36.
- ⁴ Murphy JM, Pagano ME, Nachmani J, Sperling P, Kane S, Kleinman RE. The relationship of school breakfast to psychosocial and academic functioning: Cross-sectional and longitudinal observations in an inner-city school sample. *Archives of Pediatrics and Adolescent Medicine*. 1998;152(9):899–907.
- ⁵ Pollitt E, Mathews R. Breakfast and cognition: an integrative summary. *American Journal of Clinical Nutrition*. 1998; 67(4), 804S–813S.
- ⁶ Rampersaud GC, Pereira MA, Girard BL, Adams J, Metz J. Breakfast habits, nutritional status, body weight, and academic performance in children and adolescents. *Journal of the American Dietetic Association*. 2005;105(5):743–760, quiz 761–762.
- ⁷ Taras, H. Nutrition and student performance at school. *Journal of School Health*. 2005;75(6):199–213.
- ⁸ MacLellan D, Taylor J, Wood K. Food intake and academic performance among adolescents. *Canadian Journal of Dietetic Practice and Research*. 2008;69(3):141–144.
- ⁹ Neumark-Sztainer D, Story M, Dixon LB, Resnick MD, Blum RW. Correlates of inadequate consumption of dairy products among adolescents. *Journal of Nutrition Education*. 1997;29(1):12–20.
- ¹⁰ Neumark-Sztainer D, Story M, Resnick MD, Blum RW. Correlates of inadequate fruit and vegetable consumption among adolescents. *Preventive Medicine*. 1996;25(5):497–505.
- ¹¹ Centers for Disease Control and Prevention. *The association between school-based physical activity, including physical education, and academic performance*. Atlanta, GA: US Department of Health and Human Services, 2010.
- ¹² Singh A, Uijtdewilligne L, Twisk J, van Mechelen W, Chinapaw M. *Physical activity and performance at school: A systematic review of the literature including a methodological quality assessment*. *Arch Pediatr Adolesc Med*, 2012; 166(1):49-55.
- ¹³ Haapala E, Poikkeus A-M, Kukkonen-Harjula K, Tompuri T, Lintu N, Väistö J, Leppänen P, Laaksonen D, Lindi V, Lakka T. *Association of physical activity and sedentary behavior with academic skills – A follow-up study among primary school children*. *PLoS ONE*, 2014; 9(9): e107031.
- ¹⁴ Hillman C, Pontifex M, Castelli D, Khan N, Raine L, Scudder M, Drollette E, Moore R, Wu C-T, Kamijo K. *Effects of the FITKids randomized control trial on executive control and brain function*. *Pediatrics* 2014; 134(4): e1063-1071.
- ¹⁵ Change Lab Solutions. (2014). *District Policy Restricting the Advertising of Food and Beverages Not Permitted to be Sold on School Grounds*. Retrieved from <http://changelabsolutions.org/publications/district-policy-school-food-ads>

GENEVA COUNTY WELLNESS POLICY



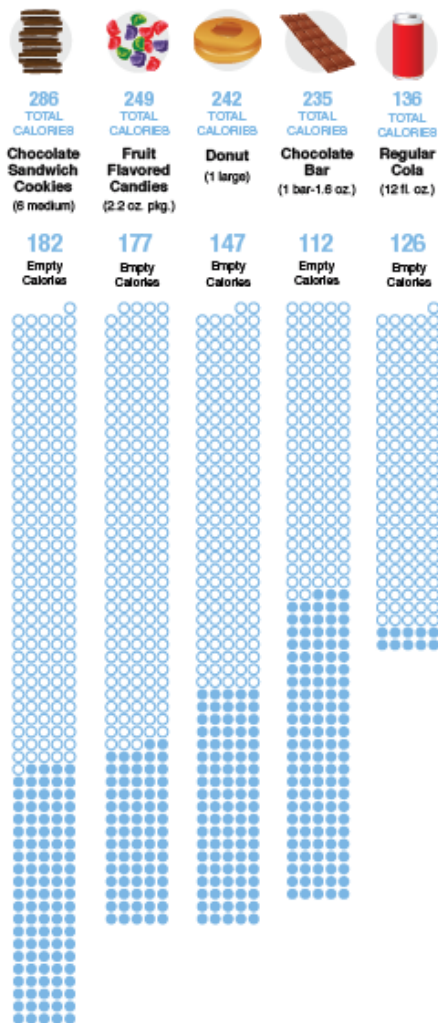
United States Department of Agriculture

SMART SNACKS IN SCHOOL

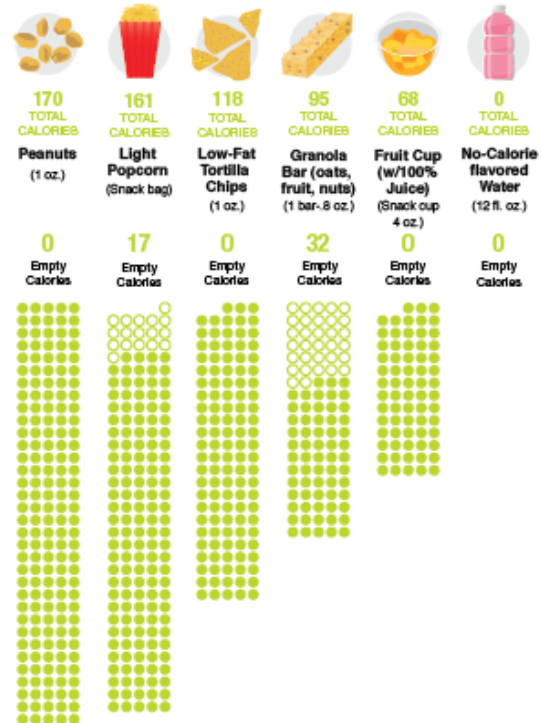
The Healthy, Hunger-Free Kids Act of 2010 requires USDA to establish nutrition standards for all foods sold in schools — beyond the federally-supported meals programs. This new rule carefully balances science-based nutrition guidelines with practical and flexible solutions to promote healthier eating on campus. The rule draws on recommendations from the Institute of Medicine, existing voluntary standards already implemented by thousands of schools around the country, and healthy food and beverage offerings already available in the marketplace.

● Equals 1 calorie ○ Shows empty calories*

Before the New Standards



After the New Standards



*Calories from food components such as added sugars and solid fats that provide little nutritional value. Empty calories are part of total calories.

USDA is an equal opportunity provider and employer.



What are the Smart Snacks Standards for foods?

To qualify as a Smart Snack, a snack or entrée must first meet the general nutrition standards:

- Be a grain product that contains 50 percent or more whole grains by weight (have a whole grain as the first ingredient); or
- Have as the first ingredient a fruit, a vegetable, a dairy product, or a protein food; or
- Be a combination food that contains at least ¼ cup of fruit and/or vegetable; and
- The food must meet the nutrient standards for calories, sodium, sugar, and fats:

Nutrient	Snack	Entrée
Calories	200 calories or less	350 calories or less
Sodium	200 mg or less	480 mg or less
Total Fat	35% of calories or less	35% of calories or less
Saturated Fat	Less than 10% of calories	Less than 10% of calories
Trans Fat	0 g	0 g
Sugar	35% by weight or less	35% by weight or less