



Study for a
**Comprehensive CTE High School at
Lake Taylor HS**

COMMUNITY UPDATE & WORKSESSION

December 11, 2025



Study Team



Norfolk Public Schools

Project Steering Committee

- Dr. James Pohl, Superintendent
- Kenyetta Goshen, Senior Director of CTE & Adult Ed
- Dr. Brandon Bell, Principal of Norfolk Technical Center
- Dr. Latesha Wade-Jenkins, Principal of Lake Taylor HS
- Bruce Brady, Executive Director of Curriculum & Instruction
- Tonya Harvey, Senior Coordinator CTE
- Jeremy Clark, Senior Coordinator Secondary English
- Glenda Walter, Learning Support - Special Education
- Tisha Jones, Senior Coordinator of Secondary Mathematics

LTHS Staff, Instructors, Students, Parents

NTC Staff, Instructors, Students, Parents

NPS CTE Advisory Committee

Project Study Team

- Duane Harver, RRMM Architects
- Rob Berz, RRMM Architects
- Amy Yurko, BrainSpaces
- Sallie Means, BrainSpaces
- Jonathan Walesczyk, Speight Marshall Francis
- Celia Polman, Thompson Consulting Engineers
- Robyn Niss, Kimley Horn and Associates

Comprehensive CTE High School at Lake Taylor HS

- Study Scope
- Stakeholder Sessions & Facility Analysis
- Key Findings
- Emerging Vision
- Program
- Concept Plan
- Project Timeline

Comprehensive CTE High School at Lake Taylor HS

- **Study Scope**

- Explore combining NTC and LTHS.
- Identify CTE programs to accommodate.
- Provide an existing facility assessment.
- How would two programs fit together?
- Propose an approach to project phasing.
- Provide a cost estimate / project budget.
- Propose a project timeline.
- Present findings.

Comprehensive CTE High School at Lake Taylor HS

- **Stakeholder Sessions**
 - Met With Students, Teachers, Administrators, Partners
 - Groups & Individuals
 - Face-to-Face & Virtual
 - February 2025 to August 2025
- **Facility Analysis**
 - Conditions of Structure, Envelope, Systems, Site
 - Available Square Footage

Comprehensive CTE High School at Lake Taylor HS

• Key Findings

1. *Students look forward to* the engaging nature of CTE courses.
2. *Students want opportunities* presented by CTE training and certificates
3. Student engagement and **graduation rates increase** with involvement in CTE
4. Talent generated by CTE programming is **desperately needed** by the local and regional workplace
5. This project aligns directly with the NPS Strategic Plan, particularly the objective **“to increase access and opportunities to diverse learning experiences”** that promote growth and life readiness upon graduation
6. Regardless of where NTC programs reside, **improving and growing space is needed.**
7. Transportation between NTC and high schools is **a hurdle for academic and tech programs to support each other.**
8. The existing Lake Taylor facility has significant renovation needs, but **does have value** that can be capitalized on.
9. Creating a comprehensive CTE high school for 1500 students will require a **large expansion**
10. The Lake Taylor site **will accommodate growth** needed for the CTE expansion.
11. Programs change overtime, so spaces must have the **flexibility to accommodate the evolution of CTE**

Comprehensive CTE High School at Lake Taylor HS

- **Emerging Vision**

- *Reframe CTE*
- *Student Preparedness for Life Ahead*
- *Community Partnerships Support Student Success*
- *Optimized Adaptability*
- *Internal Showcase*
- *Educators as Professionals are Trained and Supported*
- *Strong School Identity and Culture*

*To be successful, the vision
must be expressed in both the
facility design and the
educational delivery.*

Comprehensive CTE High School at Lake Taylor HS

- **Recommendation**

- 1. Design and construct a phased renovation/addition to accommodate the new Lake Taylor Comprehensive CTE High School for 1250 home district students and 500 students from across school division.*
- 2. Create a new next-generation integrated curriculum and delivery model that creates not just two co-located schools but a truly comprehensive CTE high school.*
- 3. Account for 18 months of design, 40 months of construction.*

Comprehensive CTE High Lake Taylor HS

- **Program**
 - Desired CTE Programs
 - Core Learning
 - Campus Common
 - Office & Support
 - Building Services

Core Academic Classrooms & Labs

	# of Teaching Stations
Learning Studios (Regular)	20
Learning Studios (Smaller / Resource)	8
Learning Studios (Larger / LGI)	2
Science Labs - Multi-Use	8
Special Ed Self-Contained Classrooms	4
	42

PE / Music / Art

Physical Education & Athletics

	# of Teaching Stations
Main Gymnasium	1
Aux Gymnasium	1
Wrestling / Fitness / Yoga / Dance	1
Weight Room	1
Health Classroom / Team Room	1
E-Sports Studio	1
Sports Medicine Lab	1

Music

Multi-Purpose Music	1
Instrumental Music Room	1
Digital Music / Sound Lab / Music Production	1

Design / Multi-Media

Art Studios	2
Graphic Design Lab	1
Fashion Merchandizing	1
Multi-Media Studio (Web Design, Recording, Photography, etc.)	1

15

CTE Labs

Business / Marketing / Hospitality

of Teaching Stations

Comprehensive CTE High Lake Taylor HS

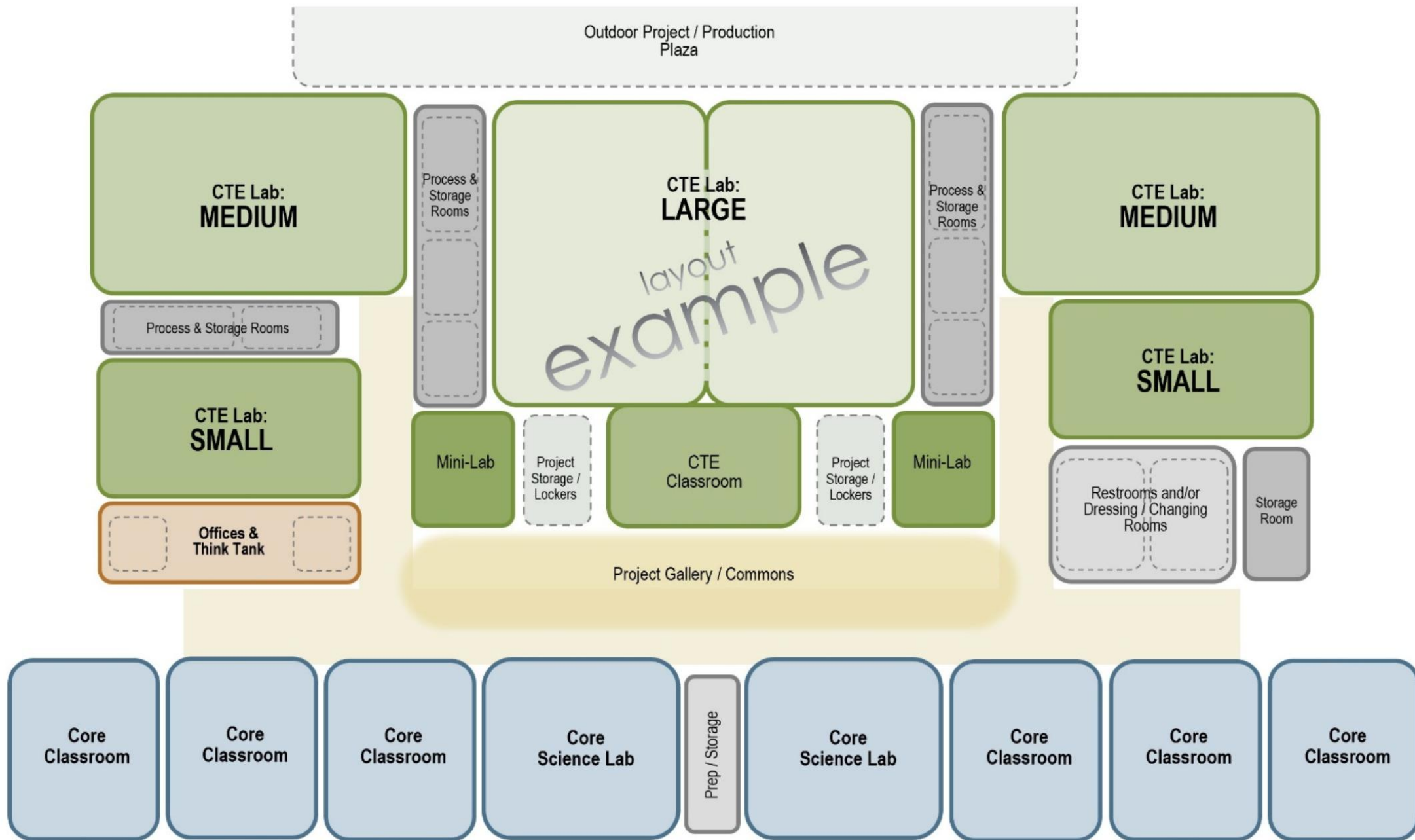
- **Program**
 - Desired CTE Programs
 - Core Learning
 - Campus Common
 - Office & Support
 - Building Services

- **Building Area**
 - 220,000 sf existing
 - 130,000 sf addition
 - 350,000 sf total

CTE Labs	Stations
Business / Marketing / Hospitality	
Business / Economics / Finance Classroom	1
Marketing / Advertising Lab	1
Entrepreneurship / Product Development	1
Cosmetology & Barbering	2
Culinary Kitchen Learning Lab & Classroom	1
IT / STEM / Transportation / Energy	
IT Applications Lab	1
Cyber Security / IT Careers lab	1
Engineering, Architecture & Design/Drawing Lab	1
Engineering Tech Lab	1
Robotics / Fabrication Lab (also used by NORSTAR)	1
Aviation & Aerospace Technology Lab	1
Renewable Energy / Alternative Energies Lab	1
Manufacturing & Construction Trades	
Construction Trades Lab & Classroom (Carpentry)	1
Construction Trades Lab & Classroom (Metals / Welding)	1
Maritime / Merchant Marine Lab	1
HVAC Lab	1
Automotive Technology Labs & shared Classroom	2
Law, Policy & Public Safety	
NJROTC Drill / Activity Area & Classroom	1
Criminal Justice / Forensic Science & Investigation Lab	1
Public Safety Lab - EMT & Fire Safety	1
Medical / Health Occupations & Education	
Nursing & Medical Assistant Classroom	1
Dental Occupations Lab	1
Pharmacy Tech Lab / Classroom	1
Veterinary Services Lab / Classroom	1
Early Childhood Lab & Classroom	1

Comprehensive CTE High School at Lake Taylor HS

- **Concept Plan**
 - Fit CTE programming within LTHS.
 - Design to support CTE fully integrated into high school.



Example of Spatial Adjacency Diagram







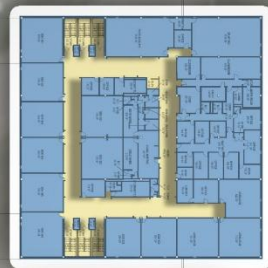
STUDENT
AND
VISITOR
PARKING
ONLY





LAKE TAYLOR
SENIOR HIGH SCHOOL





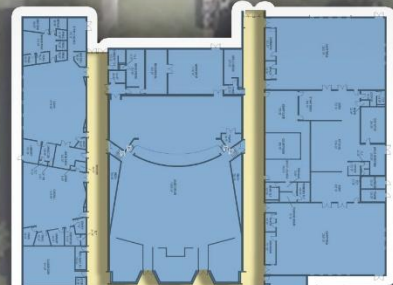
FOURTH FLOOR



THIRD FLOOR



SECOND FLOOR



FIRST FLOOR

MAIN ENTRY
GYM/EVENT
SPECIAL PROGRAMS
ENTRANCE

EXISTING FLOOR PLANS/SITE PLANS

Lake Taylor High School



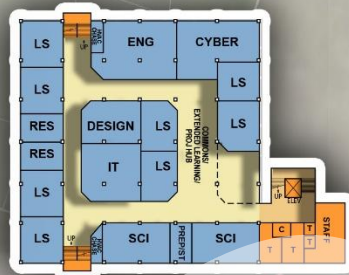
EXISTING PLAY FIELD

EXISTING PARKING

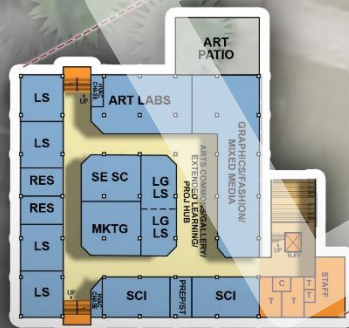
RELOCATED PLAY FIELD



FOURTH FLOOR



THIRD FLOOR



SECOND FLOOR

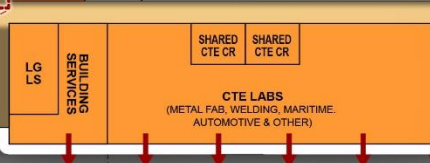
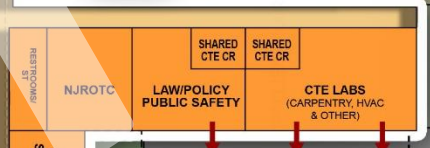
EXISTING PLAY FIELD



FIRST FLOOR

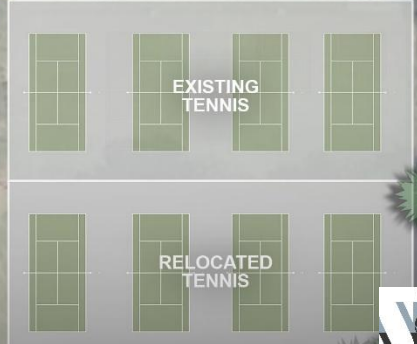


OUTDOOR DINING



COVERED WORK AREA

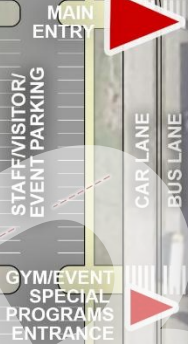
PROJECT YARD



EXISTING TENNIS

RELOCATED TENNIS

RELOCATE SOFTBALL FIELD NEXT TO BASEBALL FIELD



MAIN ENTRY

GYM/EVENT SPECIAL PROGRAMS ENTRANCE

STAFF/VISITOR/ EVENT PARKING

CAR LANE

BUS LANE

DROP OFF

STUDENT PARKING

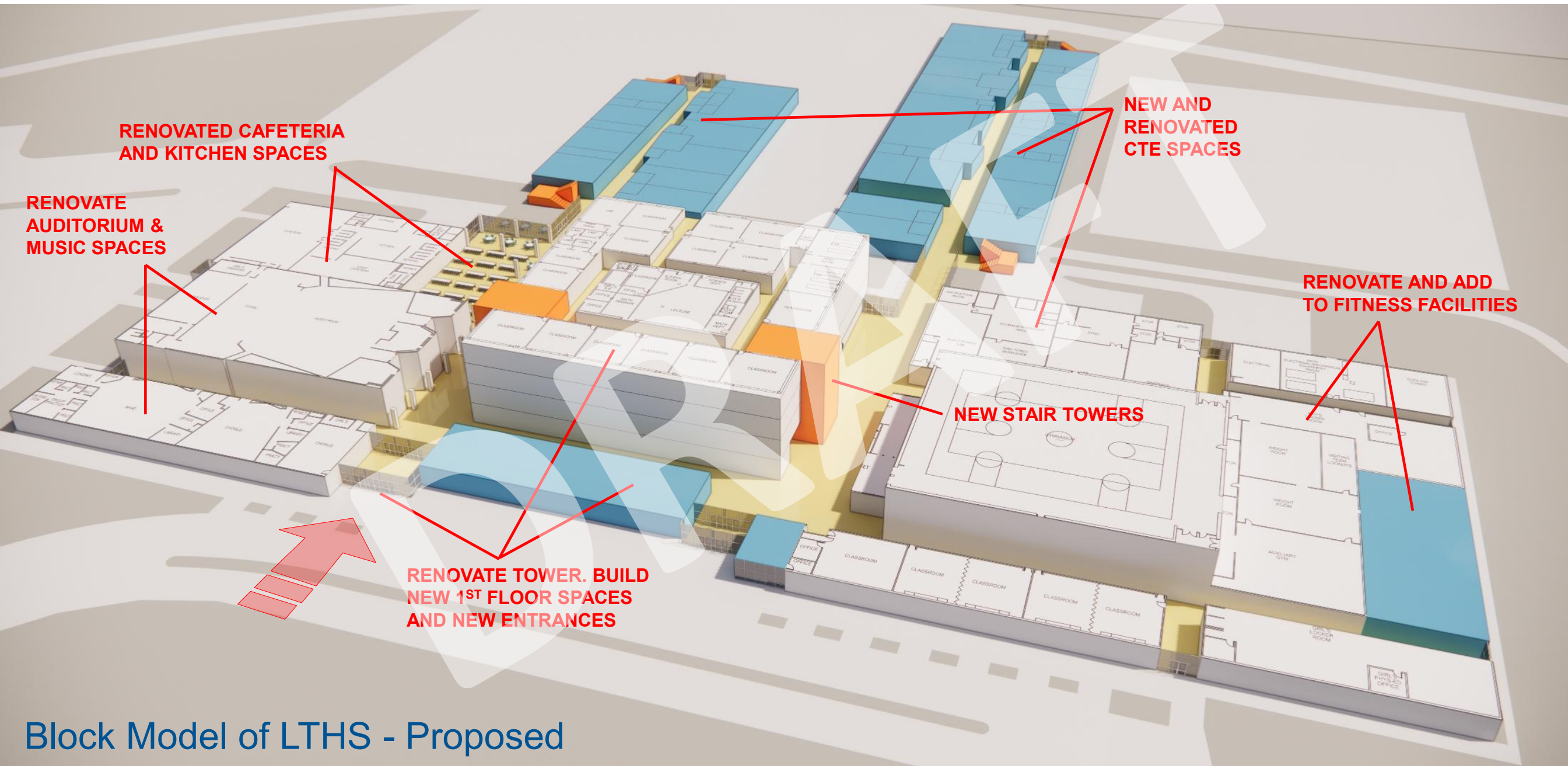
NJROTC DRILL PAD

STUDENT PARKING



CONCEPT SITE & FLOOR PLANS DRAFT

Lake Taylor High School



**RENOVATED CAFETERIA
AND KITCHEN SPACES**

**RENOVATE
AUDITORIUM &
MUSIC SPACES**

**NEW AND
RENOVATED
CTE SPACES**

**RENOVATE AND ADD
TO FITNESS FACILITIES**

NEW STAIR TOWERS

**RENOVATE TOWER. BUILD
NEW 1ST FLOOR SPACES
AND NEW ENTRANCES**

Block Model of LTHS - Proposed

WE NEED YOUR INPUT...



• Table Discussion Topics

1. Define security. How do we make LTHS an open, relaxed, collaborative environment and maintain security?
2. What qualities makes spaces that students and staff want to be in? What design features empower students to “own” their learning?
3. This building will last another 50 years at least. What will education look like in 50 years and what design features now will accommodate that future (try to think beyond operable walls and extra power outlets)?
4. Imagine the School day for an LTHS CTE student. What layout changes would you make and why?

Comprehensive CTE High School at Lake Taylor HS

- ## Possible Project Timeline

