

Chester County Intermediate Unit

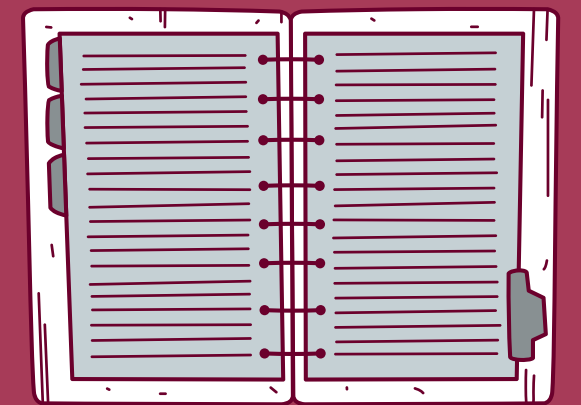
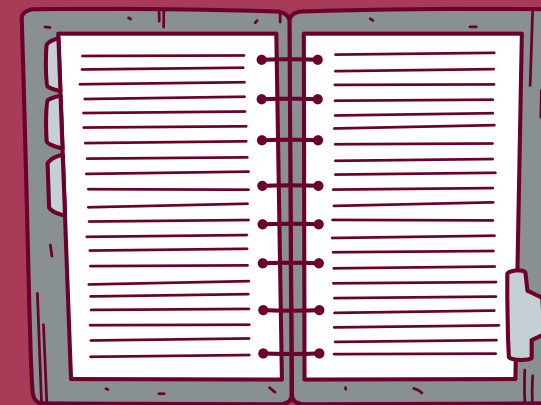
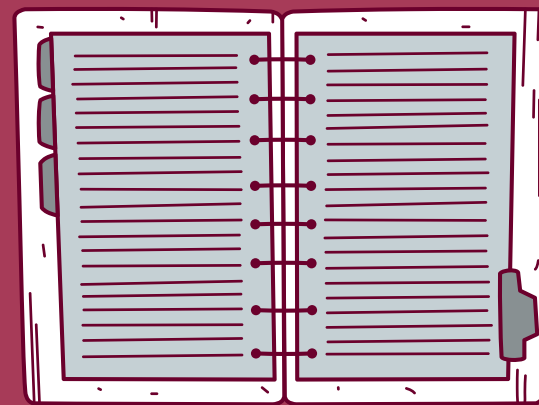
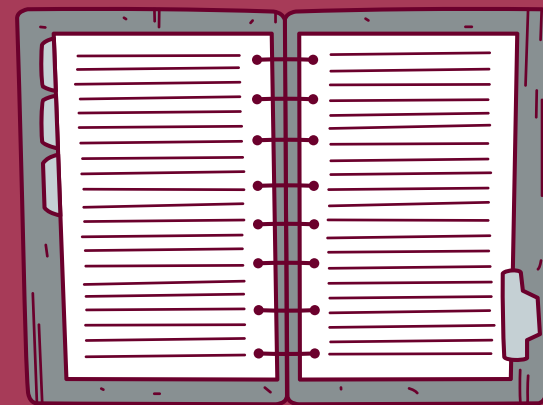
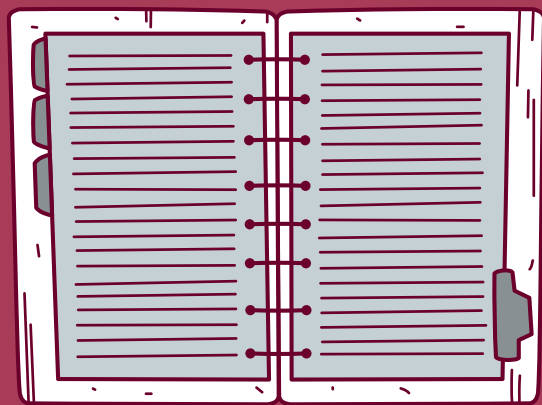


GIEP 101

Presented by Erin Cummings, Gifted Liaison

Introduction

Erin Cummings
Gifted Liaison for Chester County

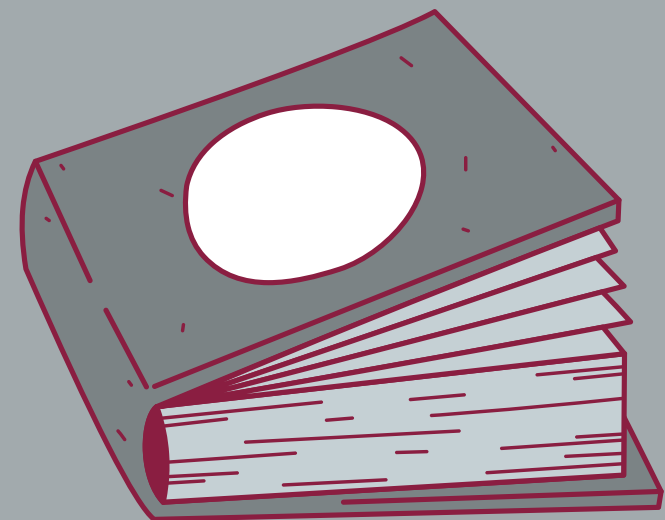
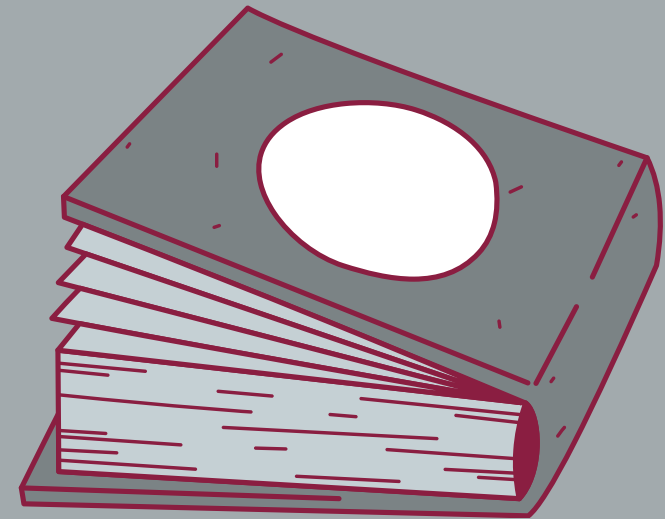
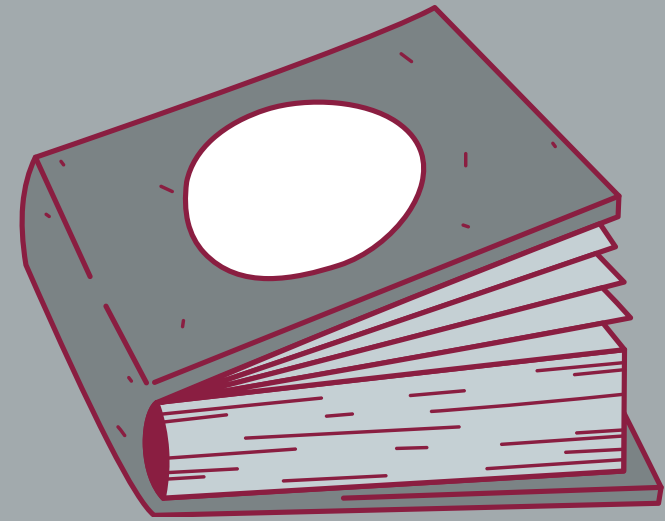




What is a Gifted Liaison?

Every Intermediate Unit appoints at least 1 Gifted Liaison

- Support for School Districts
 - Teachers and Administrators
 - Professional Development
- Available to answer questions regarding Chapter 16
 - For parents and school districts
- Can not act as an advocate for a district or parent



Agenda

- Gifted Individualized Education Plan (GIEP)
- Sections of the GIEP
- Gifted Support

Acronyms in Gifted

PTE - Permission to Evaluate

GMDT - Gifted MultiDisciplinary Team

MDE - MultiDisciplinary Evaluation

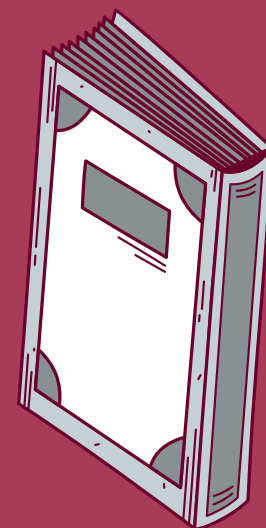
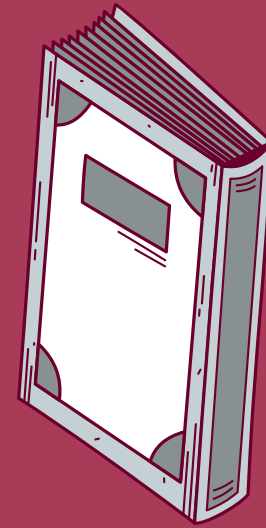
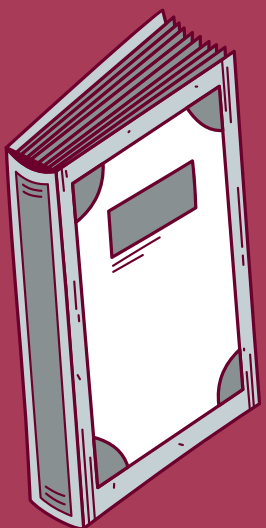
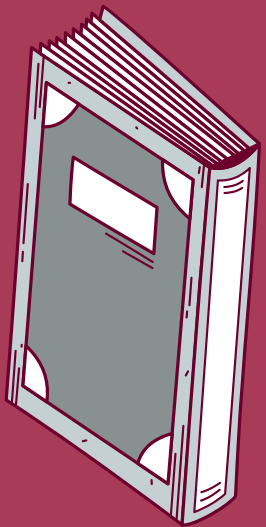
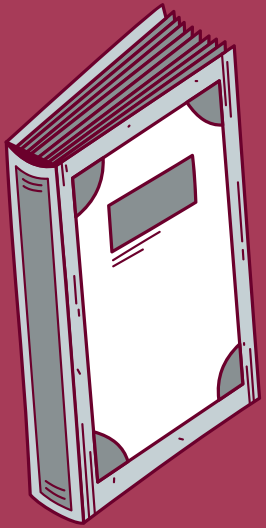
GWR - Gifted Written Report

GIEP - Gifted Individualized Education Plan

NORA - Notice of Recommended Assignment

STLO - Short Term Learning Outcomes

SDI - Specially Designed Instruction



Gifted Timeline

Permission to Evaluate

PTE is sent to parent within 10 calendar days

10 days

60 days

Multidisciplinary Evaluation

The evaluation must be completed within 60 calendar days from the date the PTE was received

Invitation To Participate

Must be sent home 10 days before the meeting

10 days

30 days

GIEP

A GIEP will be developed within 30 calendar days after the GWR is sent home

GIEP Implementation

GIEP must start no more than 10 days after the NORA is signed

10 days

5 days

NORA

A NORA must be presented to the parents at the GIEP meeting or within 5 days of the meeting

Parents

Parents have 10 calendar days to respond by mail or 5 days if at GIEP Meeting

5/10 days

*Gifted Individualized
Education Plan*



What is a GIEP?

The Gifted Individualized Education Plan (GIEP) is a strengths based document that is the framework of a student's program and consists of information that is useful in providing appropriate programming and support services for an individual student.



GIEP Sections

Present Levels

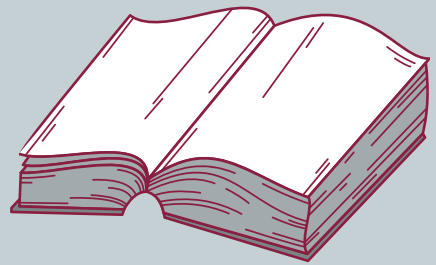
Goals

Short Term Learning Outcomes

Specially Designed Instruction

Support Services

Present Levels

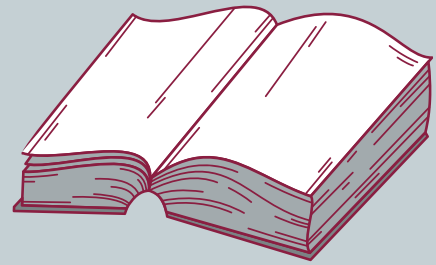


Summary of services and performance

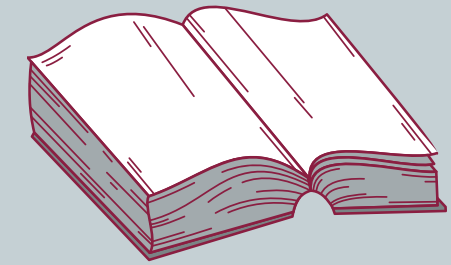
Often referred to as the PLEP

- How your student is performing
- Current Data (1-2 years at most)
- Input from teachers, student and parent
- Current Grades
- Ability & Assessment test scores
- Annual: Progress towards goals

Present Levels

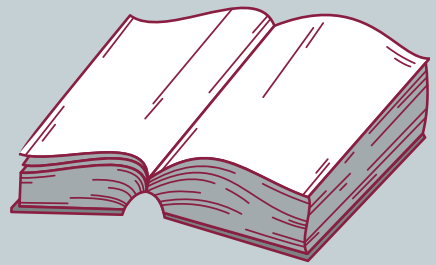


What is not in the PLEP?



Areas of need

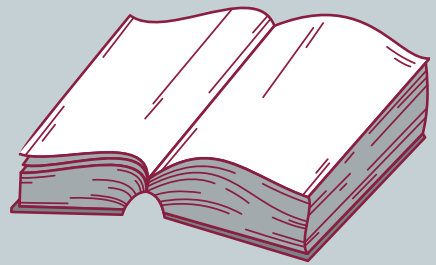
Goals



Strengths based goals

- Based on student's strengths and area(s) of giftedness
- Aligned to academic standards
- Progress is monitored annually

Short Term Learning Outcomes

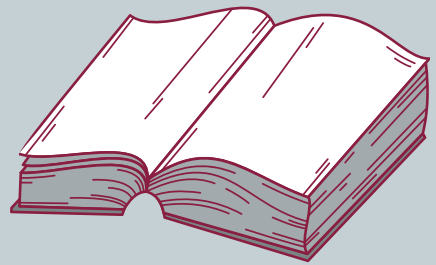


Goals broken down

Often referred to as STLO's

- At least 2 per goal
- Focuses on the components of the goal
- Can span short or long periods of time

Specially Designed Instruction

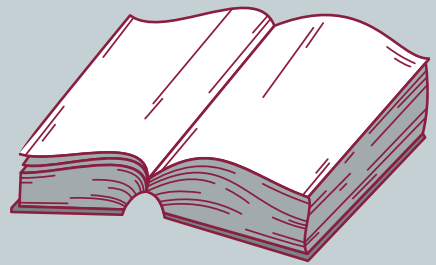


Adaptations or modifications

Often referred to as SDI's

- What will be done differently for this student
- Describes Acceleration or Enrichment details
- Clarifies who is responsible for STLOs
- Identifies where STLOs will happen
- Identifies differences in programming
- Supports the student needs in order to achieve their goals.

Specially Designed Instruction

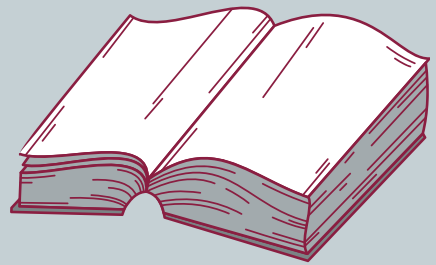


Adaptations or modifications

Often referred to as SDI's

- Specially Designed Instruction is NOT
 - Peer Tutoring
 - Extra Assignments
 - Helping Others
 - Grading Papers

Support Services



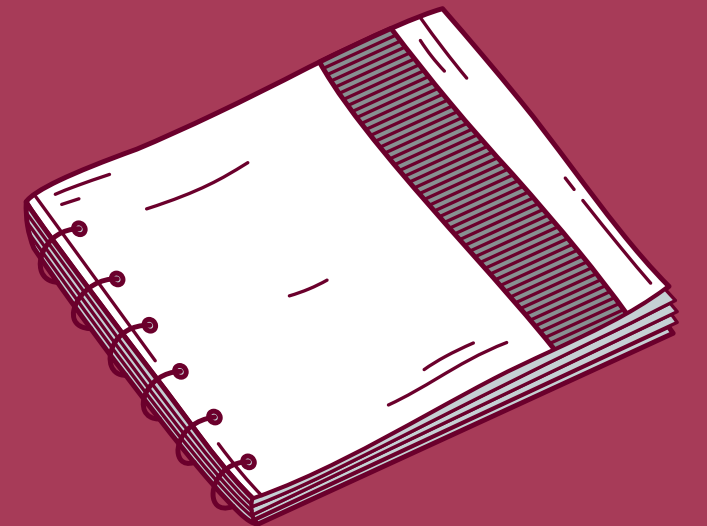
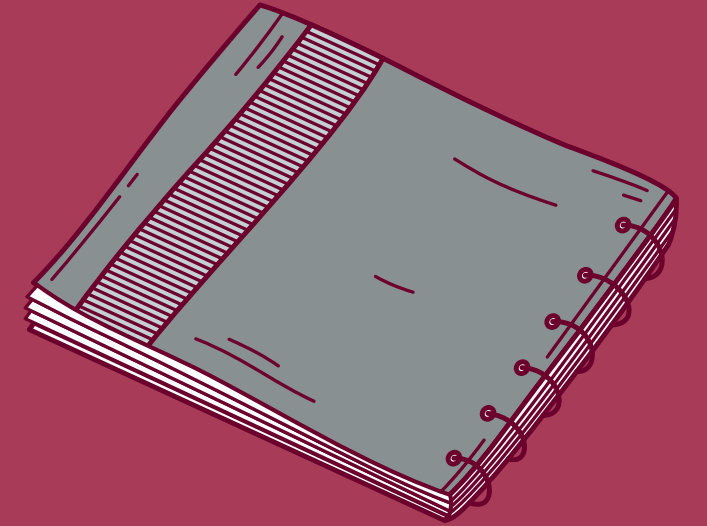
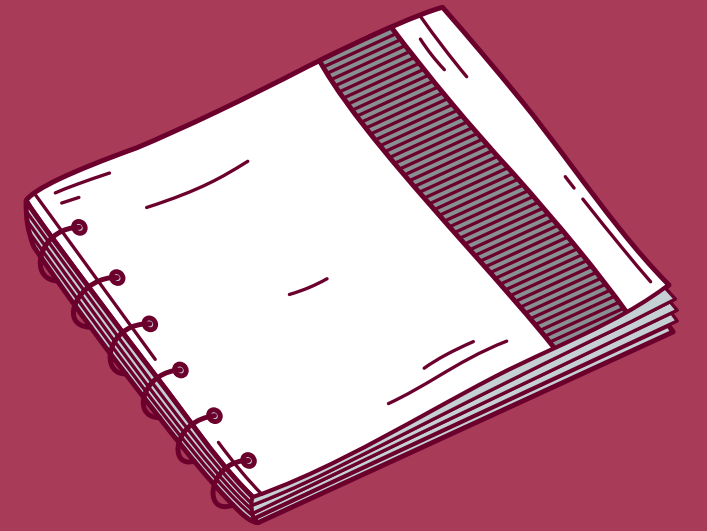
Assist a gifted student to benefit from gifted education

- Responsibility of the LEA
- Collaboration between Gifted and Regular Ed
- Settings could be the general ed classroom, gifted support classroom, another school or location
- Example: Transportation for academic classes, flexible grouping

Gifted Support

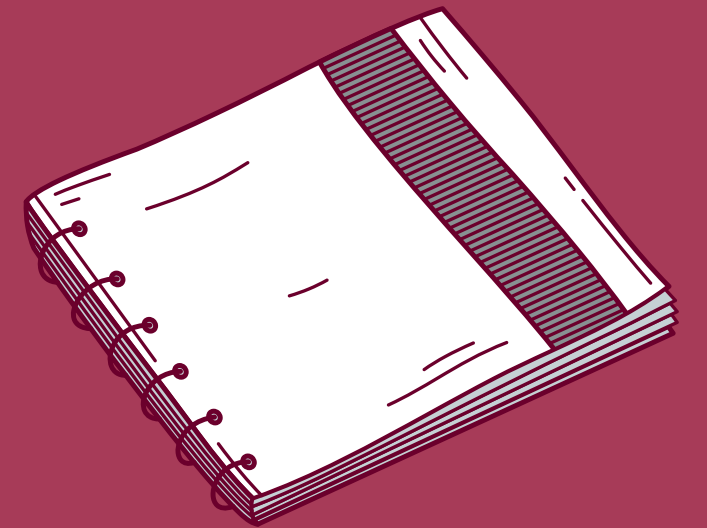
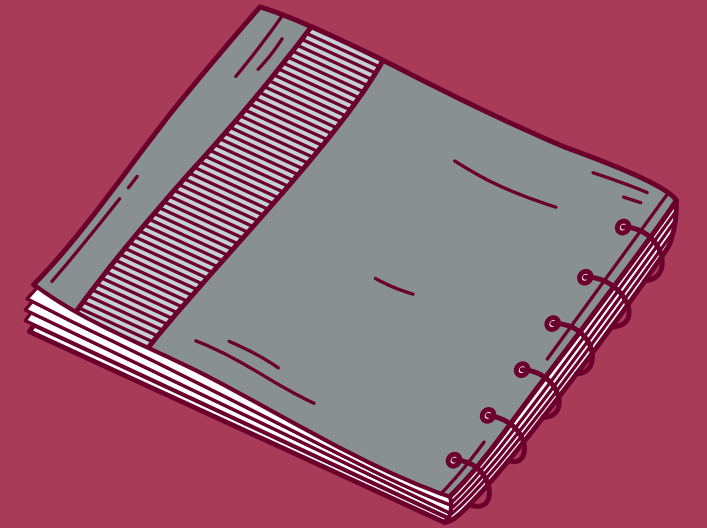
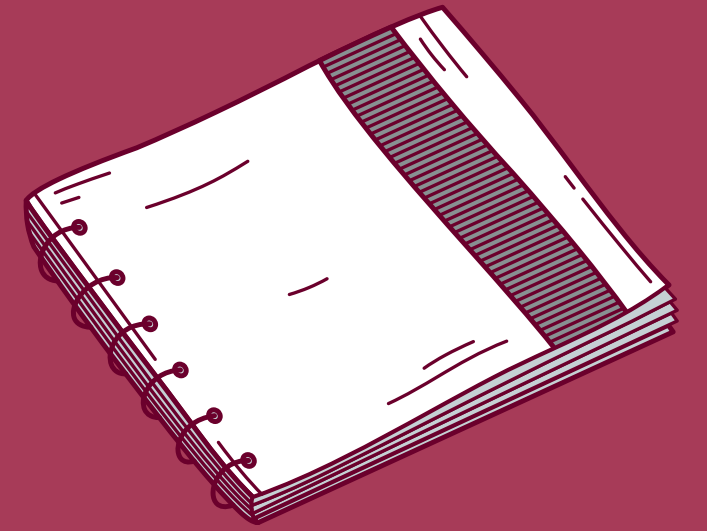
Elementary Support

- Individualized for each student
- Enrichment, acceleration or both
- Pull-out support services
- Push-in support services
- Not every student needs the same type of support
- Every district, every school, every classroom, every student is different



Elementary Support

- Focus on ELA, math and some science
- Pull-out: supports in the ATP/Gifted Classroom
 - Challenge Math, Lit Circles/Book Clubs, STEAM Projects, etc.
- Push-in: support in regular education classroom
 - ability/cluster grouping, flexible pacing, curriculum compacting, independent studies, co-teaching, etc.



Middle School Support

- Individualized for each student
- Will look different than elementary support
- Enrichment, acceleration or both
 - Directly occurs in the classroom
- Pull-out support services
- Push-in support services
- Not every student needs the same type of support
- Every district, every school, every classroom, every student is different



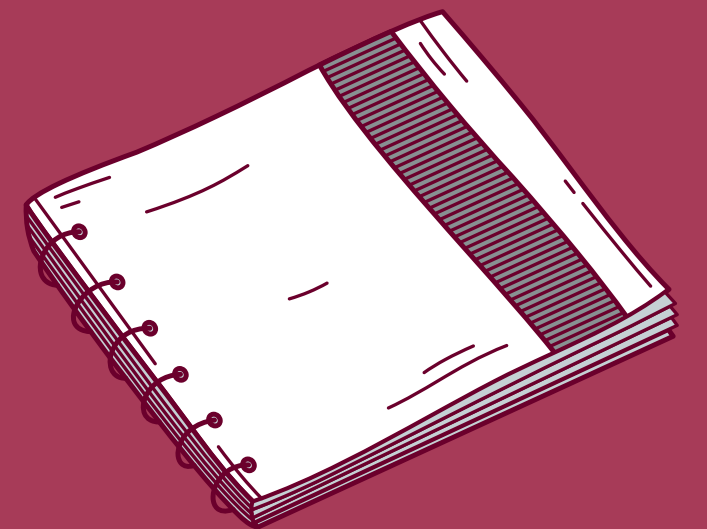
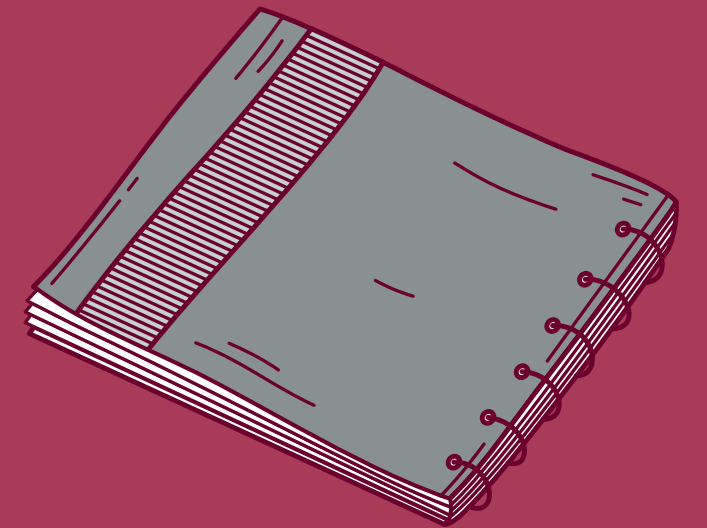
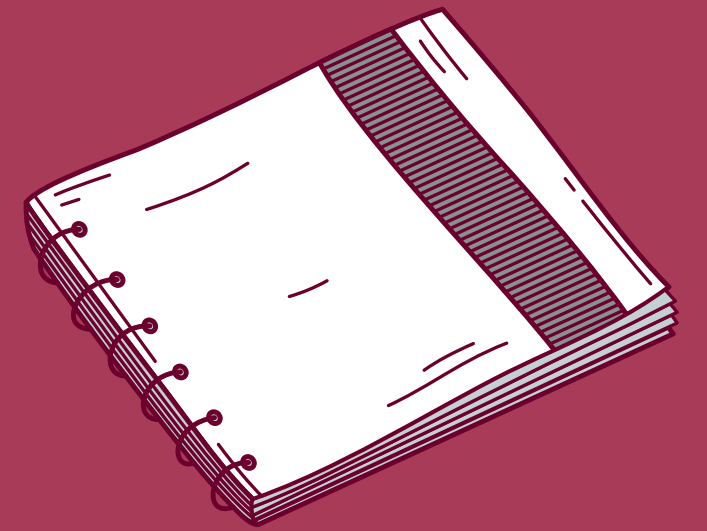
Middle School Support

- Focus on ELA, math and some science
- Directly occurs in the classroom
 - Algebra I, Honors classes
- Pull-out: supports in the ATP/Gifted Classroom
 - Forensics, Passion Projects, 21st Century Skills, competitions, field trips, etc.
- Push-in: support in regular education classroom
 - Level Up activities, cross-curricular options, ability/cluster grouping, flexible pacing, curriculum extensions, co-teaching, etc.



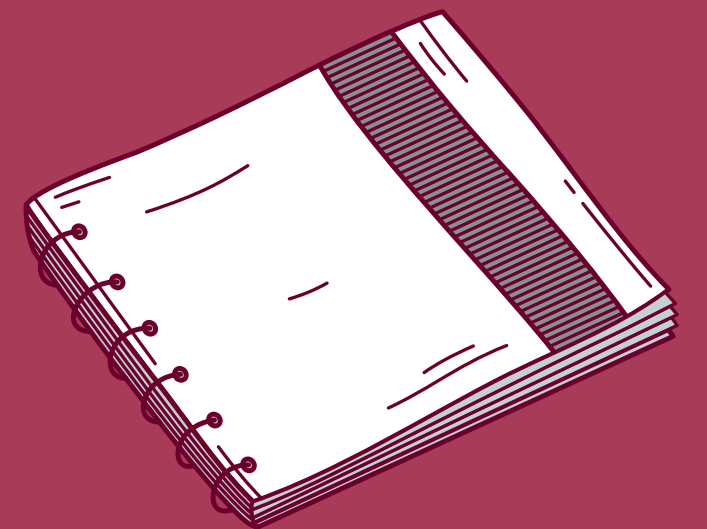
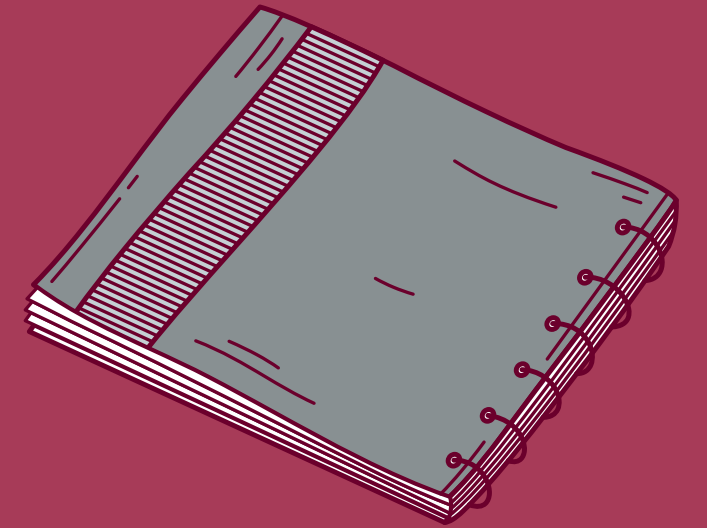
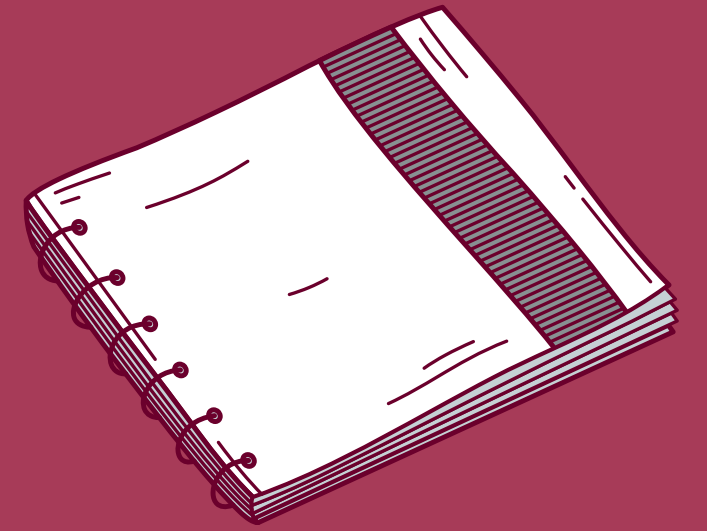
High School Support

- Individualized for each student
- Exiting from Gifted Support Services
 - General Ed. Curriculum is meeting the gifted needs of the student
 - Once gifted, always gifted*
- Not every student needs the same type of support
- Every district, every school, every classroom, every student is different



High School Support

- Focus on ELA, math, science but might include other areas of strength
- Gifted Enrichment Elective
 - 2-5 days per cycle, semester course
 - Honors weighted credit towards GPA
 - individualized projects
- Exiting from Gifted Support Services
 - very common in the HS
 - Honors, AP, IB, numerous clubs, sports commitments, employment, etc.



Thank you!

