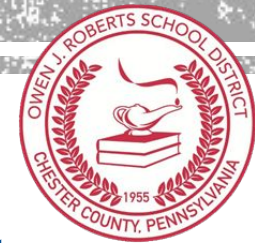


# Welcome to the OWEN J. ROBERTS SCHOOL DISTRICT SAGE Group



## **Post It!**

**Why are you interested in SAGE,  
and what are you hoping to learn?**

## **Be Prepared to Share Out**

**Name, How many children in OJRSD, are  
you interested in special education, gifted  
education, or both?**

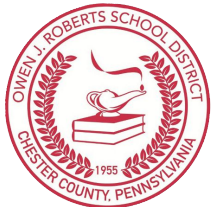
# Presentation Agenda

- What do we do?
- Who are we?
- What is MTSS?
- What is SEL?
- What are our goals and What are we working on?
- What are your questions?

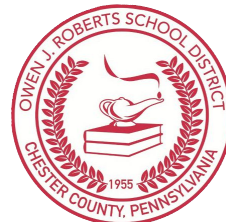
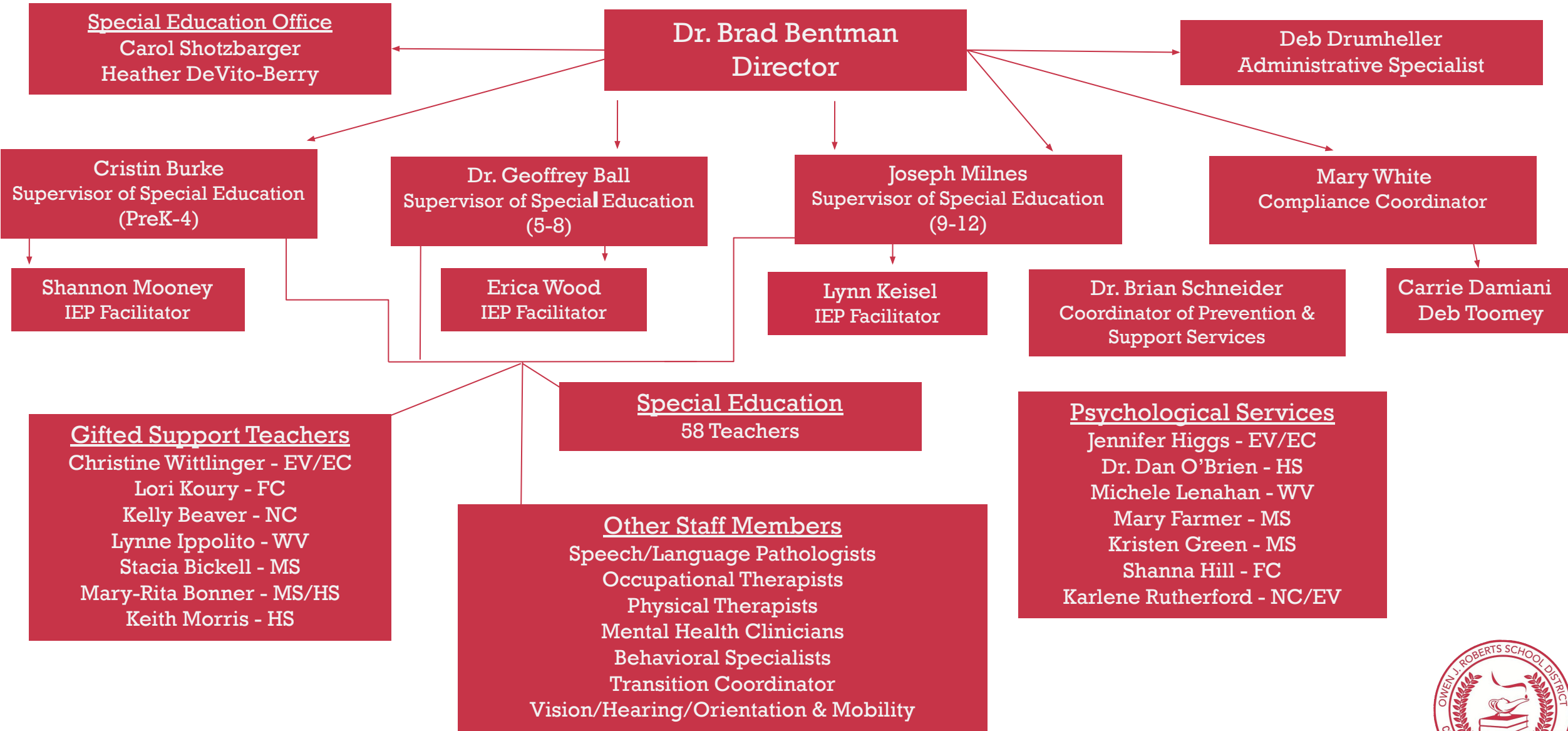


# What do we do?

- |   |  |  |
|---|--|--|
| <ul style="list-style-type: none"><li><input type="checkbox"/> Chapter 14 - Special Education</li><li><input type="checkbox"/> Chapter 15 - 504</li><li><input type="checkbox"/> Chapter 16 - Gifted Education</li><li><input type="checkbox"/> Related Services</li><li><input type="checkbox"/> School-Based ACCESS Program</li><li><input type="checkbox"/> English Language Development</li><li><input type="checkbox"/> Mental Health Strategic Plan</li><li><input type="checkbox"/> Vocational Programs (TCHS)</li></ul> | <ul style="list-style-type: none"><li><input type="checkbox"/> Psychological Services</li><li><input type="checkbox"/> Title IX Investigator</li><li><input type="checkbox"/> Truancy Program</li><li><input type="checkbox"/> Translation Services</li><li><input type="checkbox"/> District Volunteers</li><li><input type="checkbox"/> Enrollment</li><li><input type="checkbox"/> MTSS Services</li><li><input type="checkbox"/> School Counseling</li><li><input type="checkbox"/> School Health Services</li><li><input type="checkbox"/> Attendance</li><li><input type="checkbox"/> Registration</li><li><input type="checkbox"/> Homelessness Liaison</li></ul> | <ul style="list-style-type: none"><li><input type="checkbox"/> Home Schooling</li><li><input type="checkbox"/> Homebound</li><li><input type="checkbox"/> Policy</li><li><input type="checkbox"/> Student Discipline</li><li><input type="checkbox"/> Brandywine Virtual Academy (BVA)</li><li><input type="checkbox"/> Student Assistance Program (SAP)</li><li><input type="checkbox"/> Crisis Response</li><li><input type="checkbox"/> Special and Gifted Education Group (SAGE)</li></ul> |
|---|--|--|

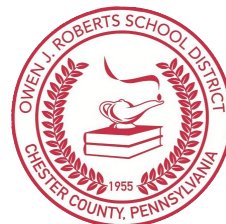
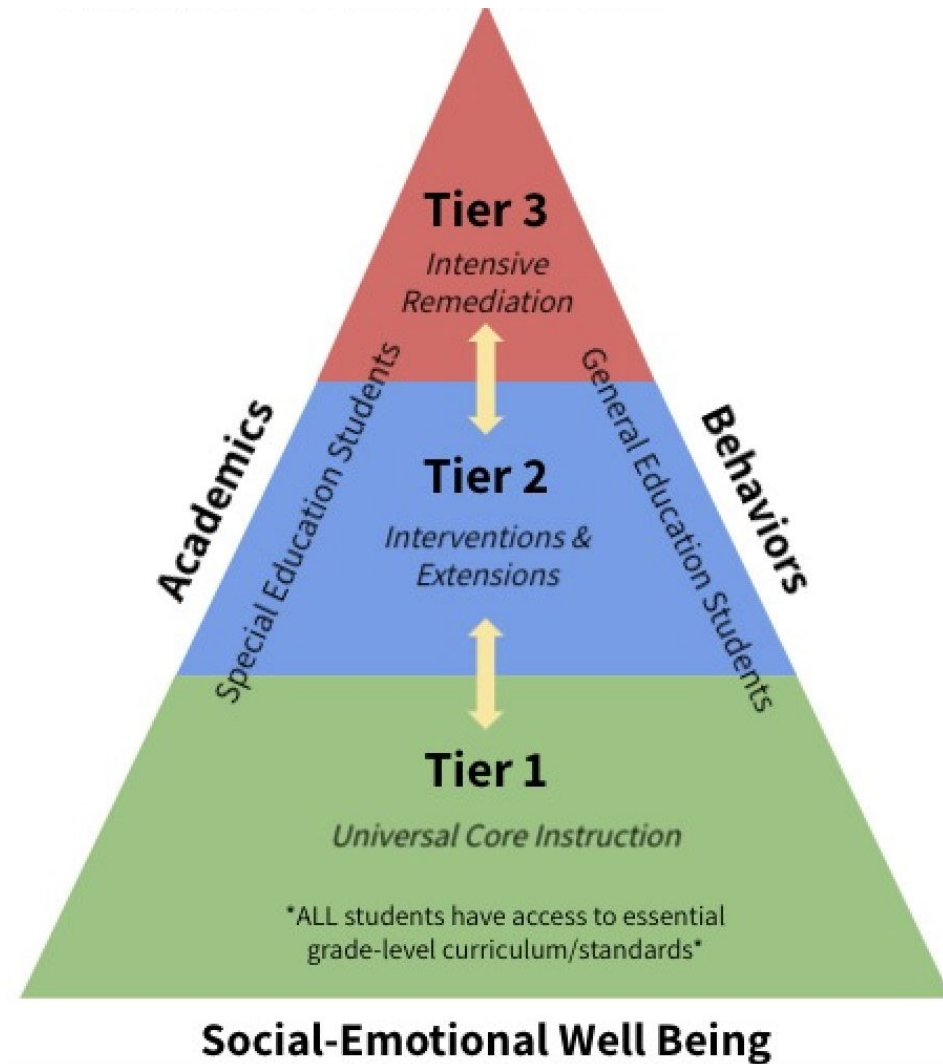


# Department of Pupil Services Organizational Chart



# Multi-Tiered System of Supports (MTSS)

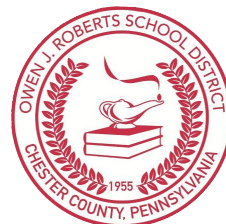
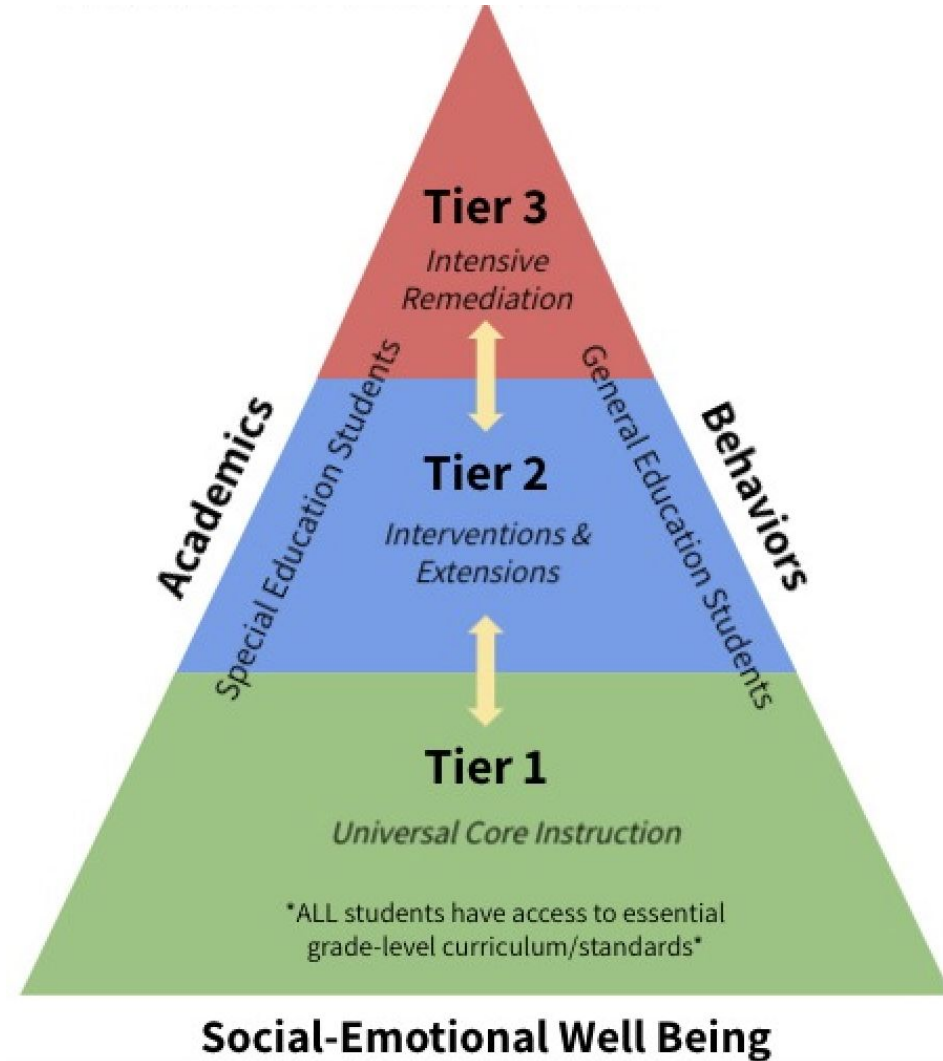
MTSS frameworks use data driven processes to match students with the supports they need (at the necessary levels of intensity) in order to maximize each student's likelihood of attaining target outcomes (academic, social-emotional, behavioral).



# Essential Components of MTSS

## Essential Components of MTSS

- ❑ Shared Ownership
- ❑ Standards-Aligned High Quality Core Instruction
- ❑ Universal Screening Practices
- ❑ Data-Based Decision Making
- ❑ Responsiveness to Intervention
- ❑ Family Engagement



# Social Emotional Learning (SEL)

## Core Competencies of SEL

- ❑ Self-Awareness
- ❑ Self-Management
- ❑ Social Awareness
- ❑ Responsible Decision Making
- ❑ Relationship Skills



- Engaging Families in the IEP Process
- An inclusive approach to special education supports for our students
- Professional Development on Autistic Support
- MTSS for Speech, Mental Health Supports, Occupational Therapy, and Executive Functioning
- New District MTSS Leadership Committee
- Each school has a well-being goal that focuses on SEL
- Year 3 of the University of Pennsylvania Mental Health Consortium will focus on the Middle School
- High school gifted Canvas page and flex period option
- School-SPIRIT Program at the High School
- SAGE :)

**What are we  
working on?**





# Questions