

# Welcome to Howe Pre-k Curriculum Night

Learn how to use the apps that will  
support your child's learning at  
home.

# Tonight's Agenda

- Introductions
- Attendants
- Our goals for tonight's event
- Teaching Strategies
- ReadyRosie
- Questions

WHOA!

"At the end of the day, the most overwhelming key to a child's success is the positive involvement of parents."

Jane D. Hull

# The Family App



- Personal messaging with the teacher.
- Important announcements for the classroom.
- Resources and tools to support learning at home.
- Send home observations to the teacher to support your child's growth.
- Receive report cards, documentation, and conference forms.

How to Guide

# Teaching Strategies

## Resources and Activities

You have access to an the entire digital library full of high quality books we are reading at school. You can also receive ideas for activities to try at home.

## Family App

An app available on your smartphone or tablet that gives you access to the Teaching Strategies information.

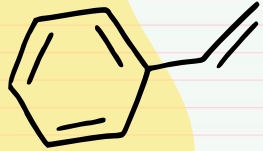
## Progressions and Report Cards

"Grades" and report cards look different in pre-k. We follow child development through formative assessment portfolios.

## Support and Communication

Utilize the chat feature and the technology available through the app to support your child's learning at home.





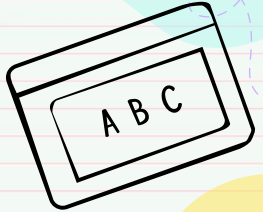
# Ready Rosie



- ❑ ReadyRosie is an early education tool that helps families, schools, and communities deepen and scale their family engagement efforts.
- ❑ Ready Rosie uses the power of video modeling and mobile technology to build powerful partnerships between families and educators, resulting in *Ready Families, Ready Educators, and Ready Children*



Parent Video



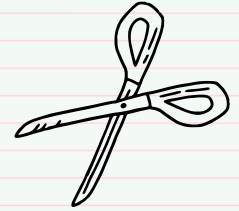


## Overview

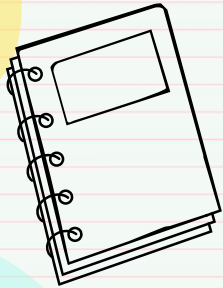
- ❑ Hear what we are doing in the classroom
- ❑ Discover activities and games you can play that relate to classroom learning
- ❑ Have more fun than ever with your child through meaningful interactions
- ❑ Provides modeled videos that you and your child can watch together and then play the game



# How To get started



- You will soon or already have received an invitation by text or email
- Accept the invitation and complete the process
- You will begin receiving messages and videos from Ready Rosie



Start Having Fun





## Family. Fun. Learning.

Hi!

Aydin's teacher at Mary Washington Howe Pre-K Center has invited you to join ReadyRosie! This is a great opportunity to reinforce concepts your child is learning in the classroom.

Mary Washington Howe Pre-K Center is providing access to families. Sign up now to receive activities to support your child's learning each week.

[Get Started Now](#)

Already have an account? [Sign In](#)



Delete



Move to



Forward



Reply



More

mail.yahoo.com



## Familia. Diversión. Aprendizaje.

¡Hola!

La maestra o maestro de Aydin en Mary Washington Howe Pre-K Center lo ha invitado a unirse a ReadyRosie. Esta es una gran oportunidad para reforzar los conceptos que su hijo(a) está aprendiendo en clase.

Mary Washington Howe Pre-K Center está proporcionando acceso a las familias. Regístrese ahora para recibir actividades para apoyar el aprendizaje de su hijo(a) casa semana.

[Comience ahora](#)

¿Ya tienes una cuenta? [Regístrate](#)



## ReadyRosie

update subscription preferences

ReadyRosie • 207 W Hickory St #101 • Denton, Texas 76201 • USA



Delete



Move to



Forward



Reply

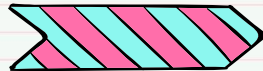


More



ENGLISH

ESPAÑOL



Student Name:  
Aydin Delaine

1

PERSONAL DETAILS

2

ACCOUNT SETUP

**Your First Name**

Enter your first name.

**Your Last Name**

Enter your last name.

NEXT

Already have an account? [Sign in.](#)



How would you like to receive ReadyRosie notifications?

Text Message  Email

### Your Mobile Phone Number

(910) 620-5129

We will send links to curated playlists and other informational alerts. Message and data rates may apply. Message frequency varies based upon user and program usage. Text HELP to 25749 for help. Text STOP to 25749 to cancel. [Terms](#) and [Privacy Policy](#)

### Your Email Address

clb4432@yahoo.com

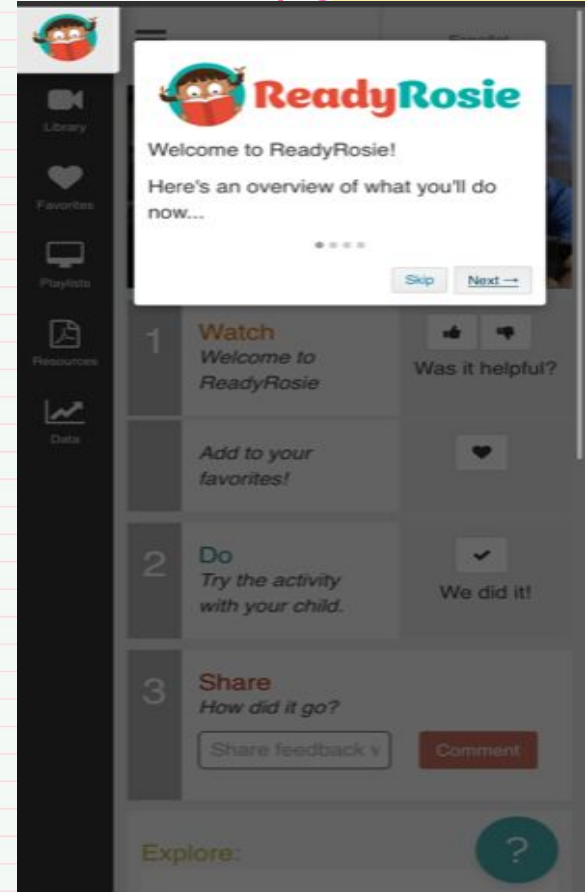
### Create a Password

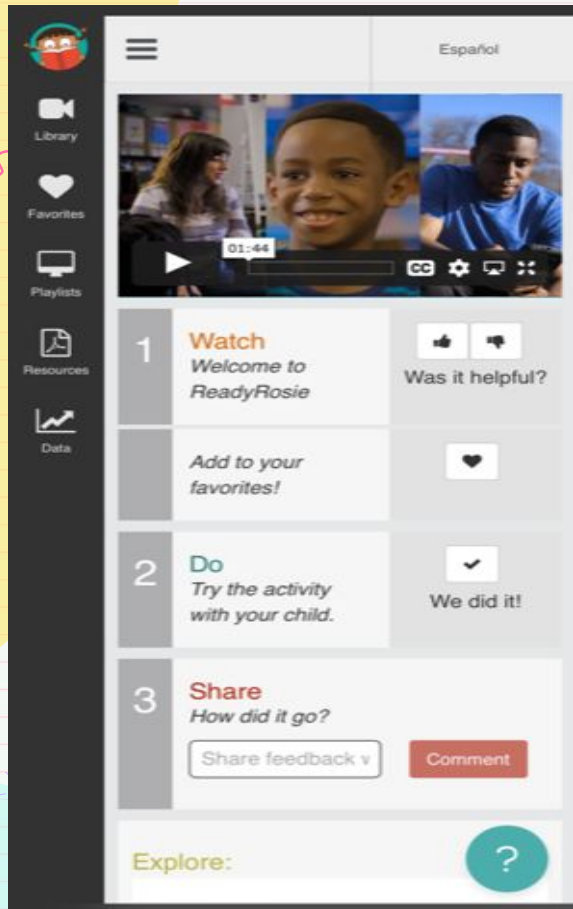
Enter a password here.

- ✘ Must be at least 8 characters
- ✘ Must contain at least three of the following:
  - ✘ At least one uppercase character
  - ✘ At least one lowercase character
  - ✘ At least one number
  - ✘ At least one special character

PREVIOUS

REGISTER





Welcome

## Explore:

Welcome! Now that you're connected, your child's teacher will be able to share playlists with Modeled Moment videos for you and other caregivers in your child's classroom. These videos model ways that you can support your child's growth and development related to what he or she is learning in school. Make sure to respond to each of the three steps after watching. You have unique insights about your child that the teacher needs to hear!

### Why It's Important

This is where you'll see a short description of how this activity connects to classroom learning concepts.

### Not Ready Yet

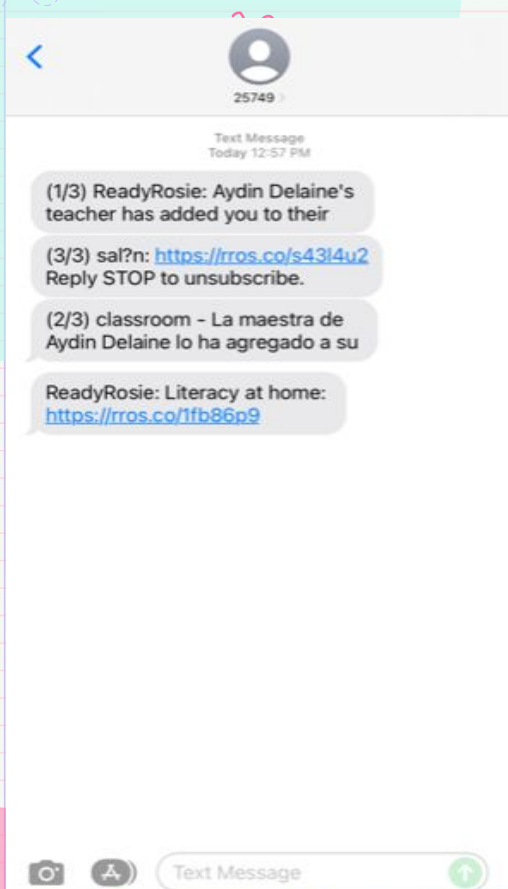
If your child isn't quite ready for the activity, here you'll find a suggestion for making it a little easier.

### Need a Challenge

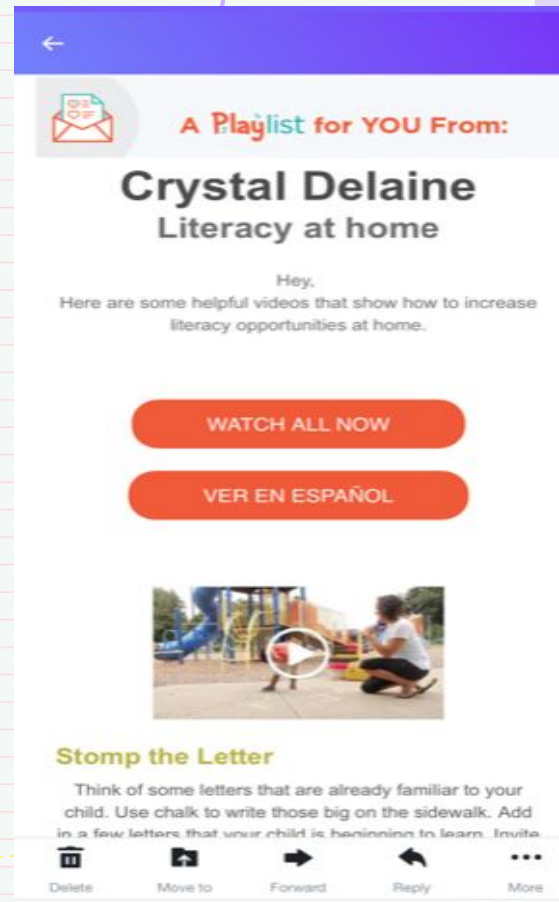
If the activity seems too simple for your child, here you'll find a suggestion for making it a little more challenging.

> Explore More





You will begin receiving Emails and Text messages containing videos and other resources



# Thanks!



Do you have any questions?

Mary Washington Howe PreK

1020 Meares St.

910-251-6195



CREDITS: This presentation template was created by **Slidesgo**, including icons by **Flaticon**, and infographics & images by **Freepik**.

Please keep this slide for attribution

Curriculum Night-Attendance Form