

READ for the HOUSE



Ronald McDonald
House Charities®
Philadelphia Region

Read for the House is your chance to turn reading into a superpower! Every minute you spend reading helps families who are staying at the Ronald McDonald House while their children are in the hospital. The more you read, the more you help. **And, you can win fun prizes!**

HERE'S HOW IT WORKS:

JANUARY

In January, you'll learn more about the Ronald McDonald House, set up a web page, and ask family and friends to pledge any amount of money for each minute you read during February.

FEBRUARY

Read as much as you can throughout the month of February, and make sure to keep track of every minute you read on the calendar that we give you. Every single minute counts!

MARCH

In March, you will reach out to your friends and family who are supporting your reading efforts and collect their donations. You can feel good knowing every dollar will help families in need!

SETTING UP YOUR WEB PAGE:

1. Visit RonaldMcDonaldHousePhilly.org/Read, and click on "Register Now."
2. Review the agreement.
3. Select "Reader." Find your school's team by clicking on the "Search" button below "Find a Team to Join." If you are participating on your own, search for the Ronald McDonald House readers and join our team.
4. Pick a fundraising goal that you think you can reach. You can change your fundraising goal at any time.
5. Complete the form to create a username and password for your fundraising account. If you created an account last year, you can log in using the same username and password, but will need to create a new fundraising page for this year. If you need help resetting your password, contact Alyssa McHugh.
6. Customize the fundraising page with photos, a story, and anything else you would like to share.
7. Now you are ready to spread the word that you are reading and raising money for the House!

Families are asked to pay \$25 a night—but your reading helps cover that cost!

PRIZES!

When you reach a fundraising level, you'll receive the prize at that level, and all of the prizes in lower levels!

Your donations must be received by **March 13, 2026** to be considered for prizes.

RAISE \$25



Get a certificate, pencil, and reading star ribbon bookmark.



RAISE \$100

Get 2 coupons for Rita's Water Ice & **K-Grade 3:** 2 tickets to Sesame Place **Grade 4-6:** 2 tickets to Crayola Experience



RAISE \$250*

Get 2 tickets to a Premier League Lacrosse Game. A list of date options will be provided with your redemption voucher.



RAISE \$500

Get 2 tickets to the Phillies game on Saturday, April 18 vs. Atlanta Braves AND 2 tickets to either a UPenn football or basketball game* in 2026 season.



*Black out dates apply and no sport requests can be made.

RAISE \$1000

Get an autographed photo card* of former Phillies player Freddy Galvis or Cody Asche, and 2 tickets for a behind-the-scenes ballpark tour of Citizens Bank Park on Saturday, April 18.**

*Player requests cannot be made.
**Date subject to change.



OVERALL HIGHEST FUNDRAISER

The student who raises the MOST money throughout the entire program will receive 2 tickets with a parking pass to a 2026-2027 Philadelphia Flyers game and an autographed Matvei Michkov (#39) hockey puck.



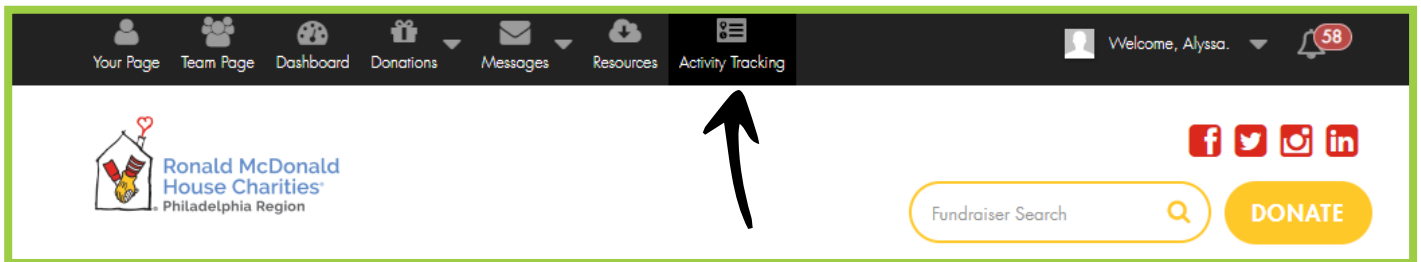
All students who raise \$250+ will be entered into a raffle for 4 tickets to a St. Joseph's men's basketball game in the 2025-2026 season!

READ for the HOUSE

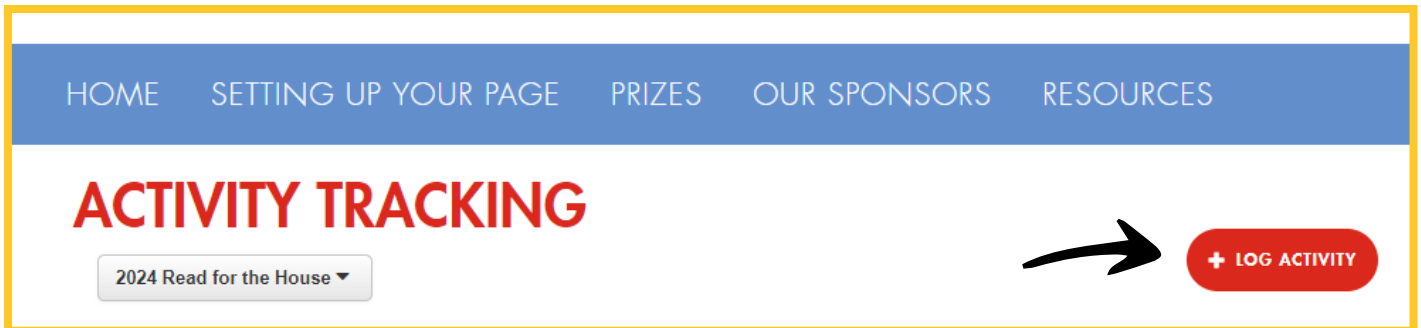


TRACKING YOUR READING MINUTES ONLINE

1. Open your fundraising page and click **“Activity Tracking”** located in the black dashboard at the top of the screen. This will open the Activity Tracker.



2. Click the red **“LOG ACTIVITY”** button.



3. Input the number of minutes you read, the date, and a description, then click **“SAVE.”** You can do this process every day, every week, or at the end of the month with your grand total.

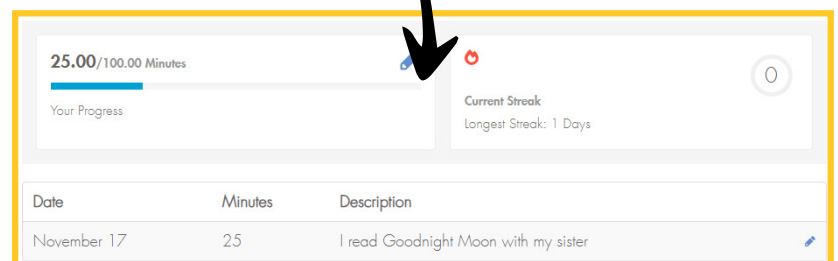
LOG ACTIVITY

Minutes Completed*

Activity Date*

Activity Description

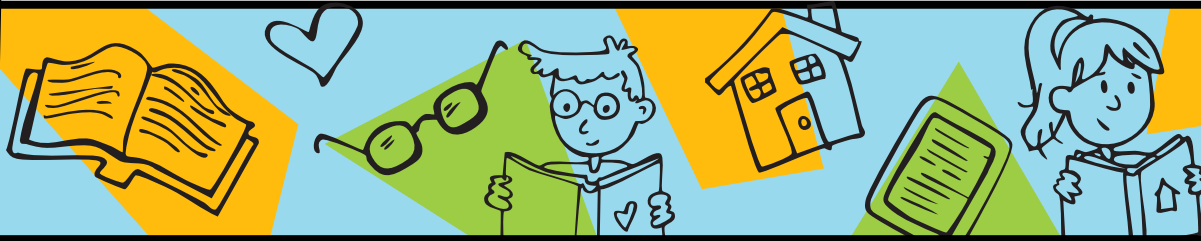
**YOU CAN NOW VIEW YOUR READING
PROGRESS WHEN LOGGED INTO YOUR
FUNDRAISING PAGE!**



NEED SOME HELP?

Contact Alyssa at alysa@rmhcp Philly.org.

READ for the HOUSE



FEBRUARY 2026

	SUN	MON	TUES	WED	THURS	FRI	SAT
Week 1: Ronald McDonald House Week	1 Why is the Ronald McDonald House important?	2 What would you put in a comfort bag for families?	3 Did you know the first House started in 1974 in Philadelphia?	4 What do you like most about reading?	5 There are over 385 Ronald McDonald Houses around the world!	6 Dress in red today in honor of the Ronald McDonald House!	7 Over 140 families stay at Houses in Philly every single night!
	TOTAL MINUTES READ <input type="text"/>	TOTAL MINUTES READ <input type="text"/>	TOTAL MINUTES READ <input type="text"/>	TOTAL MINUTES READ <input type="text"/>	TOTAL MINUTES READ <input type="text"/>	DRESS UP DAY! TOTAL MINUTES READ <input type="text"/>	TOTAL MINUTES READ <input type="text"/>
Week 2: Book Character Week	8 Who is your favorite book hero?	9 Which character in your book would you like to be friends with?	10 Books can take you anywhere—what's your dream destination?	11 Do you have a favorite villain character?	12 Do you like adventure, mystery, or funny books?	13 Dress like your favorite book character today!	14 If you could live in any story, which one would it be?
	TOTAL MINUTES READ <input type="text"/>	TOTAL MINUTES READ <input type="text"/>	TOTAL MINUTES READ <input type="text"/>	TOTAL MINUTES READ <input type="text"/>	TOTAL MINUTES READ <input type="text"/>	DRESS UP DAY! TOTAL MINUTES READ <input type="text"/>	TOTAL MINUTES READ <input type="text"/>
Week 3: Bedtime Story Week	15 What's your favorite thing to do before bed?	16 Did you know owls and bats sleep in the daytime?	17 What time of day do you like to read the most?	18 How many chapters did you read today?	19 Do you have a stuffed animal that sleeps next to you at night?	20 Dress in your favorite pajamas today!	21 Do you remember your dreams? Draw one of them!
	TOTAL MINUTES READ <input type="text"/>	TOTAL MINUTES READ <input type="text"/>	TOTAL MINUTES READ <input type="text"/>	TOTAL MINUTES READ <input type="text"/>	TOTAL MINUTES READ <input type="text"/>	DRESS UP DAY! TOTAL MINUTES READ <input type="text"/>	TOTAL MINUTES READ <input type="text"/>
Week 4: Career Week	22 What job would you like to try one day?	23 What skills would you need for your dream job?	24 What book character has a job that you find interesting?	25 If you could have any job throughout history, what would it be?	26 What grade would you give the book you are reading?	27 Dress like the job you want when you grow up!	28 It's your last day! See if you can read 5 extra minutes.
	TOTAL MINUTES READ <input type="text"/>	TOTAL MINUTES READ <input type="text"/>	TOTAL MINUTES READ <input type="text"/>	TOTAL MINUTES READ <input type="text"/>	TOTAL MINUTES READ <input type="text"/>	DRESS UP DAY! TOTAL MINUTES READ <input type="text"/>	TOTAL MINUTES READ <input type="text"/>



**MY READING
GRAND TOTAL:**

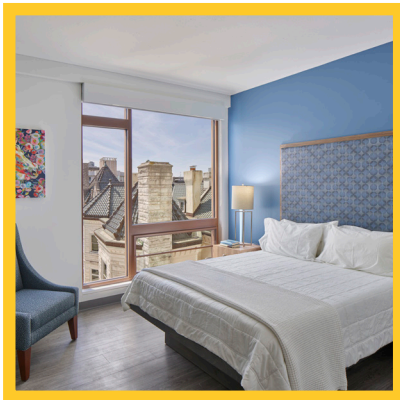


ABOUT THE RONALD McDONALD HOUSE

OUR MISSION:

Ronald McDonald House Philadelphia supports families on their children's medical journeys with a community of comfort and hope.

OUR PROGRAMS:



2 Houses

Our Ronald McDonald Houses provide temporary lodging, transportation, meals, and social services to families who travel to Philadelphia for pediatric care.



3 Family Rooms

Our three Ronald McDonald Family Rooms extend the support of our Houses into the hospital setting and offer a quiet respite space for families at Children's Hospital of Philadelphia and St. Christopher's Hospital for Children.



1 Camp

Ronald McDonald Camp is a week-long overnight camp for children with cancer and their siblings held in the Pocono Mountains every August.



1 Care Mobile

The Ronald McDonald Care Mobile, operated in partnership with St. Christopher's Foundation for Children, provides comprehensive and continuous oral healthcare to children in North Philadelphia.

Stay Connected!



@RMHCphilly | RonaldMcDonaldHousePhilly.org

MORE WAYS TO HELP

Every minute you spent reading this February makes a big difference for the families who rely on Ronald McDonald House Philadelphia. Thank you for all of your help! If you or someone you know would like to do more for the families we serve, here are a few easy ways to stay involved.



Host a Snack Drive

Ask friends, teammates, and classmates to collect individually-wrapped snacks to keep our guest families energized during long days at the hospital.

Contact Linda Pusatere: lpusatere@rmhcphilly.org
www.RMHCphilly.org/HighestNeeds



Shop Our Wish List

Help us provide everything that our guest families need during their stay with us, so they can focus on what matters most—their children's health.

Contact Linda Pusatere: lpusatere@rmhcphilly.org
www.RMHCphilly.org/WishList



Recycle for the House

We can recycle and redeem your tabs for money to support our guest families! Collect as many as you can and deliver them to the House.

Contact: tabs@rmhcphilly.org
www.RMHCphilly.org/Recycle



Create Your Own Fundraiser

Get creative in your community! Host a lemonade or hot chocolate stand, team up with friends to host a car wash—have some fun and make a big difference for families in need.

For ideas and materials to get you started, contact Alyssa McHugh: alyssa@rmhcphilly.org

ATTENTION PARENTS!

- Payments should be made online. Visit RonaldMcDonaldHousePhilly.org/Read to make a donation by debit/credit card.
- Donations are tax deductible as allowed by law.
- If donating by check is necessary, checks should be made payable to Ronald McDonald House Charities of the Philadelphia Region. Please mail it to the address below and include the student name, school name, and Read for the House along with the check so your child gets proper credit for the donation. Email alyssa@rmhcphilly.org to notify her a check should be expected.

**Attention: Alyssa McHugh/Read for the House
RMHC Philly
3925 Chestnut Street
Philadelphia, PA 19104**



MAKE A BIGGER IMPACT!

You can help make an even bigger impact for our guest families by checking if your employer will match your personal donations toward your child's reading efforts.

If you would like your match to count toward your child's fundraising total, be sure to email Alyssa (alyssa@rmhcphilly.org) to let us know. We won't receive the matched funds until after the program has concluded, but we want your child's fundraising total to reflect the matched amount. You can encourage each of your child's supporters to check if their employer will match their donation, too!