

2024 PUBLIC REPORT



Child & Family Services

Physical Address

1325 H Street
Modesto, CA 95354
Phone: (209) 238-6300
Fax: (209) 238-4217

Mailing Address

1100 H Street
Modesto, CA 95354

Table of Contents

	Page
Message From the Superintendent & Executive Director	1
CFS Mission, Vision, and Core Strategy	2
Oversight & Monitoring	3
Funding, Expenditures, & Budget	4
Communities & Eligible Children Served	5
Educating Children	6
Planning for School Readiness	7
School Readiness Goals	8
Healthy Children are Ready For School	9
Classroom Assessment Scoring System (CLASS)	10
Kindergarten Student Entrance Profile (KSEP)	11
Supporting Parents	12
Head Start Parent, Family, & Community Engagement Framework	13
CFS Community Program Highlights	14
Developing Professionals	16
Programs	17
Program Descriptions	18-20

Message From the Superintendent & Executive Director

The Stanislaus County Office of Education (SCOE) is committed to ensuring every child in the county receives a high-quality education. Recognizing that the foundation for a lifetime of learning starts well before kindergarten, SCOE's outstanding early childhood care and education and family support programs provide children with safe and caring environments in which to develop the language, literacy, problem-solving, and social emotional skills they will need to succeed in the classroom and community. In addition, our programs help the youngest learners develop healthy habits and positive attitudes about school while engaged in a setting that supports their family, home language, and culture.

The research is clear: every dollar devoted to high-quality early childhood care and education yields a tremendous return on investment with savings in special and remedial education, the criminal justice system, and public assistance. As a result, SCOE established the Child & Family Services (CFS) Division with the mission of meeting the needs of our youngest, most at-risk, and vulnerable community members, not just in Stanislaus, but also in the seven other counties where we provide services. We recognize that the road to a high school diploma in every hand and beyond is rooted in a high-quality early education experience in the first five years of a child's life, and we appreciate our families' partnership in this endeavor.

School Readiness depends greatly on children having access to engaging and meaningful experiences at home and to rich, stimulating environments at school. Other factors essential to success include instructional staff who, in partnership with families, are responsive to children's interests, individual needs, and their diverse cultural and linguistic backgrounds. CFS dedicated itself to implementing just such programs this past year, providing high-quality services to approximately 11,600 children and 8,700 families.

Moving forward, we remain dedicated to health and safety, resilient relationships, and programming that is rooted in effectiveness, efficiency, empowerment, and engagement. This will all be accomplished by modeling positivity, support, and unity with our Parent Policy Councils, customers and communities, between our recipient and subrecipient partner staff, and amongst one another, that is, all 1,200 professionals affiliated with our programs.

As Scott Kuykendall completes his seventh year as your Stanislaus County Superintendent of Schools, serving as Governing Board Chairperson for Stanislaus Head Start and Central California Migrant Head Start, and as Tony Jordan completes his tenth year as the Executive Director of the Child & Family Services division, we are proud of the work being done to educate children, support parents, develop professionals, and positively impact lives and communities. We look forward to the year ahead, and, as we bring 2025 to a close, we applaud our outstanding outcomes and the SCOE/CFS staff, as well as those at our delegate and partner agencies, who work tirelessly for the children and families we serve.

We look forward to the year ahead!



Scott Kuykendall

Stanislaus County Superintendent of Schools

Stanislaus County Office of Education



Tony Jordan M.Ed.

Executive Director

Child & Family Services Division
Stanislaus County Office of Education
Central California Migrant Head Start

Our Work is Driven by Our Mission

Child & Family Services' work is vital and distinct, as it focuses on the period of life during which the foundation for all future success is built – ages 0 to 5. It's the time when the brain grows the fastest and when support and early intervention makes the greatest difference in the prospects of children and families.

Mission

CFS creates opportunities, impacts lives & unites communities by educating children, supporting parents, & developing professionals.

Vision

CFS is seen as a leader, partner, and innovative service provider of equitable early childhood education.

CFS gives youth a Head Start in school, work, and life by educating children, supporting parents, and developing the professionals who work with them. As a result, the division makes a substantial impact on individual lives and those of the communities it serves while ensuring its programs are diverse, equitable, and inclusive. CFS takes pride in providing high-quality services that incorporate best practices and yield optimal outcomes.

Core Strategy

Educating Children

CFS staff and partners provide holistic, comprehensive, high-quality experiences for young children in centers and homes. Beyond cognitive development, early educators help children develop the social-emotional skills that are vital to success, not just in the classroom but the community, including:

- Seeking help when appropriate
- Playing well with others and sharing
- Focusing attention
- Staying on task, even after experiencing difficulties and challenges
- Being excited and interested in a variety of school activities

Supporting Parents

CFS believes that parents are their child's first and most important teacher and division administrators and staff support them in that role. CFS also helps develop strong families by providing social service referrals. Whether you are a biological parent, foster parent, guardian or grandparent, strong families can:

- Manage stress when faced with challenges
- Have positive and supportive relationships
- Have or access resources in times of need to minimize stress
- Understand the abilities of their young children
- Help their children grow in their ability to communicate clearly, regulate emotions and establish and maintain relationships

Developing Professionals

A high-quality early education experience for children and families begins with the staff who work with them. CFS and its partners make investments in the early education workforce, so its members have the education and training needed to help children play, learn, and grow and to enable parents and families to thrive. This results in highly skilled and trained professionals, including:

- Child development educators and caregivers
- Family service and support staff
- Child development experts and coaches
- Disabilities experts
- Health and nutrition professionals
- Administrative, grant management, support, and fiscal staff

Oversight & Monitoring



As required by their funding agencies, federal Head Start programs are subject to rigorous monitoring reviews by the Office of Head Start. Programs funded by the California Departments of Education and Social Services also receive periodic evaluations.

The Early Head Start, Head Start and Child Care Partnership programs received a federal Focus Area 1 Monitoring Review during the 2024–2025 program year, with one area of concern identified. Migrant and Seasonal Head Start and Migrant Early Head Start received a federal Focus Area 1 Monitoring Review in 2025–2026, with no findings or areas of concern identified. Indeed, the several strengths and highlights cited in the reports reflect the programs' overall quality. Due to those successful reviews, all Head Start programs in 2026–2027 will enter Year 3 of a five-year grant period with non-competitive grant applications.

State-funded CCTR, CAPP, CMIG and R&R programs, in May 2025, received a Contract Monitoring Review from the California Department of Social Services. The review resulted in one finding and a 5% error rate for direct service contracts and no findings and 0% error rate for CAPP program, the next review is scheduled for program year 2027. Following the state's reassignment of program and funding oversight ("the lift and shift"), the California Department of Education now monitors the CSPP programs through the Early Education Division with the last virtual Compliance Monitoring Review conducted in May 2021 resulting in no findings and a 0% error rate. The programs' site licenses are monitored through the Community Care and Licensing Division. There were no type A violations identified in these programs in 2024–2025.

SCOE, CFS' parent organization, had no findings in its most recent (2023–2024) financial audit report dated June 2024.

Funding

Total amount & percent of public & private funds received by Child & Family Services in the 2024–2025 year

How much is public?	\$148,327,135	99.92%
How much is private?	\$125,000	0.08%

State

Local	\$3,061,546	2%
State Non-Center-Based	\$54,987,672	37%
State Center-Based	\$20,050,051	14%

Federal

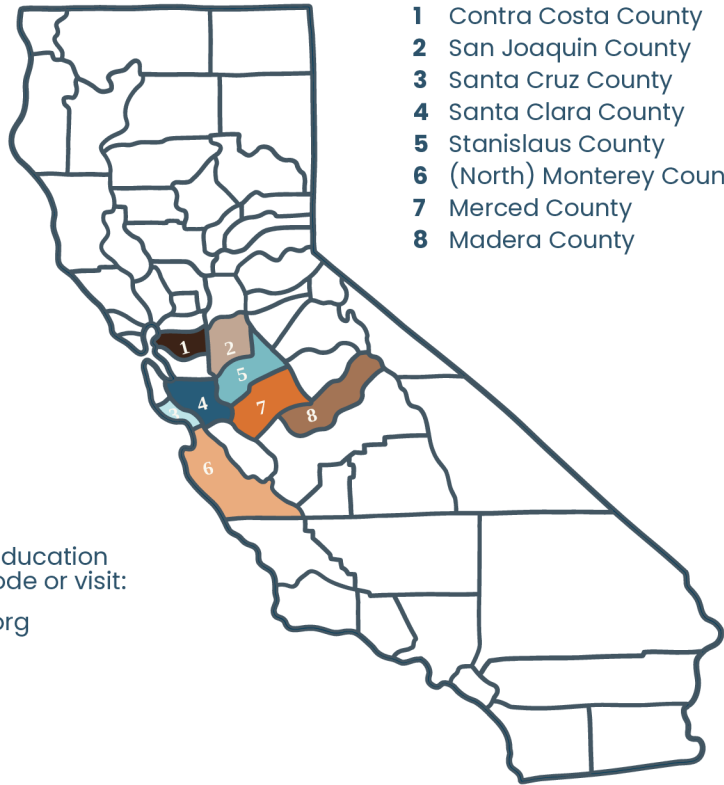
Early Head Start	\$7,881,607	5%
Early Head Start Child Care Partnership	\$3,363,558	2%
Head Start	\$19,911,354	14%
Migrant/Seasonal & Migrant Early Head Start	\$39,196,347	26%

Expenditures & Budget

	2024–2025 Actual Expenditures		2025–2026 Proposed Budget	
Salaries, Fringe & Benefits (including sub contractors)	\$69,218,911.79	47%	\$70,835,248	50%
Payments to private child care facilities	\$43,940,536.23	30%	\$39,265,659	28%
Other operating costs (service contracts, travel, indirect, training, printing, maintenance, etc.)	\$29,963,156.67	20%	\$28,200,632	20%
Equipment & Supplies	\$4,378,466.03	3%	\$3,675,587	2%

Communities Served

While predominantly serving Stanislaus County children and families, CFS through its subrecipients, subcontractors and partners, also provides early education programs in seven other California counties – Contra Costa, Madera, Merced, Monterey, San Joaquin, Santa Clara, and Santa Cruz. Programs serving children whose parents work in agriculture are provided by partners in all counties, including Stanislaus.



- 1 Contra Costa County
- 2 San Joaquin County
- 3 Santa Cruz County
- 4 Santa Clara County
- 5 Stanislaus County
- 6 (North) Monterey County
- 7 Merced County
- 8 Madera County

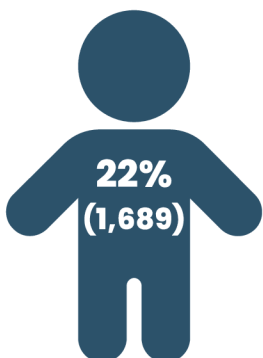


To find and enroll in an early education program near you, scan QR code or visit:
www.findchildcarestanislaus.org

% of Eligible Children Served

Early & Regional Head Start

Serving Ages 0-5 Years in Stanislaus County



Eligible
7,515

Early Head Start Child Care Partnership

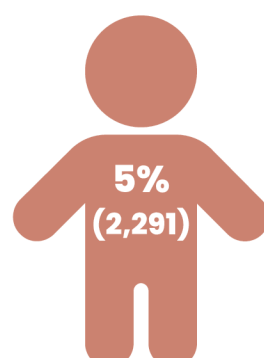
Serving Ages 0-3 Years in Stanislaus & San Joaquin Counties



Eligible
8,694

Migrant/Seasonal & Migrant Early Head Start

Serving Ages 0-5 Years in 8 County Region

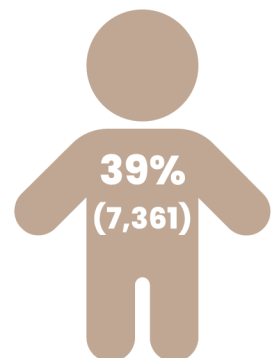


Eligible
50,079

State Child Development Programs

Serving Ages 0-12 Years in Stanislaus, Madera & Merced Counties

**Excludes children who are also eligible for Head Start*



Eligible
*18,771

Educating Children

of Head Start Children & Pregnant Women Funded

- 1,112** Head Start
- 320** Early Head Start (includes pregnant women)
- 153** Early Head Start – Child Care Partnership
- 2,285** Migrant & Seasonal Head Start & Migrant Early Head Start (includes pregnant women)



TOTAL
for **ALL** funded head start programs

of Head Start Children & Pregnant Women Served

- 1,265** Head Start
- 458** Early Head Start (includes pregnant women)
- 232** Early Head Start – Child Care Partnership
- 2,310** Migrant & Seasonal Head Start & Migrant Early Head Start (includes pregnant women)



TOTAL
for **ALL** head start programs served

of Children Served In State Programs

- 324** General Child Care
- 863** California State Preschool Program
- 5,470** California Alternative Payment Program
- 622** Migrant Child Care PY & FY
- 82** Cal-Works Early Education Program



TOTAL
for **ALL** state programs served

Planning for School Readiness

Head Start is a child and family focused program that strengthens school readiness and social competence in young children. The Head Start School Readiness Plan supports the development of foundational skills for infants, toddlers, and preschool-age children that are essential to their success in the classroom.



Development of the Head Start School Readiness Plan for Infants, Toddlers, and Preschoolers

Child Screening & Assessments Administered

- California Desired Results Developmental Profile
- Ages & Stages Questionnaire including Social/Emotional
- Kindergarten Student Entrance Profile (KSEP) administered to kindergarten-eligible children

Analysis of Child & Family Assessments & Program Information Report

- Individual and group lesson plans developed and adjusted with each assessment period
- Program-level School Readiness Goals developed in five central domains:
 1. Approaches to Learning
 2. Social and Emotional Development
 3. Language and Literacy
 4. Cognition
 5. Perceptual, Motor and Physical Development

Develop School Readiness Plan

- School readiness goals & objectives
- Professional development for staff
- Family engagement activities

Implement Creative Curriculum to Fidelity

- Research-based curriculum to support learning
- Aligned to California Learning Foundations and Frameworks
- Aligned to Head Start Early Learning Outcomes Framework
- Aligned to California State and Common Core standards for Kindergarten

School Readiness Goals

The SCOE School Readiness Plan is designed to guide efforts leading to positive child outcomes for optimized development.

School readiness efforts are supported through ongoing communications and professional development to strengthen staff and parents' understanding of the School Readiness Plan, as well as their important role in implementing it. Parents and Head Start staff work in partnership to ensure that infants, toddlers, and preschool-aged children achieve appropriate school-readiness outcomes. SCOE identifies and implements strategic professional development and makes program adjustments to continually improve school readiness outcomes by analyzing program data and delivering responsive, comprehensive, and research-based curriculum.

Recipient-operated, delegate, and partner agencies incorporate the Grantee School Readiness Goals and Objectives into their programs. This ensures the implementation of identified teaching and family practices, as well as broad participation in professional development activities that support school readiness. Recipient-operated, delegate, and partner agencies also develop policies and procedures to support school readiness efforts and expectations.

Goals for Each Domain

- 1 Approaches to Learning**
Children will demonstrate improved positive approaches toward learning
- 2 Social & Emotional Development**
Children will demonstrate improved social behavior, emotion regulation, and emotional well-being
- 3 Language & Literacy**
Children will demonstrate improved communication, language, and emergent literacy skills
- 4 Cognition**
Children will demonstrate improved general cognitive skills
- 5 Perceptual, Motor & Physical Development**
Children will demonstrate improved perceptual, motor, and physical skills



Healthy Children are Ready For School

HEALTH OF CHILDREN

	Cumulative Enrollment of Children (ages 0-5)*	Children Who Received Required Dental Exams		Children Who Received Required Medical Exams		Children with Diagnosed Disabilities	
		(#)	(%)	(#)	(%)	(#)	(%)
Head Start	1,265	1,163	92%	1,215	96%	216	17%
Early Head Start	424	361	85%	405	96%	88	21%
Early Head Start Child Care Partnership	232	169	73%	224	97%	34	15%
Migrant/Seasonal & Migrant Early Head Start	2,291	2,093	91%	2,198	96%	294	13%
TOTAL	4,212	3,786	90%	4,042	96%	632	15%

*Cumulative enrollment excludes pregnant women

Classroom Assessment Scoring System (CLASS)

CFS utilizes the Classroom Assessment Scoring System (CLASS) to support effective teaching practices including high-quality professional development. A certified CLASS Observer typically observes preschool teachers for four cycles of 20 minutes, noting the quality of teacher-child interaction before rating teachers on a seven-point scale in three domains.

Classroom Assessment Scoring System (CLASS) is a widely used tool for observing and assessing teacher-child interactions in early childhood and preschool settings. It focuses on measuring the quality of interactions that support children's learning and development. The tool is designed to assess teacher effectiveness and promote professional development within specific areas.

CFS has certified CLASS Observers who evaluate teachers in three broad domains, which are further divided into specific dimensions.

1 Emotional Support

Considers what teachers do to help children develop warm, supportive relationships, feel comfortable, and experience levels of independence.

Dimensions: Positive Climate, Negative Climate, Teacher Sensitivity, Regard for Student Perspectives

2 Classroom Organization

Considers how teachers manage children's time, attention, and behavior to maximize learning opportunities. Looks at interactions that help children develop skills to regulate their own behavior.

Dimensions: Behavior Management, Productivity, Instructional Learning Formats

3 Instructional Support

Refers to specific behaviors that support children's cognitive development and language growth

Dimensions: Concept Development, Quality of Feedback, Language Modeling

CFS CLASS scores are above the Competitive Thresholds set by the Office of Head Start

	Emotional Support	Classroom Organization	Instructional Support
Competitive Thresholds	5.00	5.00	2.30

2024-2025 Preschool Teacher CLASS Scores:

	Emotional Support	Classroom Organization	Instructional Support
Head Start	6.21	5.61	3.68
Migrant/Seasonal Head Start	6.56	6.09	3.58

Kindergarten Student Entrance Profile (KSEP)

As part of the Cradle to Career Partnership's StanREADY Action Team (a community collaborative impact project), CFS and its delegate and partner agencies utilize the Kindergarten Student Entrance Profile (KSEP) to assess four-year-old Head Start children's school readiness skills. KSEP is an evidence-based observation tool that scores skill levels through the terms "Not Yet," "Emerging," "Almost Mastered," and "Mastered" across the following measures:

Social-Emotional Items:

1. Seeks adult help when appropriate
2. Engages in cooperative play activities with peers
3. Exhibits impulse control and self-regulation
4. Maintains attention to tasks
5. Is enthusiastic and curious about school
6. Persists with tasks after experiencing difficulty

School-Ready Knowledge Items:

7. Recognizes own written name
8. Demonstrates expressive verbal abilities
9. Understands that numbers represent quantity
10. Writes own name
11. Recognizes colors
12. Recognizes shapes
13. Names upper case alphabet letters

2024–2025 Stanislaus County Regional & Migrant Head Start Children:

86% *Scored
"Almost Mastered"
or higher*



Supporting Parents

Family engagement is the foundation for success in Head Start and state-funded childcare and child development programs. Parents are a child’s first and most important teacher, and they play a crucial role in preparing children for school and a lifetime of academic success. Head Start and state-funded programs are valuable partners in this endeavor, as family services staff, teachers, home visitors, providers and families work together to develop a collaborative partnership to advance and promote long-term success for children and families.

In Head Start programs, family engagement activities are grounded in positive, ongoing, and goal-oriented relationships. Through these relationships, staff partner with families to set individualized family and child goals and connect families to community resources that help to support their stability and growth. Families engage in conversations around their child’s progress, family strengths, areas of support and offer opportunities to referrals that address housing, employment, health, mental health and educational needs. This relationship-based approach empowers parents to advocate for themselves and their families.

Families are offered opportunities to participate in research-based parent education activities and monthly meetings designed to enhance their understanding of early childhood development. These sessions include topics such as child development milestones, positive guidance, health and safety, and school readiness. Through their participation, parents forge connections with other families and gain a deeper knowledge of available community resources. Staff support families and foster leadership skills by encouraging parents’ participation in parent committees. Through this shared governance model, parents serve as Head Start decision-makers, receiving specialized training in fiscal requirements, program design, human resources, health & safety, and child supervision. Additionally, state funded families are encouraged to provide feedback during their parent meetings.

The commitment to supporting families and their school to home connections ensures that every family feels valued, connected and supported in achieving goals for their children, their community and themselves.

of Families Served

1,213	Head Start
401	Early Head Start
196	Early Head Start – Child Care Partnership
1,856	Migrant & Seasonal Head Start & Migrant Early Head Start

3,666 TOTAL FOR ALL HEAD START PROGRAMS

5,051 TOTAL FOR ALL STATE PROGRAMS



8,717

TOTAL FAMILIES SERVED

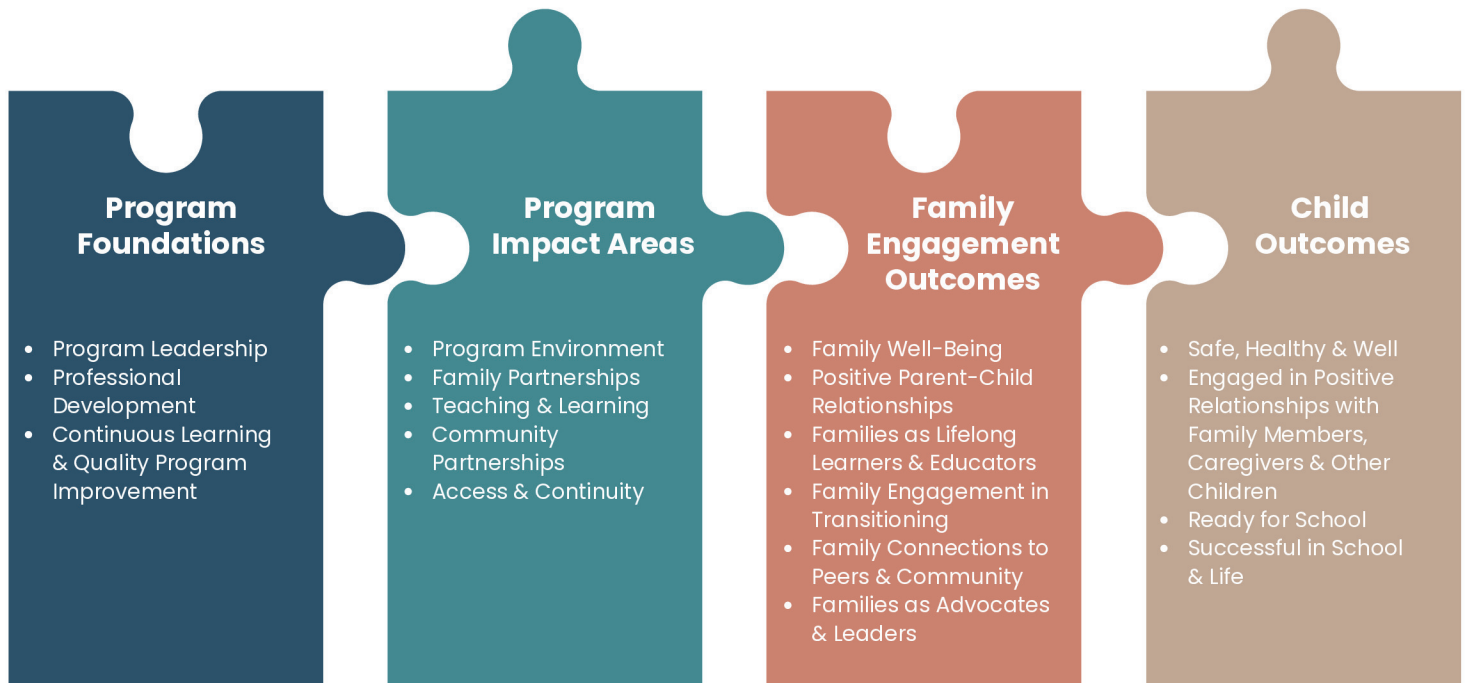
Community Engagement Framework



The Head Start Parent, Family, and Community Engagement Framework is utilized to support and engage families in their children’s ongoing learning and development.

When parents and family engagement activities are systematic and integrated across program foundations and program impact areas, high-quality and effective outcomes for families are achieved. The result is children who are healthy and ready for school.

“This program has been the support I needed to finish my degree and work full time.”



Positive & Goal Oriented Relationships, Cultural & Linguistics Responsiveness

TESTIMONIALS

“The program has greatly benefited us in being able to obtain and maintain employment. Without childcare, I wouldn't be able to work and provide a better standard of living for my daughters.”



“I am very thankful how safe and involved everyone on staff has been with not only the children but also the parents. Thank you very much.”



“The program has allowed me the ability to look for employment and my child has developed tremendously in emotions/communication skills.”



TESTIMONIALS



“This program is great and has made it possible for me to attend school /training for a job. Great support from teachers and all the office staff has been so helpful with paperwork and services available in the community.”



“This program has helped me keep my job and has let me support my children.”



“It really helped me be able to go back to work without worrying about my children. I feel like they are safe and learning. They love all their teachers.”

Developing Professionals

A highly trained and educated staff is essential to CFS fulfilling its mission of service to the community. To continue to develop staff skills, no matter the position, CFS funds a robust variety of professional development opportunities for early education professionals and support staff, including childcare center staff, family childcare home providers and Family, Friend, and Neighbor providers. Professional development is offered in Stanislaus County and across the seven other counties in which CFS programs operate.



- 1 Trainings / Workshops
- 2 Conferences
- 3 College Courses
- 4 Learning Opportunities
- 5 Networking

2024-2025
Program Year

1,200
of
Professionals

314
of Professional
Development
Opportunities

For more information or to register visit:
stancoe.org/cfs



Programs

Child & Family Services receives a variety of funding and works with a multitude of agencies to operate programs that educate children, support parents, and develop professionals.

Head Start

Central California Child Development Services Inc.	2250 Rockefeller Drive #1, Ceres	(209) 581-9000
Empire Union School District	116 N. McClure Road, Modesto	(209) 521-2800
Keyes Union School District	4801 Lucinda Avenue, Keyes	(209) 656-2388
Modesto City Schools	1017 Reno Street, Modesto	(209) 574-1625
Salida Union School District	4801 Sisk Road, Salida	(209) 543-3102
Stanislaus County Office of Education	1325 H Street, Modesto	(209) 238-6300
Turlock Unified School District	1574 E. Canal Drive, Turlock	(209) 667-0632
Waterford Unified School District	219 N. Reinway Avenue, Waterford	(209) 874-3301

Early Head Start

Central California Child Development Services Inc.	2250 Rockefeller Drive #1, Ceres	(209) 581-9000
Empire Union School District	116 N. McClure Road, Modesto	(209) 521-2800
Keyes Union School District	4801 Lucinda Avenue, Keyes	(209) 656-2388
Salida Union School District	4801 Sisk Road, Salida	(209) 543-3102
Stanislaus County Office of Education	1325 H Street, Modesto	(209) 238-6300
Waterford Unified School District	219 N. Reinway Avenue, Waterford	(209) 874-3301

Early Head Start Child Care Partnership

Family Resource Center	3127 Transworld Dr. Suite #100, Stockton	(209) 948-1553
Modesto City Schools	1017 Reno Street, Modesto	(209) 574-1625
Stanislaus County Office of Education	1325 H Street, Modesto	(209) 238-6300

Migrant & Seasonal Head Start

Central California Child Development Services Inc.	2250 Rockefeller Drive #1, Ceres	(209) 581-9000
Community Action Partnership of Madera County	1225 Gill Avenue, Madera	(559) 673-0012
El Concilio	445 N. San Joaquin Street, Stockton	(209) 644-2600
Pajaro Valley Unified School District	294 Green Valley Road, Watsonville	(831) 728-6955

Migrant Early Head Start

Central California Child Development Services Inc.	2250 Rockefeller Drive #1, Ceres	(209) 581-9000
----------------------------------------------------	----------------------------------	----------------

State Programs

Central California Child Development Services Inc.	2250 Rockefeller Drive #1, Ceres	(209) 581-9000
Community Action Partnership of Madera County	1225 Gill Avenue, Madera	(559) 673-0012
Keyes Union School District	4801 Lucinda Avenue, Keyes	(209) 656-2388
Stanislaus County Office of Education	1325 H Street, Modesto	(209) 238-6300

Central Office

Stanislaus County Office of Education	1325 H Street, Modesto	(209) 238-6300
Central California Migrant Head Start	1325 H Street, Modesto	(209) 238-6300

Program Descriptions

Educating Children & Supporting Parents

Program Name & Support

Program Description

<p>California Alternative Payment Program (CAPP) <i>Infants, Toddlers, Preschool & School-Age Children</i></p>	<p>Helps families arrange childcare and makes payments through vouchers paid directly to family-selected providers. Designed to increase parental choice and accommodate individual family needs. Reimbursements can be made for certified childcare services utilized with licensed family childcare homes, licensed childcare centers and Family, Friends and Neighbors (FFN).</p>
<p>California State Preschool Part Day & Full Day <i>Preschool Children</i></p>	<p>Provides developmentally appropriate programs designed to facilitate the transition to kindergarten for three- and four-year-old children in educational development, health services, social services, nutritional services, parent education, parent participation, evaluation, and staff development.</p>
<p>Children and Youth Behavioral Health Initiative: Trauma-Informed Programs & Practices <i>Preschool Children</i></p>	<p>Supported by a California Department of Health Care Services grant, CYBHI focuses on providing services that strengthen the mental health and well-being of children and youth. Through Round 2 funding, CFS provides expanded access to trauma-informed behavioral health services at Head Start, Early Head Start and Early Head Start-Child Care Partnership locations across its service area.</p>
<p>Children and Youth Behavioral Health Initiative: Early Childhood Wraparound Services <i>Parents, Caregivers, Early Childhood Education Teaching Staff</i></p>	<p>With Round 3 CYBHI support, CFS provides wraparound services that help adults working with infants and young children, as well as expectant and new parents and caregivers, build the skills they need to respond more effectively to children’s individual emotional and behavioral health needs.</p>
<p>Early Head Start <i>Pregnant Women, Infants, Toddlers, Families</i></p>	<p>Provides continuous, intensive, and comprehensive child development and support services to infants, toddlers, and their families through both childcare centers and home-based programs.</p>
<p>Early Head Start-Child Care Partnership <i>Infants, Toddlers, Families</i></p>	<p>Provides continuous, intensive, and comprehensive child development and support services to infants, toddlers, and their families through partner agencies in family childcare homes.</p>
<p>Emergency Child Care Bridge Program <i>Infants, Toddlers, Preschool, School Aged Children, Adults with Exceptional Needs</i></p>	<p>In partnership with CSA the Emergency Bridge program assists families who have had a foster relative with them through Child Protective Services. The program offers reimbursement vouchers to offset childcare costs and provides childcare navigator services to aid families in locating childcare. The navigator links them with alternative childcare subsidy options. The program provides Trauma-Informed Care training and coaching for childcare providers to enhance their ability to provide nurturing and safe environments. Foster parents also are welcome to attend.</p>

Program Descriptions Continued

Educating Children & Supporting Parents

Program Name & Support

Program Description

General Child Care & Program (CTTR)

Infants, Toddlers, School-Age Children

Provides a comprehensive and cost-effective system of childcare and child development services for children from infancy to 13 years old and their parents. General Childcare and Development programs are state and federally funded and services are provided through childcare centers and family childcare home networks.

Harvest of The Month

Infants, Toddlers, Preschool Children

Partners with area farmers to provide fresh, locally grown fruits and vegetables for children. Offers teacher and family training through hands-on learning experiences in garden-based, farm-to-school activities. Provides nutrition education to families to improve and support healthy lifestyles. Offers teacher trainings on best practices for incorporating physical activity into the daily lives of children and families.

Head Start

Preschool Children, Families

Provides continuous, intensive, and comprehensive child development and support services to preschool children and their families through both childcare centers and home-based programs.

Migrant Child Care (CMIG)

Infants, Toddlers, Preschool Children

Provides comprehensive and cost-effective childcare and child development services to infants, toddler, preschool children, and their families. Children must have parents/guardians who earned at least 50% of their income from employment in fishing, agriculture, or agriculture-related work during the preceding 12 months. Provided through childcare centers.

Migrant Early Head Start

Pregnant Women, Infants, Toddlers, Families

Provides continuous, intensive, and comprehensive child development and support services to infants, toddlers, and their families. Children must have parents/guardians whose annual income comes primarily from migrant or seasonal work. Provided through family childcare homes.

Migrant & Seasonal Head Start

Infants, Toddlers, Preschool Children, Families

Provides continuous, intensive, and comprehensive child development and support services to infants, toddlers, preschool children, and their families. Children must have parents/guardians whose annual income comes primarily from migrant or seasonal agricultural work. Provided through both childcare centers and family childcare homes.

Stanislaus County Resource & Referral Program (R&R)

Families, Grandparents, Foster Parents, Early Education Staff

Helps parents find childcare that best meets their needs. Maintains a comprehensive database of licensed family childcare homes and childcare centers in Stanislaus County that includes licensing status, languages spoken, age groups served, schedules offered and capacity. Works with early care educators to improve care quality by offering training and technical assistance.

Program Descriptions

Developing Professionals

Program Name & Support

Program Description

Child Care Initiative Project
Current & Potential Family Child Care Home Providers

Provides training and support to potential and licensed family childcare home providers who wish to improve the quality of their care, increase their capacity to serve additional children or open a new family childcare home.

Early Education Teacher Development (EETD)
Early Childhood Education Staff

Supports the planning and implementation of Universal Prekindergarten in partnership with consortia members throughout Stanislaus County. Strategies include reimbursements, stipends and incentives for the retention, training and mentoring of highly qualified State Preschool Program (CSPP) and Transitional Kindergarten (TK) educators.

Inclusive Early Education & Expansion Program (IEEEP)
State Preschool Programs & Teachers

Supports and ensures children with disabilities have greater rates of enrollment in inclusive, subsidized Early Learning and Care (ELC) programs. Builds the capacity of ELC professionals; increases access to inclusive ELC programs for children representing a broad range of disabilities and levels of support needs; and provides individualized and necessary supports to enable children to meet high expectations within ELC settings.

Quality Counts California (Stanislaus)
Early Childhood Education Teaching Staff; Family Child Care Providers; and Family, Friends, and Neighbors Caregivers with a Child Care Voucher

Supports quality improvement in Early Learning and Care (ELC) settings serving a subsidized child or a child on a voucher by providing outreach and engagement, incentives, coaching, professional development, resources, and program assessments.

Quality Counts California Workforce Pathways
Early Childhood Education Teaching Staff; Family Child Care Providers; & Family, Friends, and Neighbors Caregivers with a Child Care Voucher

Assists in strengthening the Early Learning and Care workforce’s qualifications and effectiveness by providing professional growth guidance, professional development opportunities, and support for those completing unit-bearing coursework.

R&R Health & Safety Grant
Early Childhood Education Staff; Family, Friends & Neighbors Providing Child Care

Provides funds to support required health and safety trainings – including CPR, first aid, and preventative health and safety – for childcare center staff; family childcare home providers; and Family, Friends, and Neighbors personnel.

Stanislaus County Child Care & Development Local Planning Council
Early Childhood Education Staff

Supports the overall coordination of childcare services. Conducts assessments of county childcare needs and prepares plans to address them. Assessments feature information on childcare supply and demand, including the need for both privately and publicly funded care.

Universal Pre-Kindergarten (UPK)
Early Childhood Education Staff

Utilizes state funding to support local education agencies’ early learning planning and capacity-building initiatives as part of an effort to expand local access to Pre-Kindergarten programs. UPK supports planning, hiring and recruitment; staff training and professional development; classroom materials and supplies; and provides outreach to inform parents and guardians of the variety of child care services available for three- and four-year-old children.

County Board of Education

**Kim A. Rose, Trustee
Area 1**



**Alice J. Pollard, Chairperson
Area 2**



**Paulo Carvalho, Vice-Chairperson
Area 3**



**Mary Ann Sanders, Trustee
Area 4**



**Chinyere Nnodim-Jack, Trustee
Area 5**



**Allison Molina, 2025-2026
Student Board Representative**



Phone:
(209) 238-6300

Fax:
(209) 238-4217

Physical Address:
1325 H Street, Modesto, CA 95354

Mailing Address
1100 H Street, Modesto, CA 95354

Website:
www.stancoe.org/cfs
www.stancoe.org



@SCOEcfs
@stanislausCOE