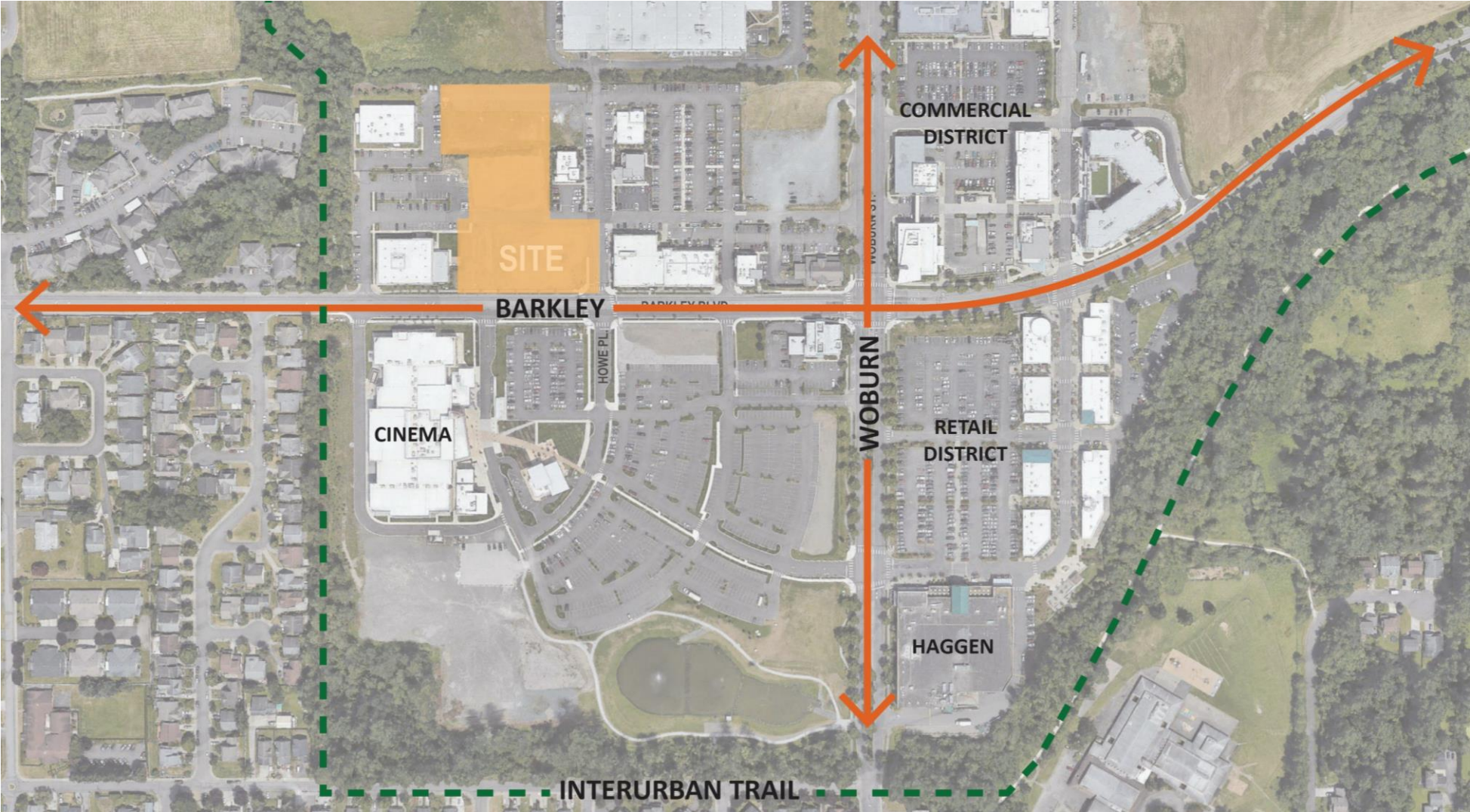
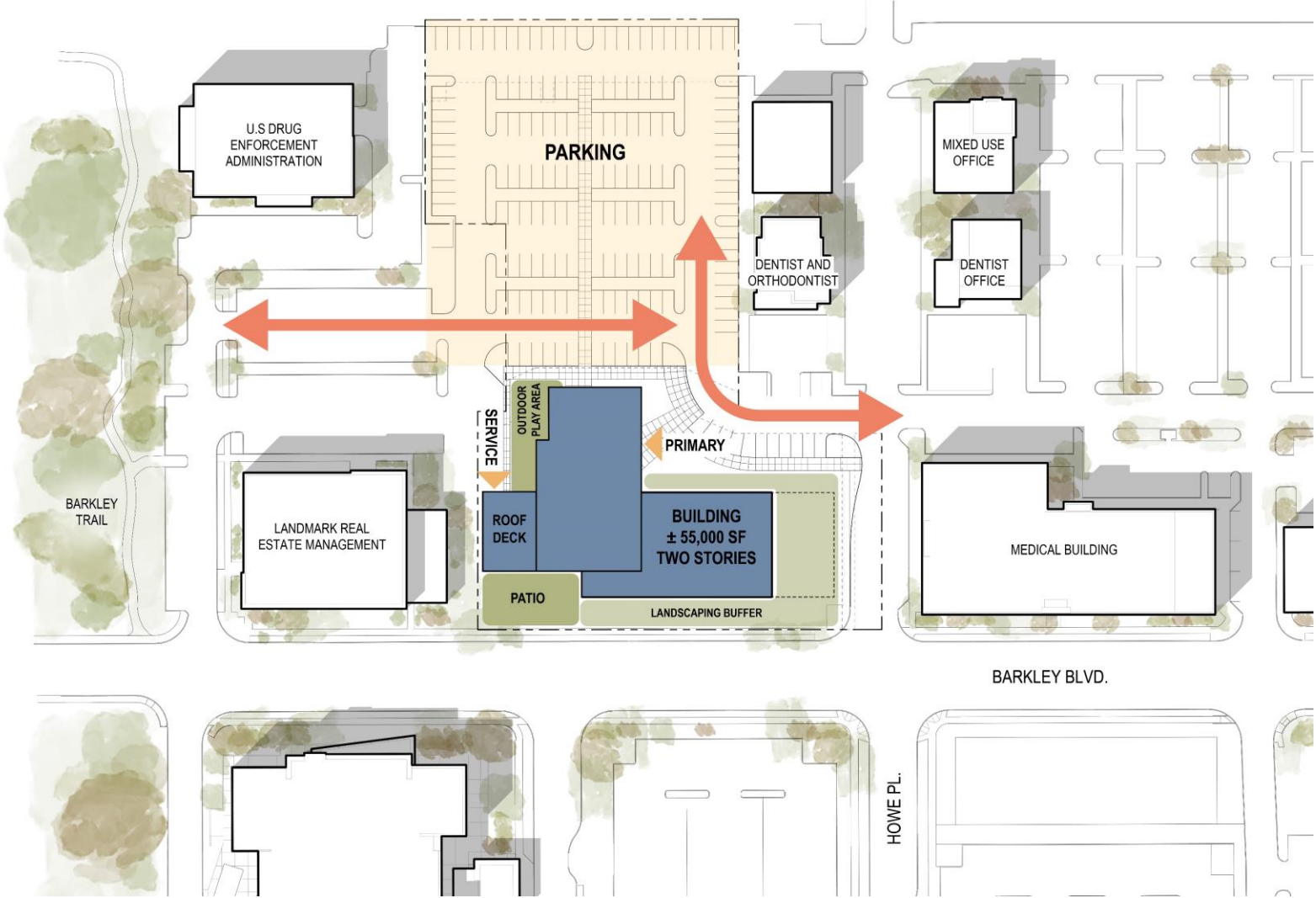


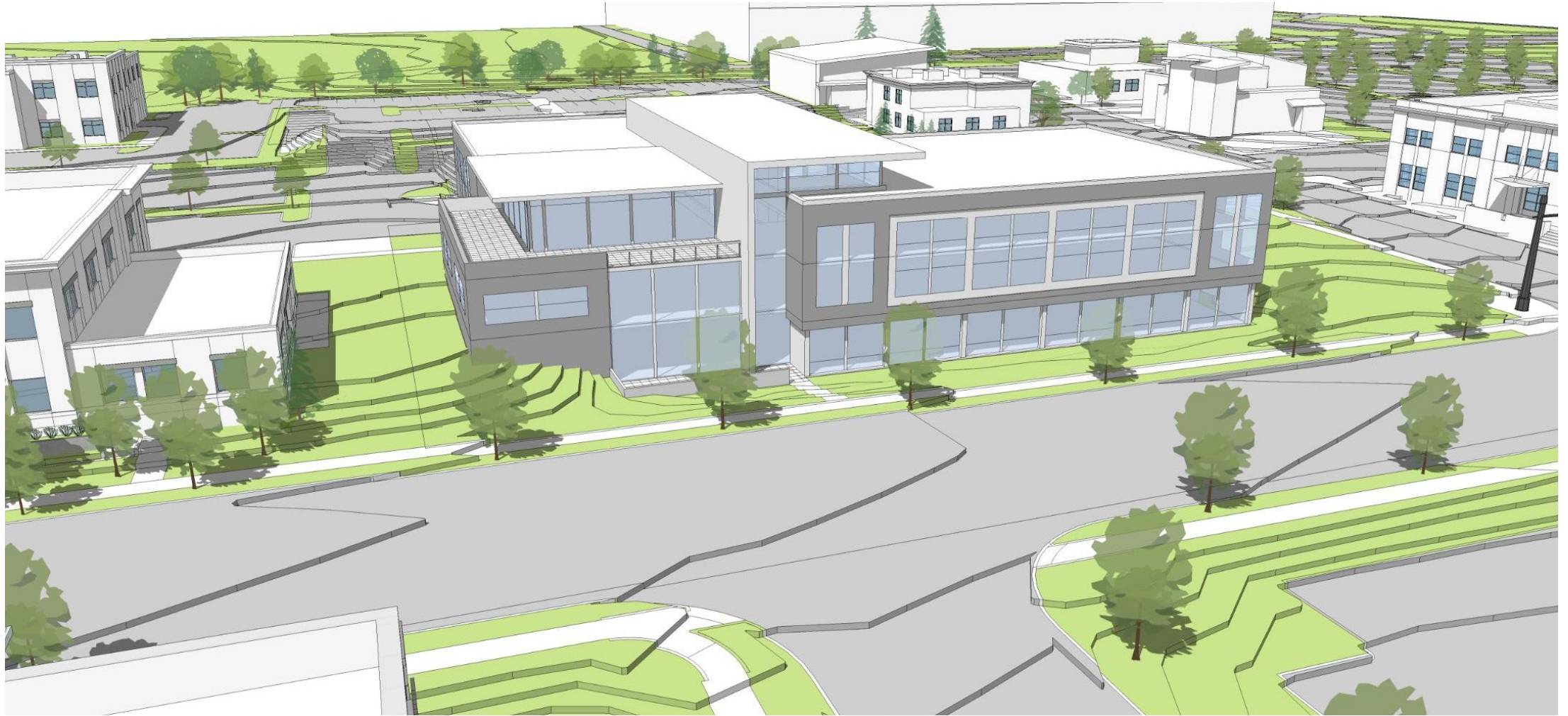
Site Context



Selected Site Option



Concept Design



Site Design



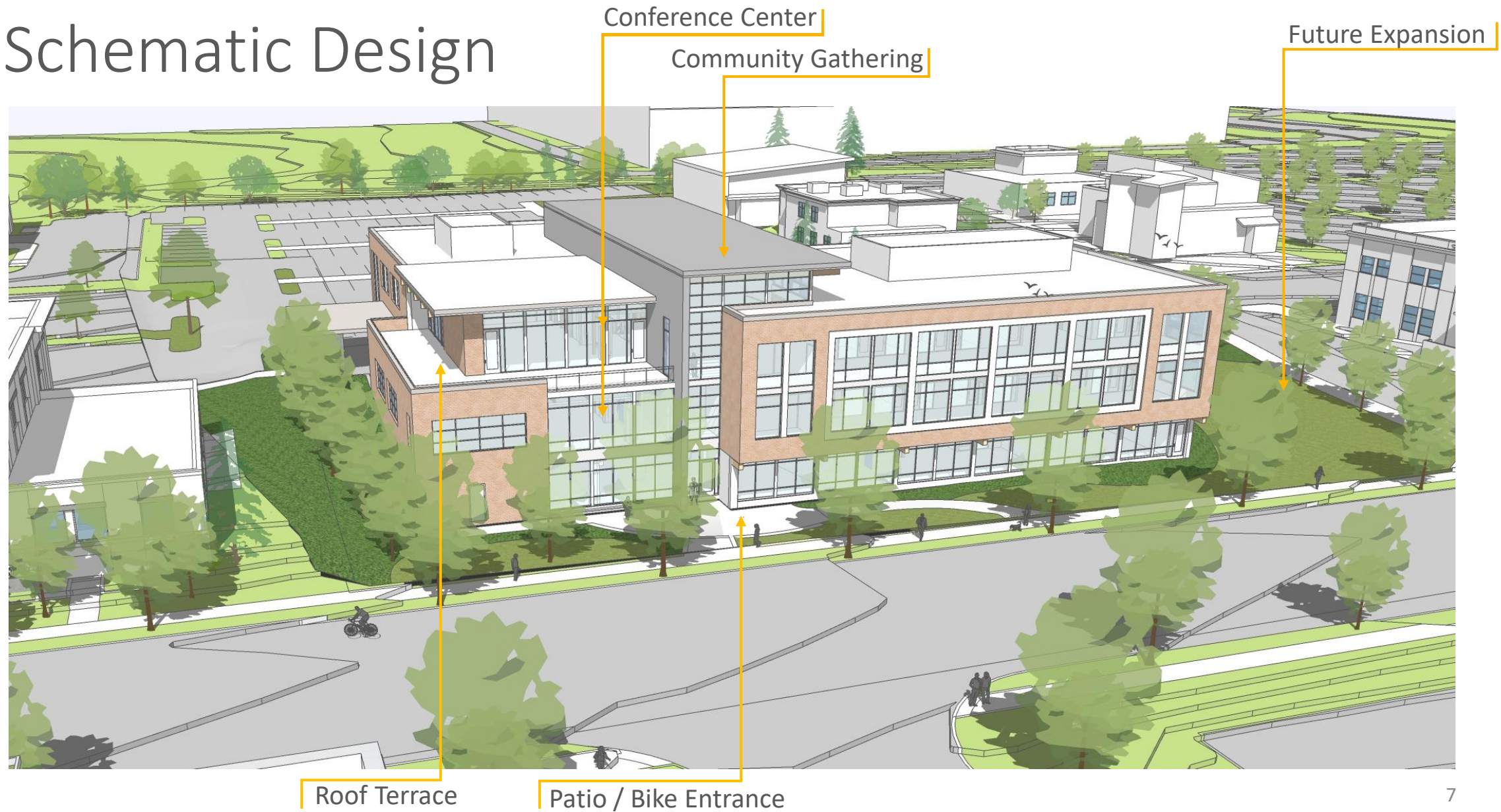
Site Design



Schematic Design



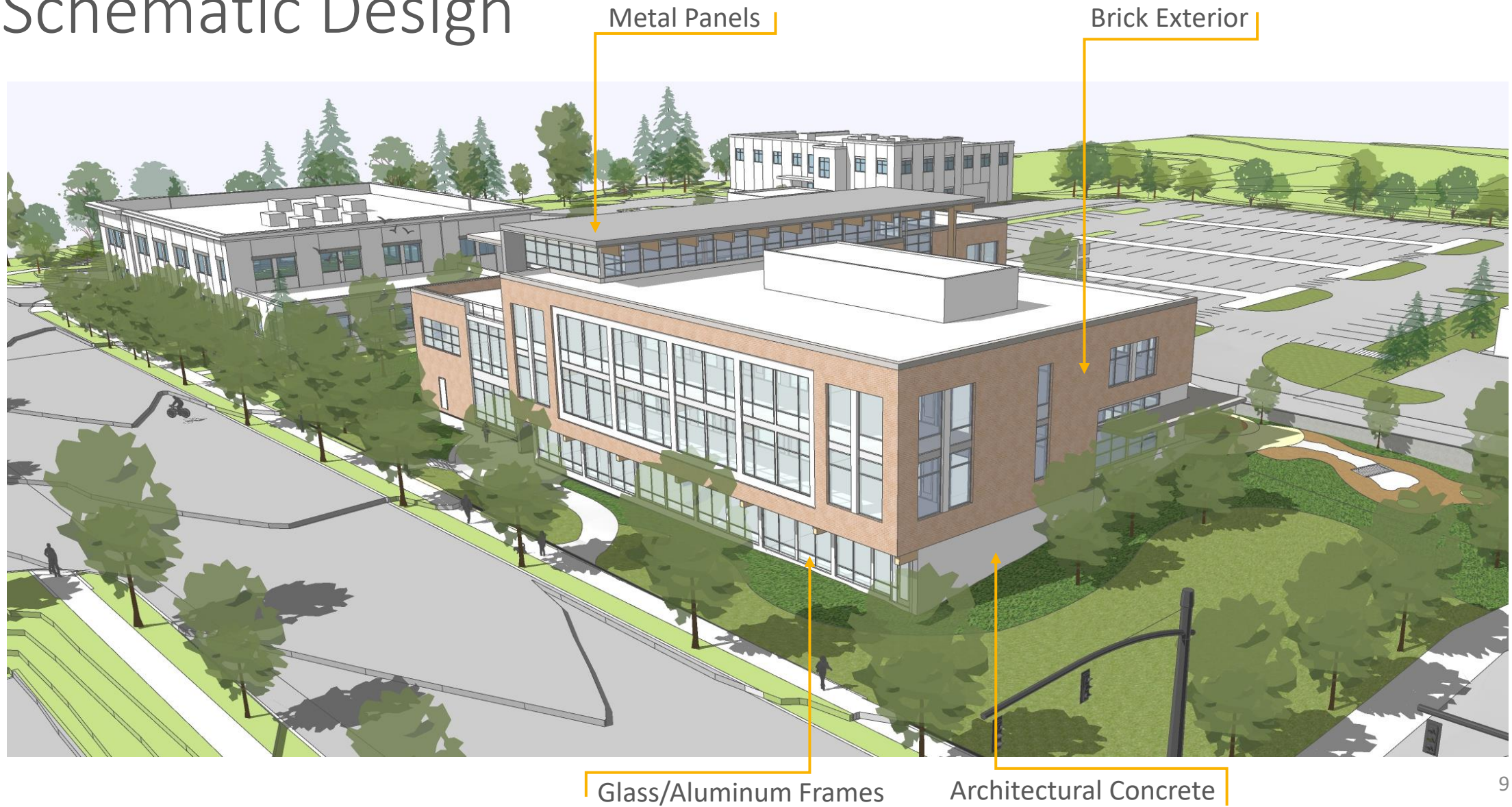
Schematic Design



Schematic Design



Schematic Design



Schematic Design



Section thru Community Space



Section

Meeting Rooms

Conference Center

Community Gather

Work Areas



Outdoor Patio

Lunch Room

Schematic Design



Sustainability

Cross-Laminated Timber



Photo: Ema Peter

STRUCTURAL SOLUTIONS | POST, BEAM + PLATE

Cross-Laminated Timber



Standards



Washington Sustainable Schools
 (Founded 2005 – Collaborative for High Performing Schools)

- Oriented towards sustainability and resource efficiency while providing a flexible framework to meet local needs.



LEED
 (Started 1993 – US Green Building Council – Standard developed with Natural Resources Defense Council)

- Prioritizes sustainability and resource efficiency while accommodating factors associated with personal health.



WELL
 (Started 2013 – International Well Building Institute, aligned with International Living Future Institute – Living Building Challenge)





- Measures attributes of a building that impact occupant health.



FITWEL
 (Launched 2016 by CfAD – Center for Active Design)

- Focused on the impact that workplace design has on occupant health and well-being.

Standards

	<p>Washington Sustainable Schools (Founded 2005 – Collaborative for High Performing Schools)</p>	<ul style="list-style-type: none"> • Oriented towards sustainability and resource efficiency while providing a flexible framework to meet local needs.
	<p>LEED (Started 1993 – US Green Building Council – Standard developed with Natural Resources Defense Council)</p>	<ul style="list-style-type: none"> • Prioritizes sustainability and resource efficiency while accommodating factors associated with personal health.
	<p>WELL (Started 2013 – International Well Building Institute, aligned with International Living Future Institute – Living Building Challenge)</p>	<ul style="list-style-type: none"> • Measures attributes of a building that impact occupant health.
	<p>FITWEL (Launched 2016 by CfAD – Center for Active Design)</p>	<ul style="list-style-type: none"> • Focused on the impact that workplace design has on occupant health and well-being.

WSSP Scorecard

WSSP 2018 Scorecard											
District: Bellingham Contact Name & Phone: Jason Willard, RMC Architects 360 676 7733 Date: 2021-01-08											
Project Name and Type: Bellingham Public Schools Administration Building Phase: Design											
Category	Group	Credit Number	Credit Name	Possible Points	Yes	No	Maybe	Responsibility	Comments		
Site 23 points	1) Selection & Use	S1.0	Code Compliance	R	0			RMC, Freeland			
		S1.1	Sensitive Areas	1	1			Freeland			
		S1.2	Greenfields	1	1			RMC, Freeland	Undeveloped land in (future) Urban Village		
		S1.3	Central Location	1			1	RMC, BSD	Can this be calculated for employees?		
		S1.4	Joint Use of On-Site Facilities	1-2	1		1	RMC, BSD	2nd point requires written agreement with community group - ELC operator		
		S1.5	Joint Use of Off Site Facilities	1		1		RMC, BSD	Point requires written agreement for park / other shared space off-site		
	S1.6	Minimize Site Disturbance - Building	2	2			RMC	Building footprint <60% of total SF, and FAR >1:4			
	2) Transportation	S2.1	Public Transportation	1	1			RMC, Freeland	Locate within 1/4 mile of one or more bus lines - WTA #331, 525, 540		
		S2.2	Bicycle Lanes & Security	1	1			RMC, Freeland	Bike lanes and sidewalks to end of property and secure bicycle storage		
		S2.3	Electric Vehicle Charging Stations	1-2	2			RMC, Freeland, TFWB	Required by IBC 427.2 - Chargepoint		
		S2.4	Minimize Parking	1			1	RMC, Freeland	Provide preferred parking for 5% of staff and do not exceed local codes in number of stalls + district vehicles		
	3) Stormwater Management	S3.0	Construction Stormwater Pollution Prevention	R	0			Freeland	Prerequisite		
		S3.1	On-site Stormwater Management and Flow Control	R-1	0			Freeland	Prerequisite		
		S3.2	Stormwater Treatment	R-1	0			Freeland	Prerequisite		
		S3.3	Soil Management	1	1			Freeland, Weisman	Required by City code		
	4) Outdoor Surfaces	S4.1	Outdoor Learning Spaces	2		2		RMC, Weisman			
		S4.2	School Gardens	1-2		2		RMC, Weisman	Gardens good, but probably not credit-compliant		
		S4.3	Reduce Heat Island - Site	1			1	RMC, Freeland, Weisman	Shade and high-reflectivity for 30% of site		
		S4.4	Reduce Heat Island - Roof Design	1	1			RMC, Weisman	Energy Star cool roof >75% of roof area or >50% vegetated roof area		
	5) Outdoor Lighting	S5.1	Light Pollution Reduction	1			1	RMC, Freeland, TFWB	IESNA compliance for foot-candle requirements and zero direct-beam illumination leaves site		
	Total possible				23	11	5	5			
	Water 10 points	1) Outdoor Systems	W1.0	Landscape Water Use Budget	R	0			Weisman	Develop water budget - Irrigation Association BMP's	
			W1.1	Irrigation Water Reduction (50%, 100%)	1-2		2		Weisman	Reduce by 50%, remove irrigation use after establishment period	
W1.2			Control Irrigation Water Use	1	1			Weisman	Develop schedule and input into controller after plant establishment or install climate-based controls		
W1.3			Irrigation System Testing and Training	1			1	Weisman	Create irrigation commissioning plan		
2) Indoor Systems		W2.0	Lead-Free Potable Water System	1	1			Metrix	Specify products that are certified under lead-free requirement of 2014 Safe Water Drinking Act		
		W2.1	Potable Water Use Reduction for Sewage (25%, 45%)	1-2	1		1	Metrix	Provide savings below baseline for 25% or 45% reduction		
		W2.2	Potable Water Use Reduction (20%, 30%, 40%)	1-3	1		2	Metrix	Reduce potable water use beyond baseline for 20%, 30%, or 40% reduction		
Total possible				10	4	2	4				

WSSSP Scorecard

Category	Group	Credit Number	Credit Name	Possible Points	Yes	No	Maybe	Responsibility	Comments
GRAND TOTAL Possible Points (Most points possible, not a total of all points listed above)				197	83	76	79		
Minimum required for Washington Sustainable School Two-tier system:									
New Facility and new Building on Existing Facility				58 or 66					
For Class I Districts: Minimum 66 points									
For Class II Districts: Minimum 58 points									
Modernization				43 or 49					
For Class I Districts: Minimum 49 points									
For Class II Districts: Minimum 43 points									

- Certification level for Class I District = Minimum of 66 points
- Design team projects 83 points
- Categories include Site, Water, Materials & Waste, Energy, Indoor Environmental Quality, and Integration, Education, and Operations
- Strategies within Scorecard developed with inputs from building design team and BPS
- Sustainable design best practices – these are site- and building-focused, and while beneficial, are minimally-related to Health and Wellness of Building Occupants

Standards – Health and Wellness



Washington Sustainable Schools
(Founded 2005 – Collaborative for High Performing Schools)

- Oriented towards sustainability and resource efficiency while providing a flexible framework to meet local needs.



LEED
(Started 1993 – US Green Building Council – Standard developed with Natural Resources Defense Council)

- Prioritizes sustainability and resource efficiency while accommodating factors associated with personal health.



WELL
(Started 2013 – International Well Building Institute, aligned with International Living Future Institute – Living Building Challenge)

- Measures attributes of a building that impact occupant health.



FITWEL
(Launched 2016 by CfAD – Center for Active Design)

- Focused on the impact that workplace design has on occupant health and well-being.

Standards – Health and Wellness



Washington Sustainable Schools
(Founded 2005 – Collaborative for High Performing Schools)

- Oriented towards sustainability and resource efficiency while providing a flexible framework to meet local needs.



LEED
(Started 1993 – US Green Building Council – Standard developed with Natural Resources Defense Council)

- Prioritizes sustainability and resource efficiency while accommodating factors associated with personal health.



WELL
(Started 2013 – International Well Building Institute, aligned with International Living Future Institute – Living Building Challenge)

- Measures attributes of a building that impact occupant health.



FITWEL
(Launched 2016 by CfAD – Center for Active Design)

- Focused on the impact that workplace design has on occupant health and well-being.

Fitwel Goals



Impacts Surrounding Community Health - Strategies that impact surrounding community health broaden the impact of the project past the health of on site occupants, reaching those who live, work, play, or learn in the neighboring areas



Reduces Morbidity and Absenteeism - Strategies that reduce morbidity and absenteeism promote decreased rates of chronic disease and mental health conditions, reductions in disease transmission, and fewer missed days of work.



Supports Social Equity for Vulnerable Populations - Strategies that support social equity for vulnerable populations ensure that a range of populations, including children, elderly, disabled, or socio-economically disadvantaged persons have increased access to health-promoting opportunities whether through universal accessibility, pricing incentives, targeted amenities, or pedestrian-focused environments.



Instills Feelings of Well-Being - Strategies that instill feelings of well-being promote inclusion, relaxation, and perceptions of safety, through rejuvenating and clean spaces, an enhanced connection to nature, and opportunities for social engagement.



Enhances Access to Healthy Foods - Strategies that enhance access to healthy foods provide occupants with expanded availability to fruits, vegetables, and other nutritious food options by diversifying the outlets and sources of healthier food options, promoting healthier choices, and reducing cost of healthier options through pricing incentives.



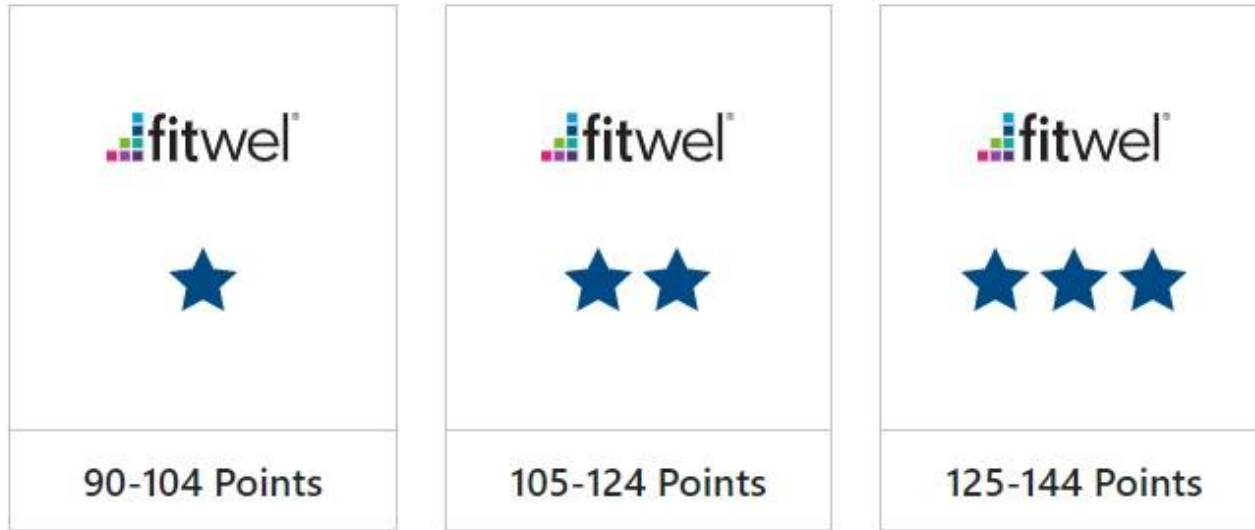
Promotes Occupant Safety - Strategies that promote occupant safety decrease risk of crime and injury, protect bicyclists and pedestrians from vehicular traffic, and increase stair safety.



Increases Physical Activity - Strategies that increase physical activity incorporate opportunities for movement into everyday life whether through encouraging active transportation, promoting stair use, or expanding access to indoor and outdoor fitness areas and equipment.



Fitwel Goals



- Aspirational strategies for long-term occupant health
- Alignment with sustainability strategies already identified within WSSP credit scorecard and architectural design achieves approximately 53 points
- 62 points in 'Maybe' column – how do we move them to 'Yes'?
- Certification level desired? 3-year certification (can re-certify after)

Fitwel Scorecard

ID	SUB-TITLE	STRATEGY	POINTS AVAILABLE			ANTICIPATED POINTS		NOTES
			YES	AC	NA	YES / AC / NA	MAYBE	
9. WATER SUPPLY								
9.1	Universally Accessible Water Supplies	Provide a sufficient number of universally accessible water supplies	3.08	—	—	0.00	3.08	
9.2	Water Bottle Refilling Station	Provide bottle refilling stations at water supplies	1.40	—	—	0.00	1.40	
9.3	Water Quality	Conduct regular water quality testing	2.24	—	—	0.00	2.24	
Total Points Available / Anticipated			6.72	0.00	0.00	0.00	6.72	
10. PREPARED FOOD AREAS								
10.1	Healthy Food and Beverage Policy	Establish and implement a healthy food and beverage policy as rigorous as the Fitwel Food and Beverage Standard in a prepared food area	4.19	2.09	—	0.00	0.00	
10.2	Choice Architecture	Implement choice architecture practices in a prepared food area	3.91	1.96	—	0.00	0.00	
10.3	Pricing Incentives	Implement pricing incentive practices in a prepared food area	3.63	—	3.63	0.00	0.00	
10.4	Water Access	Provide access to free water supplies in a prepared food area	3.08	—	3.08	0.00	0.00	
Total Points Available / Anticipated			14.81	4.05	6.71	0.00	0.00	
11. VENDING MACHINES AND SNACK BARS								
11.1	Healthy Vending Machines and Snack bars	Establish and implement a healthy food and beverage policy as rigorous as the Fitwel Food and Beverage Standard for vending machines and snack bars	1.68	—	1.68	0.00	1.68	
11.2	Vending and Snack Bar Choice Architecture	Implement choice architecture practices for vending machines and snack bars	1.68	—	1.68	0.00	1.68	
11.3	Vending and Snack Bar Pricing Incentives	Implement pricing incentive practices for vending machines and snack bars	1.96	—	1.96	0.00	1.96	
11.4	Water Access	Provide access to free water supplies near vending machines and snack bars	1.40	—	1.40	0.00	1.40	
Total Points Available / Anticipated			6.72	0.00	6.72	0.00	6.72	
12. EMERGENCY PREPAREDNESS								
12.1	Emergency Preparedness Plan	Establish and Implement a comprehensive Emergency Preparedness Plan	1.12	—	—	1.12	0.00	
12.2	Automated External Defibrillator (AED)	Install a sufficient number of Automated External Defibrillators (AED)	2.24	—	—	0.00	2.24	
12.3	Certified First Responders	Provide a sufficient number of Certified First Responders (CFR)	0.84	—	—	0.00	0.84	
12.4	Emergency Address Notification	Provide an automated emergency address notification system	3.63	—	—	0.00	3.63	
Total Points Available / Anticipated			7.83	0.00	0.00	1.12	6.71	
Total Anticipated Points					53	62		

- Included credits:

Exercise and Shower Facilities

Prominent / Visible Stair

Educational Signage

Healthy Food and Beverage

Policy / Healthy Snack Bar

Bottle filling stations

Access to Daylight, Nature and Views

Active Workstations

Thank You

